



Seattle Police Department

SEA STAT

September 2, 2015



PRINCIPLES OF SEASTAT

1. **Accurate and Timely Information**

Know what is happening

2. **Effective Tactics**

Have a plan

3. **Rapid Deployment**

Do it quickly

4. **Relentless Follow-up and Assessment**

If it works, do more. If not, do something else

FORMULATING CRIME REDUCTION STRATEGIES

Focus on...

- *Problem Locations*
- *Prolific Offenders*
- *Repeat and Vulnerable Victims*



CITYWIDE MAJOR CRIME

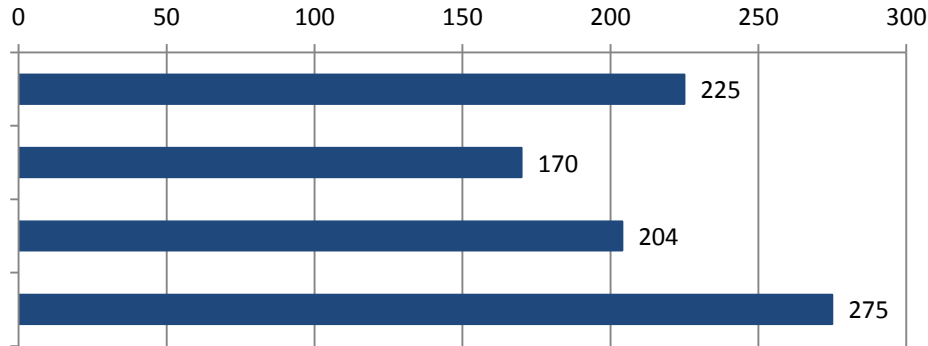
28 Day & Year to Date (YTD) Detail

Crime Category	WEEK 1 08/02 - 08/08	WEEK 2 08/09 - 08/15	WEEK 3 08/16 - 08/22	WEEK 4 08/23 - 08/29	28 DAY Total	YTD 08/29 2014	YTD 08/29 2015	YTD Amount Change	YTD % Change
Homicide	0	1	2	2	5	15	18	3	+20%
Rape	2	5	4	2	13	83	73	-10	-12%
Robbery	35	33	22	28	118	1,012	1,042	30	+3%
DV Assault - Aggravated	9	8	14	6	37	458	369	-89	-19%
Assault-Aggravated (Excludes DV)	30	36	36	48	150	860	995	135	+16%
Person Crime TOTAL	76	83	78	86	323	2,428	2,497	69	+3%
Burglary - Residential	84	97	95	69	345	3,374	3,434	60	+2%
Burglary - Non-Residential	39	46	39	14	138	1,256	1,292	36	+3%
Larceny-Theft	232	188	204	142	766	8,318	8,042	-276	-3%
Carprowl/Theft-Auto Accessories-Auto Parts-License Plate	235	260	264	153	912	10,288	8,217	-2,071	-20%
Motor Vehicle Theft	66	64	50	58	238	3,749	2,456	-1,293	-34%
Property Crime TOTAL	656	655	652	436	2,399	26,985	23,441	-3,544	-13%
GRAND TOTAL	732	738	730	522	2,722	29,413	25,938	-3,475	-12%

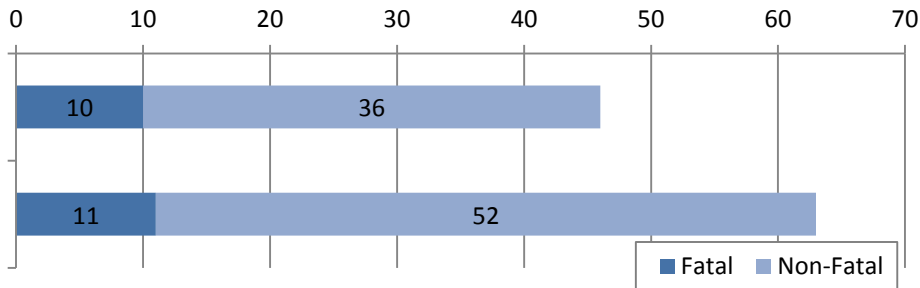
Data derived from SPD Operations Dashboard on 9/1/15.

SHOTS FIRED

Shots Fired
January 1 to August 31 (2012-2015)



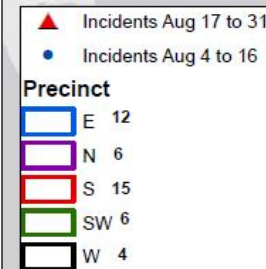
Shootings by Injury
January 1 to August 31 (2014 and 2015)



Shots Fired August 4, 2015 to August 31, 2015
(43 GOs citywide*)

*Does not include Self Inflicted or OIS

28 Day Overview



Esri, HERE, DeLorme, MapmyIndia, © OpenStreetMap contributors, and the GIS user community

Crime Gun Task Force
NIBIN/IBIS Hits YTD 2015: **134**

PRECINCT UPDATES

West



WEST PRECINCT MAJOR CRIME

28 Day & Year to Date (YTD) Detail WEST

Crime Category	WEEK 1 08/02 - 08/08	WEEK 2 08/09 - 08/15	WEEK 3 08/16 - 08/22	WEEK 4 08/23 - 08/29	28 DAY Total	YTD 08/29 2014	YTD 08/29 2015	YTD Amount Change	YTD % Change
Homicide	0	0	1	1	2	6	6	0	+0%
Rape	0	1	3	1	5	19	18	-1	-5%
Robbery	13	8	9	9	39	310	299	-11	-4%
DV Assault - Aggravated	2	2	2	0	6	74	55	-19	-26%
Assault-Aggravated (Excludes DV)	7	15	11	19	52	268	289	21	+8%
Person Crime TOTAL	22	26	26	30	104	677	667	-10	-1%
Burglary - Residential	13	15	21	10	59	393	633	240	+61%
Burglary - Non-Residential	18	10	11	4	43	356	409	53	+15%
Larceny-Theft	70	66	79	40	255	2,733	2,626	-107	-4%
Carprowl/Theft-Auto Accessories-Auto Parts-License Plate	85	90	72	49	296	3,057	2,568	-489	-16%
Motor Vehicle Theft	14	7	8	10	39	550	333	-217	-39%
Property Crime TOTAL	200	188	191	113	692	7,089	6,569	-520	-7%
GRAND TOTAL	222	214	217	143	796	7,766	7,236	-530	-7%

Data derived from SPD Operations Dashboard on 9/1/15.

WEST PRECINCT

Secured Parking Burglary Pattern

Date Range: August 12 to 19, 2015

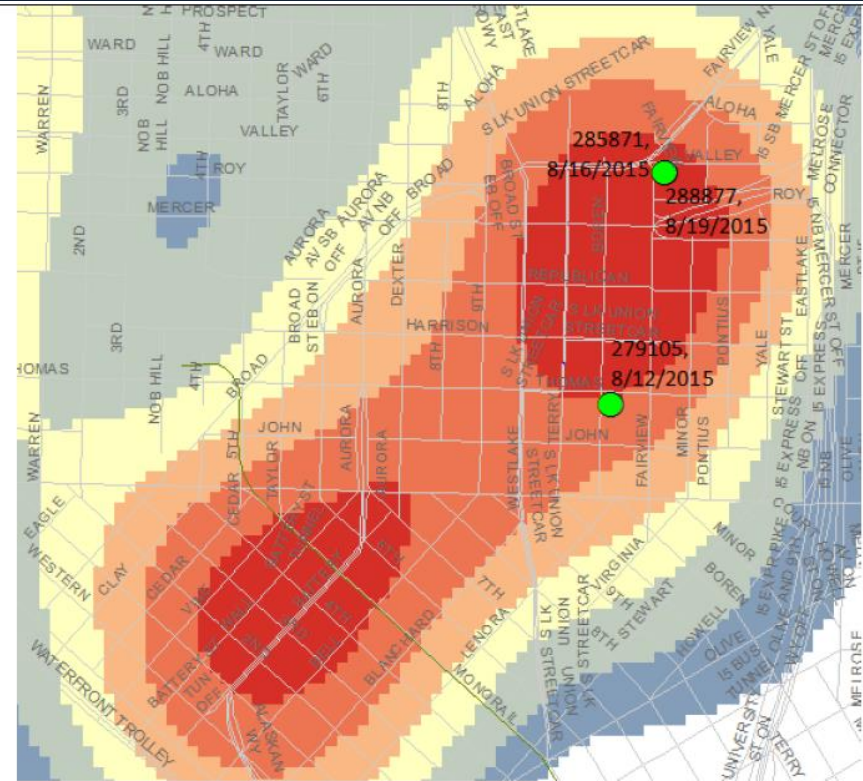
Number of Incidents: 3

Sector Impacted: David – 3

MO: Suspect enters private storage units utilizing pry and cutting tools

Suspect Description: W/M 30s 5-08 dark hair possible eastern European accent.

Possible Vehicle: Black Ford 350 van “A-Team” style

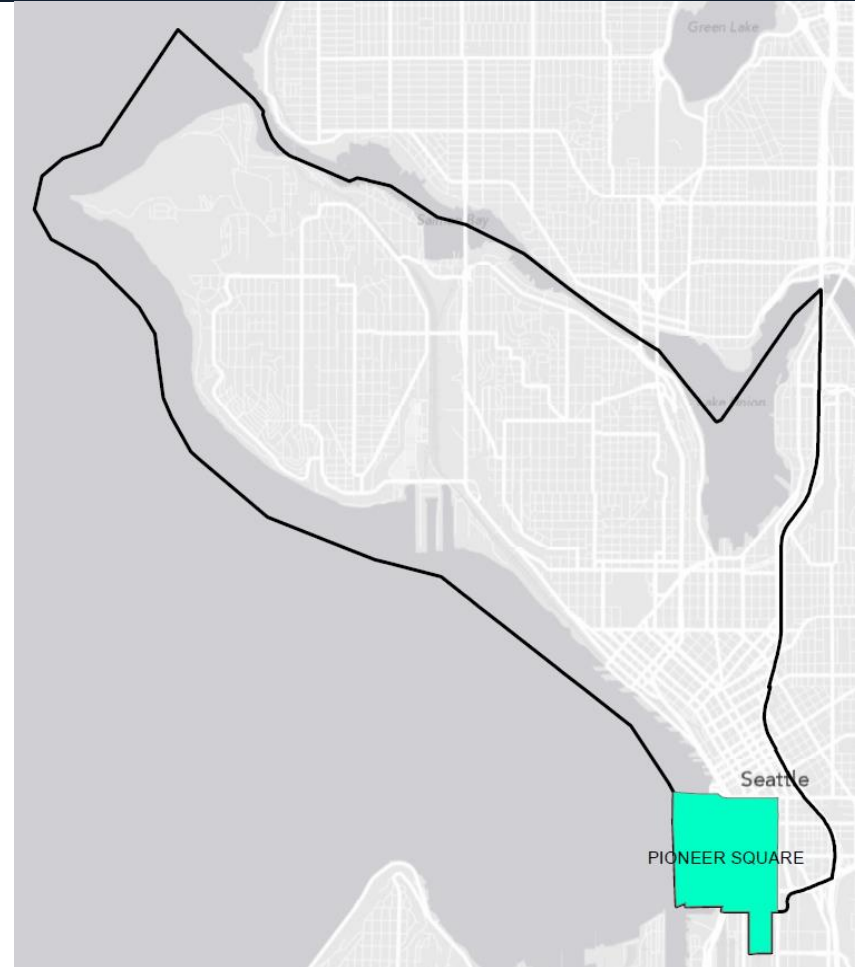


WEST PRECINCT MCPP

Pioneer Square

Priorities

1. Drug Sales
2. Prostitution
3. Event issues: noise, drinking/intoxication, garbage, public urination
4. Homeless
5. Fortson Square



PRECINCT UPDATES

South



SOUTH PRECINCT MAJOR CRIME

28 Day & Year to Date (YTD) Detail SOUTH

Crime Category	WEEK 1 08/02 - 08/08	WEEK 2 08/09 - 08/15	WEEK 3 08/16 - 08/22	WEEK 4 08/23 - 08/29	28 DAY Total	YTD 08/29 2014	YTD 08/29 2015	YTD Amount Change	YTD % Change
Homicide	0	0	0	0	0	1	3	2	+200%
Rape	0	1	0	0	1	15	10	-5	-33%
Robbery	4	4	5	2	15	255	193	-62	-24%
DV Assault - Aggravated	3	2	1	1	7	132	98	-34	-26%
Assault-Aggravated (Excludes DV)	3	3	7	6	19	157	158	1	+1%
Person Crime TOTAL	10	10	13	9	42	560	462	-98	-18%
Burglary - Residential	4	9	9	9	31	756	498	-258	-34%
Burglary - Non-Residential	3	10	5	2	20	163	178	15	+9%
Larceny-Theft	25	19	16	14	74	887	732	-155	-17%
Carprowl/Theft-Auto Accessories-Auto Parts-License Plate	26	28	25	12	91	1,543	998	-545	-35%
Motor Vehicle Theft	15	13	8	8	44	608	476	-132	-22%
Property Crime TOTAL	73	79	63	45	260	3,957	2,882	-1,075	-27%
GRAND TOTAL	83	89	76	54	302	4,517	3,344	-1,173	-26%

Data derived from SPD Operations Dashboard on 9/1/15.

SOUTH PRECINCT

Commercial Burglary

Date Range: August 5 through 22, 2015.

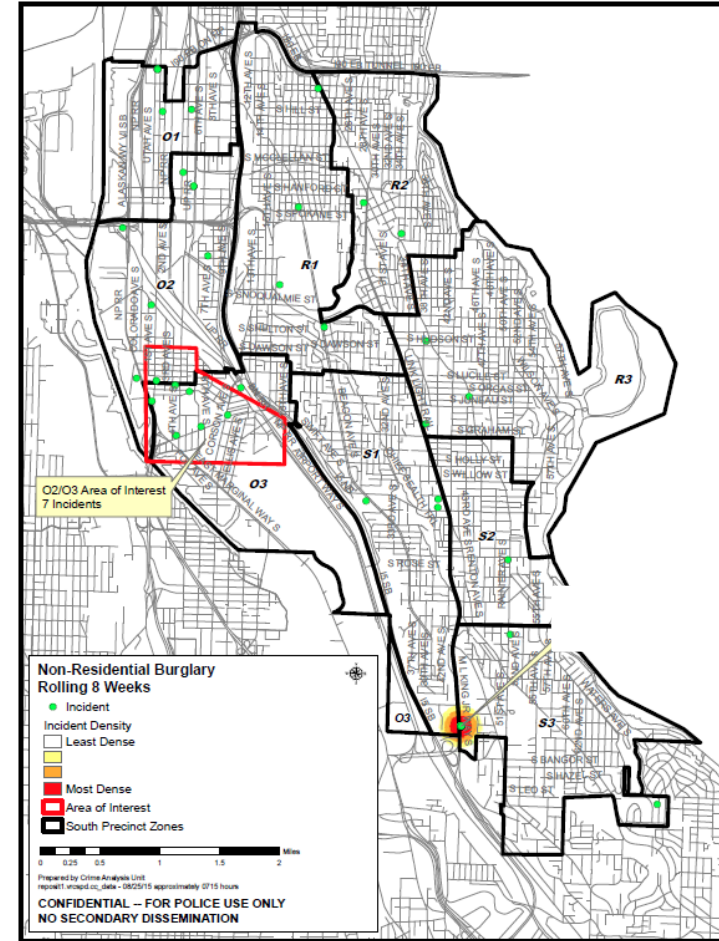
Number of Incidents: 16

Impacted Beats: O2/O3

Burglary of Note: Espresso Stands (3)

Suspect Description: W/M 30-49; 5-09; 150-170

MO: Breaks window to gain entry; takes cash/cash register
Uses stolen vehicle for get-a-way



SOUTH PRECINCT

Street Robberies

Date Range: June 28 to August 22, 2015

Number of Incidents: 33 (Last Week 3)

Sectors Impacted:

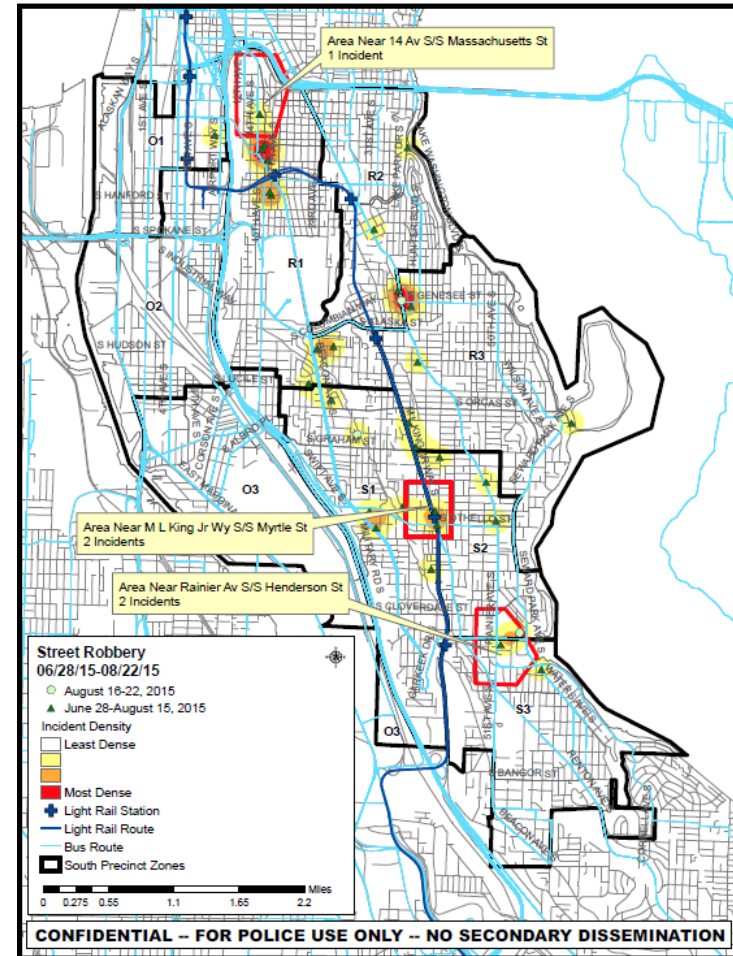
Robert Sector	18 (Robert-1	9 incidents)
Sam Sector	14 (Sam-1&2	6 incidents each)

Method:

Bodyforce	20
Gun	10
Weapon	3

Days of Week:

Mondays (7); Tuesday (7); Wednesdays (9)

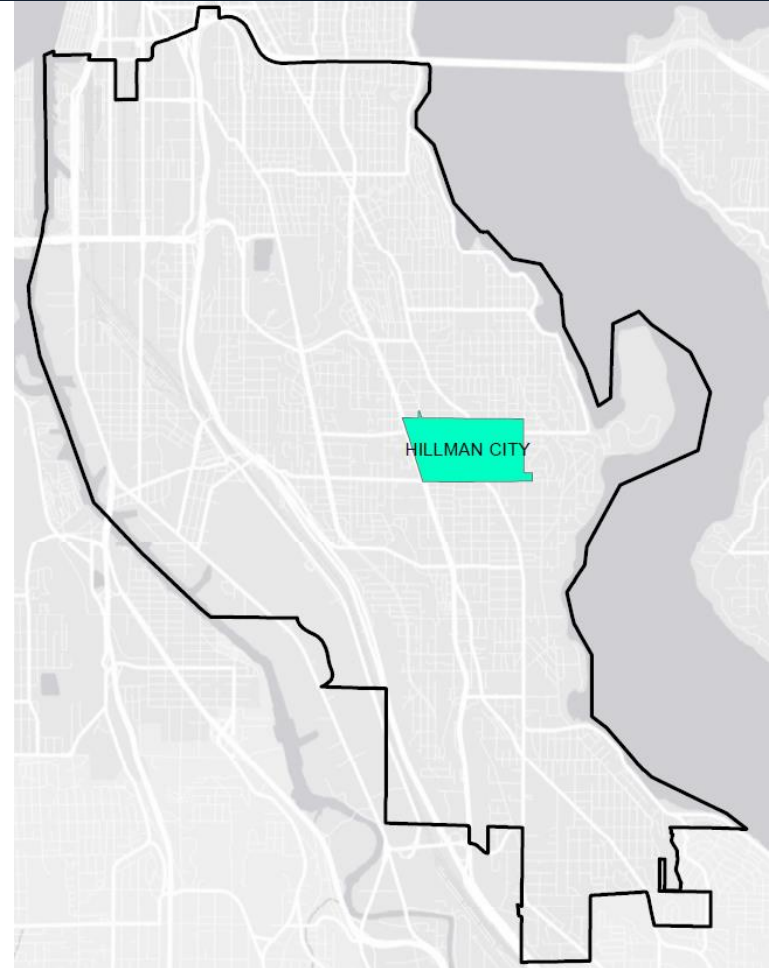


SOUTH PRECINCT MCPP

Hillman City

Priorities

1. Traffic
2. Street level drug sales
3. Residential burglaries



PRECINCT UPDATES

Southwest



SW PRECINCT MAJOR CRIME

28 Day & Year to Date (YTD) Detail SW

Crime Category	WEEK 1 08/02 - 08/08	WEEK 2 08/09 - 08/15	WEEK 3 08/16 - 08/22	WEEK 4 08/23 - 08/29	28 DAY Total	YTD 08/29 2014	YTD 08/29 2015	YTD Amount Change	YTD % Change
Homicide	0	0	0	0	0	1	1	0	+0%
Rape	1	0	0	0	1	10	10	0	+0%
Robbery	3	5	3	3	14	79	94	15	+19%
DV Assault - Aggravated	0	0	3	3	6	68	47	-21	-31%
Assault-Aggravated (Excludes DV)	3	1	1	1	6	69	68	-1	-1%
Person Crime TOTAL	7	6	7	7	27	227	220	-7	-3%
Burglary - Residential	9	12	5	8	34	326	324	-2	-1%
Burglary - Non-Residential	1	2	2	1	6	100	99	-1	-1%
Larceny-Theft	18	19	17	8	62	646	679	33	+5%
Carprowl/Theft-Auto Accessories-Auto Parts-License Plate	10	32	15	11	68	585	596	11	+2%
Motor Vehicle Theft	8	11	5	9	33	340	328	-12	-4%
Property Crime TOTAL	46	76	44	37	203	1,997	2,026	29	+1%
GRAND TOTAL	53	82	51	44	230	2,224	2,246	22	+1%

Data derived from SPD Operations Dashboard on 9/1/15.

SOUTHWEST PRECINCT

Auto Theft 4 Week Hotspot

Date Range: August 2 to 29, 2015

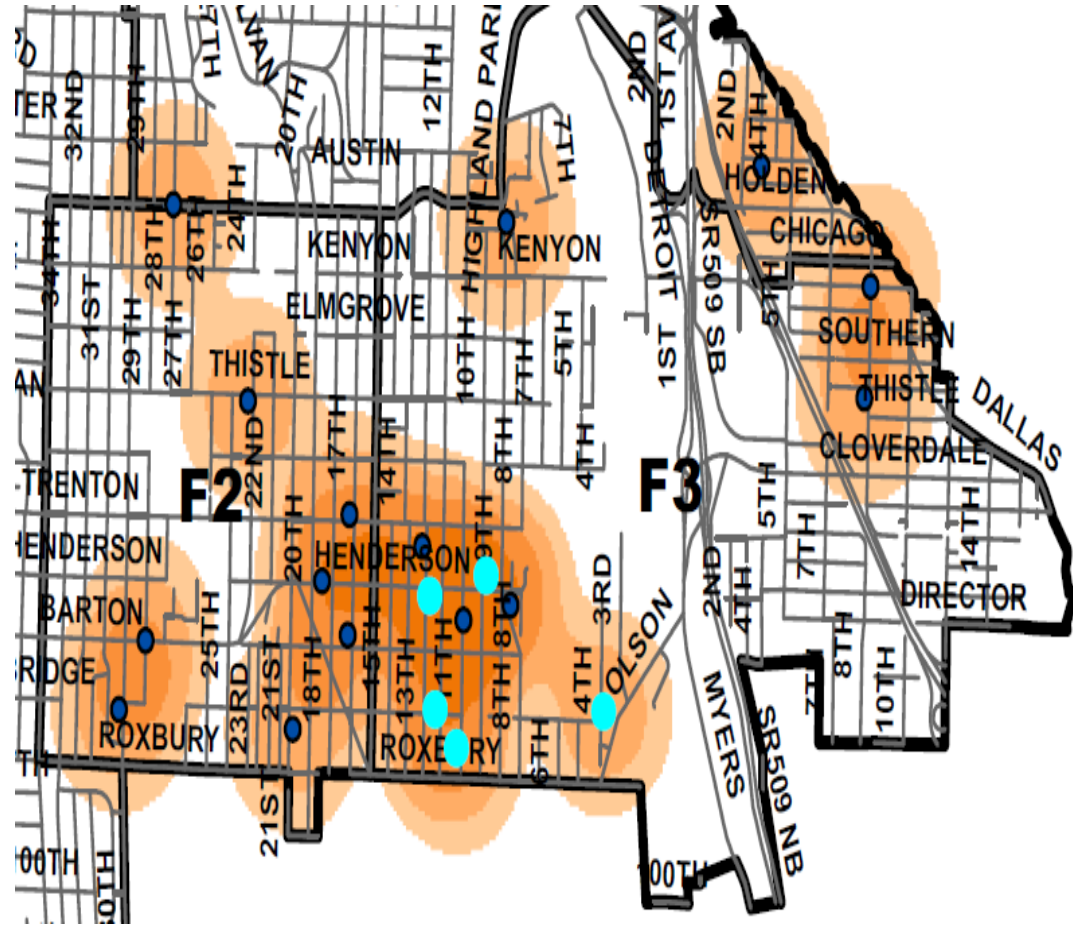
Number of Incidents: 36

Last Week 9

Sectors Impacted:

Frank – 2 & 3 (19)

Last Week 5



SOUTHWEST PRECINCT

Residential Burglaries

Date Range:

August 2 to 29, 2015

Number of Incidents: 32

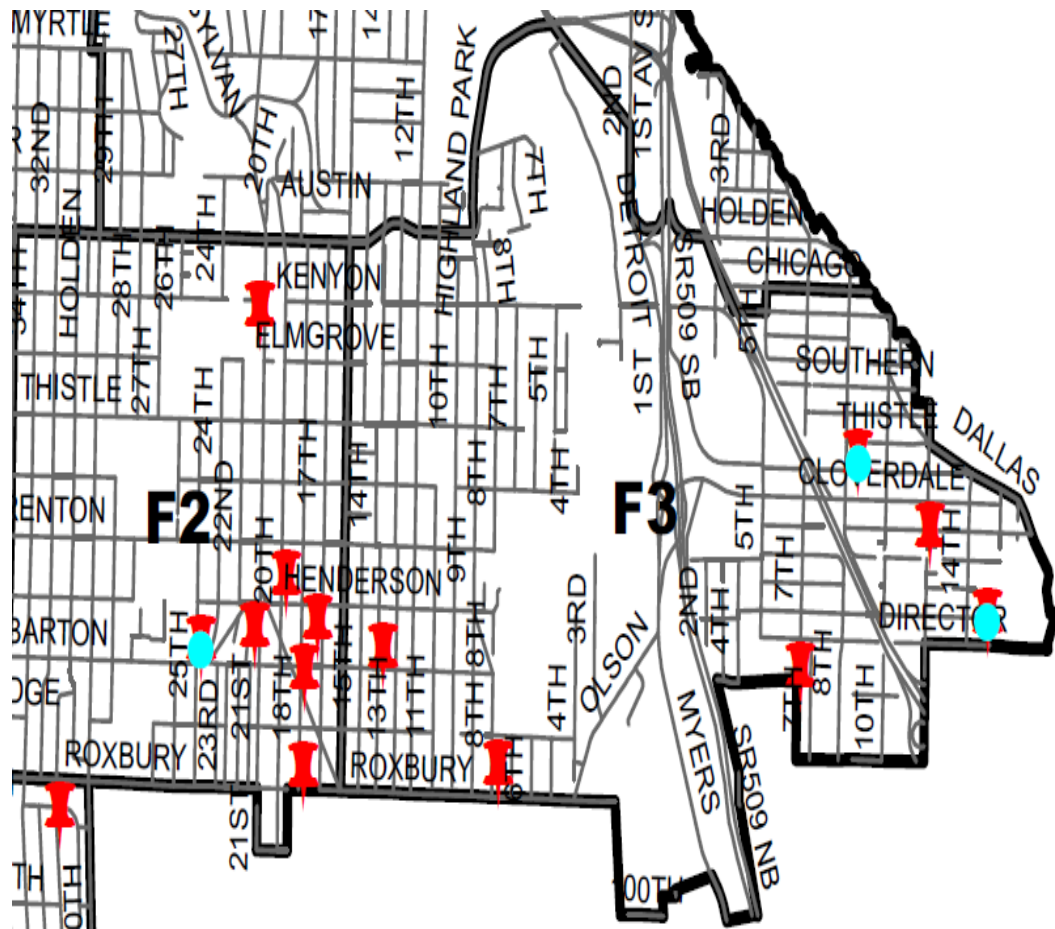
Last Week 7

Sectors Impacted:

Frank – 2 & 3 (16)

Last Week 3

3 Suspects Arrested



SOUTHWEST PRECINCT MCPP

Roxhill / Westwood / Arbor Heights

Priorities

1. Westwood Village – Roxhill Park crime issues
2. Rapid Ride – bus stop safety perceptions
3. General safety concerns near Delridge Way SW & SW Barton

