



Seattle Police Department

# SEA/STAT

January 21, 2015

# PRINCIPLES OF SEASTAT

## **1. Accurate and Timely Information**

Know what is happening

## **2. Effective Tactics**

Have a plan

## **3. Rapid Deployment**

Do it quickly

## **4. Relentless Follow-Up and Assessment**

If it works, do more. If not, do something else

# FORMULATING CRIME REDUCTION STRATEGIES

Focus on...

- *Problem Locations*
- *Prolific Offenders*
- *Repeat and Vulnerable Victims*

# CITYWIDE MAJOR CRIME: 2014 YEAR IN REVIEW

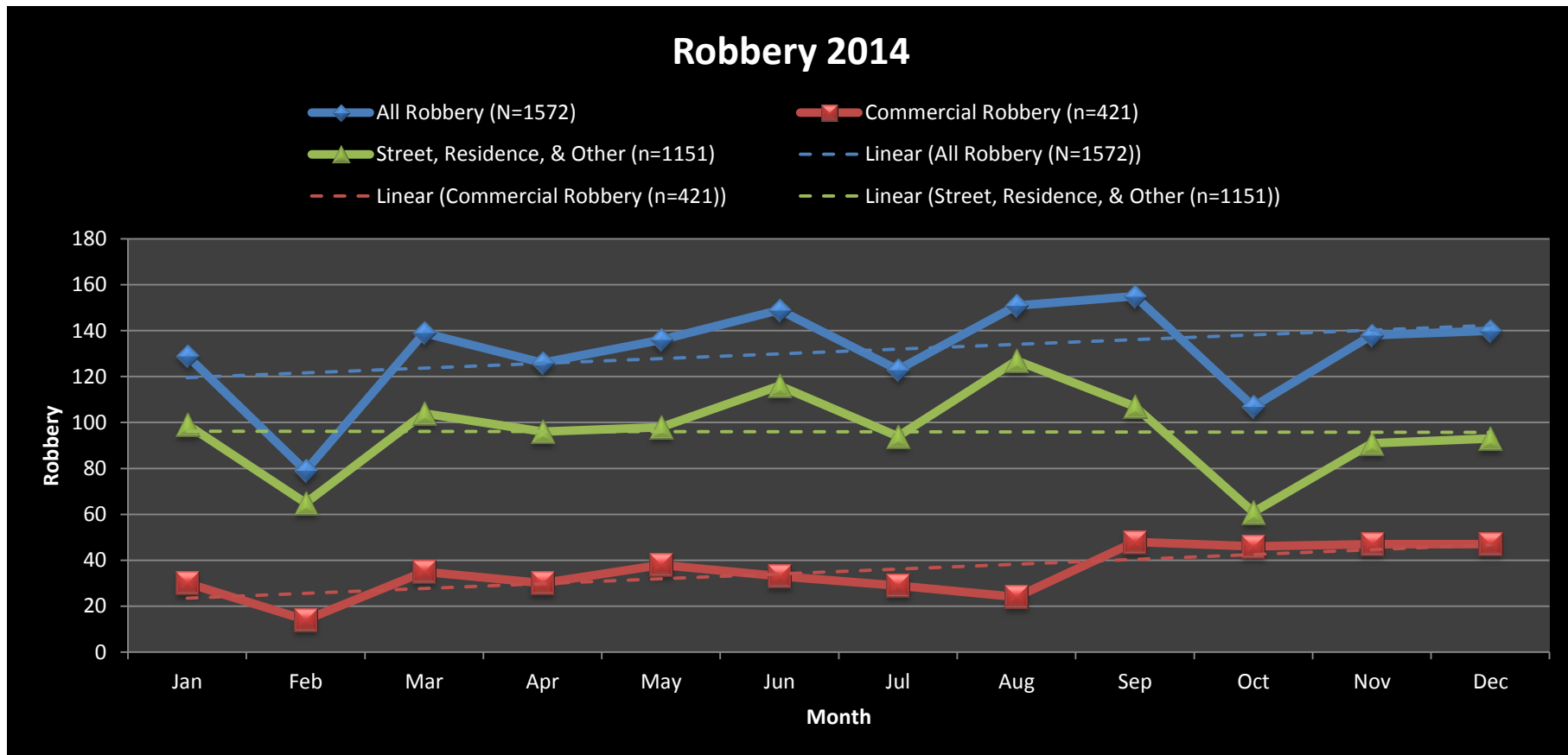
## Part I Offenses for the City of Seattle from January 1, 2014 to December 31, 2014

Part I Offense <sup>1</sup>	Jan	Feb	Mar	Apr	May	Jun	Jul	Aug	Sep	Oct	Nov	Dec	2013 Total	2014 Total	Number Change	Percent Change
<b>Homicide</b>	<b>1</b>	<b>2</b>	<b>0</b>	<b>4</b>	<b>1</b>	<b>5</b>	<b>3</b>	<b>1</b>	<b>3</b>	<b>3</b>	<b>0</b>	<b>3</b>	<b>23</b>	<b>26</b>	<b>3</b>	<b>13%</b>
<b>Rape</b>	<b>8</b>	<b>9</b>	<b>9</b>	<b>7</b>	<b>15</b>	<b>6</b>	<b>16</b>	<b>14</b>	<b>5</b>	<b>15</b>	<b>13</b>	<b>11</b>	<b>101</b>	<b>128</b>	<b>27</b>	<b>27%</b>
<b>Robbery</b>	<b>129</b>	<b>79</b>	<b>139</b>	<b>126</b>	<b>136</b>	<b>149</b>	<b>123</b>	<b>151</b>	<b>155</b>	<b>107</b>	<b>138</b>	<b>140</b>	<b>1599</b>	<b>1572</b>	<b>-27</b>	<b>-2%</b>
- Commercial Robbery	30	14	35	30	38	33	29	24	48	46	47	47	363	421	58	16%
- Street, Residence, & Other	99	65	104	96	98	116	94	127	107	61	91	93	1236	1151	-85	-7%
<b>Aggravated Assault</b>	<b>183</b>	<b>151</b>	<b>161</b>	<b>187</b>	<b>212</b>	<b>193</b>	<b>204</b>	<b>211</b>	<b>223</b>	<b>217</b>	<b>155</b>	<b>162</b>	<b>1972</b>	<b>2259</b>	<b>287</b>	<b>15%</b>
- DV Aggravated Assault	52	54	49	65	68	64	58	63	65	64	44	40	588	686	98	17%
- Non-DV Aggravated Assault	131	97	112	122	144	129	146	148	158	153	111	122	1384	1573	189	14%
<b>Persons Crime</b>	<b>321</b>	<b>241</b>	<b>309</b>	<b>324</b>	<b>364</b>	<b>353</b>	<b>346</b>	<b>377</b>	<b>386</b>	<b>342</b>	<b>306</b>	<b>316</b>	<b>3695</b>	<b>3985</b>	<b>290</b>	<b>8%</b>
<b>Burglary</b>	<b>647</b>	<b>499</b>	<b>549</b>	<b>559</b>	<b>609</b>	<b>601</b>	<b>608</b>	<b>597</b>	<b>614</b>	<b>623</b>	<b>588</b>	<b>608</b>	<b>7396</b>	<b>7102</b>	<b>-294</b>	<b>-4%</b>
- Residential Burglary	424	314	330	347	370	380	381	357	376	374	377	348	4597	4378	-219	-5%
- Non-Residential Burglary	223	185	219	212	239	221	227	240	238	249	211	260	2799	2724	-75	-3%
<b>Larceny-Theft<sup>2</sup></b>	<b>2303</b>	<b>1938</b>	<b>2327</b>	<b>2574</b>	<b>2518</b>	<b>2412</b>	<b>2306</b>	<b>2376</b>	<b>2298</b>	<b>2460</b>	<b>2182</b>	<b>2221</b>	<b>25386</b>	<b>27915</b>	<b>2529</b>	<b>10%</b>
- Car Prowl	1329	1086	1361	1516	1400	1284	1183	1212	1168	1315	1218	1219	13114	15291	2177	17%
<b>Motor Vehicle Theft</b>	<b>443</b>	<b>370</b>	<b>401</b>	<b>483</b>	<b>532</b>	<b>613</b>	<b>542</b>	<b>383</b>	<b>424</b>	<b>537</b>	<b>386</b>	<b>303</b>	<b>4220</b>	<b>5417</b>	<b>1197</b>	<b>28%</b>
- Stolen Locally and Recovered Locally	308	289	312	408	496	506	506	358	317	436	341	237	3353	4514	1161	35%
<b>Property Crime</b>	<b>3393</b>	<b>2807</b>	<b>3277</b>	<b>3616</b>	<b>3659</b>	<b>3626</b>	<b>3456</b>	<b>3356</b>	<b>3336</b>	<b>3620</b>	<b>3156</b>	<b>3132</b>	<b>37002</b>	<b>40434</b>	<b>3432</b>	<b>9%</b>
<b>Total</b>	<b>3714</b>	<b>3048</b>	<b>3586</b>	<b>3940</b>	<b>4023</b>	<b>3979</b>	<b>3802</b>	<b>3733</b>	<b>3722</b>	<b>3962</b>	<b>3462</b>	<b>3448</b>	<b>40697</b>	<b>44419</b>	<b>3722</b>	<b>9%</b>

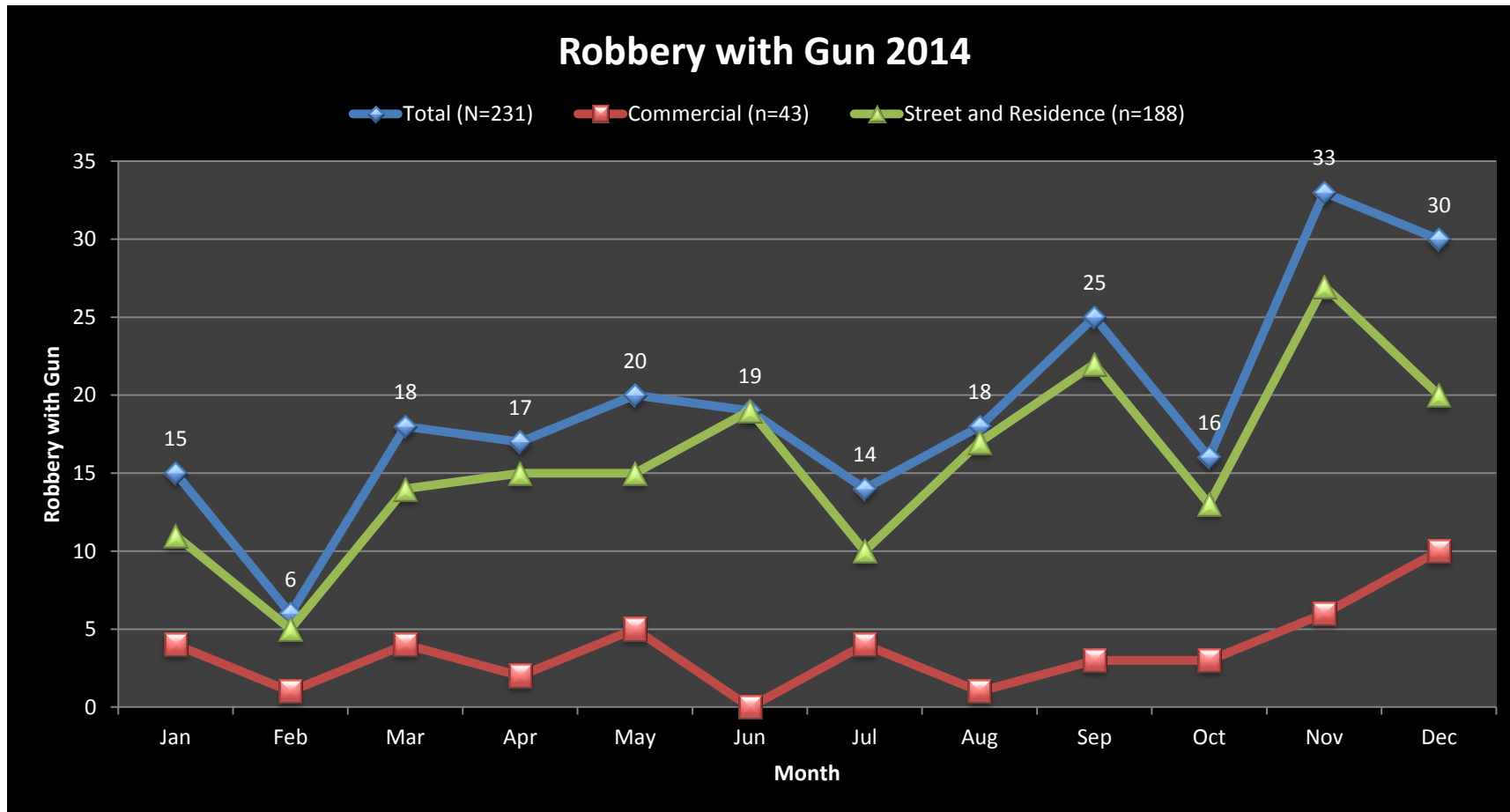
<sup>1</sup>Part I Offense counts are derived from SPD Data Center Monthly Returns. Crime classifications are based on FBI UCR Summary guidelines. Monthly crime counts are static and aggregated over time, and should not be used to compare operational or dynamic data.

<sup>2</sup>Larceny-Theft counts were extracted on 1/17/15 from SPD RMS in order to account for a backlog of online reporting that occurred in 2013, and will not match data submitted in the Monthly Returns.

# ROBBERY 2014



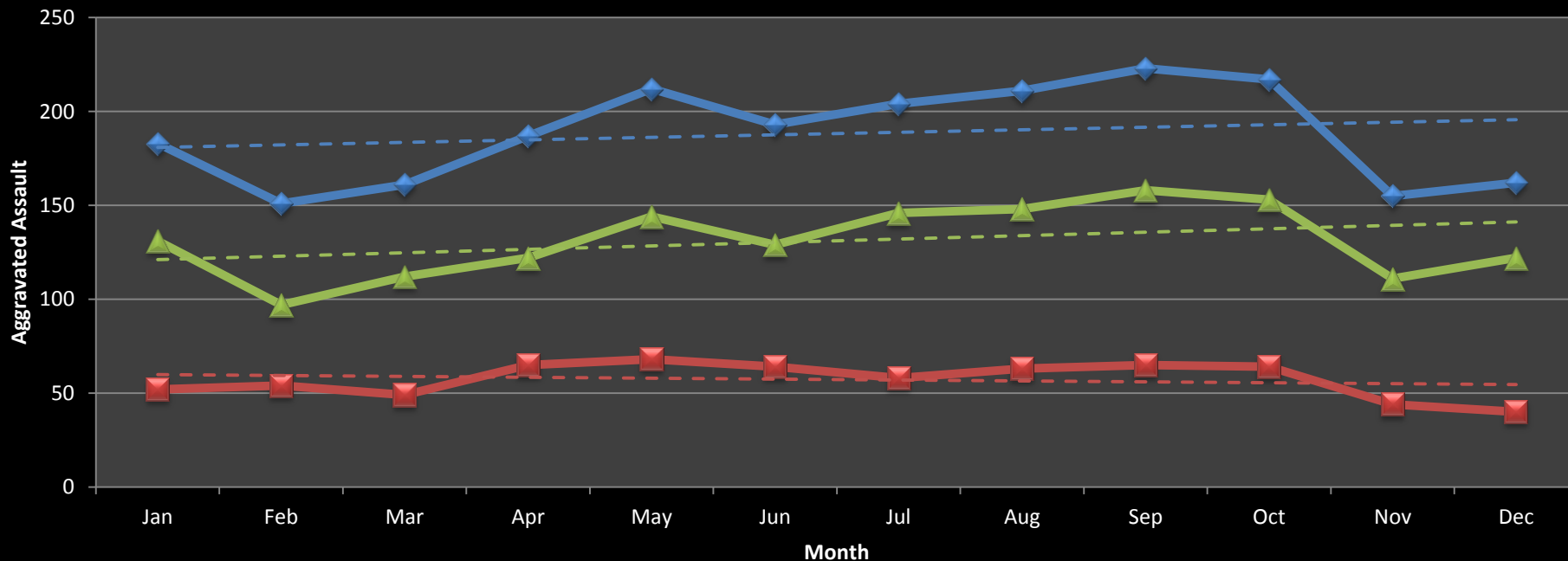
# ROBBERY WITH GUN 2014



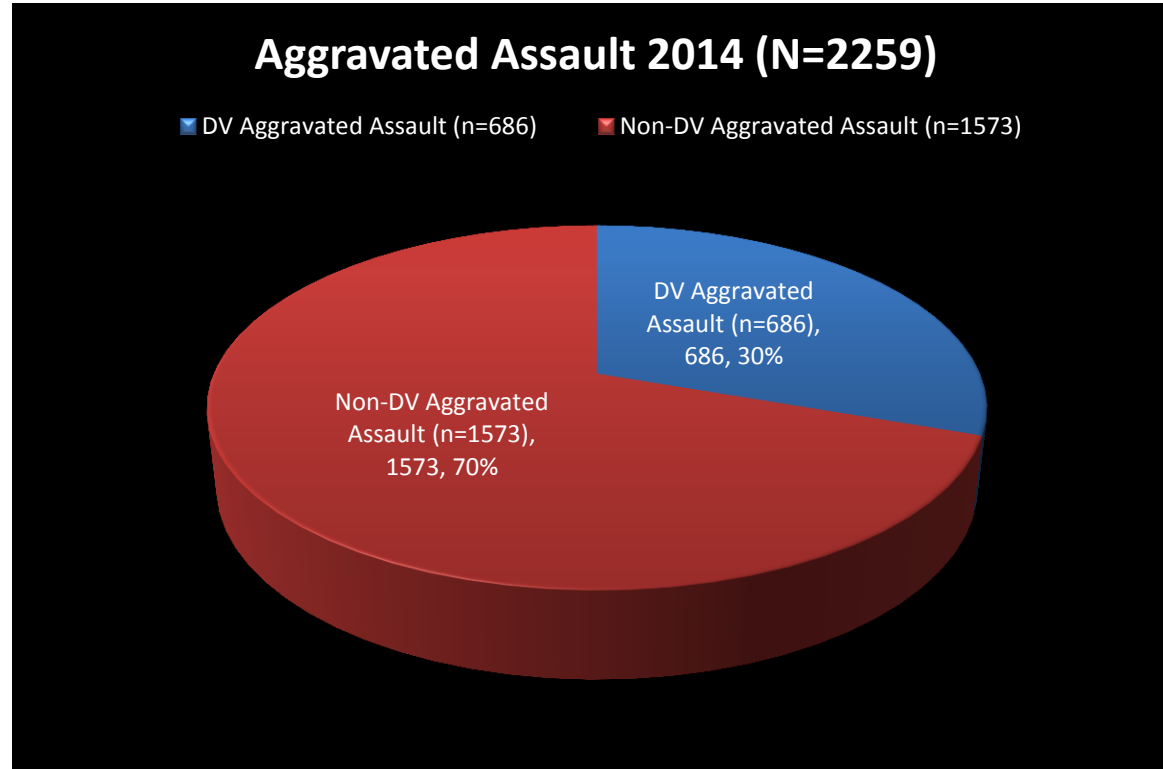
# AGGRAVATED ASSAULT 2014

## Aggravated Assault 2014

- ◆ All Aggravated Assault (N=2259)
- ▲ Non-DV Aggravated Assault (n=1573)
- ◆ DV Aggravated Assault (n=686)
- - Linear (All Aggravated Assault (N=2259))
- - Linear (DV Aggravated Assault (n=686))
- - Linear (Non-DV Aggravated Assault (n=1573))

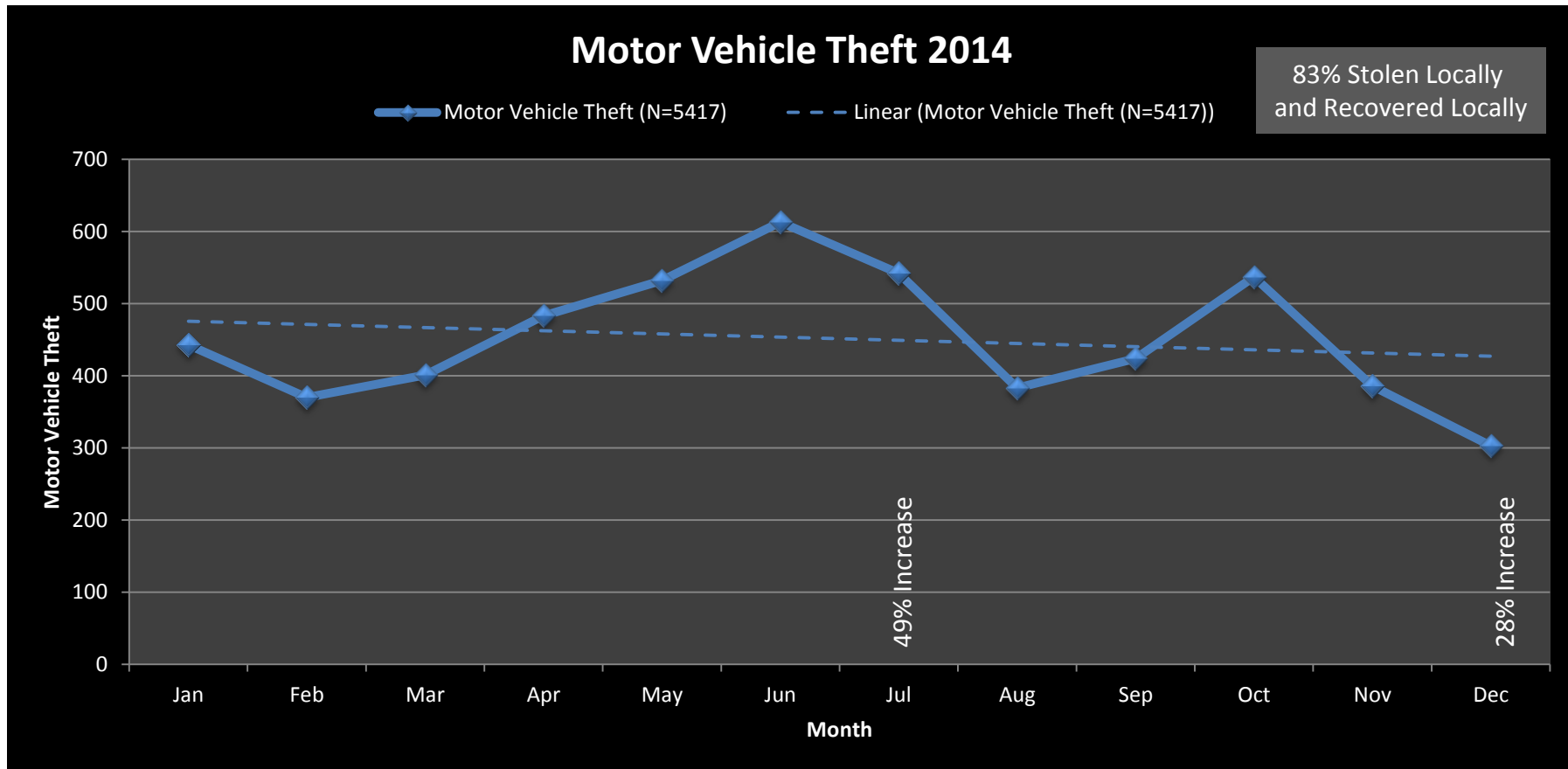


# AGGRAVATED ASSAULT 2014

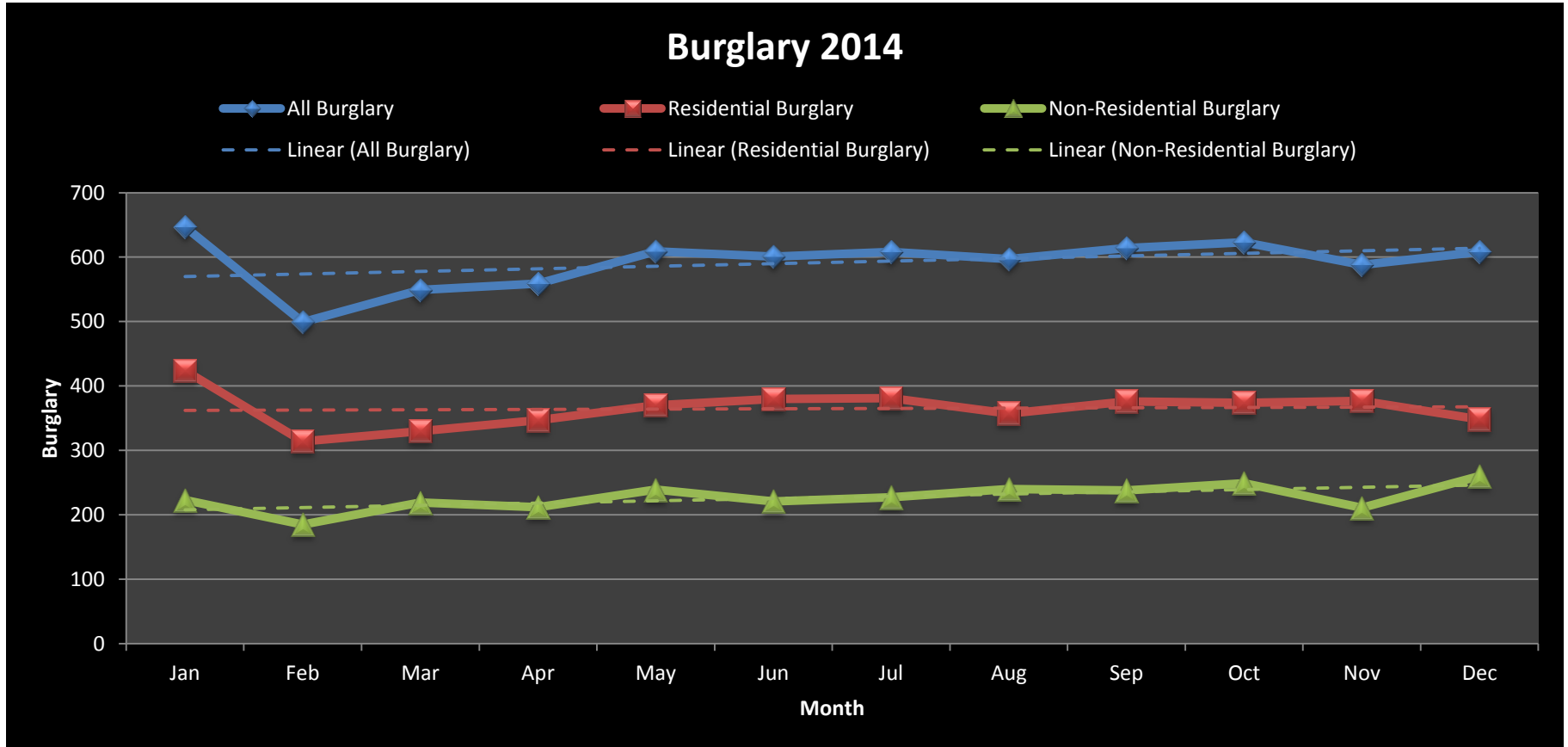




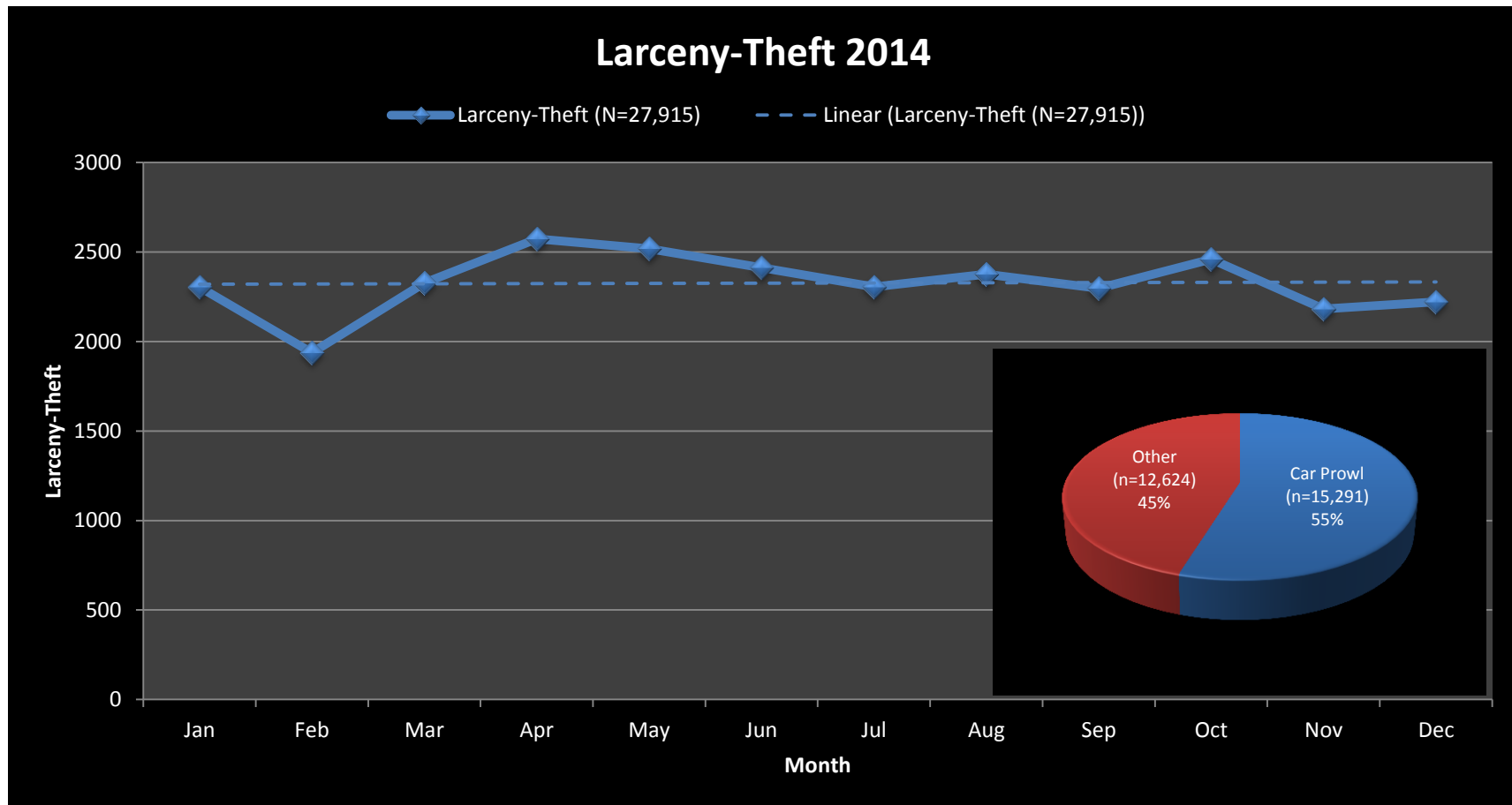
# MOTOR VEHICLE THEFT 2014



# BURGLARY 2014



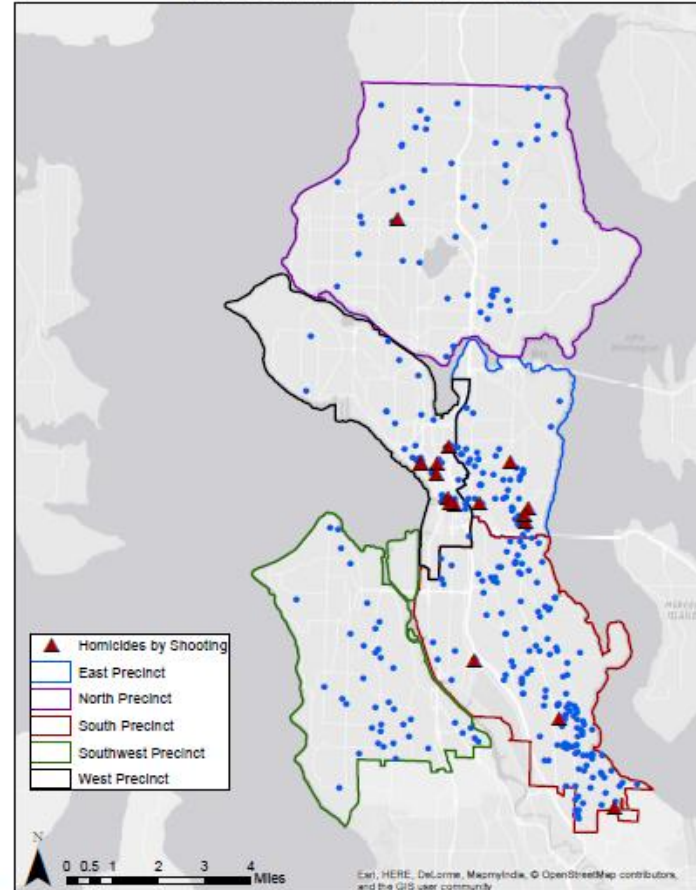
# LARCENY-THEFT 2014



# Shots Fired 2014

- 353 incidents occurred
- 255 incidents w/o injury
- 98 incidents with injury or death
- 26 arrests were made at time of incident
- 9% increase over 2012  
22% increase over 2013
- Sam Sector was the most active sector with 88 incidents

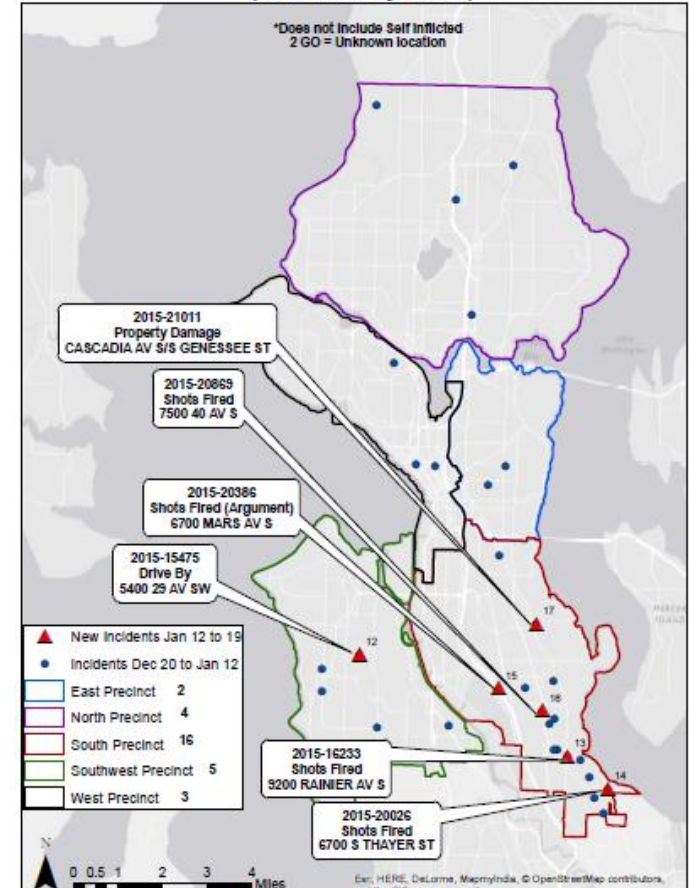
Shots Fired 2014  
(17 Homicides by Shooting)



# Shots Fired 12/20/14-01/19/15




- 32 incidents occurred
- No arrests were made at time of incident
- South Precinct was the most active

Shots Fired December 20, 2014 to January 19, 2015  
(32 GOs citywide\*)



# CITYWIDE AUTO THEFT & CAR PROWL: 28 DAYS

Auto Theft and Car Prowl for December 21, 2014 to January 17, 2015

Crime Category	Week 1 12/21-12/27	Week 2 12/28-1/3	Week 3 1/4-1/10	Week 4 1/11-1/17	Total	Line Graph
Auto Theft	76	92	83	77	328	
Car Prowl	227	243	265	194	929	
<b>Total</b>	<b>303</b>	<b>335</b>	<b>348</b>	<b>271</b>	<b>1257</b>	

SeaStat Dashboard

# PRECINCT UPDATES

**West**

# WEST PRECINCT MAJOR CRIME: 28 DAYS

West Precinct Major Crime for December 21, 2014 to January 17, 2015

Crime Category	Week 1 12/21-12/27	Week 2 12/28-1/3	Week 3 1/4-1/10	Week 4 1/11-1/17	Total	Line Graph
Homicide	0	0	0	0	0	
Rape	2	0	3	0	5	
Robbery	10	8	12	17	47	
Aggravated Assault	8	9	3	11	31	
<b>Person Crime</b>	<b>20</b>	<b>17</b>	<b>18</b>	<b>28</b>	<b>83</b>	
Burglary	43	33	27	17	120	
Larceny-Theft	140	139	129	100	508	
Auto Theft	10	14	5	10	39	
<b>Property Crime</b>	<b>193</b>	<b>186</b>	<b>161</b>	<b>127</b>	<b>667</b>	
<b>Total</b>	<b>213</b>	<b>203</b>	<b>179</b>	<b>155</b>	<b>750</b>	

Data counts are dynamic and subject to change based on transcription and reclassification.

Crime categories are incident-based (not victim) and follow the FBI UCR hierarchy classification guideline.

Data was extracted on 1/20/15 from SPD RMS (Reposit) and exclude unfounded and non precinct-based locations.



# West Precinct Car Prowl Hot Spot

Date Range: December 18, 2014 – January 12, 2015  
(28 Days)

Number of Reports: 296 Total for the West Precinct.

150 (51%) of all West Precinct Car Prowls occurred between Denny Way & Columbia St. (7.5% of the total precinct area).

Approximately 90% of all West Precinct Car Prowls occurred on the street or in open street level paid parking lots.

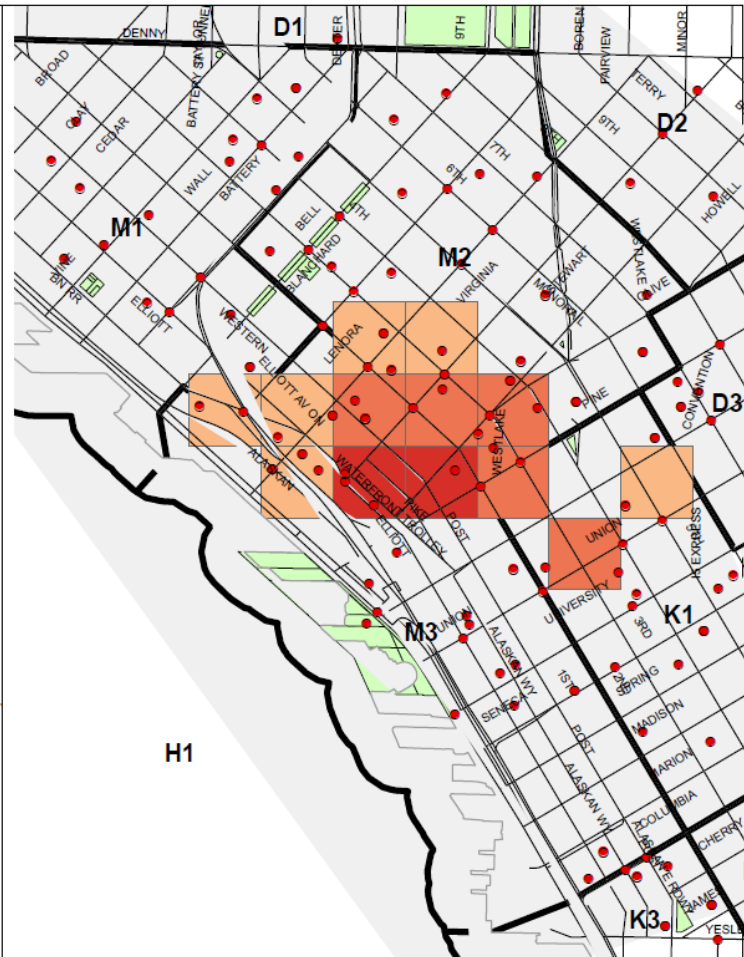
42 (14%) of all West Precinct Car Prowls occurred within the illustrated Hot Spot (1% of the total precinct area).

Problem Location: Consistent Hot Spot over time. 15% of all 2014 West Precinct Car Prowls occurred within the same Hot Spot.

Hot Spot Specific Information:

Time Range: 24 (57%) occurred during business hours  
9 (21%) occurred during dinner service hours.

Most Common Days: Friday, Saturday, Sunday and Monday



# PRECINCT UPDATES



## Southwest

# SOUTHWEST PRECINCT MAJOR CRIME: 28 DAYS

## Southwest Precinct Major Crime for December 21, 2014 to January 17, 2015

Crime Category	Week 1 12/21-12/27	Week 2 12/28-1/3	Week 3 1/4-1/10	Week 4 1/11-1/17	Total	Line Graph
Homicide	0	0	0	0	0	
Rape	1	0	0	0	1	
Robbery	4	2	0	3	9	
Aggravated Assault	4	2	2	6	14	
<b>Person Crime</b>	<b>9</b>	<b>4</b>	<b>2</b>	<b>9</b>	<b>24</b>	
Burglary	16	20	17	13	66	
Larceny-Theft	32	43	29	23	127	
Auto Theft	11	19	19	16	65	
<b>Property Crime</b>	<b>59</b>	<b>82</b>	<b>65</b>	<b>52</b>	<b>258</b>	
<b>Total</b>	<b>68</b>	<b>86</b>	<b>67</b>	<b>61</b>	<b>282</b>	

Data counts are dynamic and subject to change based on transcription and reclassification.

Crime categories are incident-based (not victim) and follow the FBI UCR hierarchy classification guideline.

Data was extracted on 1/20/15 from SPD RMS (Reposit) and exclude unfounded and non precinct-based locations.

# PRECINCT UPDATES

## South

# SOUTH PRECINCT MAJOR CRIME: 28 DAYS

South Precinct Major Crime for December 21, 2014 to January 17, 2015

Crime Category	Week 1 12/21-12/27	Week 2 12/28-1/3	Week 3 1/4-1/10	Week 4 1/11-1/17	Total	Line Graph
Homicide	0	1	0	0	1	
Rape	0	1	0	0	1	
Robbery	4	9	5	5	23	
Aggravated Assault	3	6	3	6	18	
<b>Person Crime</b>	<b>7</b>	<b>17</b>	<b>8</b>	<b>11</b>	<b>43</b>	
Burglary	18	11	21	10	60	
Larceny-Theft	38	45	72	48	203	
Auto Theft	22	23	21	19	85	
<b>Property Crime</b>	<b>78</b>	<b>79</b>	<b>114</b>	<b>77</b>	<b>348</b>	
<b>Total</b>	<b>85</b>	<b>96</b>	<b>122</b>	<b>88</b>	<b>391</b>	

Data counts are dynamic and subject to change based on transcription and reclassification.

Crime categories are incident-based (not victim) and follow the FBI UCR hierarchy classification guideline.

Data was extracted on 1/20/15 from SPD RMS (Reposit) and exclude unfounded and non precinct-based locations.

# South Precinct Car Prowl

**Total Number of Incidents: 36**

## Day of Week

**Sunday: 8**  
**Monday: 2**  
**Tuesday: 1**  
**Wednesday: 3**  
**Thursday: 3**  
**Friday: 8**  
**Saturday: 11**

## Incidents at a Single Address

2746 1 Av S (Parking Lot): 3  
 1 Av S/S Lander St: 2  
 110 S Horton St: 2  
 2946 1 Av S: 2  
 6 Av S/S Stacey St: 2  
 Occidental Av S/S Holgate St: 2

## High Density Area

Twenty-four of the incidents in O2 occurred between S Holgate St, 2 Av S, S Horton St, and Utah Av S. Twenty-one occurred on Friday (6), Saturday (8), or Sunday (7). Fourteen incidents occurred between 1600 hours and 0145 hours.

