



Seattle Police Department

SEA / STAT

December 17, 2014

PRINCIPLES OF SEASTAT

1. Accurate and Timely Information

Know what is happening

2. Effective Tactics

Have a plan

3. Rapid Deployment

Do it quickly

4. Relentless Follow-Up and Assessment

If it works, do more. If not, do something else

FORMULATING CRIME REDUCTION STRATEGIES

Focus on...

- *Problem Locations*
- *Prolific Offenders*
- *Repeat and Vulnerable Victims*

CITYWIDE MAJOR CRIME: 28 DAYS

Citywide Major Crime for November 16, 2014 to December 13, 2014

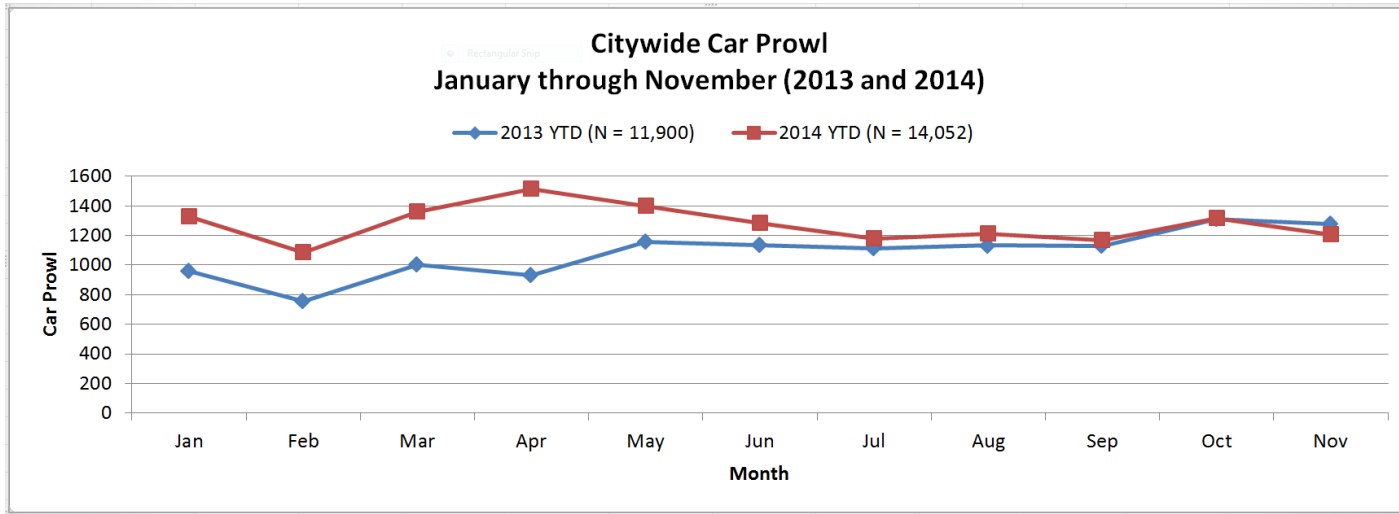
Crime Category	Week 1 11/16-11/22	Week 2 11/23-11/29	Week 3 11/30-12/6	Week 4 12/7-12/13	Total	Line Graph
Homicide	0	0	0	1	1	
Rape	1	3	3	2	9	
Robbery	39	24	31	34	128	
Aggravated Assault	32	30	38	29	129	
Person Crime	72	57	72	66	267	
Burglary	138	133	113	96	480	
Larceny-Theft	518	456	426	420	1820	
Auto Theft	87	73	68	53	281	
Property Crime	743	662	607	569	2581	
Total	815	719	679	635	2848	

Data counts are dynamic and subject to change based on transcription and reclassification.

Crime categories are incident-based (not victim) and follow the FBI UCR hierarchy classification guideline.

Data was extracted on 12/15/14 from SPD RMS (Reposit) and excludes unfounded and non precinct-based locations.

CITYWIDE CAR PROWL

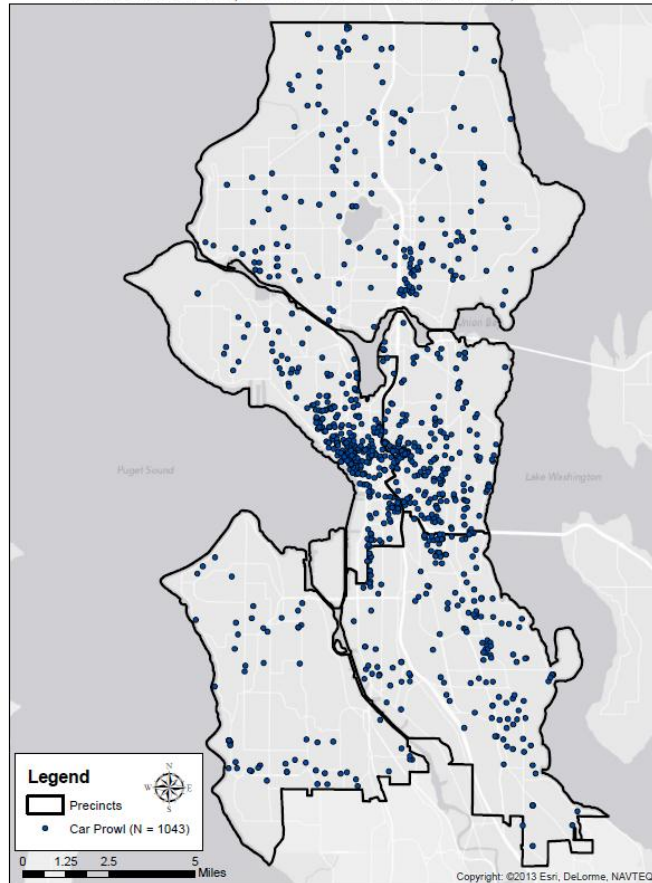


Citywide Car Prowl for November 16, 2014 to December 13, 2014 by Precinct

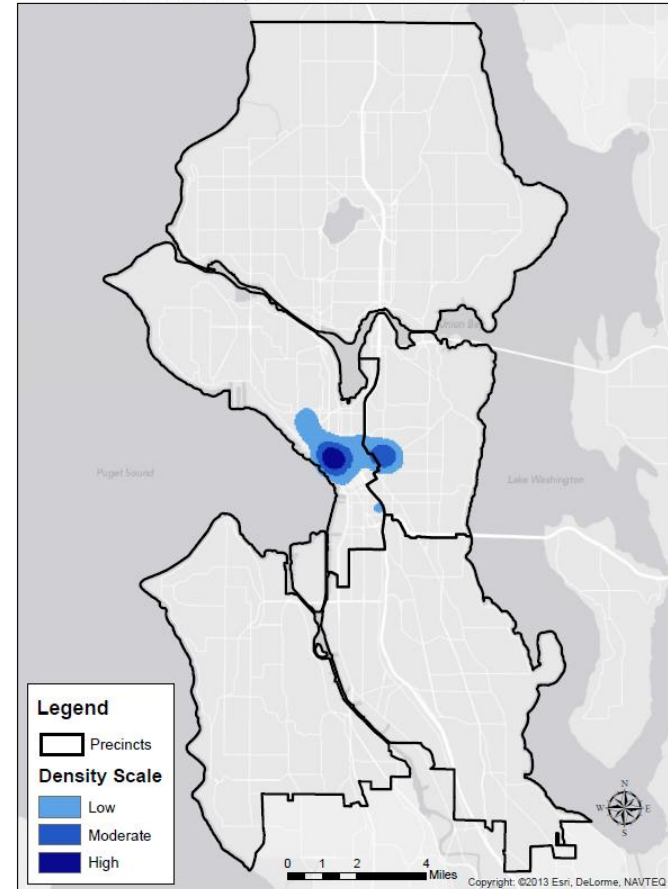
Precinct	Week 1	Week 2	Week 3	Week 4	Total	Line Graph
	11/16-11/22	11/23-11/29	11/30-12/6	12/7-12/13		
East	75	44	57	80	256	
North	64	43	33	44	184	
South	50	45	39	43	177	
Southwest	14	23	19	11	67	
West	86	106	85	82	359	
Total	289	261	233	260	1043	

CITYWIDE CAR PROWL: 28 DAYS

Car Prowl for the City of Seattle: 28 Days
November 16, 2014 to December 13, 2014

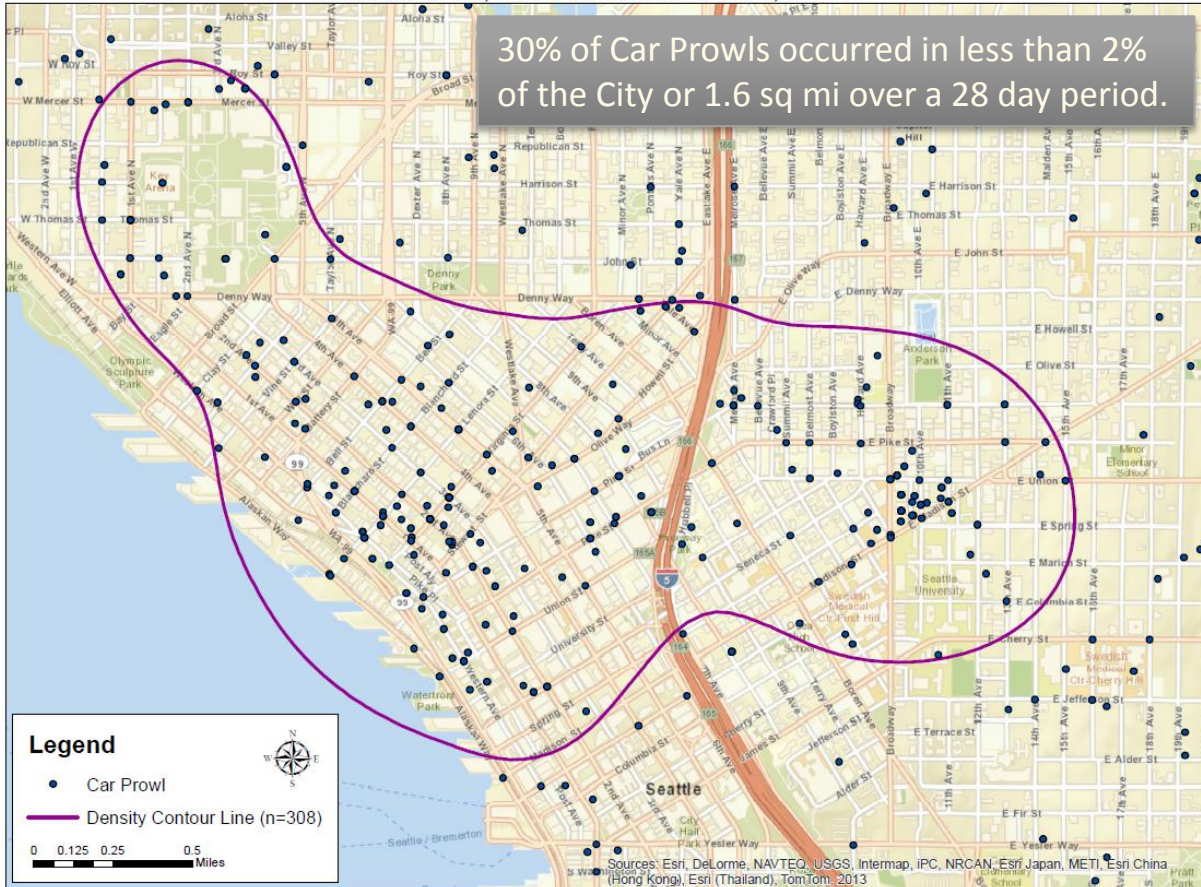


Car Prowl for the City of Seattle: 28 Days
November 16, 2014 to December 13, 2014



CITYWIDE CAR PROWL: 28 DAYS

Car Prowl for the City of Seattle: 28 Days
November 16, 2014 to December 13, 2014



SHOTS FIRED

Shots Fired (N = 14)
November 16, 2014 to December 15, 2014

2014-410744
942 27 Av
Drive By

- ▲ Incidents 12-10 to 12-15
- Incidents 11/16 to 12/09
- East Precinct 2
- North Precinct
- South Precinct 9
- Southwest Precinct
- West Precinct 3



* Does not include self-inflicted

Shots Fired by Incident Type and Precinct
November 16, 2014 to December 15, 2014

Type of Incident	Breakdown	Precinct
Assaults - 6	Club related - 1	East - 1
	Attempt - 1	West - 3
		South - 2
Self Inflicted - 5	Suicide or Attempted - 4	Southwest - 2
	Unintentional - 1	North - 2
		West - 1
Homicide - 1	Club related - 1	South - 1
Shots Fired - 2		South - 2
Property Damage - 5	Club related - 1	South - 4
	Drive by - 2	East - 1

PRECINCT UPDATES

West

WEST PRECINCT MAJOR CRIME: 28 DAYS

West Precinct Major Crime for November 16, 2014 to December 13, 2014

Crime Category	Week 1 11/16-11/22	Week 2 11/23-11/29	Week 3 11/30-12/6	Week 4 12/7-12/13	Total	Line Graph
Homicide	0	0	0	0	0	
Rape	1	0	1	0	2	
Robbery	14	5	11	8	38	
Aggravated Assault	10	9	11	8	38	
Person Crime	25	14	23	16	78	
Burglary	21	28	21	17	87	
Larceny-Theft	168	180	163	126	637	
Auto Theft	8	19	11	6	44	
Property Crime	197	227	195	149	768	
Total	222	241	218	165	846	

Data counts are dynamic and subject to change based on transcription and reclassification.

Crime categories are incident-based (not victim) and follow the FBI UCR hierarchy classification guideline.

Data was extracted on 12/15/14 from SPD RMS (Reposit) and excludes unfounded and non precinct-based locations.

WEST PRECINCT CRIME PATTERNS

Downtown Metro Stop Street Robbery Pattern

Time Range: **1100-2300 Hrs.**

Events: **6**

Date Range: **11-13 to 12-07-2014**

Avg Days Between Hits: **5**

Repeat Day: **Sunday**

MO: Suspect uses fists to attack victim. Rummages through pockets or grabs valuables. Dropped by victims. One victim had a Disability another Drunk. Events at Metro Stops. Will work Alone or with male and female accomplices. Female suspect Displayed a knife #384069 and #399119.



Lower Queen Anne Residential Burglary Pattern

Time Range: **1500-2130 Hrs.**

Events: **3**

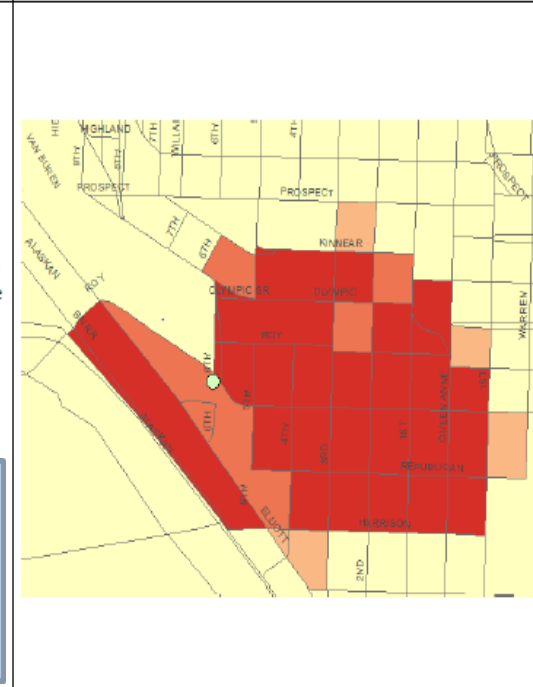
Date Range: **12-02 to 12-04-2014**

Avg Days Between Hits: **1**

Repeat Day:

MO: Suspects attempt to enter building via Exit/Emergency stairwell doors. Suspects give Impression they are lost and looking for a Resident "The Mc Cormicks".

Suspect Described: W/M/30's/6'00:one w/ Yellow Jacket, other wearing Dark Blue Jacket. Possible Past Burg suspects matching



PRECINCT UPDATES



Southwest

SOUTHWEST PRECINCT MAJOR CRIME: 28 DAYS

Southwest Precinct Major Crime for November 16, 2014 to December 13, 2014

Crime Category	Week 1 11/16-11/22	Week 2 11/23-11/29	Week 3 11/30-12/6	Week 4 12/7-12/13	Total	Line Graph
Homicide	0	0	0	0	0	
Rape	0	1	0	0	1	
Robbery	4	2	0	2	8	
Aggravated Assault	3	2	3	4	12	
Person Crime	7	5	3	6	21	
Burglary	13	18	10	10	51	
Larceny-Theft	29	39	38	30	136	
Auto Theft	12	12	8	9	41	
Property Crime	54	69	56	49	228	
Total	61	74	59	55	249	

Data counts are dynamic and subject to change based on transcription and reclassification.

Crime categories are incident-based (not victim) and follow the FBI UCR hierarchy classification guideline.

Data was extracted on 12/15/14 from SPD RMS (Reposit) and excludes unfounded and non precinct-based locations.

PRECINCT UPDATES

South

SOUTH PRECINCT MAJOR CRIME: 28 DAYS

South Precinct Major Crime for November 16, 2014 to December 13, 2014

Crime Category	Week 1 11/16-11/22	Week 2 11/23-11/29	Week 3 11/30-12/6	Week 4 12/7-12/13	Total	Line Graph
Homicide	0	0	0	1	1	
Rape	0	0	1	0	1	
Robbery	6	0	5	6	17	
Aggravated Assault	5	5	6	6	22	
Person Crime	11	5	12	13	41	
Burglary	31	20	15	15	81	
Larceny-Theft	69	62	56	66	253	
Auto Theft	22	11	12	15	60	
Property Crime	122	93	83	96	394	
Total	133	98	95	109	435	

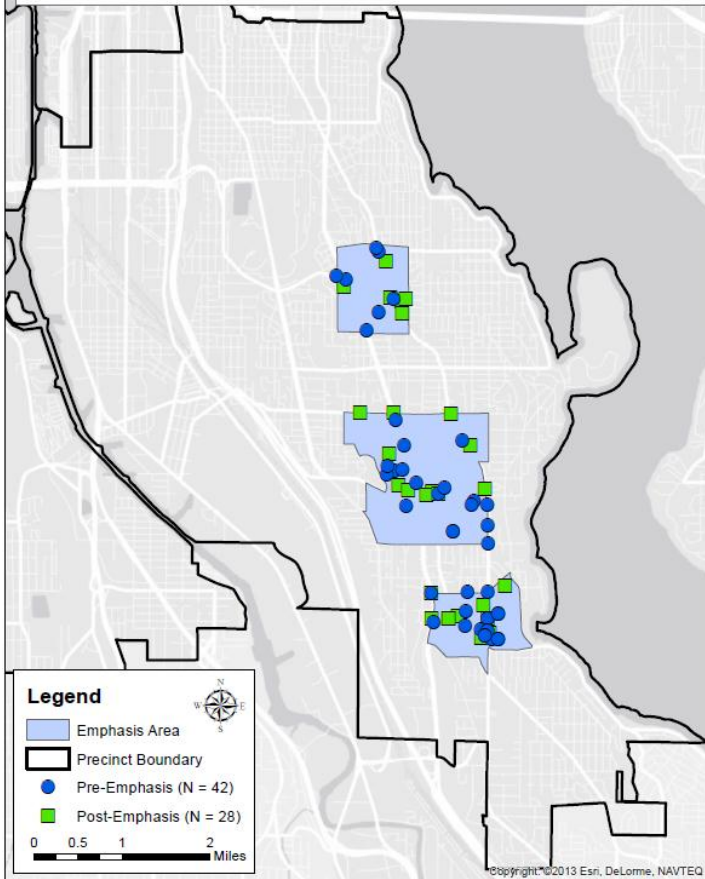
Data counts are dynamic and subject to change based on transcription and reclassification.

Crime categories are incident-based (not victim) and follow the FBI UCR hierarchy classification guideline.

Data was extracted on 12/15/14 from SPD RMS (Reposit) and excludes unfounded and non precinct-based locations.

SOUTH PRECINCT ROBBERY EMPHASIS

South Precinct Street Robbery: Pre and Post Emphasis Area
May 1, 2014 to November 30, 2014



South Precinct Street Robbery
May 1, 2014 through November 30, 2014

