



Seattle
Parks & Recreation

Indoor Facility Rentals

Pinehurst Shelterhouse



Madrona Shelterhouse



Alki Beach Bathhouse
Bradner Gardens
Dakota Place Park
Golden Gardens Bathhouse
Madrona Shelterhouse
Mount Baker Rowing &
Sailing Center



Ward Springs Pumpouse



Pritchard Beach Bathhouse

Pinehurst Shelterhouse
Pritchard Beach Bathhouse
Ross Shelterhouse
Ward Springs Pumpouse
Magnuson Park Hangar 30
Magnuson Park Officers Club

Event Scheduling Office
Seattle Parks and Recreation
300 Elliot Ave W, Suite 100
Seattle, WA 98119

Email: SPRevents@seattle.gov
Phone: 206-684-4080 ext. 1

Click [HERE](#) or
scan for the
Indoor Rentals
webpage



Tour Schedule

Monday	
Tuesday	Golden Gardens Bathhouse - 6:30PM to 8:30PM Hangar 30 / Officers Club - 5:30PM to 7:30PM
Wednesday	*Pritchard Beach Bathhouse - 10AM to 12PM *Every 4th week Mount Baker Rowing & Sailing Center - 3PM to 5PM
Thursday	Alki Beach Bathhouse - 6PM to 8PM
Friday	**Golden Gardens Bathhouse - 8AM to 10AM ** Every 1st & 3rd week Dakota Park Place - 8:30AM to 10:30AM
Saturday	

*Pritchard Beach Bathhouse tours occur every 4th Wednesday.

** Golden Gardens Bathhouse tours occur every Tuesday AND on the 1st and 3rd Friday.

NO TOURS ARE OFFERED FOR:

Bradner Gardens
Madrona Shelterhouse
Pinehurst Shelterhouse
Ross Shelterhouse

Alki Beach Bathhouse

2701 Alki Ave SW Seattle, WA 98116

Sitting steps from the Puget Sound, the Bathhouse offers stunning views of the Sound, Elliot Bay, the Olympics and historic landmarks. This location is within walking distance of numerous shops, restaurants and activities. The patio can be added for additional space and/or a beer garden.

Available Hours: 6 AM to 9:30 PM

Capacity: Table Seating - 84 | Standing - 100

Fees:

- \$250 OR \$500 - Refundable damage deposit without alcohol / with alcohol
- \$130 / hour - Main Room and Painting Room (4-hour minimum)
- \$45 / hour - Patio add-on for food truck or adjacent lawn, must be full duration of rental
- \$39 / hour - Per staff fee + one additional hour; fees vary according to event types and hours
- \$39 - Non-refundable booking fee
- \$150 - Maintenance fee
- \$78 - Alcohol fee (if applicable)

*The minimum rental fee is \$1,154 (includes refundable damage deposit).

Equipment:

- 5—5-ft. round tables
- 18—6-ft. rectangular tables
- 85 stackable chairs

Amenities:

- Microwave
- Indoor All Gender Restroom
- Scenic View
- Bar
- Sinks (2)



Bradner Gardens

1730 Bradner Pl. S Seattle, WA 98144

Winding paths connect the many features of the gardens, including seven ornamental theme gardens. This cozy event space nestled in South Seattle includes a picnic shelter, and offers a charming setting perfect for your next small gathering, team retreat, birthday party, or intimate wedding celebration.

Available Hours: 6 AM to 11:00 PM

Capacity: Table Seating - 20 | Standing - 35

Fees:

- \$250 OR \$500 - Refundable damage deposit without alcohol / with alcohol
- \$35 / hour - Main Room (2-hour minimum)
- \$39 / hour - Per staff fee + one additional hour; fees vary according to event types and hours
- \$39 - Non-refundable booking fee
- \$25 - Maintenance fee
- \$78 - Alcohol fee (if applicable)

*The minimum rental fee for this facility is \$501 (includes refundable damage deposit).

Equipment:

- 1-8ft. rectangular table (seats up to 10)
- 28 chairs
- Bench seating against walls

Amenities:

- Play Area
- Restrooms
- Basketball Court
- Community Garden



Dakota Place Park

4304 SW Dakota St, Seattle, WA 98116

With rustic brick, wood floors, projectors and surround sound, Dakota Place is a perfect mix of modern and vintage. It boasts a main room, with a smaller side room which connects to a large outdoor patio space. This historic building is conveniently located within walking distance of shops, restaurants, and nearby activities, and includes a small lawn.

Available Hours: 6 AM to 10 PM

Capacity: Table Seating - 110 | Standing - 160

Fees:

- \$250 OR \$500 - Refundable damage deposit without alcohol / with alcohol
- \$83 / hour - Main Room (4-hour minimum)
- \$50 / hour - Patio add-on (Optional, in addition to Main Room)
- \$39 / hour - Per staff fee + one additional hour; fees vary according to event types and hours
- \$39 - Non-refundable booking fee
- \$150 - Maintenance fee
- \$78 - Alcohol fee (if applicable)

*The minimum rental fee for this facility is \$966 (includes refundable damage deposit).

Equipment:

- 9—46-in. round tables (seats 4-6 each)
- 7—6-ft. rectangular tables (seats 6 each)
- 70 chairs

Amenities:

- Microwave
- Sink
- Flat-screen TV
- 2 projectors and screens
- Indoor All Gender Restrooms (2)



Golden Gardens Bathhouse

8498 Seaview Pl NW, Seattle, WA 98117

Boasting views of Puget Sound this classic brick building sits steps from the beach on one side and a nearby playground on the other. The space also includes a green room and sizable catering area. A large grass meadow just northeast of the building is perfect for an outdoor wedding ceremony.

Available Hours: 6 AM to 9:30 PM

Capacity: Table Seating - 140 | Standing - 200

Fees:

- \$250 OR \$500 - Refundable damage deposit without alcohol / with alcohol
- \$290 / hour - Main Room (4-hour minimum Mon-Thurs, 8-hour minimum Fri-Sun)
- \$78 / hour - Per staff fee + one additional hour; fees vary according to event types and hours
- \$39 - Non-refundable booking fee
- \$150 - Maintenance fee
- \$78 - Alcohol fee (if applicable)

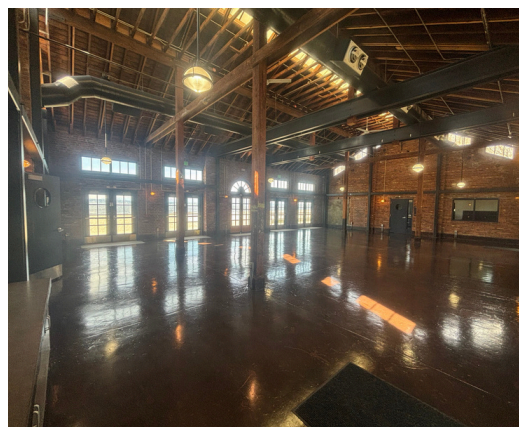
*The minimum rental fee for this facility is \$1,989 (includes refundable damage deposit).

Equipment:

- 17—5-ft. round tables (seats 4-6 each)
- 23—6-ft. rectangular tables (seats 6 each)
- 160 chairs

Amenities:

- | | | |
|----------------|----------------|--------------------|
| • Microwave | • Refrigerator | • Scenic View |
| • Warming Oven | • Restrooms | • Basketball Court |
| | | • Playground |



Madrona Shelterhouse

3211 E Spring St, Seattle, WA 98122

This cozy space sits in the heart of the family friendly neighborhood of Madrona. With floor to ceiling natural light in an idyllic community park there is a little something for everyone. Perfect for family gatherings, birthdays, special events, and meetings. Reservations include two picnic tables.

Available Hours: 6 AM to 11 PM

Capacity: Table Seating - 20 | Standing - 35

Fees:

- \$250 OR \$500 - Refundable damage deposit without alcohol / with alcohol
- \$35 / hour - Main Room (2-hour minimum)
- \$39 / hour - Per staff fee + one additional hour; fees vary according to event types and hours
- \$39 - Non-refundable booking fee
- \$25 - Maintenance fee
- \$78 - Alcohol fee (if applicable)

*The minimum rental fee for this facility is \$501 (includes refundable damage deposit).

Equipment:

- 6—6-ft. rectangular tables (seats 6 each)
- 18 chairs

Amenities:

- Fireplace
- Basketball court
- Restroom
- Two (2) Outdoor Picnic Tables
- Playground
- Tennis courts
- Small sports field



Mt Baker Rowing & Sailing Center

3800 Lake Washington Blvd S, Seattle, WA 98118

Large Meeting Room

Located in Stan Sayres Park, home of Seattle's famous hydroplane races, this beautiful, spacious second-floor main room features two decks and offers sweeping views of Mount Baker, Lake Washington, and the Cascade Mountains. Filled with light and finished with natural wood, the room creates a warm setting for special events.

Available Hours: 6 AM to 9:30 PM

Capacity: Table Seating - 90 | Standing - 120

Fees:

- \$250 OR \$500 - Refundable damage deposit without alcohol / with alcohol
- \$230 / hour - Main Room (Fri-Sun, 5-hour minimum)
- \$150/hour - Main Room (Mon-Thurs or Fri-Sun before 2PM, 3-hour minimum)
- \$39 / hour - Per staff fee + one additional hour; fees vary according to event types and hours
- \$39 - Non-refundable booking fee
- \$150 - Maintenance fee
- \$78 - Alcohol fee (if applicable)

*The minimum rental fee for this facility is \$1,045 (includes refundable damage deposit).

Equipment:

- 12 round tables (seats 4-6 each)
- 8 rectangular tables (seats 6 each)
- 100 chairs



Amenities:

- | | | | |
|----------------|---------------|----------------------|-------------|
| • Refrigerator | • Scenic view | • A/V | • Ice Maker |
| • Restrooms | • Kitchen | • Electric Fireplace | • Oven |



Mt Baker Rowing & Sailing Center

3800 Lake Washington Blvd S, Seattle, WA 98118

Small Meeting Room

Located in a separate building from the Large Room, this space features an observation deck with views of Lake Washington and is ideal for wedding or event preparation, meetings, and trainings. Stair access only.

Available Hours: 6 AM to 9:30 PM

Capacity: Table Seating - 20 | Standing - 35

Fees:

- \$250 OR \$500 - Refundable damage deposit without alcohol / with alcohol
- \$20 / hour - Main Room (2-hour minimum)
- \$39 / hour - Per staff fee + one additional hour; fees vary according to event types and hours
- \$39 - Non-refundable booking fee
- \$25 - Maintenance fee
- \$78 - Alcohol fee (if applicable)

*The minimum rental fee for this facility is \$471 (includes refundable damage deposit).

Equipment:

- 20 chairs
- 5 rectangular tables

Amenities:

- Scenic view
- TV



Pinehurst Shelterhouse

12029 14th Ave NE, Seattle, WA 98125

Located in the quiet neighborhood of Pinehurst, light streams into this space that opens to a wonderful community park. A great space for your next family gathering, neighborhood meeting, or birthday party.

Available Hours: 6 AM to 11 PM

Capacity: Table Seating - 30 | Standing - 53

Fees:

- \$250 OR \$500 - Refundable damage deposit without alcohol / with alcohol
- \$45 / hour - Main Room (2-hour minimum)
- \$39 / hour - Per staff fee + one additional hour; fees vary according to event types and hours
- \$39 - Non-refundable booking fee
- \$25 - Maintenance fee
- \$78 - Alcohol fee (if applicable)

*The minimum rental fee for this facility is \$521 (includes refundable damage deposit).

Equipment:

- 6 round tables (seats 4-6 each)
- 50 chairs

Amenities:

- | | | |
|--------------------|-------------|--------------|
| • Refrigerator | • Microwave | • Ballfield |
| • Indoor Restrooms | • Sink | • Playground |
| • Basketball court | | |



Pritchard Beach Bathhouse

8400 55th Ave S, Seattle, WA 98118

Tucked away in the Rainier Valley, this 1,645 square foot space sits on the shores of Lake Washington and is connected to a 19-acre natural wetland. The park features beautiful waterfront views and a popular swimming beach, which is lifeguarded between late June and late August.

Available Hours: 6 AM to 11 PM

Capacity: Table Seating - 70 | Standing - 90

Fees:

- \$250 OR \$500 - Refundable damage deposit without alcohol / with alcohol
- \$50 / hour - Main Room (2-hour minimum)
- \$39 / hour - Per staff fee + one additional hour; fees vary according to event types and hours
- \$39 - Non-refundable booking fee
- \$75 - Maintenance fee
- \$78 - Alcohol fee (if applicable)

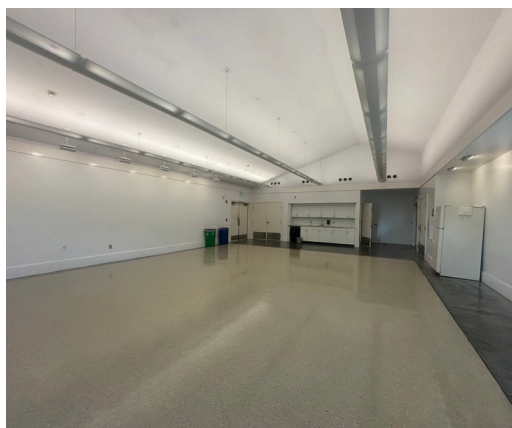
*The minimum rental fee for this facility is \$581 (includes refundable damage deposit).

Equipment:

- 9—6-ft. rectangular tables (seats 4-6 each)
- 90 chairs

Amenities:

- Refrigerator
- Restrooms (shared during the summer)
- Sink
- Scenic view



Ross Shelterhouse

4320 4th Ave NW, Seattle, WA 98107

This large indoor/outdoor covered space opens up to a playground and open grass field through a large roll up door, perfect for connecting indoors with outdoors, while providing protection from the elements. Great for birthday parties, summer picnics, community meetings, classes, or other events.

Available Hours: 6 AM to 11 PM

Capacity: Table Seating - 30 | Standing - 35

Fees:

- \$250 OR \$500 - Refundable damage deposit without alcohol / with alcohol
- \$42 / hour - Main Room (2-hour minimum)
- \$39 / hour - Per staff fee + one additional hour; fees vary according to event types and hours
- \$39 - Non-refundable booking fee
- \$25 - Maintenance fee
- \$78 - Alcohol fee (if applicable)

*The minimum rental fee for this facility is \$515 (includes refundable damage deposit).

Equipment:

- 7 rectangular tables (seats 4-6 each)
- 45 chairs

Amenities:

- Refrigerator
- Sink
- Nearby Ballfield
- Restrooms*
- Playground

*Restrooms are closed October through April. Check [Restroom Status](#).



Ward Springs Pump House

4th Ave N & Ward St, Seattle, WA 98109

Available May - September only

Located on the Southeast slope of Queen Anne Hill, enter this classic retrofitted city pump house through original barn doors into a cozy space just steps from a newly renovated playground. Minutes from downtown, it features a panoramic view of the city and is a wonderful space for birthday parties, meetings, and retreats.

Available Hours: 6 AM to 11 PM

Capacity: Table Seating - 20 | Standing - 40

Fees:

- \$250 OR \$500 - Refundable damage deposit without alcohol / with alcohol
- \$20 / hour - Main Room (2-hour minimum)
- \$39 / hour - Per staff fee + one additional hour; fees vary according to event types and hours
- \$39 - Non-refundable booking fee
- \$25 - Maintenance fee
- \$78 - Alcohol fee (if applicable)

*The minimum rental fee for this facility is \$471 (includes refundable damage deposit).

Equipment:

- 5 rectangular tables (seats 4-6 each)
- 30 chairs

Amenities:

- Indoor Restroom
- Playground



Warren G Magnuson - Hangar 30

6310 NE 74th Street, Building 30, Seattle, WA 98115

Hangar 30 boasts 30 ft. high ceilings (20' to structural beams), 220-volt electricity, and measures approximately 100 x 200 ft. for a total square footage of 20,000. This uniquely configurable space can expand to additional parking lots (North and South) available immediately adjacent to the Hangar. Create a larger footprint for your event by opening garage doors to allow guests to flow freely into reserved and activated parking lots.

Available Hours: 6 AM to 12:30 AM

Capacity: 1300

Fees:

- \$250 OR \$500 - Refundable damage deposit without alcohol / with alcohol
- \$307 / hour - Fri - Sun, 10-hour minimum
- \$218 / hour - Mon - Thurs, 10 hour minimum unless ending before 6PM (2-hour minimum)
- \$78 / hour - Per staff fee (2) + one additional hour; fees vary according to event types & hours
- \$39 - Non-refundable booking fee
- \$250 - Maintenance fee
- \$78 - Alcohol fee (if applicable)
- \$95 / hour - Workshop (optional additional room)
- \$42.25 / hour - Lower Conference Room
- \$307 / day - Additional parking (North and South) lots

*The minimum rental fee for this facility is \$1,034 (includes refundable damage deposit).

Equipment: 20 chairs and 2 tables are included in rental.

- 50—5ft. round tables and 50—6ft. rectangular tables
 - \$212.50 / 25 tables or \$425 / 50 tables or \$850 / 100 tables
- 500 stacking chairs
 - \$250 / 100 chairs or \$625 / 250 chairs or \$1250 / 500 chairs

Amenities:

- Sink
- Warming oven
- Freezer
- Restrooms
 - 6 Women Stalls, 4 Mens Stalls, 1 All-Gender
- Water fountains

Notes:

- There are 500 parking spaces near the Hangar and 2600 in Magnuson Park. All first come, first serve.
- Groups over 250 people require additional dumpsters through private service.
- Insurance is required for this venue.



Warren G Magnuson - Officers Club

7448 63rd Ave NE, Seattle, WA 98115

Surrounded by evergreens, this space opens into a large, wood-floored main room with a gas fireplace and dimmable lighting, then flows into a smaller Art Deco-style lounge with a vintage themed bar. This space also includes a caterer's kitchen with a warming oven and freezer, making it an ideal location for events with mixed ages or multiple groups.

Available Hours: 8 AM to 12 AM

Capacity: Table Seating - 80 | Standing - 142

Fees:

- \$250 OR \$500 - Refundable damage deposit without alcohol / with alcohol
- \$106 / hour - Main Room (4-hour minimum)
- \$39 / hour - Per staff fee + one additional hour; fees vary according to event types and hours
- \$39 - Non-refundable booking fee
- \$75 - Maintenance fee
- \$78 - Alcohol fee (if applicable)

*The minimum rental fee for this facility is \$983 (includes refundable damage deposit).

Equipment:

- 8—5-ft. round tables (seats 4-6 each)
- 6—6-ft. banquet tables (seats 4-6 each)
- 80 chairs

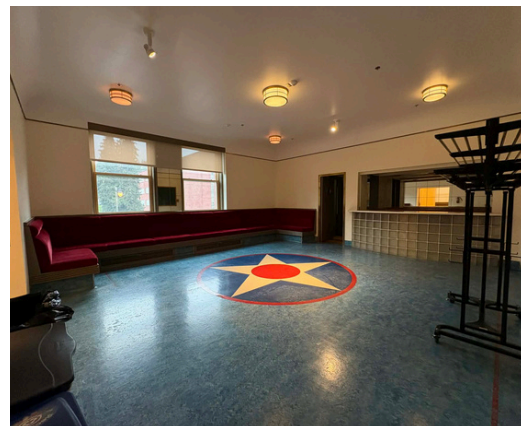
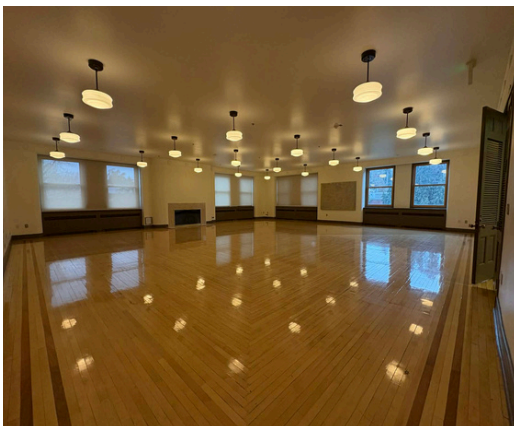


Amenities:

- ADA Restrooms
- Refrigerator

Notes:

- There are 500 parking spaces near the Hangar and 2600 in Magnuson Park. All spaces are first come, first serve.
- There are stairs and elevator access to this 3rd floor space.



Reservation Process

Indoor facilities cannot be reserved through the online calendar.

Complete and submit an Indoor Facility Use Application.

Do not send payment or documentation with your application.

Applications must be received at least 30 days in advance of the event. A \$75 late fee applies on applications received 14-29 days prior to the event date.

Tours — We encourage you to visit the site to make sure it works for your event. See the tour schedule on page 2. Tours do not occur on holidays and may be cancelled or rescheduled occasionally for other reasons. Check the indoor rentals website for cancellations or contact the Event Scheduling Office through email if you are unsure: SPRevents@seattle.gov

Application Process —

1. Lottery applications are accepted as early as the first business day of the month, one year in advance. Regular applications are accepted up until 30 days in advance of the event. (Application, Email or U.S. Mail)
 - a. Lottery applications are processed on the first business day of the following month, 11 months in advance by random lottery drawing. A confirmation is emailed back to you by the fifth business day of the month.
 - b. Regular applications will be processed based on first-come, first-served availability.
2. The booking fee and damage deposit payments are due within 5 business days from receiving the confirmation.
3. All required documentation and payments are due 90 days prior to the scheduled event.
 - a. For events booked less than 90 days prior to the scheduled event, all fees and documentation are due immediately.

Reservations are subject to cancellation if payment and documentation are not received by the 90-day deadline.

Changes to Your Reservation — Changes must be requested at least 30 days in advance of your rental. Depending on availability, you may be able to alter the day, time and/or location. A \$25 rescheduling fee may apply. Changes will not be made after your final permit has been issued.

Payment — Can be made online with a credit or debit card. Checks can be mailed to the Event Scheduling Office.

Permit — Your final permit will be emailed to you two (2) weeks prior to the event. Permits are not issued without payment and insurance (if applicable). You will need to read, agree and abide by the permit's terms and conditions. It is your responsibility to bring the permit on the day of your event.

Reservation Process

Cancellations —

- If any time up to 181 days prior to the scheduled event the User decides to cancel their rental, Seattle Parks & Recreation shall retain \$89 (\$39 booking fee + \$50 cancellation fee) from the damage deposit.
- If the User should cancel their rental between 180 days and 91 days prior to the scheduled date, the \$39 booking fee and \$250 of the paid damage deposit shall be retained.
- If the User cancels with 90 or fewer days notice, the \$39 booking fee and all rental fees will be retained.

To officially cancel a reservation, the primary contact on the rental application is required to submit a letter or email a notice of cancellation. Cancellation is only confirmed upon receiving this notice.

Rental Staff — Rental staff are on-site Parks facility supervisors. They are mandatory to reserve a facility. They'll open and close the building for you and assist with any issues pertaining to the building. They will also bring out and in tables and chairs for you to set-up and help facilitate clean-up. All set-up, break-down, decorations and clean-up is your responsibility.

Included in Your Reservation — Rentals include use of the reserved space, tables, chairs and restrooms at the facility. Please refer to the facility for approximate table and chair count, and amenities that may be available during your event. Restrooms at our facilities may be shared with tenants and/or other events. Rentals do not include the use of any outdoor space unless specified on the permit.

Catering — Insurance is required to have onsite catering services. A \$78 catering/special equipment fee is required for those wanting on-site catering/special equipment. We do not have a preferred vendor list. You can hire your own catering vendor. Providing your own food does not count as catering.

Alcohol — Extra documents are required to have any type of alcohol onsite. To serve any type of alcoholic beverage at an event, you'll need to pay a \$78 alcohol fee and obtain a WSLCB Permit, Class 12 Mixologist License and Insurance and submit them to the Event Scheduling Office. Events wanting to sell alcohol must submit additional documents - inquire for details.

- Alcohol is only permitted to be served and consumed within the facility. As the permit holder, it's your responsibility to monitor your guests and post signs stating "No Alcohol Beyond This Point" at all exits.

Reservation Process

Alcohol Permits (Required to serve or sell alcohol) —

- WSLCB Banquet Permits: Required for the service and consumption of liquor at a private, invitation only, gathering. <http://liq.wa.gov/licensing/banquet-permits>
- WSLCB Special Occasion License: Issued to non-profit organizations to sell alcohol on-premise for a specific date and location. <http://liq.wa.gov/licensing/special-occasion-licenses>
- MAST Training and CLASS 12 Mixologists licenses: All alcohol must be served from a MAST trained bartender who holds CLASS 12 Mixologist license. This is required by Seattle Parks and Recreation in addition to a Banquet Permit.
https://lcb.wa.gov/mast/vp/mandatory_alcohol_server_training
- Special Event Permit: Required for public events with alcohol sales.
<https://www.seattle.gov/special-events-office>

Onsite Sales — All onsite sales are subject to remit 10% of gross sales to Seattle Parks and Recreation. This includes any admission fees paid onsite and any sales of foods, beverages, alcohol, items, merchandise and services made on SPR property by the permit holder or their vendors. Completion and remittance of the 10% Gross Sales Report for your event are due within 10 days after your rental concludes.

Setup, Cleanup and Decorations — Your reservation must include enough time necessary to set up, operate, teardown and clean up your event. Setup may be permitted on the day prior depending on availability. When available, all rental and staff fees apply for the additional time. Painters tape is required for hanging items. The City of Seattle assumes NO liability for the loss or damage of property.

Parking — All parking is open to the public and can be used on a first-come, first served basis. There are two exceptions; at Alki and Golden Gardens, there is one reserved parking space next to the venue for catering vehicles, which requires approval in advance.

Fire Permits — A fire permit may be required for the use of candles, open-flame, on-site cooking, and events with atypical layout of decor.
Seattle Fire Department Permit Office: 206-386-1450, <https://www.seattle.gov/fire/business-services/permits>

Reduced Fees for Ongoing Rental Use — Series Rentals for reservations with 6 or more dates in a calendar year, may have staff fees waived. All dates must be booked at the same facility. A 2-hour minimum per day and a \$500 refundable key deposit are required. At Magnuson, staff fees apply, and room rates for Hangar 30 are reduced to \$115/hour (Mon-Thurs only).

Reservation Process

Outdoor Areas & Other Park Activities — Areas of the parks can be rented along with indoor areas. A rental of the facility does not include the outdoor space. To book outdoor spaces inquire for information. The cement walkways surrounding buildings cannot be reserved. Patios at Alki Beach Bathhouse and Dakota Place Park may be added to your reservation.

All our facilities are located in public parks and are subject, but not limited, to City improvement or public works projects, large special events, athletic use, ceremonies, concerts, parties, picnics, filming, etc.

Outdoor Events — To schedule an outdoor event, complete a Park Use Permit Application. This may be in addition or separate from an indoor rental application. Runs & walks refer to Run/Walk Guidelines. <http://www.seattle.gov/parks/reserve/park-use-permits>

Community Center Rentals — Contact each community center directly for information and reservations. <https://seattle.gov/parks/all-community-centers>

Anti-Discrimination — As a matter of policy, law, and commitment, Seattle Parks does not discriminate on the basis of race, color, sex, marital status, sexual orientation, political ideology, age, creed, religion, ancestry, national origin, or presence of any sensory, mental or physical handicap. (SMC 18.12.280) Discrimination complaints can be filed with the Seattle Parks Superintendent's Office at 100 Dexter Ave. N Seattle, WA 98109 or with the Equal Employment Opportunity Office, U.S. Department of the Interior, Washington D.C. 20240.

Access for People with Disabilities — Within the limitations of each park site, at your request, will make accommodations for people with disabilities. Please arrange this through our event scheduling staff when you schedule your ceremony. For information or complaints concerning the Americans with Disabilities Act, please call Seattle Parks at 206-684-4075.

Event Scheduling Office

Seattle Parks & Recreation 300 Elliott Ave W, Suite 100 Seattle, WA 98119

Email: SPRevents@seattle.gov

Phone: 206-684-4080 x 1



**Seattle
Parks & Recreation**