



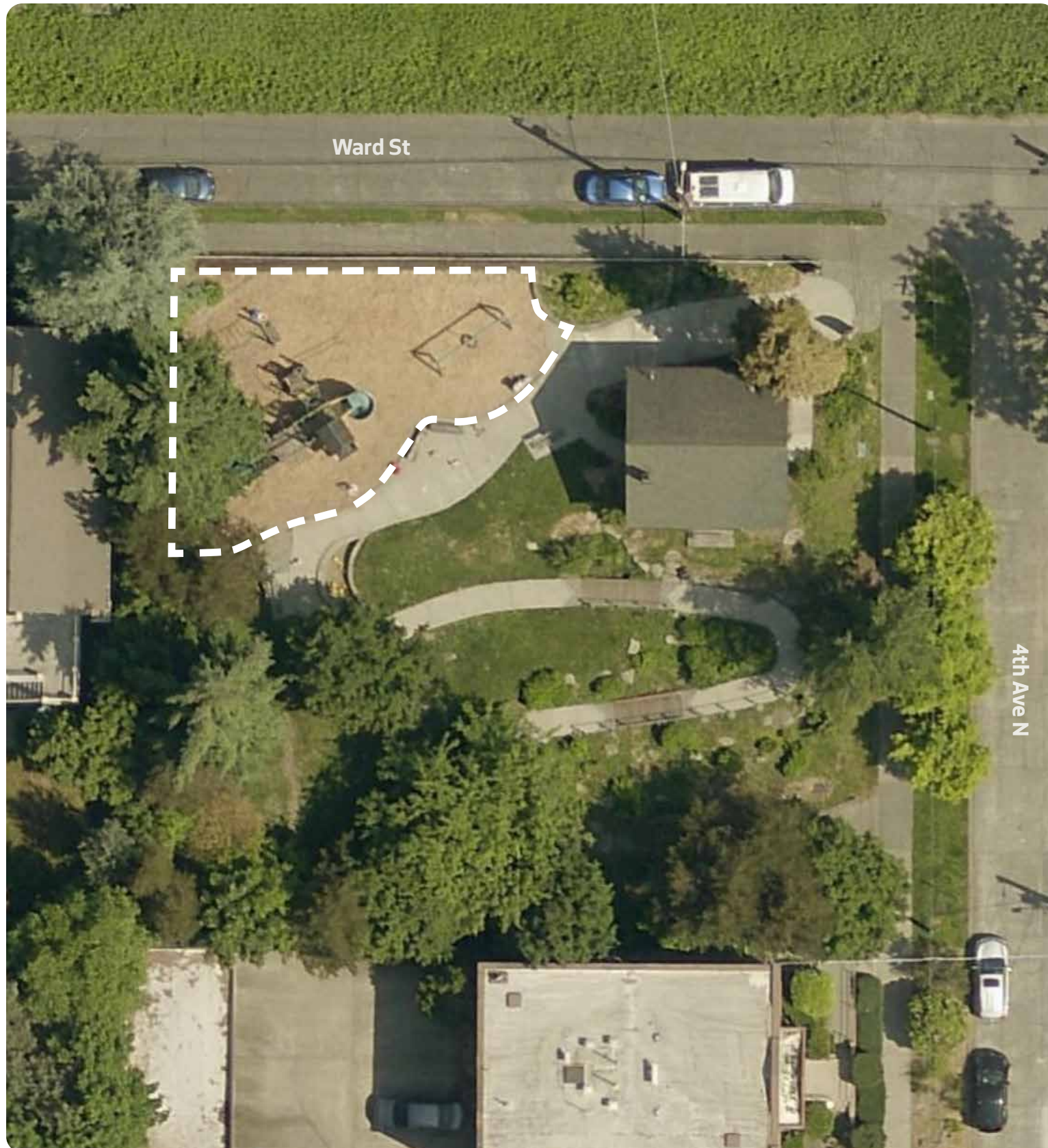
# WARD SPRINGS PARK PLAY AREA RENOVATION

Project Website: <https://www.seattle.gov/parks/about-us/projects/ward-springs-play-area-renovation>



**Seattle**  
Parks & Recreation

# Ward Springs Park | Play Area Renovation



## Scope of work:

This project will replace the existing play equipment with new equipment that meets current safety and accessibility standards. All improvements will be compliant with the standards from the Americans with Disabilities Act (ADA).

During construction the contractor will need to close the play area portion of the park. Seattle Parks and Recreation and the contractor hired for the project will work to minimize impact to the neighborhood. Thank you for your understanding as we all work towards a new play area for children of all ages and abilities!

## Budget:

Seattle Parks District Major Maintenance provides \$430,000 for planning, design, construction.

## Schedule:

**Planning:** Fall - Winter 2023/2024

**Design:** Spring - Summer 2024

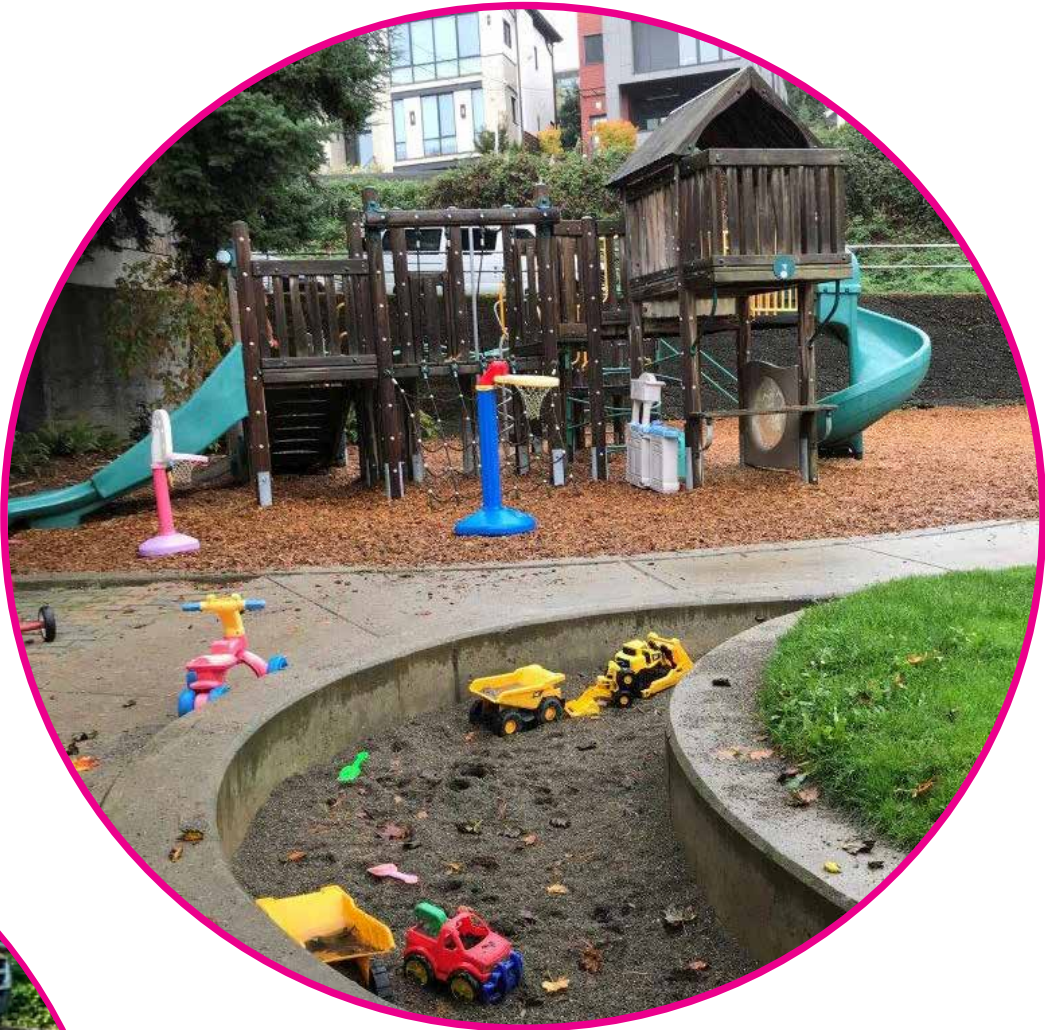
**Construction:** 2024-2025



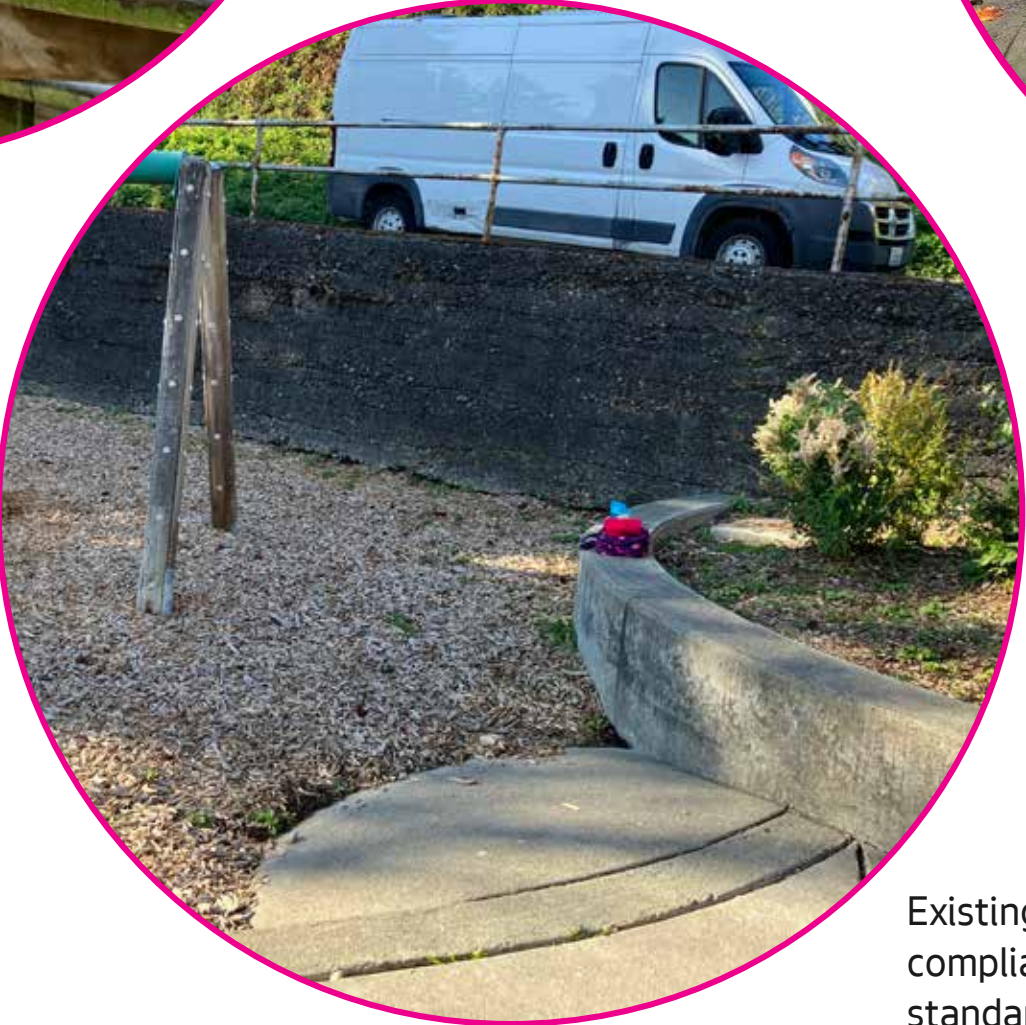
# Site Challenges



Wood structures in need of replacement



Many abandoned toys within fall zone of play equipment pose safety concerns



Existing ramp is not compliant with accessibility standards

# Site Opportunities



Park was developed through community investment and offers a beautiful garden setting for the play area



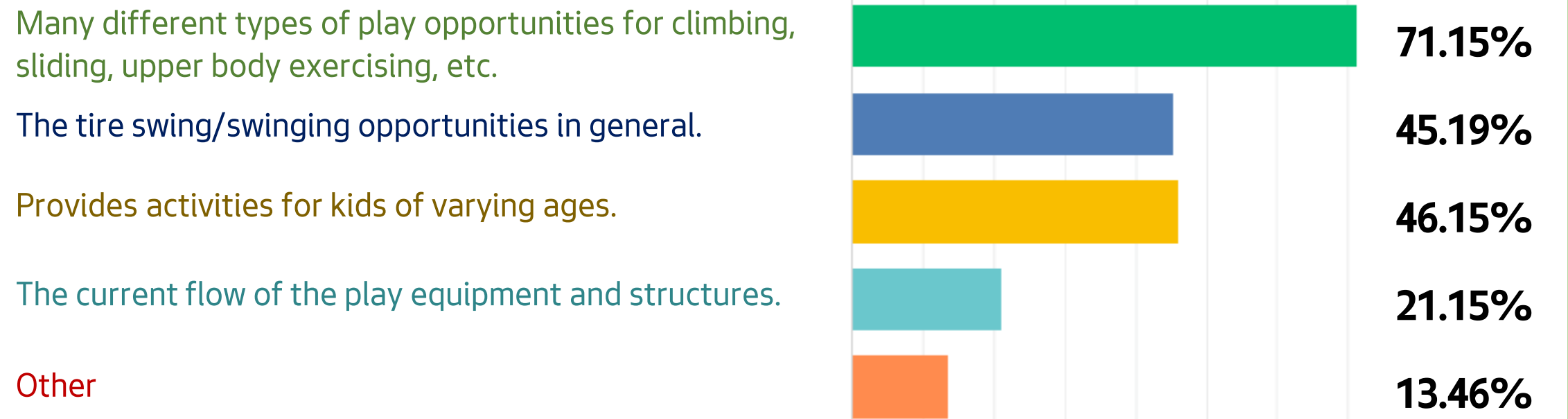
Views of the city and space needle

# What we've heard from you...



## Project Kick-Off Survey: 104 Respondents

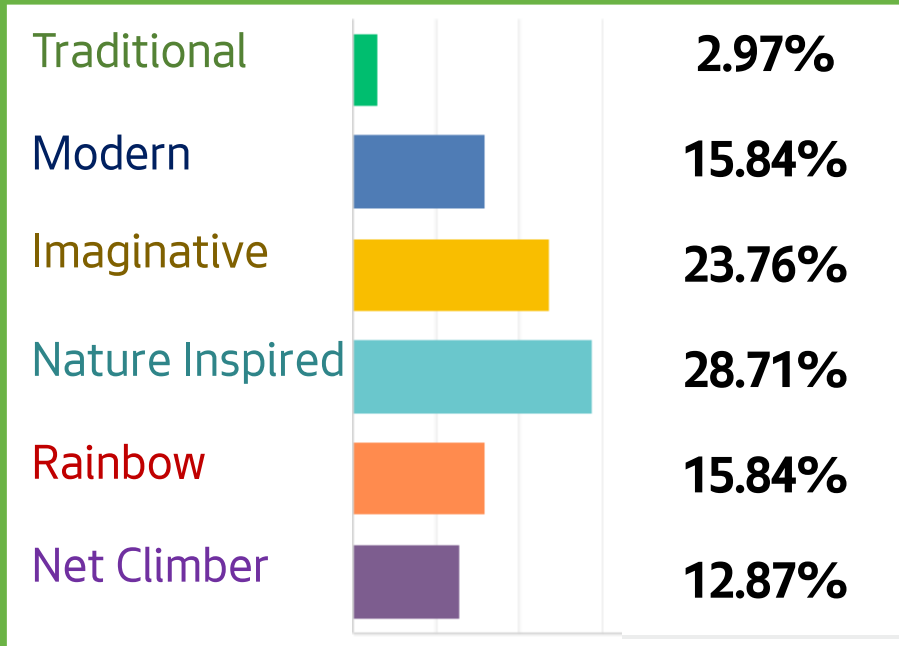
### What do you like about the existing play equipment and its arrangement? Check all that apply.



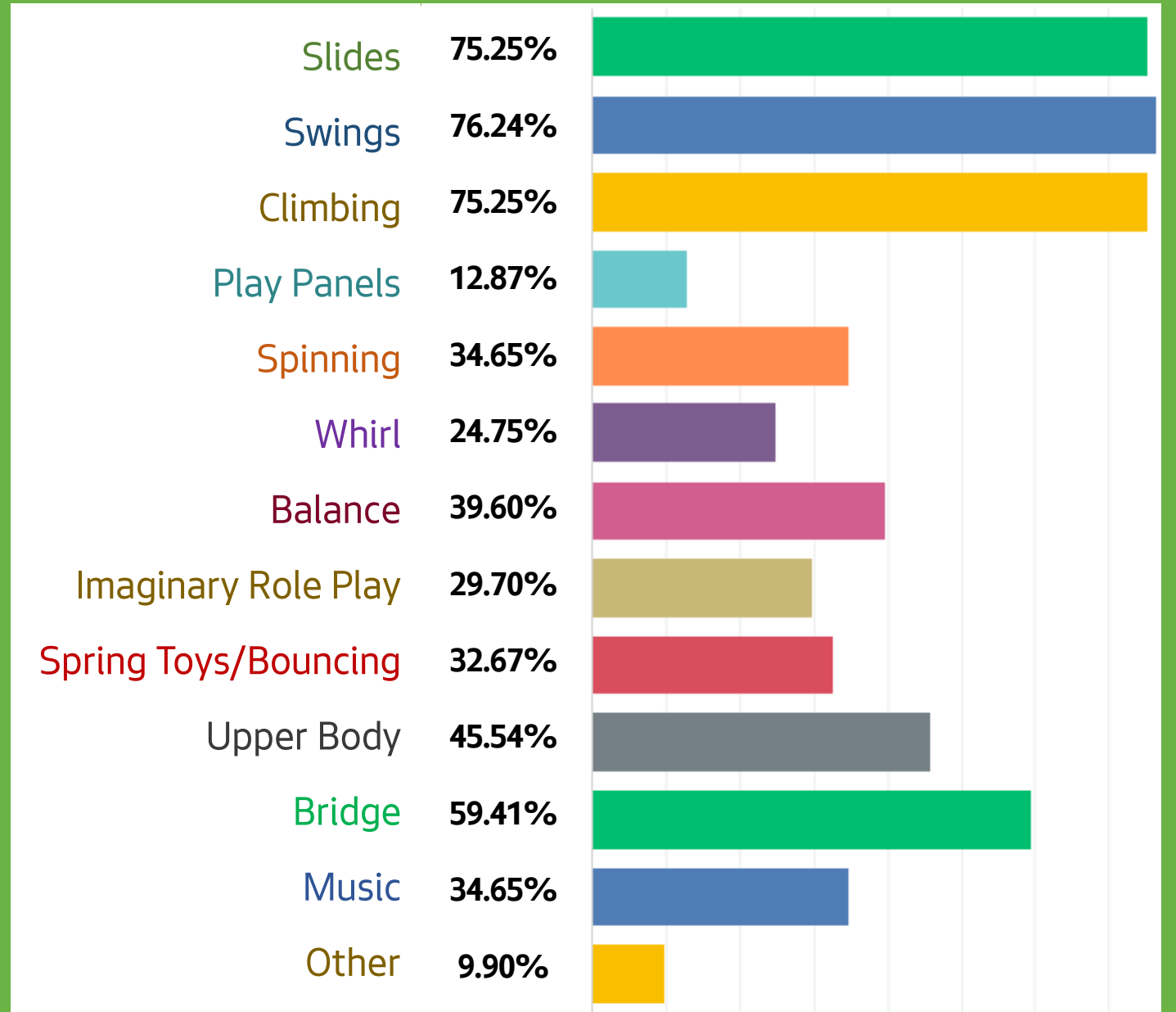
# What we've heard from you...



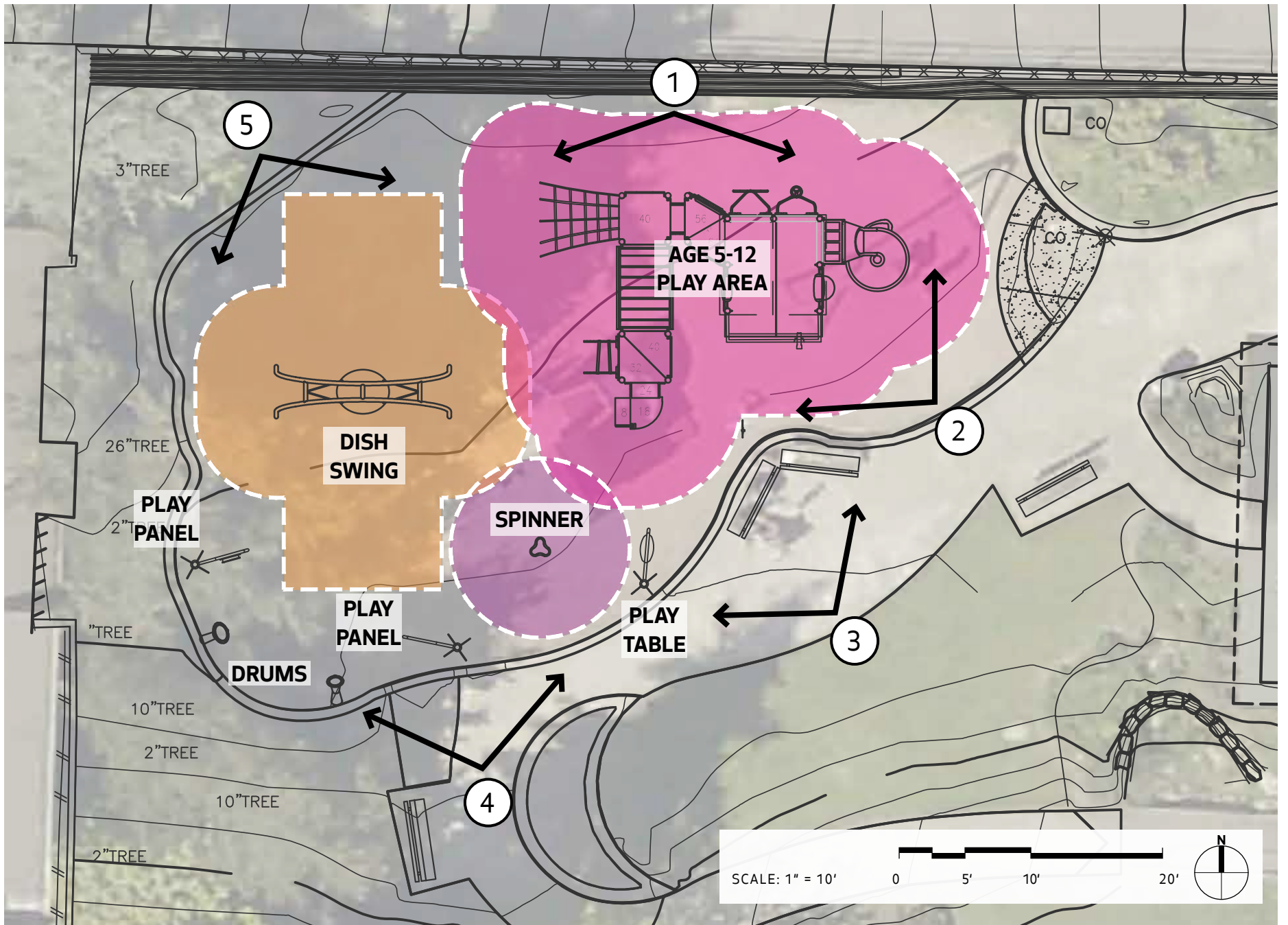
What play equipment style would you like for the play area? Please choose one.



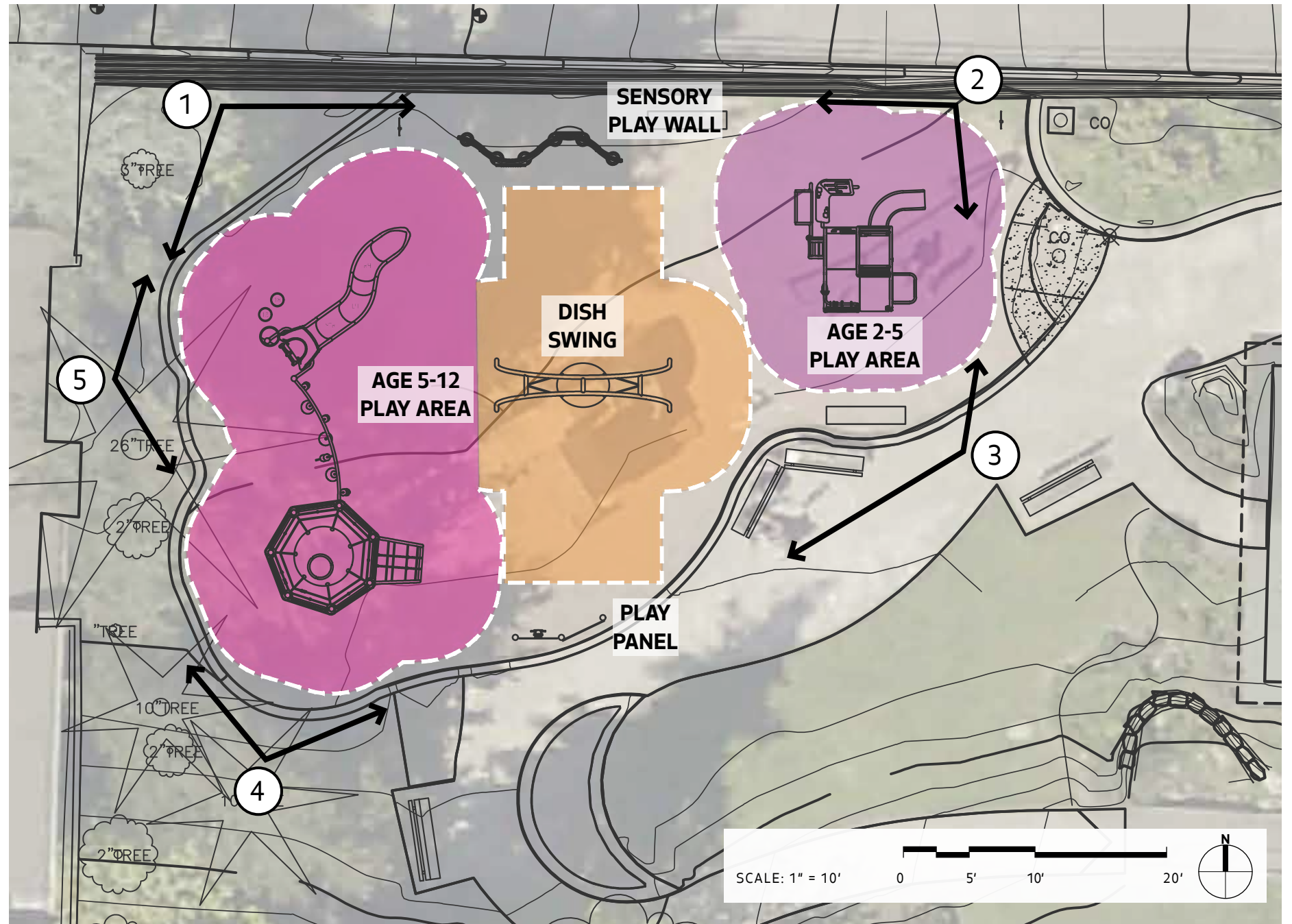
Please select your top six most desired type of play equipment.



# Option A



# Option B





# Option C

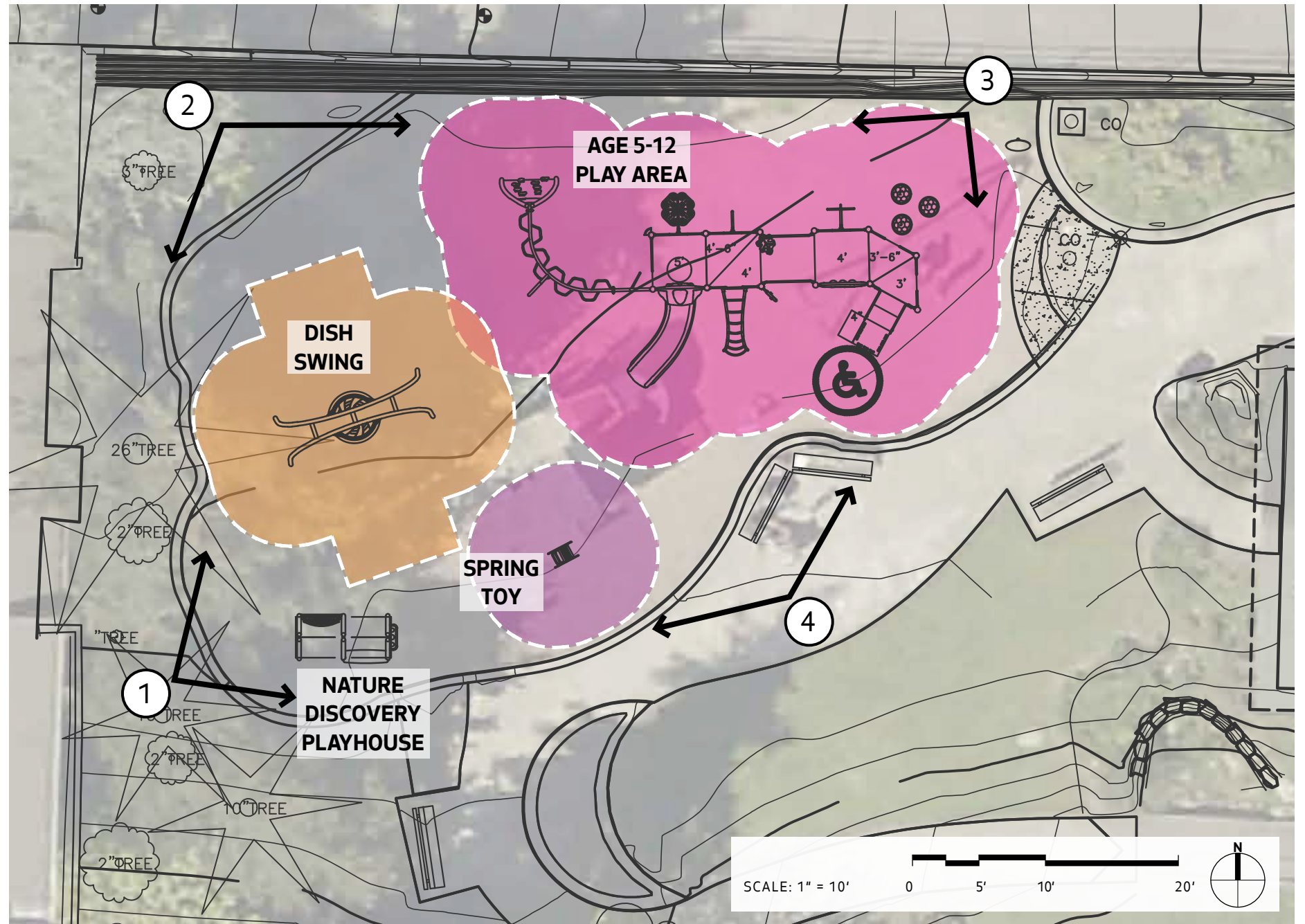
1



2



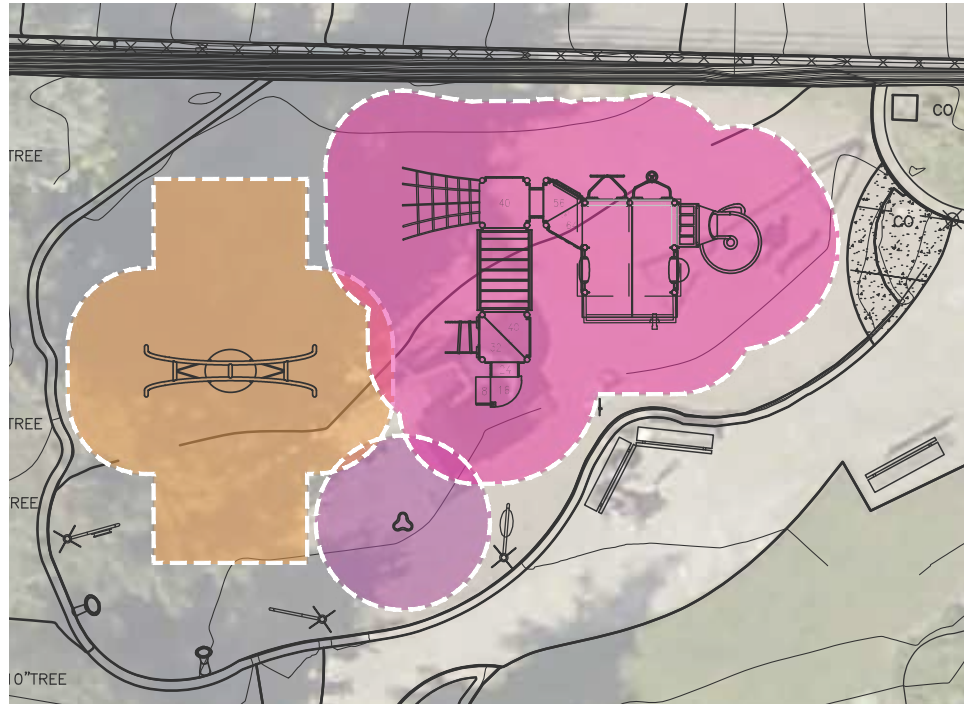
3



4



# Concept Plan Options



**OPTION A**

- Age 2-5 play equipment:
  - Saddle spinner
  - Play panels and imagination table
  - Drums
- Age 5-12 play equipment:
  - Rock climbing wall
  - Winding slide
  - Clatter bridge
- Proposed swing:
  - 1 dish swing



**OPTION B**

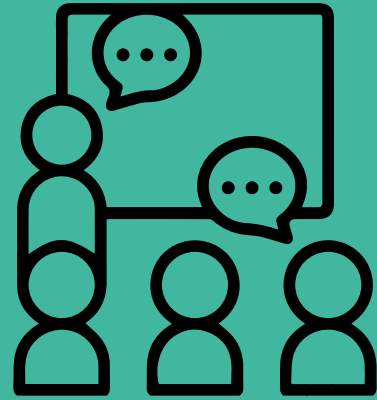
- Age 2-5 play equipment:
  - Smart Play Cube with 14 developmentally-appropriate activities
  - Sensory play wall
- Age 5-12 play equipment:
  - A large net-climbing structure
  - A slide
  - Swiggle stix balancing bridge
- Proposed swing:
  - 1 dish swing



**OPTION C**

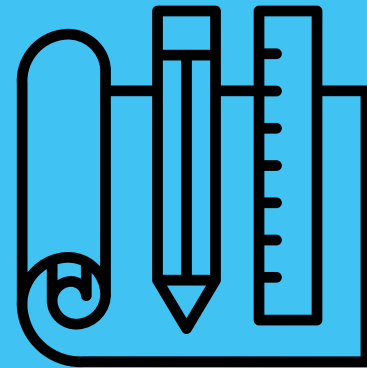
- Age 2-5 play equipment:
  - Nature discovery playhouse
  - Spring toy
- Age 5-12 play equipment:
  - Rock climbing wall
  - Slide
  - Monkey bars
- Proposed swing:
  - 1 dish swing

## Next Steps...



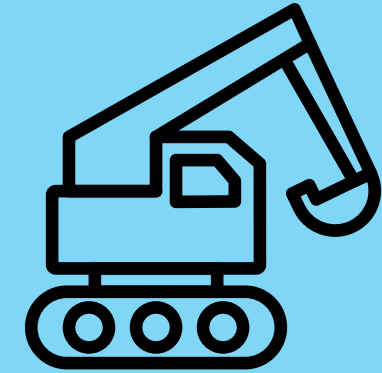
A short presentation and online survey will be posted to the project website on **Monday, February 5th**, where you can provide input on these preliminary designs.

**Saturday, February 24th** from **noon to 2 pm** we will be hosting a public meeting at the Ward Springs Pump House (adjacent to the play area). At this meeting, we will share some preliminary design ideas, and will listen to your feedback.



The online survey will be open for three weeks and will close on **Monday, March 4th**.

We will use this input to prepare a concept plan, which will be shared with the community at another public meeting in the spring. We will gather additional input during this meeting and then start drawing construction documents in the spring!



After the plans are completed in 2024, the play area will be built in late 2024 or early 2025.

The play area will be closed during construction (we anticipate this to be about a 3-month period).

**We'd like to hear from you! Please fill out the survey on our project page:**

<https://seattle.surveymonkey.com/r/WardSpringsDesignOptions>

