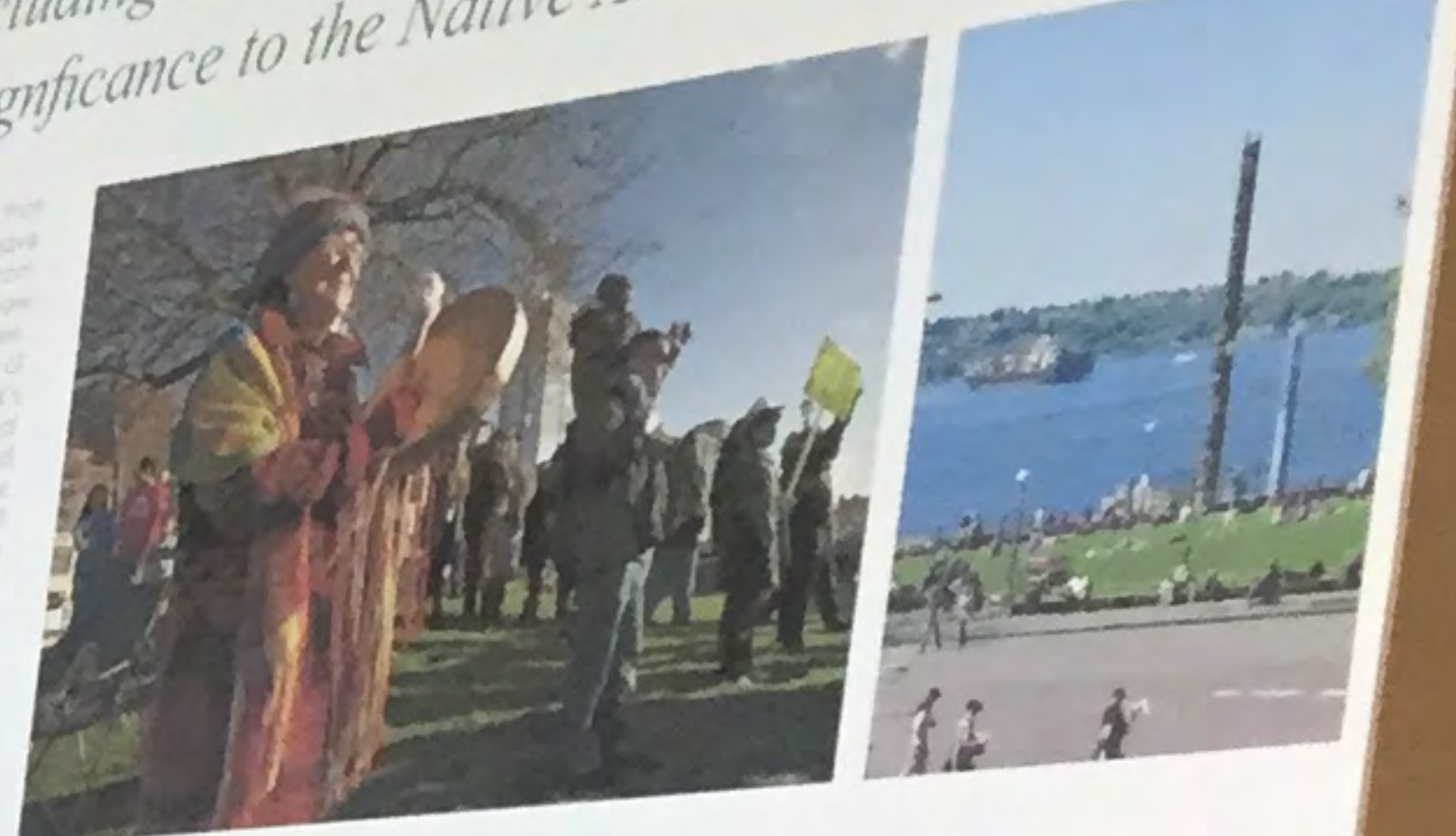


NATIVE AMERICAN CULTURE AT VICTOR STEINBRUECK PARK

Many people, including some Native Americans, say that the park has special significance to the Native American community.

Through the research process, we have learned that many people, including some Native Americans, say that the park has special significance to the Native American community. The research was conducted through a series of focus groups and interviews with community members. The research was conducted in the park and in the community. The research was conducted in the park and in the community. The research was conducted in the park and in the community.



1 Should the project do more to recognize Native American Culture?
Mark one: "yes" or "no"

Handwritten notes: "via the park", "SPD has a history of recognizing Native American culture in the park", "No SPD in the park".

yes	no
<input checked="" type="radio"/>	<input type="radio"/>

2 Should a part of the park be designed for Native American gatherings?
Mark one: "yes" or "no"

yes	no
<input checked="" type="radio"/>	<input type="radio"/>

VICTOR STEINBRUECK PARK

WALKER MACY

Public Open House 1

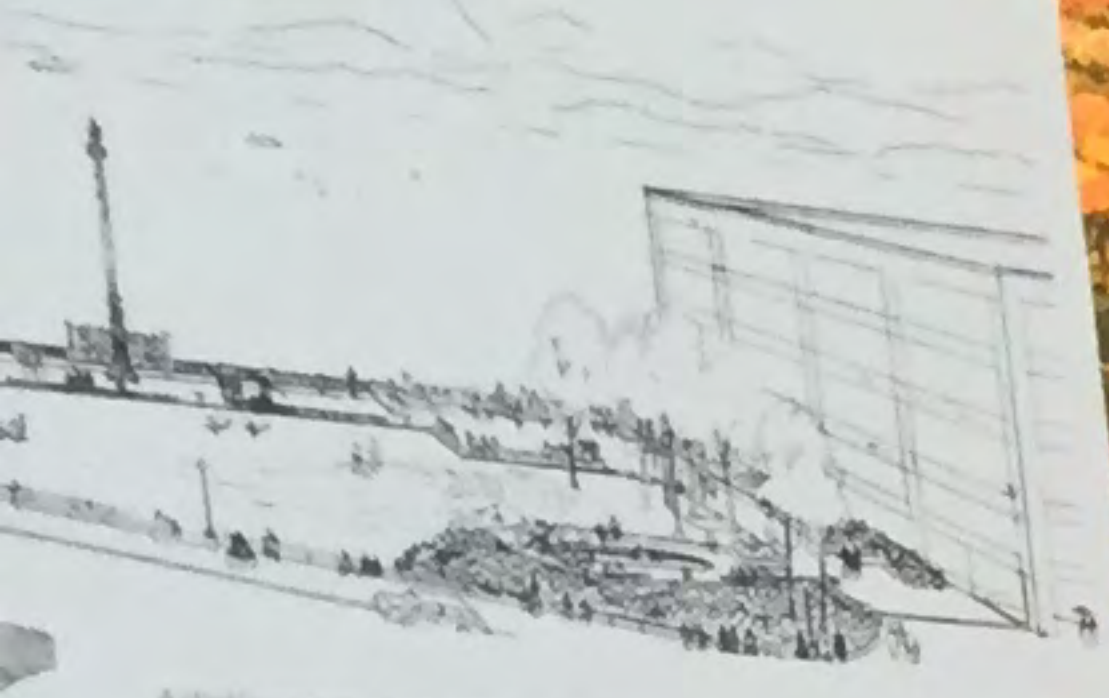
PLAY

IZING & EATING

A group of people, including a man in a dark suit and a woman with white hair, are gathered around a table, looking at a display. The man in the suit is gesturing with his hands as if explaining something. The woman is looking at the display with interest. There are other people in the background, some looking at other displays. The setting appears to be an indoor public space, possibly a museum or a community center, with a polished floor and modern lighting.

SIGN

ely public space
mountains.



Artist's rendering of the original design.

LEGEND

- A** Park paths were laid out to lead visitors out to the "belvedere" and the view over the water.
- B** The mounded lawns shelter the park from the street and create informal green gathering space with a fantastic view.
- Three "outdoor rooms" were created as small gathering areas set slightly apart from the rest of the park.
- C** The pergola and picnic area in the southwest corner.
- D** The picnic area in the northwest corner.
- E** The children's play area, which is now the site of the Tree of Life sculpture and gathering space.

D Picnic Area



E Tree of Life Sculpture



1983
WALKER MACY

CK PARK



PLAY

The park's original play area was removed. Today, the surrounding neighborhood has more families and kids—and no place to play.

ZING & EATING

To provide better places for people to relax in the park.





Arts on the Water

Pioneer Square

Man Dock

Historic Parks

POLICE



SOCIALIZING & EATING

The renovation is an opportunity to provide better places for people to converse, eat, and relax in the park.

View of Overlook Walk Park is completely unobstructed, especially full of great groups of friends and family who come to sit and enjoy the view together. Because the panoramic view is the main reason people observe being in park, the original design provided several ways for social groups to sit and relax with an emphasis on fixed along tables and stools for four to six people.

Many of the original furnishings have fallen into disrepair and are not as comfortable as they could be. The existing and future do not easily accommodate people with mobility challenges. The renovation is an opportunity to consider how ways to encourage people to socialize and dine outdoors. Additional types of furnishings could be added throughout the park or improvements could be added to a single area.



1 Should there be additional furnishings for...
Mark one "yes" or "no"
yes
no



...ENT FOR ALL

Union

SAFETY

Examine about the workers and public in the park.

Should the design team consider new locations for the project, such as the original site?

What features would be most important to the project's success?

PHOTO: COURTESY OF THE CITY OF SEATTLE

PRIORITIES

This project aims to improve the park for everyone while preserving the integrity and historic character of the original design.

Should the design team consider new locations for the project, such as the original site?

What features would be most important to the park's legacy and future success?

PHOTO: COURTESY OF THE CITY OF SEATTLE

The opportunity for

Getting to and from Seattle's waterfront has always been a challenge.

Raising the r...

The beginning...

A deep seaf...

Reconnecting to the water

Woman in dark jacket and glasses talking to a woman in a yellow sweater.

Woman in a yellow sweater looking at a display.

Woman in a striped shirt and red skirt standing near a table.

Large curved table with a grid map, a wooden model of a path, and various informational brochures.

Small table with water bottles and a sign that says "WELCOME TO THE SEATTLE WATERFRONT".

Wooden counter with a circular logo on the side.

Large table in the foreground covered with various brochures and informational materials, including one titled "SEATTLE" and another "UP AND STATE".

Conclusion

As Friends of the Waterfront, the City of Seattle and thousands of community members, we have made a waterfront for all.

CONNECTIVITY

The park is an extension of the Market, along a new pedestrian route connecting downtown to the waterfront.



VICTOR STEINBRUECK PARK WALKER MACY

CONNECTIVITY

The renovation offers a new way to connect Victor Steinbrueck Park to downtown Seattle along a new pedestrian route.

Should the renovation connect Victor Steinbrueck Park to downtown Seattle along a new pedestrian route?

1

MarketFront?

WALKER MACY

