

PROJECT ADDRESS

LONGFELLOW CR., GREG DAVIS PARK
5200 35TH AVE SW
SEATTLE, WA 98126

LEGAL DESCRIPTION

PARCEL 242403-9007
NW 1/4 LESS POR PLTD LESS ST & LESS
POR CONV PURSUANT TO AGREED
JUDGEMENT UNDER KING COUNTY S.C.C
NO 03-2-35533-0 SEA AND REC NO
20050401000954

PROJECT SITE LOCATION

CITY OF SEATTLE – NOT TO SCALE

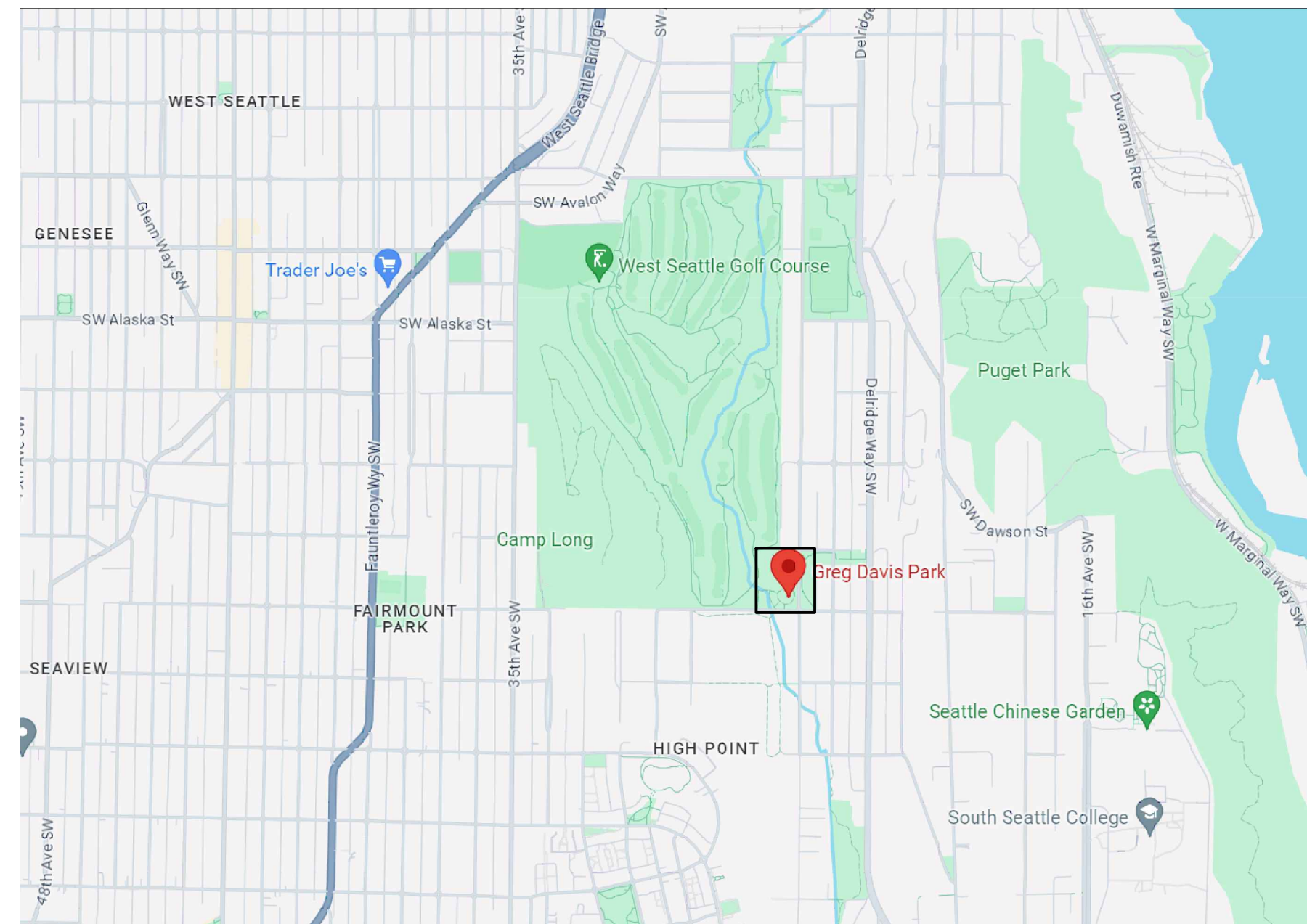
GREG DAVIS NATURAL AREA LONGFELLOW CREEK TRUSS BRIDGE

PW # #####-### PROJECT # PRKPRK730300-216
FUNDING SOURCE: SEATTLE PARKS DISTRICT/OTHER FUNDING SOURCE

OWNER:
CITY OF SEATTLE DEPARTMENT OF FACILITIES & ADMINISTRATIVE SERVICES,
PURCHASING & CONTRACTING

ADMINISTERING DEPARTMENT:
CITY OF SEATTLE DEPARTMENT OF PARKS AND RECREATION
PLANNING & CAPITAL DEVELOPMENT BRANCH
300 ELLIOTT AVENUE WEST, SUITE 100, SEATTLE, WA 98119

PROJECT DESIGN TEAM:
CITY OF SEATTLE DEPARTMENT OF PARKS AND RECREATION
PLANNING & CAPITAL DEVELOPMENT BRANCH
300 ELLIOTT AVENUE WEST, SUITE 100, SEATTLE, WA 98119
PRIMARY CONTACT: EDUARDO ABAN 206-733-9104



VICINITY MAP
NOT TO SCALE

GENERAL NOTES

- ALL WORK SHALL CONFORM TO THE 2020 OR THE LATEST EDITION OF THE CITY OF SEATTLE STANDARD SPECIFICATIONS AND PLANS FOR ROAD, BRIDGE AND MUNICIPAL CONSTRUCTION AND ALL APPLICABLE CODES AND REGULATIONS.
- A COPY OF THE APPROVED CONTRACT DOCUMENTS SHALL BE ON SITE WHENEVER CONSTRUCTION IS IN PROGRESS.
- ALL UTILITIES SHOWN HAVE BEEN ESTABLISHED BY FIELD OBSERVATION OR AVAILABLE RECORDS AND SHOULD BE CONSIDERED APPROXIMATE ONLY AND NOT NECESSARILY COMPLETE. IT IS THE SOLE RESPONSIBILITY OF THE CONTRACTOR TO INDEPENDENTLY VERIFY THE ACCURACY OF ALL UTILITY LOCATIONS SHOWN AND TO FURTHER DISCOVER AND AVOID ANY OTHER UTILITIES NOT SHOWN ON THE PLAN WHICH MAY BE AFFECTED BY CONSTRUCTION.
- THE CONTRACTOR SHALL PROVIDE AND MAINTAIN SEDIMENTATION CONTROL AND COLLECTION FACILITIES TO PREVENT ERODED SOILS FROM ENTERING THE PUBLIC DRAINAGE SYSTEM DURING EXECUTION OF THE CONTRACT.
- KEEP ALL WALKWAYS CLEAR AND FREE OF DEBRIS. PAVED SURFACES THAT ARE DAMAGED DURING CONSTRUCTION SHALL BE REPAIRED TO THE SATISFACTION OF THE ENGINEER.
- STORAGE OF MATERIALS AND EQUIPMENT WILL BE ALLOWED ONLY IN AREAS DESIGNATED FOR CONSTRUCTION OR STAGING. STAGING AND STORAGE AREAS TO BE VERIFIED WITH ENGINEER PRIOR TO START OF WORK.
- ALL FACILITIES SCHEDULED TO REMAIN THAT ARE DAMAGED DURING THE COURSE OF EXECUTION OF THE WORK SHALL BE REPLACED BY THE CONTRACTOR TO THE ENGINEERS SPECIFICATIONS. THESE FACILITIES MAY INCLUDE ASPHALT AND CONCRETE PAVING, BENCHES, RAILINGS, IRRIGATION, VEGETATION, FENCING, BUILDING AND VARIOUS UTILITIES.

SHEET INDEX

NO	SHT ID	SHEET TITLE
1	G0.01	COVER SHEET
2	S2.01	SITE PLAN
3	S2.02	TRUCK & DECK ASSEMBLY
4	S2.03	SECTIONS & DETAILS
5	S2.04	MEMBER DETAILS
6	S2.05	MEMBER DETAILS

APPROVED FOR ADVERTISING:
FAS Purchasing and Contracting Director

Seattle, Washington _____ 20____

Signature: _____
FAS Purchasing and Contracting Director

NO.	REVISION - AS BUILT	DATE
3		
2		
1		

REVIEWED: _____
PARK ENGINEER DATE

All work done in accordance with the City of Seattle Standard Plans and Specifications in effect on the date shown above, and supplemented by Special Provisions.

SEATTLE PARKS AND RECREATION
Engineering + Design Services
300 ELLIOTT AVE. W., SUITE 100
SEATTLE, WA 98119

8/21/2024

Seattle Parks & Recreation

GREG DAVIS NATURAL AREA

LONGFELLOW CREEK TRUSS BRIDGE

COVER SHEET

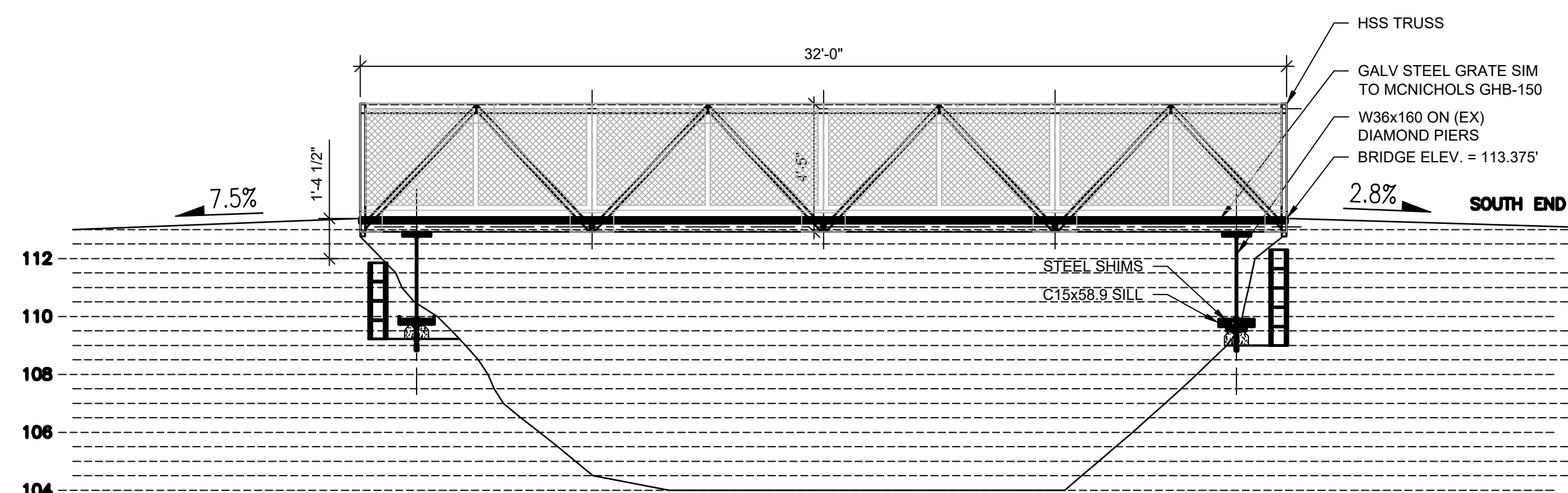
DESIGNED EA	DATE 8/21/2024
DRAWN AUTOSCAN, INC.	
CHECKED EA	SHEET 01 OF 06
ORDINANCE NO. _____	G0.01
SCALE _____	

<<<CAUTION>>>
CALL 811 BEFORE YOU DIG!
WWW.CALL811.COM

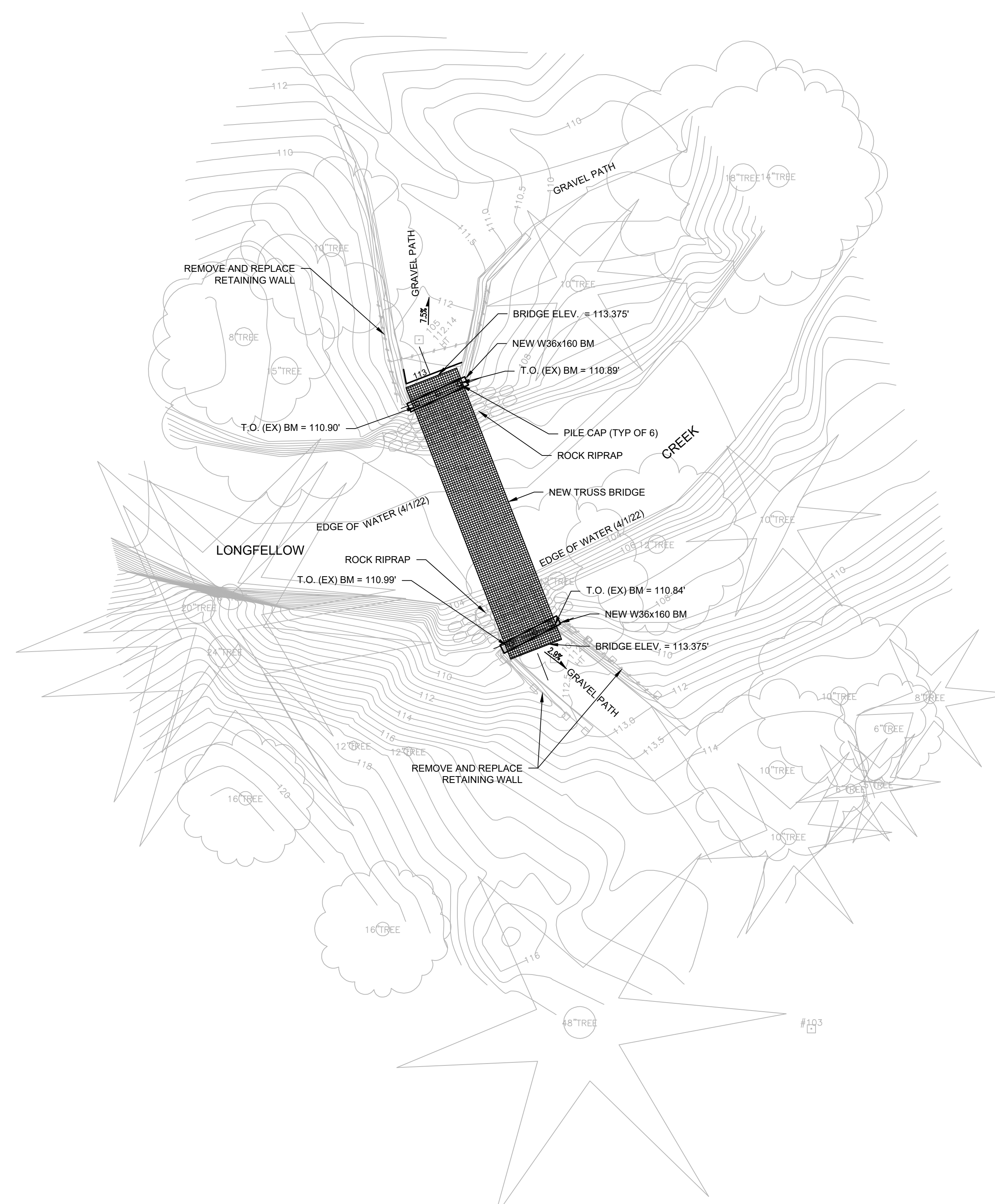
ALSO, VERIFY ALL UNDERGROUND UTILITIES NOT LOCATED BY THE 811 SERVICE BY USING A COMMERCIAL LOCATION SERVICE AND CALL SPR INSPECTION REQUEST LINE (206) 684-7034.

>>>>CAUTION - CALL 811<<<<
 UTILITY NOTIFICATION CENTER
 BEFORE YOU DIG!
 WWW.CALL811.COM

Also, verify all underground utilities not located by the 811 service by using a commercial location service and call SPR Inspection Request Line (206) 684-7034.

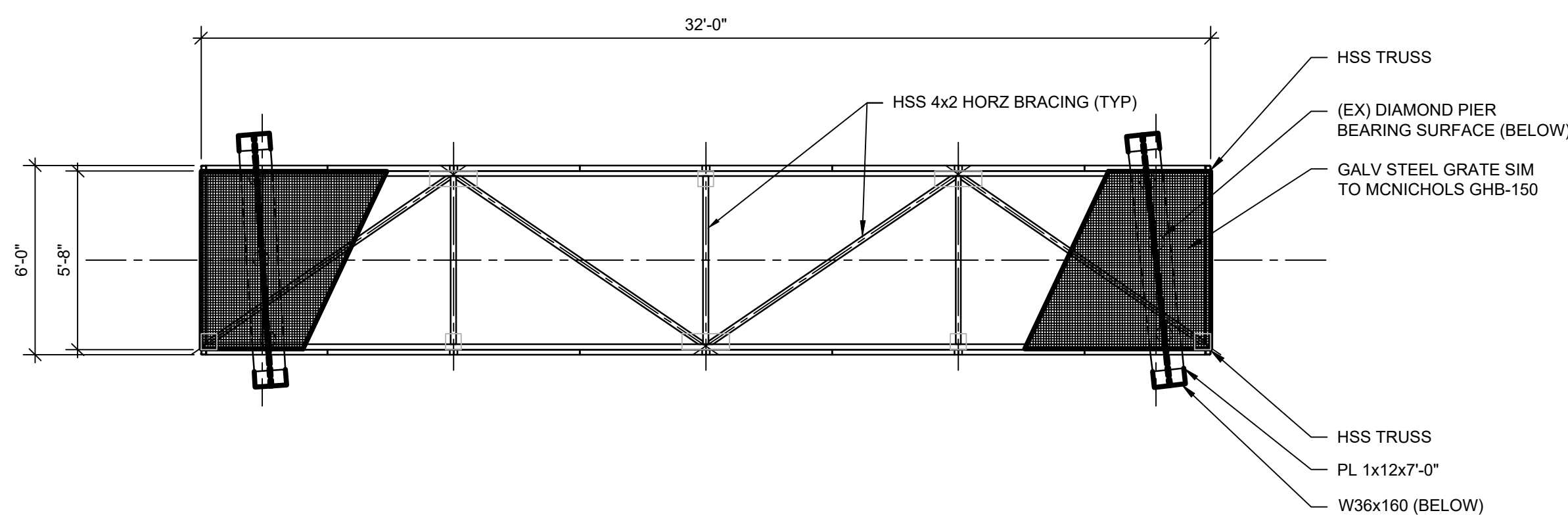


BRIDGE ELEVATION
 SCALE: 1/4" = 1'-0"



SITE PLAN
 SCALE: 1/8" = 1'-0"

2
 S2.01



BRIDGE PLAN
 SCALE: 1/4" = 1'-0"

1
 S2.01

APPROVED FOR ADVERTISING:
 Liz Alzeer
 Purchasing & Contracting

Seattle, Washington _____ Date _____ 20____

Signature: _____
 Director, Purchasing & Contracting

3		
2		
1	REVISION BY GB - DETAILS ADDITION	1/25/2024
NO.	REVISION - AS BUILT	DATE

REVIEWED: _____ DATE _____
 PARK ENGINEER

All work done in accordance with the City of Seattle Standard Plans and Specifications in effect on the date shown above, and supplemented by Special Provisions.

AUTOSCAN, INC
 4040 23RD AVE WEST,
 SEATTLE, WA 98199



8/21/2024

Seattle Parks & Recreation

GREG DAVIS NATURAL AREA

LONGFELLOW CREEK
 TRUSS BRIDGE

SITE PLAN

DESIGNED EA	DATE 8/21/2024
DRAWN AUTOSCAN, INC	SHEET 02 of 06
CHECKED EA	

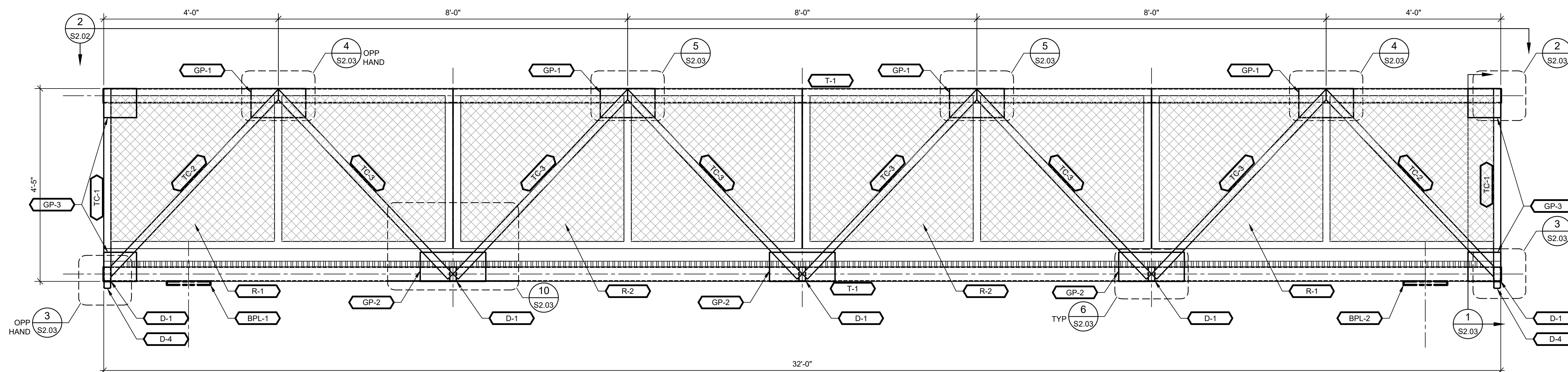
ORDINANCE NO. _____
 SPECIFICATION NO. _____

SCALE _____

NOT FOR CONSTRUCTION

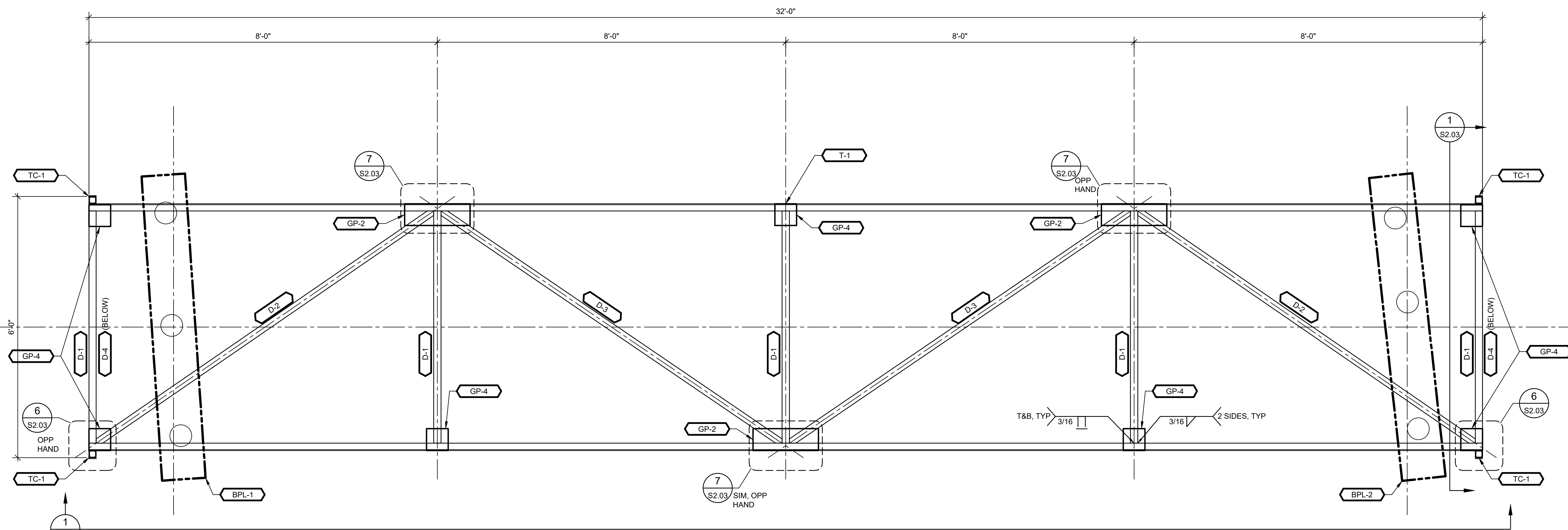
>>>>CAUTION - CALL 811<<<<
 UTILITY NOTIFICATION CENTER
 BEFORE YOU DIG!
 WWW.CALL811.COM

Also, verify all underground utilities not located by the 811 service by using a commercial location service and call SPR Inspection Request Line (206) 684-7034.



TRUSS ELEVATION
 SCALE: 3/4" = 1'-0"

1
 S2.02



BRIDGE DECK PLAN
 SCALE: 3/4" = 1'-0"

2
 S2.02

NOT FOR CONSTRUCTION

APPROVED FOR ADVERTISING:
 Liz Alzeer
 Purchasing & Contracting

Seattle, Washington _____ Date _____ 20____

Signature: _____
 Director, Purchasing & Contracting

3		
2		
1	REVISION BY GB - DETAILS ADDITION	1/25/2024
NO.	REVISION - AS BUILT	DATE

REVIEWED: _____ DATE _____
 PARK ENGINEER

All work done in accordance with the City of Seattle Standard Plans and Specifications in effect on the date shown above, and supplemented by Special Provisions.

AUTOSCAN, INC
 4040 23RD AVE WEST,
 SEATTLE, WA 98199



8/21/2024

Seattle Parks & Recreation

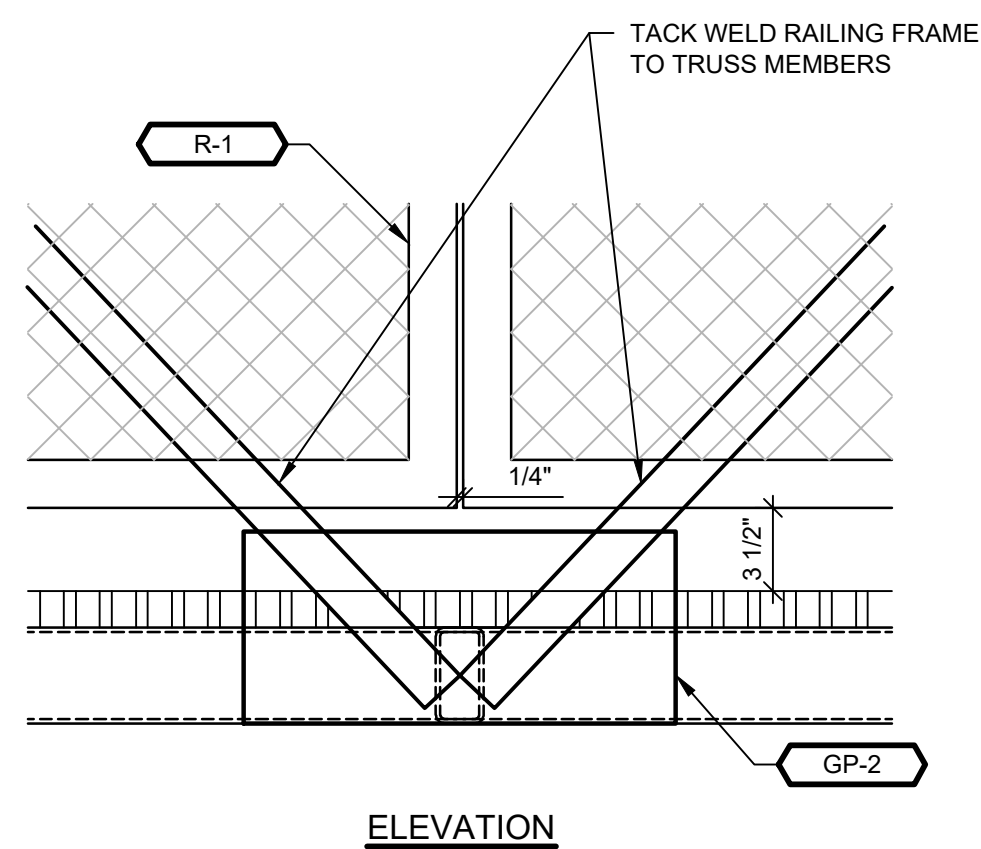
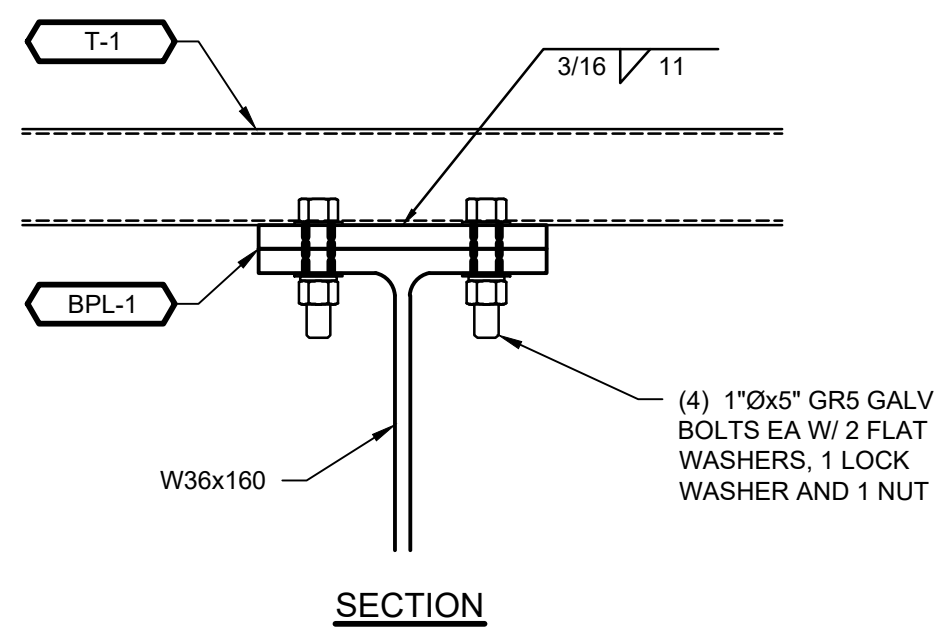
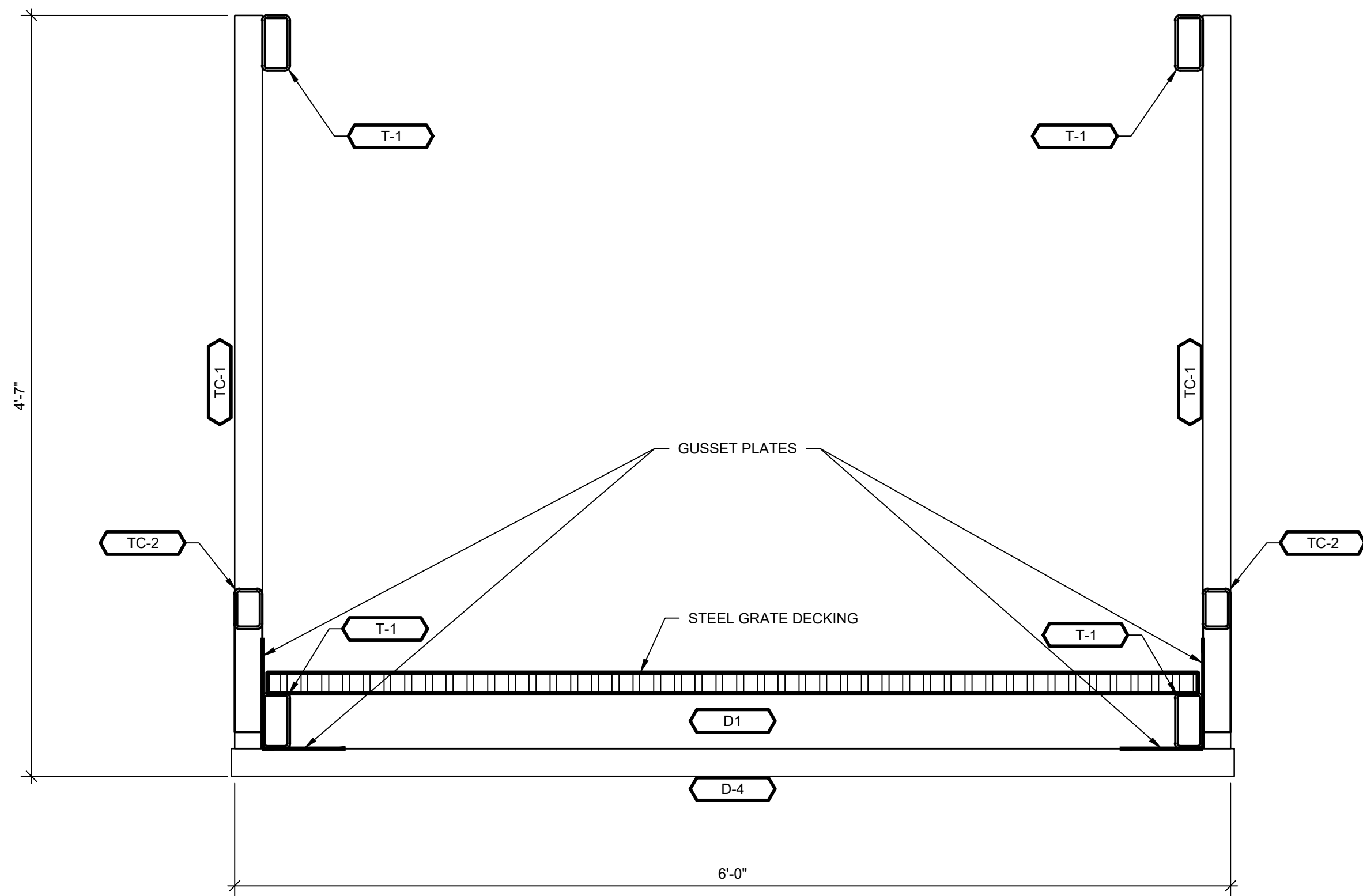
GREG DAVIS NATURAL AREA

LONGFELLOW CREEK
 TRUSS BRIDGE

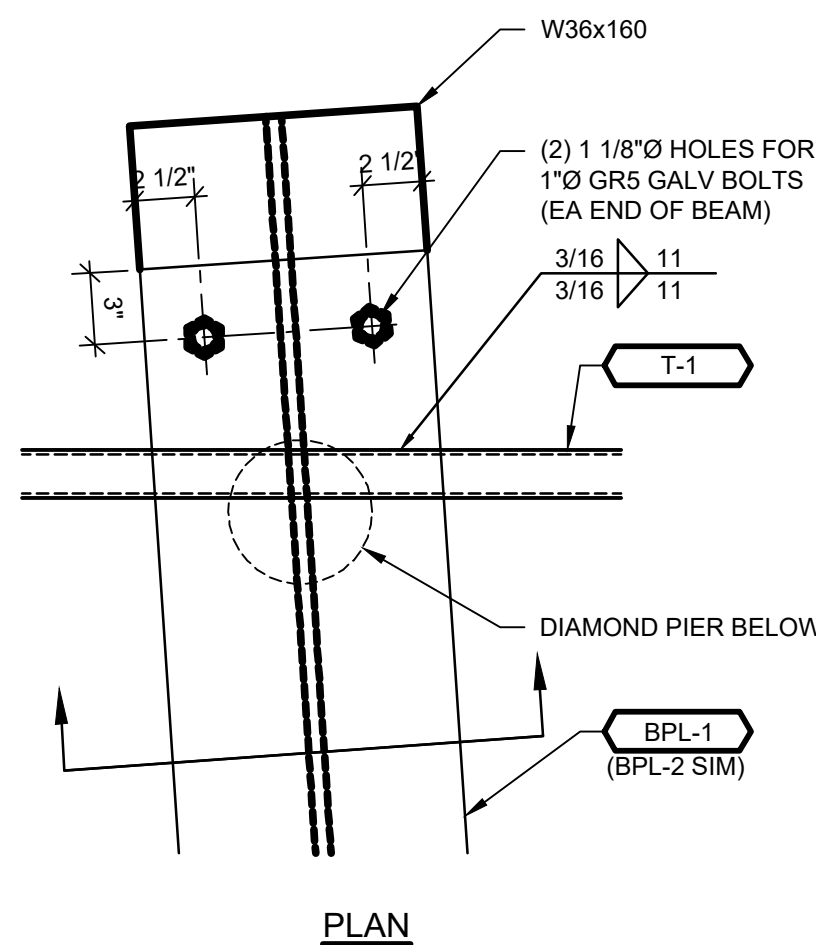
TRUSS & DECK ASSEMBLY

DESIGNED EA	DATE 8/21/2024
DRAWN AUTOSCAN, INC	SHEET 03 of 06
CHECKED EA	
ORDINANCE NO. _____	S2.02
SPECIFICATION NO. _____	
SCALE	

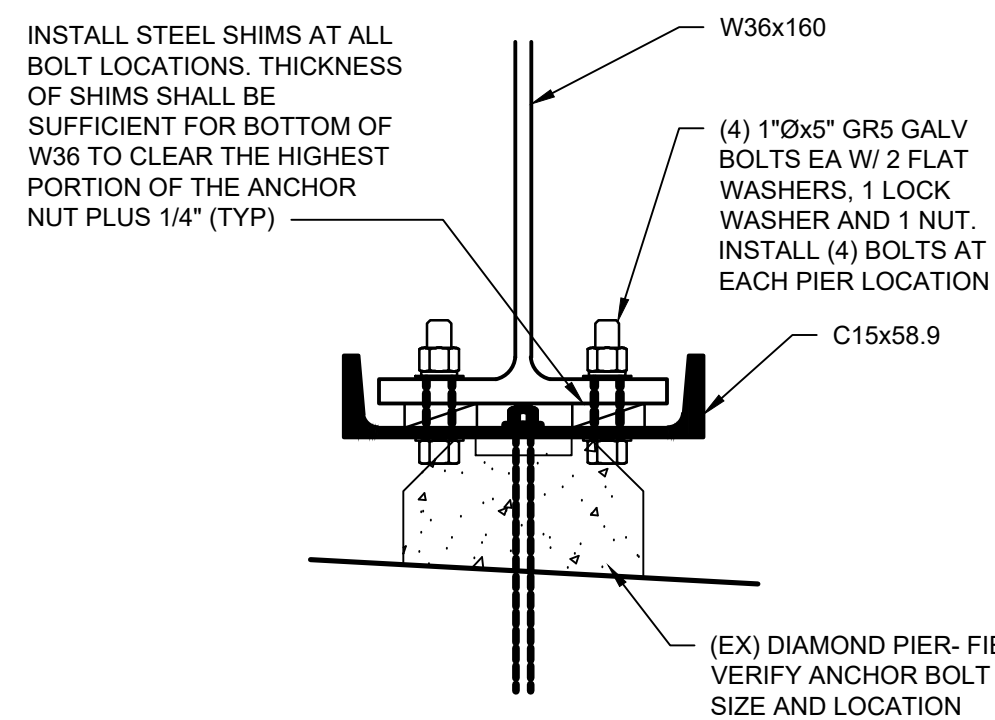
MATERIAL SCHEDULE				
MEMBER	QTY	SIZE	FINISH	DESCRIPTION / ASSEMBLY INFORMATION
BPL-1	1	PL 1x12x8'-0"	COR-TEN	TRUSS BEARING PLATE- FIELD LOCATE AND DRILL HOLES. FIELD WELD TO TRUSS BOTTOM CHORD.
BPL-2	1	PL 1x12x8'-0"	COR-TEN	TRUSS BEARING PLATE- FIELD LOCATE AND DRILL HOLES. FIELD WELD TO TRUSS BOTTOM CHORD.
C-1	2	C15x53.9x9'-0"	COR-TEN	BEARING SILL CHANNEL. FIELD VERIFY ANCHOR BOLT HOLE LOCATIONS, SHIM AS REQ'D, FIELD WELD SHIMS.
D-1	5	HSS 4x2x3/16x00'-00"	COR-TEN	DECK CROSS MEMBER
D-2	2	HSS 4x2x3/16x00'-00"	COR-TEN	DIAGONAL DECK CROSS MEMBER
D-3	2	HSS 4x2x3/16x00'-00"	COR-TEN	DIAGONAL DECK CROSS MEMBER
D-4	2	HSS 2x2x3/16x00'-00"	COR-TEN	DECK CROSS MEMBER
T-1	4	HSS 4x2x3/16x00'-00"	COR-TEN	TRUSS TOP / BOTTOM CHORD
TC-1	4	HSS 2x2x3/16x00'-00"	COR-TEN	TRUSS WEB MEMBER
TC-2	4	HSS 2x2x3/16x00'-00"	COR-TEN	TRUSS WEB MEMBER
TC-3	12	HSS 2x2x3/16x00'-00"	COR-TEN	TRUSS WEB MEMBER
W-1	1	W36x160x9'-0"	COR-TEN	NORTH END TRUSS BEARING BEAM
W-2	1	W36x160x9'-0"	COR-TEN	SOUTH END TRUSS BEARING BEAM
GP-1	4	15"x8"x1/4"	COR-TEN	GUSSET PLATE FOR JOINT CONNECTION
GP-2	6	18"x8"x1/4"	COR-TEN	GUSSET PLATE FOR JOINT CONNECTION
GP-3	4	9"x8"x1/4"	COR-TEN	GUSSET PLATE FOR JOINT CONNECTION
GP-4	6	6"x6"x1/4"	COR-TEN	GUSSET PLATE FOR JOINT CONNECTION
R-1	4	7'-11 7/8"x3'-8"x2"	COR-TEN	WELDED WIRE MESH RAILING PANEL
R-2	4	7'-11 3/4"x3'-8"x2"	COR-TEN	WELDED WIRE MESH RAILING PANEL



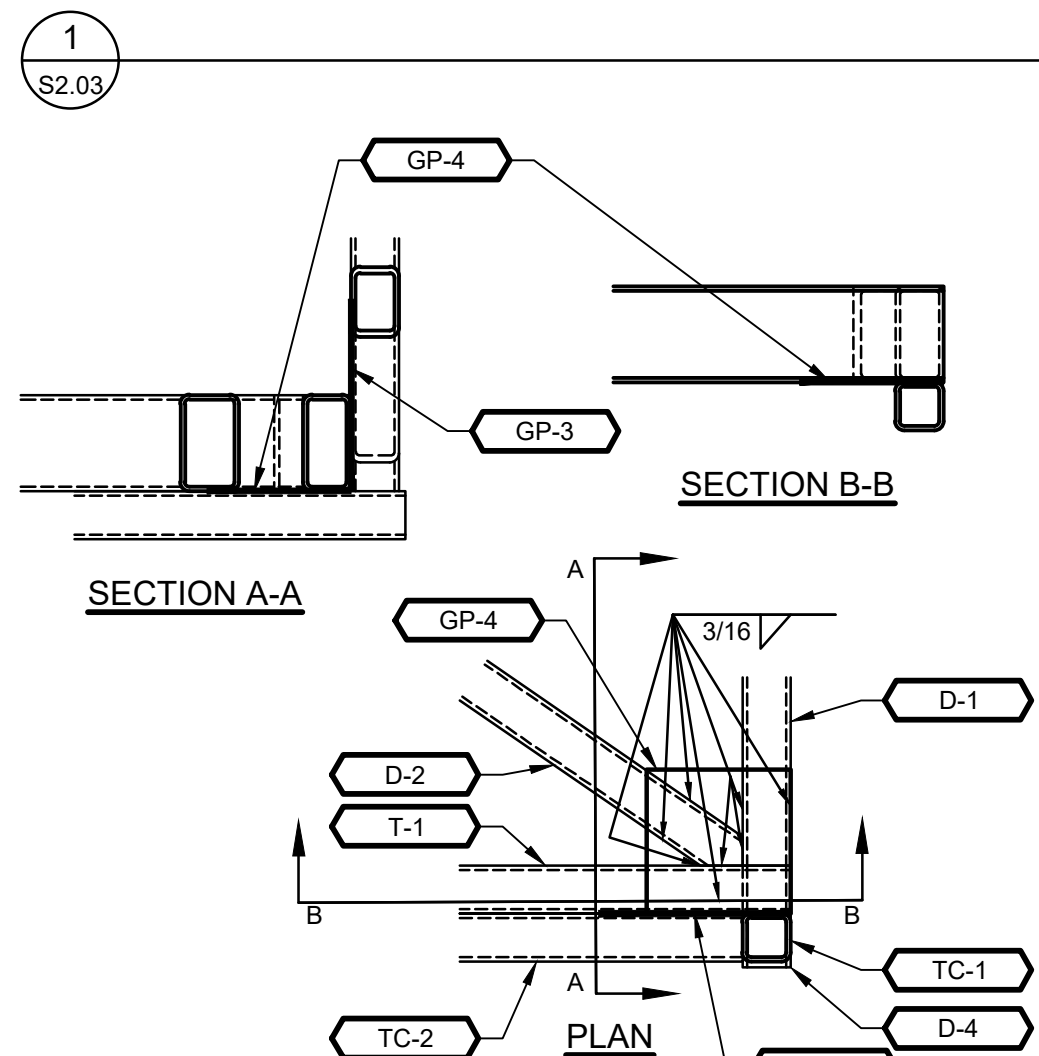
10 TRUSS BRIDGE RAILING SPACING DETAIL
SCALE: 1 1/2" = 1'-0"



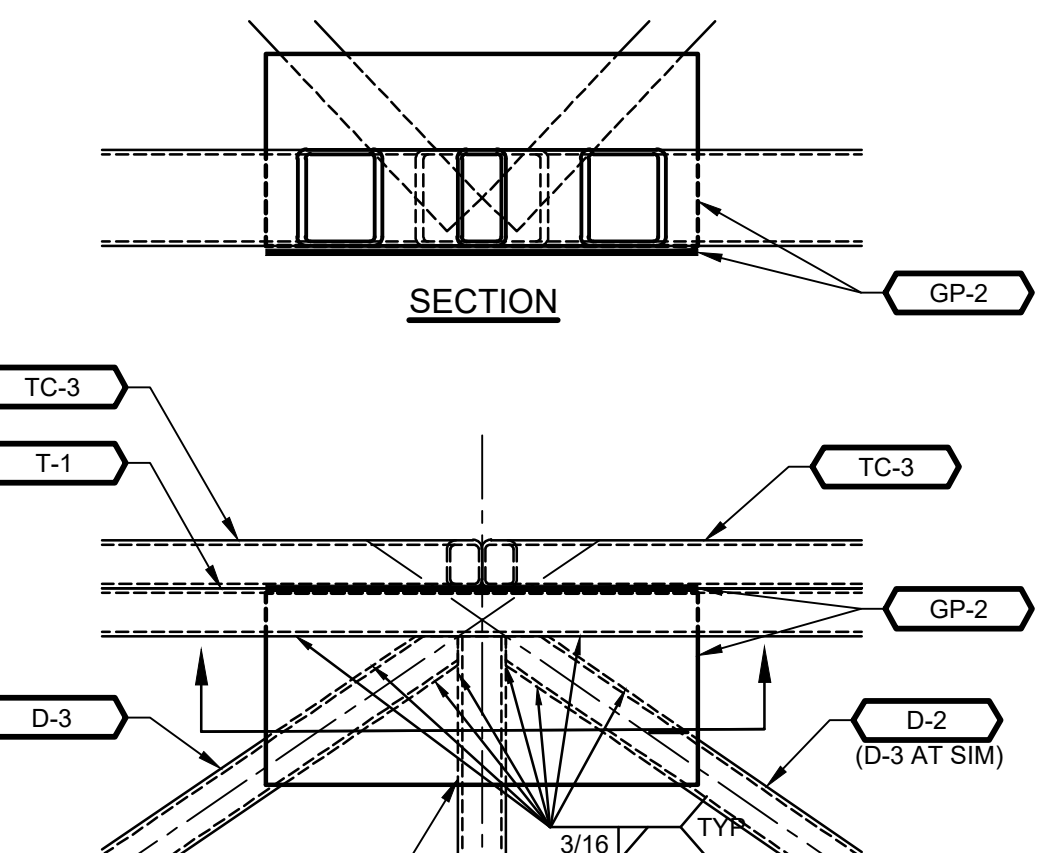
8 TRUSS BRIDGE TO W36 CONN DETAIL
SCALE: 1 1/2" = 1'-0"



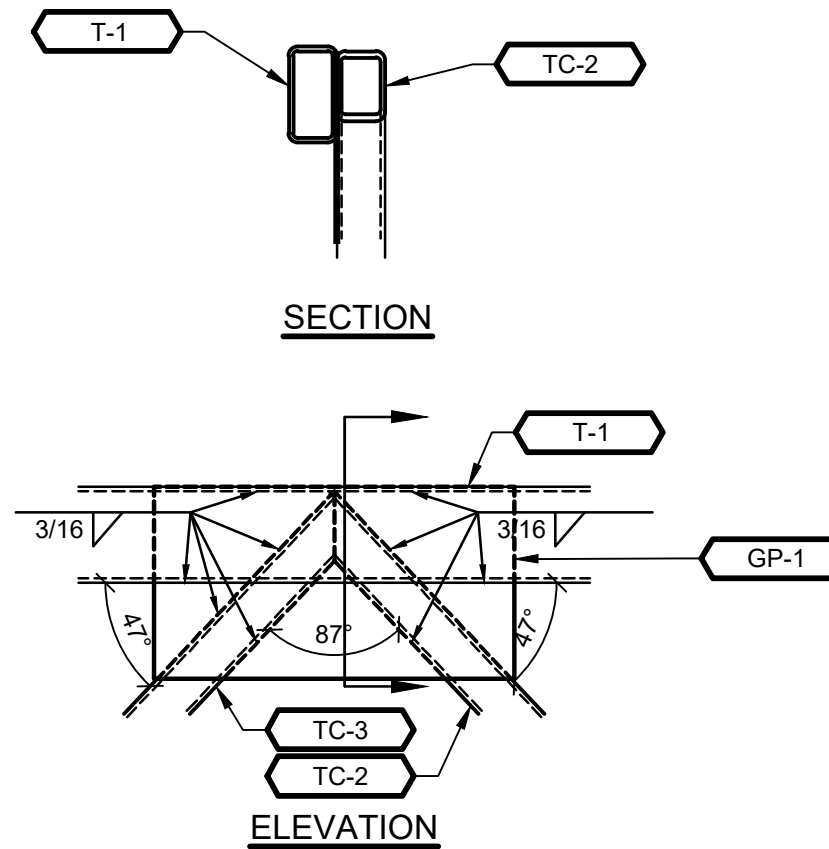
7 W36 TO C15 TO PIER CONN DETAIL
SCALE: 1 1/2" = 1'-0"



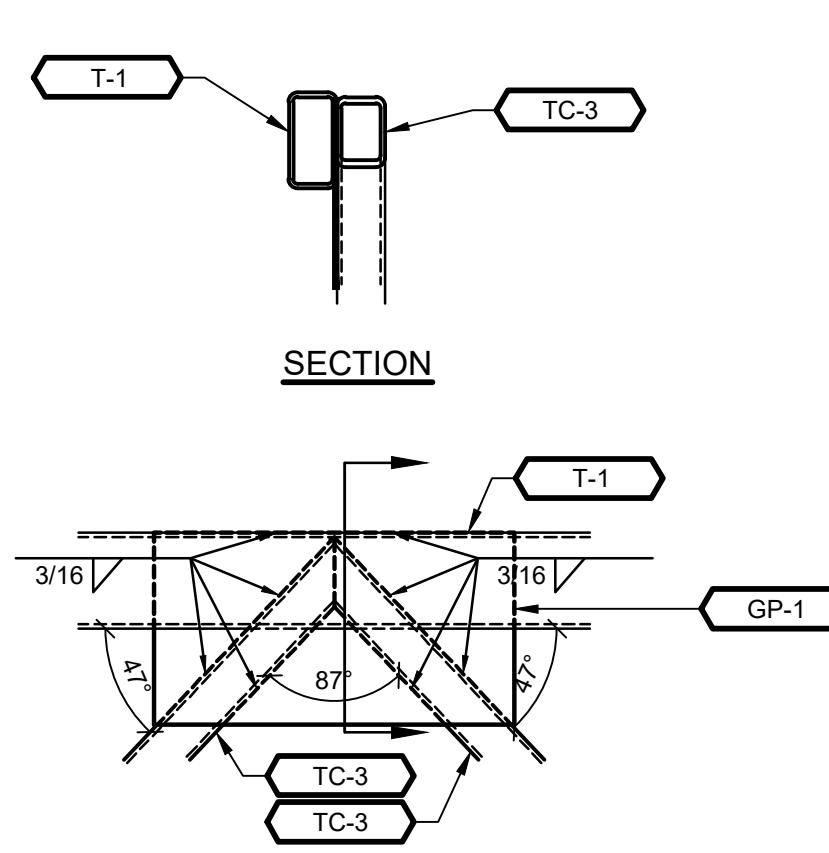
6 DECK BRACING CORNER DETAILS
SCALE: 1 1/2" = 1'-0"



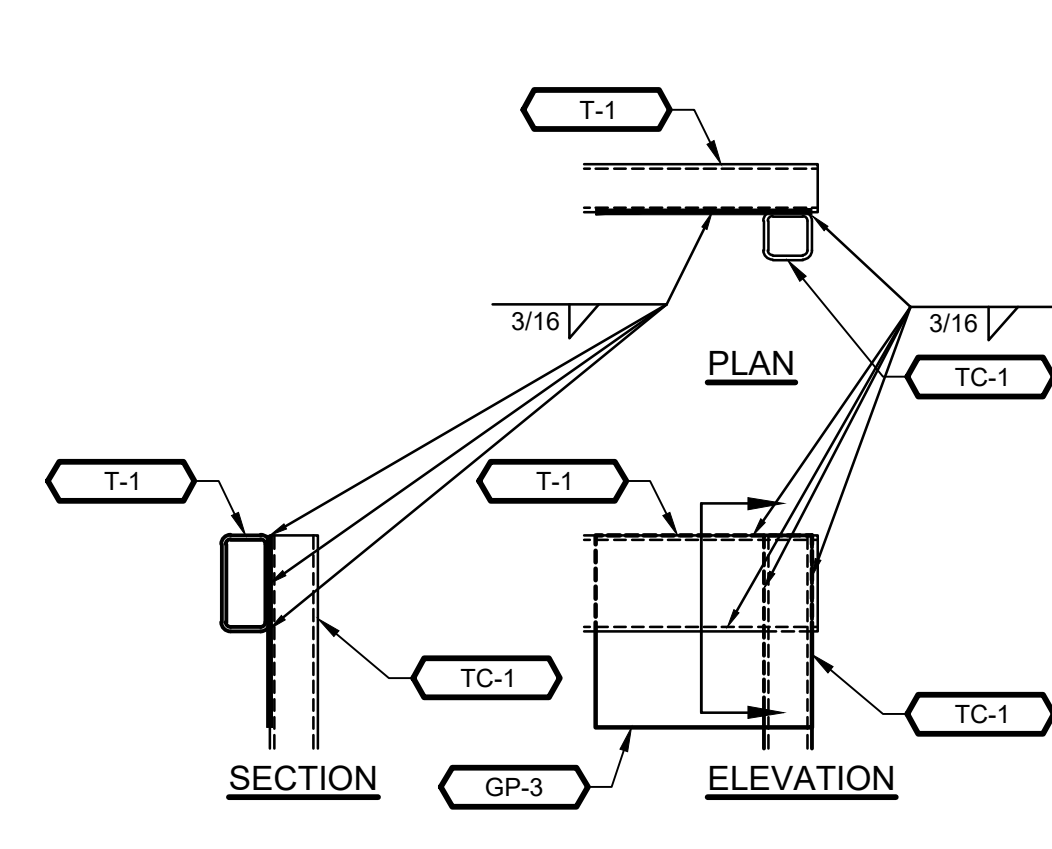
7 INTER-MEDIATE DECK BRACING DETAIL
SCALE: 1 1/2" = 1'-0"



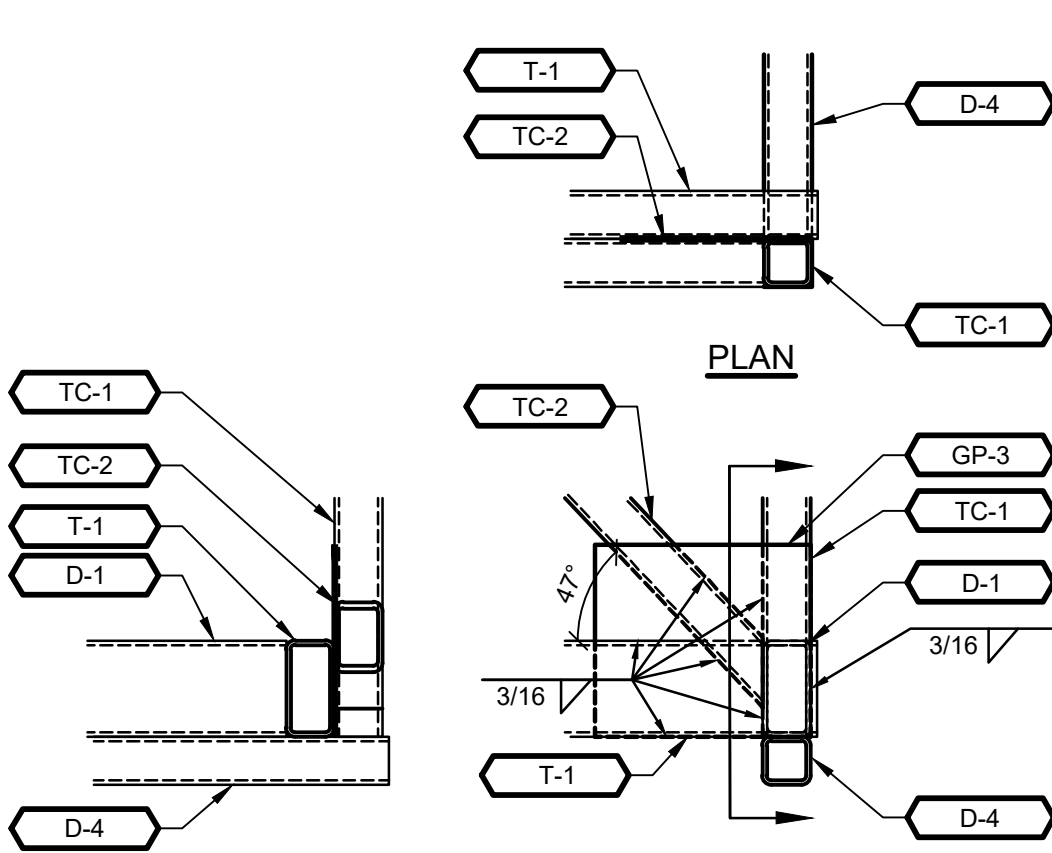
4 UPPER TRUSS CHORD DETAILS
SCALE: 1 1/2" = 1'-0"



4 UPPER TRUSS CHORD DETAILS
SCALE: 1 1/2" = 1'-0"



2 UPPER TRUSS CORNER DETAILS
SCALE: 1 1/2" = 1'-0"



3 LOWER TRUSS CORNER DETAILS
SCALE: 1 1/2" = 1'-0"

>>>>CAUTION - CALL 811<<<<
UTILITY NOTIFICATION CENTER
BEFORE YOU DIG!

WWW.CALL811.COM
Also, verify all underground utilities not located by the 811 service by using a commercial location service and call SPR Inspection Request Line (206) 684-7034.

APPROVED FOR ADVERTISING:
Liz Alzeer
Purchasing & Contracting

Seattle, Washington _____ Date _____ 20____

Signature: _____
Director, Purchasing & Contracting

3		
2		
1	REVISION BY GB- DETAILS ADDITION	1/25/2024
NO.	REVISION - AS BUILT	DATE

REVIEWED: _____ DATE _____
PARK ENGINEER

All work done in accordance with the City of Seattle Standard Plans and Specifications in effect on the date shown above, and supplemented by Special Provisions.

AUTOSCAN, INC
4040 23RD AVE WEST,
SEATTLE, WA 98199



8/21/2024

Seattle Parks & Recreation

GREG DAVIS NATURAL AREA

LONGFELLOW CREEK TRUSS BRIDGE

SECTIONS & DETAILS

DESIGNED EA	DATE 8/21/2024
DRAWN AUTOSCAN, INC	SHEET 04 of 06
CHECKED EA	
ORDINANCE NO. _____	S2.03
SPECIFICATION NO. _____	
SCALE	

NOT FOR CONSTRUCTION

