

**SEATTLE PARKS
AND RECREATION**

Greenways Initiative



Seattle Bicycle Advisory Board

11/4/15

Photo of 2015 Summer Parkways (courtesy of SDOT) 1

City Department Collaboration



Photo of Seattle Parks and Recreation Superintendent Jesús Aguirre (left), Seattle Mayor Ed Murray (center) and Seattle Department of Transportation Director Scott Kubly (right) at 2015 Summer Parkways (courtesy of SDOT)

Seattle Parks and Recreation (SPR) Greenways Initiative Capital Improvement Projects (CIP) Implementation Plan

Initiative Description

- Develop SPR & SDOT partnership
- Enhance and activate connection points from Neighborhood Greenways to Parks
- Greenways provide people of all ages and abilities comfortable and attractive places to walk and ride
- Funding for the CIP component (\$200,000) and the activation and events component (\$118,000) begins January 2016

Initiative Objective

- Coordinate with SDOT Greenway Implementation Plan and SPR Greenways activation programming
- Enhance the impact and connection of all programs and expenditures and leveraging funds from other departments
- **Improve access and entrances to make parks more welcoming destinations for people of all ages and abilities both walking and bicycling**

Seattle Parks and Recreation (SPR) Greenways Initiative Capital Improvement Projects (CIP) Implementation Plan

Implementation Plan

- SPR and SDOT collaborate to implement capital improvement projects
- Capital project prioritization based on the SDOT Bicycle Master Plan and implementation plan
 - Bicycle Master Plan Goals: safety, connectivity, equity, livability and ridership
- **Focus on bicycle and pedestrian access improvements to parks adjacent Greenways and other low stress bicycle facilities**
- Present potential projects to stakeholders to gather ideas, build consensus and leverage funding
- Provide an annual report to highlight accomplishments of the program

Policy Considerations

- Parks Bicycle Policy
- The improvements sponsored by SPR are to be restricted to SPR's property
- SDOT Bicycle Master Plan and corresponding Five Year Implementation Plan

seattle bicycle master plan
April 2014



The Seattle Department of Transportation

SEATTLE BICYCLE MASTER PLAN

Implementation Plan 2015 - 2019



Neighborhood Greenway: Draft 2014 - 2019 Work Plan 10/20/14

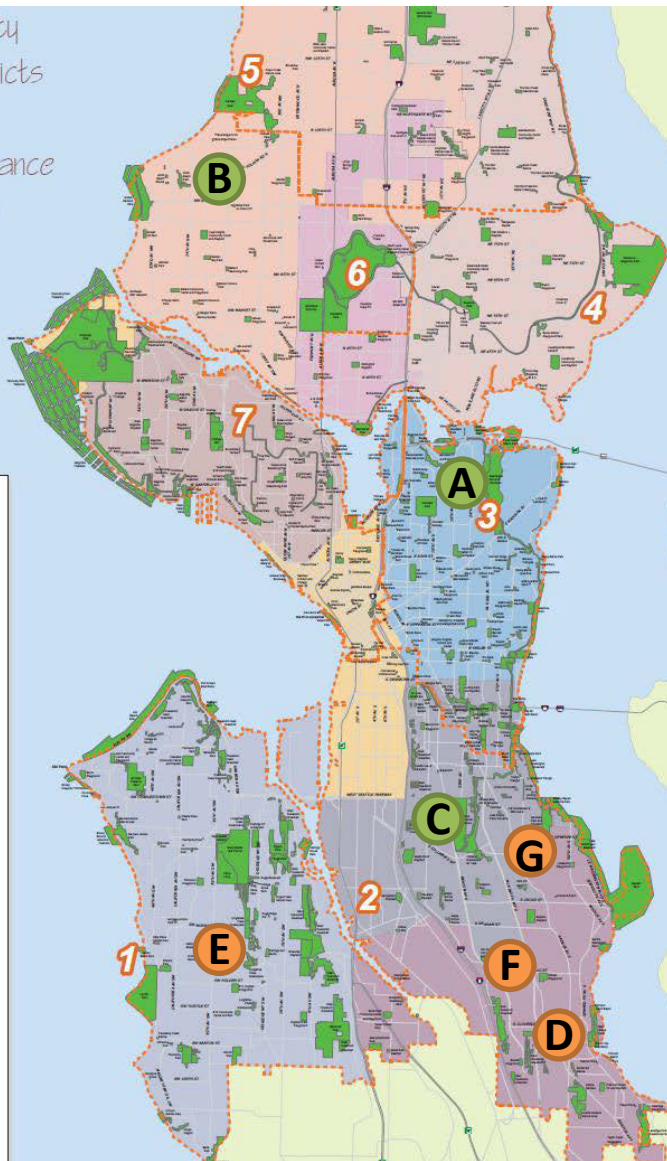


Phase	No.	Project Name	Street	From	To	Length (mi)
Existing	1	Wedgwood	39th Ave NE	NE 52nd St	NE 80th St	1.4
	2	PhinnyWood	Fremont Ave N	N 77th St	N 110th St	1.4
	3	Ballard	NW 58th St	Seaview Ave NW	4th Ave NW	2.1
	4	Wallingford	NE 44th St / NE 43rd St	Stone Way N	Latona Ave NE	0.9
	5	Beacon Hill	18th Ave S / Lafayette Ave S / 14th Ave S / 13th Ave S / 12th Ave S	Mountains to Sound Trail	S Lucile St	2.8
	6	Delridge	26th Ave SW	SW Anover St	SW Graham St	1.3
					TOTAL	9.9
Build 2014	7	Olympic Hills	25th Ave NE	NE 125th St	NE 145th St	1.3
	8	Wedgwood	38th Ave NE / NE 89th St	NE 80th St	32nd Ave NE	0.8
	9	U-District	12th Ave NE	NE Campus Pkwy	NE Ravenna Blvd	1.1
	10	Madison Park	37th Ave E / E Garfield St	E Madison St	E Madison St	0.4
	12	Jackson Place	S Dearborn St / Hiawatha Pl S	Rainier Ave S	S Norman St	0.4
					TOTAL	4.0
Build 2015	13	Ballard	17th Ave NW	NW 90th St	Shilshole Ave NW	2.2
	14	Central Area (Phases 1 - 3)	21st Ave E	E Roanoke St	Rainier Ave S	5.0
	15	Rainier Valley	S Myrtle St	37th Ave S	Seward Park Ave S	0.9
	16	Beacon Hill	Jefferson Park	S Spokane St	15th Ave S	
	17	Delridge	21st Ave SW / 17th Ave SW / 15th Ave SW	Delridge Way SW	SW Cambridge St	4.0
					TOTAL	12.1
Build 2016	18	Rainier Valley	34th Ave S / Letitia Ave S / 35th Ave S / Renton Ave S / 39th Ave S / 46th Ave S	S Mt. Baker Blvd	S Henderson St	3.9
					TOTAL	3.9
Build 2017	19	Greenwood	N 100th St	Fremont Ave N	College Way N	1.1
	20	Ballard	NW 83rd St	Loyal Way NW	Aurora Ave N	2.5
	21	First Hill / East Lake	Terry Ave / Melrose Ave E / Franklin Ave E	Broadway	Eastlake Ave E	3.5
	22	First Hill	Union St	Broadway	9th Ave	0.5
	23	Central Area	E Columbia St	Broadway	29th Ave	1.2
	24	International District	S King St	5th Ave S	20th Ave S	1.3
	25	West Seattle	34th Ave SW	SW Roxbury St	26th Ave SW	3.0
26	Beacon Hill / Mt Baker	S Snoqualmie / S Alaska / Cheasty Blvd S / S Walden / 34th Ave S / Courtland Pl S / S Dakota	13th Ave S	MLK JR Way S	2.6	
					TOTAL	15.7

Seattle Parks and Recreation Greenways Initiative Draft Proposed Capital Improvement Projects

Proposed SPR Implementation Year	Park	Adjacent Greenway	SDOT Project Completion Year	New Council District	SPR Maintenance District	Potential Improvements	Other/Notes	Priority (1=high 5=low)	Network Connection Value (1-5)	Cost Allocation (Design/Const./Mgmt)
	GREENWAYS									
2016	Interlaken Park	21st Ave E Greenway Central Area Neighborhood Greenway (CANG)	2015	3	Central East	Stair access improvements, bike runnel, leverage funds with SDOT work	Scheduled for Construction by SDOT in 2016	1	1	\$80,000
2016	SoundView Playfield	17th Ave NW Greenway	2015	6	Northwest	Take fence down at NW 92nd St for access and collector to the start of the greenway, in-house design of new entry, wayfinding, bicycle parking	Connections to Whitman M.S. & North Beach Elementary	1	3	\$50,000
2016	Jefferson Park	12th Ave S (and pending Jefferson Multi-Use trail)	Greenway Completed/ 2015-Trail	2	South Central	Drainage on 16 th (and parking formalized), SDOT contributed funds, Parks in construction phase	Safe Routes to School Funds, Improve connection to Asa Mercer School	2	4	\$50,000
2016 Design 2017 Const.	Rainier Beach Playfield	43RD Ave S / Rainier Valley Greenway	2016	2	South East	Repave and potentially widen existing asphalt path east of Dunlap School w/o CC. 2016 greenway/safe routes to school	Safe Routes to School Funds available. No bike ramps/access on south side. Serious root heave along entire path.	1	1	\$20,000 Design \$100,000 Const.
2017	Walt Hundley Playfield	34th Ave SW	2017	1	South West	Bike Ramps / bike racks will connect to existing paths and High Point Community Center	West Seattle Elementary School	2	4	\$20,000
2017	John C. Little Sr. Park	S Myrtle St. Greenway	2015	2	South Central	Connection at basketball courts. Trail pavement Improvements, wayfinding	Connection to Chief Sealth Trail / New Holly	3	3	\$50,000
2017	Genesee Park	38 th Ave S / Rainier Valley Greenway	2016	2	South Central	Trail pavement improvements / trail widening, wayfinding	Connection to Rainier Community Center & Playfield	2	4	\$30,000

Seattle City
Council Districts
&
Park Maintenance
Districts



Legend

- Council Districts
- Park Boundary

Park Districts

- North West
- North Central
- North East
- Central West
- RPSO
- Central East
- South West
- South Central
- South East



©2015 CITY OF SEATTLE
All rights reserved.
No warranties of any sort, including
accuracy, fitness or merchantability
accompany this product.
Map Date: 6/5/2015

Proposed SPR Implementation Year	Project	Park	New Council District	SPR Maintenance District
2016	A	Interlaken Park	3	Central East
2016	B	SoundView Playfield	6	Northwest
2016	C	Jefferson Park	2	South Central
2016 Design 2017 Const.	D	Rainier Beach Playfield	2	South East
2017	E	Walt Hundley Playfield	1	South West
2017	F	John C. Little Sr. Park	2	South Central
2017	G	Genesee Park	2	South Central

SBAB Advisory Input

- Provide feedback and potential additions to the proposed project list
- Suggest additional low cost elements that could make parks more welcoming to bicyclists and pedestrians
- Identify additional key stakeholders for collaboration
- Recommend types of programming / activation that should be prioritized

Seattle Parks and Recreation
Greenways Initiative
Activation & Programming

Activation & Programming

- Seattle Parks and Recreation will hire a Program Coordinator for Greenways activation in 2016
- Collaborate with SDOT on growing Summer Parkways
- Plan one 2016 grand opening event of a completed project with focus on public safety and education
- Manage and grow/integrate Bicycle Sunday Program



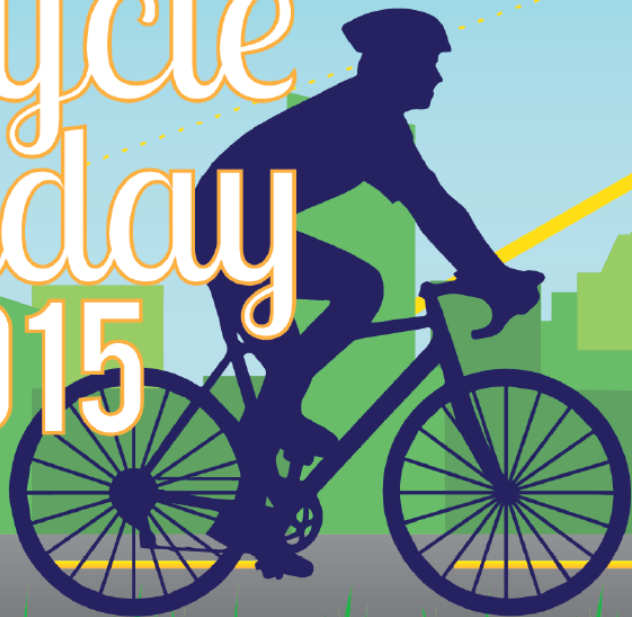
SPR Greenways Coordinator First Year Priorities

- Grow opportunities through solid partnerships and sponsorships
- Insure equity and RSJI goals are met in implementation
- What does SBAB see as highest priority activation in Parks?
(via Greenways Coordinator)



50TH ANNIVERSARY

Bicycle Sunday 2015



SUNDAYS 10AM-6PM

MAY 3, 17, 31 • JUNE 21, 28 • JULY 5, 12

AUG 9, 16, 30 • SEPT 13, 20

SEATTLE PARKS AND RECREATION



Seattle Summer PARKWAYS

We'll be riding, jogging, playing,
dancing & more in the streets

Seattle Summer Parkways will take over the streets so you can explore and experience neighborhoods like never before.

CENTRAL DISTRICT

SATURDAY, SEPTEMBER 12, 2015, 11 AM - 3 PM

BALLARD

SATURDAY, SEPTEMBER 19, 2015, 11 AM - 3 PM

Activities include:



FOOD TRUCKS



LIVE MUSIC



FITNESS



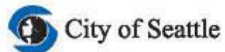
ZEN ZONE



FAMILY ZONE

Visit: www.seattle.gov/summerparkways to learn more

Contact: Summer.Parkways@seattle.gov

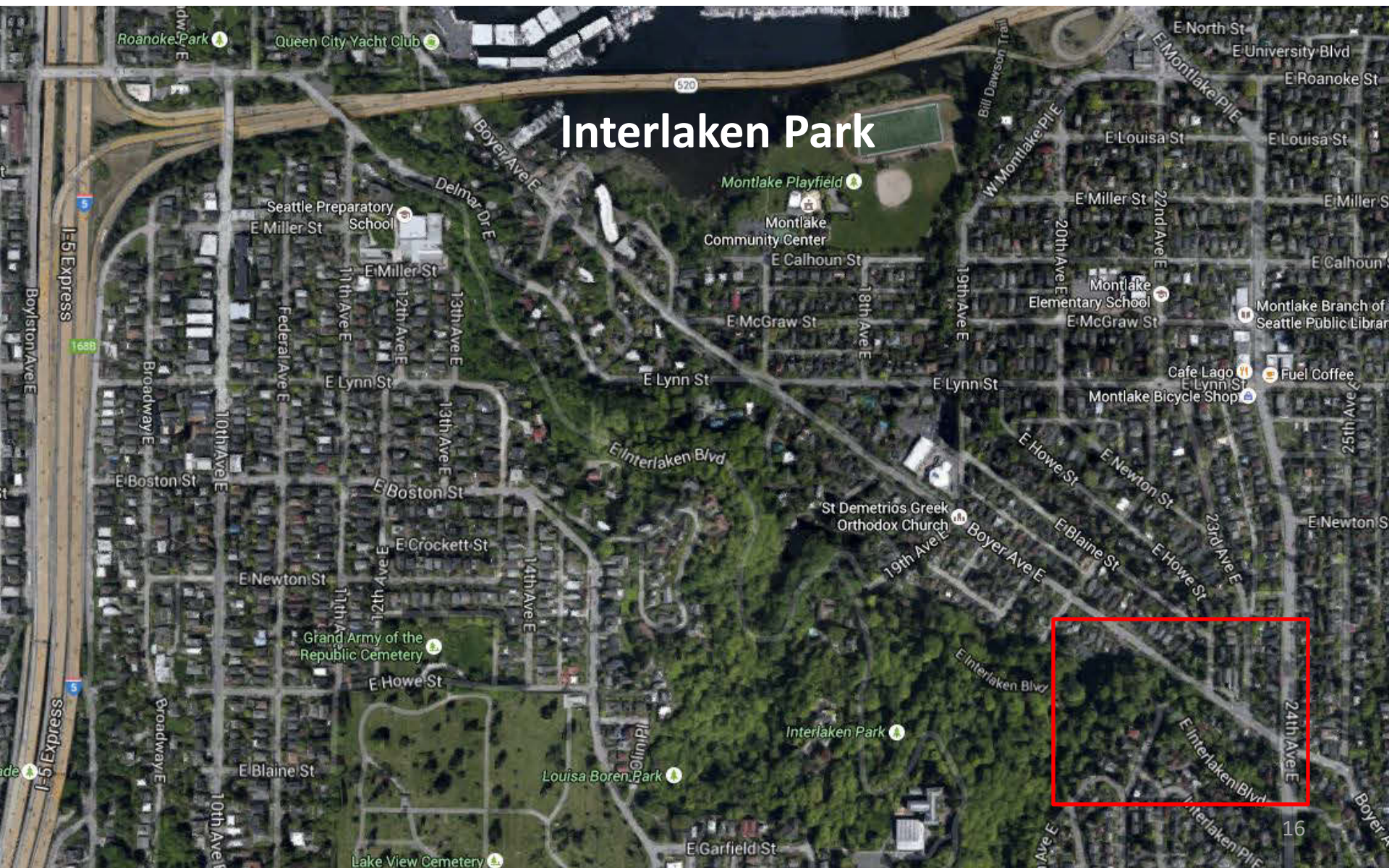


2015 Summer Parkways



Seattle Parks and Recreation Greenways Initiative Example Projects

Interlaken Park



Interlaken Park

E Howe St

21ST AVE E

BOYER AVE E

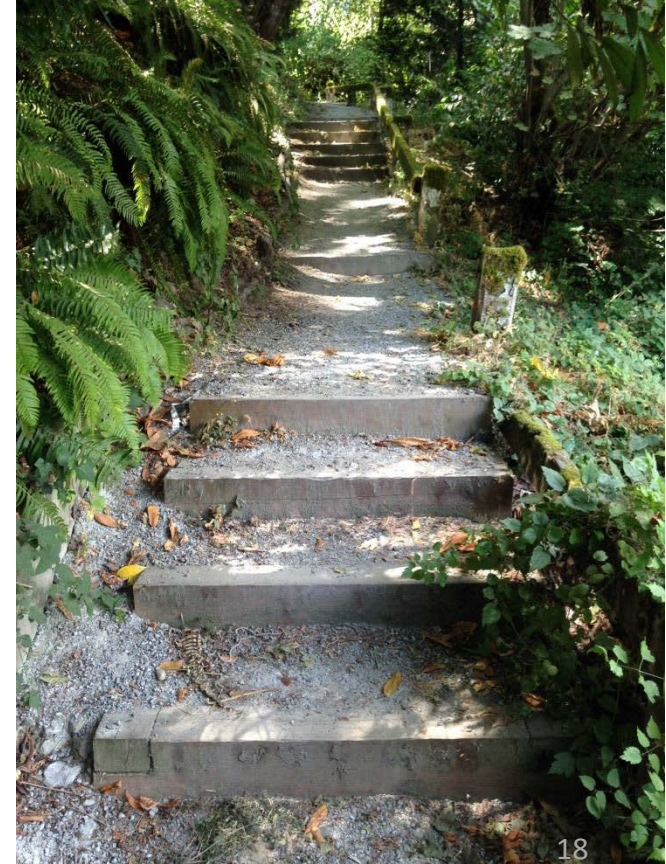
21ST AVE E

— Improvement Location

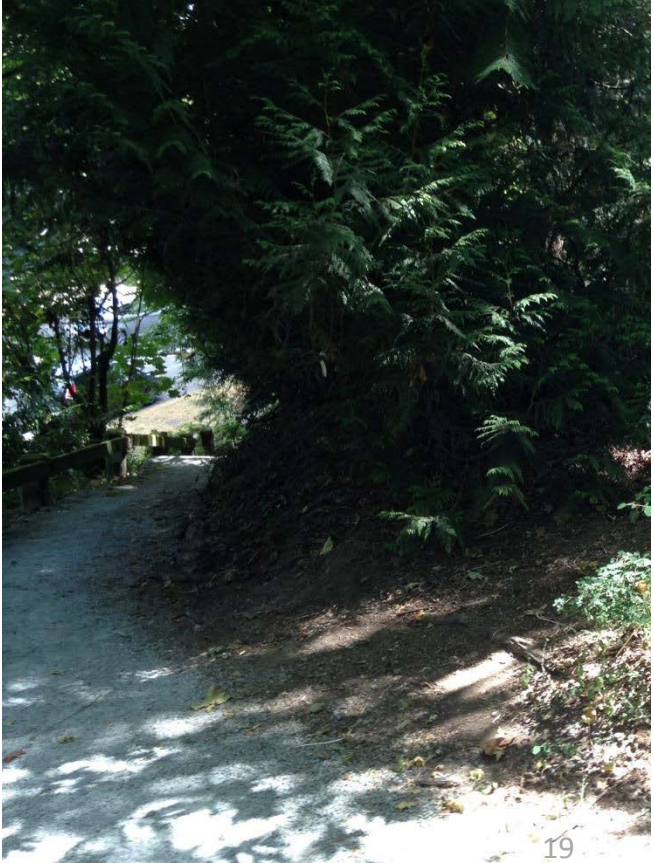


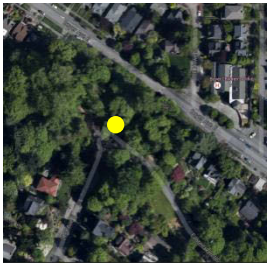


Interlaken Park Existing Conditions



Interlaken Park Existing Conditions

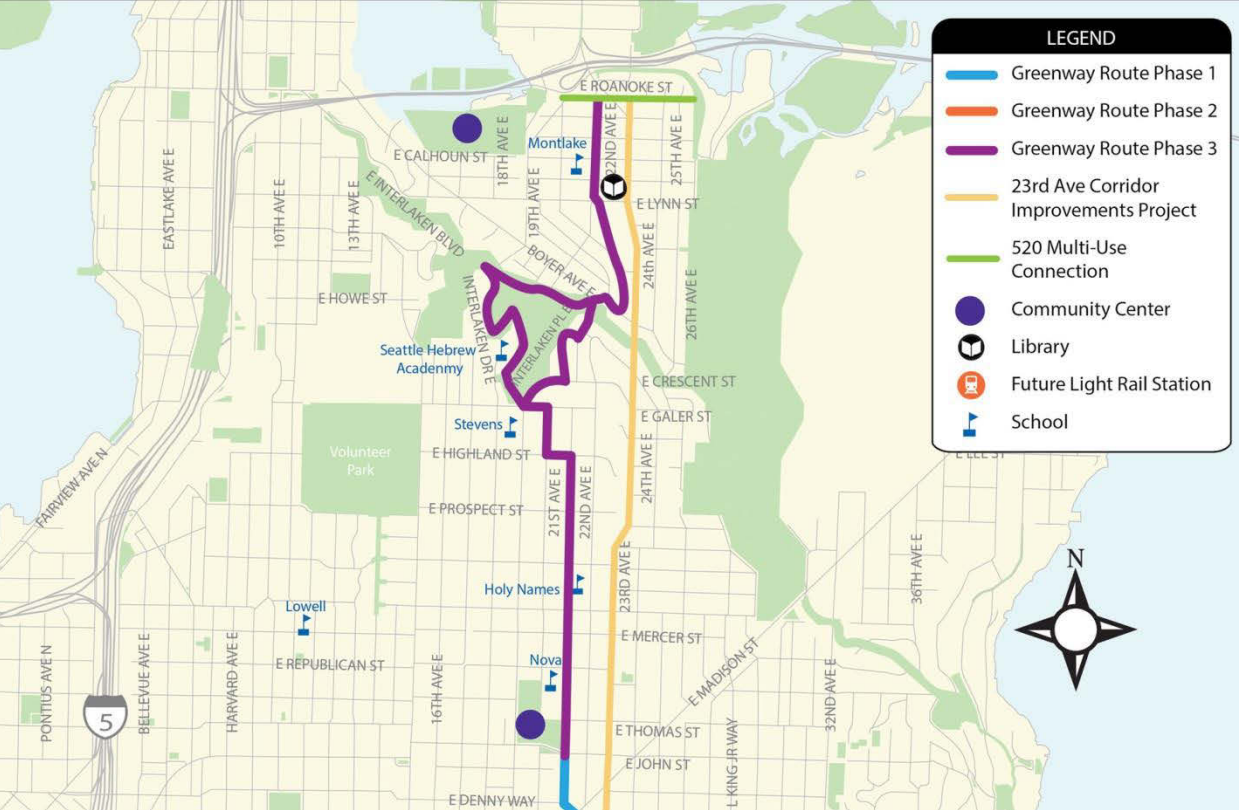




Interlaken Park Existing Conditions

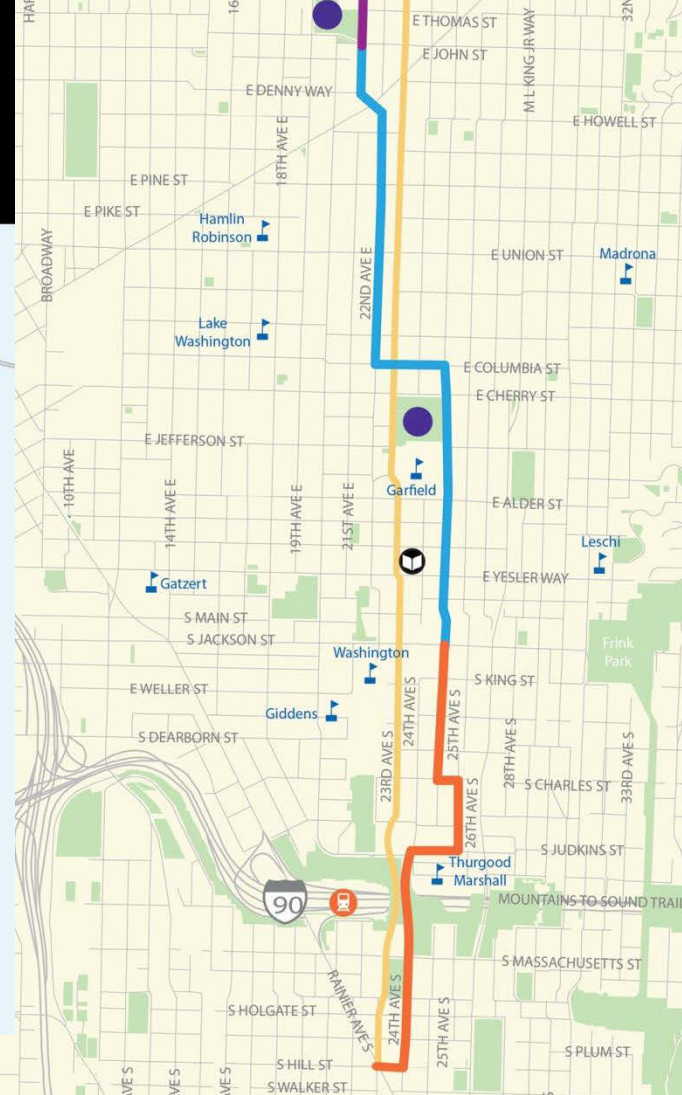


Central Area Neighborhood Greenway Selected Route

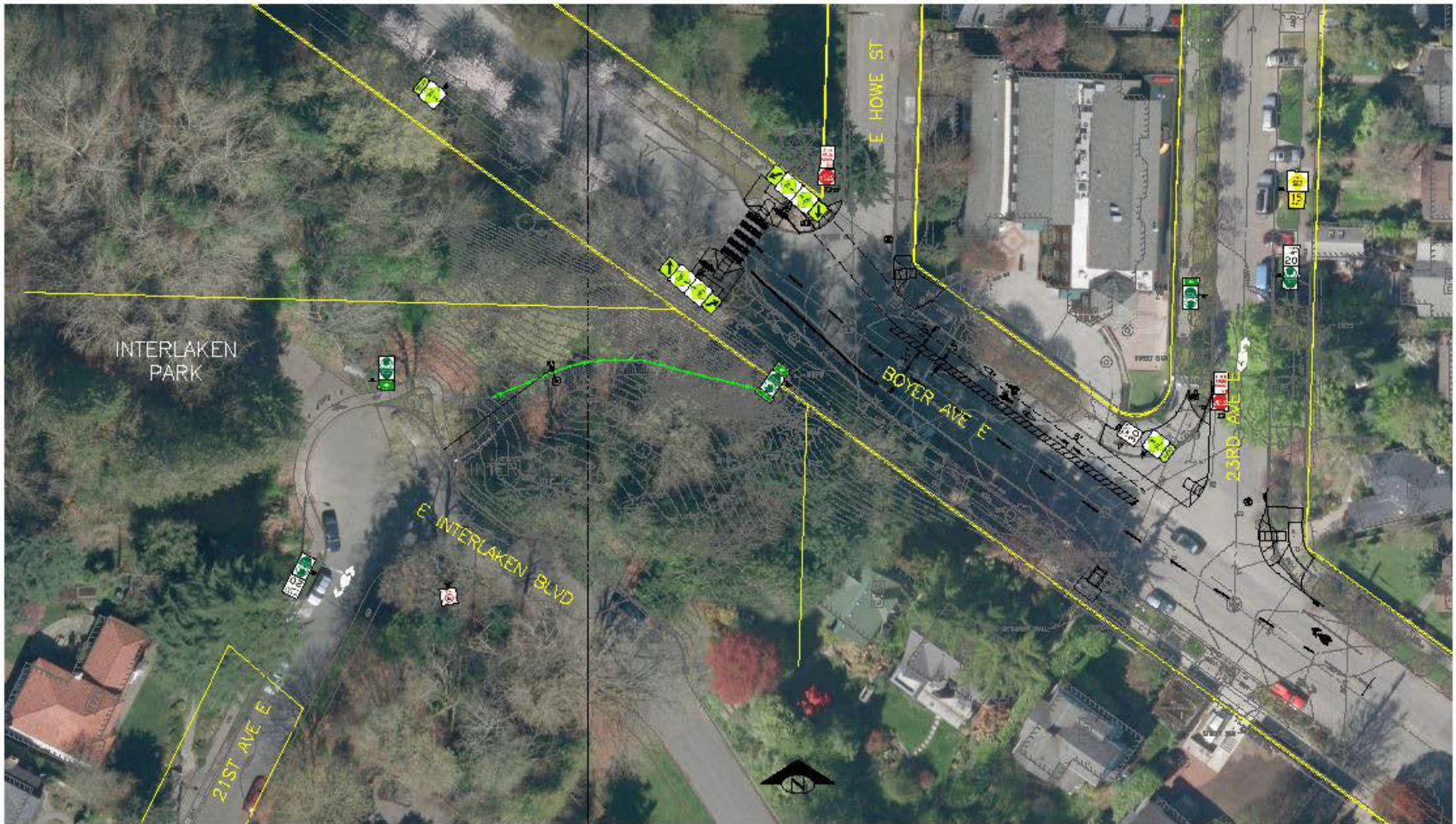


LEGEND

- Greenway Route Phase 1
- Greenway Route Phase 2
- Greenway Route Phase 3
- 23rd Ave Corridor Improvements Project
- 520 Multi-Use Connection
- Community Center
- Library
- Future Light Rail Station
- School



DATE	BY	REVISION



PARKS PROPERTY
INTERLAKEN PARK

CENTRAL AREA
NEIGHBORHOOD GREENWAY
PHASES 2 AND 3

PC	TS6352A
REV	
DO	TS6352C
WALLEY PLAN NO. 700-270	
SHEET 10 OF 44	

APPROVED FOR ADVERTISING
NANCY LOCKE
GOVERNOR OF WASHINGTON
SEATTLE, WASHINGTON

NAME OR INITIALS AND DATE
DESIGNED BY: CHESTER, DA.
CHECKED BY: ...
DATE: ...

INITIALS AND DATE
REVISION: ...
DATE: ...
BY: ...
CHECKED BY: ...
DATE: ...

ALL WORK SHALL BE DONE IN ACCORDANCE WITH THE CITY OF SEATTLE STANDARD PLANS AND SPECIFICATIONS FOR PUBLIC WORKS AND SHALL BE SUBJECT TO THE CITY OF SEATTLE STANDARDS.



City of Seattle
Seattle Department
of Transportation

OPERATIVE NO. ...
APPROVED BY: ...
DATE: ...
SCALE: H 1"=60', V 1"=10' ...

\p\projects\2015\15-0011\15-0011.dwg
 15-0011-10 11/14/15

Jefferson Park / 16th Ave Drainage



Spokane St Viaduct

Seattle City Light - South Service Center

Costco Wholesale

INDUSTRIAL DISTRICT

Bloch Steel Industries

Union Pacific Railroad

Maplewood Playfield

Beacon Food Forest

VA Puget Sound Health Care System

Jefferson Park

Jefferson Park Golf Club

SOUTH SEATTLE

RAINIER VISTA

23

Jefferson Park / 16th Ave Drainage

S Dakota St

16th Ave S

Jefferson Park Greenhouse

NRU HQ

Forestry Trails

Lath House

Golf

Golf

Bowling Club House

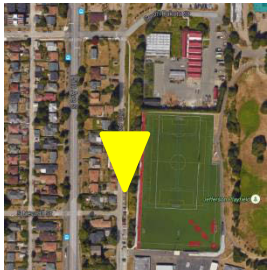
JEFFERSON PARK GOLF COURSE
PARK 44550

— Improvement Location

Jefferson Park / 16th Ave Drainage



Jefferson Park / 16th Ave Drainage



Rainier Beach Playfield



SOUTH
BEACON HILL

Beacon Ave S

Wing Luke
Elementary School

Van Asselt
Elementary School

S Cloverdale St

Beacon Ave S

Martin Luther King Jr Way S

Othello Lightrail Station

RAINIER VALLEY

S Cloverdale St DUNLAP

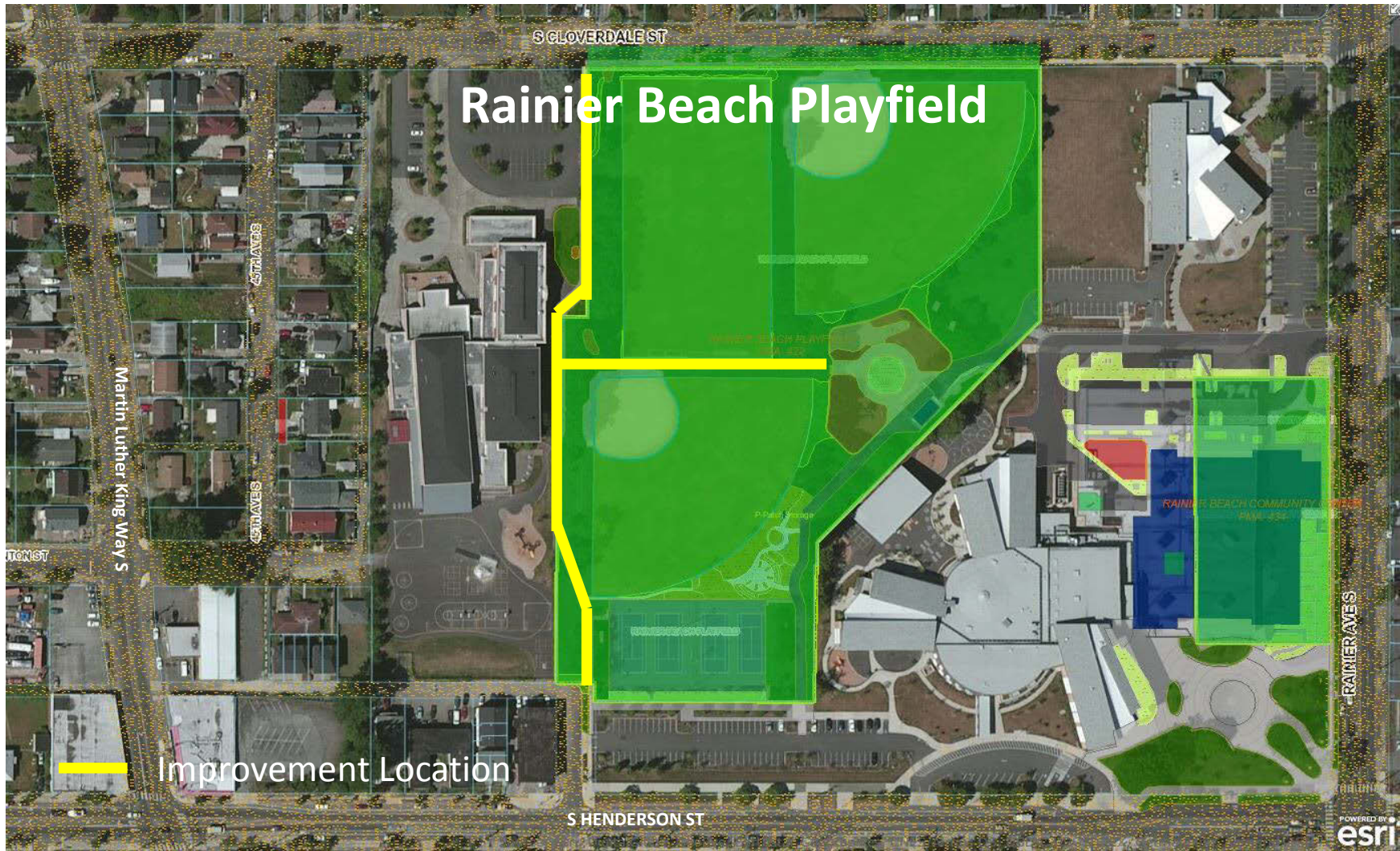
Rainier Beach Pool

S Henderson St

S Cloverdale St

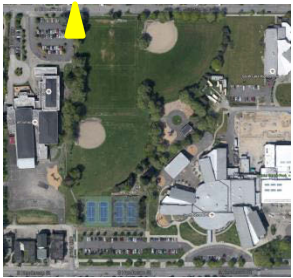
S Henderson

Safeway



Rainier Beach Playfield

Improvement Location



Rainier Beach Playfield Existing Conditions





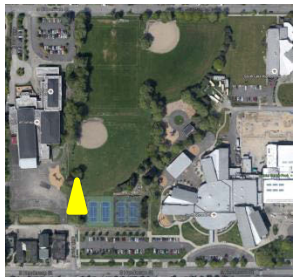
Rainier Beach Playfield Existing Conditions





Rainier Beach Playfield Existing Conditions

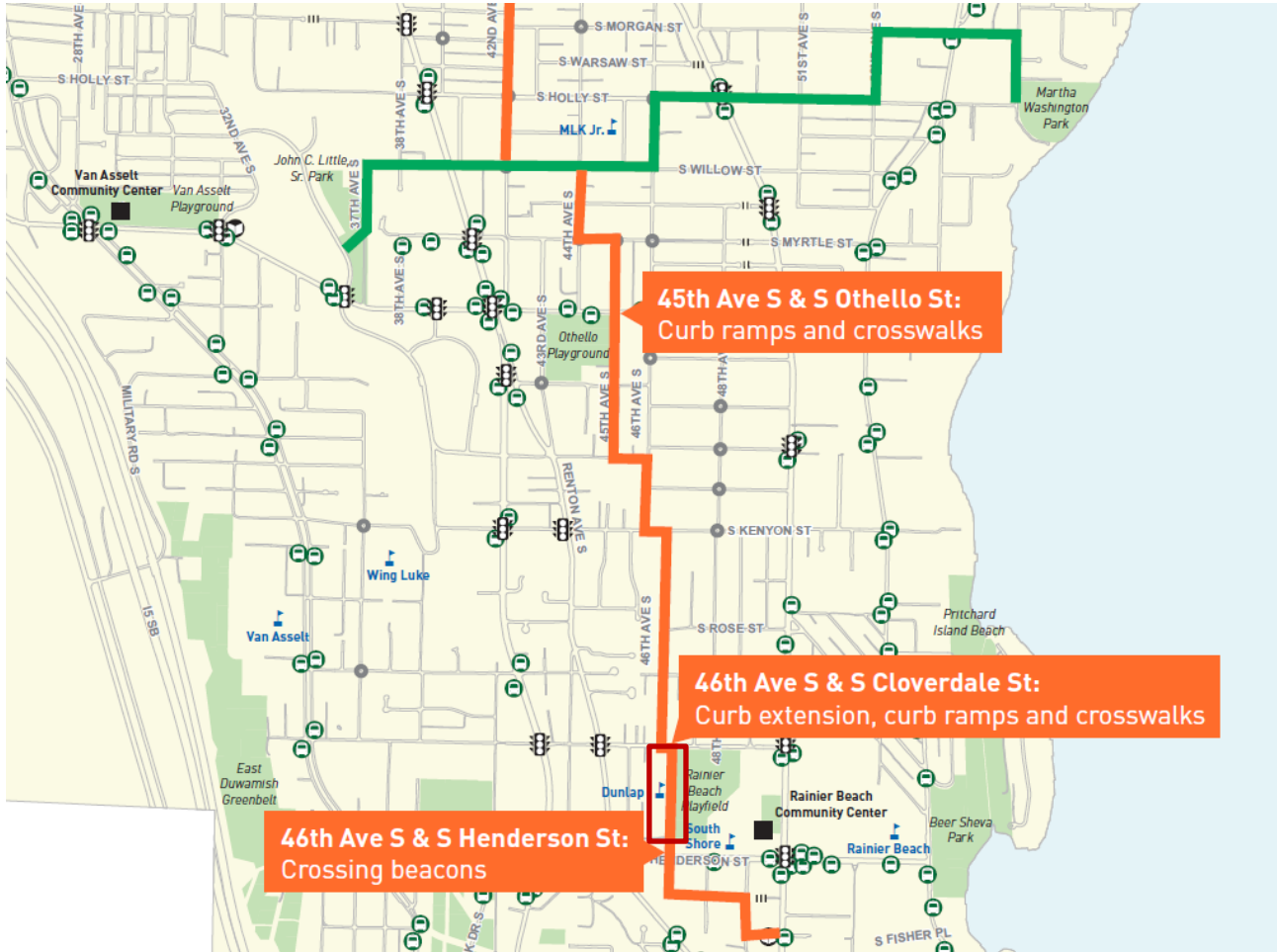




Rainier Beach Playfield Existing Conditions



(SDOT) RAINIER VALLEY NORTH-SOUTH NEIGHBORHOOD GREENWAY PROPOSED ROUTE



LEGEND

- Existing or Planned Neighborhood Greenway
- Draft Most Promising Route
- Safe Routes to School Greenway Spur
- Bus Stop
- Library
- School
- Community Center
- Traffic Signal
- Stairway
- Traffic Circle



*SEATTLE PARKS
AND RECREATION*

Greenways Initiative Additional Projects

SPR Greenways Initiative Capital Improvement Projects for Consideration

Park	Adjacent Greenway	SDOT Project Completion Date	New Council District	SPR Maintenance District	Potential Improvements	Other/Notes
GREENWAYS						
Brighton Playfield	39th Ave S Greenway	2016	2	South East	Improved entry/access at Juneau, remove guard rail	Safe routes to school. Aki Kurose M.S.
Miller Playfield/CC	21st Ave E (CANG)	2015	3	Central East	Curb Ramps, Bike Rack, Sign to CC.	Crosswalks
Garfield Playfield	25 Ave E (CANG)	2015	3	Central East	Entrance/curb cut/wayfinding/parking	
Judkins Park and Playfield	CANG / Central Park Trail	2015	3	South East/South Central	East side curb ramps	Central Greenway / Central Park Trail
Jimi Hendrix	26TH AVE S (CANG Ph 2)	2015	2	South Central	Bike Racks	Current Park Project (Kim)
Martha Washington	S Holly St. Greenway	2016	2	South East	Bike Rack / entry	
Mt. Baker Park	Rainier Valley Greenway	2016	3	South Central	Bike Racks	Playground Project (Jay)
Pratt Park	S King St	2017	3	Central East	Lighting	Central Greenway
Volunteer Park	16th Ave E Greenway	2018	3	Central East	curb/ramp/bike share station	Bike connector
Ravenna Eckstein Park	NE 68th St Greenway	2019	4	Northeast	Bike racks/entry	
Cal Anderson	E Denny Way Greenway	2019	3	Central East		
Othello Park	45th Ave Greenway	2019	2	South East		
Ballard Commons	NW 58th St	completed	6	Northwest	Bike racks/Ramps/entry	
Schmitz Preserve	SW Hinds St	2019+	1	South West	Bike Racks	

SPR Greenways Initiative Capital Improvement Projects for Consideration

Park	Adjacent Greenway	SDOT Project Completion Date	New Council District	SPR Maintenance District	Potential Improvements	Other/Notes
PROTECTED BIKE LANES						
Northacers Park	none (Protected Bike Lane) on 130th		5	Northwest	Entry	
Cowen Park	none (Protected Bike Lane)	completed	4	Northeast	Install sidewalk	
Cowen Park	none (Protected Bike Lane)	completed	4	Northeast	Pave access road	
Denny Park	Dexter Ave (Protected Bike Lane)	completed	7	RPSO	Bike Parking, Bulb out	
Dr. Jose Rizal Park	none (Protected Bike Lane)		2	South Central	SE corner bike racks	
Woodland Park	N 50th St (Protected Bike Lane)/ Woodland Park Ave N Greenway)		6	Northwest	Widen Sidewalk/Curb cuts	
Pigeon Point Park	none		1	South West	Racks/Small Connector	
Powell Barnett	MLK Protected Bike Lane	2019	3	Central East	Bike racks	
MUTLI-USE TRAILS						
Gas Works Park	none (Burke-Gilman Trail)	Completed	4	Northcentral	Bike racks/Connection through parking lot	
Golden Gardens Park	none (Burke-Gilman Trail)	Completed	6	Northwest	Improve connection from end of trail to park through parking lot to trail - widen	



Mike Schwindeller

Capital Projects Coordinator, Assistant
Seattle Parks and Recreation

(206) 615-1165

mike.schwindeller@seattle.gov