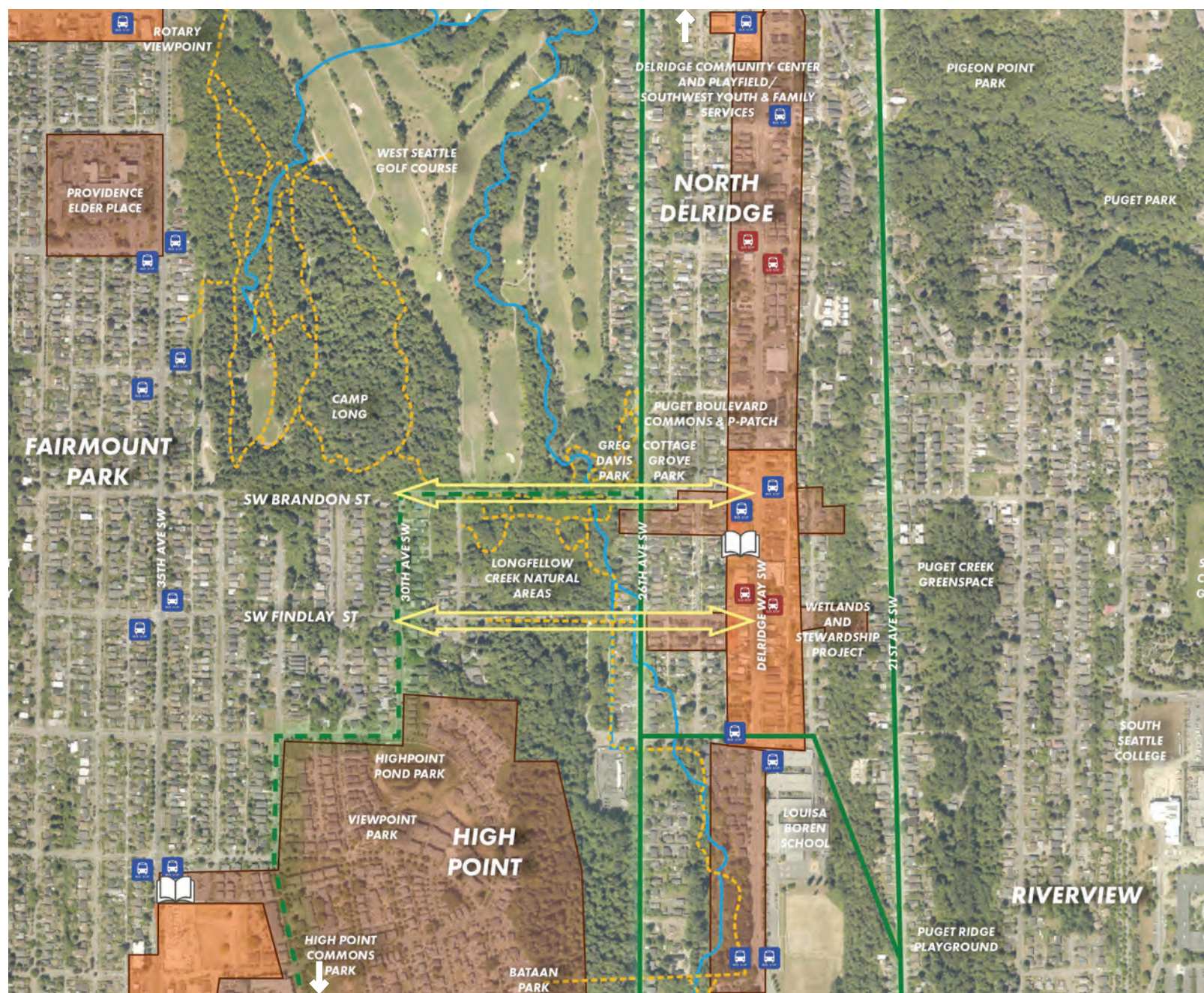


SITE CONTEXT



LEGEND:

- Mixed Use/Commercial
- High Density Housing
- Library
- Bus Stop
- Future Rapid Ride H-Line Bus Stop
- Long Fellow Creek and Tributaries
- Existing Trails
- Neighborhood Green Way
- Proposed Neighborhood Green Way
- Areas of Focus at Brandon and Findlay Streets



SW Brandon Street and SW Findlay Street Trail Improvements

AREAS OF FOCUS



GOALS

- Improve trails between the High Point and Delridge neighborhoods along SW Brandon and Findlay Streets.
- Provide wayfinding and other enhancements to improve access to future RapidRide H bus line along Delridge.
- Enhance trail entries to Camp Long and natural areas along Longfellow Creek to be more open and welcoming to the public.

TIMELINE

- December 2019 – Community Engagement Phase I: Inventory & Analysis
- Early 2020 – Community Engagement Phase II: Schematic Design
- Early Spring 2020 – Final Schematic Design & Report

SW Brandon Street and SW Findlay Street Trail Improvements

