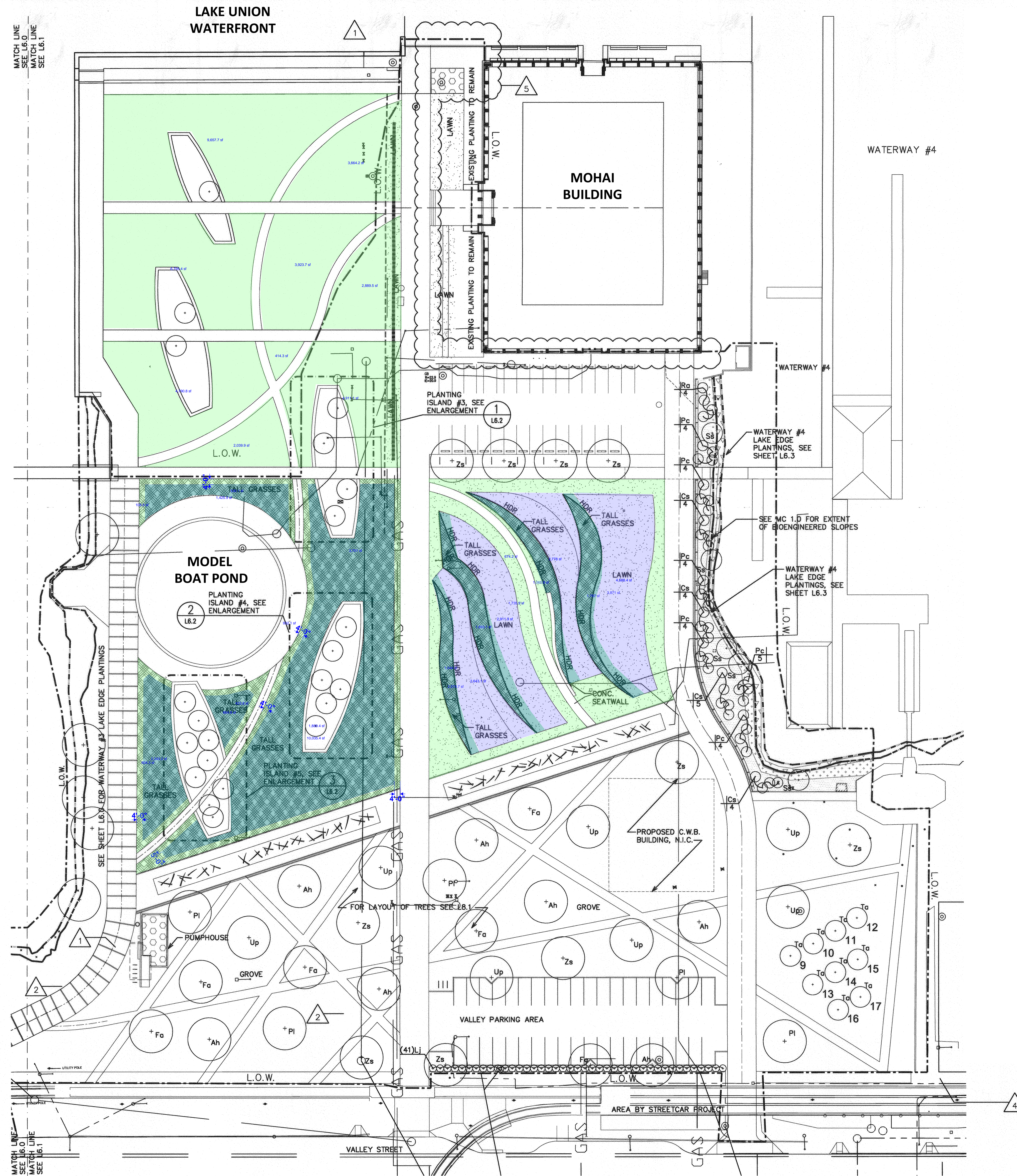


PLANTING LEGEND

- 3" HT MOWN LAWN 52,631 SF
- 6" HT MOWN LAWN 23,840 SF
- 3"-5" HT ECO-LAWN 12,901 SF

PLANTING NOTES:

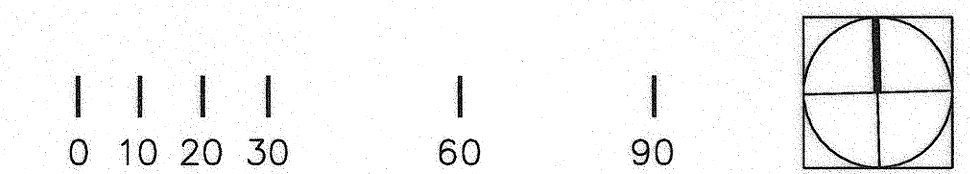
1. INSTALL PROTIME PT 301 WATER SMARTER TALL FESCUE BLEND W/HIGH ENDOPHYTE COUNT OR EQUIVALENT FOR 3" HT & 6" HT MOWN LAWN HYDROSEED MIX.
TOTAL SEEDED AREA: 76,471 SF
2. FOR LAWN AREAS TO BE MOWN AT 6" HT, ADD 5% DUTCH WHITE CLOVER AND 5% STRAWBERRY CLOVER TO OVERALL MIX OF TALL FESCUE BLEND.
3. INSTALL PROTIME PT 755 FLEUR DE LAWN OR EQUIVALENT FOR FLOWERING ECO-LAWN HYDROSEED BLEND. PER SUPPLIER RECOMMENDATIONS, MOW EVERY 4 TO 6 WEEKS TO KEEP SPECIES MIX IN BALANCE.
TOTAL SEEDED AREA: 12,901 SF
4. MAINTAIN 4'-0" MIN WIDTH, 3" HT MOWN EDGE AT ALL LAWN AREAS MAINTAINED AT 6" HT.
5. AMEND SOILS PER TOTAL NUTRITION SYSTEM (TNS) SOIL TESTING LAB RECOMMENDATIONS & REPORT DATED JULY 26, 2023. SOIL pH IS LOW (5.9) FOR TURF GRASSES. AMEND PER SOIL LAB RECOMMENDATIONS TO REACH pH WITHIN RANGE OF 6.5-7.0.



LAWN RENOVATION AT MOHAI LAKE UNION PARK

SEATTLE PARKS & RECREATION
 PLANNING & CAPITAL DEVELOPMENT BRANCH
 ENGINEERING, DESIGN & TECHNICAL SERVICES UNIT
 Amy Lindemuth, Sr. Landscape Architect 206.445.8817

08.31.2023



C:\Users\jama\OneDrive\Documents\Projects\2023\23-08-11\23-08-11.dwg (11-20-11 10:43:00AM) Printed by jama