

City of Seattle Duwamish Valley Sea Level Rise Adaptation Strategy
June 3rd 2023 Open House – Community Feedback Notes

At the June 3rd Multilingual Community Open House, the SLR team presented basic flooding and SLR information, three main strategies to adapt to SLR (Protect, Accommodate, and Retreat), and ideas about how multiple benefits could be incorporated in design.

After a brief presentation, we asked community members to share their ideas or opportunities they see within each potential strategy for adaptation: Protect, Accommodate, and Retreat. We also asked for any place-specific input or ideas on a map board. Below are key takeaways from the Open House. See the end of this document for transcribed comments from both boards, and images of each station.

Opportunities & Ideas Board Feedback Summary

Overall, community members had the most ideas about how to include multiple benefits in the “Accommodate” and “Protect” strategies. In the Protect category, feedback focused on community-serving and public uses for land that is protected by SLR adaptation infrastructure, as well as ensuring public access where space is constrained. In the Accommodate category, participants had creative ideas for incorporating green space, ecology, and recreation. A few comments noted ideas around “Retreat,” including preventing displacement and restoring historic ecology. Finally, there were many general comments that could apply to all strategies or have implications beyond the design of SLR adaptation infrastructure. These include desires for seating, views, public access and amenities, cultural representation, and tree canopy. Broader comments noted the importance of including King County areas of South Park in adaptation planning; and ensuring the river is cleaned up.

Map Board Feedback Summary

Map comments were focused mostly on Georgetown, with requests for greater walkability, bikeability, and river access.

Reflection & Lessons Learned

- Overall, we had robust participation from youth, many good conversations, and heard many creative ideas. It seems like a combination of Protect and Accommodate strategies are generally supported by community feedback.
- The volume of information shared might have benefited from more time and smaller group discussions to absorb, especially with the need for interpretation. SLR adaptation is a new type of project/concept in the neighborhoods, and some community members were more able to provide ideas and feedback than others in the time available. One community member asked if there was a feedback form or comment card that they could fill out and provide later.
- The subject of trust and responsiveness to community needs came up in some conversations. Some community members are uncertain if this project will truly lead to community benefits, or if it will happen in time to stop people from being further displaced by flooding. Conversations also underscored the importance of connecting with existing community-based efforts and projects.

Opportunities & Ideas Board Comments

PROTECT	ACCOMMODATE	RETREAT	GENERAL / OTHER
<ul style="list-style-type: none"> • Holistically protect land for multilingual job training, community projects, and youth opportunities. • Make concrete river defenses to prevent the water destroying the community. • Cultural/soccer museum and community generates income • Green spaces ☺ • Bike paths on areas if you do have to build berms 	<ul style="list-style-type: none"> • Create more flood water storage habitat areas. • River gardens • More playground and greener areas • Soccer field • Have an open space and elevate further out • Houses on stilts or raised? • Habitat, culture, park, public access • Splash park for kids • Rain gardens • Art and green spaces • Easy and safe access to water/river activities • Elevated basketball courts for the community • Pools within community to learn how to swim • Restore instead of destroy! • Space for outdoor preschools and play • Make space for nature and animals!! • Create a channel for water to flood • Safe space for walking and social activities • Flood storage tanks – use for grey water / toilets / etc. 	<ul style="list-style-type: none"> • Local affordable housing for any relocation • Bring back historic river • For storm events, having networks of support in place for people with disabilities 	<ul style="list-style-type: none"> • Benches to sit and look at the river • Fix sewer system while adapting • Have companies control their pipes and have them release water at the lowest tide. • Glass path / visual connections to river life • Water-flooding fountain • Benches and somewhere to walk or jog • River to be clean • Native planting • Local culture representation (not just industrial history/culture) • Incorporate Sliver into planning because we are also South Park ← YES! • Tree-cutting moratorium – tree equity & green spaces. Urgency about gentrification/affordability – developers cutting trees & slapping together un-affordable homes faster than this project

Map Board Comments

- 1st Ave Bridge
 - Keeping bridge deck clean of litter
- Boeing Field
 - Get rid of Boeing!
 - Keep Boeing, get rid of the river and south park won't flood again
- Georgetown around E Marginal Way and 8th Ave. S.
 - Better access to get to river
 - Walking infrastructure
 - Actual bike path along E. Marg. Way – not just bike symbols painted on the street
 - More river access + greenspace in Georgetown
 - Easier access to south side of Seattle – walkable infrastructure
- Georgetown south of South Park Bridge
 - River access for community
 - People + Planet Centered Restoration @ Jorgensen Forge
- South Park around Dallas Ave.
 - Can we save Dallas Ave trees?

COASTAL FLOODING & SEA LEVEL RISE (SLR)

PROJECT SCHEDULE

THE DUWAMISH WATERSHED

WHAT CAUSES COASTAL FLOODING IN SOUTH PARK?

URBAN FLOODING IN GEORGETOWN

2022: DECEMBER FLOOD ELEVATION

Sandbag Elevation: up to about 15"
 Flood Elevation: about 12-13"
 Ground Elevation: about 12'3"
 Average Daily High Tide: about 9'

2050: WITH ONE FOOT OF SEA LEVEL RISE....

2100: WITH THREE FEET OF SEA LEVEL RISE....

FLOODS UP TO 3x PER YEAR IN 2050

FLOODS UP TO 3x PER YEAR IN 2100

SEA

SEA LE
shore

- Supp
- Prote
- infras
- Provic
- Promc
- Priorit

PROTEC

Opport

INDUSTRY
PROTECT
FROM TIDES
OR STRANDE
D. YOUTHT
REALIZING

Fix Sewer
system
while
adapting

Have Contract
already signed
to protect in
District the
Community.

SEA LEVEL RISE ADAPTATION STRATEGIES

SEA LEVEL RISE ADAPTATION means redesigning the shoreline area to address flooding in a way that...

- Supports and uplifts affected communities
- **Protects** and **accommodates** with adaptive and creative infrastructure
- Provides equitable benefits for residents and businesses
- Promotes racial equity and a thriving economy
- Prioritizes feasible and nature-based solutions



Opportunities & Ideas:

PROTECT

- HOISTONALLY PROTECT LAND FOR JOB TRAINING OR COMMUNITY USE OR YOUTH DEVELOPMENT OPPORTUNITIES!
- Fix sewer system while adapting
- More concrete raised structures to protect the community
- Create more flood water storage habitat areas
- Take part in an effort for you all to know to build farms
- Cultural/Museum + Community gardens + income
- Green Spaces
- Blanket habitat for the community
- pools with community to learn how to swim

ACCOMMODATE

- Benches to sit and look at river
- River Gardens
- More playground and greener areas
- Have an open space and elevate further out
- Soccer field
- Habitat, culture, park Public access
- Splash park for kids
- Local Culture representation (not just industry)
- Pain Gardens
- Create a channel for water to flood for storm events, have networks of support in place to prevent
- Make space for nature and animals!
- Restore instead of Destroy!
- Space for outdoor preschools + play

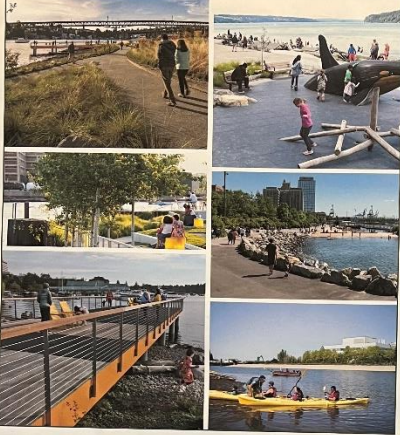
RETREAT

- Native Planting
- Flood storage tanks - use for grey water / toilets, etc.
- Bring back historic river
- Local housing for other relocation
- Integrate Shovel into planning because we don't also have that test?
- Use existing structures used there before they were replaced to improve cultural significance and sustainability - historical buildings are not replaced, however, older structures are preserved

Station 2: SLR Adaptation Strategies with community input on sticky notes

OPPORTUNITIES FOR MULTIPLE BENEFITS

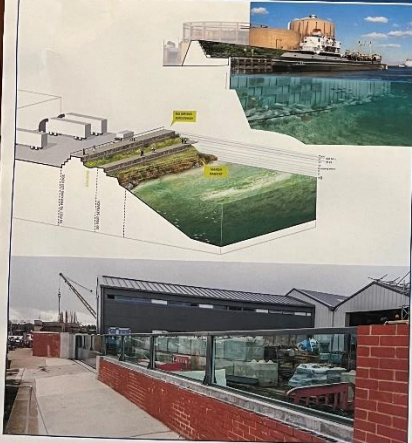
Public Green Space and River Access



Community Gathering and Culture



Continuing Industrial & Maritime Uses



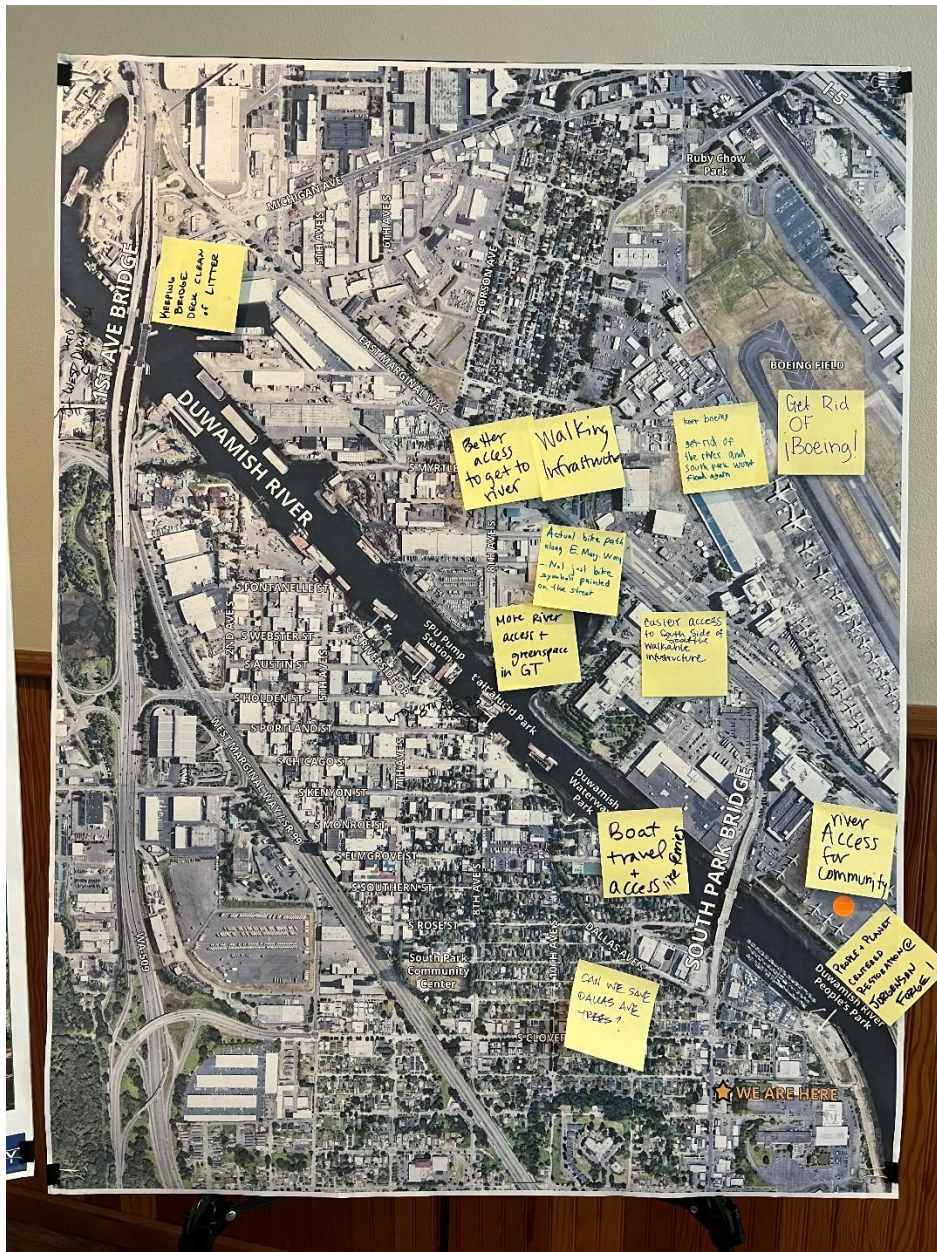
Habitat and Tree Planting



Seattle

WALKER MACY

Station 3: Opportunities for Multiple Benefits



Station 4: Blank Map of Study Area with community input on sticky notes