

One Seattle Comprehensive Plan

Updating the Displacement Risk Index

What is the Displacement Risk Index?

As part of the current Comprehensive Plan, Seattle 2035, the City produced the [Growth and Equity Analysis](#), which includes a Displacement Risk Index that identifies areas of Seattle where displacement of people of color, low-income people, renters, and other populations susceptible to displacement may be more likely. You can view the current Displacement Risk Index in this [online map](#).

The Displacement Risk Index provides a longer-term view of displacement risk based on neighborhood characteristics like the presence of vulnerable populations and amenities that tend to increase real estate demand. Since its creation in 2016, the City and community members have used and referred to the Displacement Risk Index to inform planning, land use, housing, and community development policy and investment decisions. Seattle's Equitable Development Initiative focuses its investments in areas and communities facing displacement pressure, as identified in part by this index.

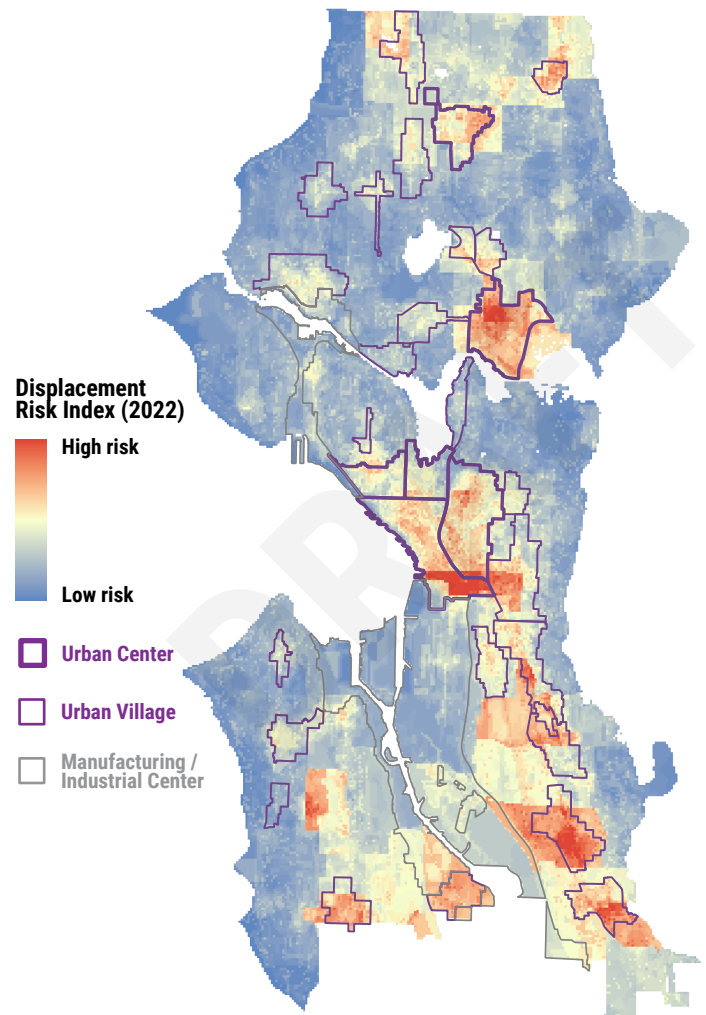
Why are we updating it?

The Displacement Risk Index is one way we will evaluate likely outcomes of different growth scenarios and shape an eventual growth strategy that addresses the displacement pressures many community members have experienced and are experiencing today. To do that, we've updated the index with more recent demographic and socioeconomic data; the latest measures of rent and redevelopment potential; and current information about transit and other neighborhood assets.

We are also exploring how to improve the methodology behind index. Improvements help us more accurately identify populations who are more vulnerable to displacement or incorporate data like income-restricted affordable housing sites as a factor that can help mitigate displacement pressure. OPCD has also developed additional [indicators](#) of heightened displacement risk that could be appropriate for inclusion in the index.

As part of the Environmental Impact Statement (EIS) process, we will share a draft version of our updated Displacement Risk Index and explore how and why it has changed since 2016. We will include information about how we plan to use this analysis to help shape the City's vision for where and how we should plan for more equitable growth.

Preliminary Displacement Risk Index update



Send questions & comments to:
nicolas.welch@seattle.gov



For more information visit:
seattle.gov/OPCD/one-seattle-plan