

UNIVERSITY DISTRICT OPEN SPACE FORUM #3

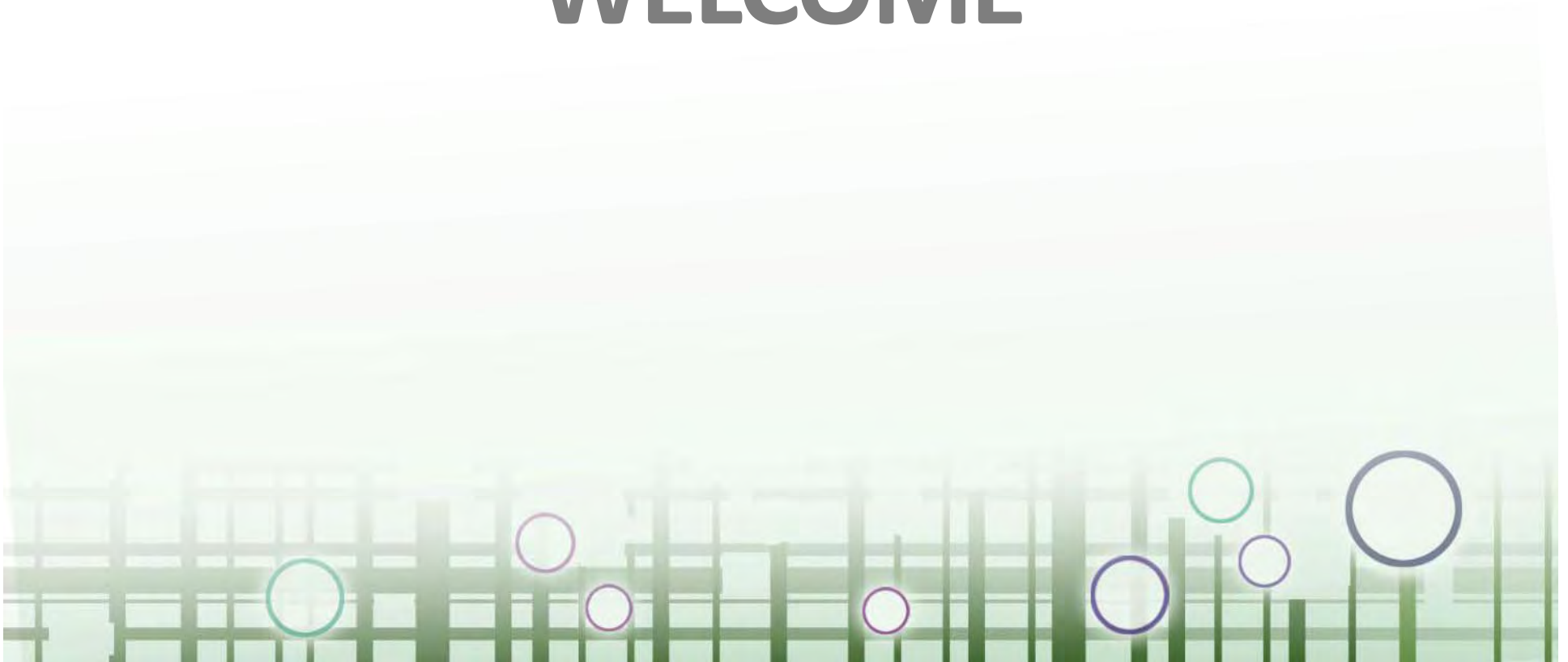
UNIVERSITY DISTRICT OPEN SPACE FORUM

A community conversation



UNIVERSITY DISTRICT OPEN SPACE FORUM #3

WELCOME

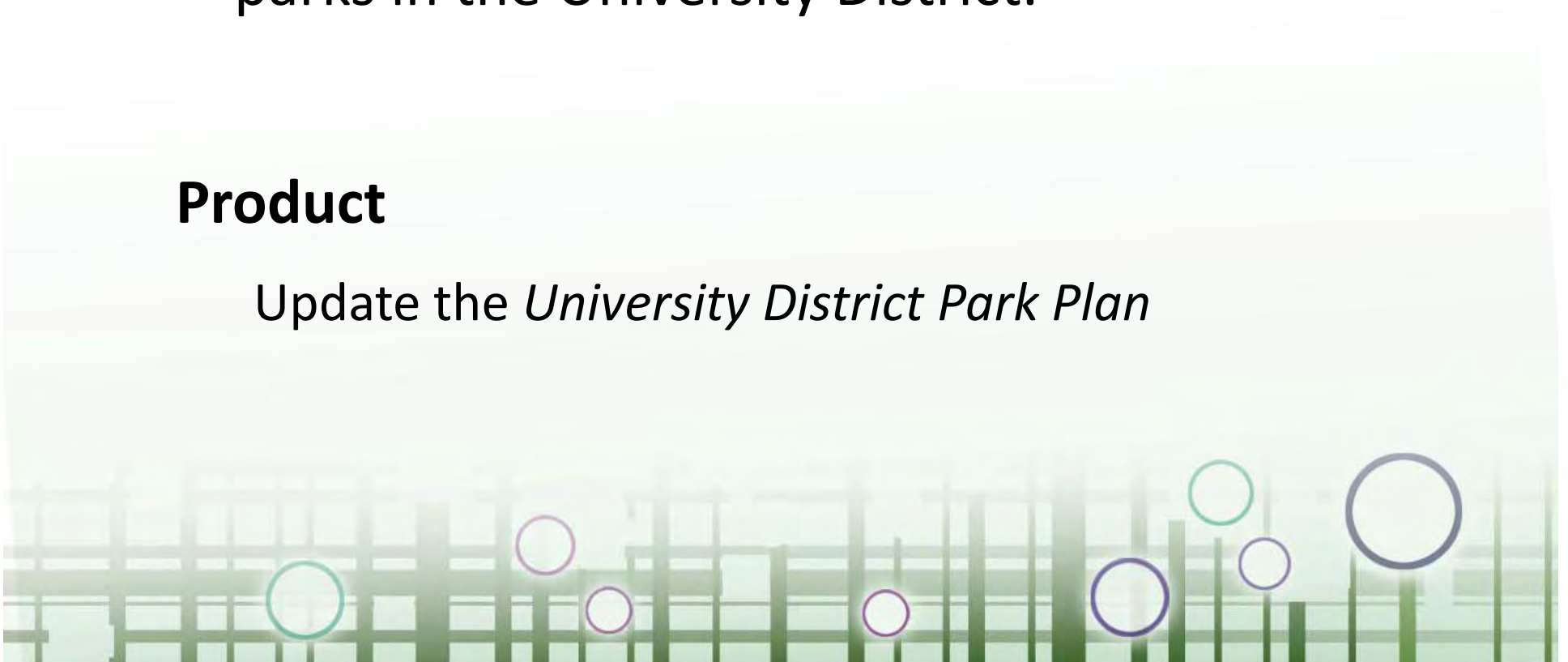


Project Goal

Create a community-owned plan for providing & improving public spaces & parks in the University District.

Product

Update the *University District Park Plan*



UNIVERSITY DISTRICT OPEN SPACE FORUM #3

Roles

Community members

U District Square

University District Partnership (UDP)

Steering Group

Dep't of Planning & Development (DPD)

Parks & Recreation

University of Washington

Consultants:

Steering Group Members:

- Rebecca Barnes, University Architect, Capital & Campus Planning
- Doug Campbell, Business Owner
- Cory Crocker, University District Square & Resident
- Marty Curry, University of Washington Urban Planning instructor
- Theresa Doherty, University of Washington Regional & Community Relations
- Jeanette Henderson, University of Washington Real Estate
- Kristine Kenney, University of Washington Landscape Architect
- Dave LaClergue, City of Seattle Department of Planning & Development
- Dorothy Lengyel, University District Parking Associates & Resident
- Elizabeth McCoury, University District Partnership (CEO)
- Chip Nevins, Seattle Parks & Recreation
- Barbara Quinn, University Park Community Club
- Ruedi Risler, University Park Community Club
- Scott Soules, Property Owner, University District Parking Associates
- Roger Wagoner, Resident
- Steve Wilkins, University District Community Council & Resident



UNIVERSITY DISTRICT OPEN SPACE FORUM #3

Project Timetable



Goal of Tonight

Update of work-to-date & invite public comments regarding:

- Recommended elements
- Implementation strategies



Agenda

Findings

Recommended actions

- Activate existing & planned parks
- Pocket parks
- UW campus edge
- East-west pedestrian connections
- North-south green spine
- Publicly-owned central square

Discussion

Summary & closing remarks



UNIVERSITY DISTRICT OPEN SPACE FORUM #3

FINDINGS FROM COMMUNITY MEETINGS



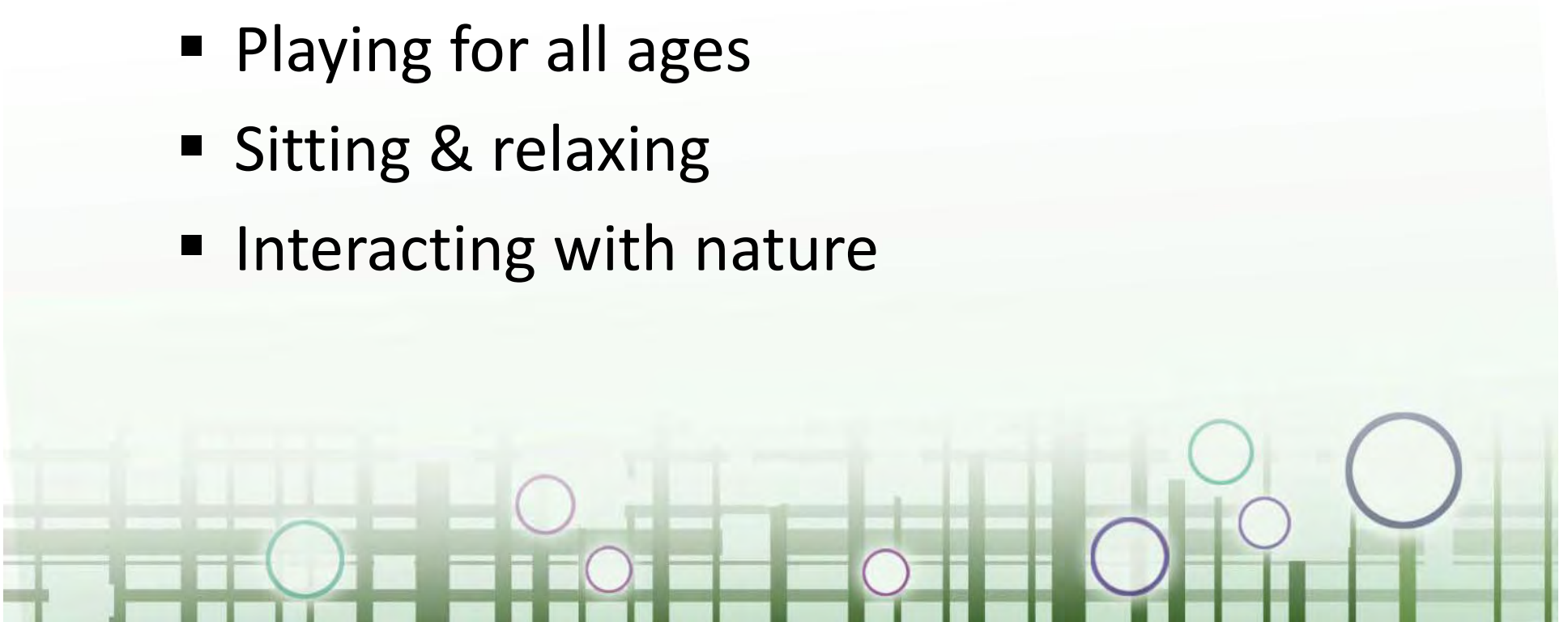
Principles or Values

- Inclusiveness
- Safety
- Neighborhood identity
- Livability
- Connectivity
- Connection to nature
- Variety of spaces



Functions & Activities

- Socializing & meeting people
- Eating & drinking
- Musical performances & outdoor movies
- Playing for all ages
- Sitting & relaxing
- Interacting with nature



Key Elements for Urban Parks

- Collaborative approach to needs assessment, design, & management
- Importance of location & size
- Accessibility to primary users
- Visibility from streets & adjacent uses
- Quality of design & construction
- Elevated level of programming, maintenance, & security



UNIVERSITY DISTRICT OPEN SPACE FORUM - COMMUNITY MEETING #2

Work Session

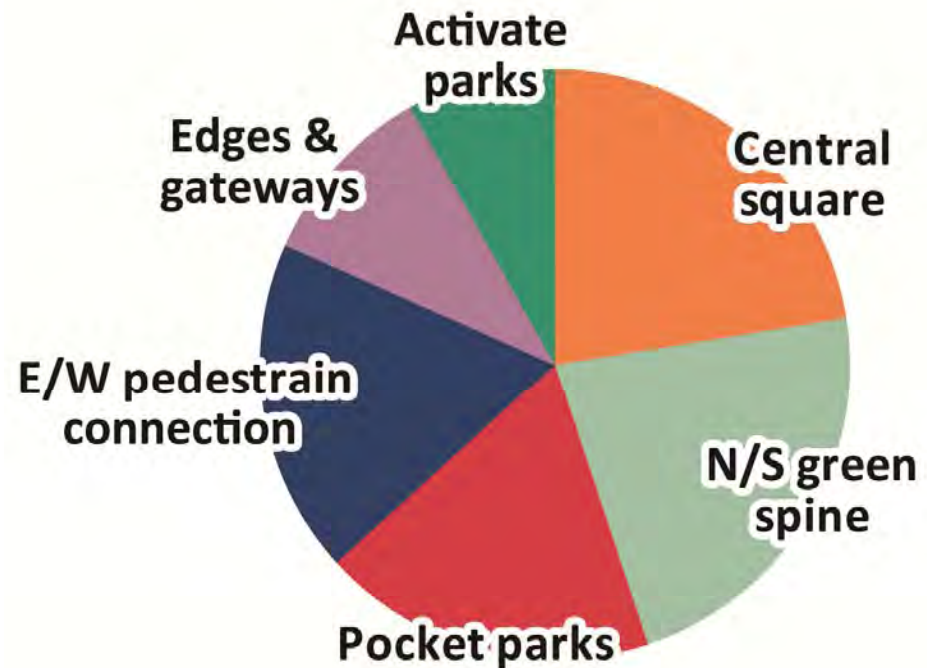


Work Session



- 8 tables identified location & types of open space on a map
- Representatives shared top 3 priorities
- Given a chance to adjust based on other groups' ideas

Work Session Results



RECOMMENDATIONS



6 Recommendations (in no particular order)

- Activate existing & planned parks

CHIP NEVINS, SEATTLE PARKS & REC

- Pocket parks (part of new development)

JOHN OWEN, MAKERS

- UW campus edge

THERESA DOHERTY, UW REGIONAL & COMMUNITY RELATIONS

- E/W pedestrian connections

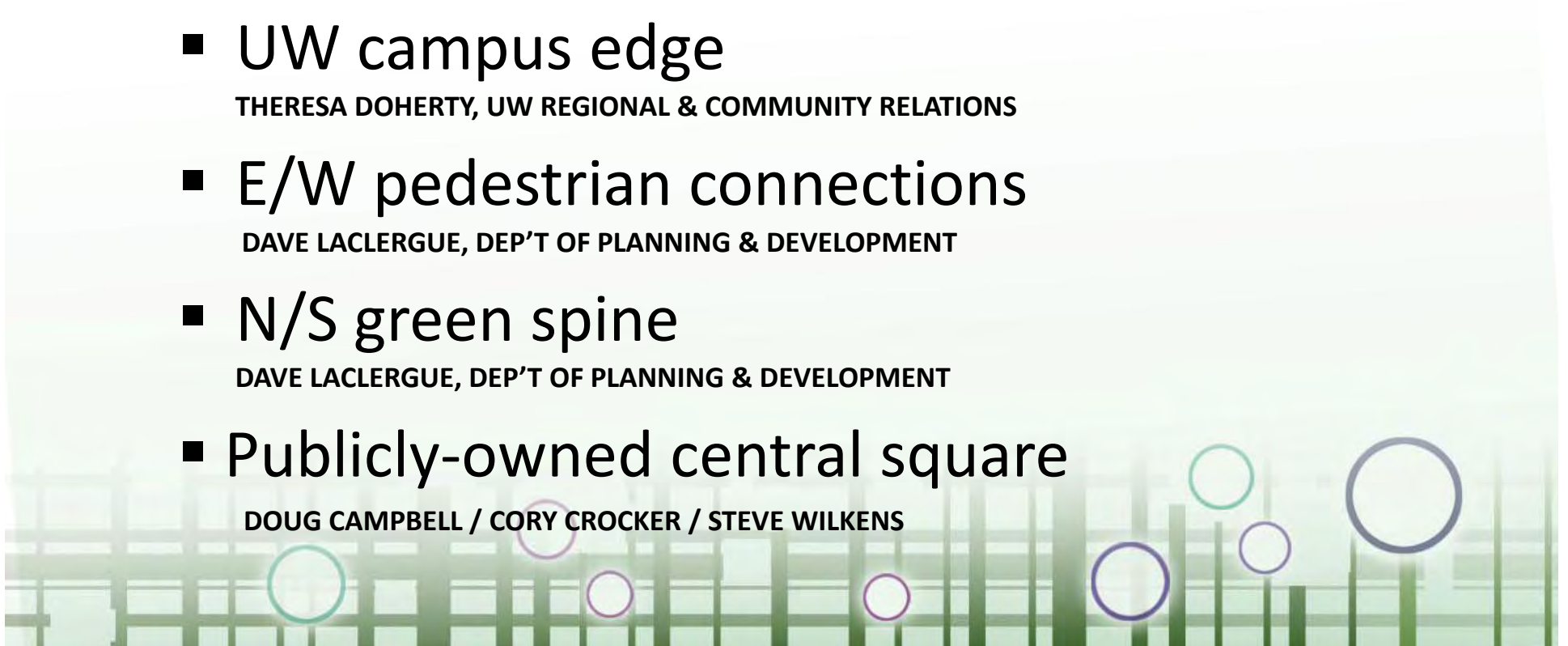
DAVE LACLERGUE, DEP'T OF PLANNING & DEVELOPMENT

- N/S green spine

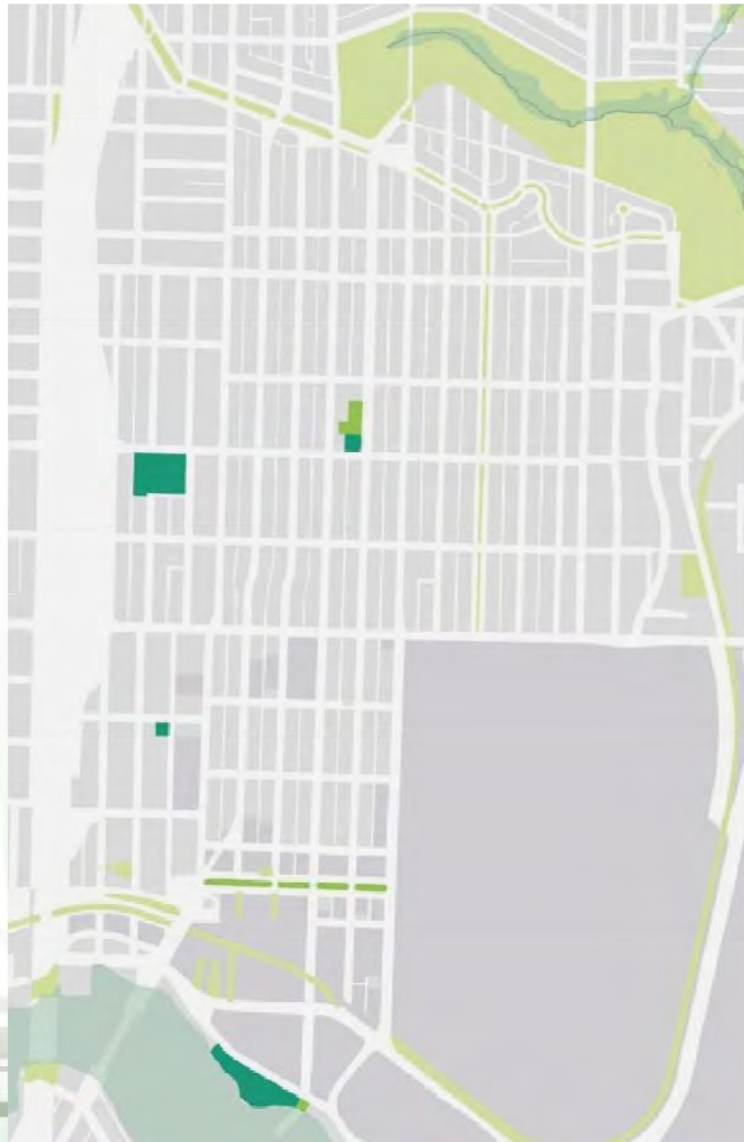
DAVE LACLERGUE, DEP'T OF PLANNING & DEVELOPMENT

- Publicly-owned central square

DOUG CAMPBELL / CORY CROCKER / STEVE WILKENS



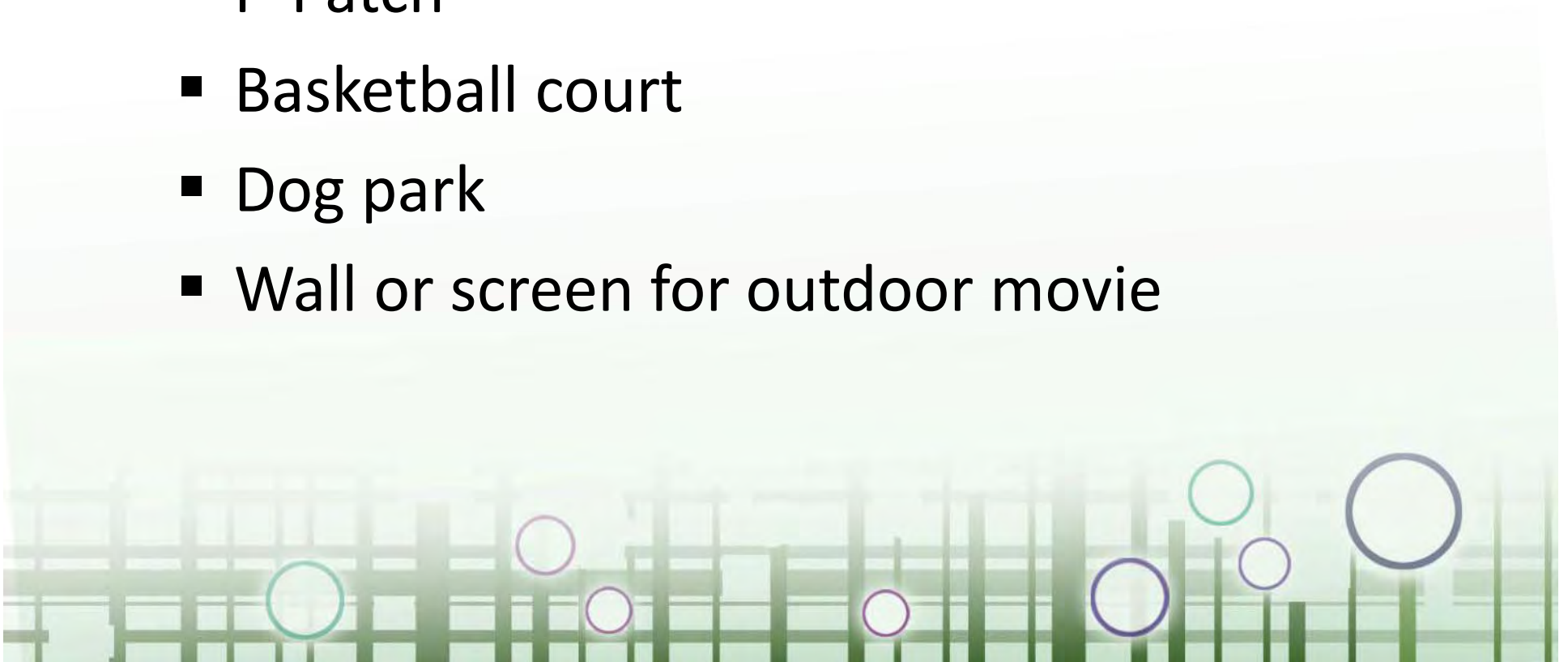
ACTIVATE EXISTING & PLANNED PARKS



- Improvements & additional uses to all existing & planned parks.

Potential Design Elements

- Climbing wall
- Skateboard park
- P-Patch
- Basketball court
- Dog park
- Wall or screen for outdoor movie



UNIVERSITY DISTRICT OPEN SPACE FORUM #3

*Activate Existing
& Planned Parks*

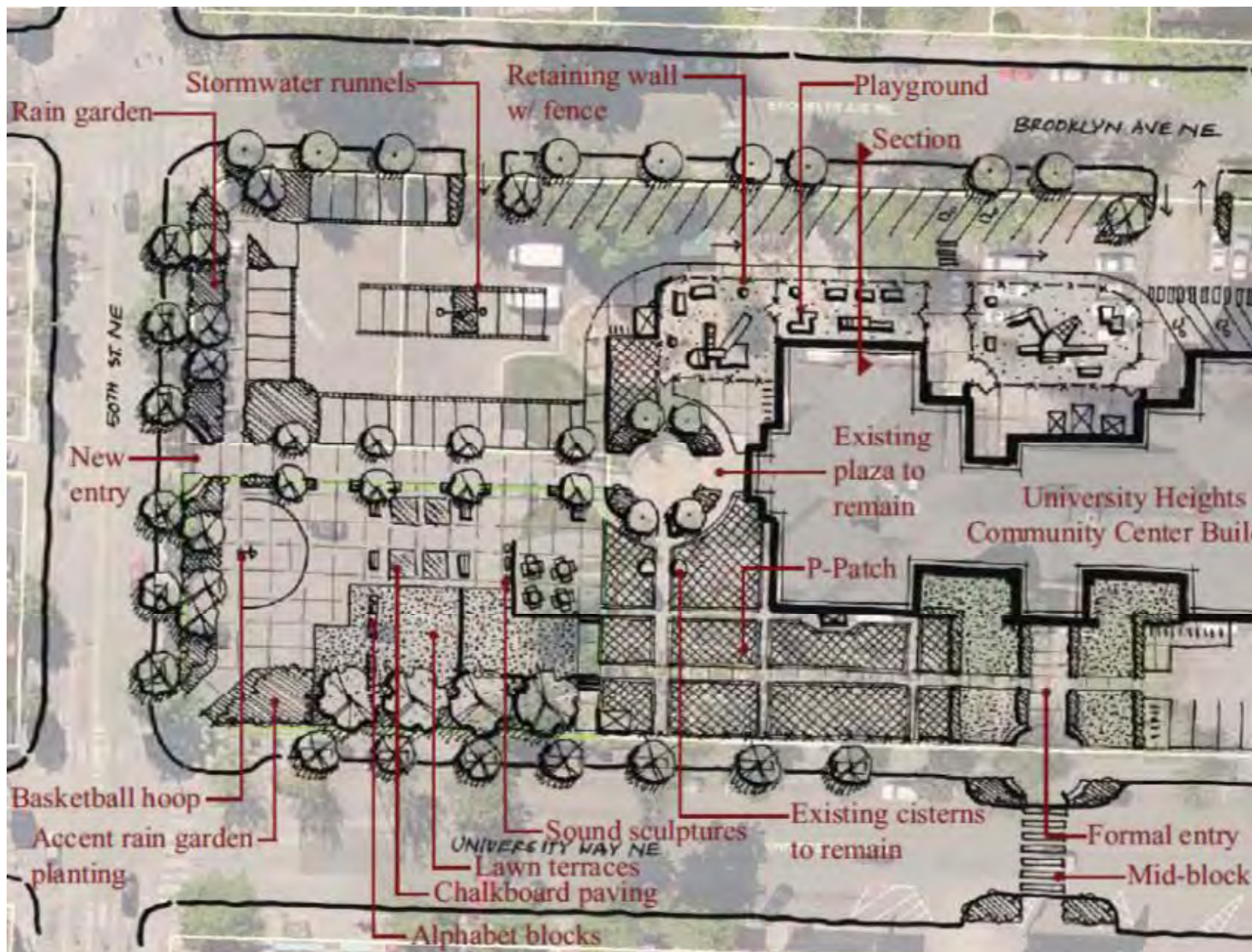
Christie Park Enhancement



UNIVERSITY DISTRICT OPEN SPACE FORUM #3

*Activate Existing
& Planned Parks*

University Heights Expansion



UNIVERSITY DISTRICT OPEN SPACE FORUM #3

*Activate Existing
& Planned Parks*

Waterfront Park Expansion



Implementation

COMMUNITY ACTIONS

- Develop a culture of stewardship, programming, & activation
- Participate in development of planned parks

CITY ACTIONS

- Continue to invest & fund planned parks



POCKET PARKS

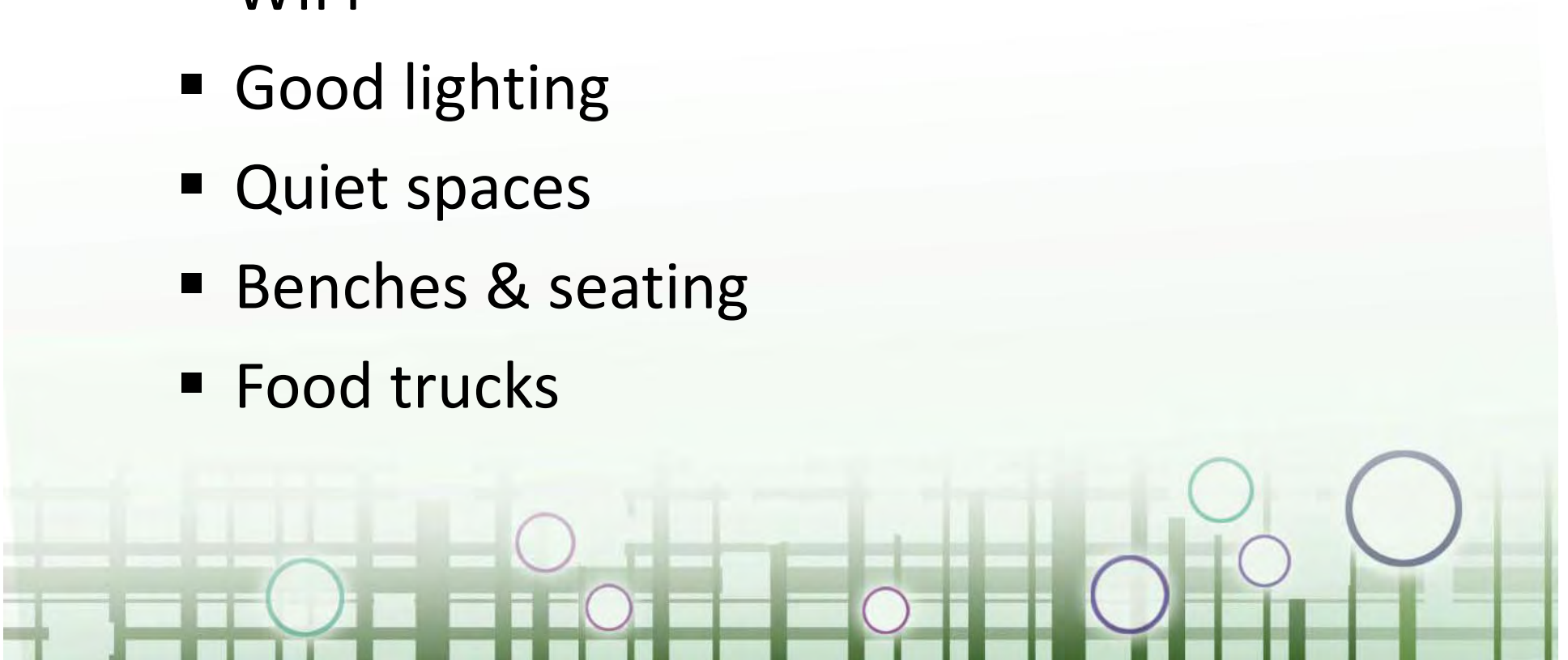


- Small spaces that activate streets in the U District.
- Open space within a 5-minute walk for residents north of NE 50th St.

NOTE: For illustrative purposes only. The locations shown do not necessarily reflect actual locations for pocket parks.

Potential Design Elements

- Café seating & picnic tables
- Small children's playground
- WIFI
- Good lighting
- Quiet spaces
- Benches & seating
- Food trucks



UNIVERSITY DISTRICT OPEN SPACE FORUM #3

Pocket Parks

Privately-Owned Plaza



UNIVERSITY DISTRICT OPEN SPACE FORUM #3

Pocket Parks

Privately-Owned Plaza



UNIVERSITY DISTRICT OPEN SPACE FORUM #3

Pocket Parks

Privately-Owned Plaza



UNIVERSITY DISTRICT OPEN SPACE FORUM #3

Residential Rooftop Amenity



UNIVERSITY DISTRICT OPEN SPACE FORUM #3

Pocket Parks

Residential Setbacks & Ecology



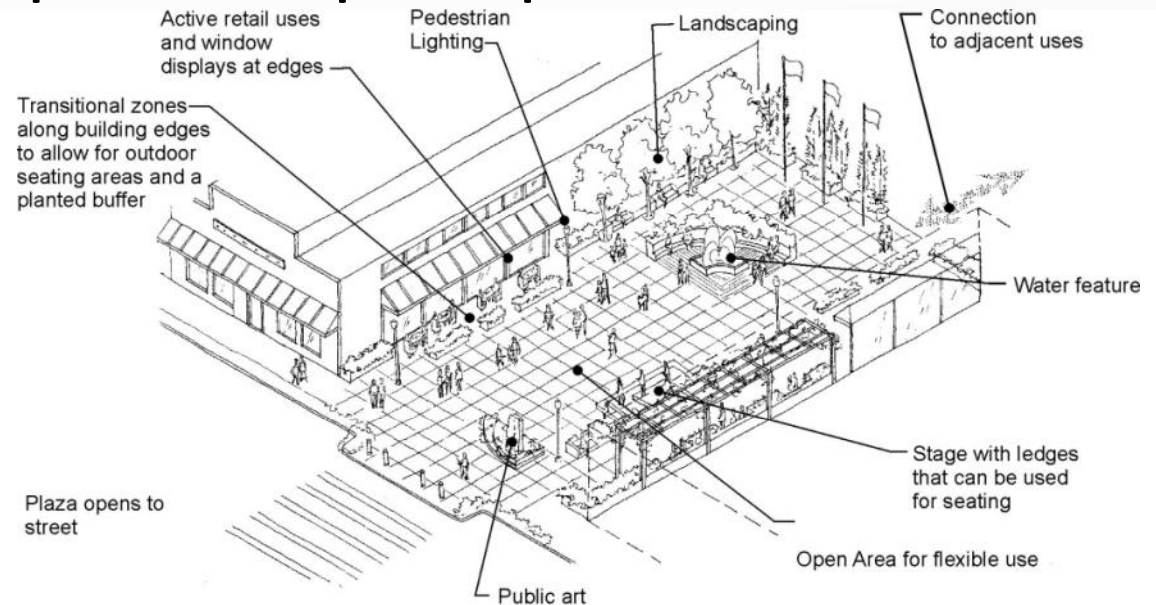
Implementation

COMMUNITY ACTIONS

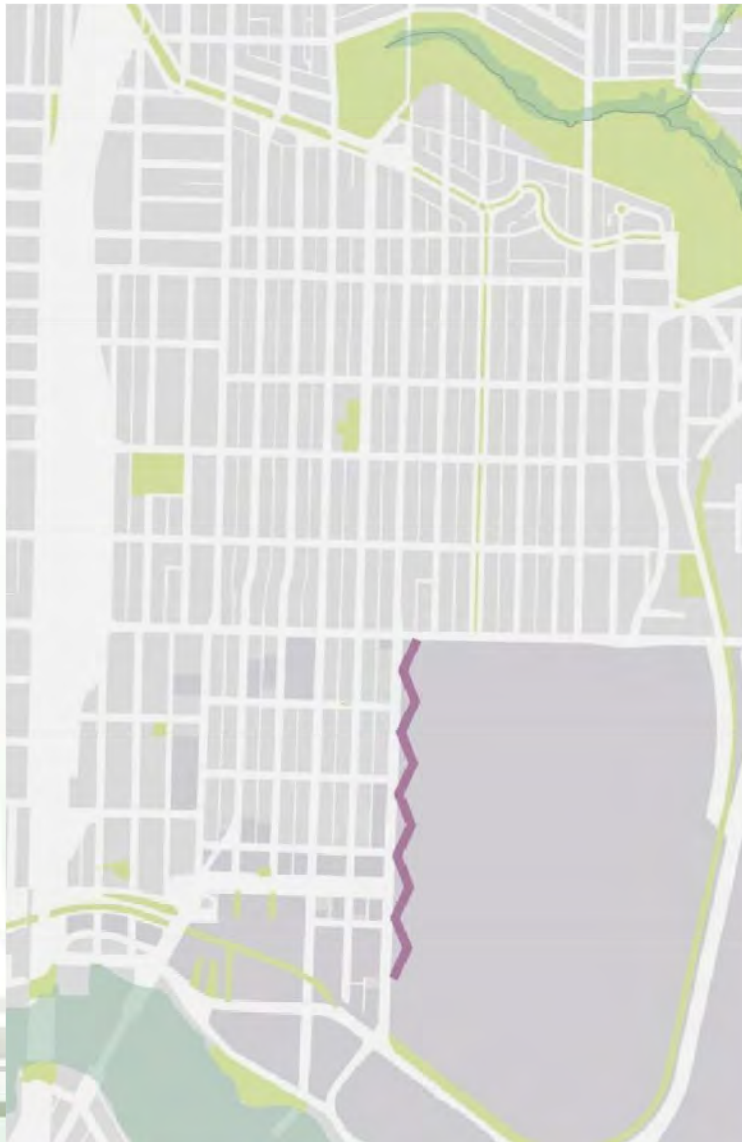
- Review City's draft design guidelines

CITY ACTIONS

- Establish requirements & design guidelines for private open space



UW CAMPUS EDGE



- Better integration with UW open spaces.
- Celebrate entrances into the U District.

UNIVERSITY DISTRICT OPEN SPACE FORUM #3

UW Campus Edge

15th Ave NE



BURKE MUSEUM PARKING

Currently the UW has a very subdued presence at this corner: a veil of woodland faces 15th Ave NE, partially obscuring a wall that lifts the campus landscape from the sidewalk, providing level ground for a parking lot between NE 45th and NE 43rd.

43rd STREET CONNECTION

This pedestrian entrance onto campus leads to the key intersection between Memorial Way and Stevens Way. The importance of this entrance will be transformed by the light rail transit station currently under construction.

PARRINGTON LAWN THRESHOLD

After the wooded edge along the Law School, Parrington opens up into a canopied lawn. Except for where the lawn slopes down toward 42nd, most of this landscape is elevated above street level and so the street side experience is dominated by a concrete wall.

41st STREET CONNECTION

The wide vehicular entry for the Central Parking Garage, along with the high walls that line the sidewalk, obscures the sense of pedestrian welcome and entry, despite the fact that there is also an accessible ramp onto campus up to George Washington Lane.

OLYMPIC VISTA THRESHOLD

The east side of 15th Ave NE is dominated by structures at this important junction. None of these structures have a street level entrance and there are no nearby crosswalks, which creates an uncomfortable sense of disconnection.

GRANT LANE ENTRANCE

Seemingly built as a vehicular entrance, the approach to the western gate of campus is steep, discouraging bikes and some pedestrians. The large parking garage entrance and service roads further detract from the sense of arrival onto campus.

ASOTIN PLACE CONNECTIONS

Along this stretch only service docks and steep staircases connect campus level with sidewalk level below.

UNIVERSITY DISTRICT OPEN SPACE FORUM #3

Proposed Burke Museum



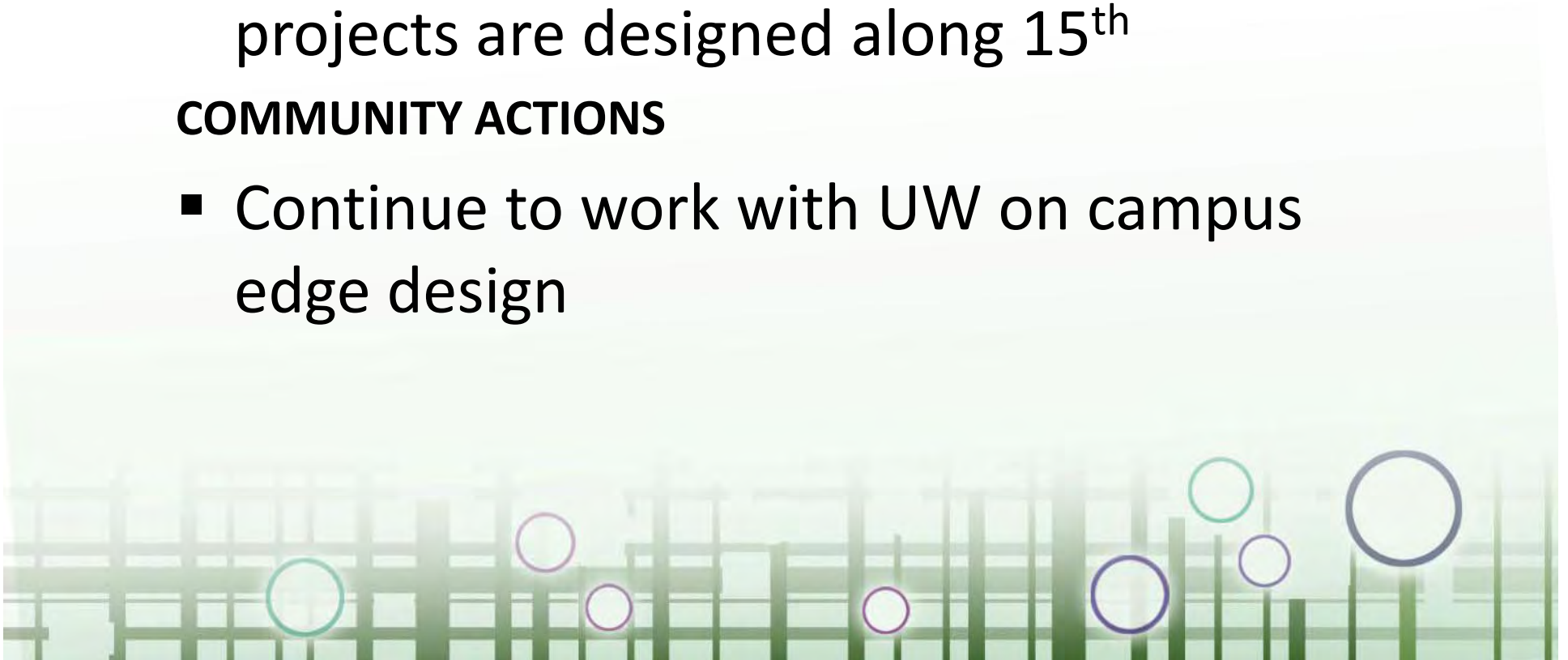
Implementation

UW ACTION

- Continue to work with community to soften the campus edge as new UW projects are designed along 15th

COMMUNITY ACTIONS

- Continue to work with UW on campus edge design



E/W PEDESTRIAN CONNECTIONS



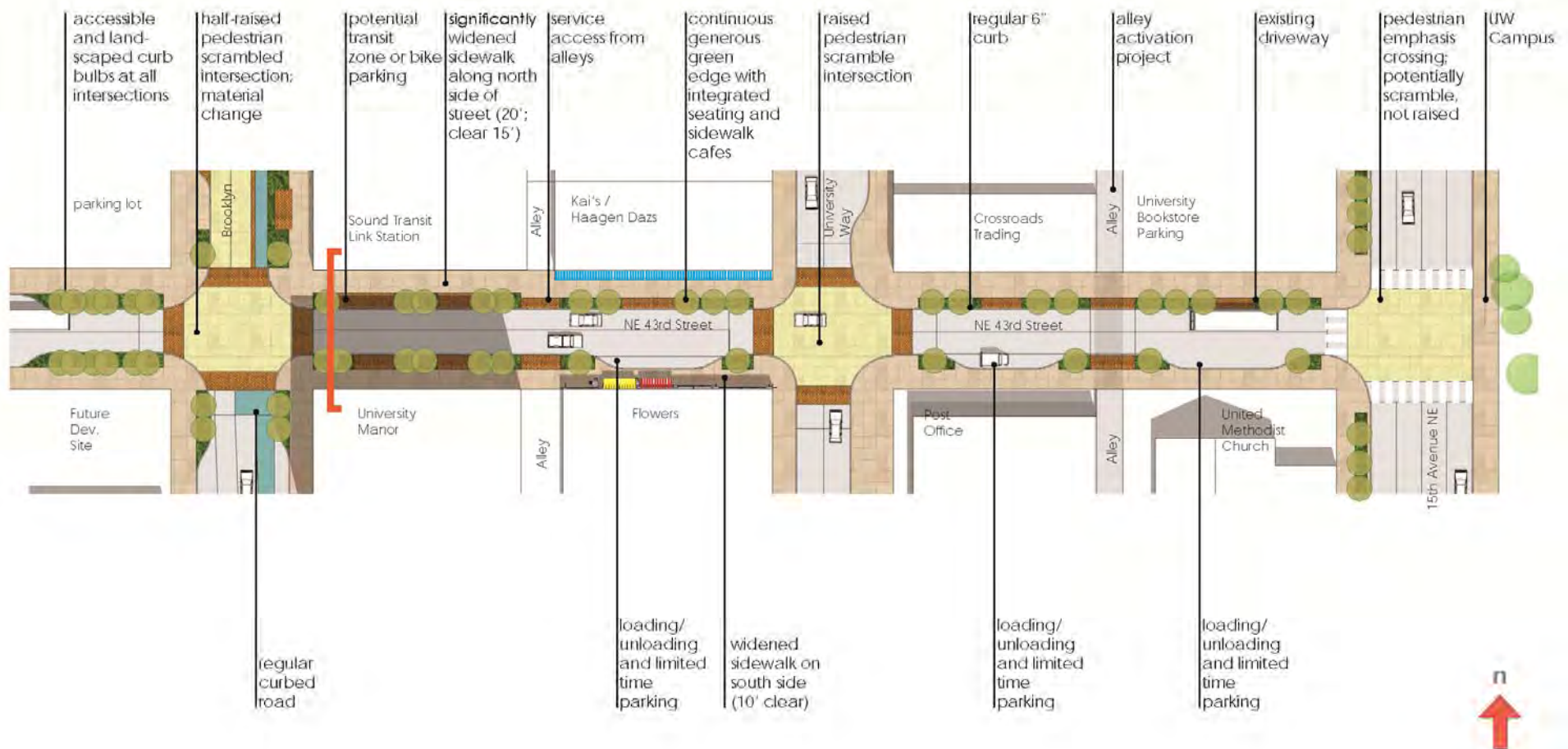
- More pedestrian options between NE 41st St & NE 45th St, including mid-block crossings.

Potential Design Elements

- Reduced vehicle parking
- Close to vehicle traffic (during events)
- Adjacent pocket parks
- Wider sidewalks
- Sidewalk cafes & businesses spilling out



NE 43rd Street at Station



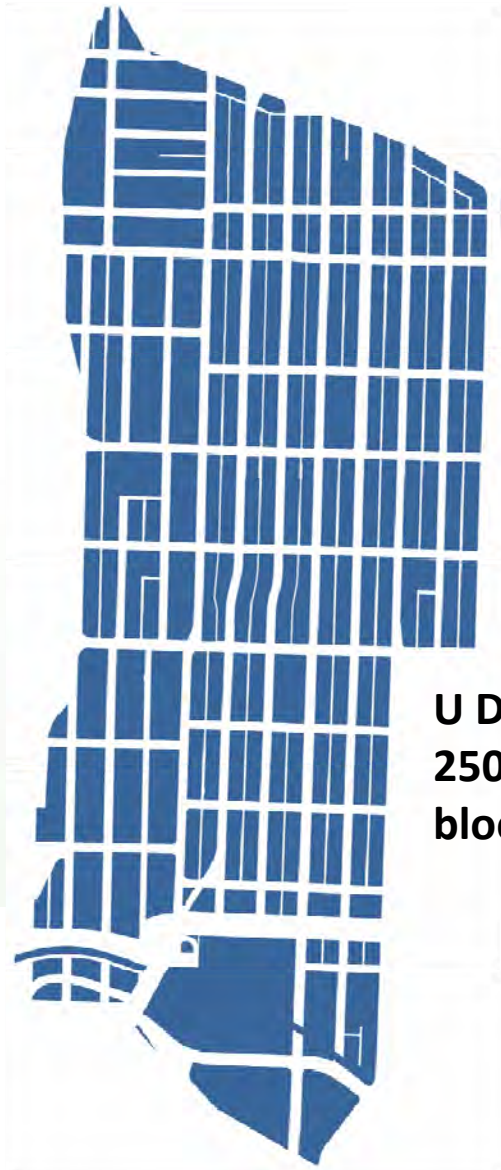
UNIVERSITY DISTRICT OPEN SPACE FORUM #3

E/W Pedestrian Connections

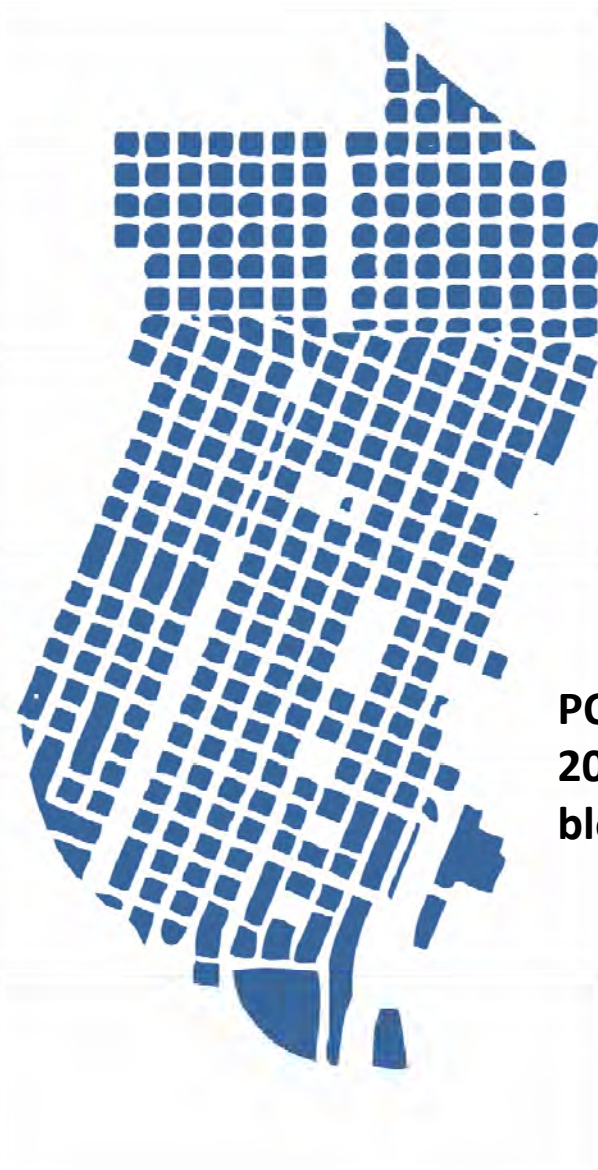
43rd St Parklet (within public right-of-way)



Block Size



U DISTRICT:
250' x 500'
block size

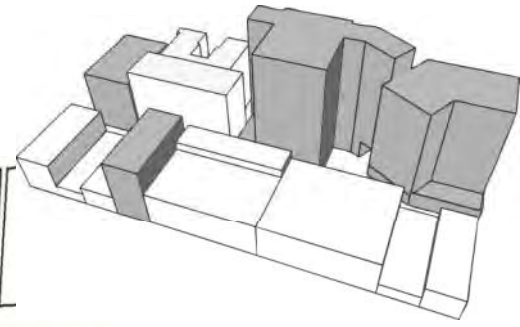


PORTLAND:
200' x 200'
block size

UNIVERSITY DISTRICT OPEN SPACE FORUM #3

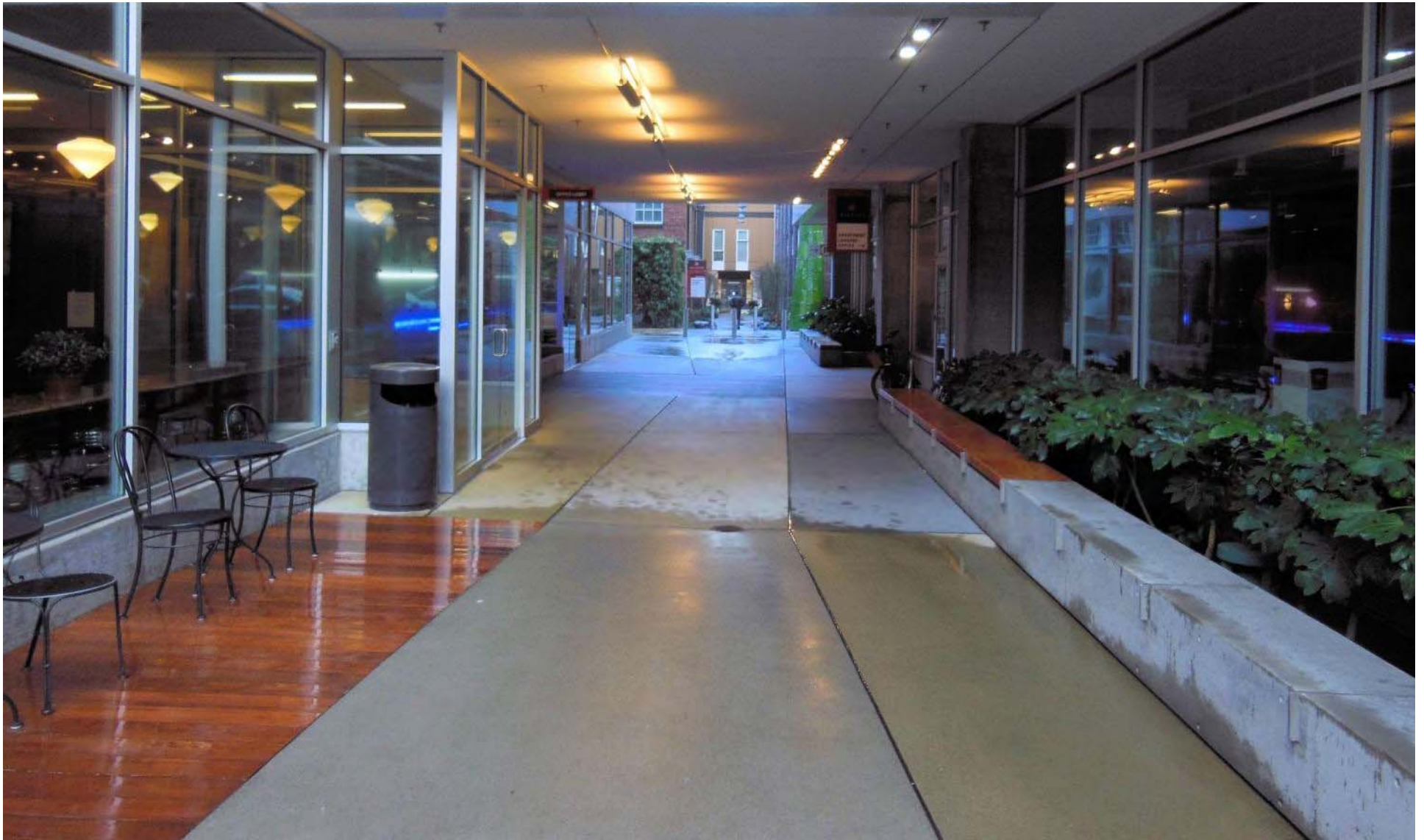
Activated Alleys

E/W Pedestrian Connections



UNIVERSITY DISTRICT OPEN SPACE FORUM #3

Retail Pass-Through



UNIVERSITY DISTRICT OPEN SPACE FORUM #3

E/W Pedestrian Connections

Residential Pass-Through



UNIVERSITY DISTRICT OPEN SPACE FORUM #3

Interior Pass-Through



Implementation

COMMUNITY ACTIONS

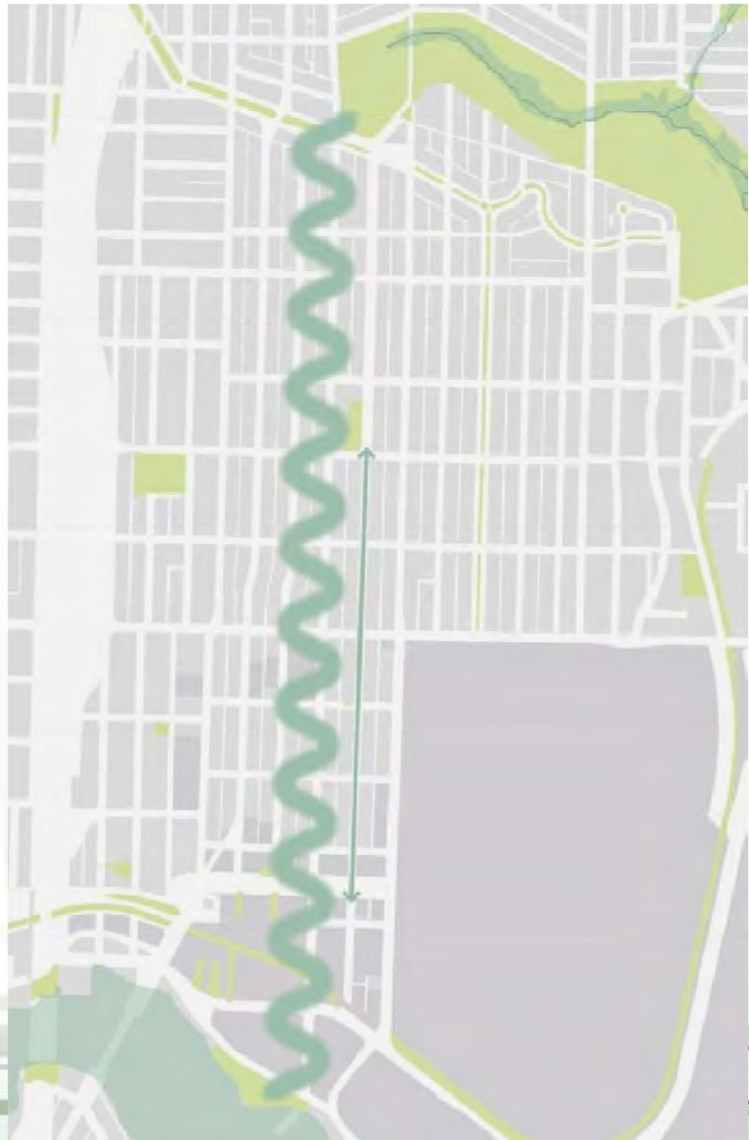
- Support NE 43rd St improvements

CITY ACTIONS

- Finish NE 43rd St designs & work with partners to implement
- Establish design guidelines &/or regulations for mid-block pass-throughs



N/S GREEN SPINE



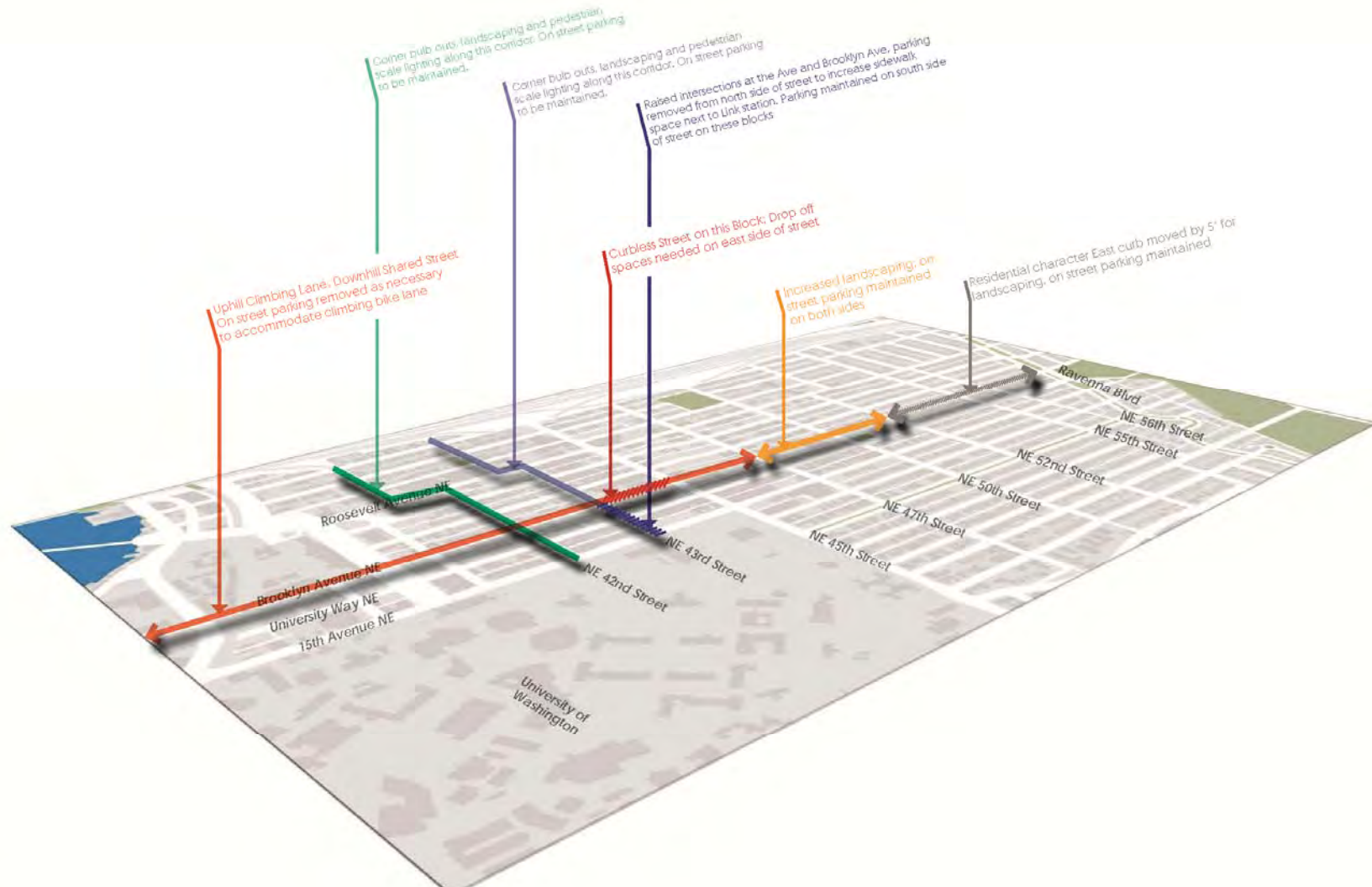
- Vegetation, pedestrian, & cycle connection(s) from Cowen Park to the waterfront.

Design Criteria

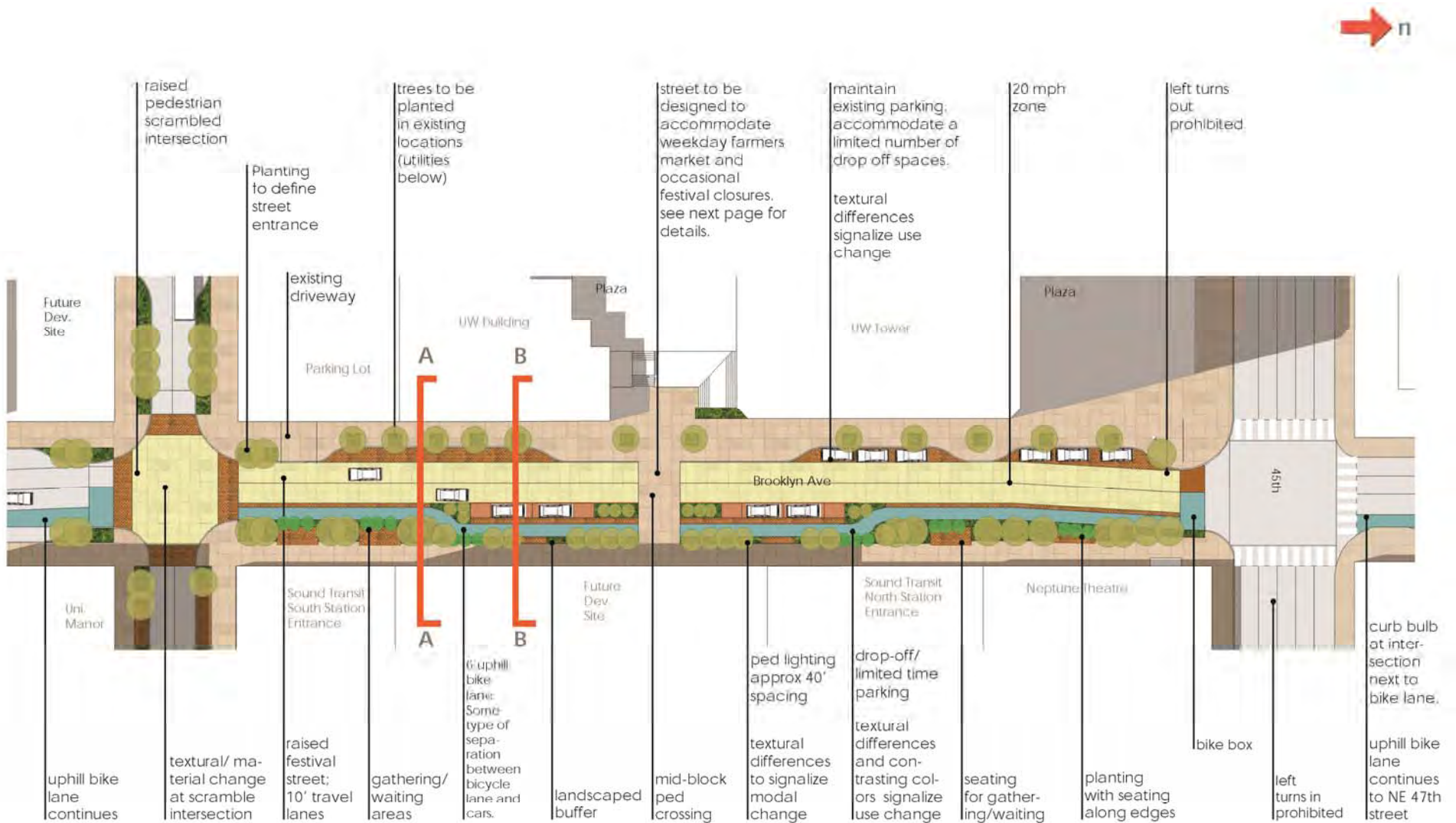
- Additional street trees & other vegetation
- Connected with common theme/narrative
- Prioritized safety amenities for pedestrians & cyclists
- Wider sidewalks
- Encourage adjacent pocket parks



Green Streets Concept Plans



Brooklyn Ave at Station



Neighborhood Greenway

12th Ave NE
under
construction

N/S Green Spine

Slow Speeds and Stop Signs

- Calm traffic entering and crossing the greenway
- Drivers better able to stop and prevent collisions



Safer Crossings at Busy Streets

- Easier for seniors and children to cross
- Make motorists aware of people walking and biking



Speed Humps

- Slow motorists and people riding bikes
- Reduce cut-through traffic



Placemaking

- Promote the activation of public space



Signs and Markings

- Direct people walking and biking to and along the greenway
- Help motorists know people walking and biking are present



Smooth Sidewalks and Pavement

- Safer for you and your family to walk and ride bikes
- Help people in wheelchairs or with strollers



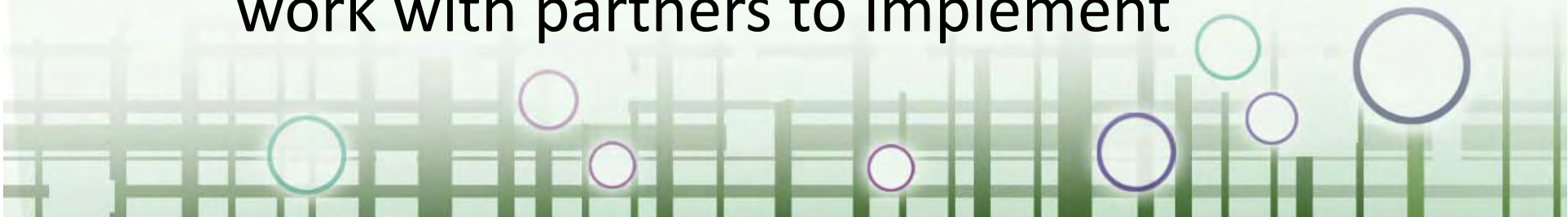
Implementation

COMMUNITY ACTIONS

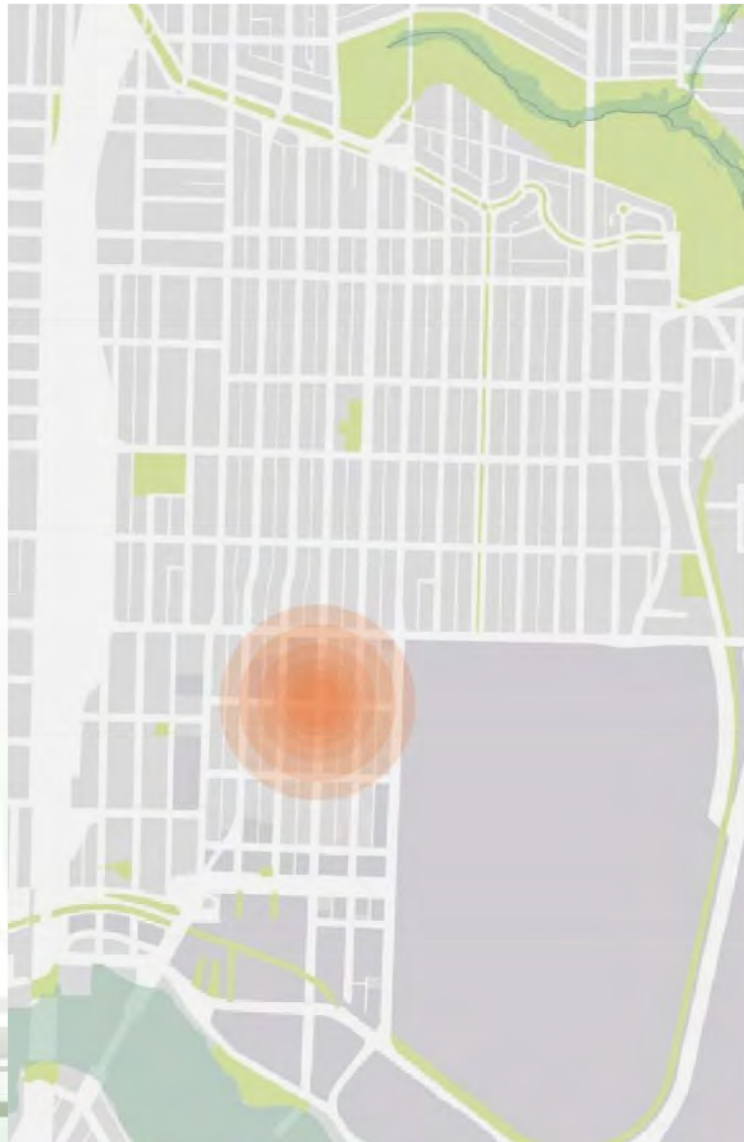
- Talk with neighbors to identify additional needs & problem areas
- Start programming & using residential streets (e.g., Get neighborhood support & apply to turn a block of 12th Ave NE into a “Play Street”)

CITY ACTIONS

- Finish Brooklyn Ave streetscape design & work with partners to implement



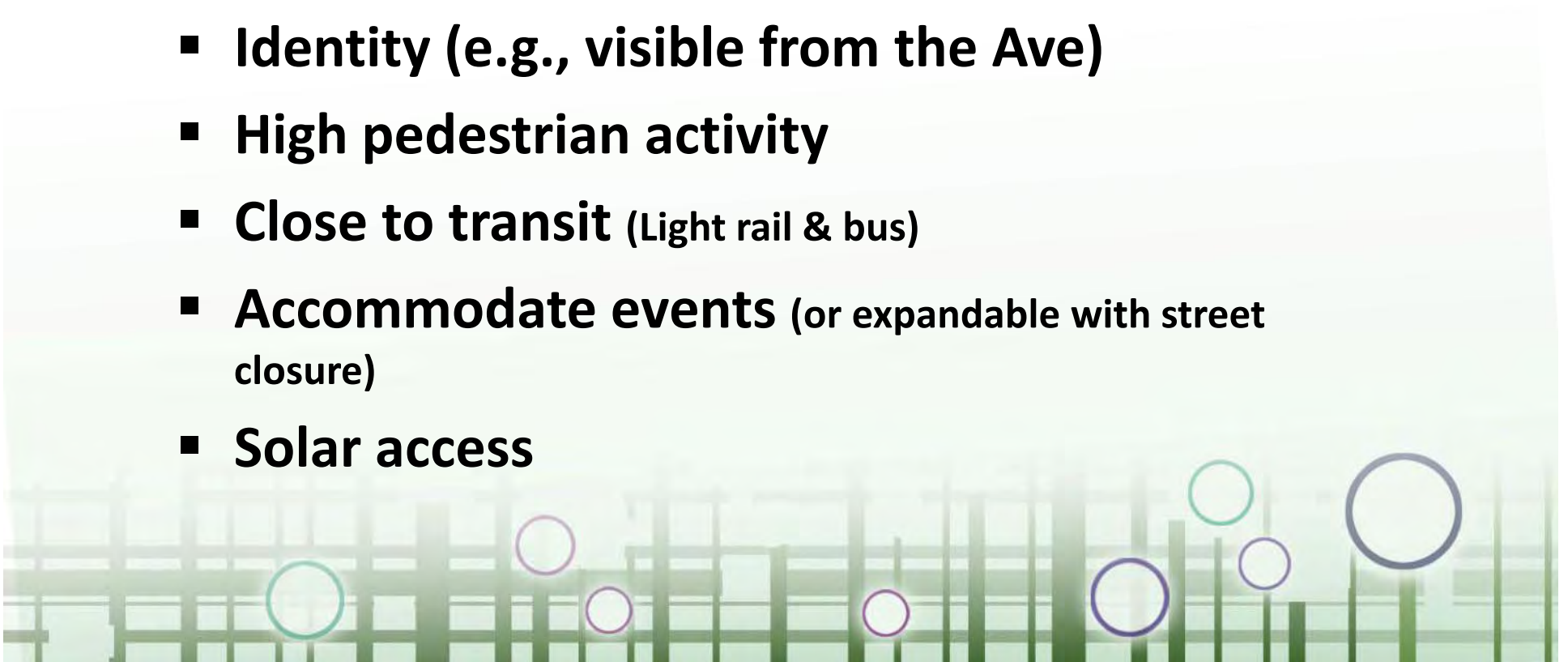
PUBLICLY-OWNED CENTRAL SQUARE



- Large, publicly-owned gathering space for all types of people in the U District.

Location Criteria

- **Inclusiveness** (central location)
- **Active edges & surrounding uses**
- **24-hour surveillance & security**
- **Identity** (e.g., visible from the Ave)
- **High pedestrian activity**
- **Close to transit** (Light rail & bus)
- **Accommodate events** (or expandable with street closure)
- **Solar access**



UNIVERSITY DISTRICT OPEN SPACE FORUM #3

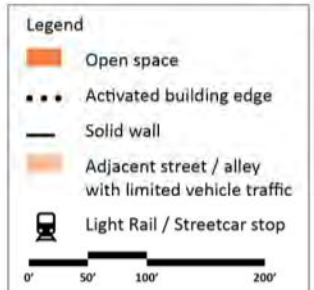
Open Space Dimensions



NOTE: highlighted sites illustrate possible locations for a park---they don't represent specific recommendations or intentions of property owners. Further work is needed on economic & development incentives, as well as negotiations with property owners.

UNIVERSITY DISTRICT OPEN SPACE FORUM #3

Open Space Dimensions



JAMESON SQUARE
(PDX)
50,000 SF



PIONEER COURT
HOUSE SQUARE
(PDX)
50,000 SF

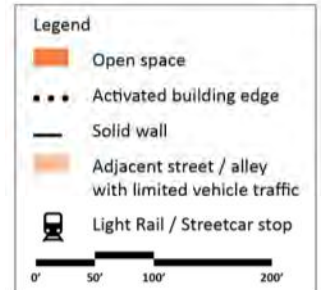


BALLARD
COMMONS
73,000SF



UNIVERSITY DISTRICT OPEN SPACE FORUM #3

Open Space Dimensions



KING STREET
STATION PLAZA
9,500SF

COUNTERBALANCE
PARK 12,000SF

HING HAY PARK
13,000SF

REGRADE PARK
13,500SF



UNIVERSITY DISTRICT OPEN SPACE FORUM #3

*Publicly-Owned
Central Square*

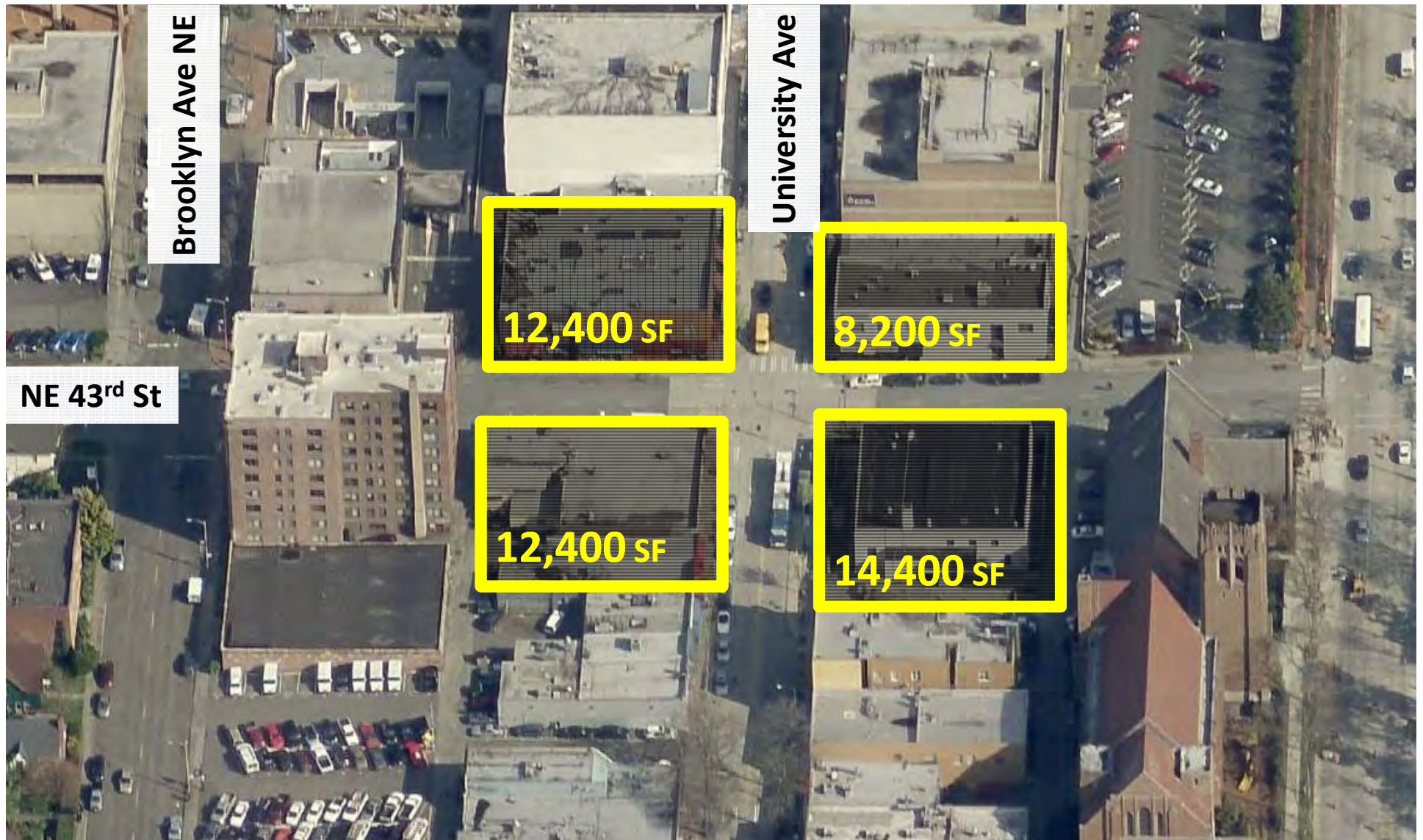
Hing Hay Park (International District)



UNIVERSITY DISTRICT OPEN SPACE FORUM #3

Centered on the Ave

*Publicly-Owned
Central Square*



UNIVERSITY DISTRICT OPEN SPACE FORUM #3

Above the Station

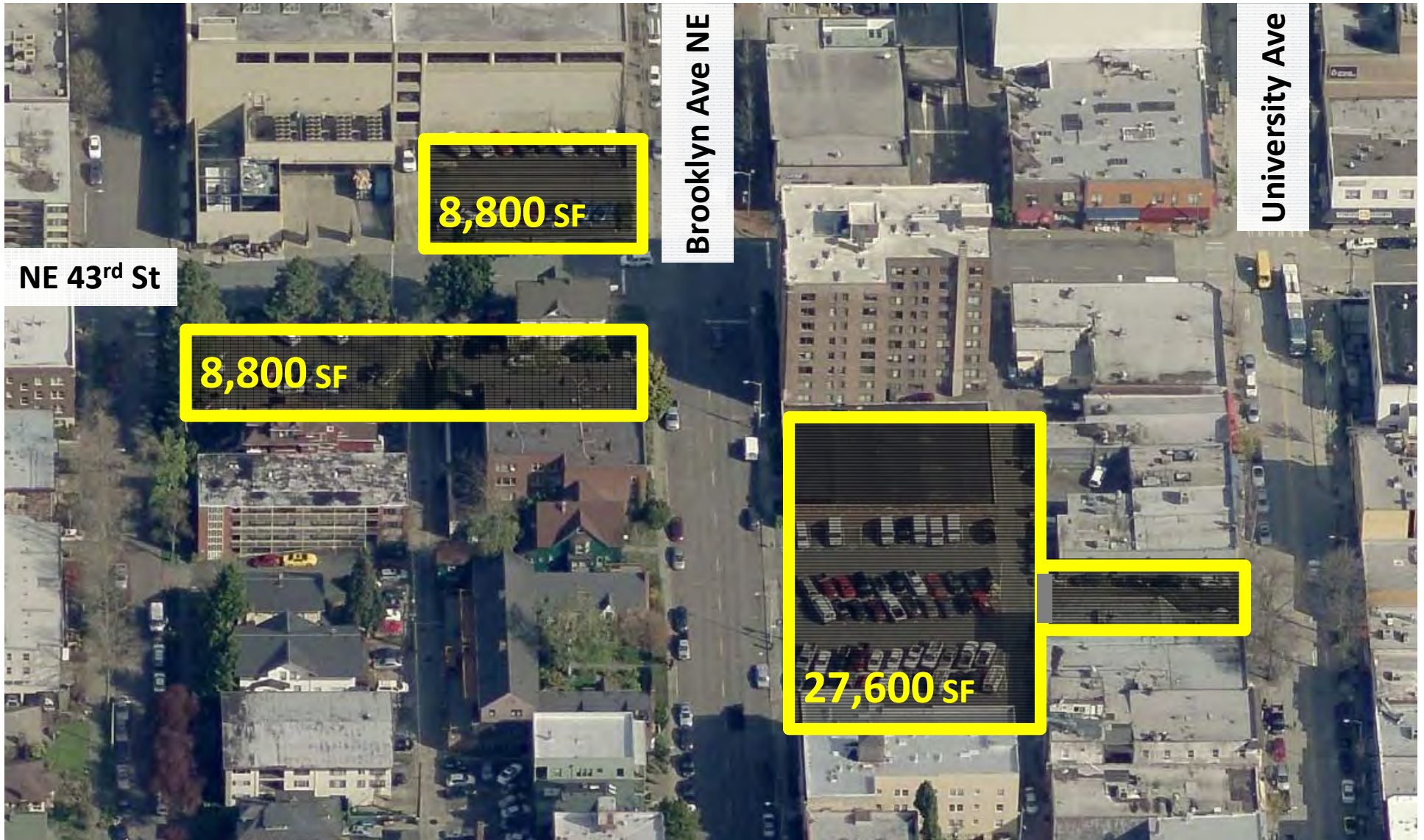
*Publicly-Owned
Central Square*



UNIVERSITY DISTRICT OPEN SPACE FORUM #3

Adjacent to the Station

*Publicly-Owned
Central Square*



Implementation

COMMUNITY ACTIONS

- Identify priority site(s)
- Alert Council to objectives, priorities, & needs. Strongly advocate
- Build a network & educate your neighbors (e.g., set up a booth at the farmers market)
- Think creatively & raise local funds
- Build an organization for local public realm stewardship



Implementation

CITY ACTIONS

- Raise priority with Parks District Board (2015)
- Contact property owner(s) to begin discussion about property acquisition (2015)
- Integrate goals of central square into City Comprehensive Plan (or Council adopted Parks Plan) (2015)
- Develop regulatory/fee/TDR programs to support open space development (2015)
- Include provisions for a central square in upzone legislation

UNIVERSITY DISTRICT OPEN SPACE FORUM #3

DISCUSSION



Question #1

Which recommendations would you most like to see move forward in the next 5 years? Why?



Discussion #2

**Are there any City or community
implementation actions you would
not approve of?**



UNIVERSITY DISTRICT OPEN SPACE FORUM #3

Discussion #3

**Is there anything we have forgotten
or you would like to bring up?**



UNIVERSITY DISTRICT OPEN SPACE FORUM #3

Stay Involved

MINUTES & REPORTS @:

www.udistrictpartnership.org

