

Comprehensive Plan Update

Racial Equity Analysis of Seattle 2035 and Urban Village Strategy

Rico Quirindongo, Interim Director and Michael Hubner, Long Range Planning Manager
Office of Planning and Community Development
City of Seattle

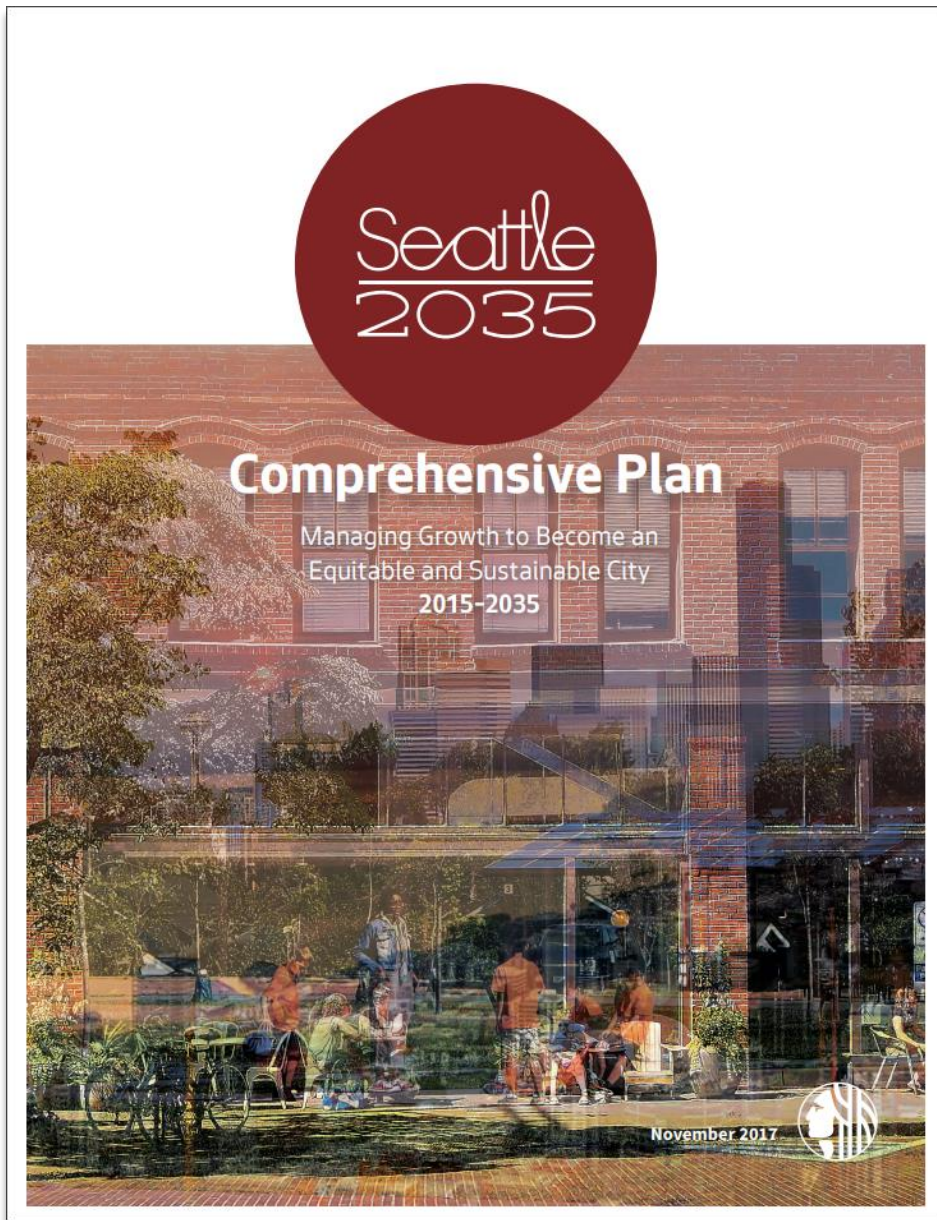
Land Use and Neighborhoods Committee, Seattle City Council
July 14, 2021

Seattle 2035 Comprehensive Plan

A 20-year plan to guide how our city grows, informed by four core values:

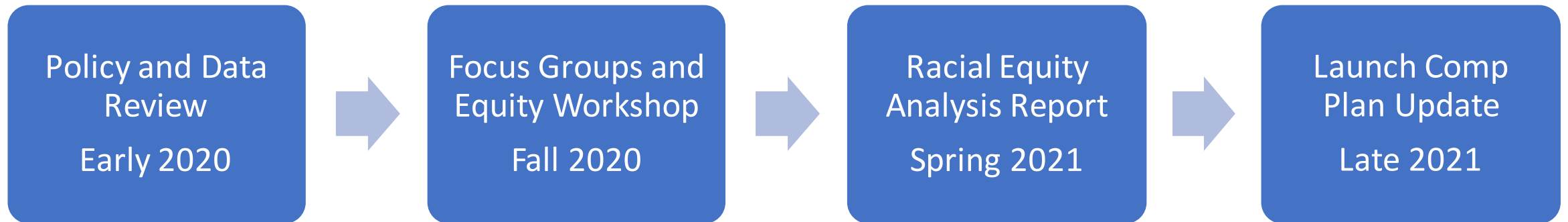
1. Race and Social Equity
2. Environmental Stewardship
3. Community
4. Economic Opportunity and Security

Next update due in 2024



Racial Equity Analysis of Seattle 2035

- Office of Planning and Community Development with Department of Neighborhoods and Office of Civil Rights
- Assistance from PolicyLink
- Foundational work before the Comprehensive Plan update process
- Response to SLI 29-4-B-1



Overview of Plan Update Process

Preliminary Schedule

2020		2021				2022				2023				2024	
Q3	Q4	Q1	Q2	Q3	Q4	Q1	Q2	Q3	Q4	Q1	Q2	Q3	Q4	Q1	Q2
Project planning Research and analysis Racial equity analysis		Public launch Research and analysis Develop plan concepts				Finalize and evaluate alternatives Goals and policies Draft plan and EIS				Final EIS Mayor's plan Council adoption					
← Community engagement, Racial Equity Toolkit (RET) →															

Overview of Plan Update Process

Preliminary Schedule

2020		2021				2022				2023				2024	
Q3	Q4	Q1	Q2	Q3	Q4	Q1	Q2	Q3	Q4	Q1	Q2	Q3	Q4	Q1	Q2
Project planning Research and analysis Racial equity analysis		Public launch Research and analysis Develop plan concepts				Finalize and evaluate alternatives Goals and policies Draft plan and EIS				Final EIS Mayor's plan Council adoption					
← Community engagement, Racial Equity Toolkit (RET) →															

Overview of Plan Update Process

Preliminary Schedule

2020		2021				2022				2023				2024	
Q3	Q4	Q1	Q2	Q3	Q4	Q1	Q2	Q3	Q4	Q1	Q2	Q3	Q4	Q1	Q2
Project planning Research and analysis Racial equity analysis		Public launch Research and analysis Develop plan concepts				Finalize and evaluate alternatives Goals and policies Draft plan and EIS				Final EIS Mayor's plan Council adoption					
← Community engagement, Racial Equity Toolkit (RET) →															

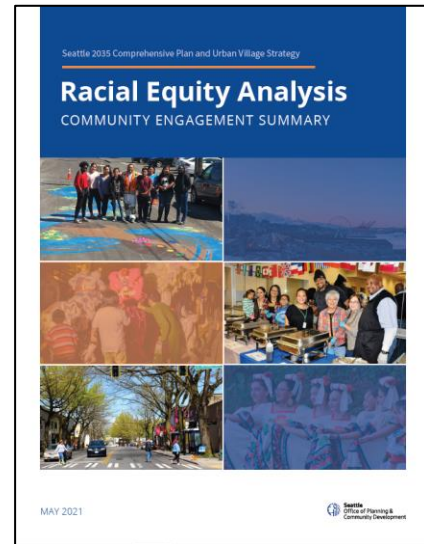


Informed by:

- Outreach to stakeholders and neighborhoods citywide
- Priority engagement with BIPOC and other marginalized communities
- State law (GMA) and regional policies and targets
- Data and analysis, including EIS

Racial Equity Analysis Deliverables

#1 Community Engagement Report (OPCD)

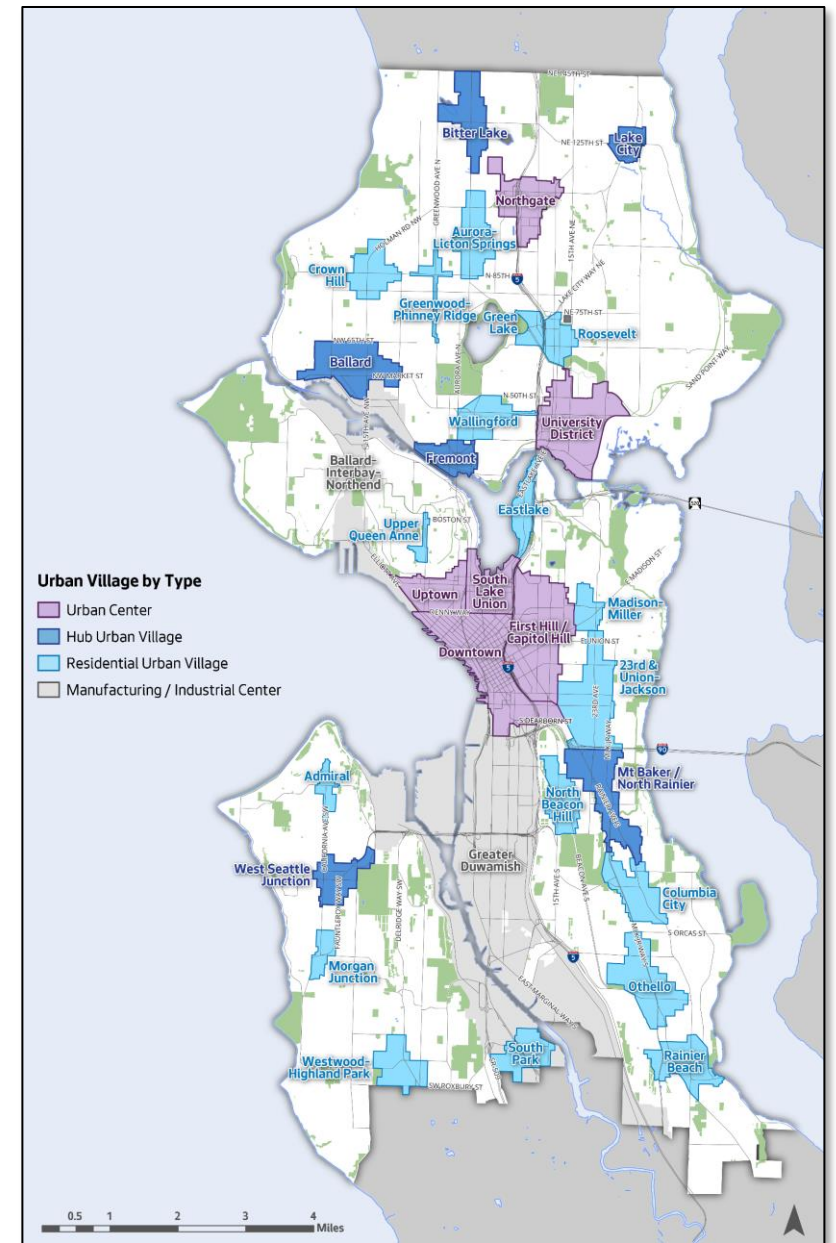


#2 Racial Equity Analysis Findings and Recommendations (PolicyLink)



Background: Urban Village Strategy

- Seattle's growth strategy since 1994
- Focuses housing and jobs within compact walkable mixed-use neighborhoods linked by transit
- Most land outside of urban villages zoned single family
- Shaped by land use patterns that reflect history of racial exclusion (e.g., redlining, racial covenants)



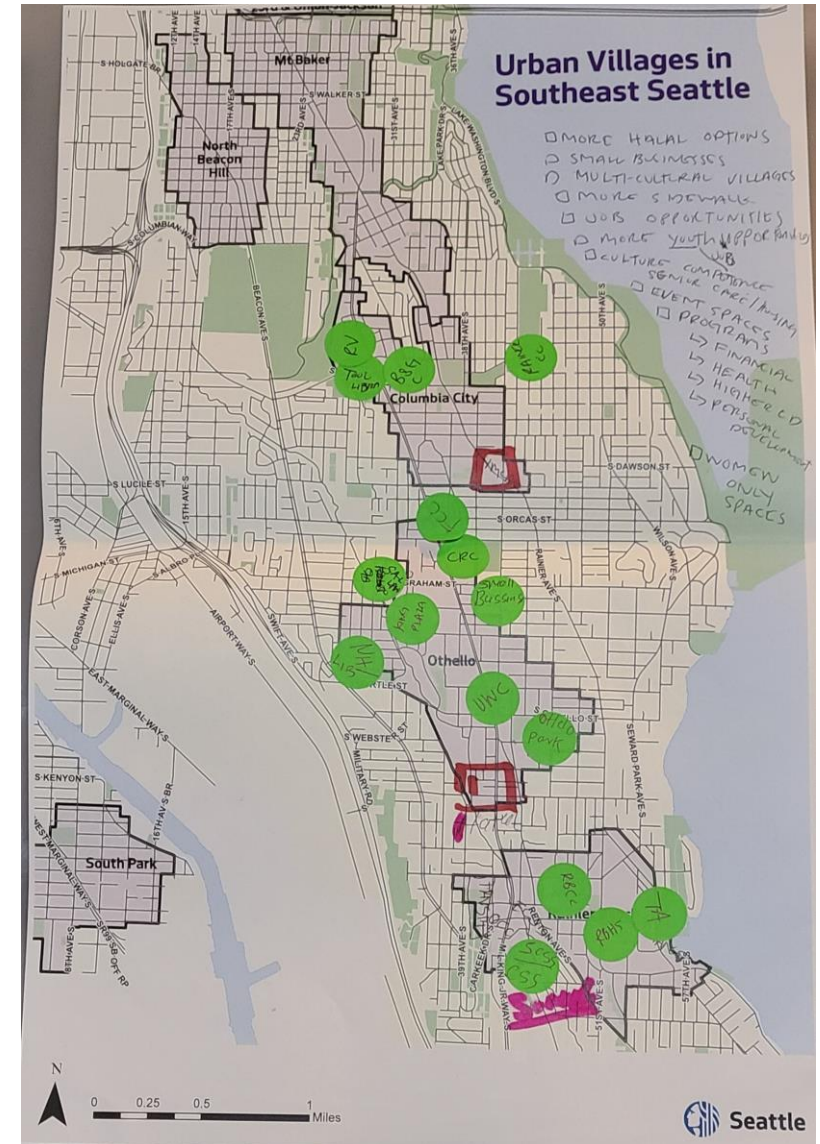
PolicyLink review of relevant data



Informed by early engagement

Early targeted community and stakeholder engagement for Racial Equity Analysis:

- Trained cohort of Community Liaisons
- Five focus groups
- Citywide workshop in October 2020 with PolicyLink



Policylink key findings

Persistent racial disparities related to:

- Housing affordability, choice, and ownership
- Access to neighborhoods of opportunity (incl. parks, schools, healthy environment)
- Housing insecurity and displacement risk
- Access to Seattle's economic prosperity

Policylink recommendations for Comp Plan update

- **Growth strategy:** Allow more housing types across the city with equitable access to wealth building and neighborhood opportunities
- **Affordable housing:** Support tools to increase supply of affordable housing with community control and long-term affordability
- **Displacement:** More and stronger anti-displacement policies and tools, including preservation of cultural communities
- **Inclusive economy:** Data-informed tools to promote equitable economic opportunity, e.g., training and hiring preferences
- **Community engagement:** Provide financial/technical support for sustained BIPOC involvement around comp plan update

Next steps for the Comp Plan update

Housing and Neighborhood Choice

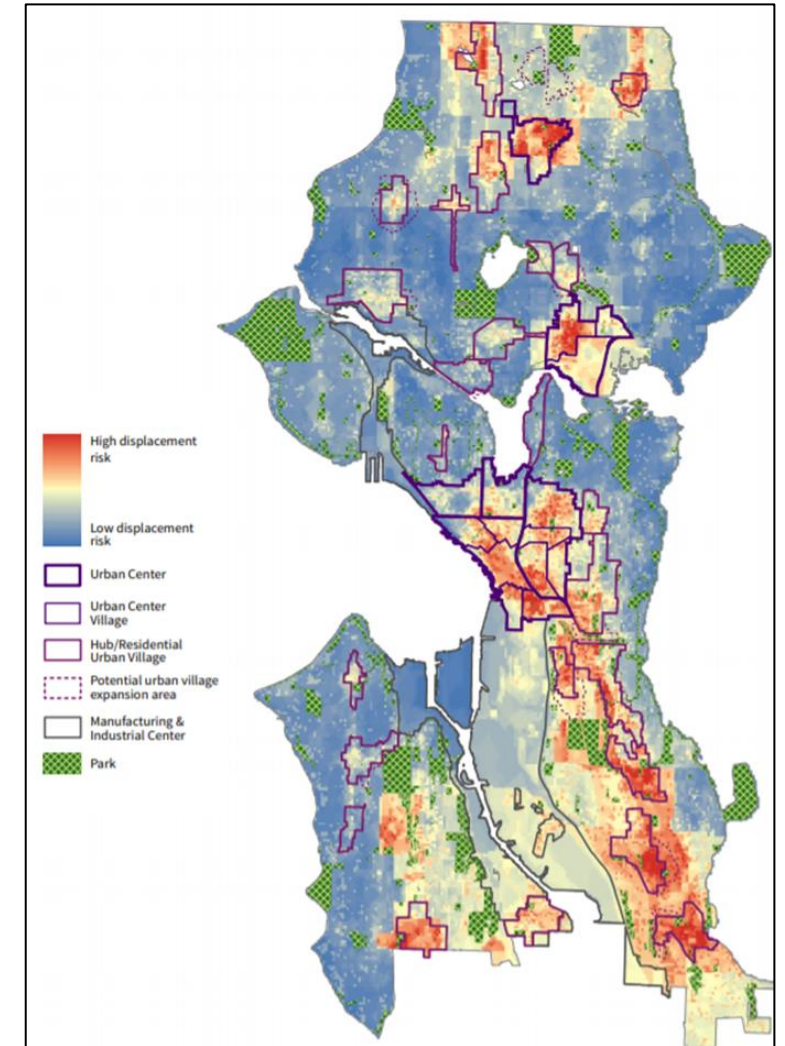
- Study range of growth strategy alternatives, including single family zoning changes (per 2021 budget proviso)
- Explore policies/tools to create more housing, including:
 - Broader range of market rate housing
 - Affordable and mixed-income housing
 - Strategies that benefit BIPOC hhlds



Next steps for the Comp Plan update

Anti-Displacement

- Incorporate anti-displacement in growth strategy alternatives
- Update and enhance displacement risk mapping and data
- Address housing, small business, cultural displacement in Plan
- Identify policies to mitigate displacement risk



Next steps for the Comp Plan update

Equitable Inclusive Economy

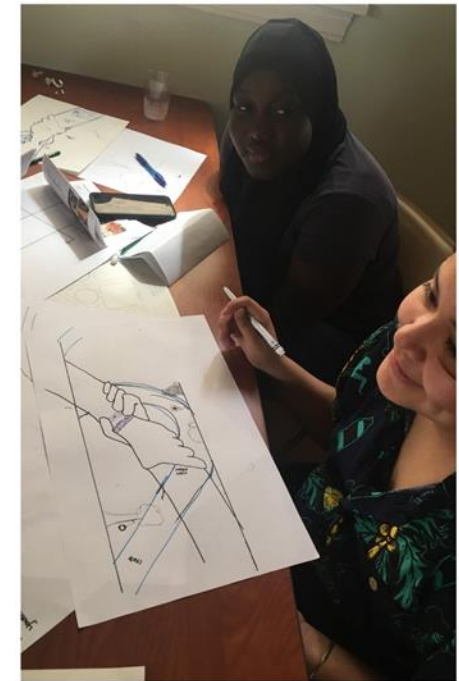
- Enhanced data on economy and race in background research
- Identify policy gaps and opportunities for more integrated approach
- Education and job training
- Promote middle-wage jobs, including through Industrial and Maritime strategy recommendations



Next steps for the Comp Plan update

Community Engagement

- Broader/deeper engagement with BIPOC communities through RET
- Explore options for resourcing equitable community engagement
- Citywide engagement to stakeholders and neighborhoods
- Community engagement plan to Council later in 2021



Thank you.

Questions?