

An aerial photograph of a residential neighborhood. In the foreground, there are several houses with grey roofs and concrete driveways. A dark car is parked on a street. A large, curved bridge structure is visible on the left side of the image. In the background, a multi-lane highway runs horizontally across the frame. The scene is surrounded by green trees and vegetation.

# Reconnect South Park Technical Analysis RFP

Pre-Submittal Conference



# Introductions

Please type your name and email into the chat. If you are looking for partners, please also enter your desired role in the chat.



# Agenda

- 1 project background
- 2 scope of work
- 3 submittal requirements and selection process
- 4 questions

# Project Background



# South Park Context





14TH AVE S



DUMAMISH VALLEY YOUTH CORPS



RESISTENCIA COFFEE



LUCHA LIBRE



DUMAMISH VALLEY YOUTH CORPS

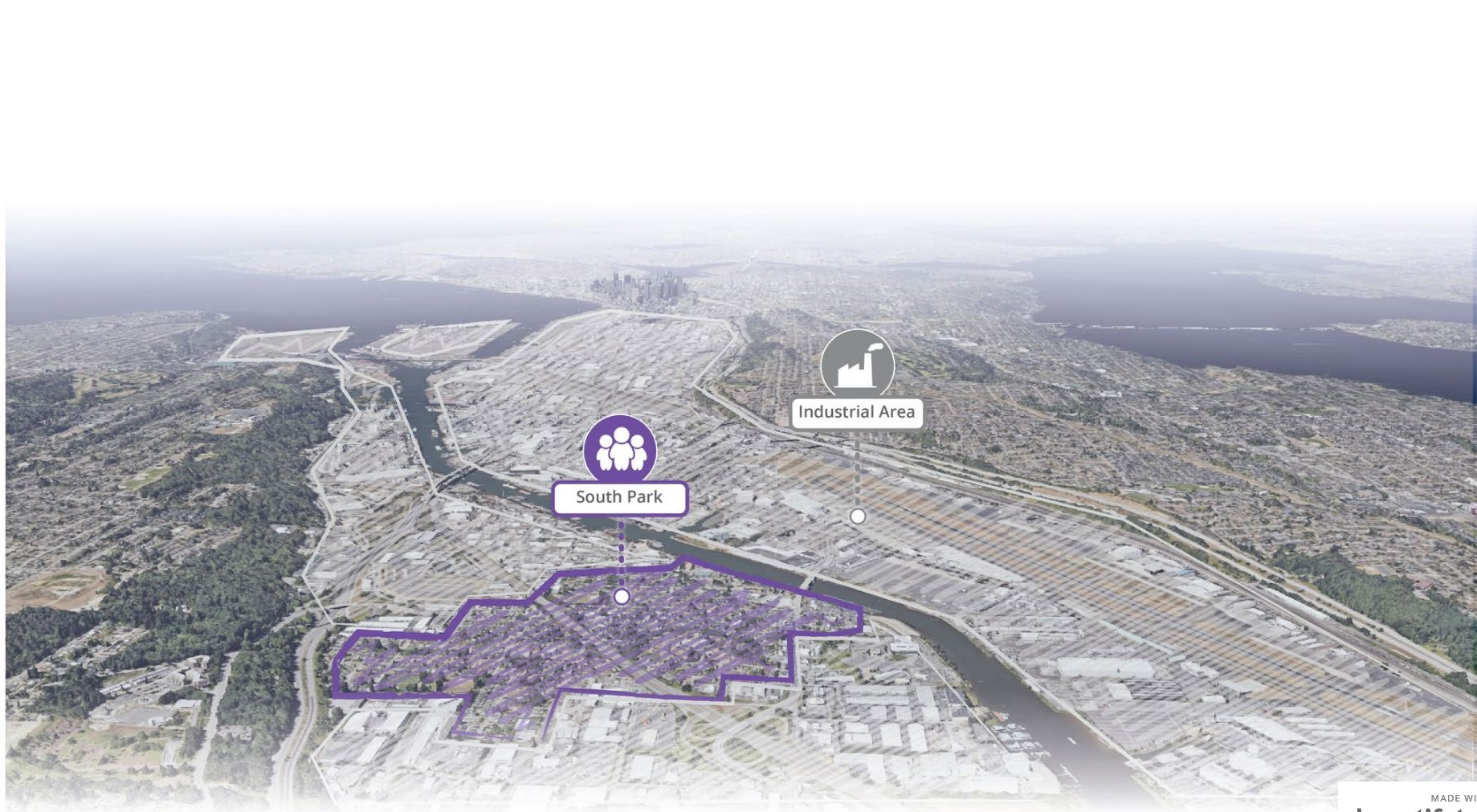


FIESTAS PATRIAS PARADE

South Park is a thriving, well-connected, and active community.

But South Park also faces many environmental challenges.





South Park



Industrial Area





  
SR 509

  
South Park

  
Industrial Area

  
SR 99

  
Interstate 5



Duwamish River  
Superfund Site



Industrial Area



South Park



Interstate 5



SR 509



SR 99



The cumulative impacts of these environmental burdens result in a **13 year** lower life expectancy for South Park residents compared with other Seattle neighborhoods.



Living next to highways has been shown to cause many adverse health outcomes, particularly for youth and the elderly.

These include:

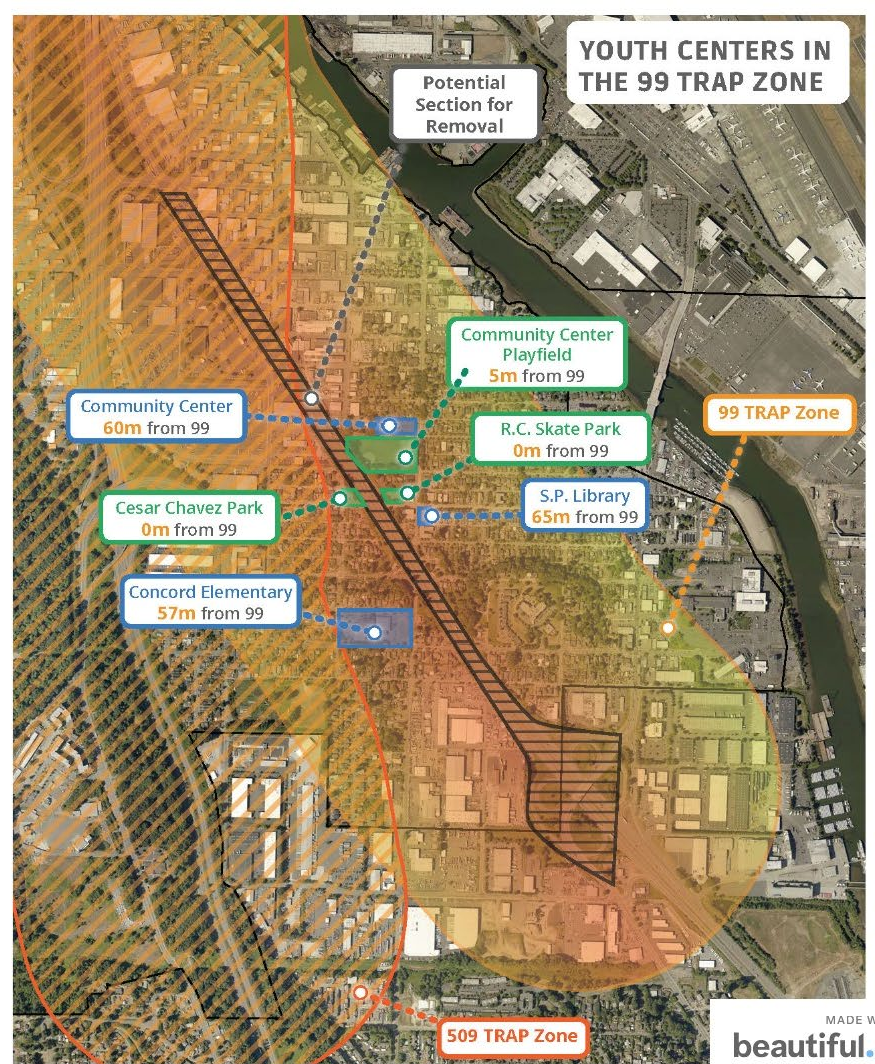
- Asthma
- Decreased lung function
- Cardiovascular disease
- Adverse birth outcomes
- Childhood cancer
- Depression




Traffic-Related Air Pollution (TRAP) is shown to cause health problems for those living within 500 meters of a highway.

**Most places where South Park youth gather and spend their time, such as the elementary school, library, and community center are directly adjacent to Highway 99.**

Most South Park residences are within the Highway 99 TRAP zone, and many people are impacted by the SR 509 TRAP zone as well.



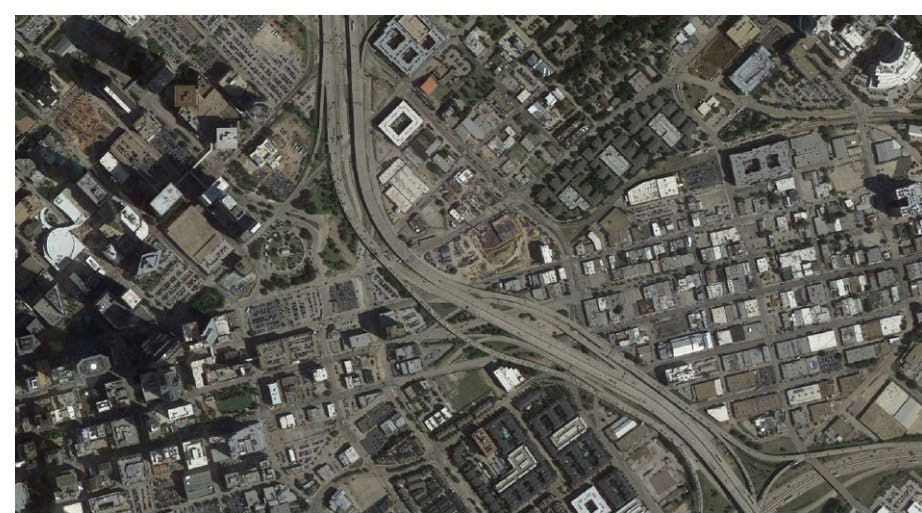


Getting across the highway is also dangerous, and causes many safety concerns.

Youth can often be seen running across the highway to avoid the “scary” trail.

# National Context





**There's a growing movement  
to undo the damage  
of urban highways.**



# Many organized efforts are underway across the U.S. advocating for highway removal.

THIS MOVEMENT HAS BEEN GETTING INCREASED ATTENTION FROM THE PRESS AND ELECTED LEADERS.

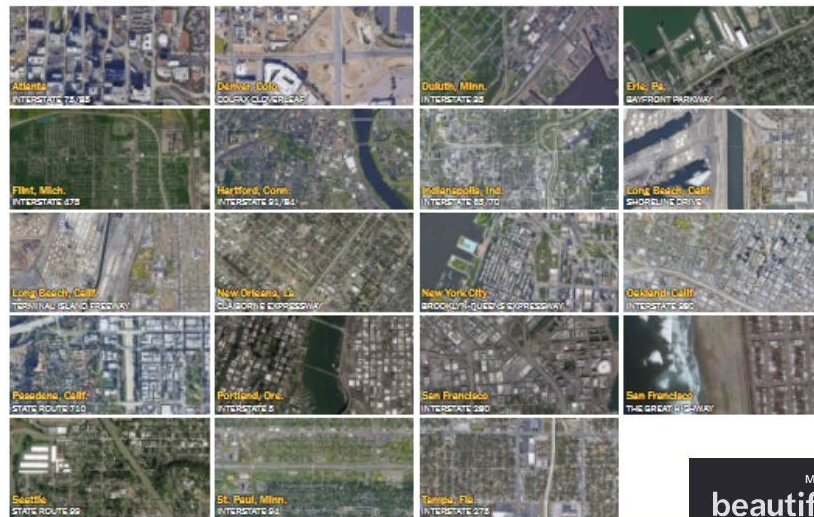
## Committed to removing highway or section



## Removal under official study



## Removal plan proposed



# The Emerging Language of Highway Removals

## From Urban Renewal to Highway Removal

Advocates — and planners — are pushing to tear down the freeways that divided and bulldozed neighborhoods.



The six lane Inner Loop Highway that had for decades divided the eastern part of Rochester, New York, was removed and replaced in 2018 with new complete streets. Wikimedia photo by AIP3745.



## Can Removing Highways Fix America's Cities?

By Nadja Popovich, Josh Williams and Denise Lu | May 27, 2021

ROCHESTER, N.Y. — Built in the 1950s to speed suburban commuters to and from downtown, Rochester's Inner Loop destroyed hundreds of homes and businesses, replacing them with a broad, concrete trench that separated downtown from the rest of the city.

Now, the city is looking to repair the damage. It started by filling in a nearly-mile-long section of the sunken road, slowly stitching a neighborhood back together. Today, visitors of the Inner Loop's eastern segment would hardly know a highway once ran beneath their feet.

As midcentury highways reach the end of their life spans, cities across the country are having to choose whether to rebuild or reconsider them. And a growing number, like Rochester, are choosing to take them down.

In order to accommodate cars and commuters, many cities “basically destroyed themselves,” said Norman Garrick, a

Bring 'em Down

## Cities around the country explore removing elevated highways with federal funding

By Edward Goode • June 1, 2021 • Editor's Pick, Feature, National, Transportation, Urbanism



## How Highway Removal Can Benefit Cities

Cities across the country are reevaluating the impacts of major highway on neighborhoods and looking for ways to revitalize and reconnect communities.

June 1, 2021, 7:00 AM PDT

By Diana Ionescu [@aworkoffiction](#)



## Can Biden's Plan to Remove Urban Highways Improve the Health of American Cities?

President Joe Biden's infrastructure plan aims to tear down urban freeways that bisect cities and displace non-white residents. But reversing the damage done by such projects can be complicated, advocates say.

By Kaiser Health News | July 14, 2021, at 12:08 p.m.

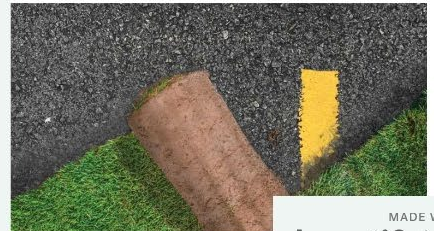


## If They Can Tear Down This Highway in Texas... Yes, Texas!

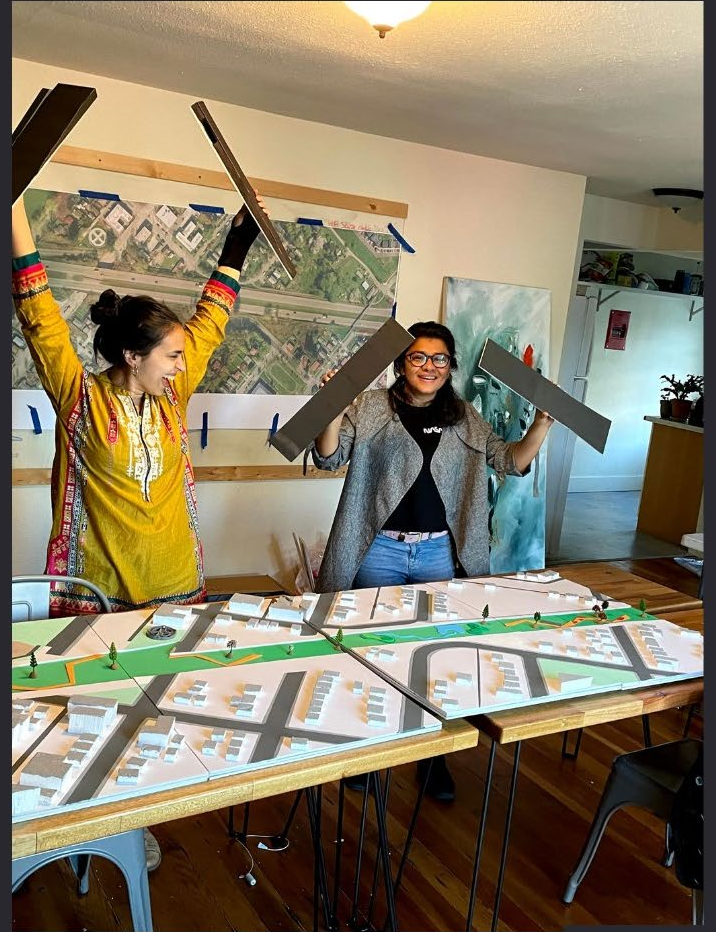
Texas planned to spend \$25 billion widening highways to relieve congestion. But a movement to tear them down instead is growing in influence—even here in the Lone Star State.

By Megan Kimble

JULY 12, 2021



# Technical Analysis Scope



# Project Objectives

- **The overall project goal is to understand possible impacts and community preferences regarding the potential removal or restructuring of State Route 99 through South Park.**
- The goal of the technical analysis is to inform decision-making by evaluating existing conditions and multiple alternatives using objectives and metrics developed through community engagement. Possible considerations include mobility, safety, environmental quality, health, and economic opportunity.

# SCOPE OF WORK

- Assessment and Data Collection

- **Existing Conditions Analysis**
- **Initial Alternatives Exploration:** Uncover potential fatal flaws or major issues
- **“Final” Alternatives Exploration:** Evaluate relative costs and assess the health, mobility, safety, environmental, and economic impacts of multiple alternatives.

- Design, Graphics, and Visualization

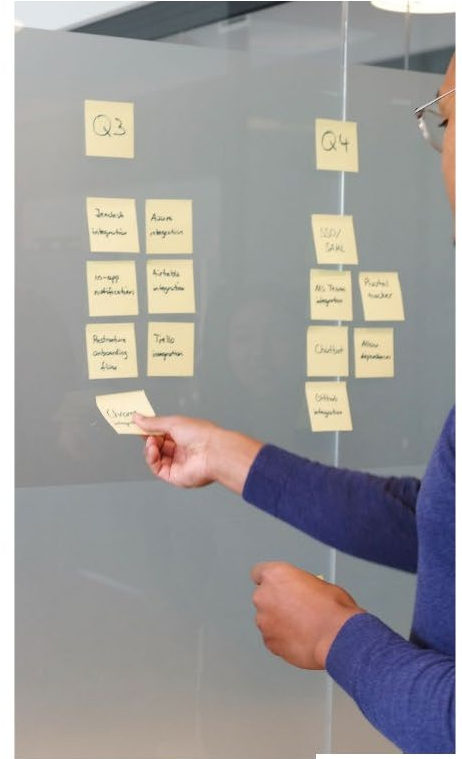
- Develop accessible maps, graphics, and charts to communicate findings.
- Co-develop a high level conceptual design, and design visualizations

- Finance and Management

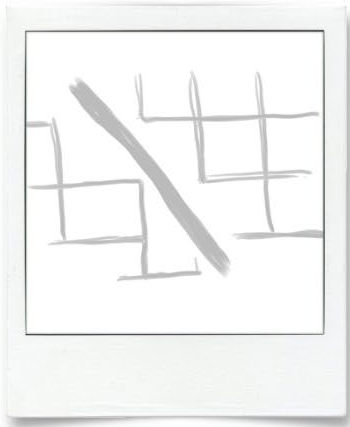
- Preliminary Construction Cost Estimates and Timeline
- Planning Grants and Funding
- Initial Support of Equitable Development Plan

- Coordination, Communication and Engagement

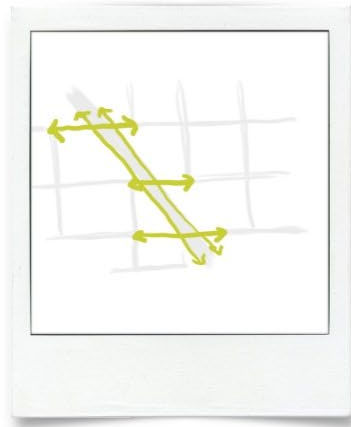
- Co-lead agency advisory meetings
- Coordinate timelines and efforts with other major related efforts and initiatives and LCO-led community engagement efforts
- Develop partnerships and keep informed
- Provide public-facing documentation that communicates study results



# Potential Alternatives



## Keep current conditions



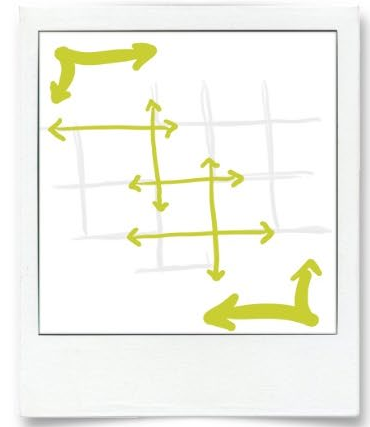
## Redesign

Add intersections, mitigate noise and air pollution, and add multimodal infrastructure



## "Cut and Cover"

Create a tunnel under South Park and move traffic underground



## Remove and reroute

Remove the South Park segment of SR-99 and reroute traffic to other N-S corridors

# Proposed Timeline



# Submittal Requirements and Selection Process



MADE WITH

beautiful.ai





# Consultant Selection

- The Consultant Team should demonstrate expertise with the following topics:
  - The Federal Reconnecting Communities Program and other efforts to address the disproportionate impacts of urban freeways on communities of color
  - Environmental and Climate Justice
  - Induced Demand
  - Equitable Development and Anti-Displacement Strategies
- The Consultant Team should also demonstrate experience, at a minimum, in the following disciplines:
  - Transportation planning, traffic modeling, and operational analysis
  - Public Health
  - Environmental analysis and greenhouse gas emissions calculations
  - Urban planning and design, including land use law
  - Landscape architecture
  - Road traffic noise analysis and abatement
  - Cost estimating
  - Civil and structural engineering
  - Real estate and development economics
  - Emergency Response modeling

# Minimum Qualifications

The project manager shall have a minimum of 5 years experience with relevant projects.

The team shall have representatives from all of the disciplines and subject areas needed to perform this work. Teams do not necessarily need representatives with a terminal degree in every discipline listed in the last slide, however, teams must have representatives with enough subject matter expertise to competently perform the studies and evaluations described in the scope of work.

The team shall demonstrate their experience using examples of relevant projects in complex urban environments in cities similarly sized or larger than Seattle within the last ten years.



# Submittal Checklist

✓ Consultant Questionnaire

✓ Proof of Legal Business Name (if applicable)

✓ Minimum Qualifications

✓ Consultant Inclusion Plan

✓ Non-Disclosure Agreement form(s), signed (if applicable)

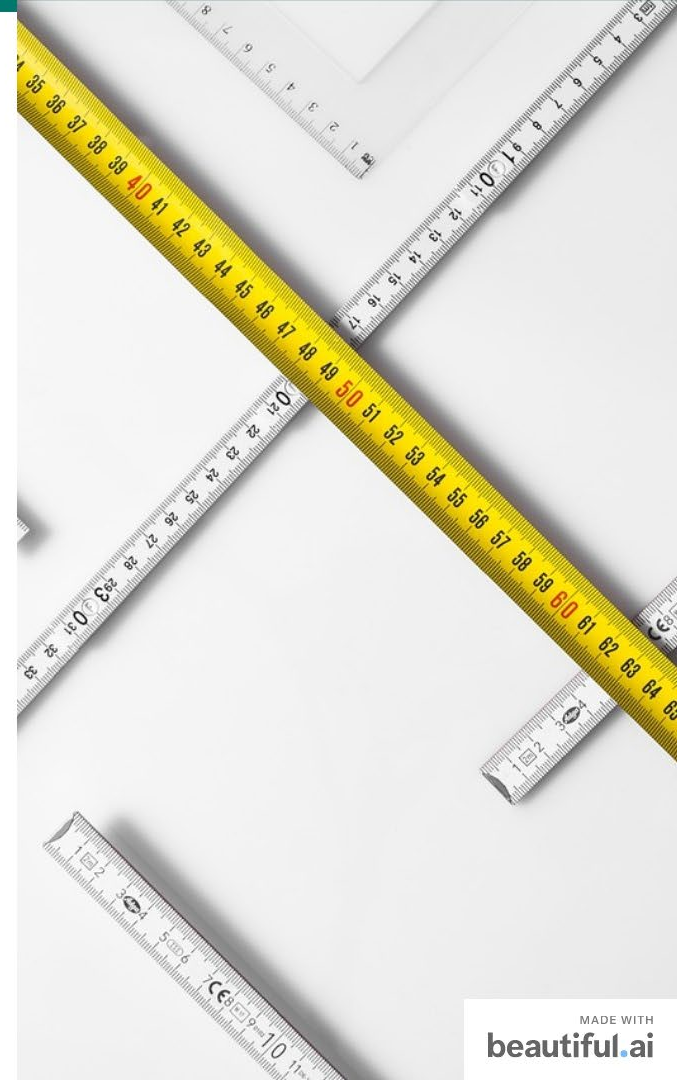
✓ Optional - Letter of Interest

✓ Proposal Response

- Approach to the Scope of Work and Team Organization
- Questions:
  - What are some ways that you could empower and work with local youth, community members, or community organizations to collect data for this project?
  - How do you plan to approach the technical studies in ways that center community values, objectives, and narratives?

# Evaluation

	Percentage
Proposal Response: Approach	30%
Proposal Response: Questions	10%
Organization Structure	10%
Relevant Experience	20%
References	10%
Inclusion Plan	10%
Interviews	10%
<b>Total</b>	<b>100%</b>



Questions?

