

RESTROOM CONCEPT DESIGN

SEATTLE DESIGN COMMISSION

MAY 20TH, 2021



INTRODUCTION

INTRODUCTION

WATERFRONT PROGRAM



PREVIOUS RESTROOM LOCATION STUDIES



FORMER "PORTLAND LOO" LOCATIONS

RAILROAD WAY

EBSP

MAIN CORRIDOR

PIER 58

OVERLOOK WALK

PIER 62



LOCATIONS ARE CENTRAL BUT DO NOT PROVIDE ENOUGH CAPACITY, HAVE SAFETY CONCERNS AND ARE NOT NECESSARY WITH THE RESTROOM FACILITY

LOCATIONS NOT CENTRAL AND ARE NOT COMPATIBLE WITH OCEAN PAVILION AND OLW

PIONEER SQUARE EAST-WEST STREETS

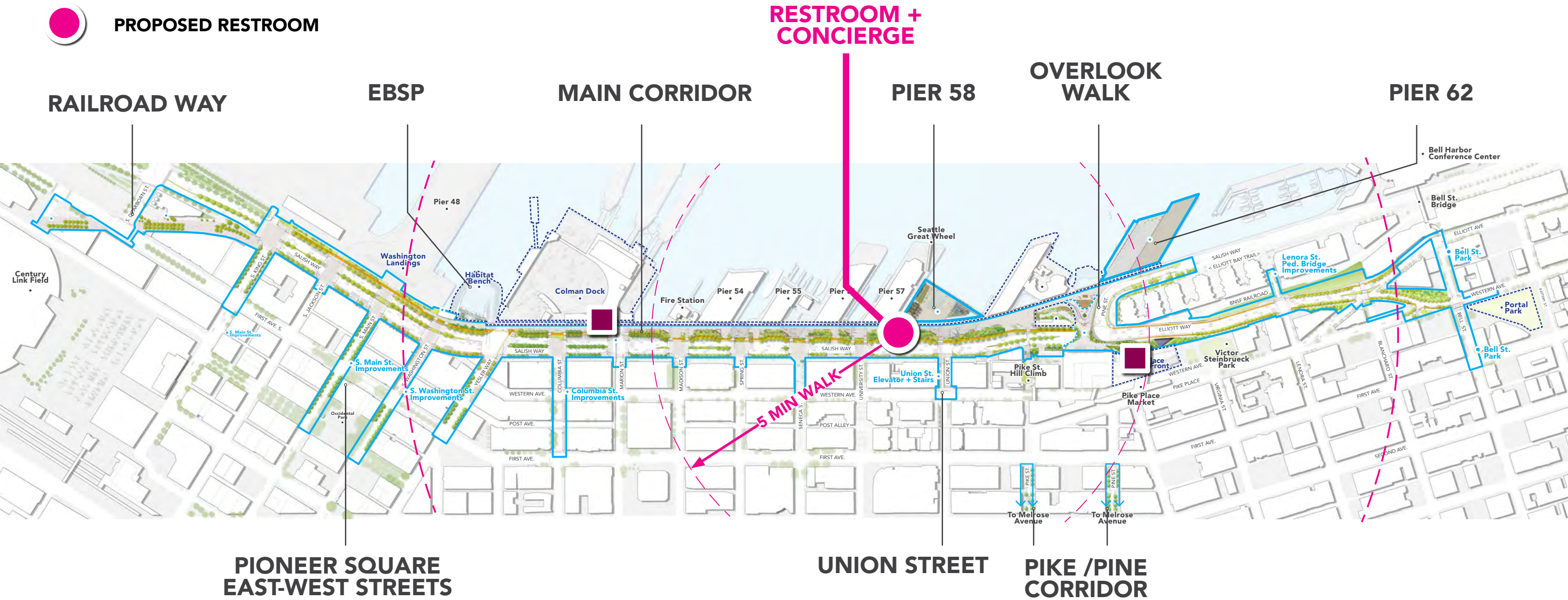
UNION STREET

PIKE / PINE CORRIDOR

INTRODUCTION




WATERFRONT PROGRAM

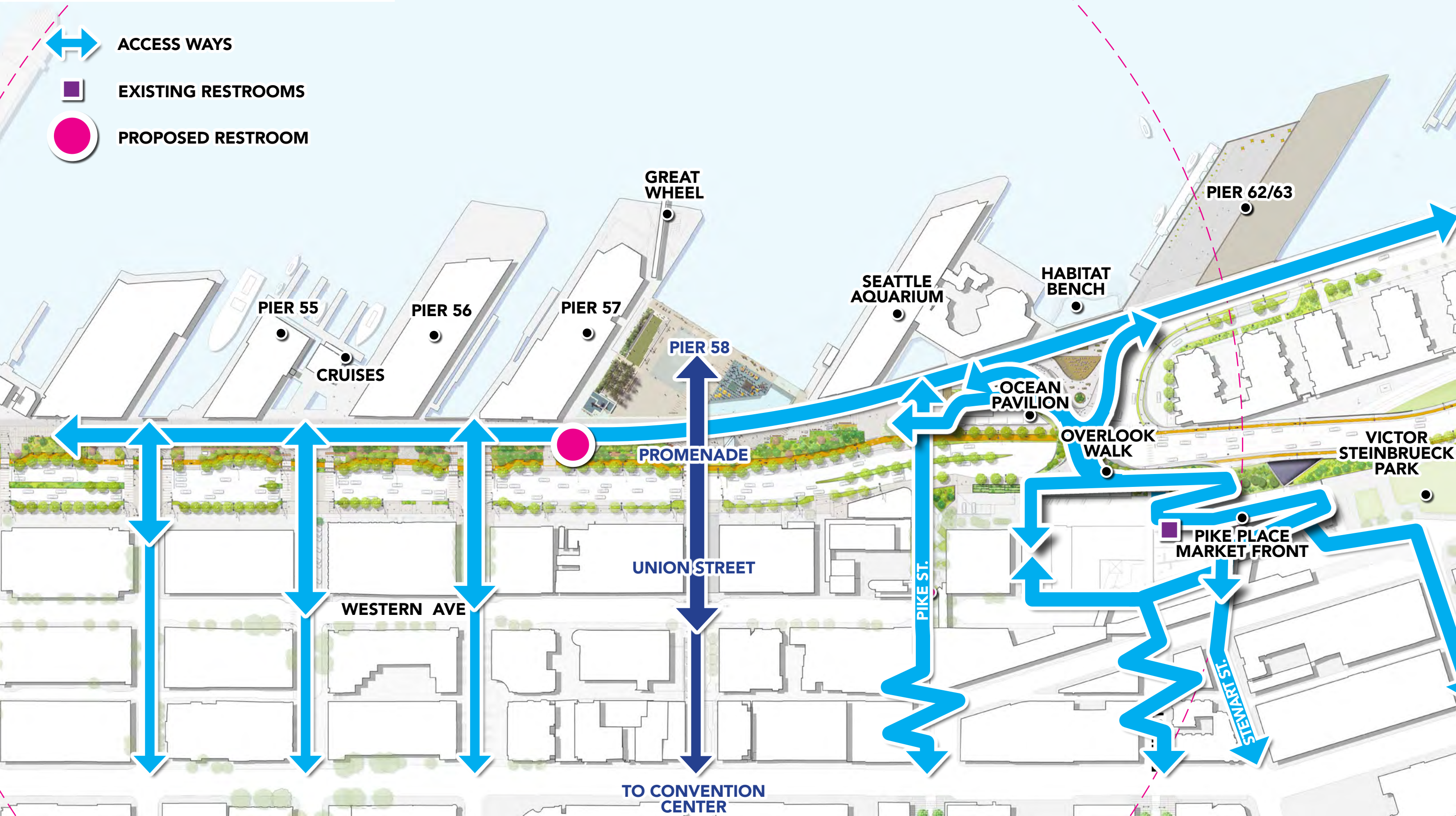
-  EXISTING RESTROOMS
-  PROPOSED RESTROOM



INTRODUCTION

CENTRAL PUBLIC OPEN SPACE

-  ACCESS WAYS
-  EXISTING RESTROOMS
-  PROPOSED RESTROOM



INTRODUCTION

PROMENADE



PROMENADE BOARDWALK



SOCIAL INTERSECTIONS



UNION STREET IMPROVEMENTS



PUBLIC ART

GOALS

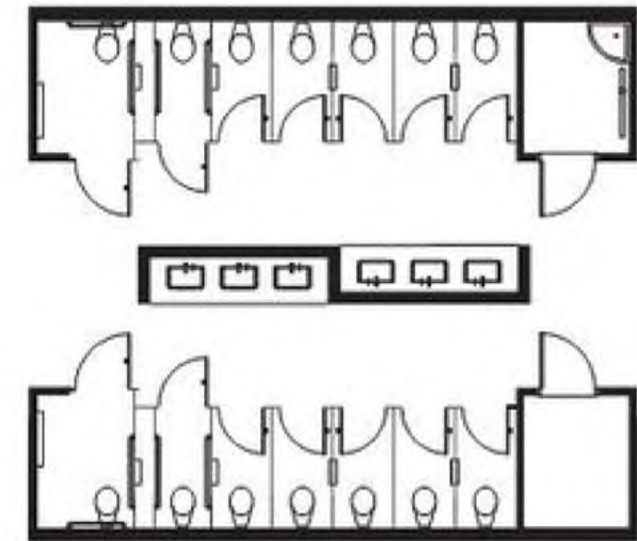
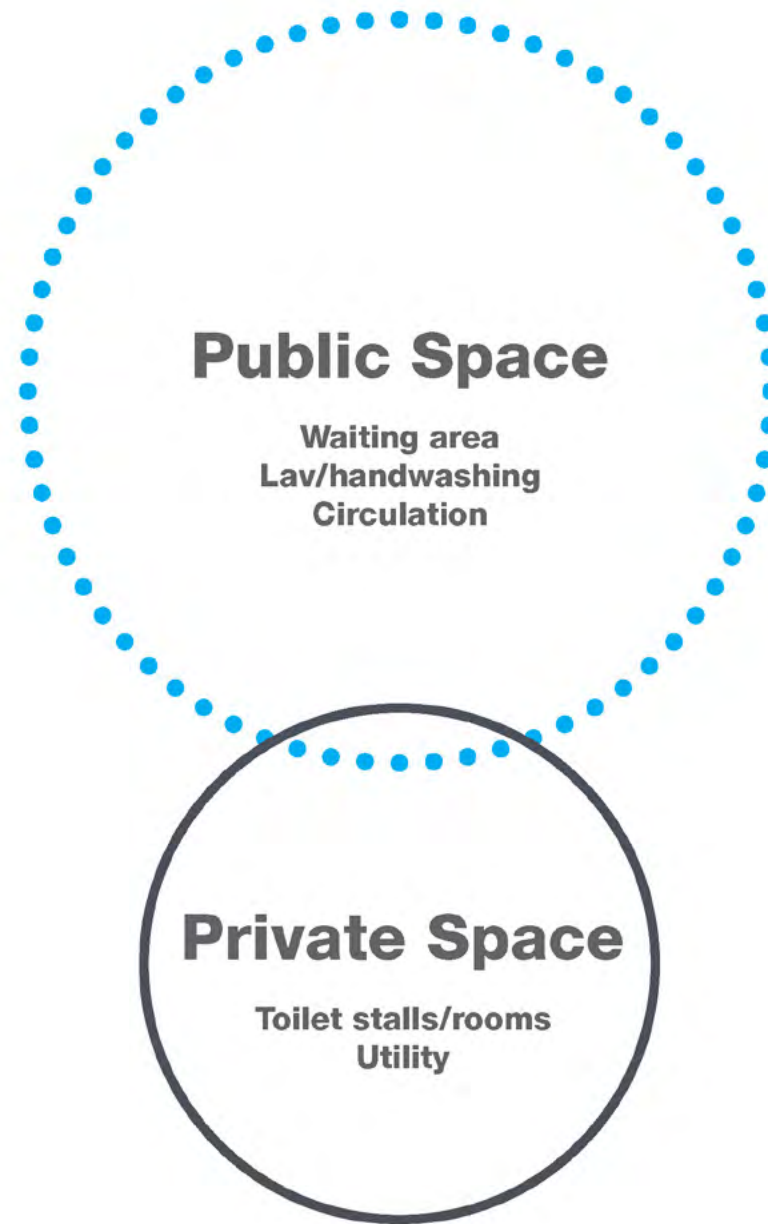
GOALS

DESIGN BRIEF

- Provide a welcoming, safe and clean facility, with attending personnel (conciierge) during open hours, to enhance the visitor experience for the diverse users of the Waterfront.
- Ensure that the facility serves visitors of all ages and abilities.
- Express the unique character of the waterfront as well as the historic and cultural background of the site.
- Provide a fun, relaxing atmosphere for families while waiting, and provide visibility to Pier 58 and especially the Play Area.
- Take advantage of technological solutions to provide hands-free door and fixture operations. Consider automatic cleaning and sanitizing systems that could be operated multiple times per day to reassure users of overall cleanliness and care.

GOALS

PUBLIC AND PRIVATE SPACE



A layered approach to the restroom design would emphasize the quality and size of public space over the quantity of plumbing fixtures.

GOALS

VIEWS AND SIGHT LINES



The Concierge Office needs to be clearly visible from surrounding environments outside of the facility, while also providing unobstructed sightlines to all areas within the facility to enhance the feeling of safety and security for all.

GOALS

ALL GENDER RESTROOMS



Tongva Park -
Santa Monica, CA
Shared lavs
Natural ventilation + daylight
Privacy screening
Waiting area
Security gates



Bicycle Path
- Ecatepec, Mexico
Shared lavs
Waiting areas
Natural ventilation + daylight
Integrated landscape



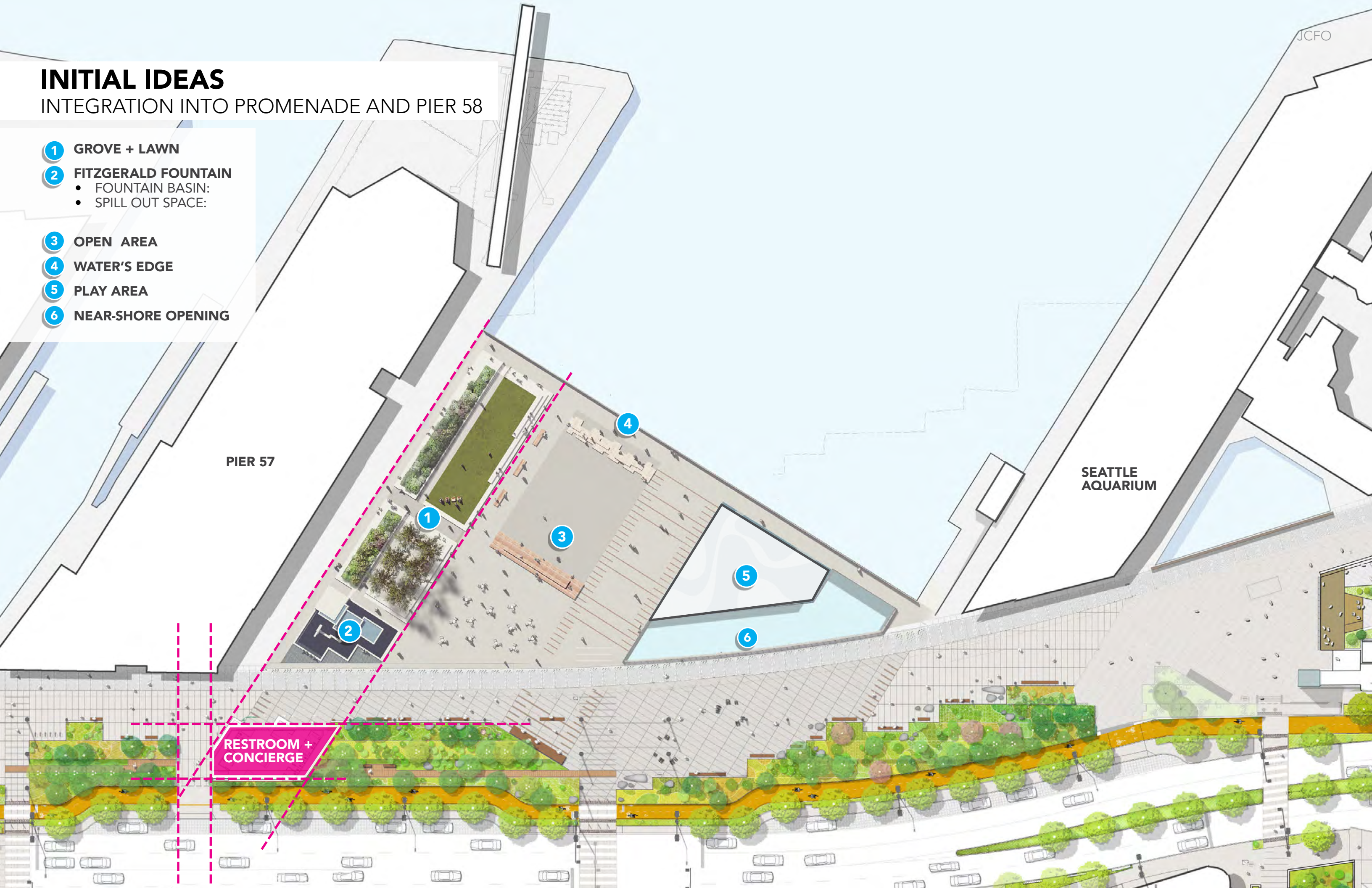
Clover Park - Santa Monica, CA
Shared lavs
Natural ventilation + daylight
Privacy screening/ Views out
Full height stall walls w/minimal space below door
Bright colors

INITIAL IDEAS

INITIAL IDEAS

INTEGRATION INTO PROMENADE AND PIER 58

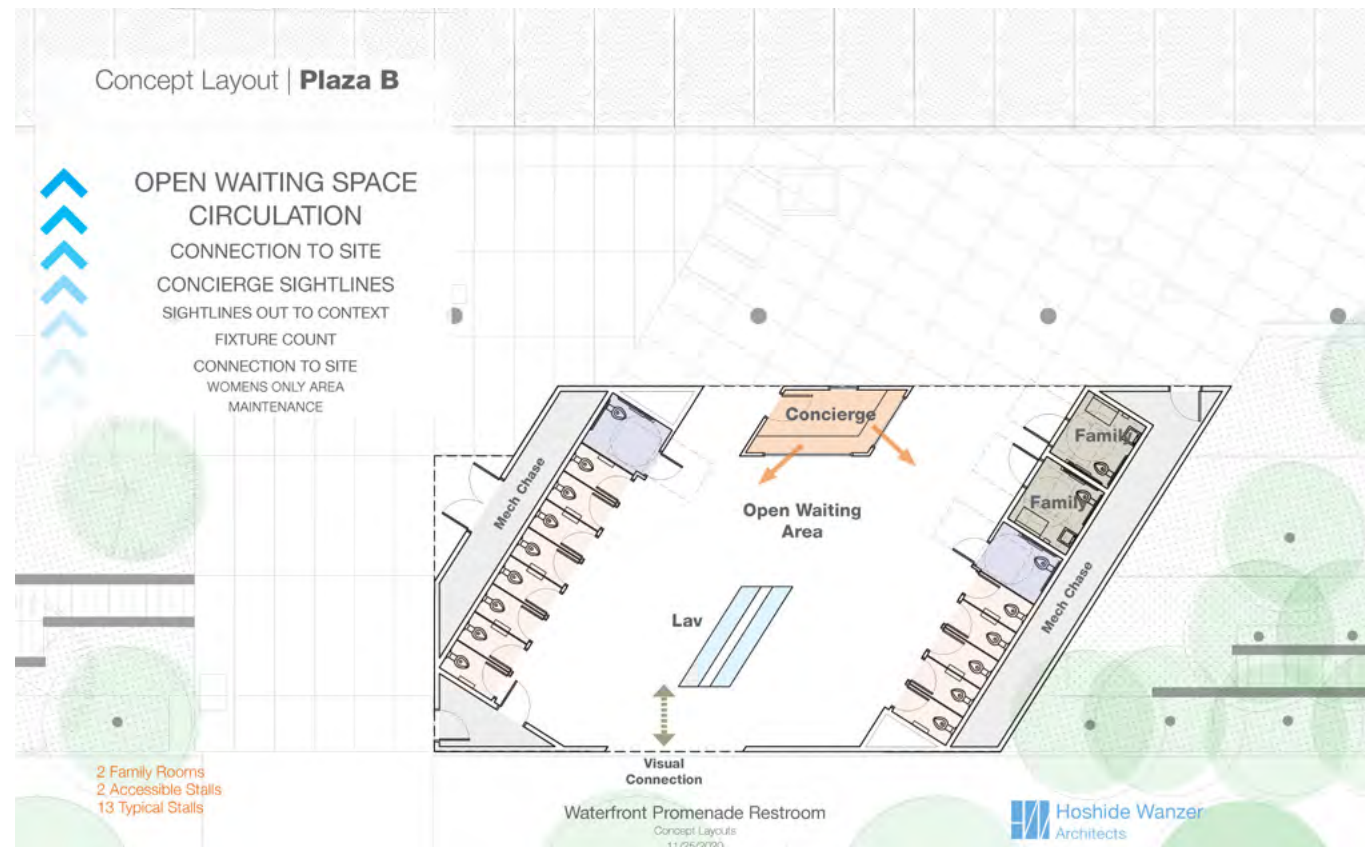
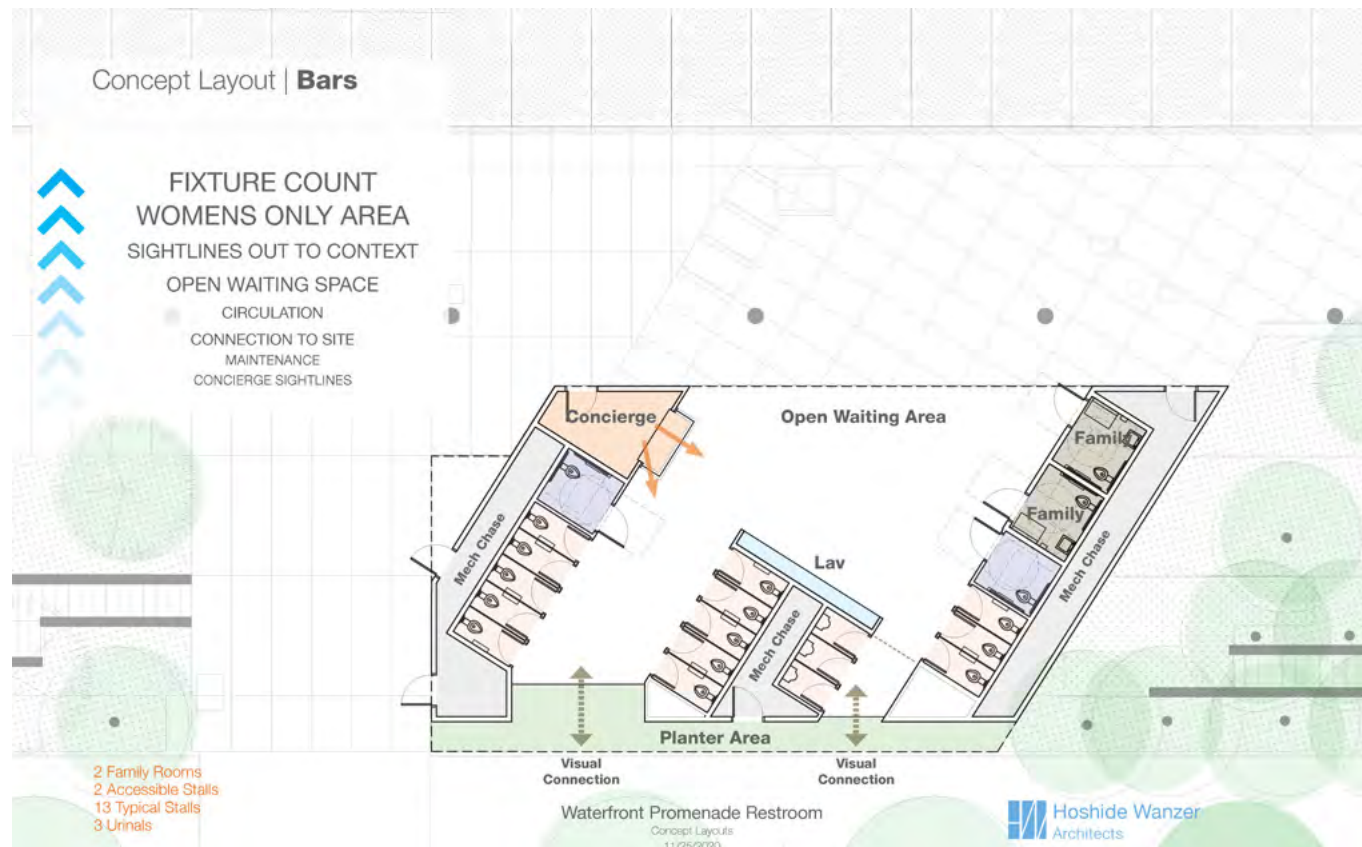
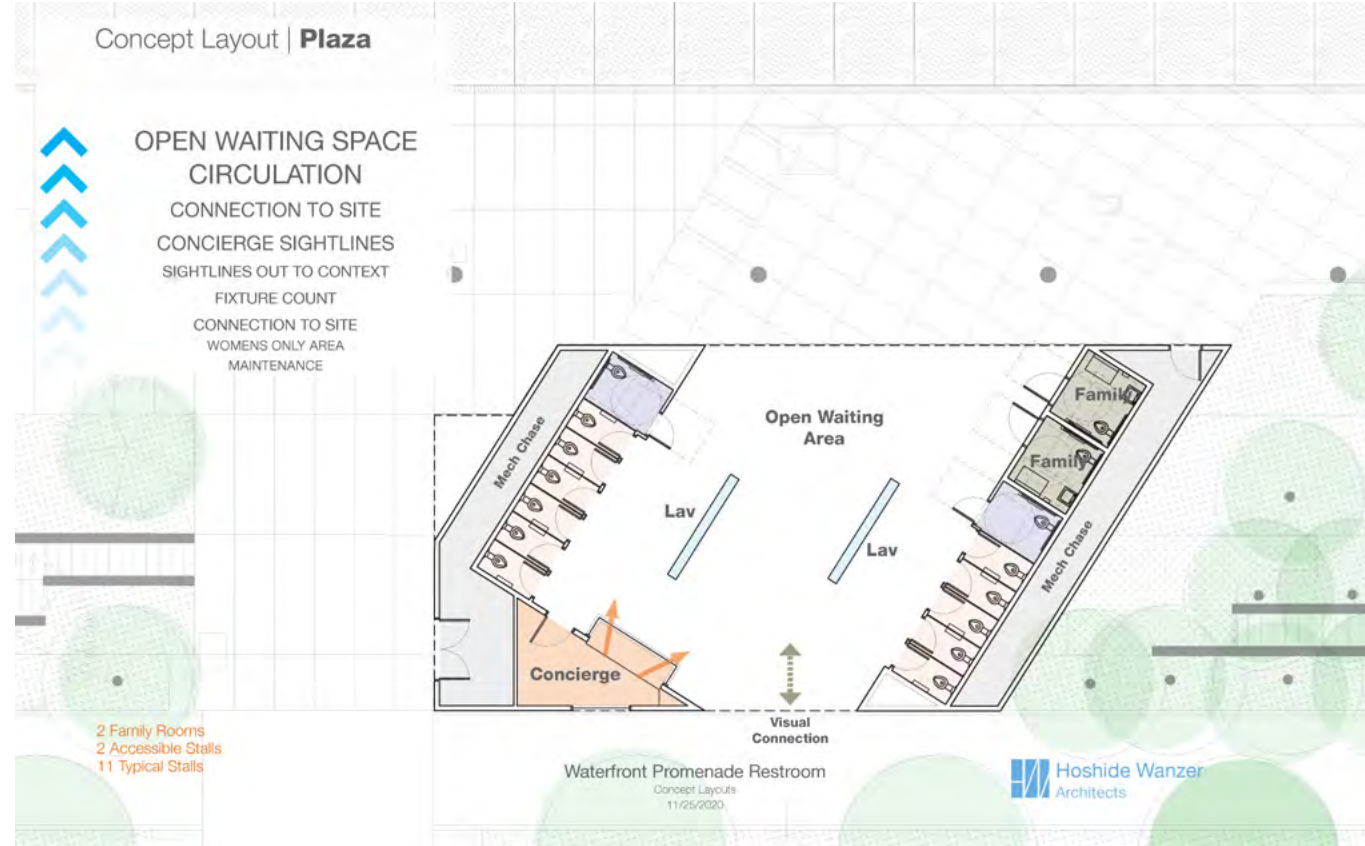
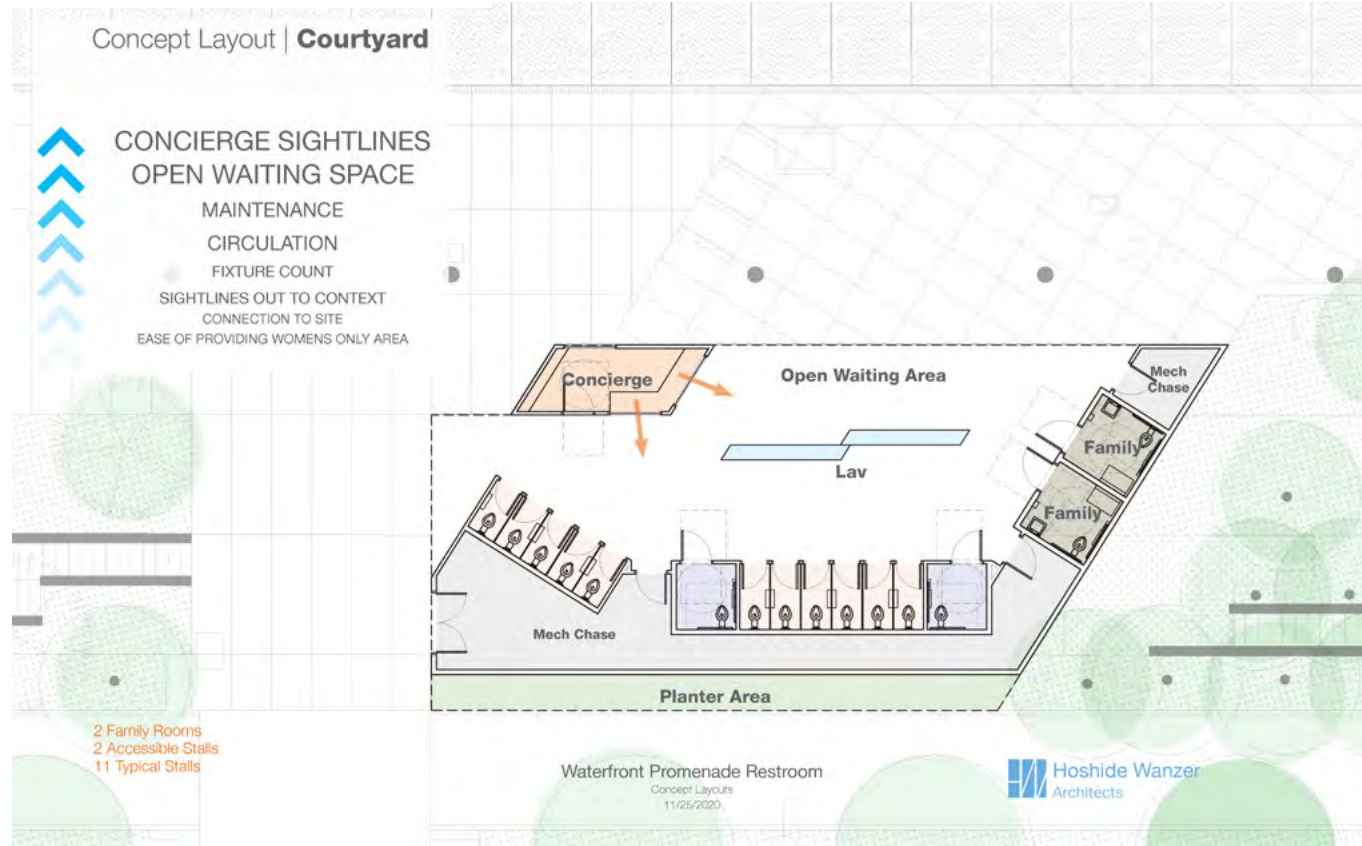
- 1 GROVE + LAWN
- 2 FITZGERALD FOUNTAIN
 - FOUNTAIN BASIN:
 - SPILL OUT SPACE:
- 3 OPEN AREA
- 4 WATER'S EDGE
- 5 PLAY AREA
- 6 NEAR-SHORE OPENING



COMMUNITY INPUT

INITIAL IDEAS

4 CONCEPTS



COMMUNITY INPUT

Initial outreach as part of Pier 58 on-line open house: November/December 2020

Four focus group meetings targeting parents, disability and homeless advocacy groups, LGBTQIA and immigrant/refugee communities: January/February 2021

Key Feedback:

- Design facility in a way that feels inviting and safe to all people regardless of background.
- Provide as much room for movement as possible with multiple access points in and out of the facility. Make sure access points are visible and have separation from driveways and the cycle track.
- Provide extra room in stalls of all types for people with mobility needs, but also because families and visitors to the Waterfront may have more bags or belongings to enjoy and use in the facilities
- Provide wayfinding to the restroom and good, clear signage within the restroom
- Important that attendant/concierge station is visible and that staff is well-trained to deal with various user needs and situations
- Provide thoughtful amenities: variable fixture heights, touchless fixtures are preferred, restrict views to open doors, provide grab-bars in all stalls, provide adequate lighting, places to sit, places to hang belongings and store larger items
- Alarms and security features need to accommodate different senses and needs
- A design that incorporates historical elements, connects to the environment and Coast Salish heritage would be appreciated

COMMUNITY INPUT

Accessibility Roundtable Discussion: April 28, 2021

Key Feedback:

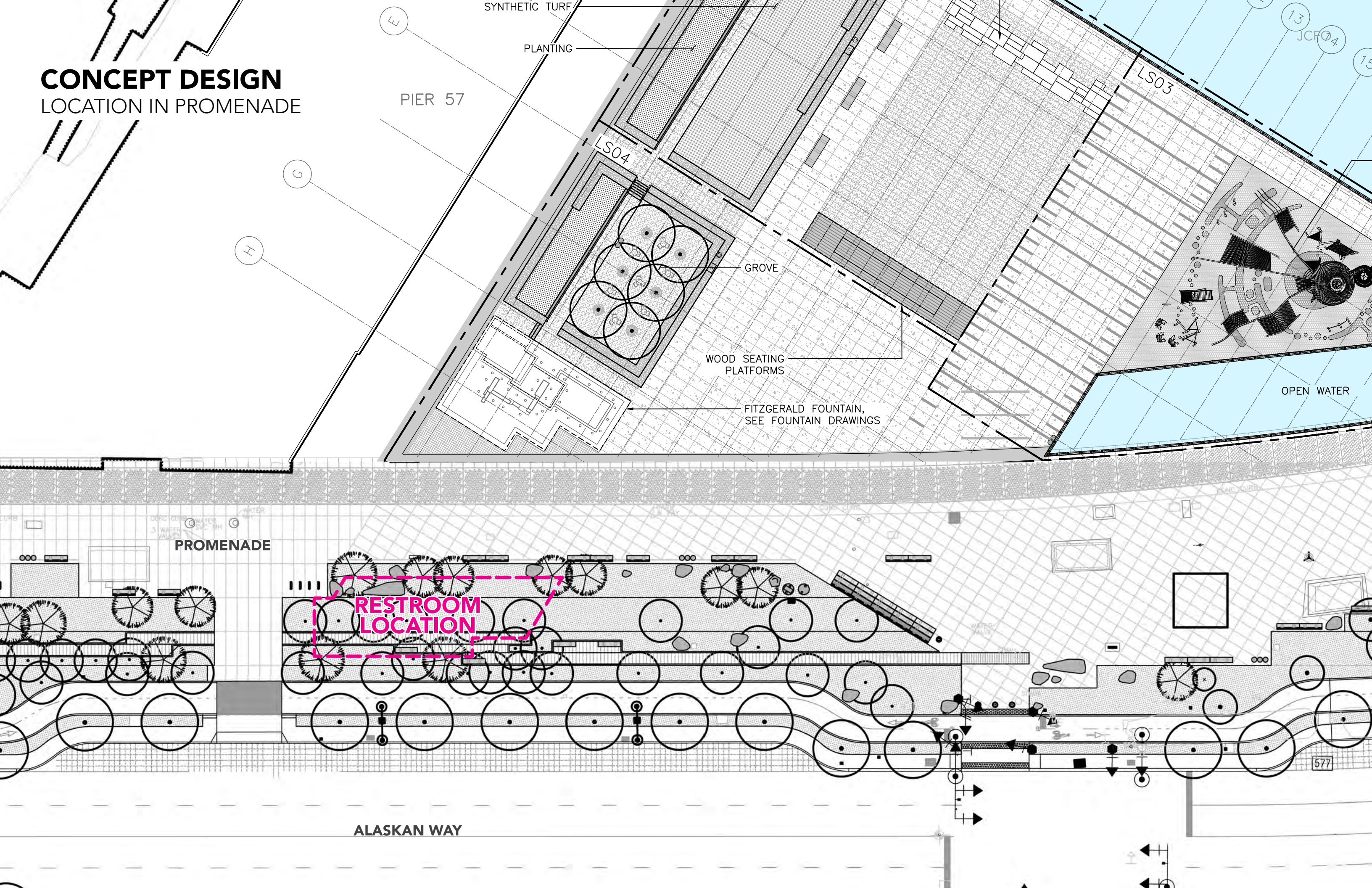
- Attendees who also attended groups appreciated the design direction and the larger than typical stall sizes
- Request to consider including adult changing table in one of the multi-purpose stalls and to remove a baby changing table in one multi-purpose stall
- Reminders to make sure there are a diversity of fixture heights and lavatory options
- A request to consider options nearby for service animal needs
- A reminder to make sure lighting and ventilation take into account winter weather

On-going discussions with Seattle Parks and Recreation and Friends of Waterfront Seattle (joint operators of the Waterfront Restroom Facility)

CONCEPT DESIGN DEVELOPMENT

CONCEPT DESIGN

LOCATION IN PROMENADE



CONCEPT DESIGN
PROMENADE MODIFICATIONS

**EXISTING LIGHT
PENETRATING SURFACE**

PROMENADE

SEATING

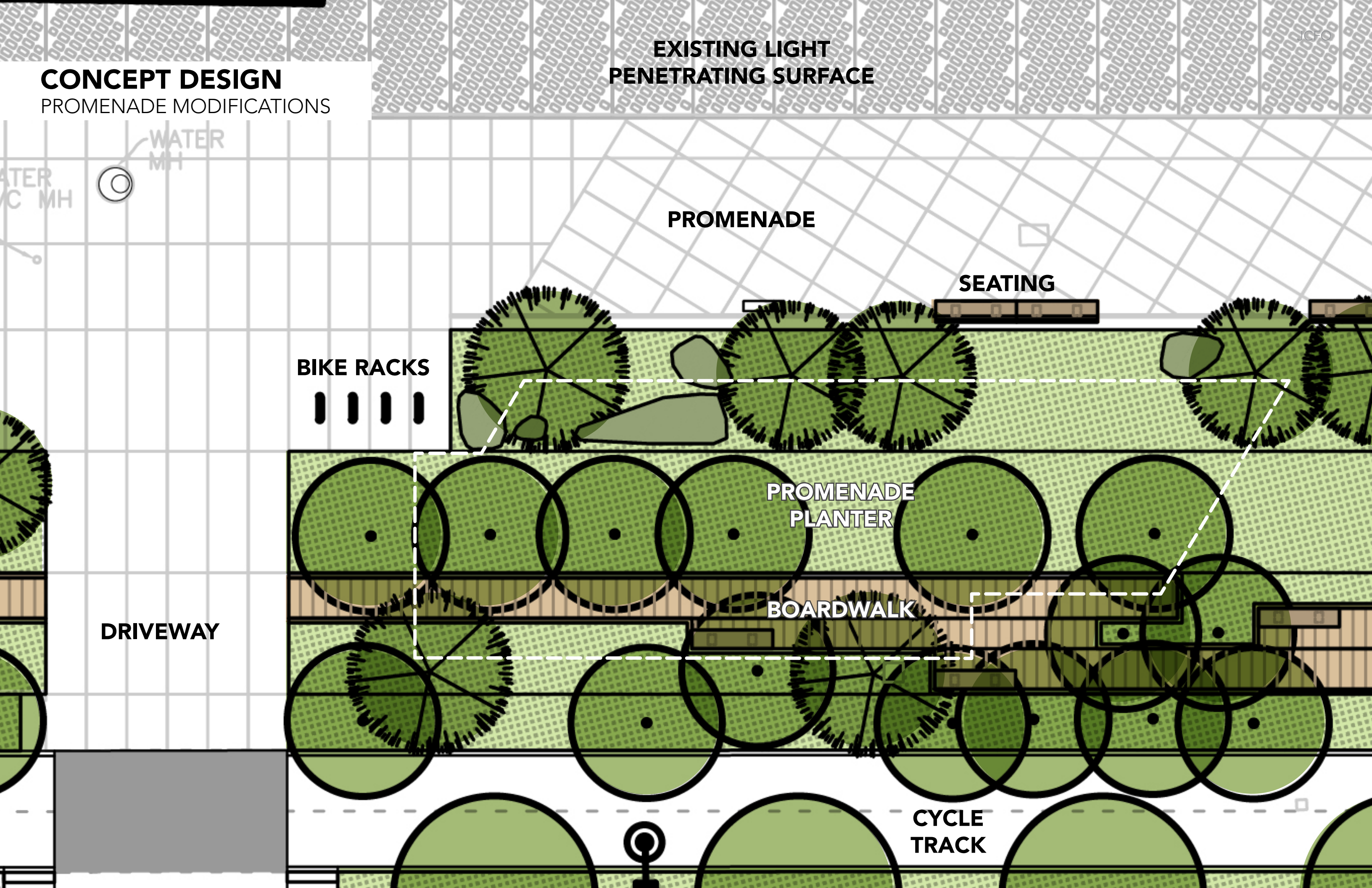
BIKE RACKS

**PROMENADE
PLANTER**

BOARDWALK

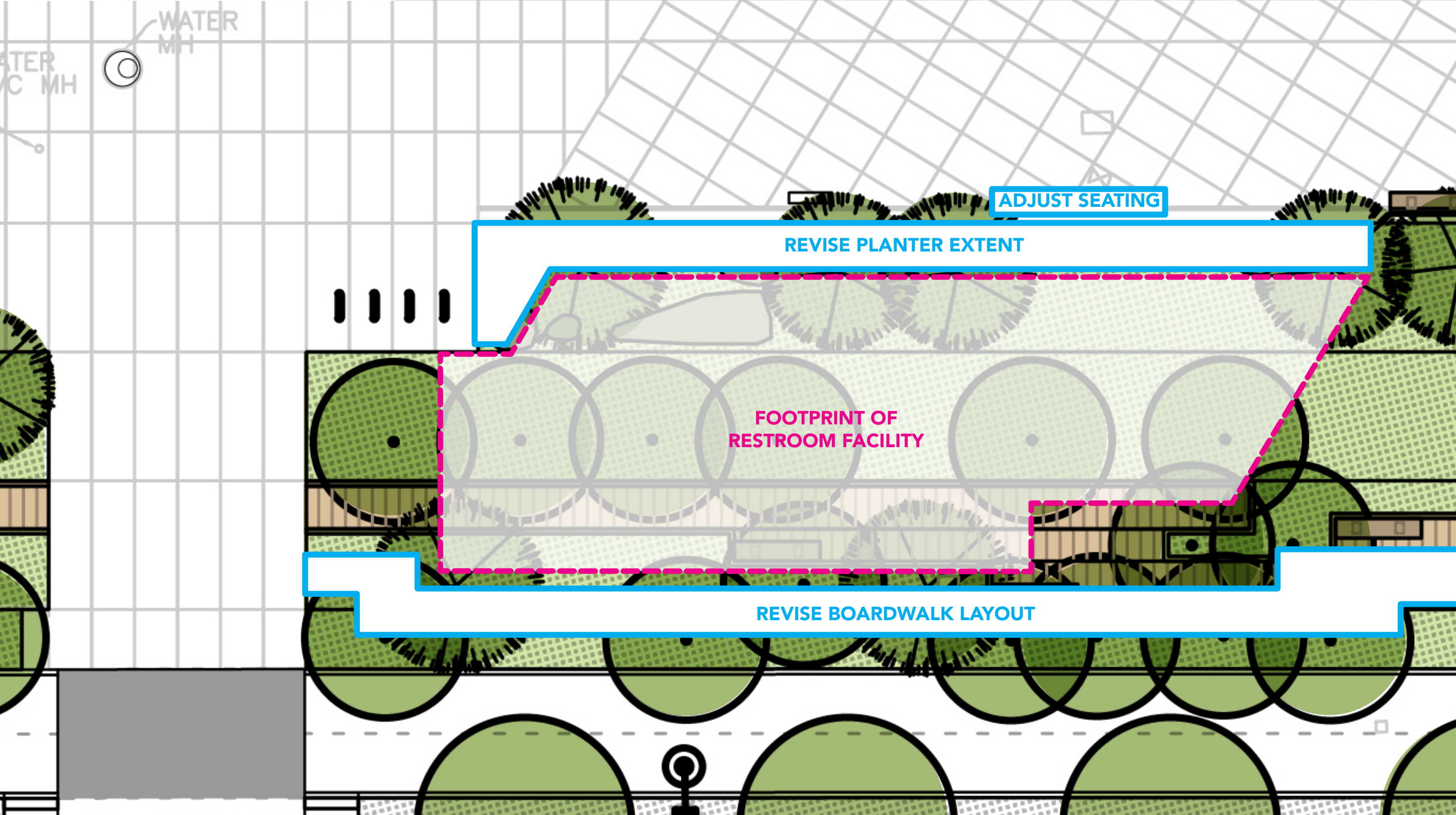
DRIVEWAY

**CYCLE
TRACK**



CONCEPT DESIGN

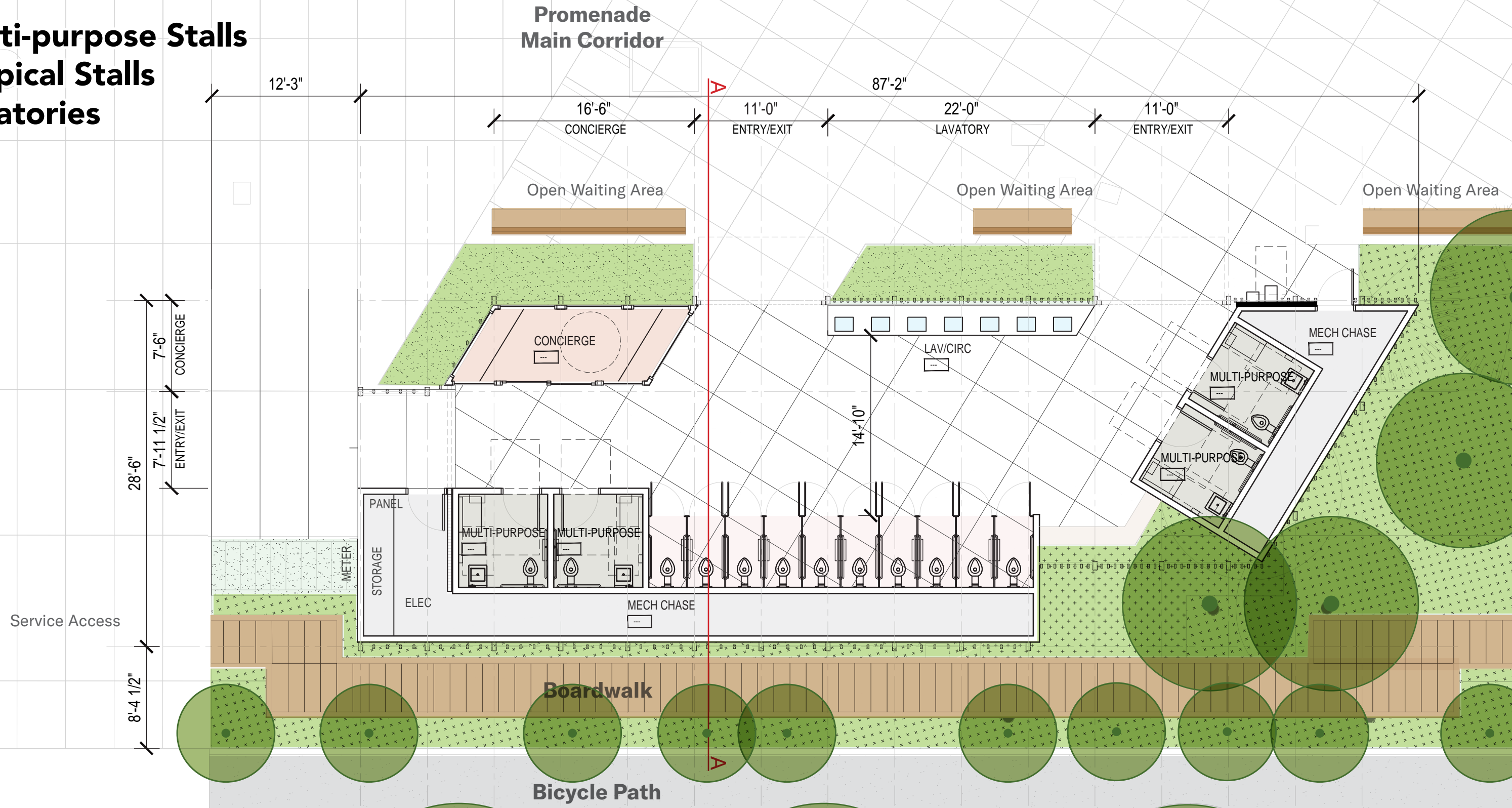
PROMENADE MODIFICATIONS



CONCEPT DESIGN

FLOOR PLAN

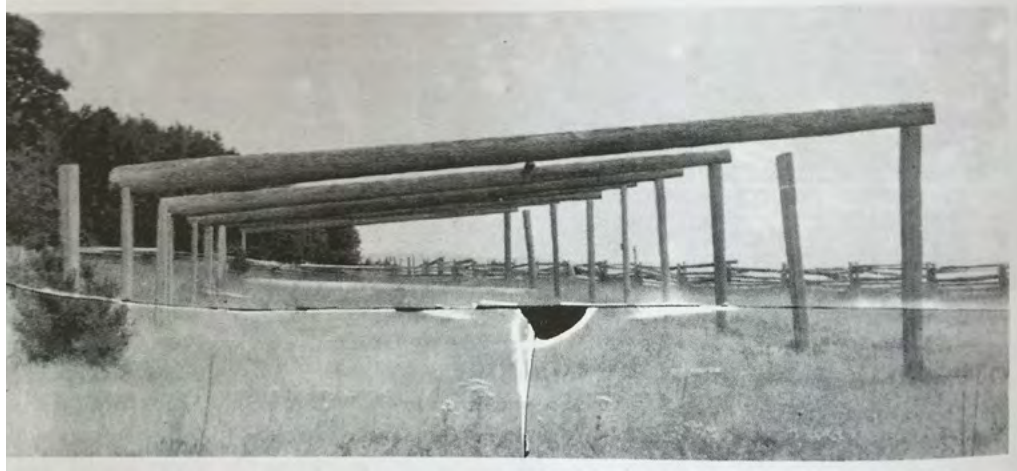
4 Multi-purpose Stalls
10 Typical Stalls
7 Lavatories



HW

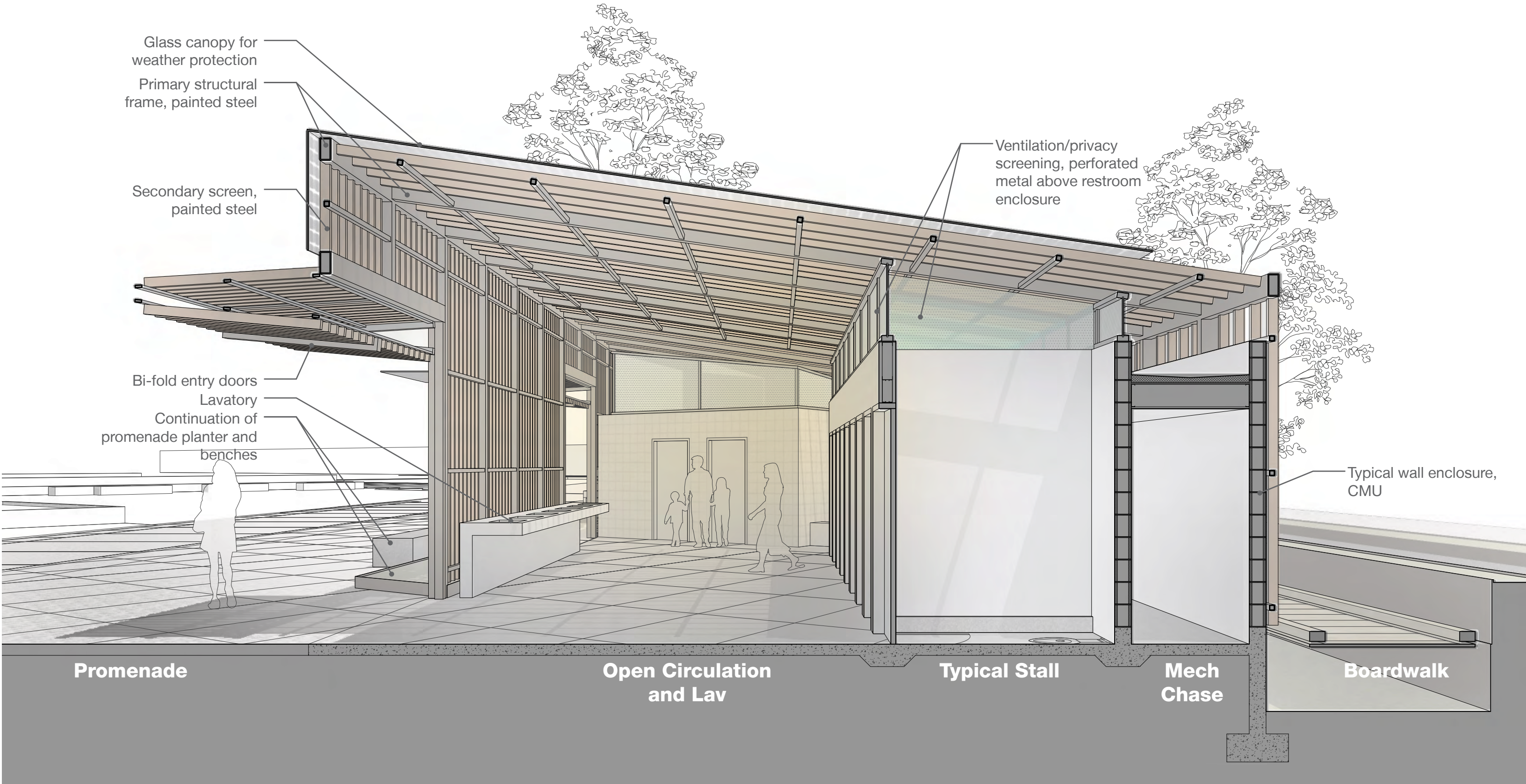
CONCEPT DESIGN

INSPIRATION



CONCEPT DESIGN

SECTION ELEVATION LOOKING NORTH



CONCEPT DESIGN OVERVIEW



CONCEPT DESIGN
VIEW FROM UNION STREET LOOKING SOUTH



CONCEPT DESIGN

VIEW FROM PIER 58 LOOKING EAST



CONCEPT DESIGN
VIEW FROM PIER 57 LOOKING NORTH



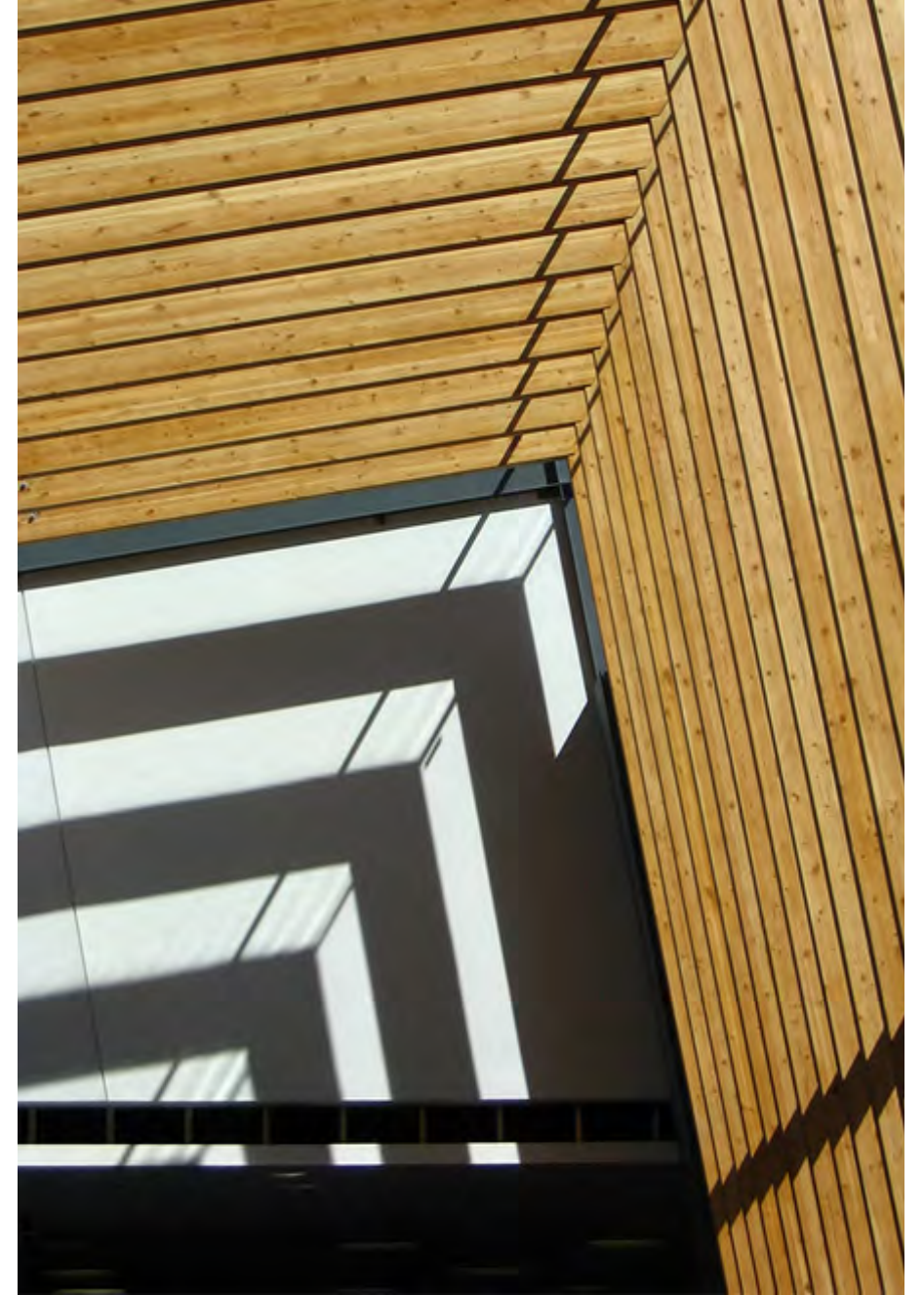
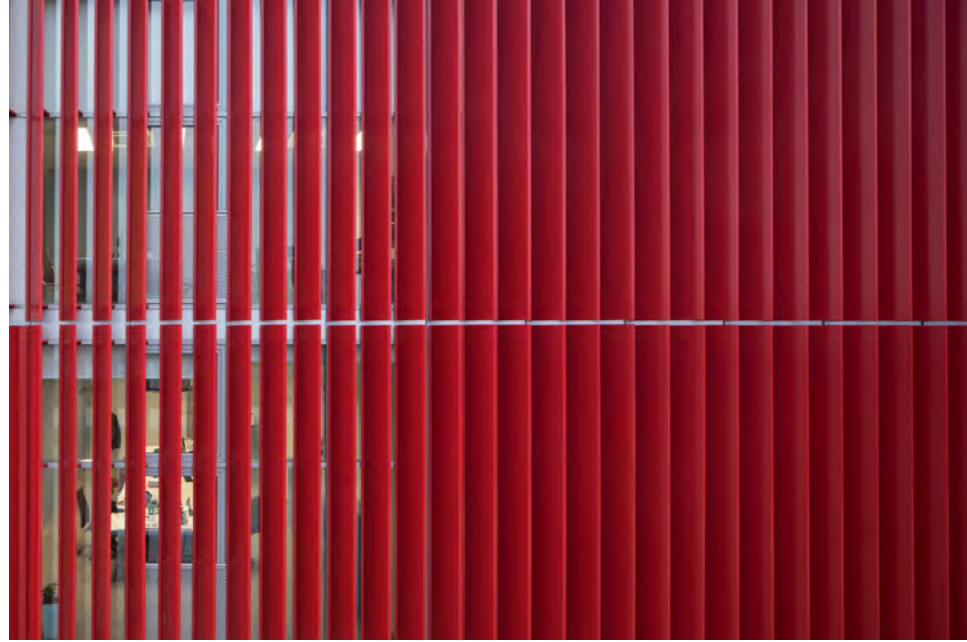
CONCEPT DESIGN
VIEW FROM EAST SIDE LOOKING WEST



MATERIALS

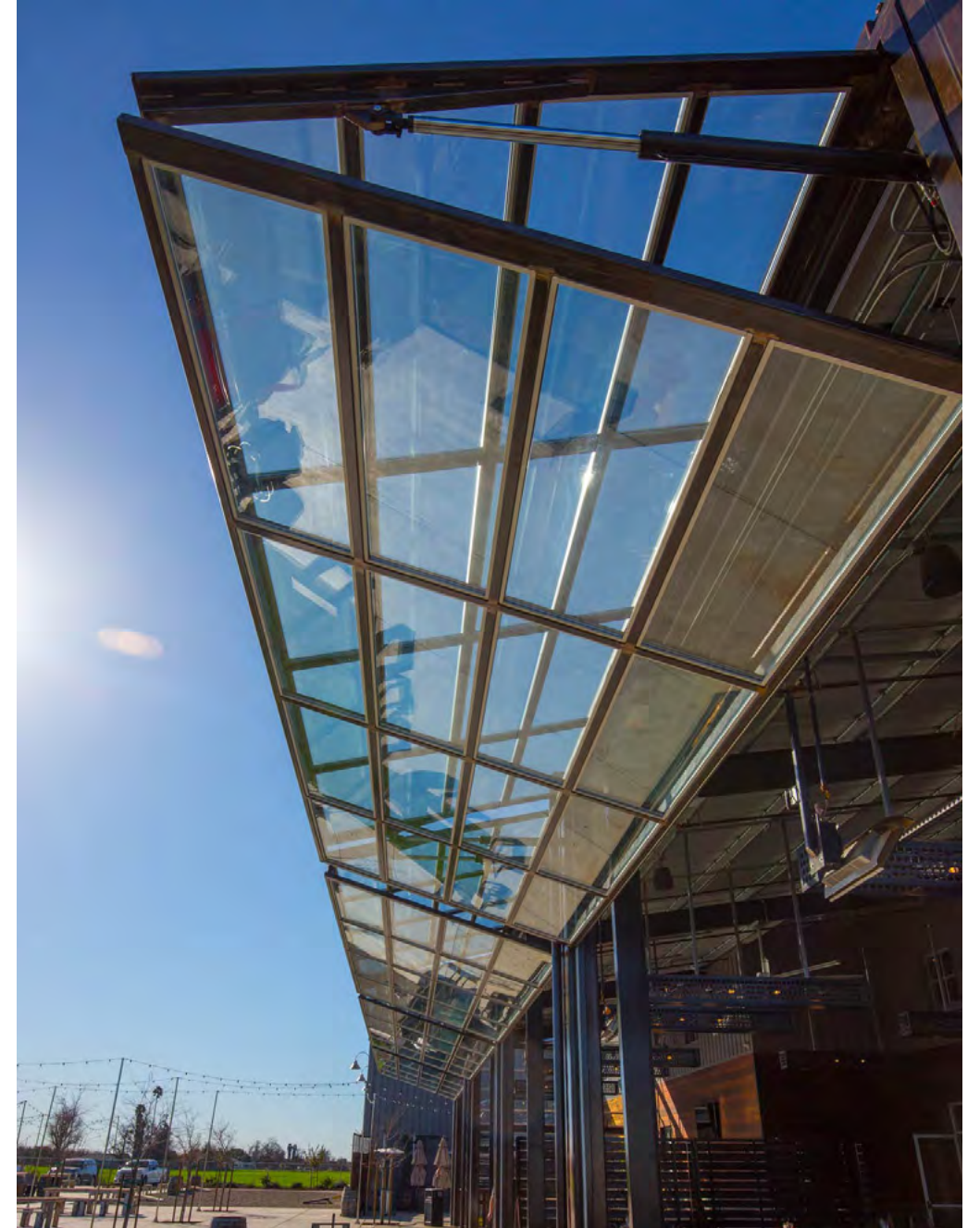
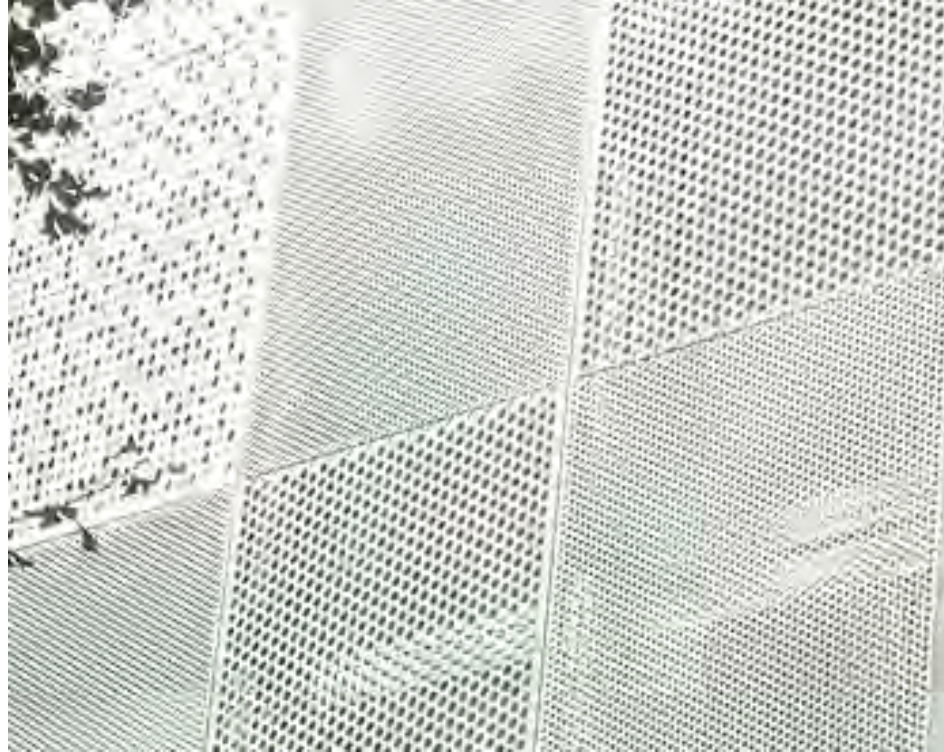
CONCEPT DESIGN

MATERIAL PALETTE - PAINTED STEEL, LIGHT/SHADOW



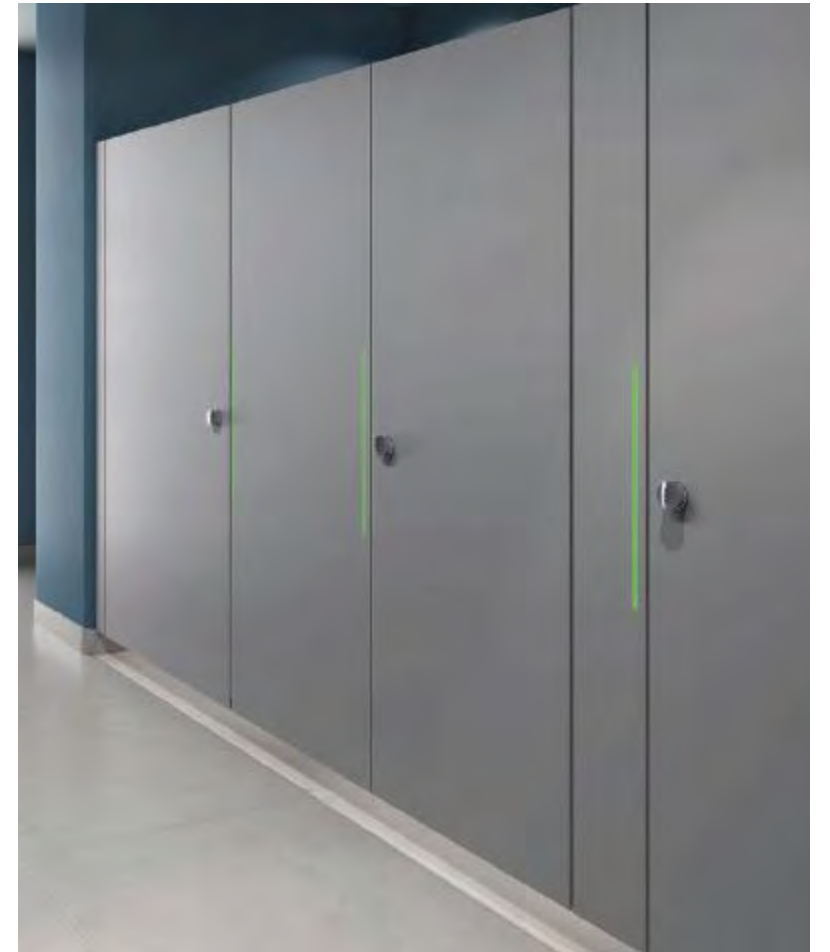
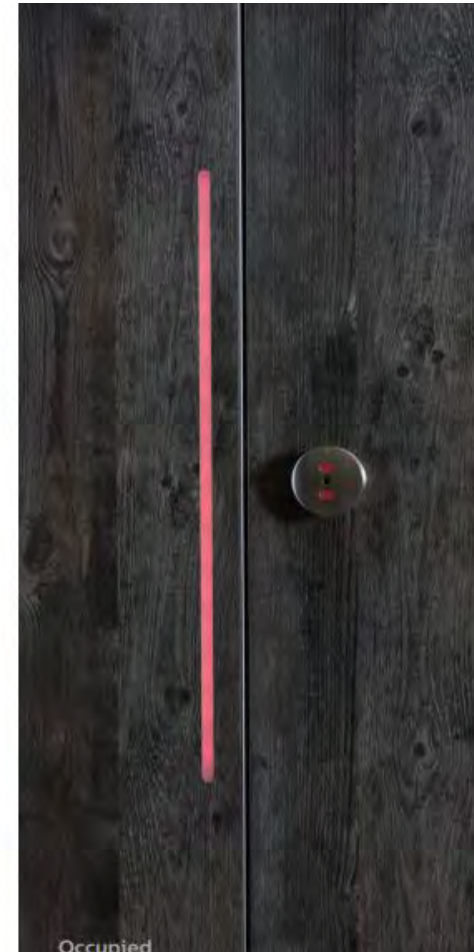
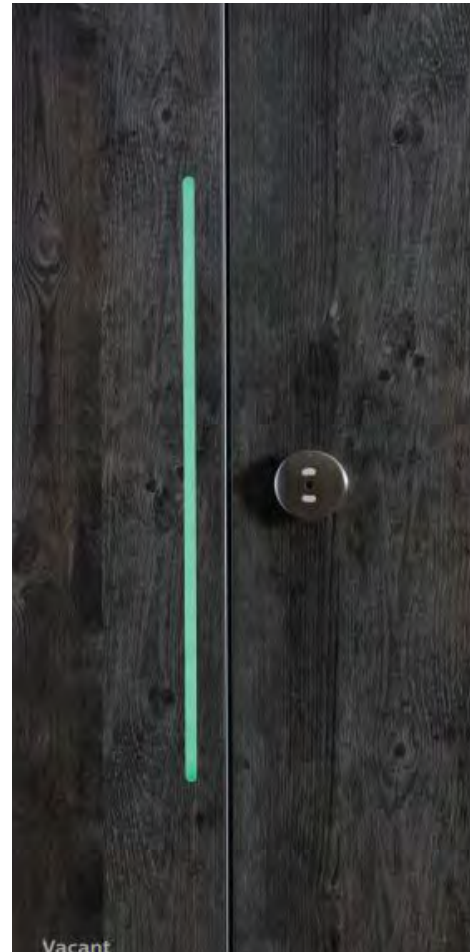
CONCEPT DESIGN

MATERIAL PALETTE - CMU, PERFORATED VENTILATION/PRIVACY SCREEN, BI-FOLD ENTRY DOOR



CONCEPT DESIGN

MATERIAL PALETTE - PARTITION, STALL OCCUPANCY, TOUCHLESS FIXTURES



CONCEPT DESIGN

LIGHTING



The lighting for the restroom will utilize the play between private solid and open circulation spaces as well as the slat patterning. We want to achieve an open structure that will have a lantern quality at night.

NEXT STEPS

NEXT STEPS

INCORPORATE FEEDBACK FROM SDC SUBCOMMITTEE

CONTINUE TO WORK WITH PARKS AND FRIENDS TO FINALIZE DESIGN

IDENTIFY STRATEGIC OPPORTUNITIES TO ENGAGE PUBLIC DURING DESIGN

INCORPORATE REVISIONS INTO PROMENADE DESIGN

COORDINATE FUTURE SDC DISCUSSIONS