



WASHINGTON STATE CONVENTION CENTER

URBAN DESIGN MERIT

Seattle Design Commission - April 16, 2020



- WSCC Addition, Ninth Avenue and Pine Street, Downtown Seattle.
- Approximately doubling size of existing WSCC; 255,000 sf exhibit space, 125,000 sf meeting rooms, 60,000 sf ballroom.
- Construction start summer 2018; completion January 2022. Open for business mid-2022.
- SDC review 2016 and 2017.
- Contiguous subterranean loading dock enabled by three alley and two below-grade street vacations.

DENNY TRIANGLE

Boren Ave

Jerry Avenue

9th Avenue

Olive Way

CAPITOL HILL

OFFICE
Site C

RESIDENTIAL
Site B

Site A

WASHINGTON STATE
CONVENTION CENTER
ADDITION

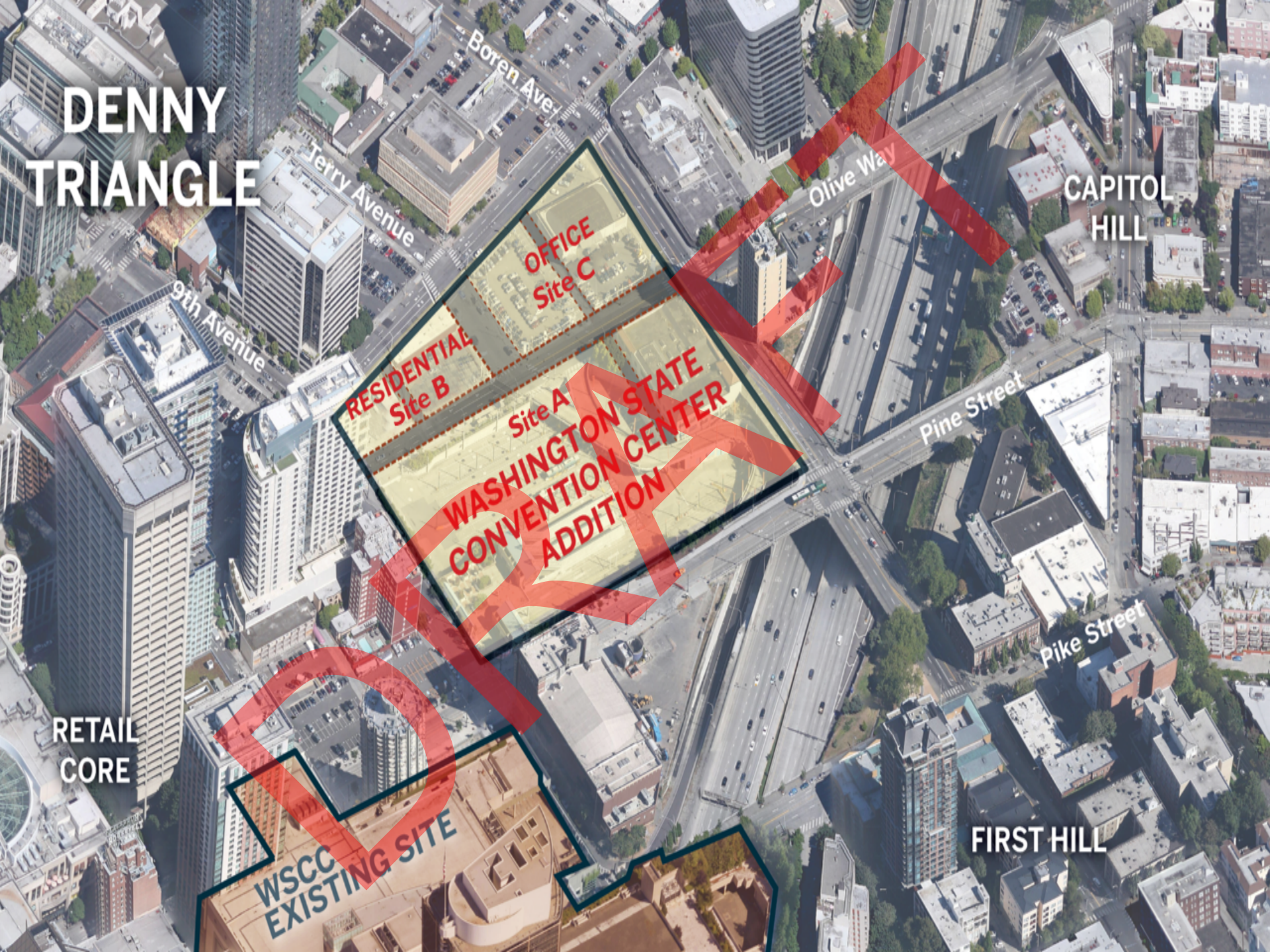
Pine Street

Pike Street

RETAIL
CORE

WSCC
EXISTING SITE

FIRST HILL



WSCC ADDITION ART PROGRAM - UDM SELECTION PROCESS

Locations

- Site A
 - Olive Way parking garage door
 - Boren Avenue parking garage door
- Site B
 - Howell Street loading dock door and mechanical screen
- Site C
 - Howell Street glass wall
 - Boren Avenue loading dock door
 - Loading dock wall between Boren and Terry
 - Terry Avenue loading dock door

Selection Process:

- Invitational
- Diverse pool of 64 artists from Washington state
- Recommendations made by WSCC Addition Art Advisors, WSCC Board Art Committee and project team
- List of 64 narrowed to a shortlist of 10 by review panel
- Review panel interviewed 10 artists
- 5 artists selected

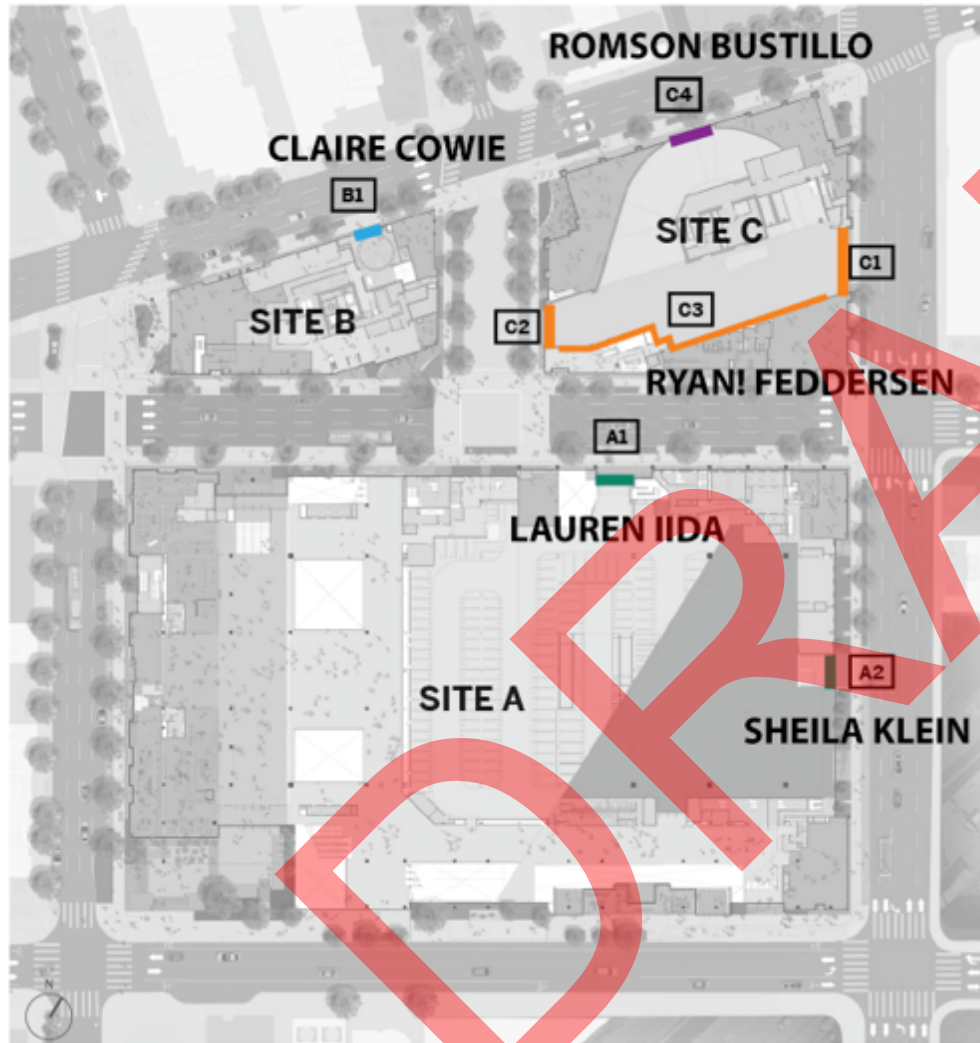
WSCC ADDITION ART PROGRAM - UDM SELECTION PROCESS

Review Panel:

- **Blake Haygood**, Visual artist, Curator and Collections Manager at Seattle Office of Arts and Culture, WSCC Addition Art Advisor
- **Negarra Kudumu**, Manager of Public Programs at the Frye Art Museum, Essayist, Curator, WSCC Addition Art Advisor
- **Kristine Matthews**, Principal - Studio Matthews, Chair, University of Washington, Associate Professor Visual Communication Design
- **Cathy McClure**, Visual artist, WSCC Addition Artist Consultant
- **Kate Rufe Westbrook**, AIA, Associate - LMN
- **Rafael Soldi**, Visual artist and Co-Founder of the Strange Fire Collective
- **Asia Tail**, Visual artist, WSCC Addition Art Advisor

BOREN / OLIVE WAY / TERRY AVE / HOWELL ST

GRAPHIC DOORS AND WALLS



A1	LAUREN IIDA
A2	SHEILA KLEIN
B1	CLAIRE COWIE
C1	RYAN! FEDDERSEN
C2	
C3	
C4	ROMSON BUSTILLO

WSCC ADDITION ART PROGRAM – UDM ARTIST BRIEF

ARTIST BRIEF SUMMARY

SCOPE

- Create architecturally integrated graphic artworks for seven locations on exterior façades and garage entries of the planned WSCC Addition and Co-Development sites.
- Project team to assist artists on solutions given materials, code, safety, Design Review Board and SDC requirements, and technical constraints.

EXPECTATIONS

- Create an engaging art experience for pedestrians.
- Artists should respond to the WSCC Addition Art Program Vision and Goals.
- Develop a meaningful series of artworks responding to the site, the city and the region.

WSCC ADDITION ART PROGRAM – VISION

Drawing inspiration from the Pacific Northwest's diverse cultures and communities, the WSCC Addition art program will play a crucial role in creating a connective core in Seattle's downtown landscape.

Artists will share their interpretations of the character and essence of the region, from its natural beauty and innovative spirit to its shifting urban environments. Instead of a place where people pass through on their way to somewhere else, the Addition will be a dynamic hub where locals and visitors can pause, experience the best of the Northwest, exchange ideas and engage in conversations.

The Addition art program will connect communities and neighborhoods and highlight the artistic vitality of this region.

WSCC ADDITION ART PROGRAM – GOALS

GOALS

- Enrich and contribute to the understanding of art and culture of the Northwest.
- Provide a cultural resource for the community.
- Resonate with people of diverse backgrounds, visitors to Seattle and local communities.
- Encourage these communities to engage with art and each other in a way that inspires repeat visits, inviting shared experiences.
- Enhance and support the project design.

WSSC ADDITION ART PROGRAM – UDM TIMELINE

Selection Process

Artists and Project Team Meetings

Artist Design Development

Conceptual Proposal Approvals

SDC Presentation

Final Design and Board Approval

Implementation

May - August 2018

September - December 2018

2018 - 2019

2019

April 16, 2020

2020

2020-2023



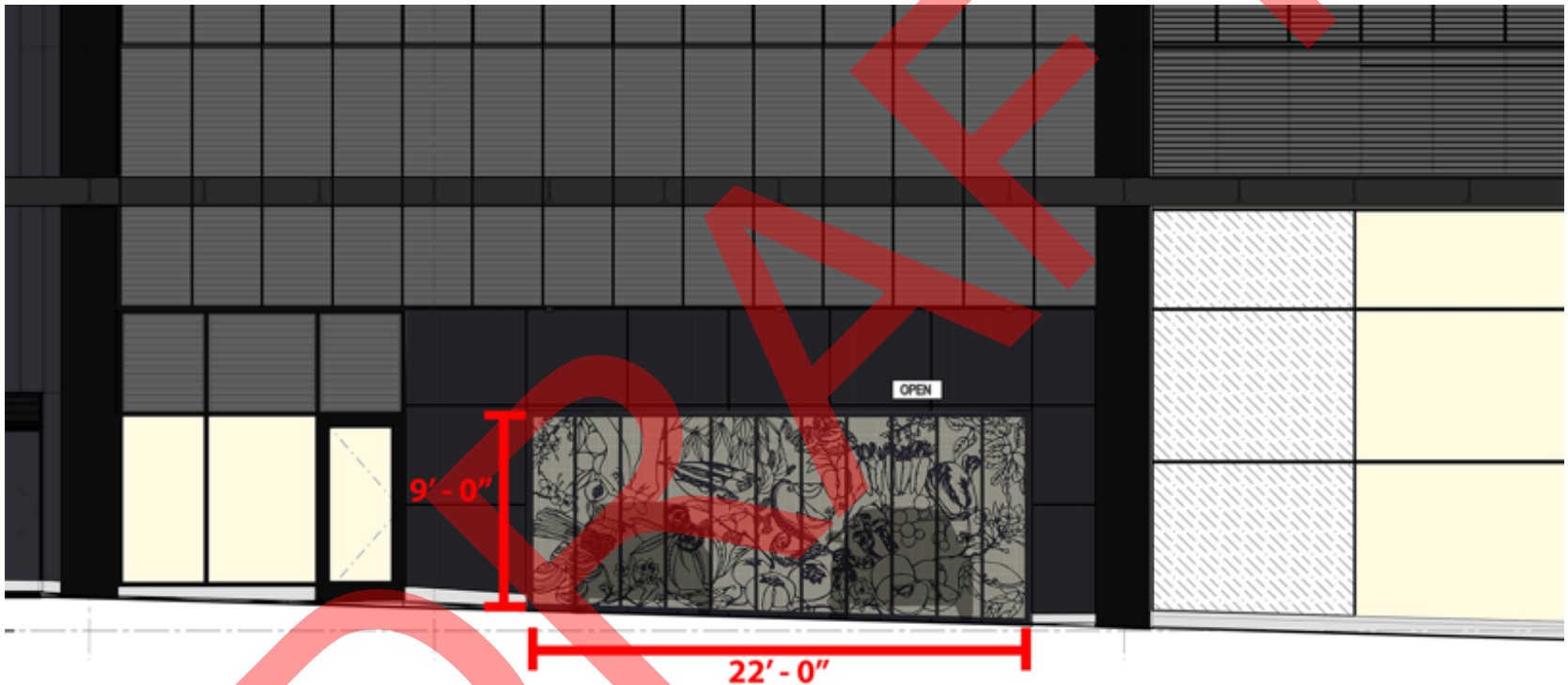


A1 Parking Access on Olive Way





A1 Parking Access on Olive Way



Door Style: Vertical lift door, single panel.

Door material: Custom cut steel, square wire mesh backing. Highly durable powder-coated paint to match adjacent architectural metal panels. Graffiti coating.

Typical Operations: Generally open during day, closed at night.



A1 Parking Access on Olive Way

Lauren Iida's design concept focuses on selective flora and fauna of the Pacific Northwest and the relationship they have to her Japanese heritage and to Seattle, her home town.

Her hand-cut paper artwork incorporates plants, fruits, vegetables and seafoods originally from Japan that now thrive in the Seattle/PNW region.

As a Japanese-American child, Lauren grew up watching her Japanese grandmother prepare foods with meticulous care. Her grandmother's hands are depicted in the upper left corner of the composition.



Original hand-cut paper artwork



A1 Parking Access on Olive Way





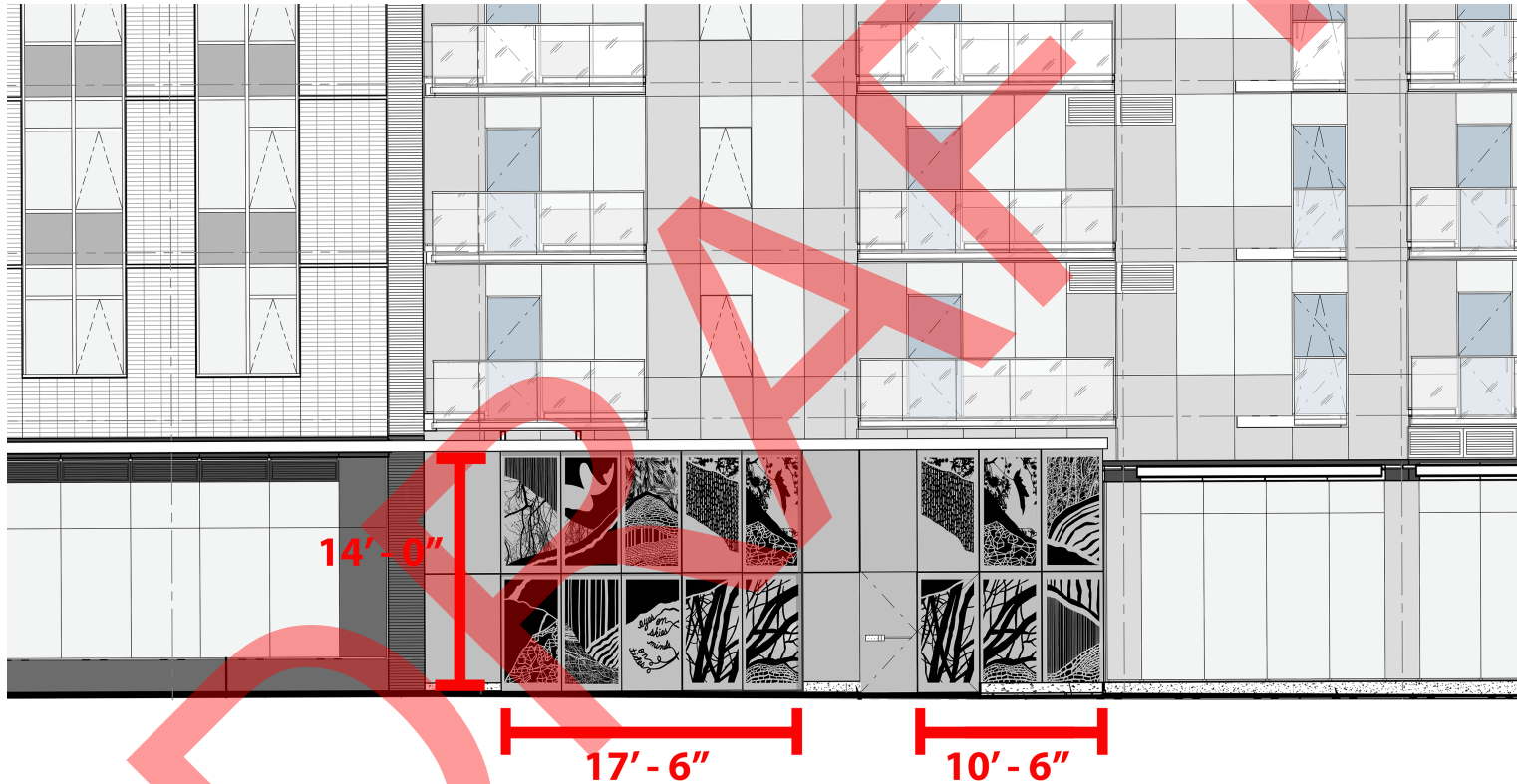
A1 Parking Access on Olive Way





B1 Residential Loading Door + Mechanical Screen



B1 Residential Loading Door + Mechanical Screen

Door Style: Vertical lift door, single panel.

Door Material: Custom cut steel with square wire mesh backing. Highly durable powder-coated paint to match adjacent architectural metal panels. Graffiti coating.

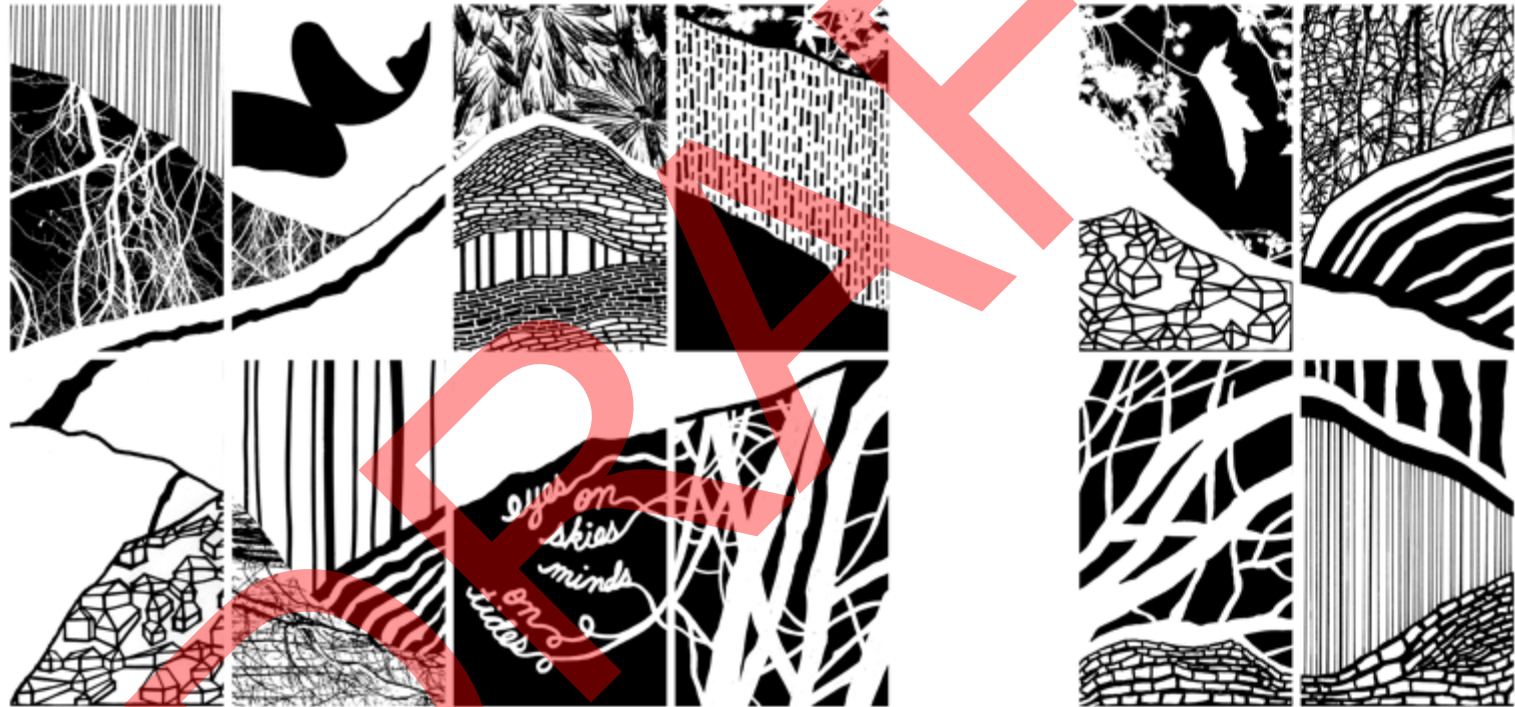
Operations: Door operations to be determined by building owner (not WSCC). Screen fixed, conceals gas manifold - one hinged door panel opens only for system maintenance or meter reading.



B1 Residential Loading Door + Mechanical Screen



Original drawing for door design

**B1** Residential Loading Door + Mechanical Screen

Claire Cowie's design concept uses the panels as intentional frames with a border dictated by the structure. Her linework represents the immediate area's hilly terrain and movement of water, repeating motifs that hint at ecological balance. There are also outlines of houses and brickwork, referencing our need for affordable housing, our need to care for one another and the collective power of community.



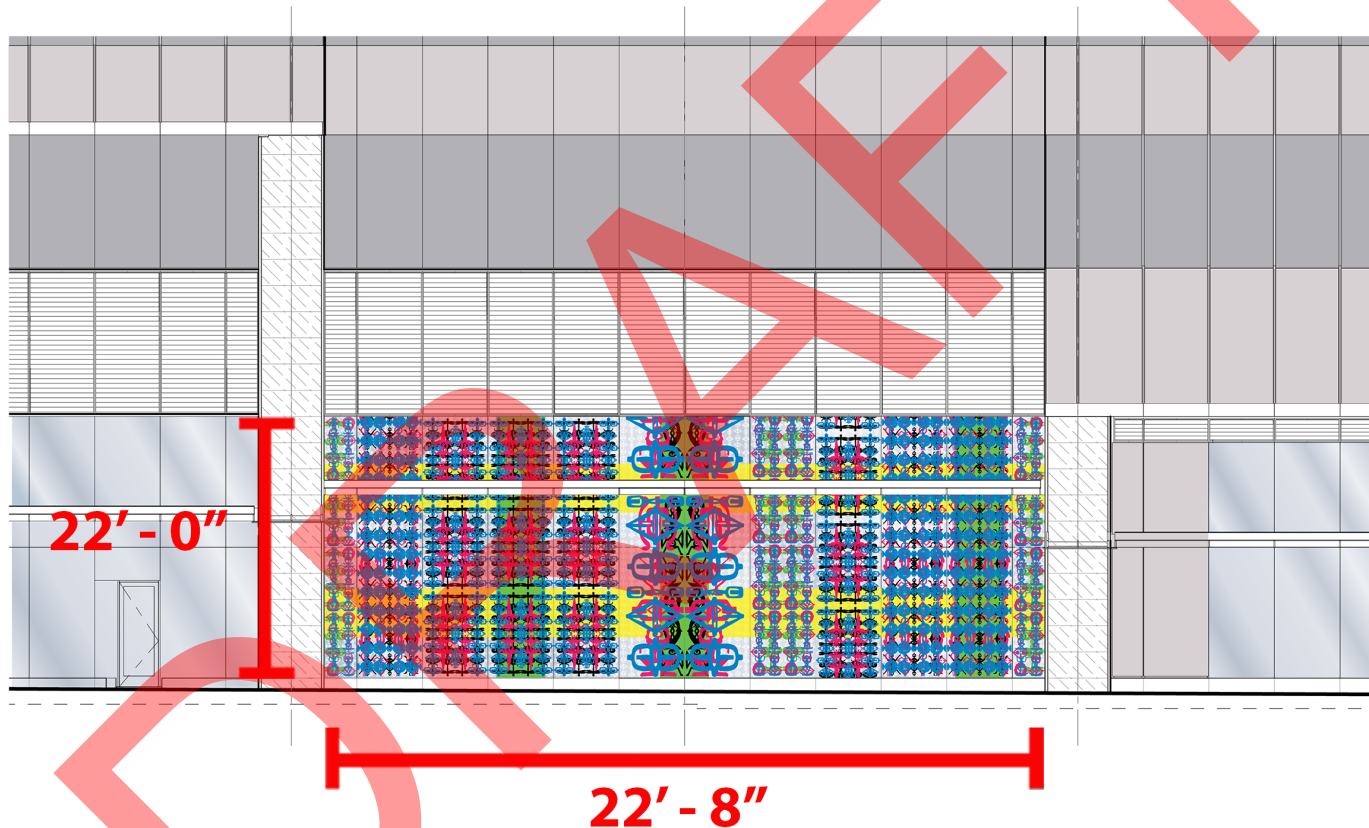
B1 Residential Loading Door + Mechanical Screen



C4 Office Glass Wall at Truck Ramp on Howell Street



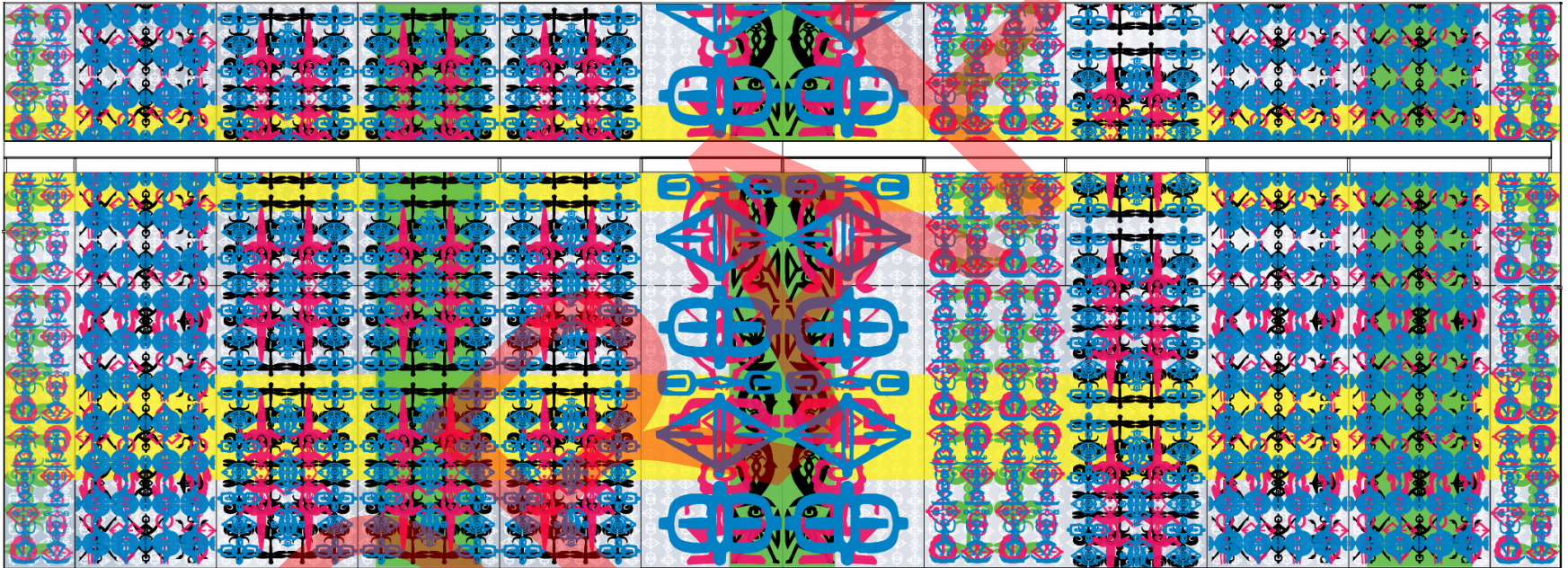
C4 Office Glass Wall at Truck Ramp on Howell Street



Material: Insulated glass panels with custom ceramic frit art on glass layers. UV resistant.

Operations: Loading dock ramp activity will vary and will correspond to events.










C4 Office Glass Wall at Truck Ramp on Howell Street

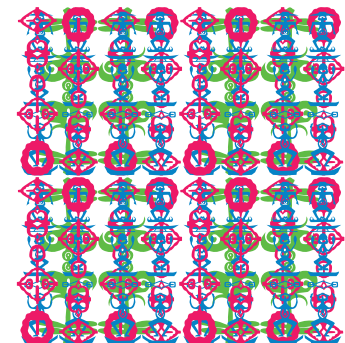
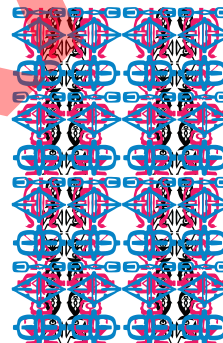
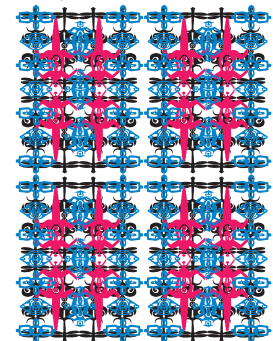
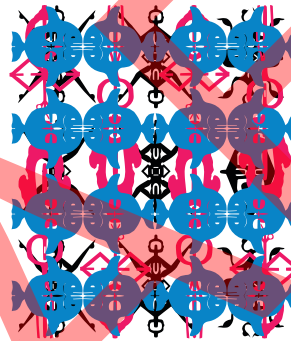


Romson Bustillo's design concept is inspired by the Indigenous ikat weaving and applique fabric traditions of the Philippines. He is creating new designs to share historical, contemporary and evolving stories tied to the Pacific Northwest and its peoples. His piece layers the stories of Indigenous cultures, immigrants and more recent arrivals from the surrounding neighborhoods and beyond.

C4 Office Glass Wall at Truck Ramp on Howell Street



Form	Symbolism/Visual Cues/Ideas
	Sample 1 Romson Regarde Bustillo, 2019
	Dragonfly, Water, Berry, Human, Transformation, Hope
	Corn, Wheat, Crocodile, Human, Agriculture, Technology, Vision
	Humans, Fish, Community, Working Together, Togetherness
	Planes, Clouds, Face, Arrival, Departure, Travel, Global Community, Technology
	Ginger, Turmeric, Galangal, Ginseng, Roots, Human, Bear, Heat, Courage, Health
	Human, Bird, Canoe, Paddle, Welcome, Past, Present, Future, Travel, Migration, Messenger
	Orca, Fish, Bird, Life, Ocean, Rivers, Sky
	Shellfish, Mussels, Clams, Geoduck, Shore, Garlic, Berry, Humans
	Fish, Fishing, Fish Market, Human, Vision

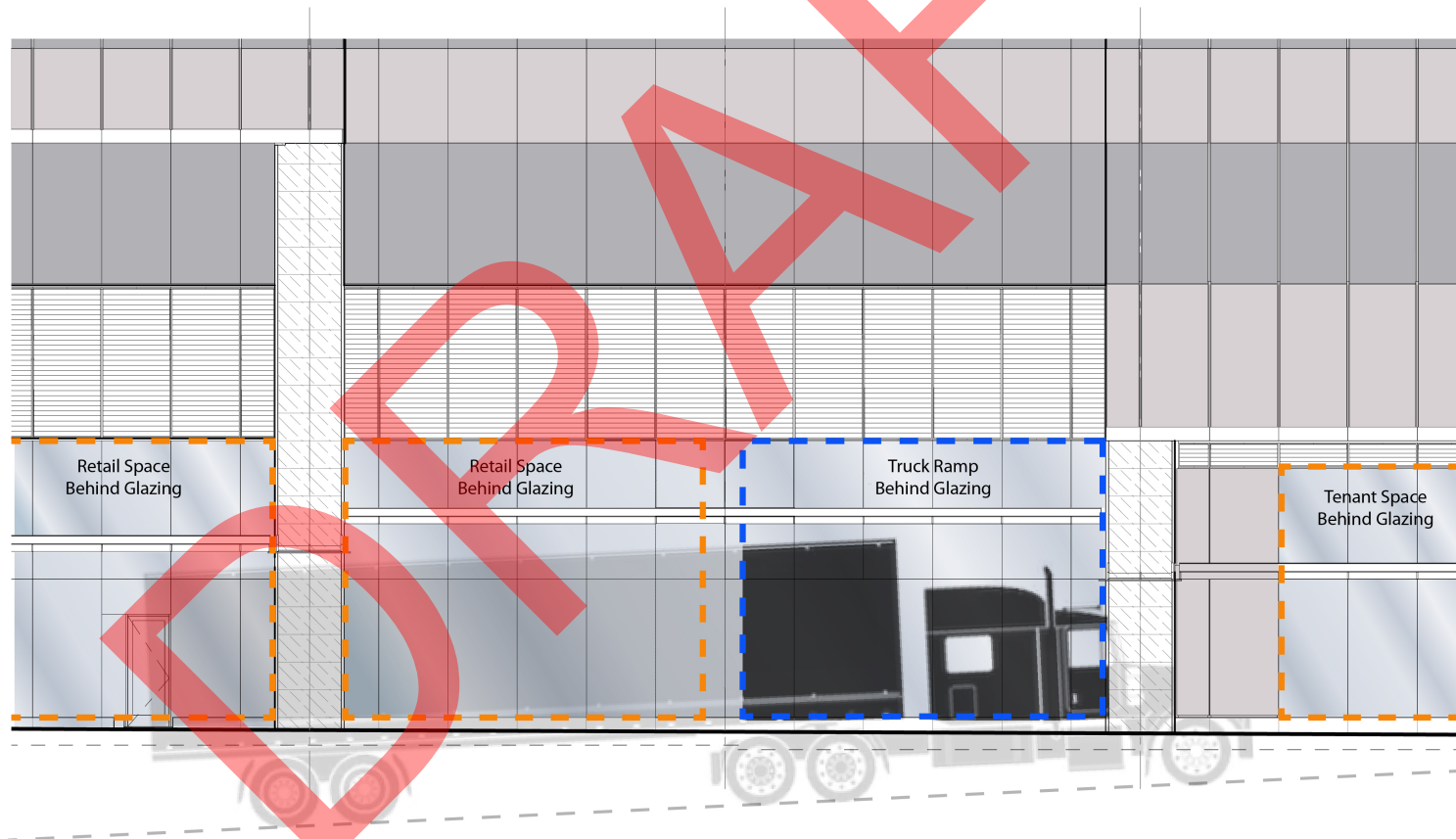
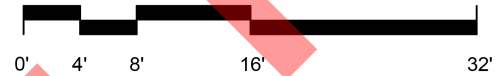


Romson Bustillo's symbolism, visual cues

C4 Office Glass Wall at Truck Ramp on Howell Street



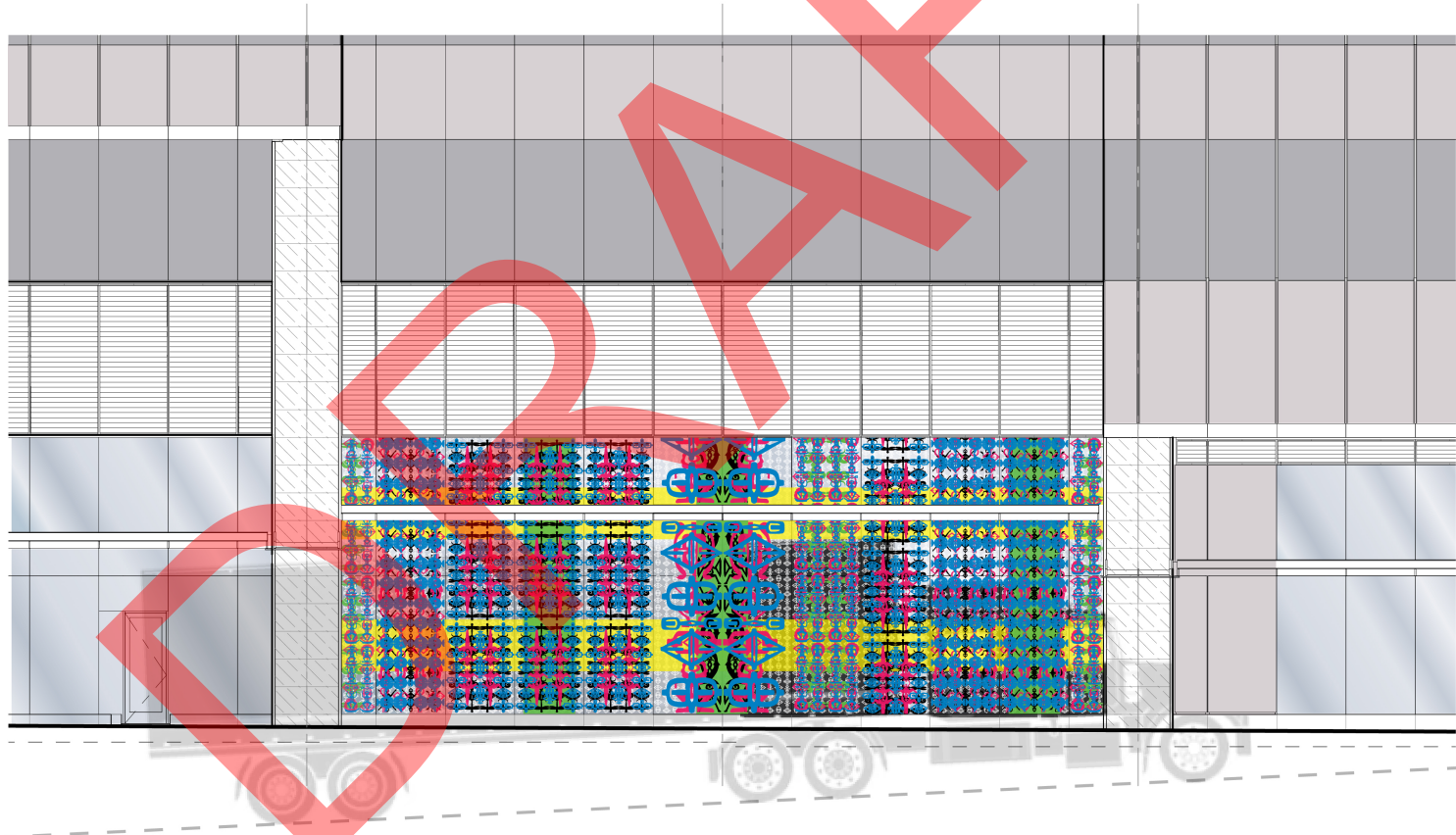
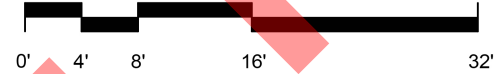
SCALE: 1/8" = 1'



C4 Office Glass Wall at Truck Ramp on Howell Street



SCALE: 1/8" = 1'



C4 Office Glass Wall at Truck Ramp on Howell Street





C1

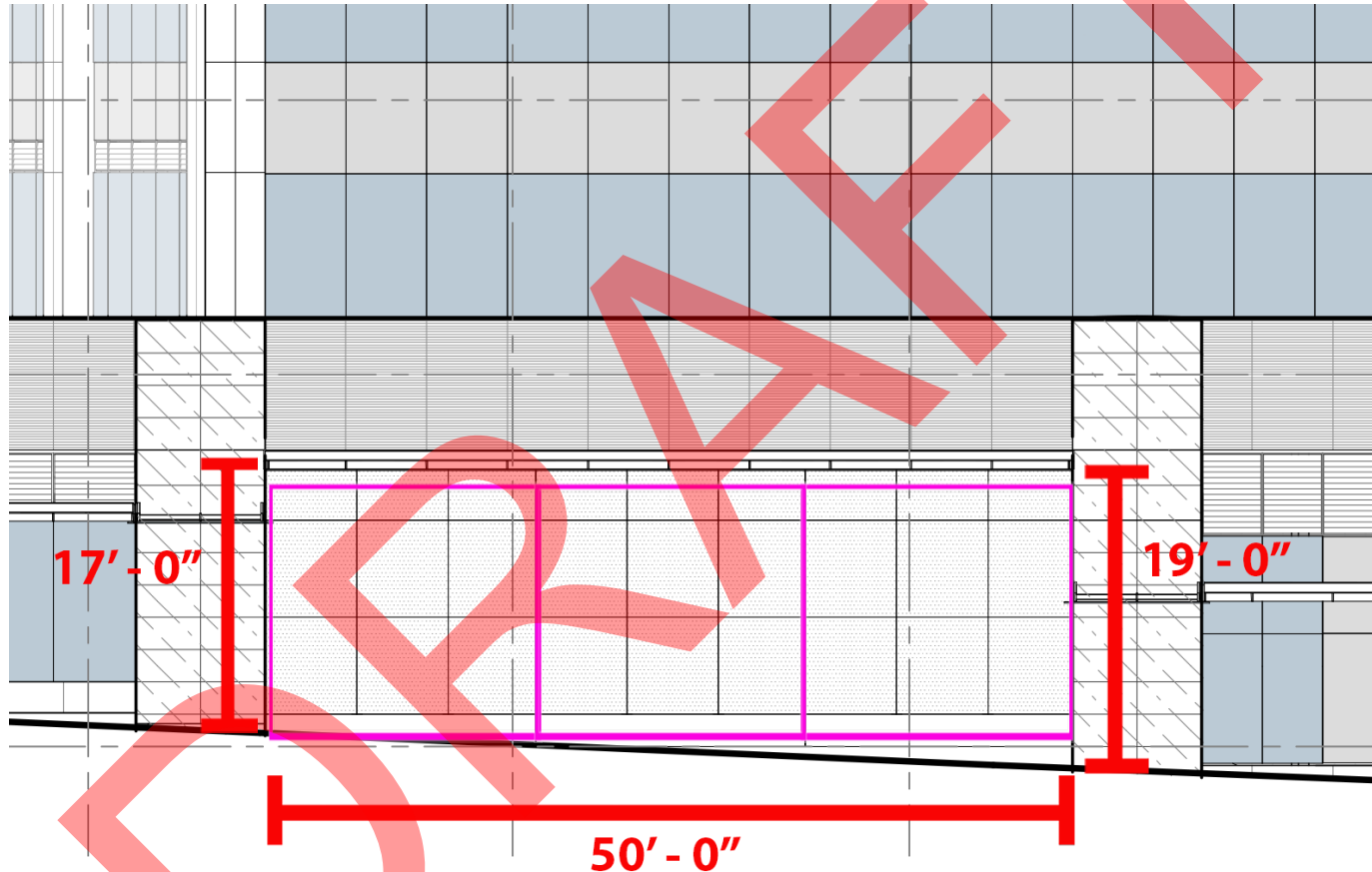
Boren Avenue Loading Dock Door





C1

Boren Avenue Loading Dock Door



Door Style: Sliding hangar door, three panels. Each panel 16'-8"

Door Material: Custom cut steel, square wire mesh backing. Highly durable powder-coated paint to match adjacent architectural metal panels.

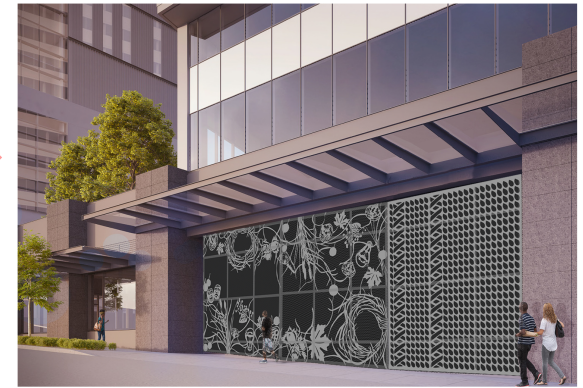
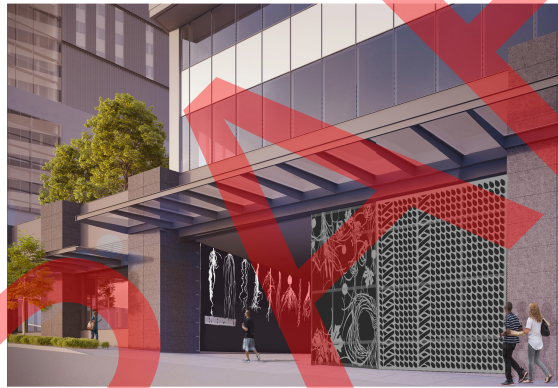
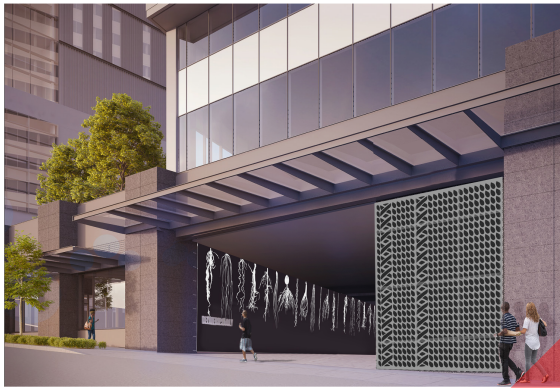
Operations: Door operations will be dictated by the frequency and size of delivery vehicles, with the door closed, open one-third, two-thirds or entirely open. Door retracts completely behind the wall, with no visible door edges.

Panel Retracted Cumulative Depth: Approximately 2'.



C1

Boren Avenue Loading Dock Door



Ryan! Feddersen's design concept is a twined basket activated by the door's movement. As the doors retract, the materials and foods visually slide into the final panel, placing all goods into the basket, which then itself retracts behind the wall when in the fully open position.

C3 Loading Dock Wall between Boren Avenue and Terry Avenue



C3 Loading Dock Wall between Boren Avenue and Terry Avenue



Ryan! Feddersen's design concept for the loading dock wall is an oversized and light reactive root system. Beginning at the base of the ceiling, the roots symbolically connect to the Convention Center. A variety of local, indigenous root systems are interspersed with roots from plants that reference the homelands of Seattle's immigrants and international visitors. Scattered throughout are man-made root systems: wires, pipes and rebar, as well as DNA, a nod to the Duwamish belief that ancestors' DNA is in the trees.

C3

Terry Avenue Loading Dock Door



C3

Terry Avenue Loading Dock Door



Door Style: Vertical Bifold

Door Material: Custom cut steel with square wire mesh backing. Highly durable powder-coated paint to match adjacent architectural metal panels. Graffiti coating.

Operations: Opened for departure of trucks from loading dock.

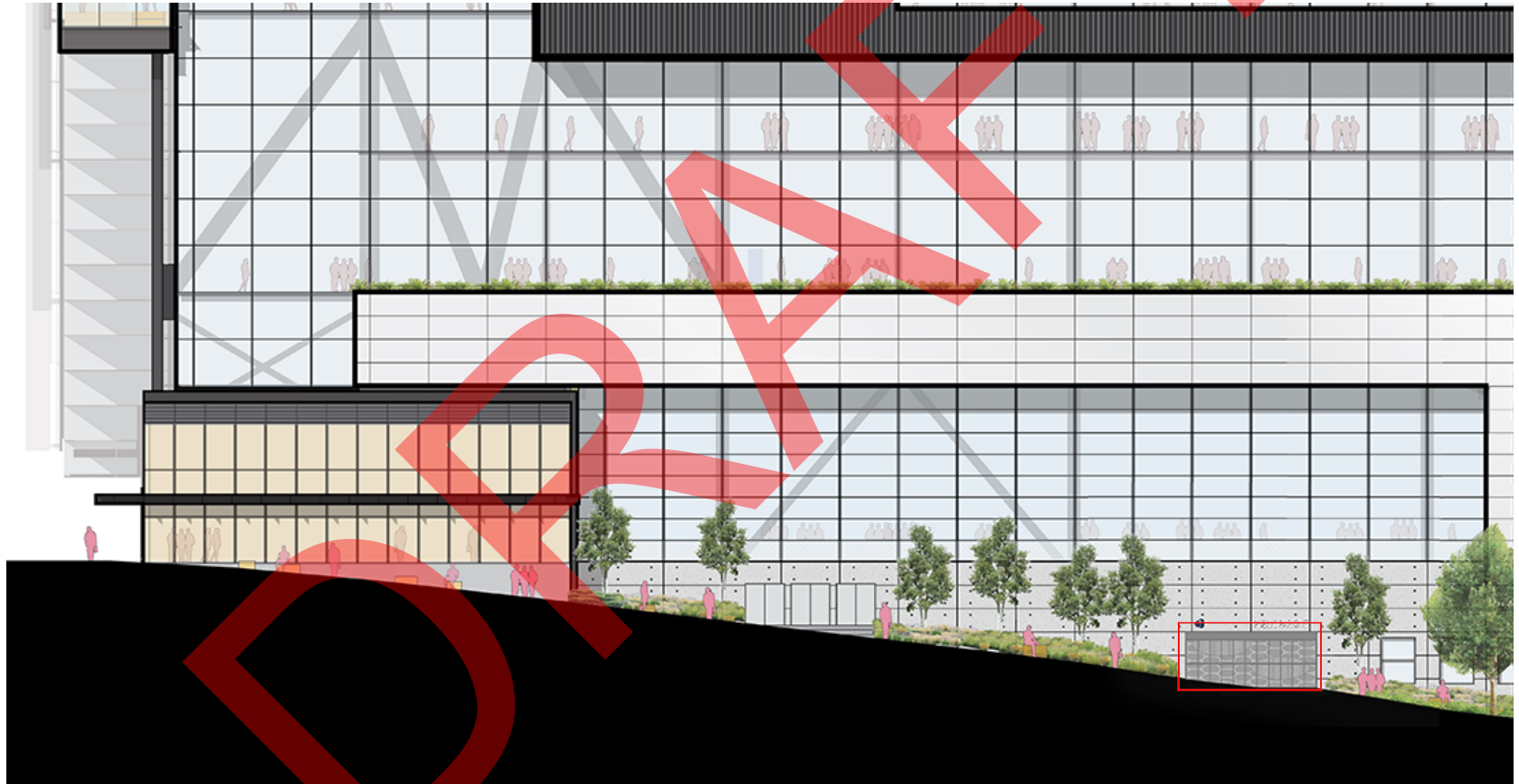
C3

Terry Avenue Loading Dock Door

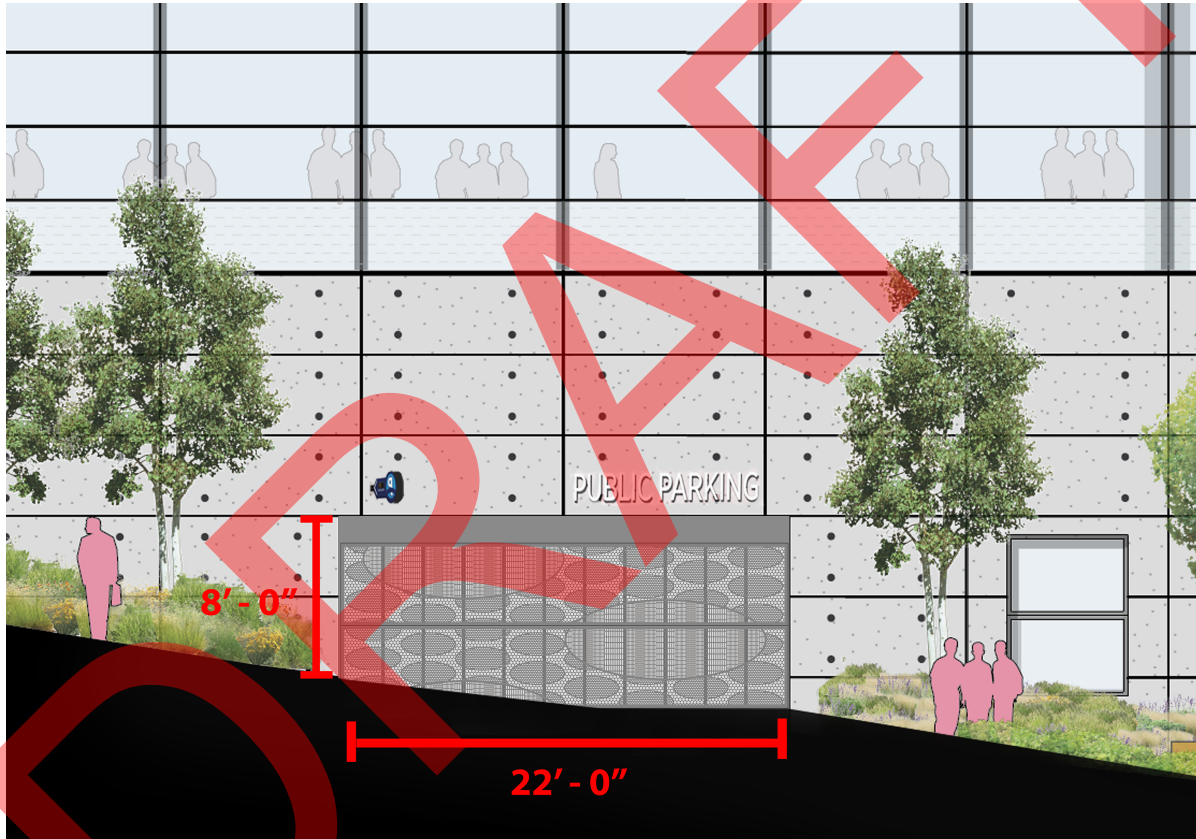


Ryan! Feddersen's design concept is marked with a set of four hands which mirror each other and are displayed over an abstracted background that references the former gates to Convention Place Station, where the Addition is under construction. This is a bi-level door. As the door opens, the hands clap together or wave, adding a gesture of thanks and goodbye.

A2 Parking Access on Boren Avenue



A2 Parking Access on Boren Avenue



Door Style: Vertical lift door, double panel.

Door Material: Custom cut aluminum plate. Highly durable powder-coated paint to match adjacent architectural metal panels. Graffiti coating.

Operations: Generally open during the day, closed at night.

A2 Parking Access on Boren Avenue



Sheila Klein's design concept for the garage door continues the pattern of her Public Benefit artwork along the Boren facade, including its panel elements and more experience. Whether walking, driving or bicycling, passersby will discover that the sculptural graphics on the building seem to undulate with nearby movement, creating a visually engaging experience.

A2 Parking Access on Boren Avenue



WSSC ADDITION ART PROGRAM – MAINTENANCE

ROOT WALL MAINTENANCE PLAN

Materials: Black paint and engineering grade reflective vinyl.

- 2 colors - easy maintenance.
- 6' datum point set - below which vehicular damage is more likely to occur.
- Design intent - no more than 20% of artwork to fall below 6' datum point.
- Files provided to replace sections as needed, second set for areas that fall below 6'.

MAINTENANCE OF POWDER-COATED GARAGE DOORS

- Powder coating is highly durable for protecting metal services; proper care will help prolong finish.
- Recommended method for cleaning is warm water and mild soap; chemical cleaners are not recommended.
- For difficult to clean areas, the use of a soft cloth, sponge or soft-bristled brush is recommended.