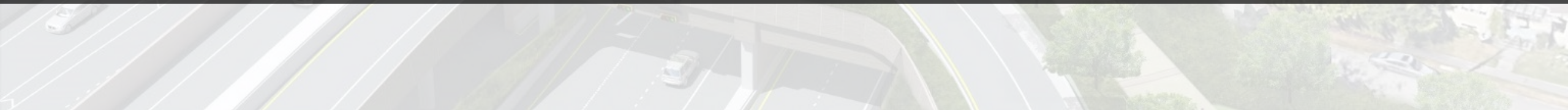


SR 520 Montlake Project | October 3, 2019

Seattle Design Commission Project Overview and Update



Presentation Overview

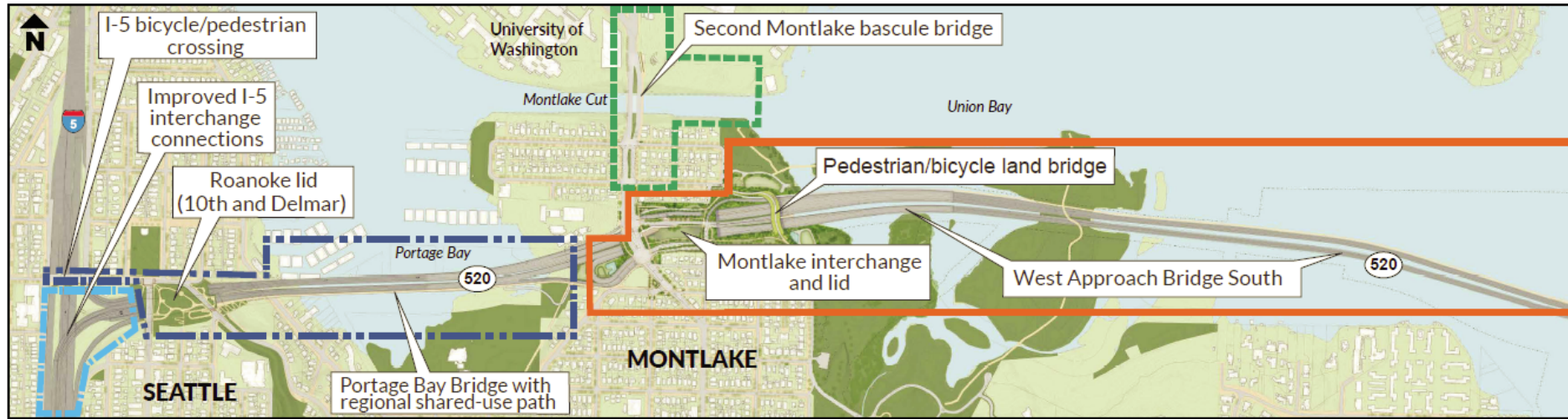
PRESENTATION:

- Introduction and Update on Delivery
- Vision and Seattle Design Commission Engagement
- Pedestrian Land Bridge and Mobility Connections
- East Montlake Park and Outlook

COMMENTS / DISCUSSION

COMMISSION FINAL RECOMMENDATIONS

Building the “Rest of the West” in Seattle



SR 520/I-5 Express Lanes Connection Project

Construction estimated start: 2020
Estimated duration: 3 years

Portage Bay Bridge and Roanoke Lid Project

Construction estimated start: 2023
Estimated duration: 6 years

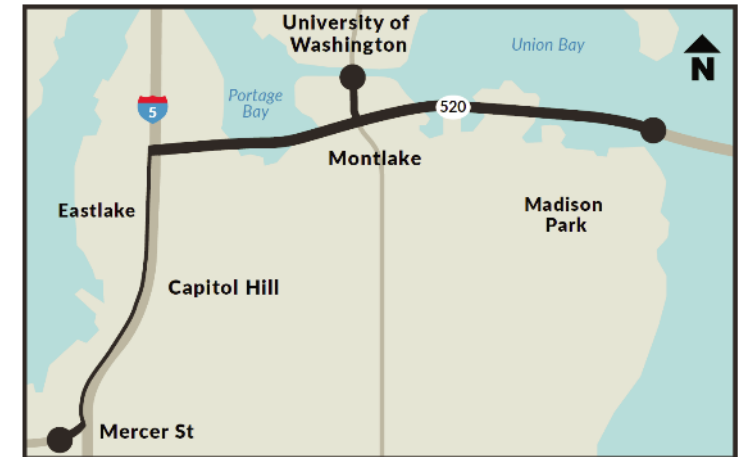
Montlake Cut Bascule Bridge Project

WSDOT will begin additional coordination in 2020 with community stakeholders and agency partners regarding project scope

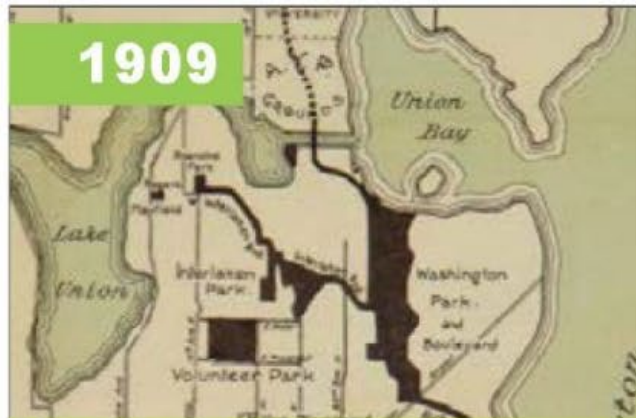
Montlake Project

Construction start: 2019
Estimated duration: 4-5 years

Note: project dates are estimated and subject to change



Nature Meets the City (Seattle Segment Community Vision)



1909
Olmsted Parks, Boulevards and Playgrounds Plan
Seattle Board of Park Commissioners



2006
Bands of Green Plan
Seattle Parks Foundation



2014
The next 100 years: project-proposed green network and open space enhancements



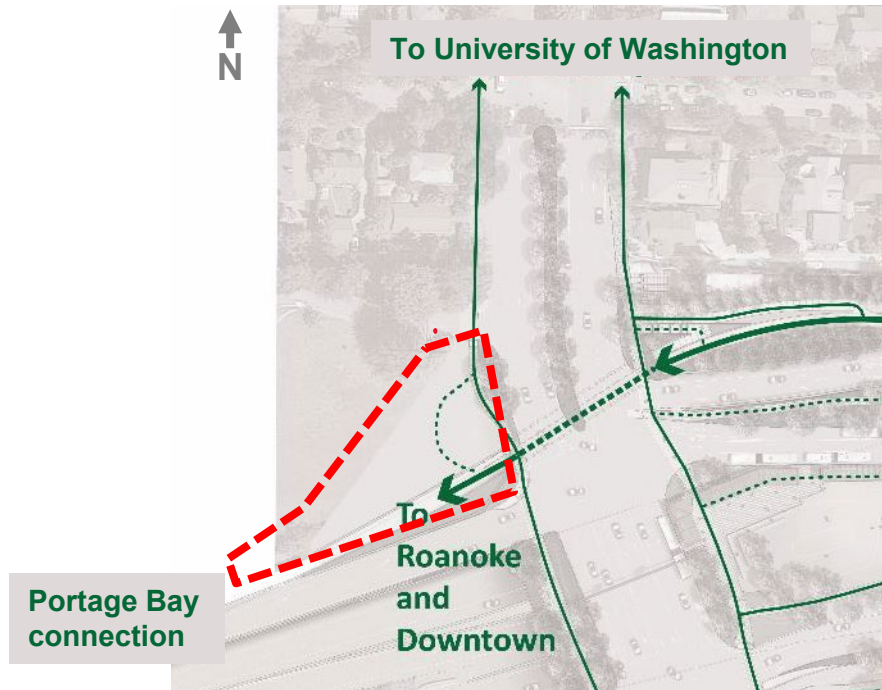
Delivering “Nature Meets City” Vision



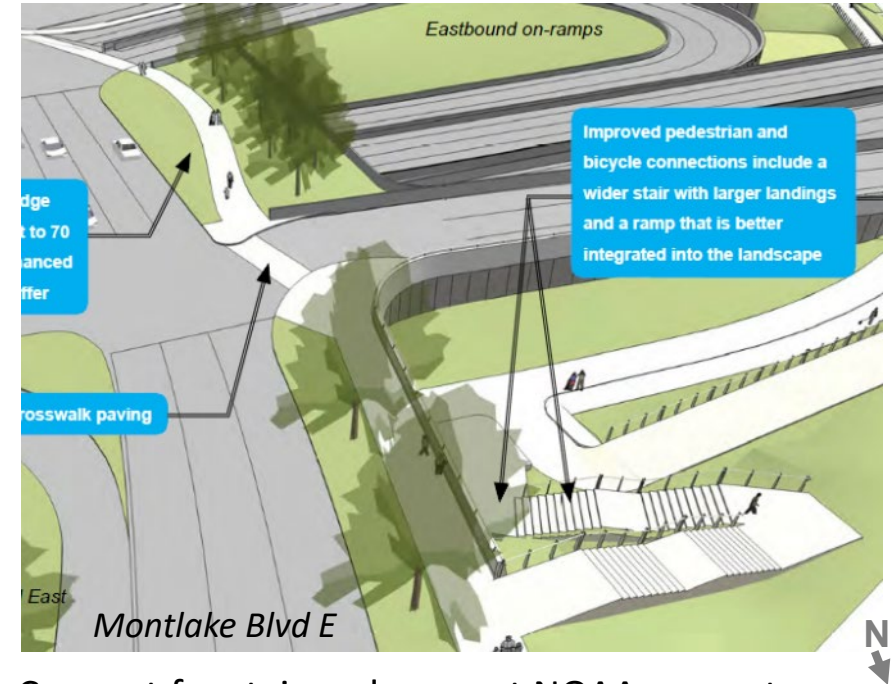
SR 520 Montlake Project:

1. Lid with neighborhood open space – *reduced lid due to utilities*
2. East Montlake Park and storm drainage – *now more open grass area*
3. Pedestrian land bridge – *refined to respond to landform*
4. Outlooks – places for people – *locations adjusted to highlight views*
5. Pedestrian / bike access at NOAA site – *access negotiated*

NOAA Property Update: Improved Mobility Connections



- WSDOT / NOAA successful negotiation
- Accessible mobility connection between the west side of Montlake Blvd E and the Bill Dawson Trail (16 ft+ grade change)
- Intent to add to SR 520 Montlake Project contract
- SR 520 Portage Bay Bridge project connection will consult with SDC

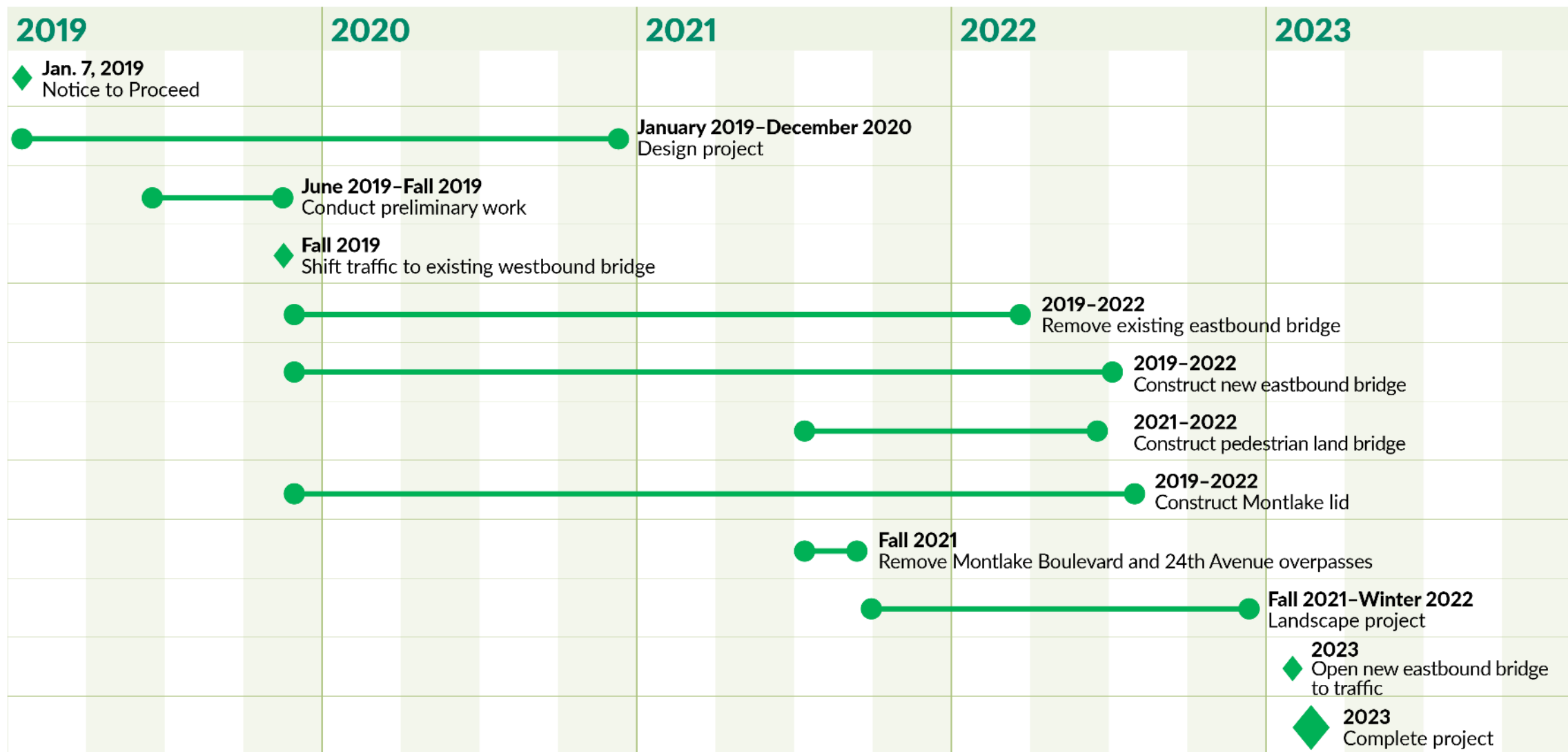


Concept for stair and ramp at NOAA property
(2014 Rest of the West final design report)

SR 520 Montlake Project Overview

- **WSDOT / City of Seattle / Others**
 - Community Engagement (2012 – current)
 - City Departments and Seattle Design Commission engagement with RFP
 - Section 106 Concurring Parties
- **RFP – Design Build**
 - Process
 - Graham Awarded Design/Build Contract – December 2018
- **Status**
 - Design Refinements and Construction Documents In Progress
 - Task Force Meetings
 - Construction Started – Summer 2019

SR 520 Montlake Project Schedule



SR 520 Montlake Project – Construction Under Way

Construction cameras:
<https://bit.ly/2miJFLY>



Project Site – Montlake Area



Nature Meets the City (2012 Montlake Community Concept)



Seattle Design Commission Engagement

- **SDC and Subcommittee meetings 2010 - 2018**
- **SDC Design/Build Meeting #1 – February 21, 2019**
 - Contract Overview and Comparisons of Design
 - Prescriptive Requirements: Materials and Elements
- **SDC Subcommittee Meeting – June 27, 2019**
 - Focus on Pedestrian Land Bridge
- **SDC Design/Build Meeting #2 – July 18, 2019**
 - Design/Build Overview
 - Pedestrian Land Bridge Update
 - Lid and Neighborhood Open Space
- **SDC Design/Build Meeting #3 – October 3, 2019**
 - Montlake Project Update
 - Pedestrian Land Bridge and Mobility Connections
 - East Montlake Park

SR 520 Montlake Project Overview

Major Urban Design Elements:

- Lid: Neighborhood Open Space
- Pedestrian Land Bridge
- Montlake Plaza
- Outlooks and Views
- Pedestrian/Bicycle Paths/Nodes
- Neighborhood Route of Travel
- Tree Canopy and Planting

Contract Requirements:

- Prescriptive Technical Requirements
 - Urban design features and amenities
 - Locations, dimensions and details
 - Materials
 - Specifications
- Concept plans
- Multi-agency standards
- Maintenance agreements

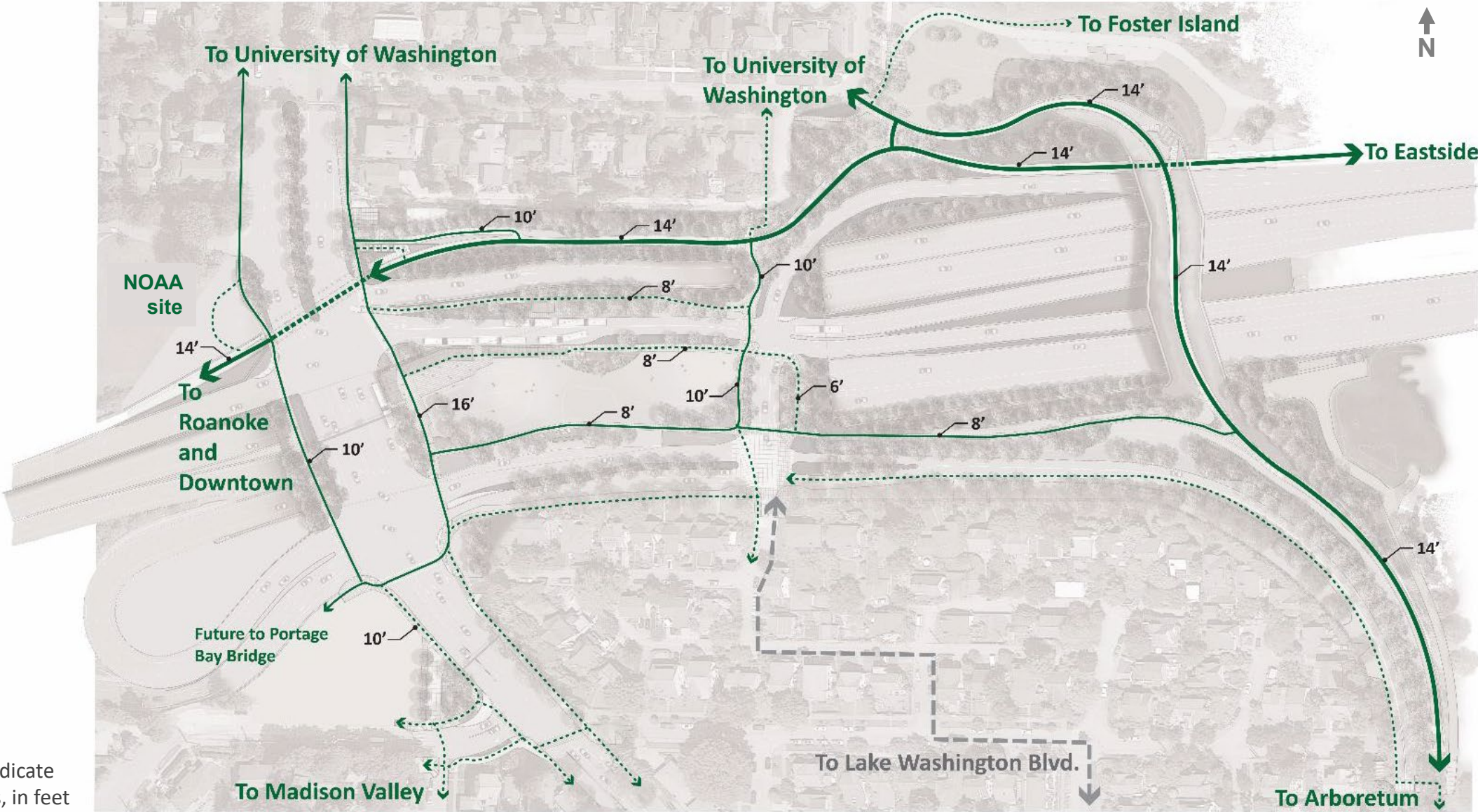
SR 520 Montlake Project Refined Plan (07/2019 – 10/2019)



Pedestrian Land Bridge and Mobility Connections

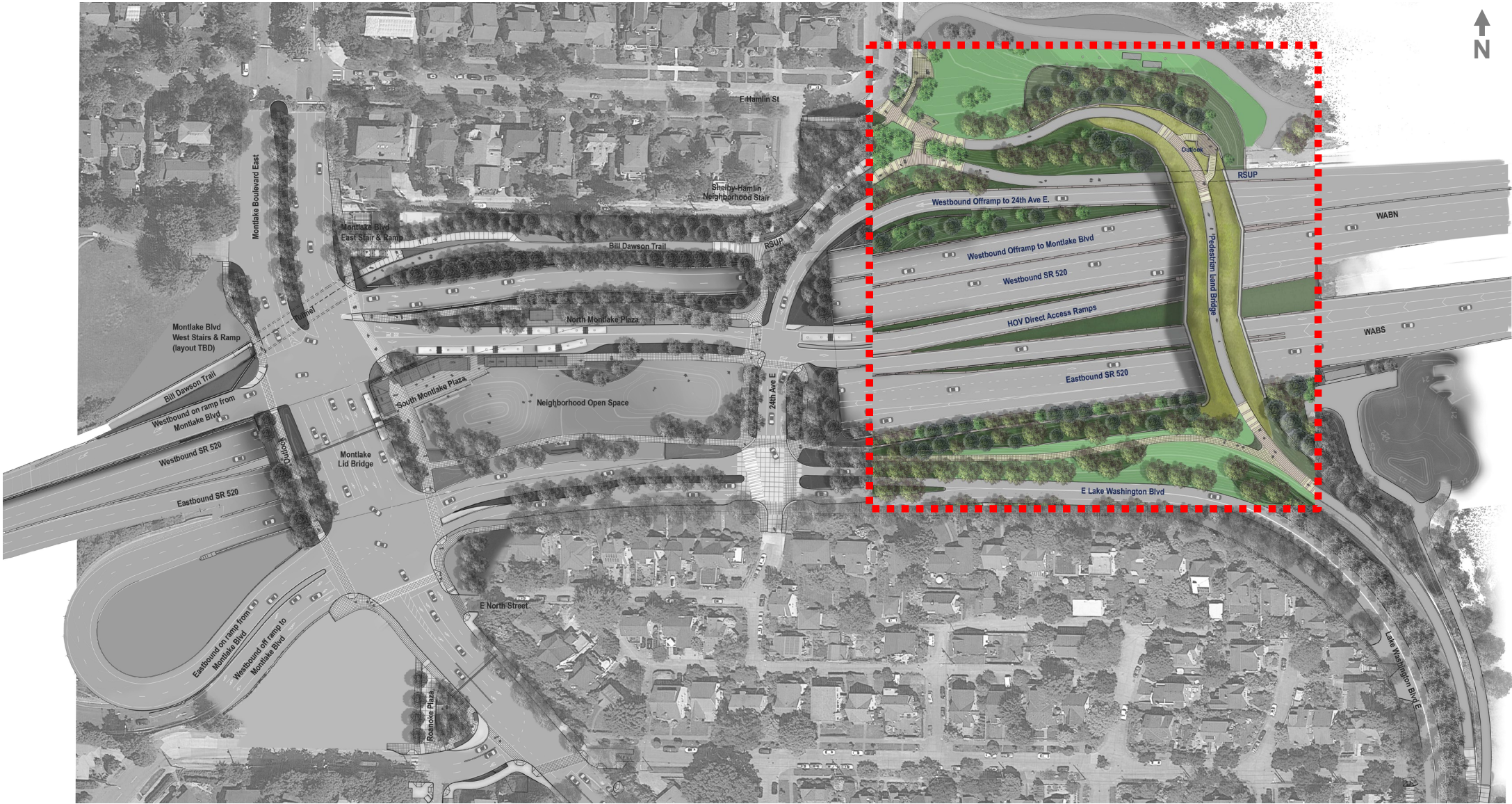
- **Pedestrian Land Bridge**
 - Connectivity
 - Layout, Context
 - Outlook
 - Planting
 - Structure and Form
 - Architectural Elements

Pedestrian/Bicycle Mobility Connections



Numbers indicate path widths, in feet

Pedestrian Land Bridge and Mobility Connections



Pedestrian Land Bridge

SDC Feedback During Design-Build Phase

SDC's action recommendations / summary comments from 2/21/2019 full SDC meeting for SR 520 Montlake phase update:

- Achieve the **gracefulness**
- **relocating the viewpoint**
- pedestrian land bridge as a gateway.

SDC Subcommittee feedback on updated pedestrian land bridge design, June 2019:

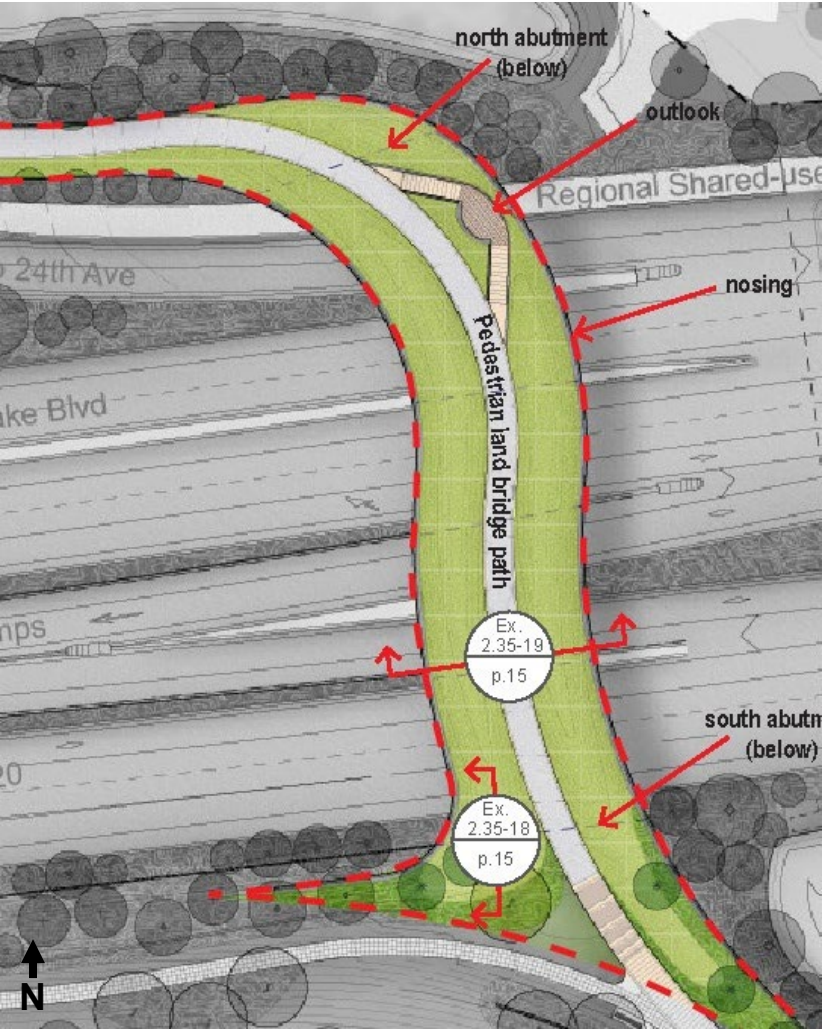
- **ties into landform**, within the precast structural approach.
- **appearance of landform floating**

SDC Meeting #2 feedback on updated pedestrian land bridge design, July 2019:

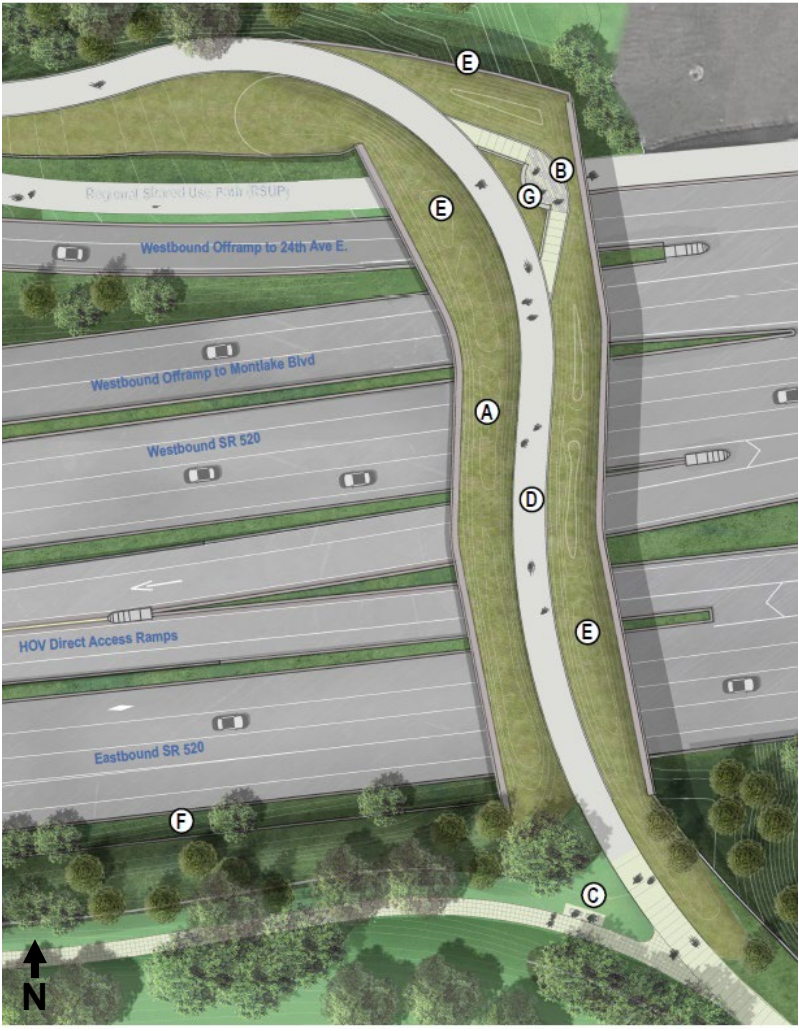
- Study **plantings** on land bridge to **reinforce “nature meets city”** from roadway users' perspective.
- **Refine railings** at updated outlook location to maintain safety and emphasize views.
- Consider addition of **interpretive elements** at outlook.

Pedestrian Land Bridge Concept Evolution

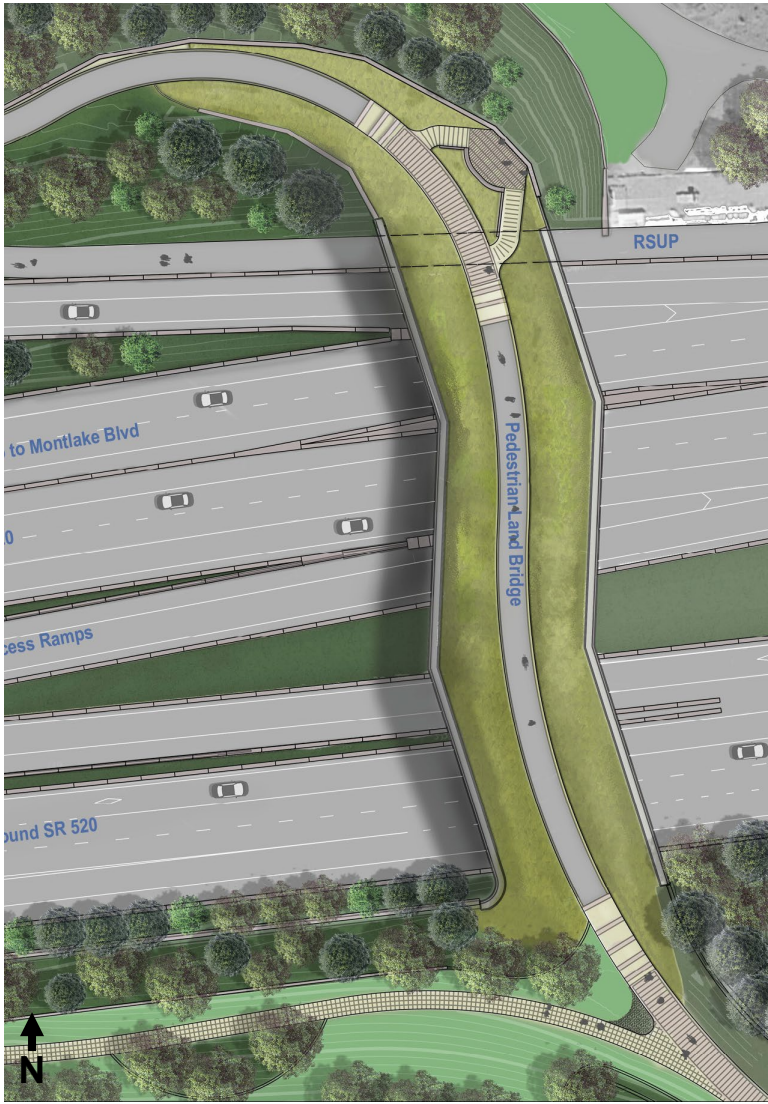
2018 WSDOT RFP Plan



Response to RFP Plan (11/2018)

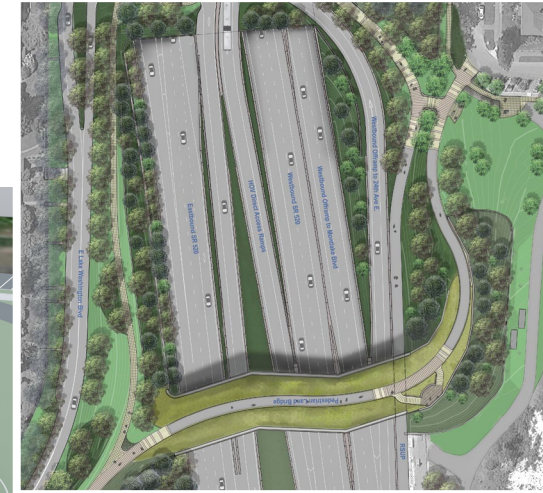
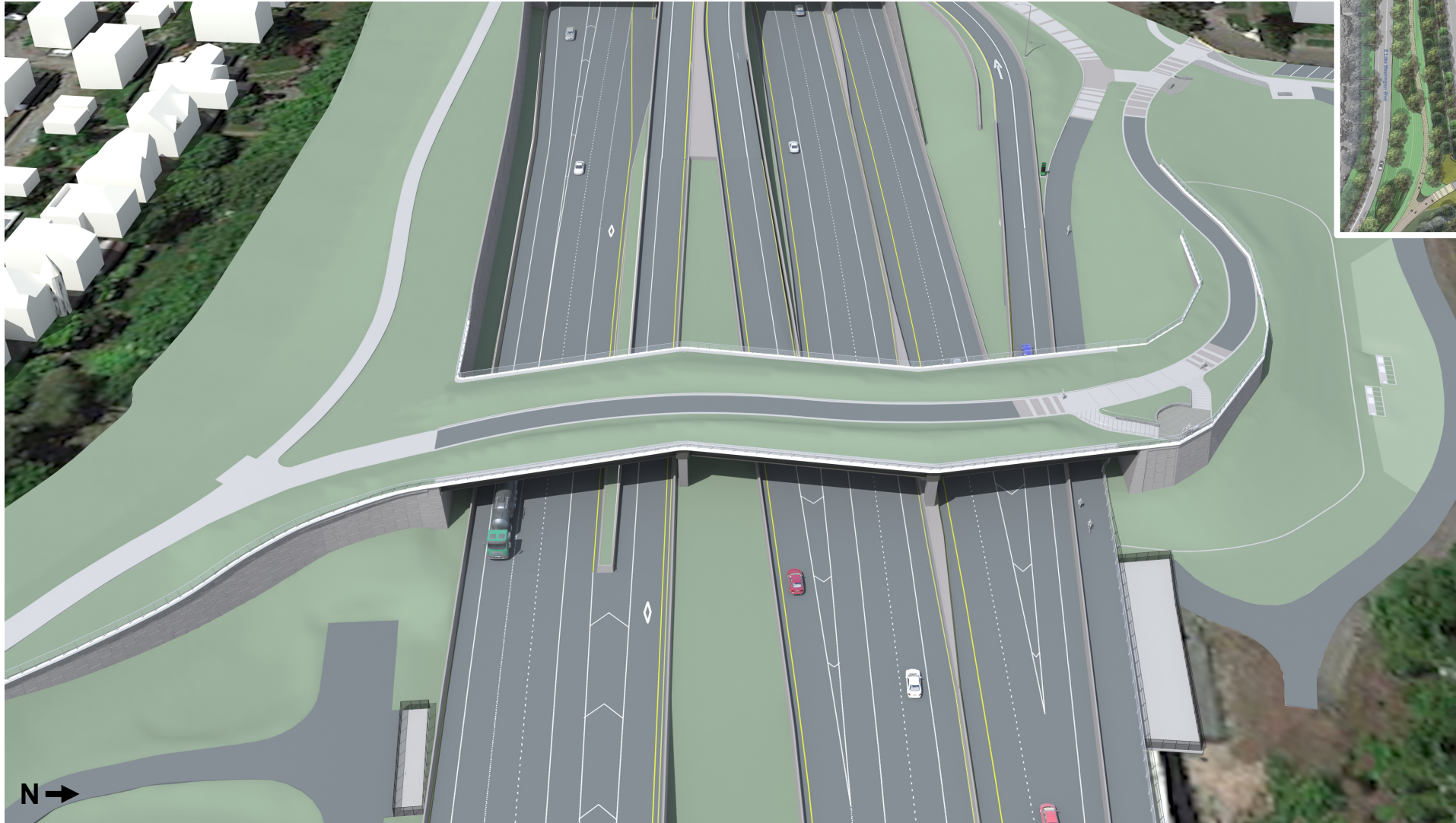


Key Plan
Current Plan
(7/2019 - 10/2019)



Pedestrian Land Bridge

Working Model View – Connections, Landform



Pedestrian Land Bridge

Outlook - Views

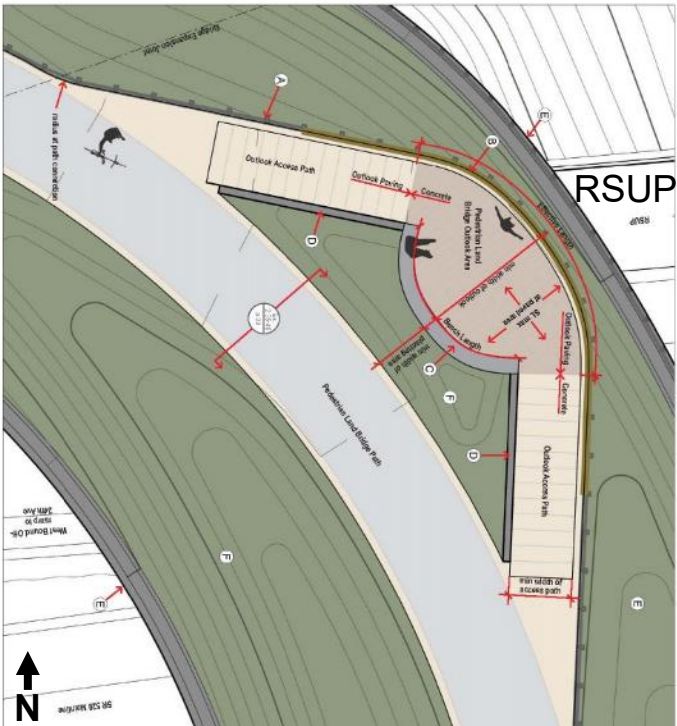


Outlook example
from floating bridge

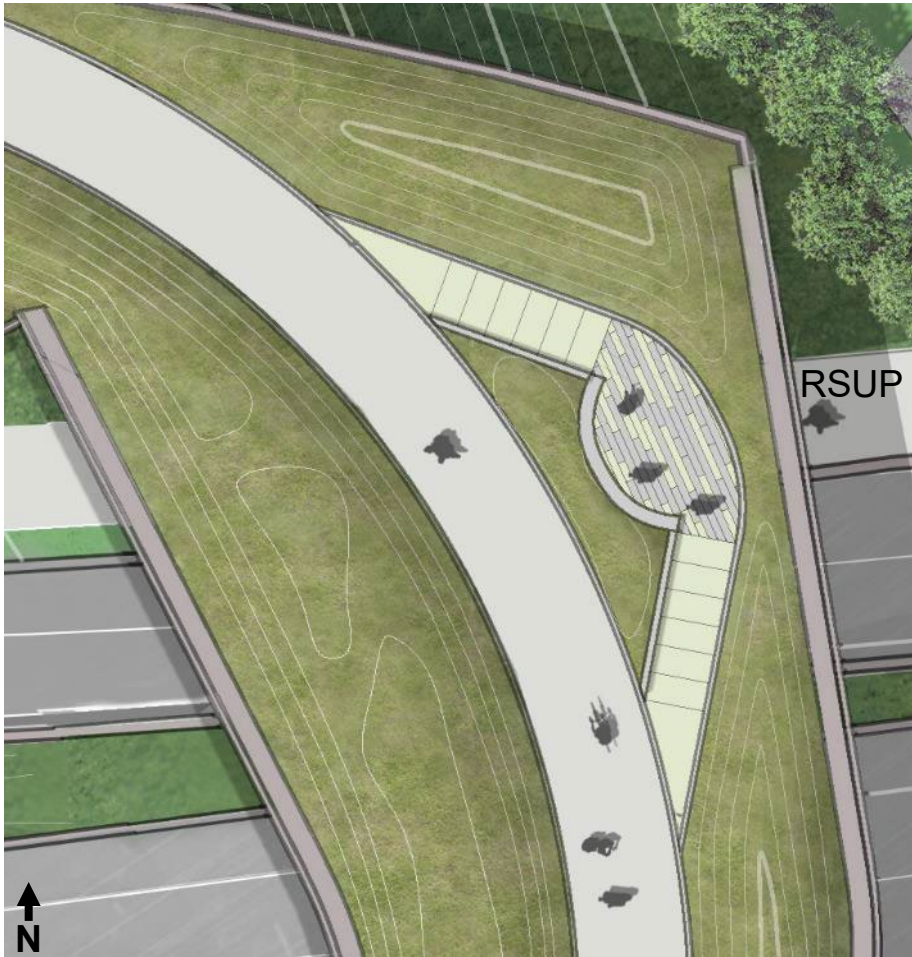
Approximate view angle from current outlook location (further north, off of pedestrian land bridge)

Pedestrian Land Bridge

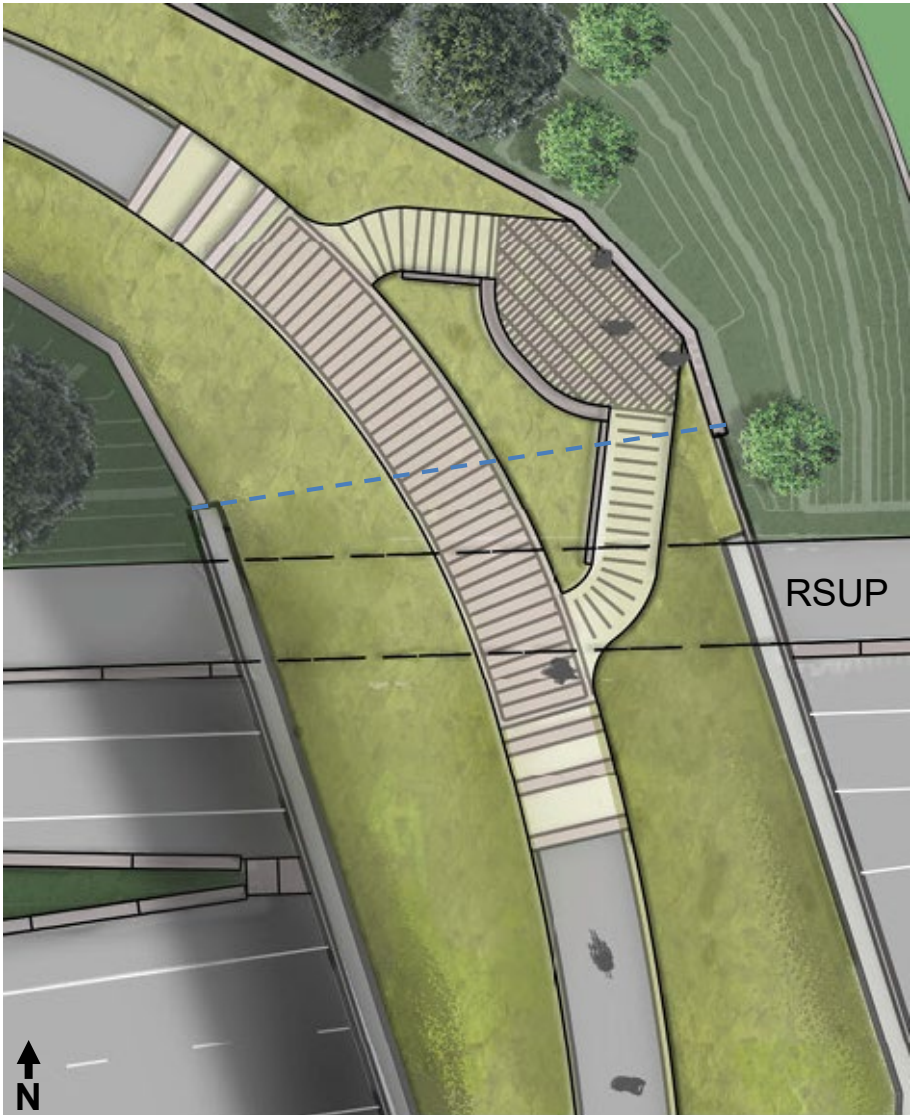
Outlook – Geometry Development



PLB Outlook - RFP



Response to RFP
Plan (11/2018)



Current Plan
(team design, SDC & UDTF feedback)

Pedestrian Land Bridge

View North Along Path



Pedestrian Land Bridge

Plantings – Meadow (Prescriptive Requirement)



Meadow plant list in technical requirements:

Yarrow
<i>Achillea spp.</i>
Bluebunch Wheatgrass
<i>Agropyron spicatum</i>
Nodding Onion
<i>Allium cernuum</i>
Godetia
<i>Clarkia amoena</i>
Lance-leaf Coreopsis
<i>Coreopsis lanceolata</i>
Tufted Hairgrass
<i>Deschampsia caespitosa</i>
Idaho Fescue
<i>Festuca roemerii var. idahoensis</i>
Fed Fescue
<i>Festuca rubra</i>
Prairie Strawberry
<i>Fragaria vesca</i>
Broadleaf Lupine
<i>Lupinus latifolius</i>
Wild Bergamont
<i>Monarda fistulosa</i>
Hall's Aster
<i>Symphyotrichum hallii</i>
Douglas Aster
<i>Symphyotrichum subspicatum</i>

Pedestrian land bridge planting – meadow, per RFP

Pedestrian Land Bridge

Plantings – Meadow (Prescriptive Requirement)



Achillea spp. (Yarrow)
3'-4' ht



Agropyron spicatum (Bluebunch
Wheatgrass) 1.5'-4' ht



Allium cernuum (Nodding
Onion) 1-3' ht



Clarkia amoena (Godetia 'Farewell to Spring')
0.5'-3' ht



Coreopsis lanceolata (Lance-leaf Coreopsis)
2' ht



Deschampsia caespitosa
(Tufted Hairgrass) 2'-5' ht



Deschampsia caespitosa (fall) (Tufted
Hairgrass) 2'-5' ht



Festuca roemerii var. *idahoensis* (Idaho Fescue)
2'-5' ht



Festuca rubra (Red Fescue)
1'-2' ht



Fragaria vesca (Prairie Strawberry)
6"-12" ht



Lupinus latifolius (Broadleaf Lupine)
2'-4' ht



Monarda fistulosa (Wild Bergamot)
1'-4' ht



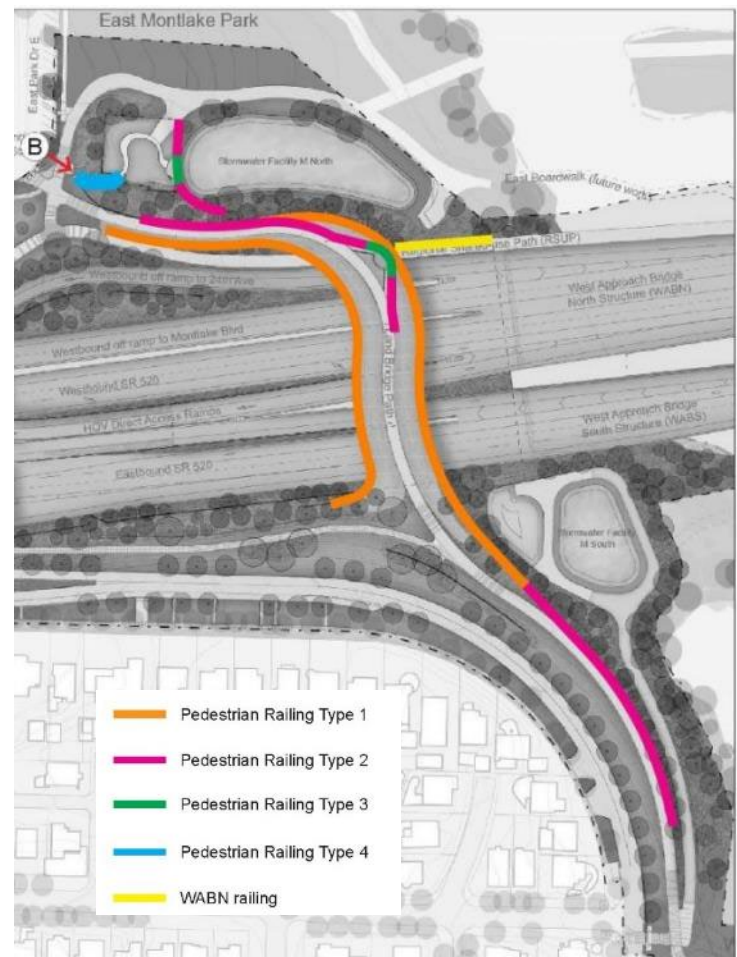
Symphyotrichum hallii (Hall's Aster)
2'-5' ht



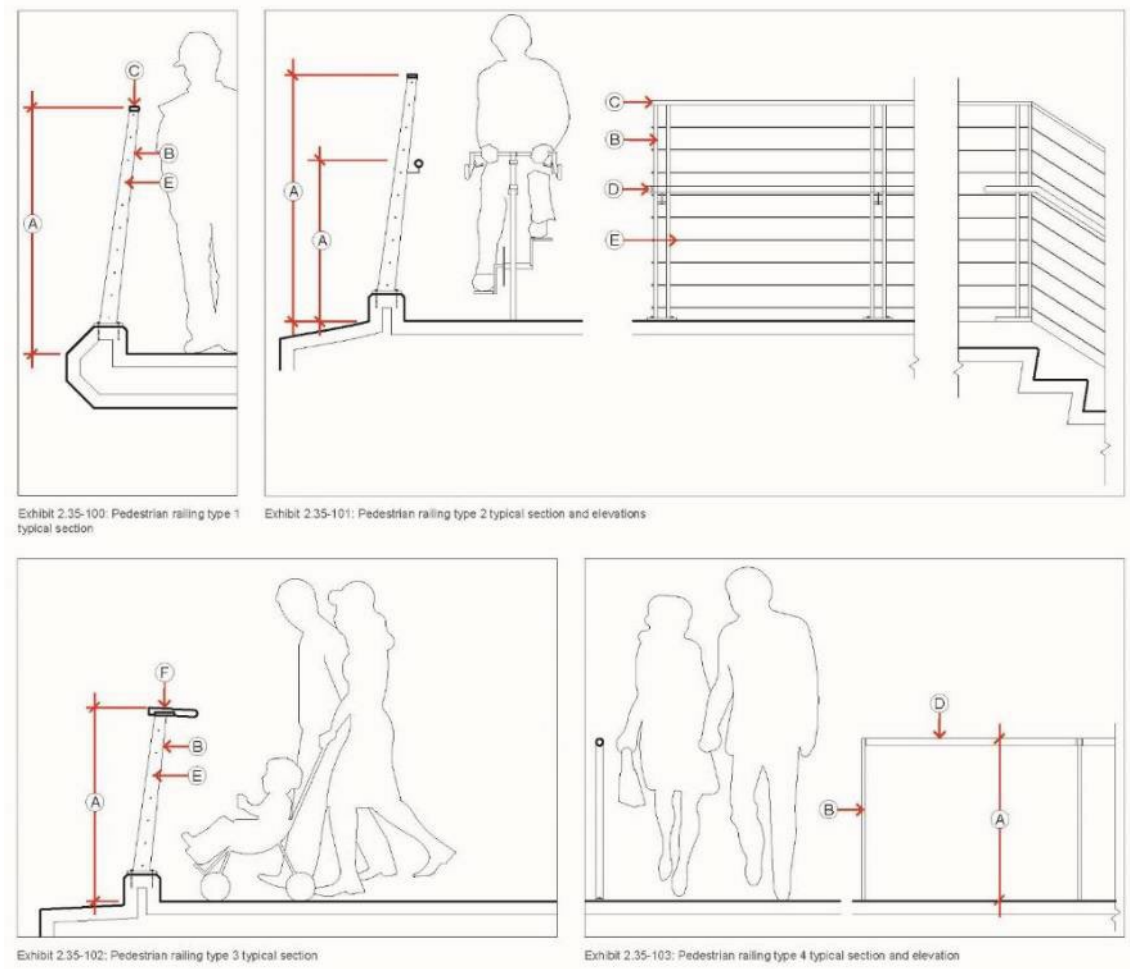
Symphyotrichum subspicatum (Douglas Aster)
1'-3' ht

Pedestrian Land Bridge

Railings (Prescriptive Requirements)

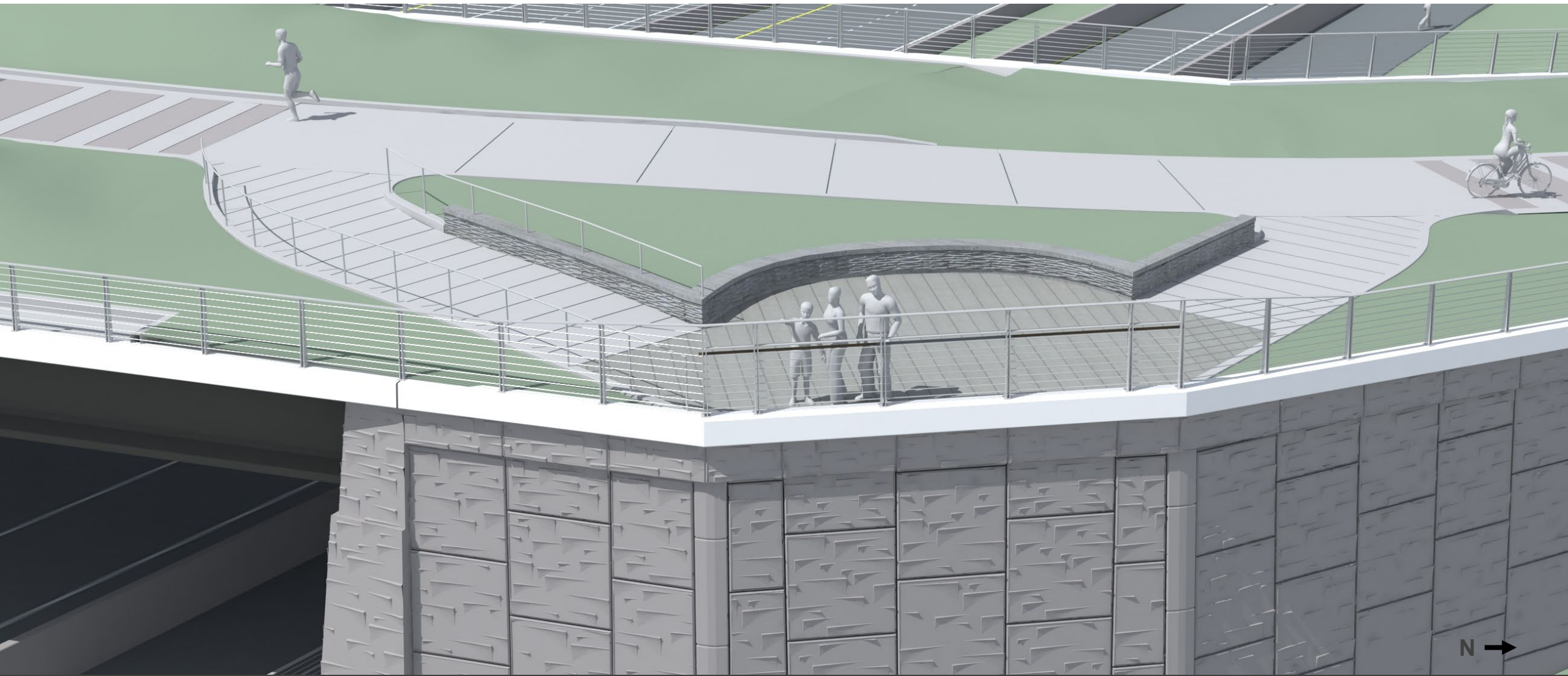


Railings key map from 2018 RFP



Pedestrian Land Bridge

Outlook



Pedestrian Land Bridge Outlook

Interpretive Signage
example from SR520
floating bridge outlook



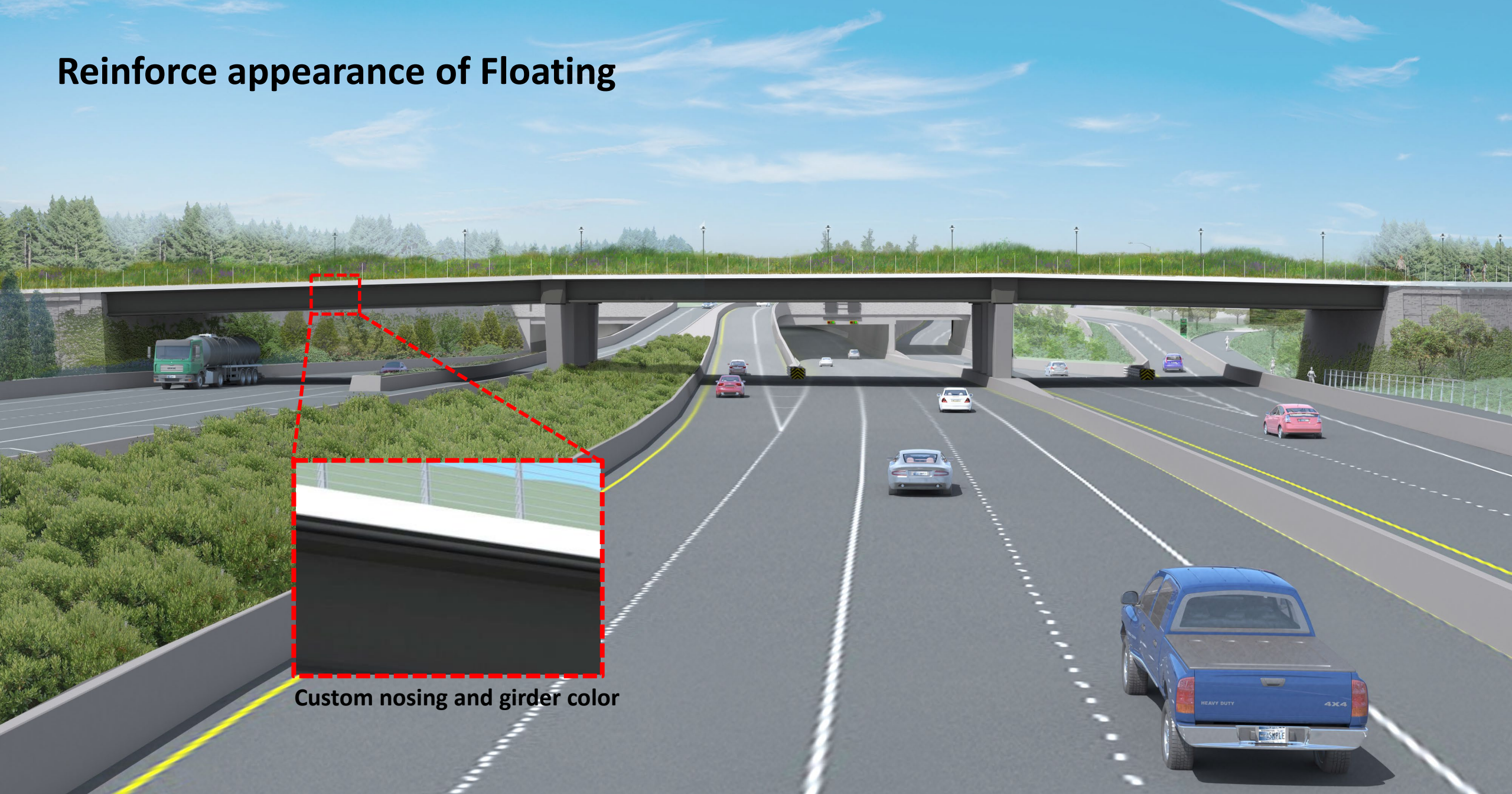
Pedestrian Land Bridge Elevation



RFP Response



Reinforce appearance of Floating



Custom nosing and girder color

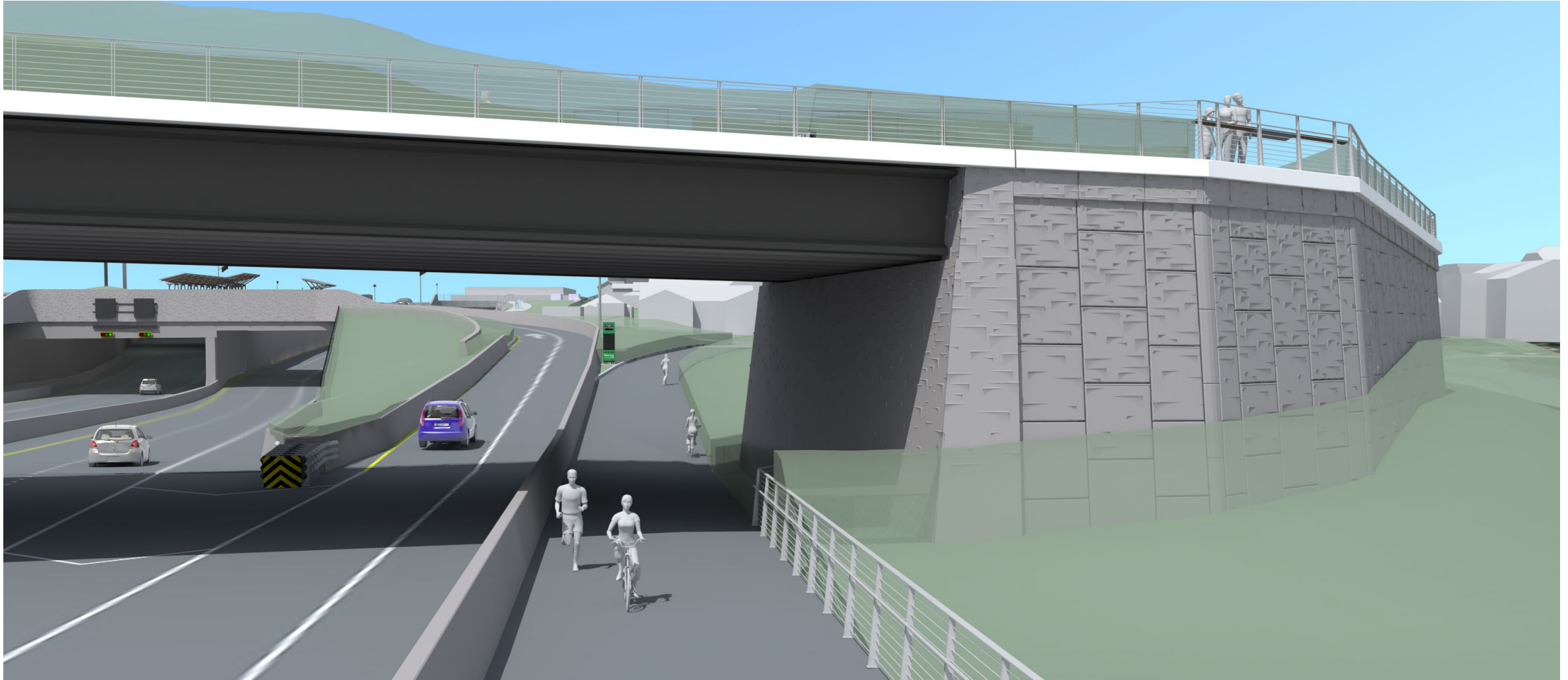
Pedestrian Land Bridge

Architectural Elements



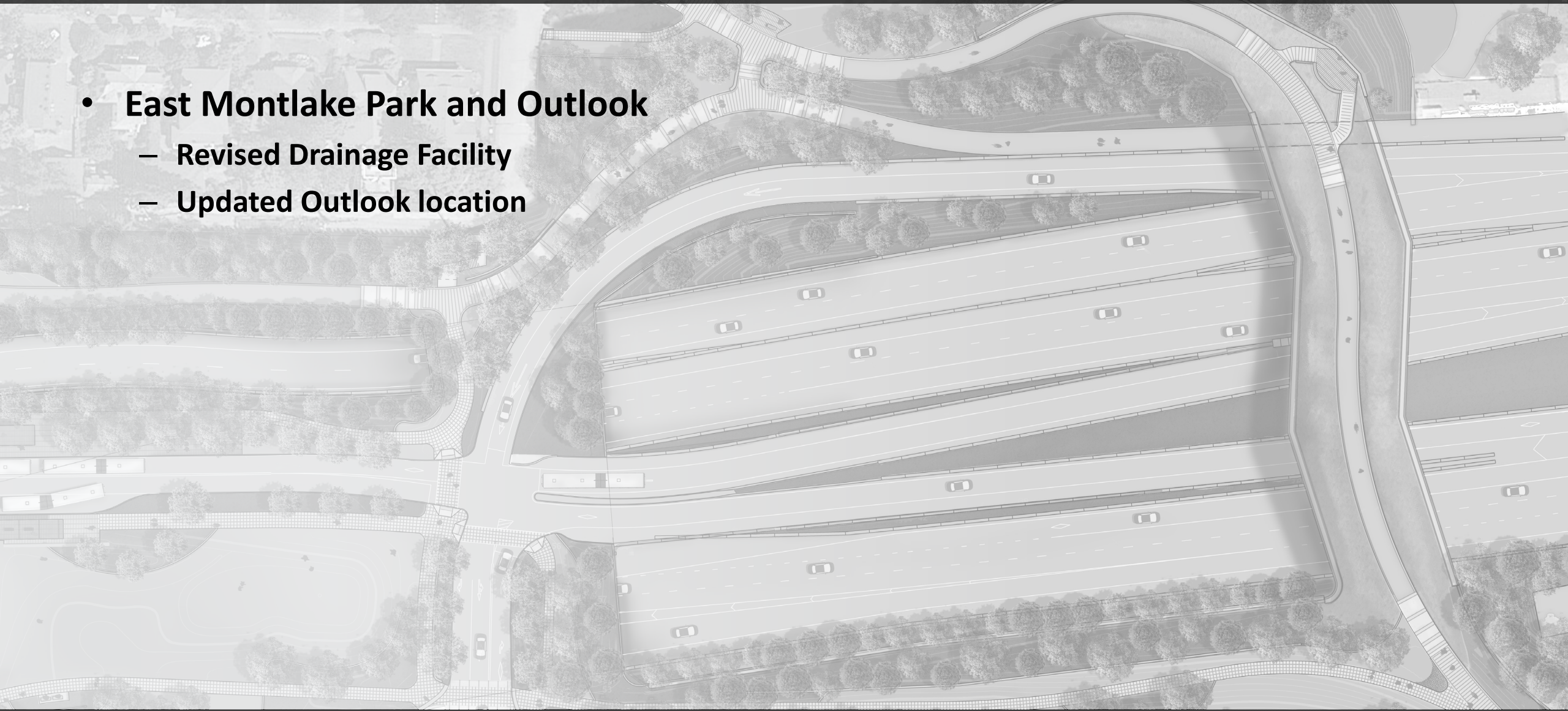
Pedestrian Land Bridge

Architectural Elements



East Montlake Park and Outlook

- **East Montlake Park and Outlook**
 - Revised Drainage Facility
 - Updated Outlook location



East Montlake Park – RFP Plan



RFP Plan

Comments Received:

- Loss of useable open space
- Storm facility size and aesthetics
- Ped/bike users gathering space too close to neighborhood

East Montlake Park – Updated Plan



East Montlake Park - Outlooks



RFP Plan



Current Plan (2019)

Next...

- Task Force Meetings & Over-the-Shoulder reviews
- Montlake Lid Construction Documents
- Pedestrian land bridge, Paths and SR 520 Roadside areas Construction Documents
- **“Rest of the West” SDC Consultations continue with Portage Bay Bridge**

Discussion

