

Seattle
Design
Commission

APPROVED
MINUTES OF THE MEETING
17th November 2005

Gregory J. Nickels,
Mayor

David Spiker
Chair

Charles Anderson

Pam Beyette

Adam Christiansen

Karen Kiest

Anindita Mitra

Sheri Olson

Nic Rossouw

Dennis Ryan

Darrell Vange

Guillermo Romano,
Executive Director

Layne Cubell,
Commission Coordinator

Projects Reviewed

Fire Station 10 Improvements and Service Center
SDOT Art Plan

Convened: 8:30am

Adjourned: 1:30pm

Commissioners Present

David Spiker, Chair
Charles Anderson
Pam Beyette
Adam Christiansen
Karen Kiest
Anindita Mitra
Sheri Olson
Nic Rossouw
Dennis Ryan
Darrell Vange

Staff Present

Guillermo Romano
Layne Cubell
Tom Iurino
Alison Maitland Scheetz



Department of Planning and
Development

P. O. Box 34019
1000 5th Avenue, 19th Floor
Seattle, WA 98124-4019
phone 206/233-7911
fax 206/288-7883

17 Nov 2005 Project: Fire Station 10 Improvements and Service Center

Phase: Design Development II

Previous Reviews: 2 June 2005 (Design Development), 7 April 2005 (Alley Vacation), 16 December 2004 (Schematic Design), 18 November 2004 (Concept Design), 15 July 2004 (Pre-Design)

Presenters: Ed Weinsin, Weinstein AU

Attendees: Chester Weir, Weinstein AU
Moria Gray, Seattle Department of Transport
Monica Lake, City of Seattle FFD
Molly Dance, City of Seattle SFD
Jess Harris, Department of Planning and Development
Sarah Sadt, Department of Neighborhoods
Ruri Yampolsky, Office of Arts & Cultural Affairs

Time: 1 hours (SDC Ref. # 221 – DC00334)

Action

The Commission appreciates the sixth and final presentation of the Fire Station 10 Improvements and strongly approves the direction of the construction documents. They

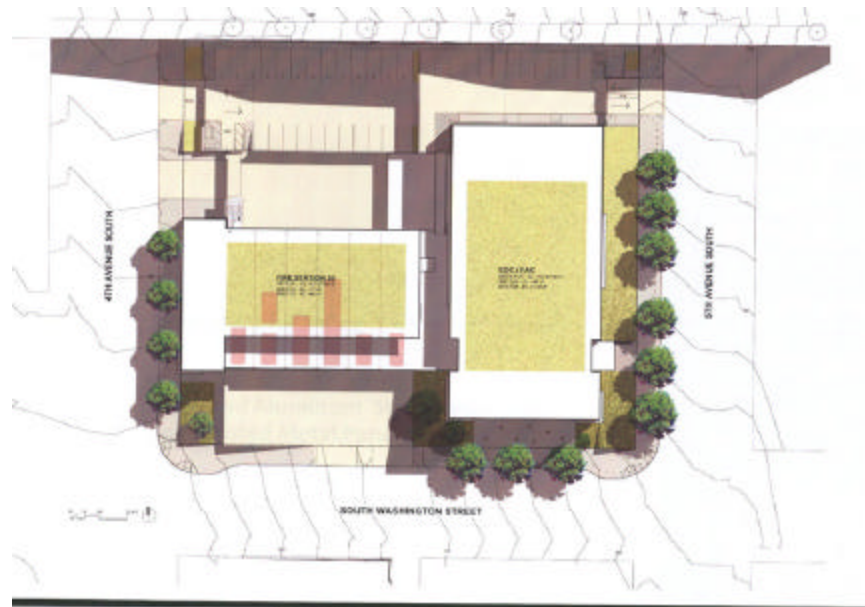
- **appreciate the project has evolved to accommodate the proposed future headquarters building on the north side of the site and recognize that most of the design changes have occurred with that in mind.**
- **understand and values the necessity to sustain the flexibility and adaptability of that portion of the site.**
- **recommend adding vegetation to the north end of 4th Avenue to extend the continuity of the public streetscape there.**
- **feel that the southwest corner of the site is much improved, especially the display opportunities of the corner glazing, which will serve as a lantern rather than the former display box window.**
- **commends the integrated approach to showcasing art on the south side.**
- **recommend recognizing the antennae on the roof rather than trying to hide them since they represent a strong part of the Emergency Operations Center.**
- **enjoyed the materials presentation, and is also pleased that the vents and louvers have been moved from the south side of the building.**

Proponents Presentation

The purpose of this presentation was two fold; first, to inform the Commission of a subtle change to the program, specifically in relation to the parking, and second to explain the proposed colors and materials.

Program Changes.

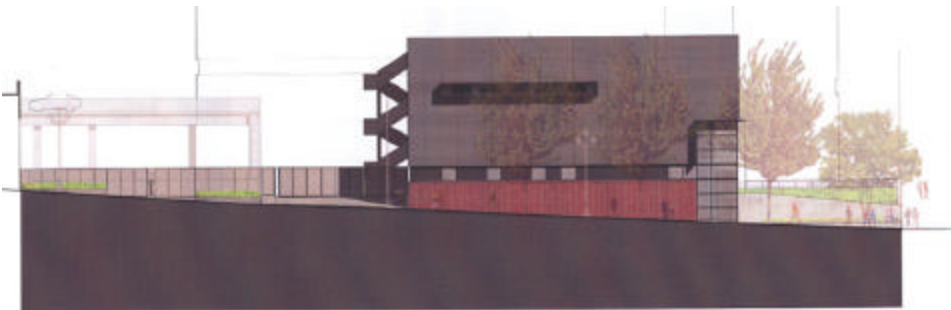
Since the last presentation the City has analyzed the liabilities to Yesler Way Viaduct and concluded that this is the time to remedy the lateral displacement of the road. In response to this the proponents propose shoring up the side of Yesler Way to provide the potential foundations for a future fire headquarters building. This proposal does not commit to the future development but does create the structural foundations and infrastructure, thus optimizing the use of public money.



Fire Station 10 Replacement
SITE PLAN
 November 17th, 2005

The design proposes a minimal intervention with a surface parking lot with access off 4th ST that leads to a raised deck that provides parking for the EOC/FAC with access off of 5th Ave. This proposal aims to provide the requisite parking while not precluding options for the future. Essentially, the retaining wall on 4th Ave has been replaced by a screening element and a curb cut allowing for both entry and exit, just north of Fire Station 10 gate system. Similarly, on 5th street screening gates, with low landscaping, provide access to the parking deck.

East section



West Section



The proposal presents a design strategy which provides the city with the good potential foundation for a future headquarters building. It consolidates all the public safety features in one place and takes maximum benefit of the site and allows for a more vertical element in the future.

South section



The perimeter of the site and the landscaping essentially remains the same. However, on the south side the generators have been moved on to a lower storage element on the interior of the site. This allows for better integration of the art and the landscaping. The only other change is on the southwest corner. The red display window presented in an earlier iteration has been changed to larger window with the eye frame defining its presence and not the red box.

Materials

The proponents presented the following materials:

- A red Norman brick base – This is longer than standard brick, emphasizing the horizontal lines of the building. They proposed a monolithic color, rather than a blend to respect the surrounding historic buildings.
- Black metal sash paneling and railing.

The red and black color scheme reflects traditional Chinese firefighting colors.

- Painted metal siding – The mini v bean pattern deflects water and dirt. The metallic warm gray color changes with light and contrasts with the red and black.

Commissioner Questions and Comments

- Questions the number of curb cuts.
 - There are currently 9
 - The proposal requires 5
- Department of Neighborhoods had no comment regarding the current proposal
- The Office of Arts & Cultural Affairs confirmed 7-9 sculptural elements are planned for the south side. They hope to engage up to three community artists through an art plan put out next month.
- The Fire Department fully supports the design proposal and feels that it meets the

operational challenges of the site.

- Asks if the green roofs are accessible.
 - Although structurally sound, would need to provide access, which could be an issue.
- Is very concerned that the new and potential building is imposing and feels the site focuses on cars rather than people.
- Appreciates the removal of the louvers and generators to an internal site.
- Likes the improvements to the southwest corner.
- Commends the change to the southwest corner and likes the architecture showcasing the lantern.
- Thanks the proponents presenting for a sixth time.
- Questions if the entrance to the future head quarters building is off 4th Ave.
 - No, will ideally come off Yesler
- Appreciates seeing the materials and colors in reality.
- Would like to see the antennae celebrated.
- Likes the southwest façade and the lantern, but feels the west elevation is not as effective.
- Asks if there will be lighting

17 Nov 2005 Project: SDOT Art Plan
Phase: Update

Presenters: Daniel Mihalyo, Seattle Department of Transport
Ruri Yampolsky, Seattle Office of Arts and Cultural Affairs

Attendees: Annie Han, Lead Pencil Studio
Rachel Benshmuell, Vulcan

Time: 1 hours (SDC Ref. # 169/170)

Commission's Summary

The Design Commission thanks Daniel Mihalyo and the Office of Arts and Cultural Affairs for presenting the final SDOT Art Plan. Following is a summary of their comments. The Commission

- **Thinks the Plan with its three books is very creative and successfully highlights Seattle's innovative public art history.**
- **appreciates that the plan addresses not only the big picture but also the finer details of the public realm, which are an important part of the urban fabric.**
- **applauds the broad multidisciplinary reach of the plan and commend the use of the matrix to help the users and decision makers recognize potential art opportunities.**
- **thanks Daniel Mihalyo for his great work and encourages SDOT to adopt, expand and implement the content and intent of these books, and particularly encourages a focus on the public streetscape and building facades.**

Proponents Presentation

The SDOT Art plan culminates a two year residency of artist Daniel Mihalyo with Seattle's Department of Transportation. The Office of Arts & Cultural Affairs is extremely appreciative of SDOT's support.

The plan is written to be both critical and visionary. It comprehensively details how Seattle can become a national leader in creating a more humane, layered, beautiful and relevant transportation system, and offers a new methodology for rethinking the practicality and use of our shared right of way.

The plan has been subdivided into three distinct books, each with its own audience and specific intent:

Book 1: The Diagnosis – the big picture and implementation recommendations

Book 2: The Toolkit – a reference for project managers and special project ideas

Book 3: Sidewalk Survey – a visual encyclopedia of creativity in the right of way

Each book can stand alone as a reference manual and many pages have been designed in "cut-sheet" format for ease of duplication, information trading and later additions or subtractions.

Commissioner Questions and Comments

- Praises the organization and innovative strategies of the plan, but questions if the plan

will truly be adopted.

- Grace Crunican fully supports the plan and has already started to disseminate its contents to all department heads.
- Recognizes that implementation will be important.
 - SDOT has requested that the Office of Arts & Cultural extend the artist in residence program for 2006.
 - Daniel recommends a “creative director” at SDOT to help to steward the process.
- Feels the plan presents a great historical foundation of Seattle’s public art and suggests this is a good standard for rethinking what we do and why.
- Appreciates the integrated design approach.
- Asks if artist could be involved in customizing SDOT’s standard street elements.
- Congratulates Daniel on the presentation and content of the art plan.
- Appreciates the specificity of the plan with information focusing on the larger strategies within Seattle neighborhoods, as well as the unique and distinct character details.
- Encourages distributing this plan to nation wide.
 - Will feature on NPR - Smart Cities on November 29th 2005
- Thinks that there has been a loss in the beauty and craft of surface treatment and advocates that is addressed.
 - Hope that a craft masonry person will be employed by the sidewalk division of SDOT.
- Is reinvigorated by the possibilities the plan proposes, but wonders what SDOT response was to the plan
 - Generally very supportive
 - A few proposals were removed owing to liability and safety issues.
- Wonders if SDOT can adopt a more liberal perspective to street art