

NE 130th Street Infill Station C2 Package

*Seattle Design Commission
60% Schematic Design Review*

May 20, 2021

Agenda

Introductions

Background

Project Phasing & SDC Focus

Outreach

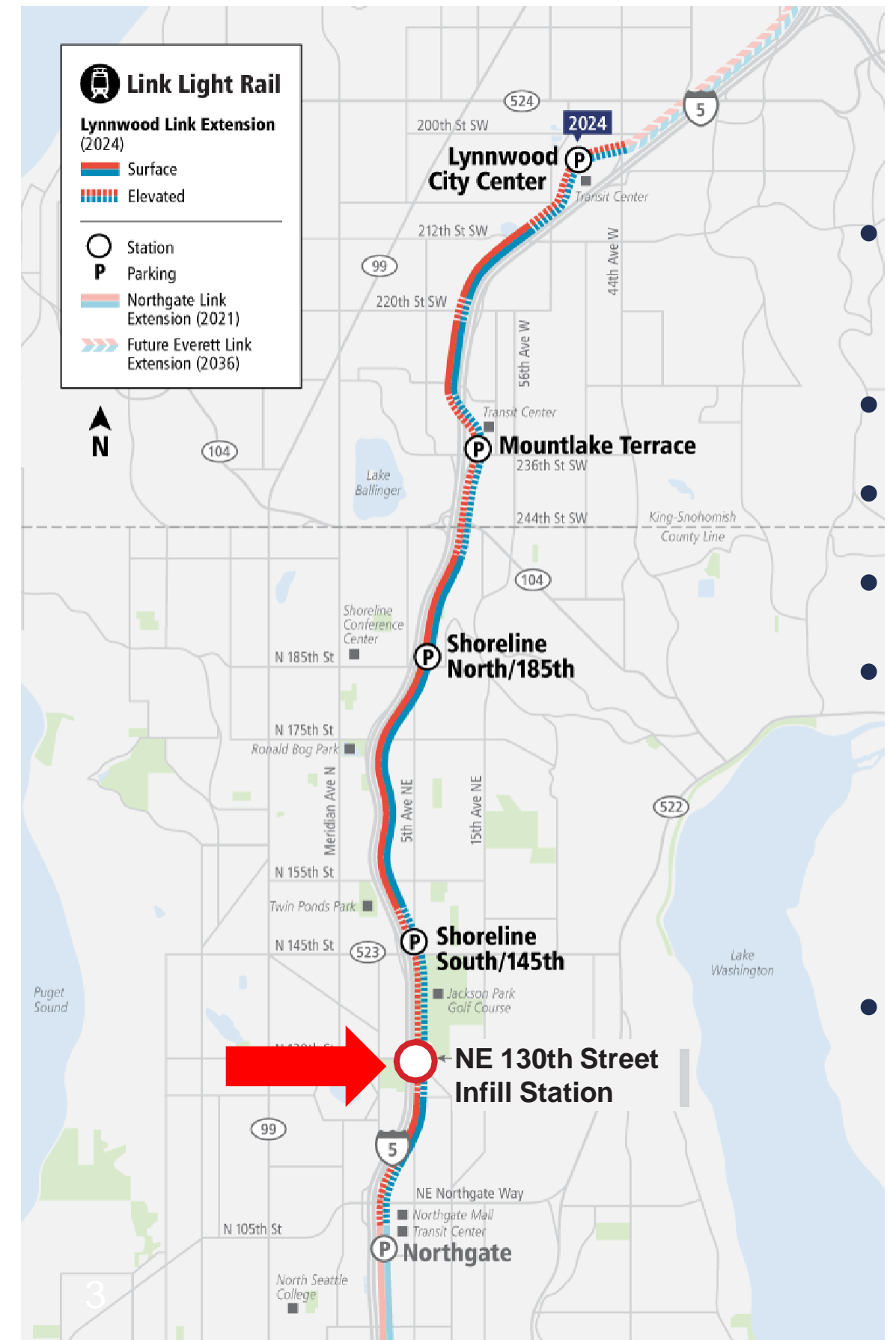
Design Concept & Station Design

- Station Architecture
- Site Improvements
- Interim Landscaping
- Sustainability

BACKGROUND

NE 130th Station Overview

- Included in 2016 ST3 Plan as infill station
- Located at 5th Ave NE and NE 130th St
- Timing in ST3 Plan - start 2024, open 2031
- Elevated side-platform station
- Estimated 3,400 daily boardings
- Travel time
 - Westlake, 15 min
 - SeaTac / Airport, 53 min



Challenges of Infill Construction

Over 60k daily riders affected, nearly 90% from Snohomish and North King subareas

- Service delays due to single-tracking
- Potential system-wide delays
- Restricted construction window – nighttime construction, single tracking
- Repeated neighborhood impacts
- Higher construction costs



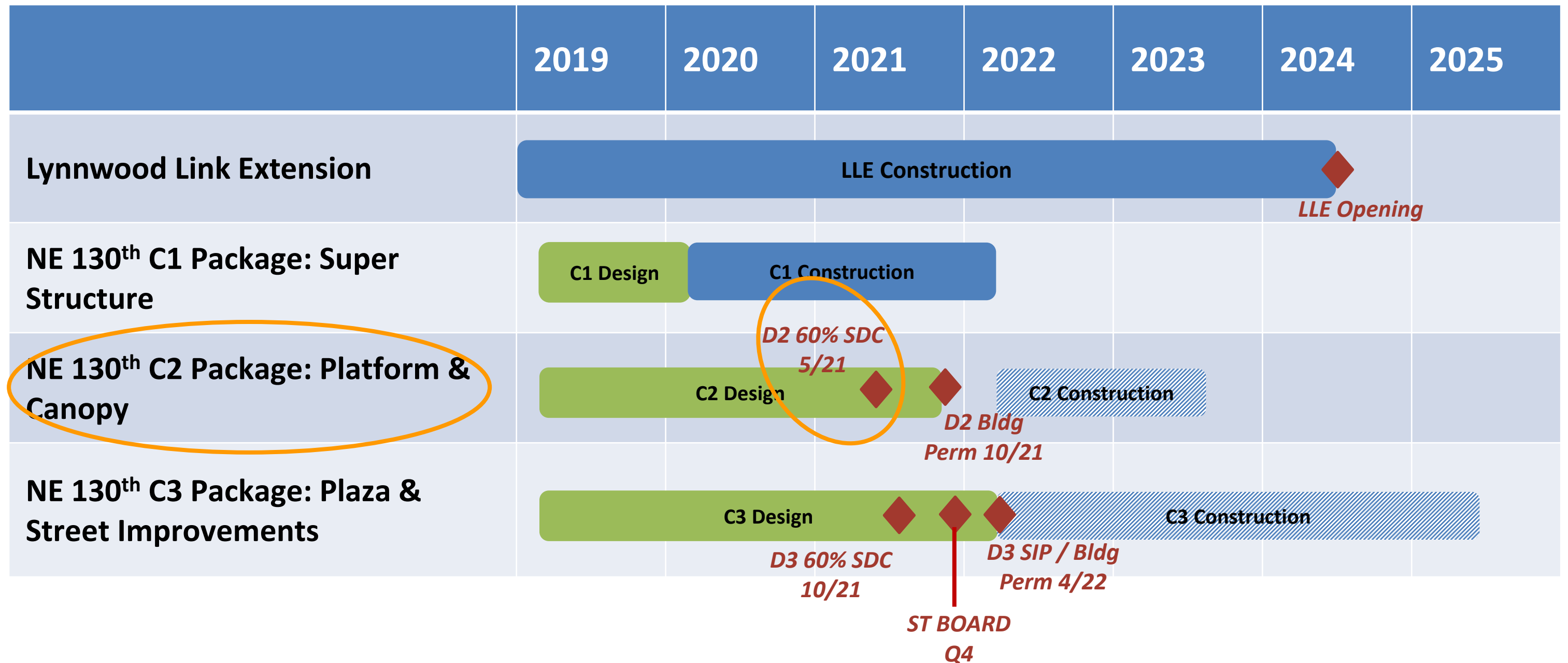
Addressing Challenges of Infill Construction

Actions to minimize disruption to LLE

- Sept. 2018 accelerated preliminary engineering
- Feb. 2020 accelerated construction of C1 and final design
- *Q4 2021 Board Decision on construction of C2 & C3 and opening*



Schedule: Alignment with LLE & Packages

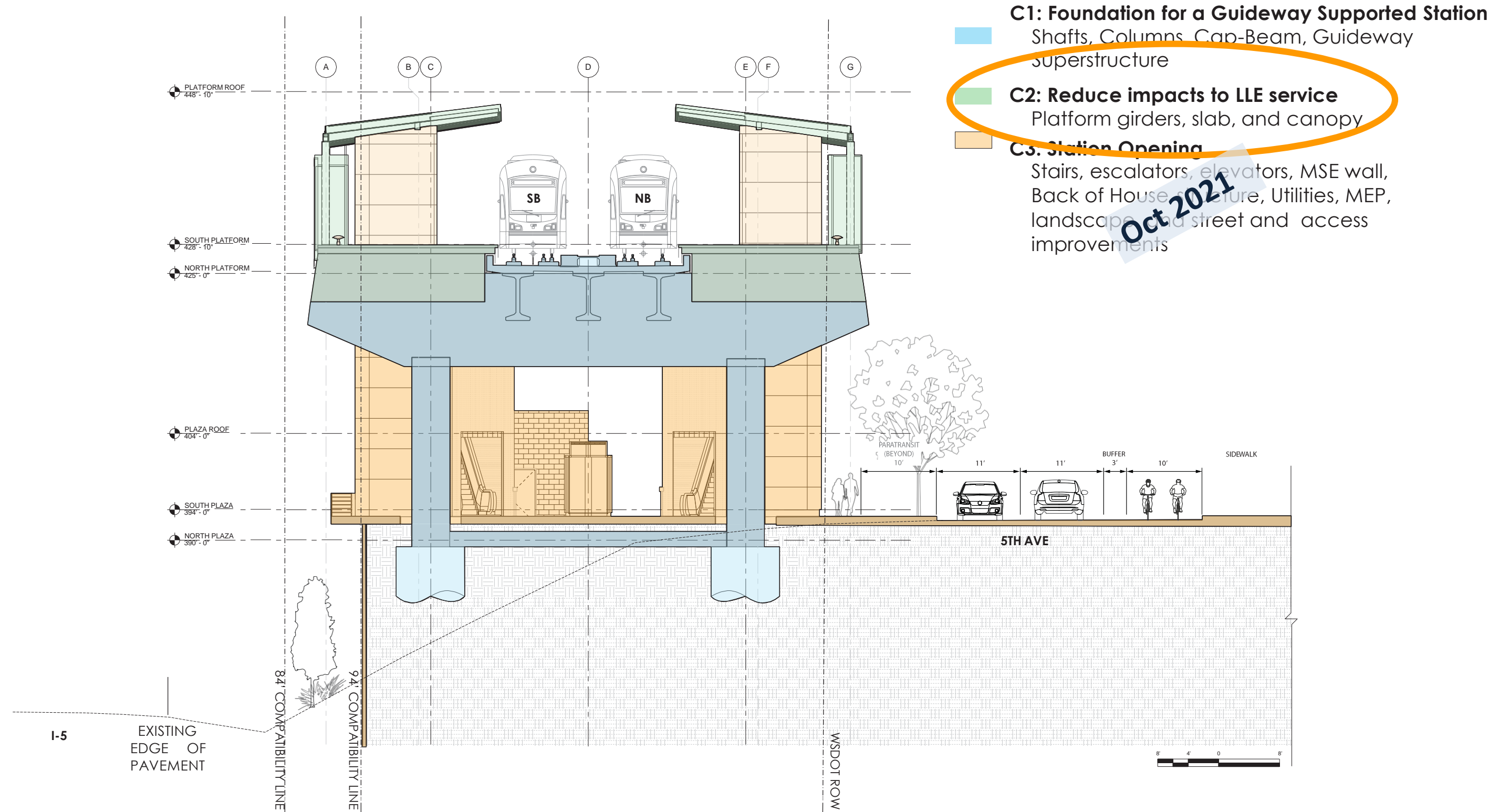


SDC 30% Requests, C2 Only

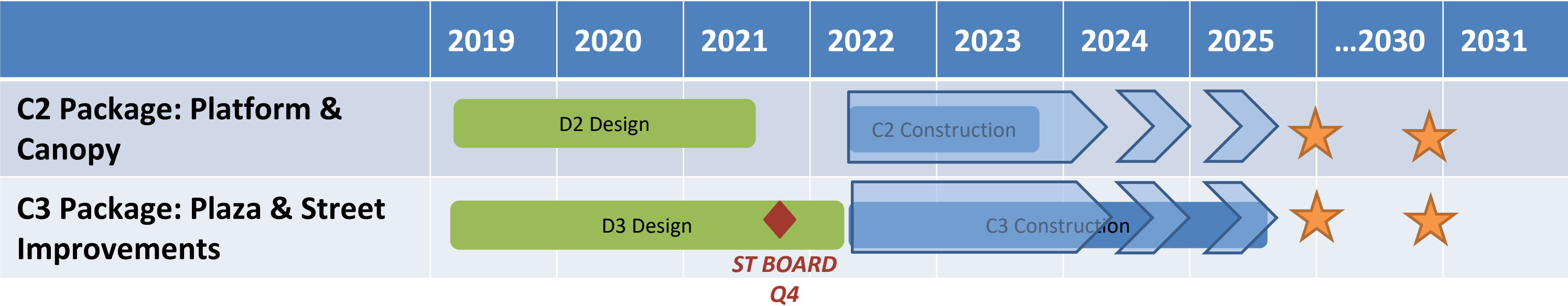
- ✓ 13. Continue to think about the overall design process and phasing as it results to **potential budget limitations**. Think about how design could change as a result of budget cuts and consider what elements should be retained.
- ✓ 14. Make sure **KC Metro** is available for questions at future SDC meetings.
- ✓ 15. Provide more information about the overall **sustainability strategy** as well as specific onsite **stormwater management**
- ✓ 16. Provide more information on how **community outreach** is moving forward in an **equitable way** as a result of COVID-19 restrictions. Show how **art and culture** is integrated into outreach conversations.
- ✓ 17. Provide **cross sections** that give a better sense of the relationships between the various levels and how the facility will be experienced. Provide cross sections that show the scale of the building – entrances, **upper platform**, ancillary facility, etc- as it relates to site elevation and circulation as well as cross sections that represent vegetation along I-5 and 5th Ave.

PROJECT PHASING

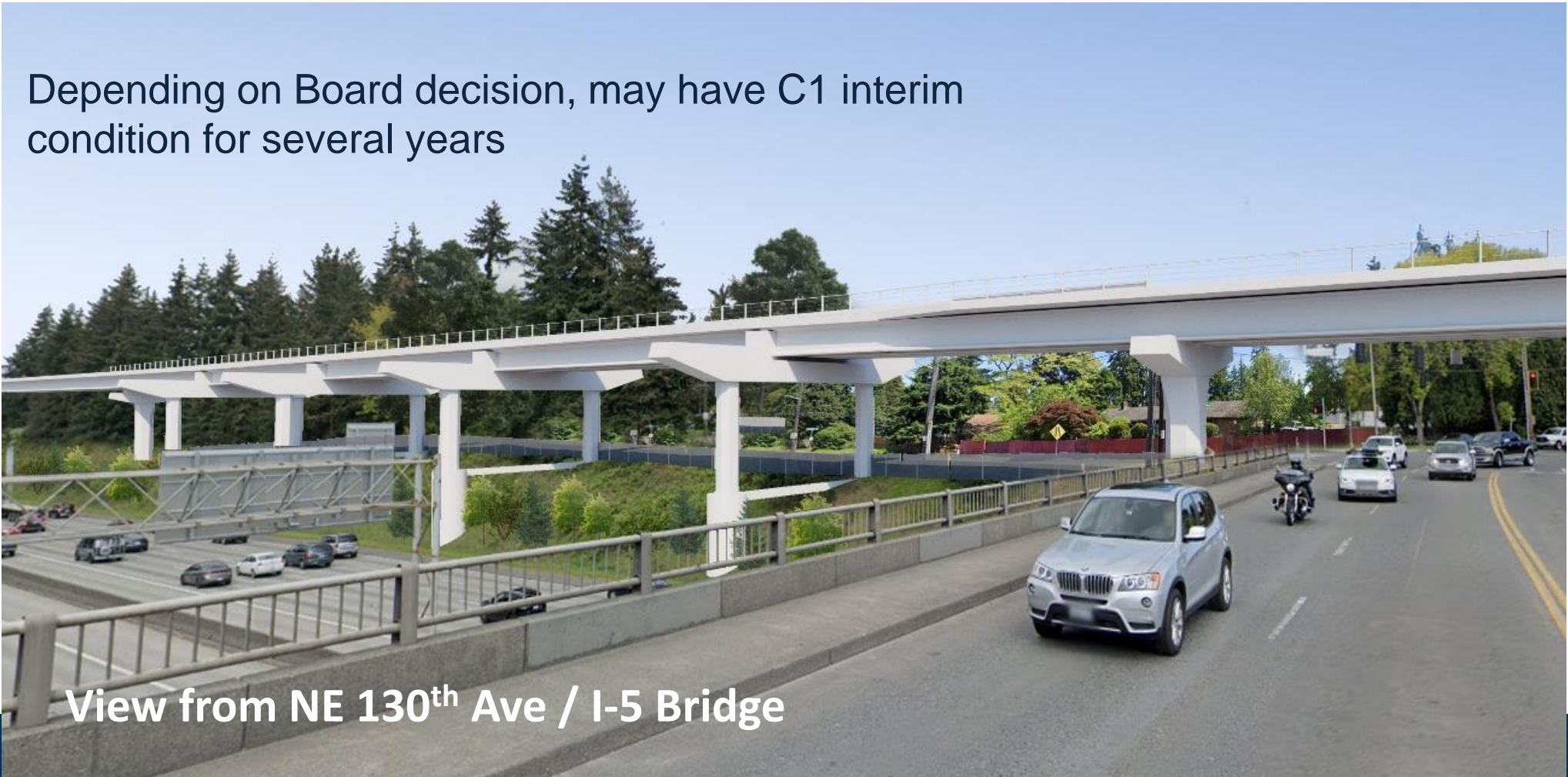
Project Phasing: Interim Condition



Interim Condition Option 1: C2 & C3 Later

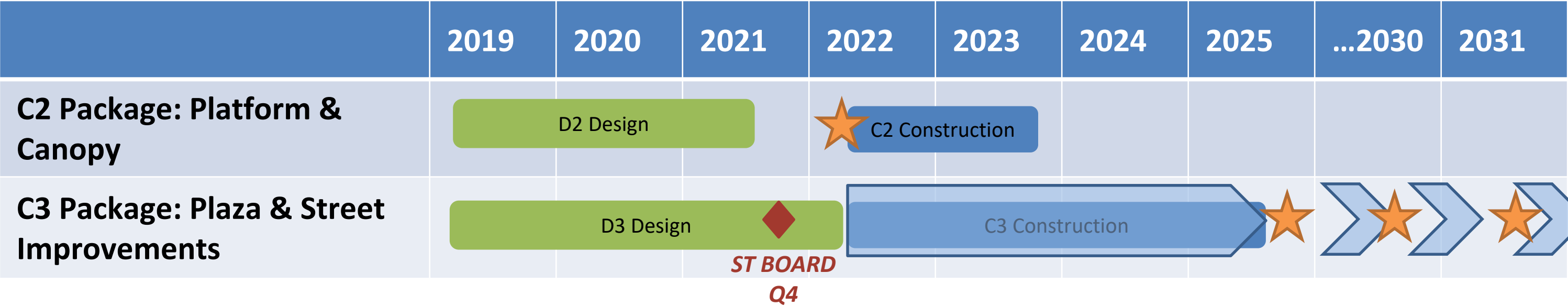


Depending on Board decision, may have C1 interim condition for several years

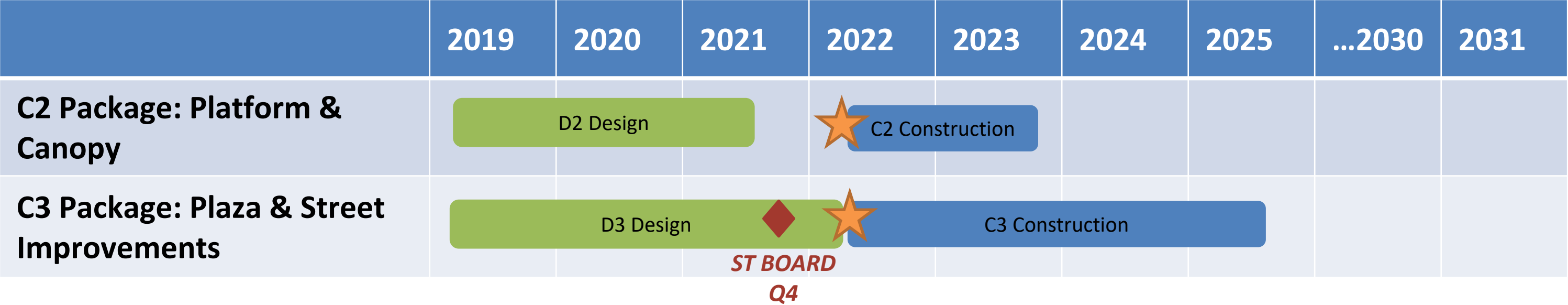


View from NE 130th Ave / I-5 Bridge

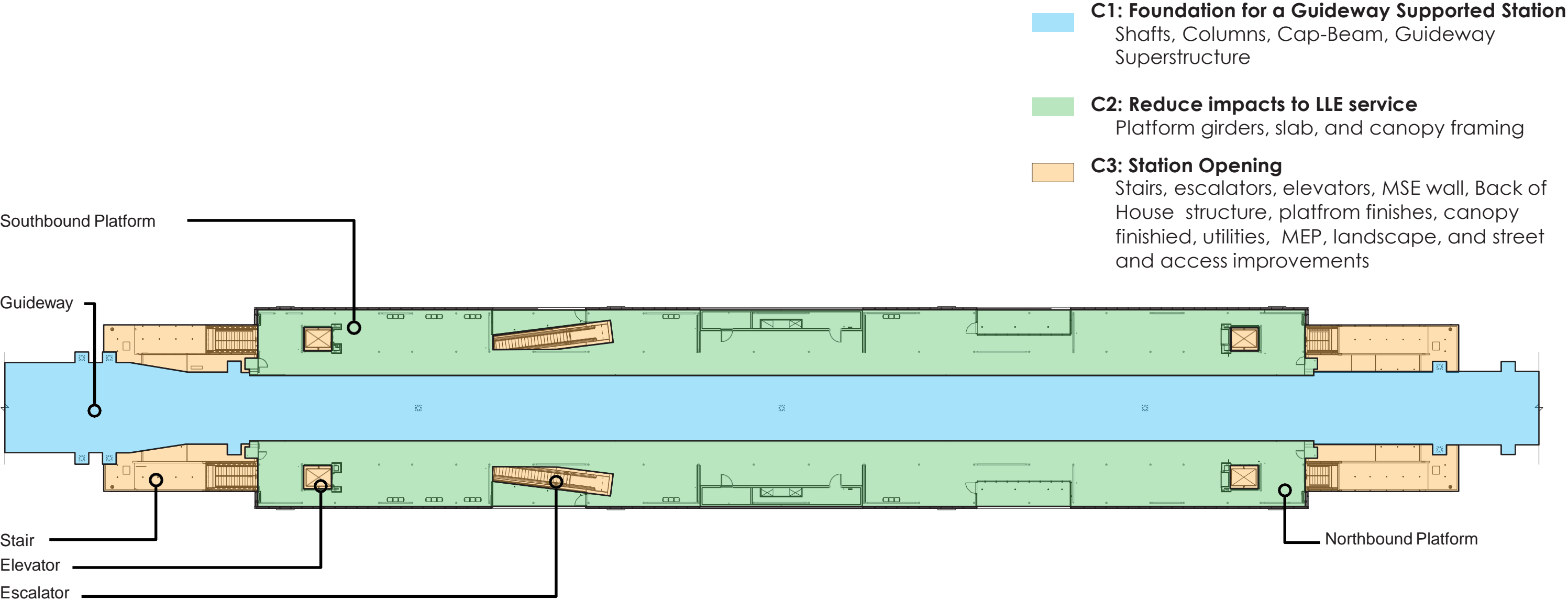
Interim Condition Option 2: C2 now, C3 Later



Interim Condition Option 3: C2 & C3 Now



C2 Package - Platform Plan View

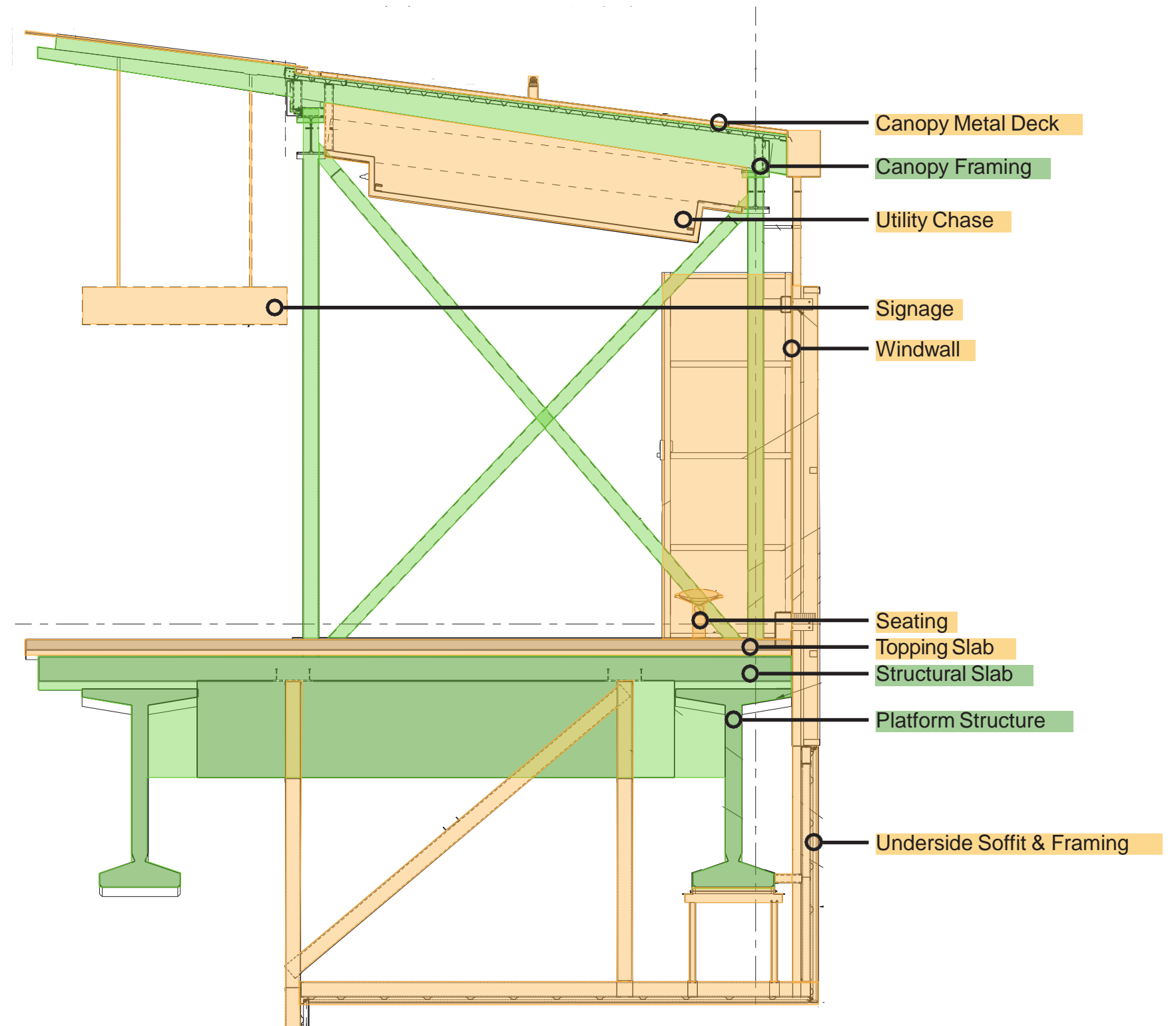
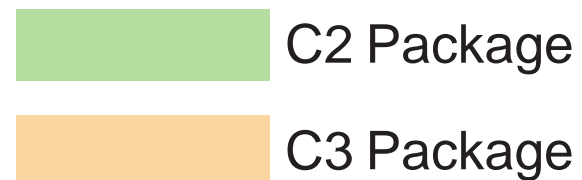


C2 Package

C2 Package Consists of:

- Platform Structure
- Canopy Frame
- Minor Utility Work

C2 Does Not Include Finishes



Partner Collaboration

Collaborated on **Pre Engineering**, 2019

- 3 Design workshops
- 3 Traffic Analysis workshops
- 2 Value engineering sessions

Collaborating on **Final Design**, 2020/21

- Biweekly IDT meetings
- Permit Submittals: 30%, 60%, 90%
- Permits: SIP and Building

Design Elements

- Station access points
- Paratransit and Bus stop locations
- Traffic analyses
- Street and access improvements



OUTREACH

Community Demographics

Bitter Lake Village
1.1 mile / 21 min walk from station

Lake City
1.7 mile / 27 min walk from station

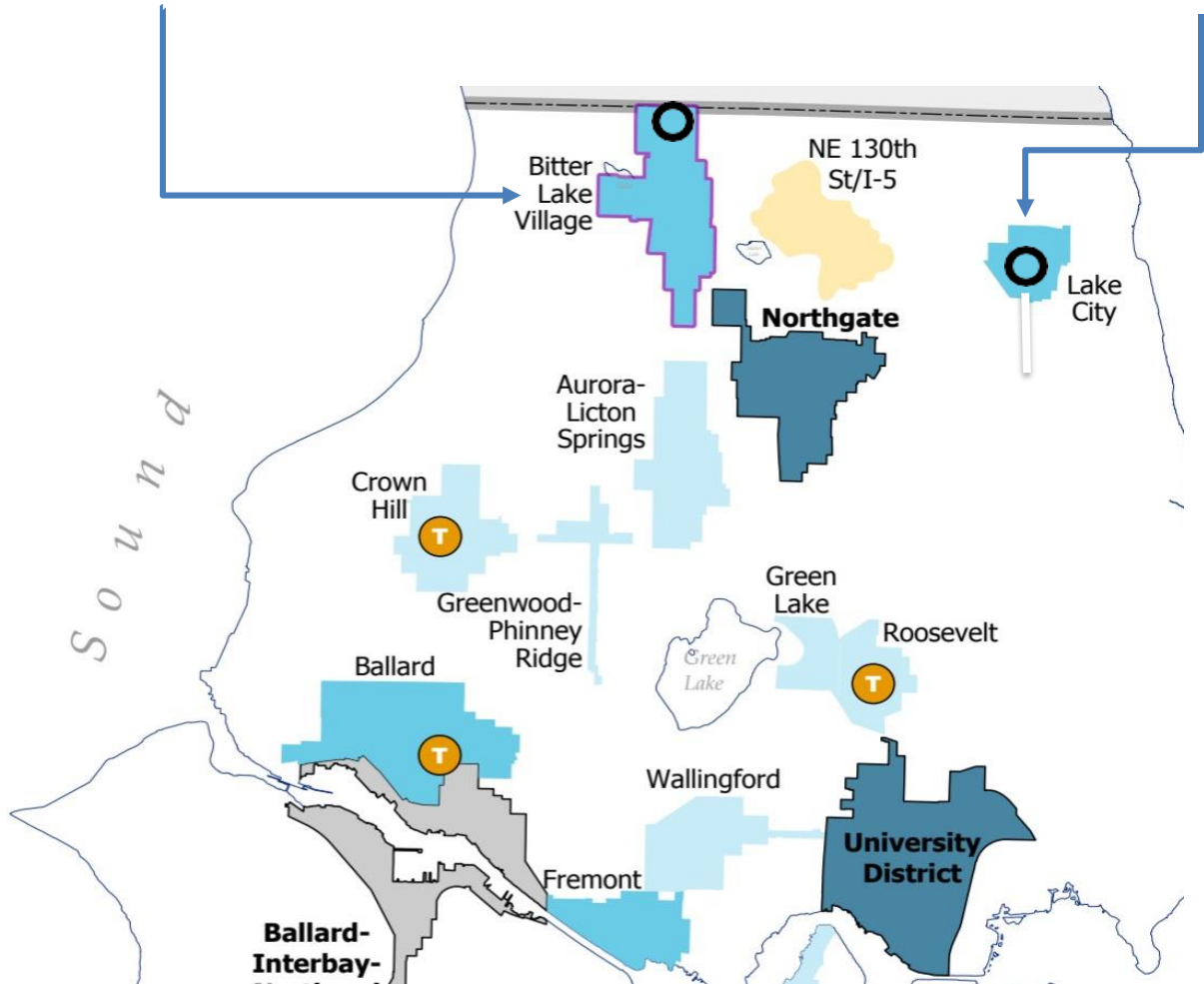


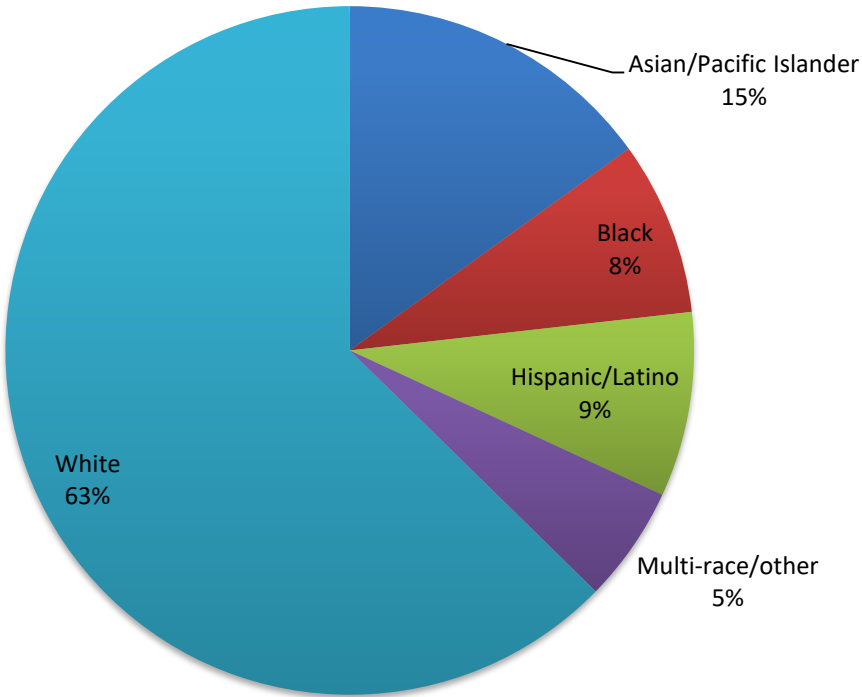
Figure courtesy of Office of Planning & Community Development:: Comprehensive Plan 2019

Demographic Research¹ – Based on research and outreach to the community, Sound Transit translates project materials into:

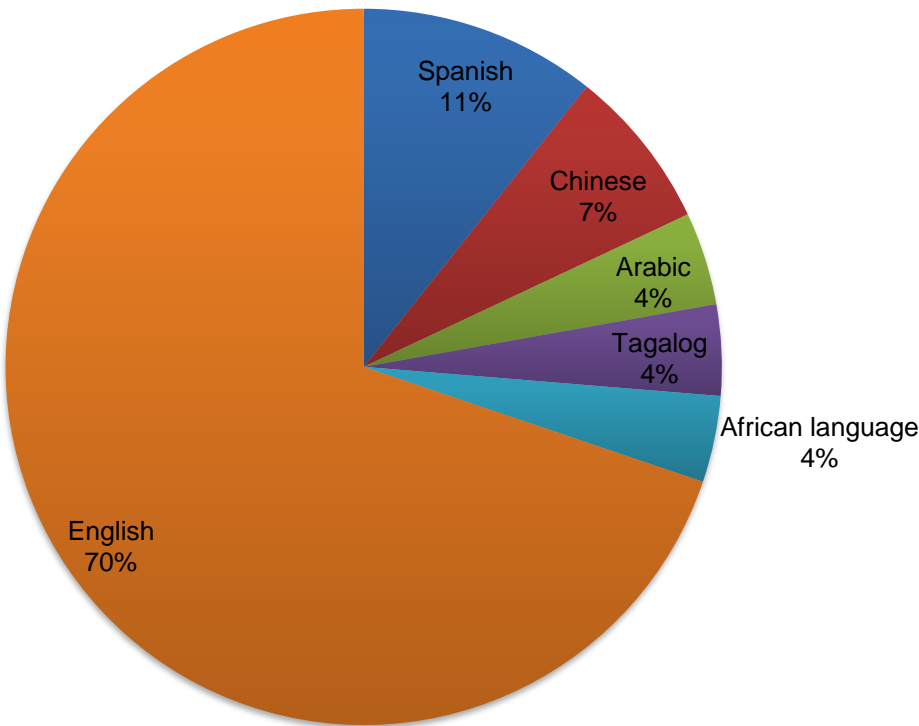
- Spanish
 - Simplified Chinese
 - Arabic
 - Amharic
- Somali
 - Tagalog
 - Urdu

¹ = Based on findings by the American Community Survey (2017) and the US Census Bureau

Demographics of the Project Area



Languages Spoken at Home



Community Outreach

Goal: Inform and consult general public

- Postcard direct mailing to 26,000 residents and businesses
- Project updates via the LLE project listserv, partner organizations
- Share updates, paid advertisement, encourage email sign ups, online open house, email, social media, postcards and flyers
- Reach out to community/business organizations to distribute information and gather input

Community Outreach

Seattle/Shoreline Open House – Feb 26, 2019

Seattle Station area planning workshop – Mar 13; Sept 28, 2019

Seattle Design Commission – Apr 16, 2020

Community/Business Organization outreach – Sep 21-Oct 9, 2020

Online Open House – Oct 12- Nov 30, 2020

Seattle Design Commission – May 20, 2021

90% Online/Open House - TBD



Community-Based Organizations

Target communities: Latinx, Ethiopian, Somali, Chinese, Arab, Pakistani, Eritrean

Community partner organizations:

Organization/Communities	Email alerts	Translated folios	Other
District 5 Neighborhood Council*	✓	✓	
Refugee Women Alliances	✓	✓	Staff who speak the language on site as well
Hunger Intervention Lake City**		✓	Ad with food distributed
Somali Community Service of Seattle	✓	✓	
Cascade Bicyclist Club	✓	✓	
Sound Generation/Lake City Seniors		✓	Featured in monthly newspaper. Ad also distributed with food to seniors.
Identified area of high traffic for diverse communities***		✓	

* = Neighborhoods include Aurora Licton, Bitter Lake, Broadview, Cedar Park, Greenwood, Haller Lake, Lake City, Licton Springs, Little Brook, Maple Leaf, Matthews Beach, Meadowbrook, North Park, Northgate, Olympic Hills, Pinehurst, Victory Heights, Wedgewood

** = Works with senior citizens, low income families and Latinx, Chinese, and Arab communities

*** = Al Farooq Masjid, Umer Farooq Masjid Lake Ballinger, Islamic Center of North Seattle, Taftan Bazaar & Halal Meat, Asian Family Market Seattle

Community Outreach - Media

Ethnic media outlets

The Seattle Medium

A Message From The People... To The People



La Raza
del Noroeste



tú Decides
You Decide - A Bilingual Newspaper

Community Outreach - Media

Sample ads



Más servicio de tren ligero para el norte de Seattle

[Aprende más](#)



© 2020, La Raza del Noroeste and Sound Publishing, Inc.

[Boletines](#) · [About Us](#) · [Terms of Use](#) · [Privacy Policy](#) · [Contact Us](#)



SEATTLE CHINESE TIMES

焦點 電子報 NEW 即時新聞 社區新聞 西城工商 E食住行 生活副刊 ENGLISH 線上商店



tú Decides
You Decide - A Bilingual Newspaper

Advertise with us! Call us at (509)591-0495 or toll free at (866)317-7796, email info@TuDecidesMedia.com

NEWS

Front Page

Video News

Past Issues

News Noticias

Submit Press Releases

Opinion

SERVICES

Digital Newspaper

Subscribe

Upload Ad files

ADVERTISE

Media Kit

Print Rate Sheet

Digital Rate Sheet

EVENTS

Submit Events

Show all Events

CONTACT US

Contact Us

ABOUT US

Ad Rate Card

Mission Statement

Commercial

GUEST BOOK

Guest Book

Welcome to tú Decides bilingual newspaper

What makes our newspaper unique? We are reaching the community through English and Spanish. As a bilingual newspaper, we realize that our readers come from many different backgrounds. Each one has their own personal tastes when it comes to getting their news.

Our publication is distributed free of charge every Friday. We recognize that the future is here and that more readers are now reading newspapers in a digital format so we are excited to have over 18,000 digital newspaper subscribers throughout Washington. You can also find printed copies in grocery stores, gas stations, restaurants, libraries, and of course online at www.tudecidesmedia.com.

Join the over 18,000 subscribers that receive our free digital newspaper by clicking here.

Share

Click here for PDF Washington version



Time on their hands
Pandemic closes schools and forces children back to work > 15

STATE: Justices strike down \$30 car tab initiative > 14

SPORTS: Seahawks hope Wilson is just getting started > 13

STATE: Early surge at ballot drop boxes being seen > 11

Share

Click here for PDF Washington version



tú Decides
You Decide - A Bilingual Newspaper

Sign Up for our FREE Digital Newspaper

Port of Seattle
APPLY NOW!

SOUTH KING COUNTY FUND GRANTS FOR STRONGER, GREENER COMMUNITIES

Más servicio de tren ligero para el norte de Seattle
Proyecto de estación de relleno de tren ligero NE 130th Street
[Aprende más](#)

More light rail service for North Seattle
NE 130th Street light rail infill station project
[Learn more](#)

Community Demographics

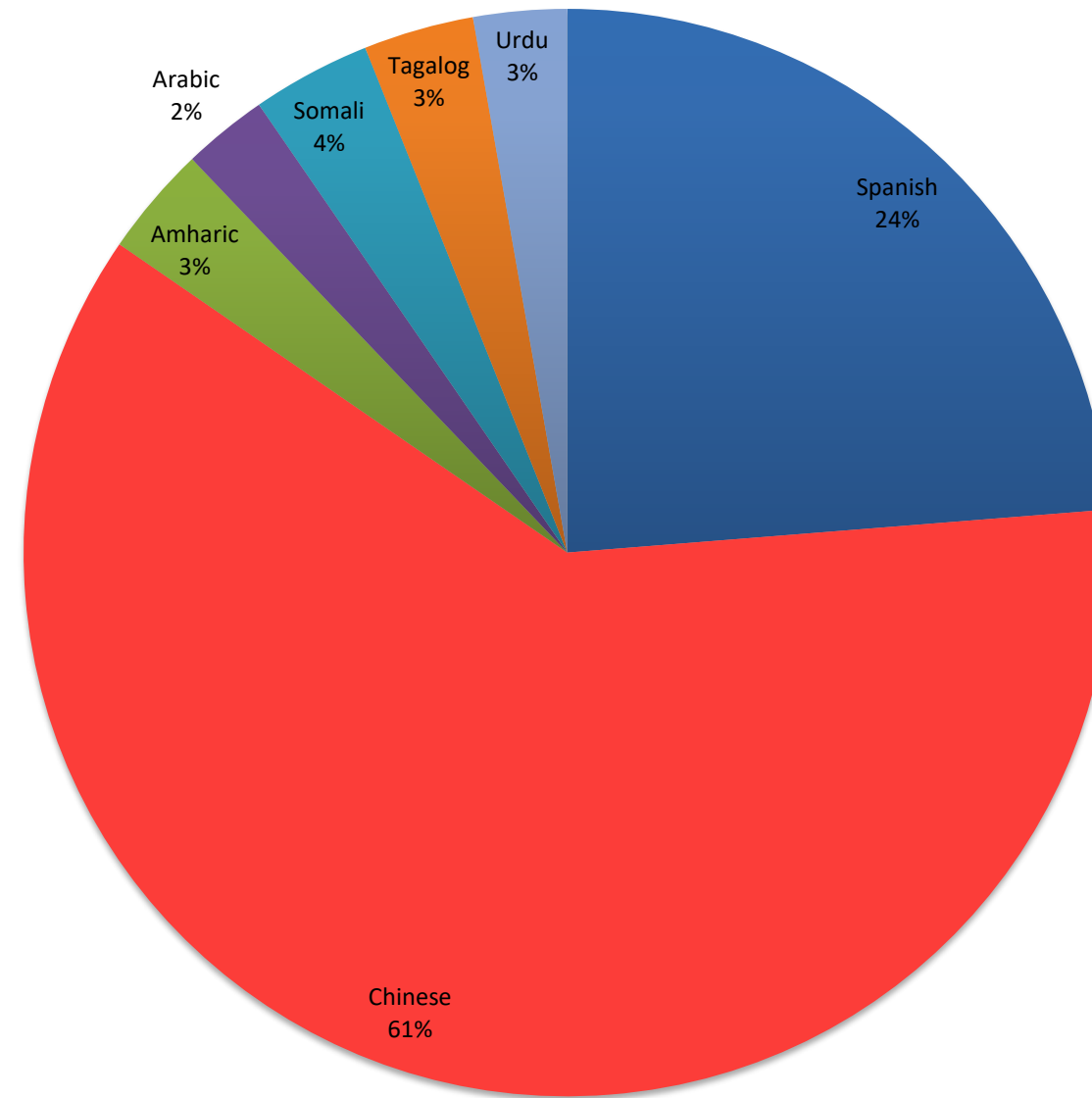
Ethnic media outlets

- Tu Decides
- The Seattle Medium
- Seattle Chinese Times
- La Raza Del Noroeste

Online open house participants

- 161 in-language site visitors

In-language Site Visitors



Community Outreach – Next Steps

- Approach with online open house
- In person open house
- How will we serve individuals who work outside of the typical hours
- 90% Open House, October 2021

DESIGN CONCEPT STATION DESIGN

Neighborhood Context

Neighborhood

- Single Family Residential
SF-7200
- Multi-Family Residential
NC1-55 (M)
- Mixed-Use:
Residential / Commercial LR3 (M)

Location & Access

- WSDOT Right of Way
- Parallel to 1-5
- Lynnwood Link Light Rail
-South Northgate Station
-North 145th Station
- Route to Nearby Urban Villages
- Local Bus Routes

Local Amenities

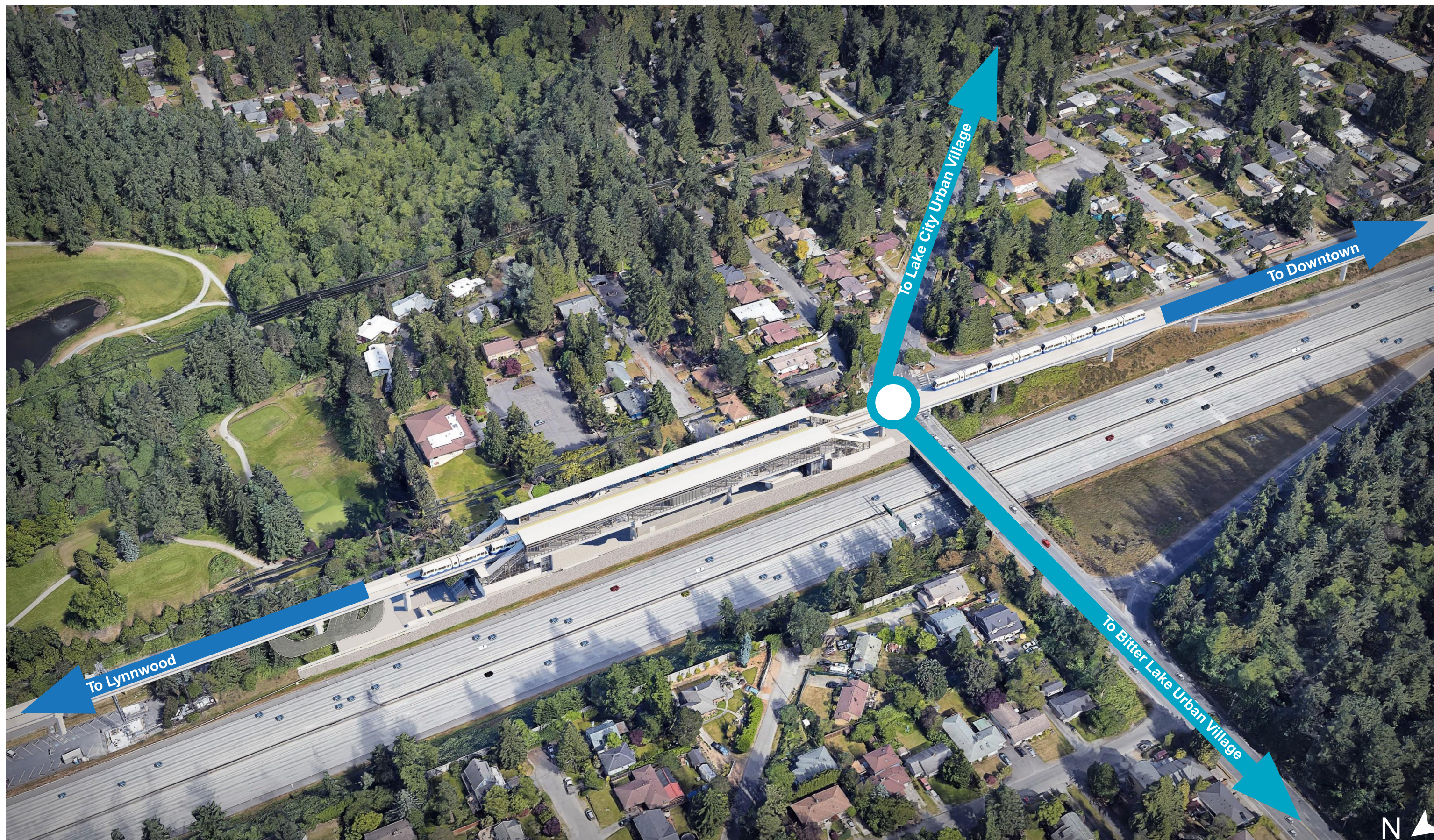
- K-12 Schools located with 1 mile radius
 - Ingraham High School
 - Lakeside School
 - Lakeside Middle School
 - Seattle Jewish Community School
 - Pinehurst K-8 School

- Parks and Recreation

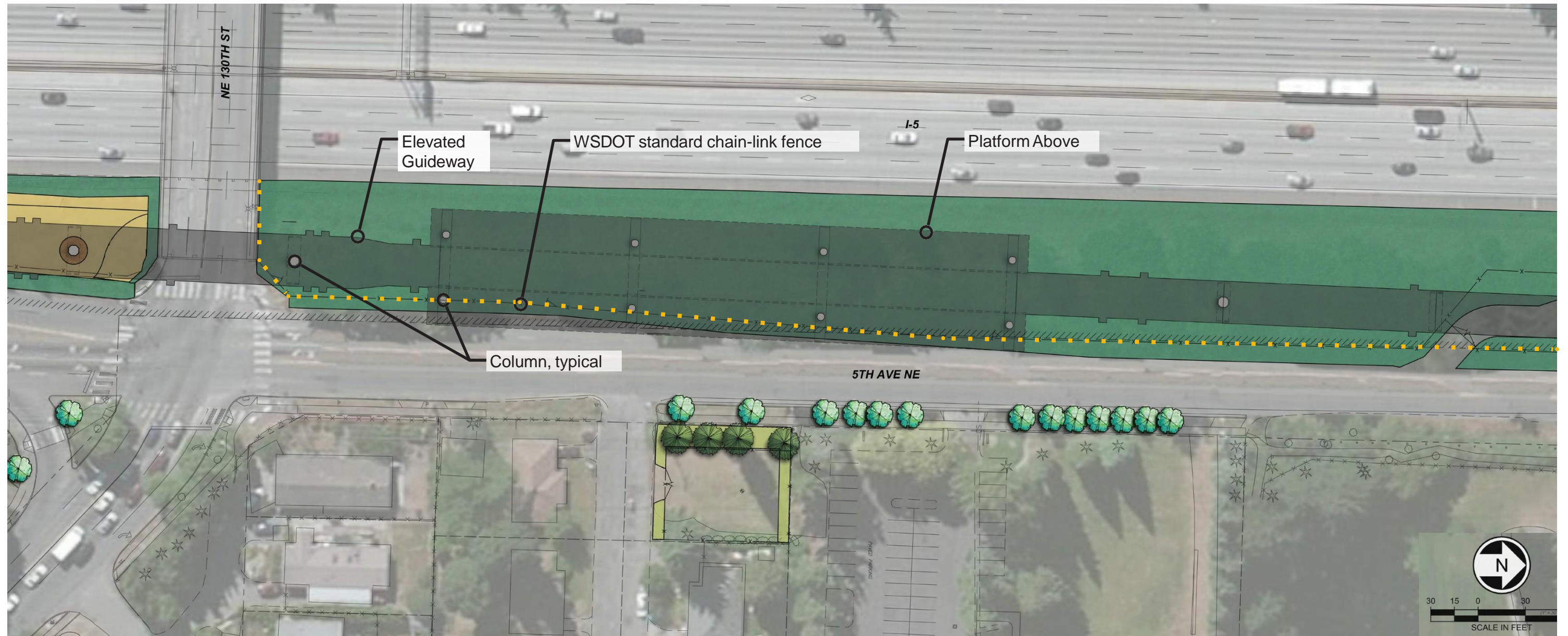
- Thornton Creek Trail

- Potential Mobility Improvements
per OPCD 130th & 145th Station Area Planning

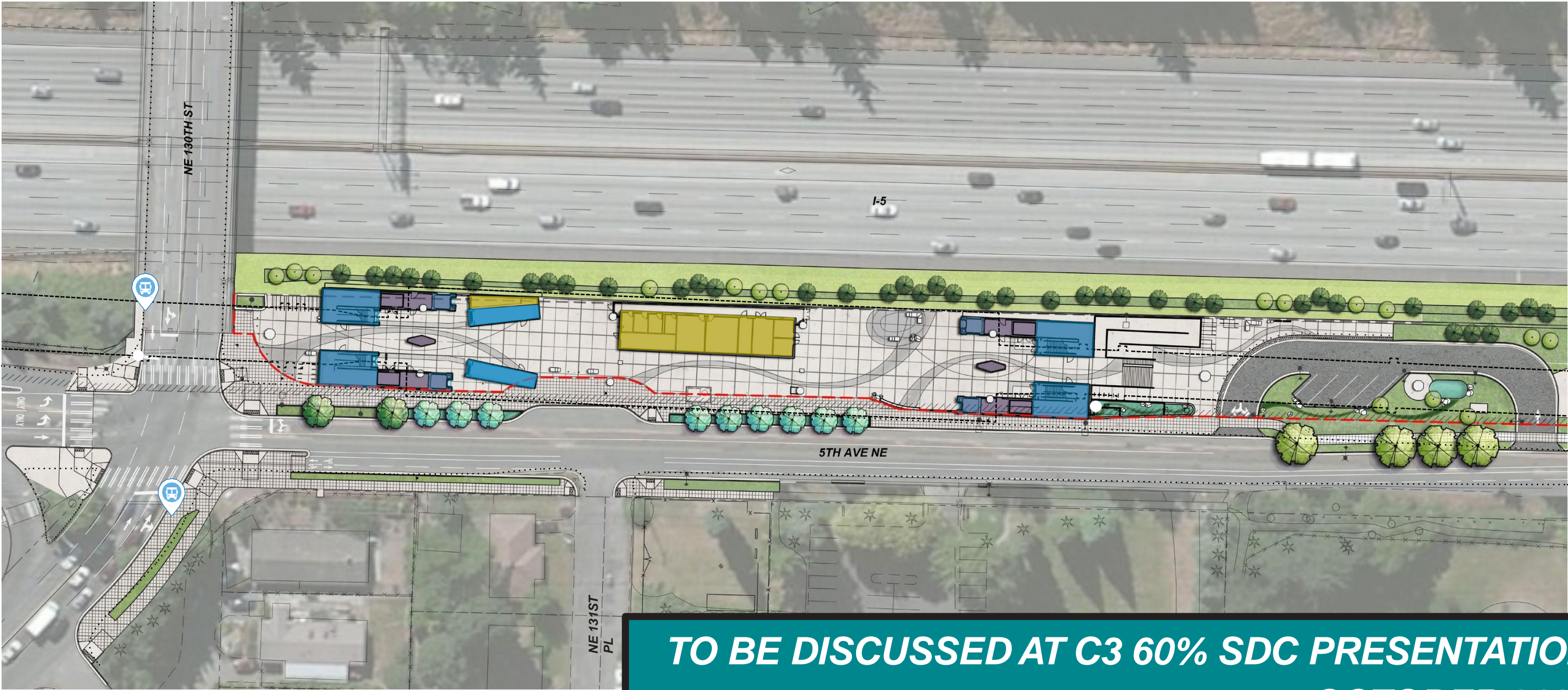




C2 - Interim Site



C3 - Final Site



- Vertical Circulation
- Ancillary Space
- Information & Ticketing
- Guideway Overhead
- Existing Curb
- Proposed Bus Stop

**TO BE DISCUSSED AT C3 60% SDC PRESENTATION
OCTOBER 2021**



C2 - Interim View from NE 130th & 5th Ave



C3 - Final View from NE 130th & 5th Ave



***TO BE DISCUSSED AT C3 60% SDC PRESENTATION
OCTOBER 2021***

C2 - Interim View from NE 130th St Bridge



C3 - Final View from NE 130th St Bridge

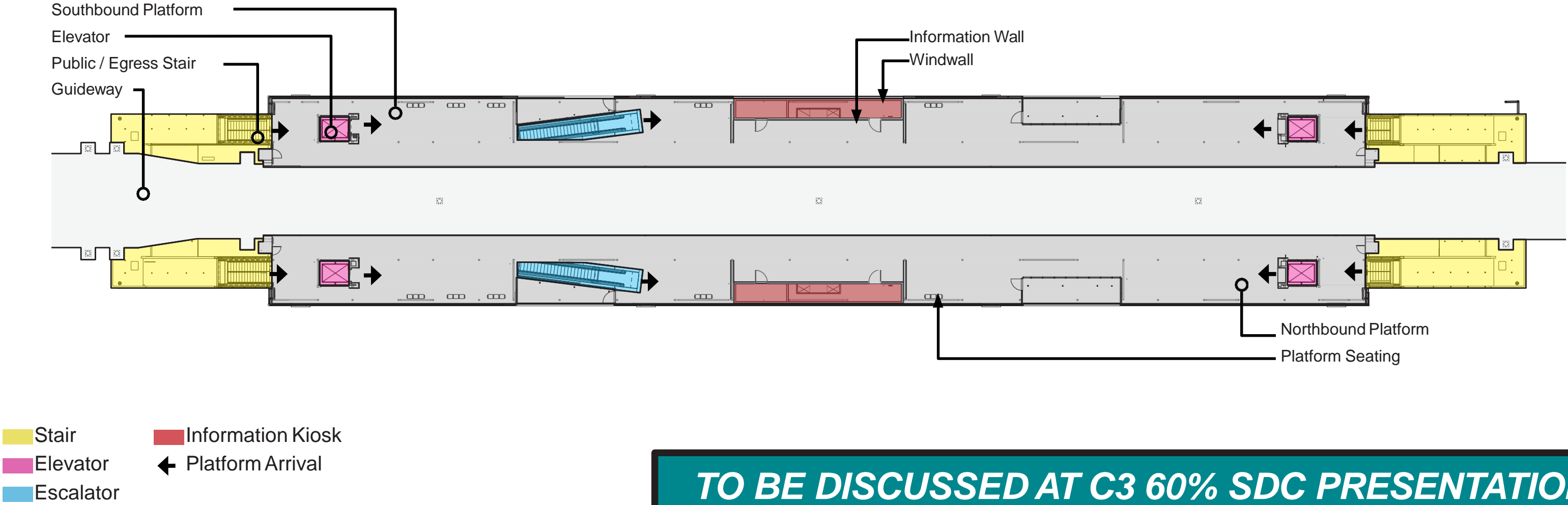


***TO BE DISCUSSED AT C3 60% SDC PRESENTATION
OCTOBER 2021***

C2 - Interim North Entry



C3 - Final Platform Plan



**TO BE DISCUSSED AT C3 60% SDC PRESENTATION
OCTOBER 2021**



C3 - Final Southbound Platform View



***TO BE DISCUSSED AT C3 60% SDC PRESENTATION
OCTOBER 2021***

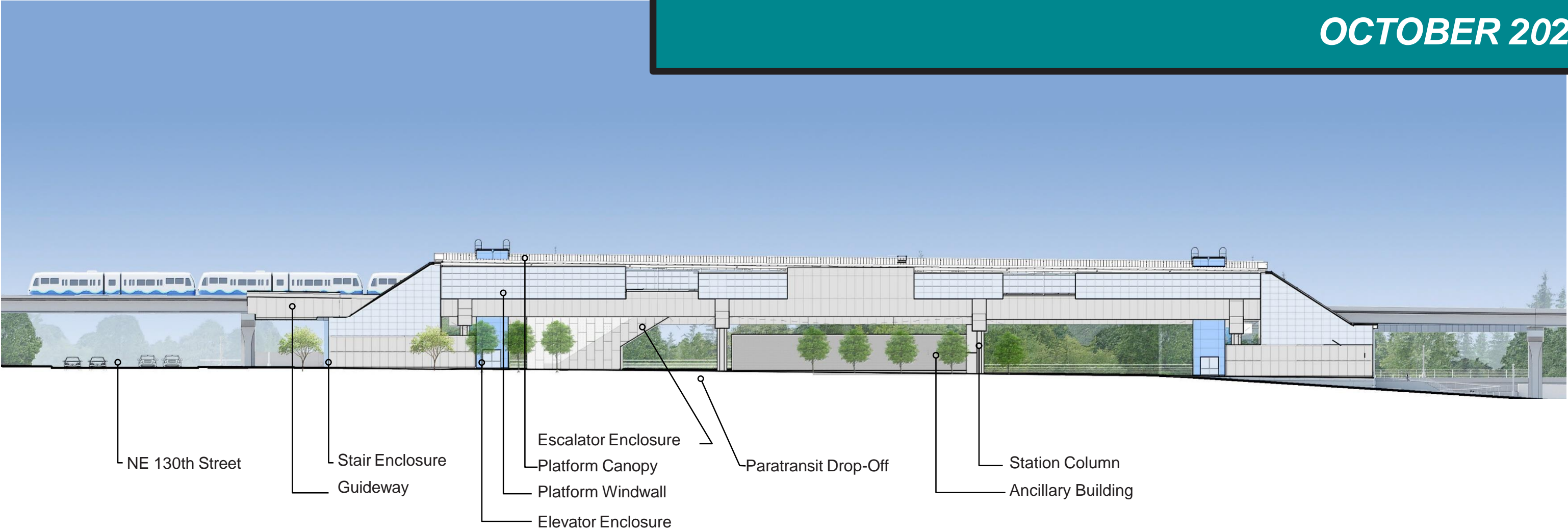
C3 - Final Lobby Section



**TO BE DISCUSSED AT C3 60% SDC PRESENTATION
OCTOBER 2021**

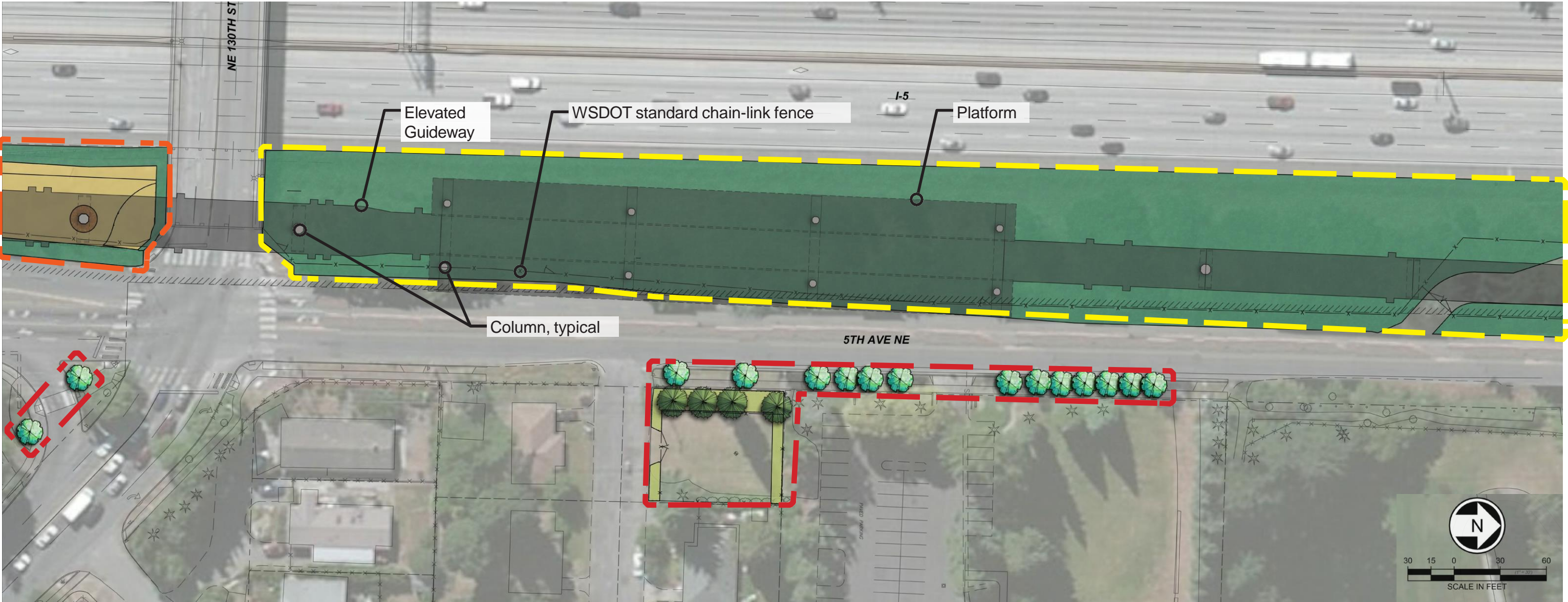
C3 - Final East Elevation

**TO BE DISCUSSED AT C3 60% SDC PRESENTATION
OCTOBER 2021**



INTERIM LANDSCAPING

Lynnwood Link (LLE) Planting Plan Interim Condition



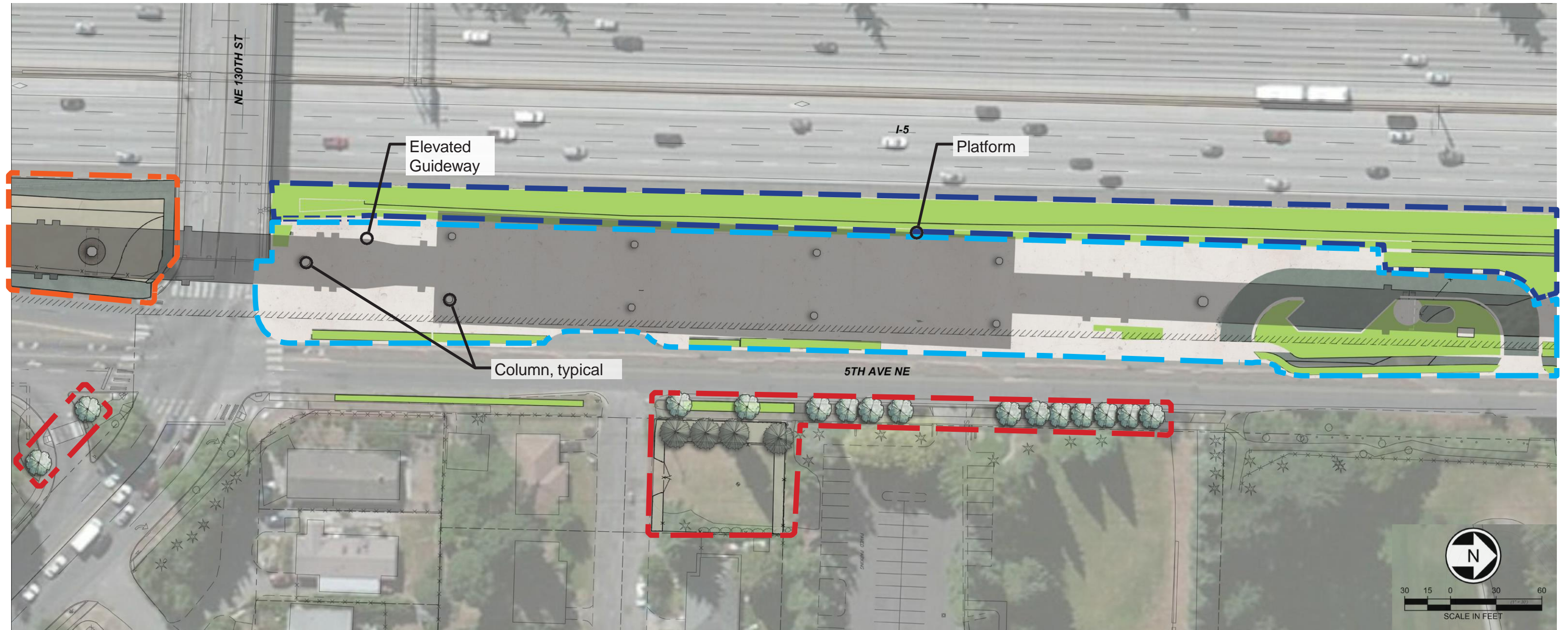
Legend

- Erosion Control Seeding (WSDOT Standard)
- Lawn Seeding
- L200 Corridor Planting**
Various mixes



- LLE Planting Area (WSDOT Approval)
- LLE Interim Condition (WSDOT Approval)
- LLE Planting Area (SIP Permit Approved)





NE 130th Station (D3) Proposed Planting Areas





Legend

-  Proposed Planting Area
-  Plaza

Lynnwood Link Ext

-  Existing LLE Planting to Remain (WSDOT Approval)
-  Existing LLE Planting to Remain (SIP Permit Approved)

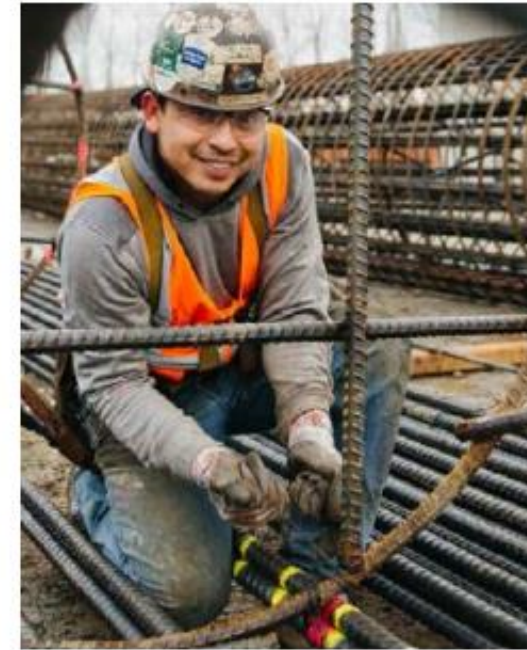
NE 130th Station

-  D3 NE 130th Station Area (Future SDCI Approval)
-  D3 NE 130th Station Planting Areas (WSDOT Approval)

DESIGN CONCEPT SUSTAINABILITY

Sustainability at Sound Transit

- Enabling **PEOPLE** to move freely and affordably by providing regional transit service
- Promoting stewardship that conserves the **PLANET's** natural environment
- Supporting community **PROSPERITY** by enabling residents and businesses to save time and money



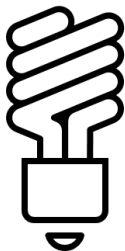
Sound Transit promotes sustainability by developing and operating the regional transit system and fostering smart growth

Agency-Wide Sustainability Impacts 2019



AVERTED

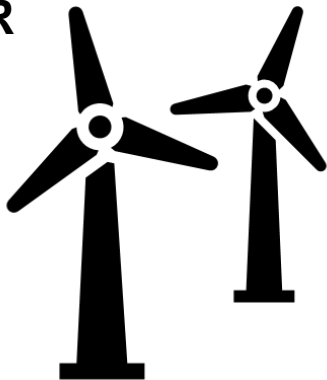
392,000+
METRIC TONS
of greenhouse gas emissions



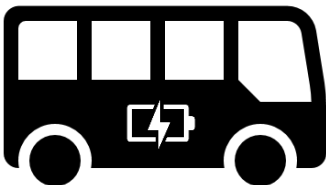
Saved nearly

\$620,000
from
23 ONGOING
RESOURCE EFFICIENCY
PROJECTS

PURCHASE POWER
AGREEMENT
to buy
**WIND
POWER**
directly from PSE and
**REDUCE GREENHOUSE
GAS EMISSIONS**



Initiated a
**BATTERY
ELECTRIC BUS**
FEASIBILITY STUDY
for Sound Transit bus services.



PLATINUM LEVEL
RECOGNITION

from the
**AMERICAN PUBLIC
TRANSPORTATION ASSOCIATION**

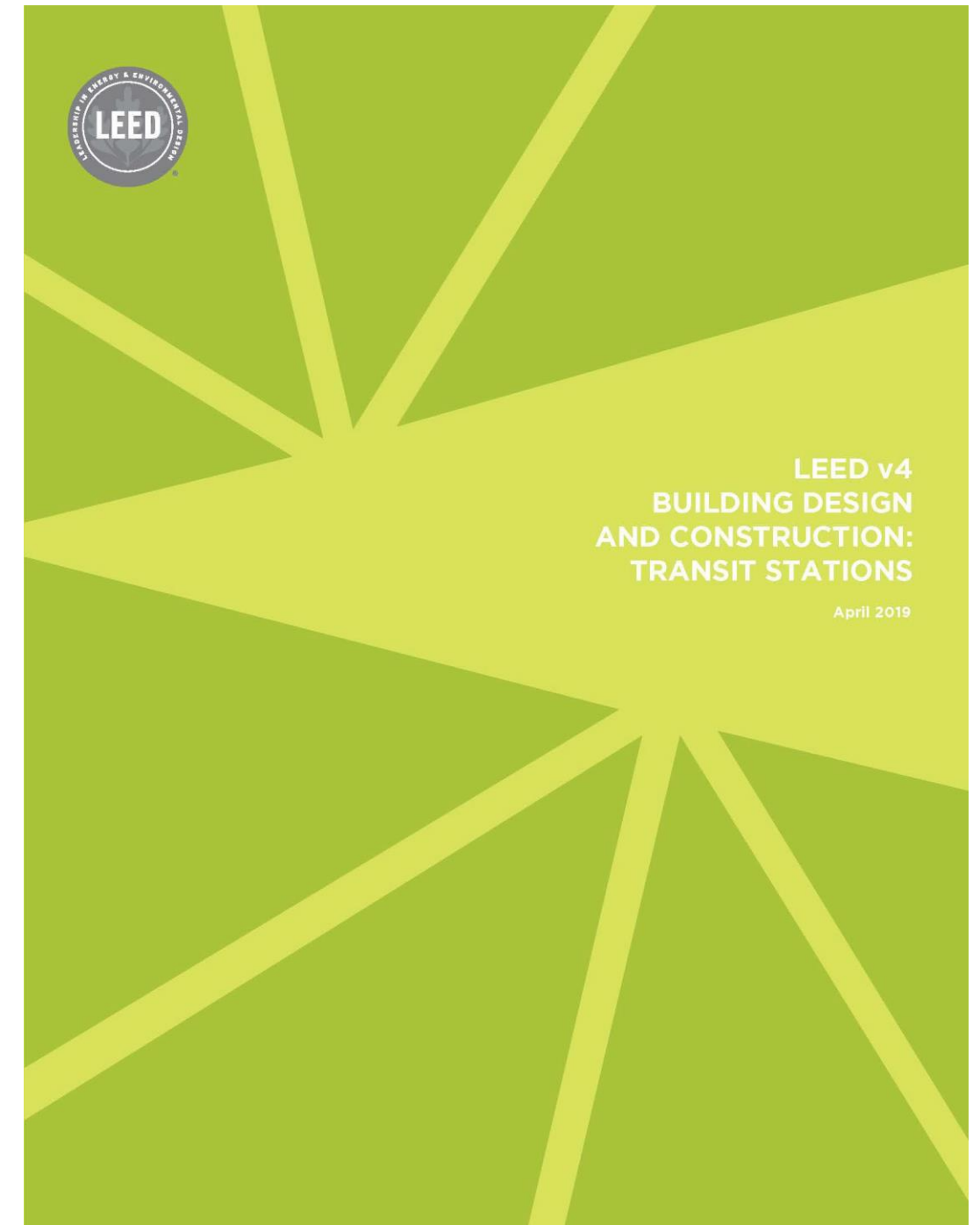


Adopted an
**AGENCY WIDE INTERNAL
EQUITY &
INCLUSION POLICY**

Sustainability and LEED BD+C: Transit Station

Sound Transit projects are first in the U.S.

LEED Silver is required. Gold is the target.



Sound Transit Sustainable Design Priorities

CONSERVE NATURAL RESOURCES



Maximize efficiency
(energy, water,
materials)

Implement restorative
design features

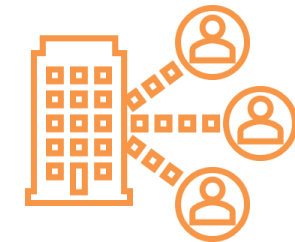
DESIGN & BUILD FOR THE LONG TERM



Consider materials with
long life-cycles

Evaluate use of
materials for resilience,
durability, service life

GREEN BUILDING & SUSTAINABLE INFRASTRUCTURE



Consider green building
& sustainable
infrastructure in
coordination with TOD &
Access Improvements

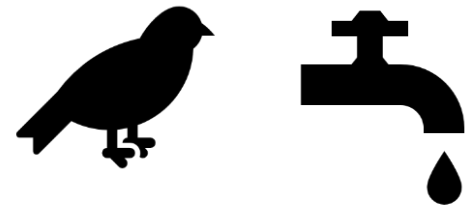
Sustainability & LEED Transit Gold

ACCESS



Bicycle facilities
Pedestrian access and
intermodal connectivity
Universal accessibility
Equitable development
and social equity
Sustainable education

ENVIRONMENT



Resiliency Study
Protecting and restoring
habitat
Water use reduction
Vibration and noise
reduction

MATERIALS



Life cycle assessment
of materials
Sustainable materials
Pervious Paving

ENERGY



Heat island and light
pollution reduction
Optimizing energy use
and metering
Thermal comfort and
lighting control for
indoor occupied spaces

D2 Sustainability Strategies

- Construction Activity and Pollution Control
- Construction Waste Management
- Sustainable materials
 - Platform concrete specified with supplementary cementitious materials to reduce carbon footprint of structure and enclosure by at least 10%.
 - Further reductions possible in construction.
 - Environmental Product Declarations for concrete and steel.



Questions & Comments

Thank you.



 [soundtransit.org](https://www.soundtransit.org)

