



Georgetown to Downtown Safety Project Seattle Design Commission - (60% Design)

Jonathan Frazier, SDOT Project Developer

7/20/2023 Department of Transportation

Our Vision, Mission, Values, & Goals

Seattle is a thriving equitable community powered by dependable transportation. We're on a mission to deliver a transportation system that provides safe and affordable access to places and opportunities.

Core Values & Goals:

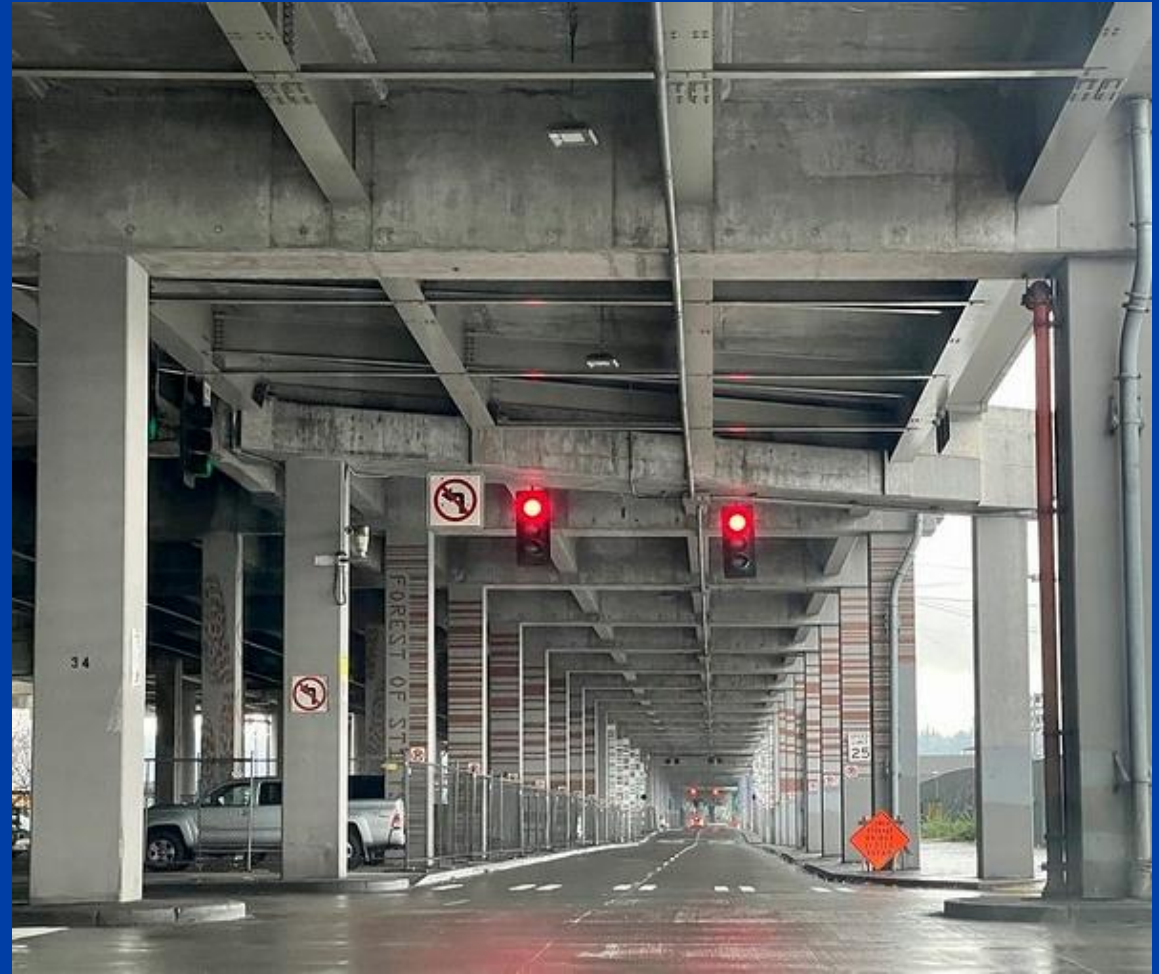
Equity, Safety, Mobility, Sustainability, Livability, and Excellence.

Presentation Agenda

- Project Overview
- Design (60%)
- Questions

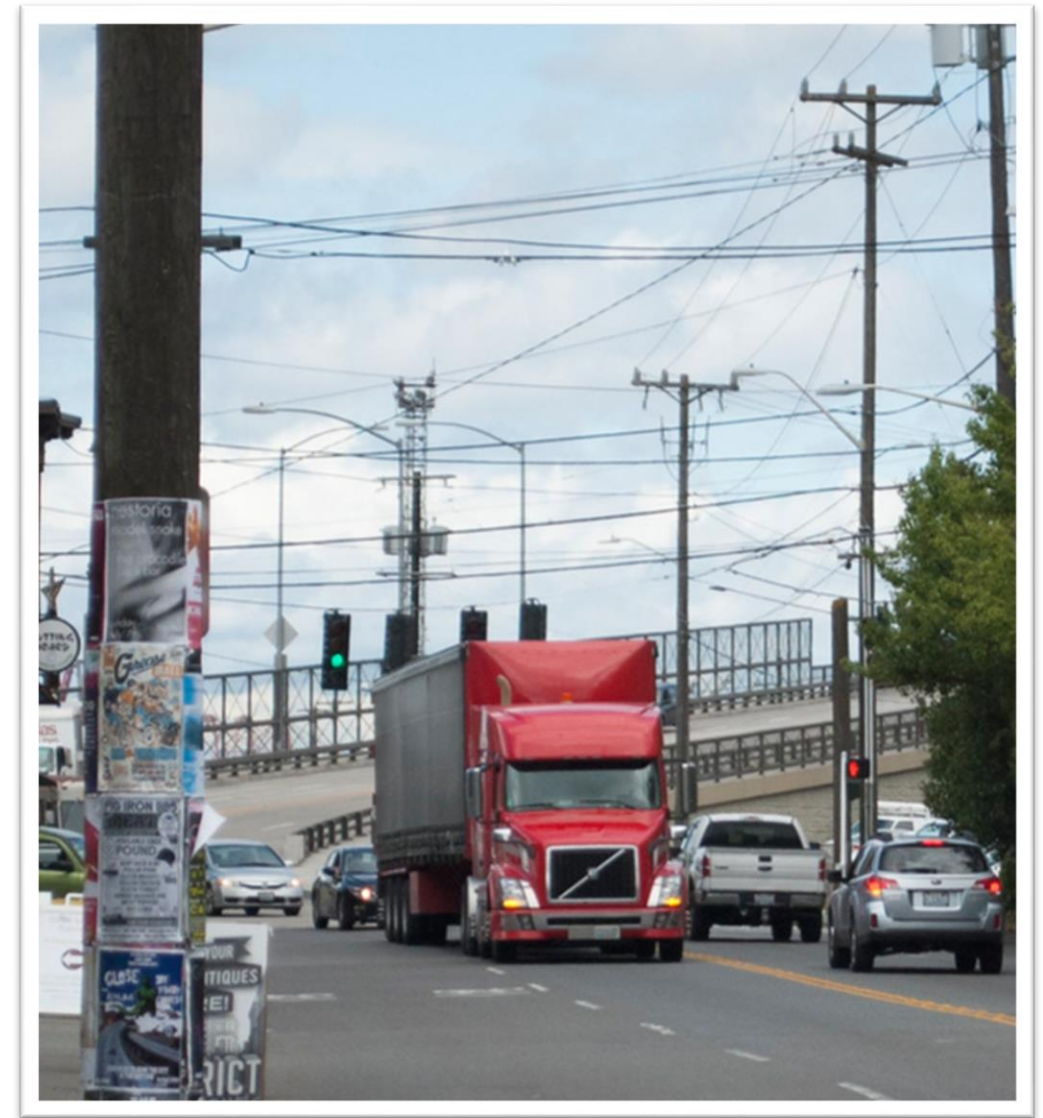


Project Overview



Project Need & Vision

- Routes in Duwamish Valley a community priority during citywide 2019 Bicycle Master Plan outreach
- Connect Duwamish Valley and Georgetown neighborhoods to regional bike network
- Provide better access to SODO jobs and Link light rail
- Maintain freight and transit access



Outreach

Who we've met with:

- Companies:
 - FedEx, UPS, Franz Bakery, Second Use Building Materials, Platt Electric, Alaskan Copper Company, Particle Studio, Elysian Brewing
- Community groups
 - SODO Business Improvement Area, Georgetown Community Council, South Park Neighborhood Association, Duwamish Valley Safe Streets, Cascade Bike Club, Seattle Neighborhood Greenways, Ampersand Bike Club
- Boards and agencies
 - Seattle Freight Advisory Board, Seattle Design Commission, Seattle Bicycle Advisory Board, King County, Sound Transit

Outreach tactics:

- 1-on-1 briefings with businesses
- Site visits to observe business operations
- Presenting to board and community group meetings
- Joining community group bicycle ride
- Hosting virtual public meetings
- A-frames and signage posted along project route
- Attending community events and festivals

Response to 30% design public feedback

- Continued coordination with businesses and projects in the neighborhood
- Improved safety at driveways, intersections, and transitions
- Ensured lighting along project route meets design standards
- Added safety measures around Airport Way S and S Lucille St
- We also heard from CBC with specific asks re: north & south end connections and separation between bike and vehicles



Design (60%)

Configuration



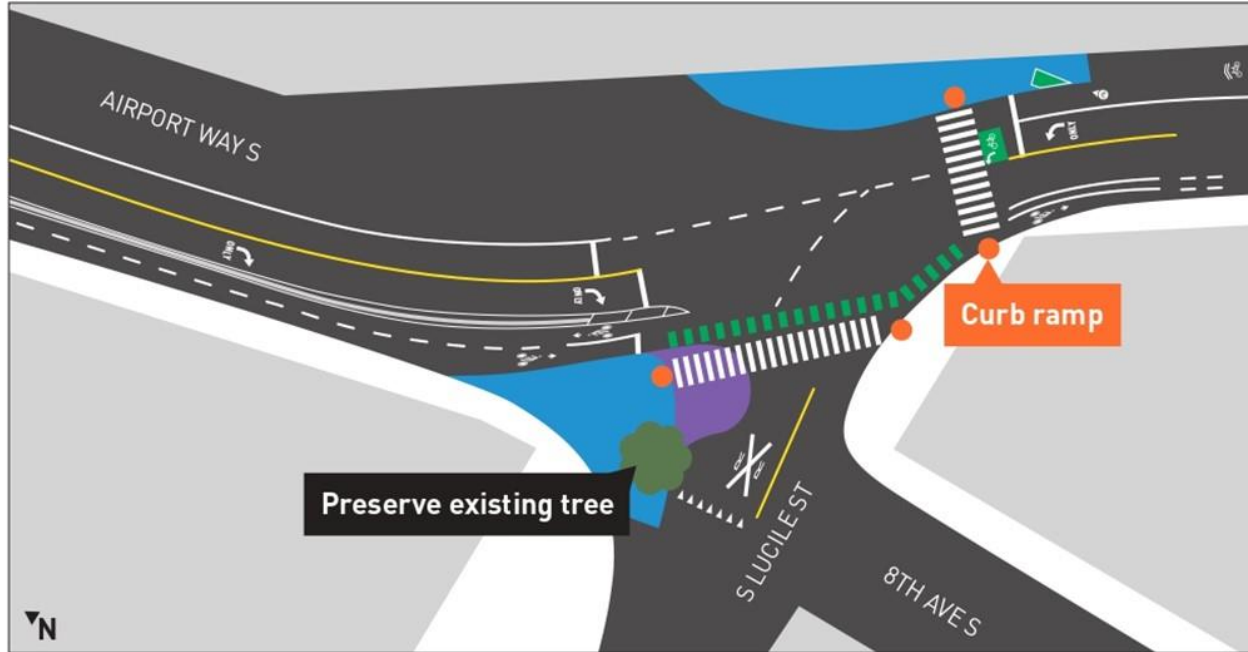
Two-way protected bike lanes
NE 40th St, Seattle



One-way protected bike lanes with parking
Avalon Way SW,
Seattle

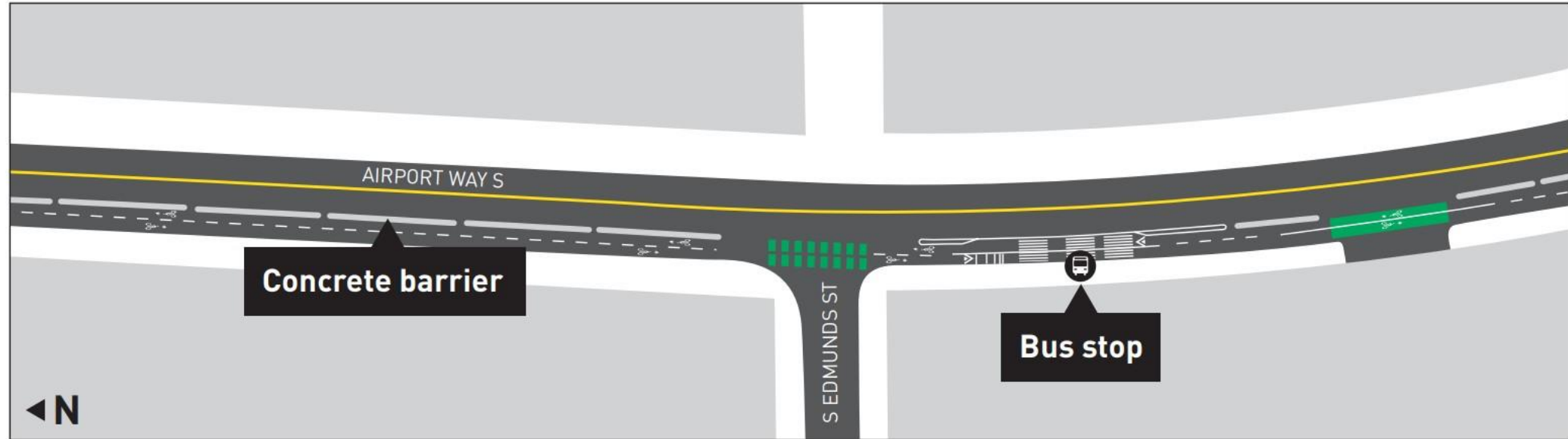
- Two-way protected bike lanes on higher speed roadways or where off-street right of way is available
- One-way protected bike lanes elsewhere
- Shared-use path for short connecting segment

S Lucile St and Airport Way S



- Add two-way protected bike lane to west side of Airport Way S Bridge
- Expand southeast corner
- Add new curb ramps and refresh crosswalks
- Close northwest corner slip lane

S Edmunds St and Airport Way S



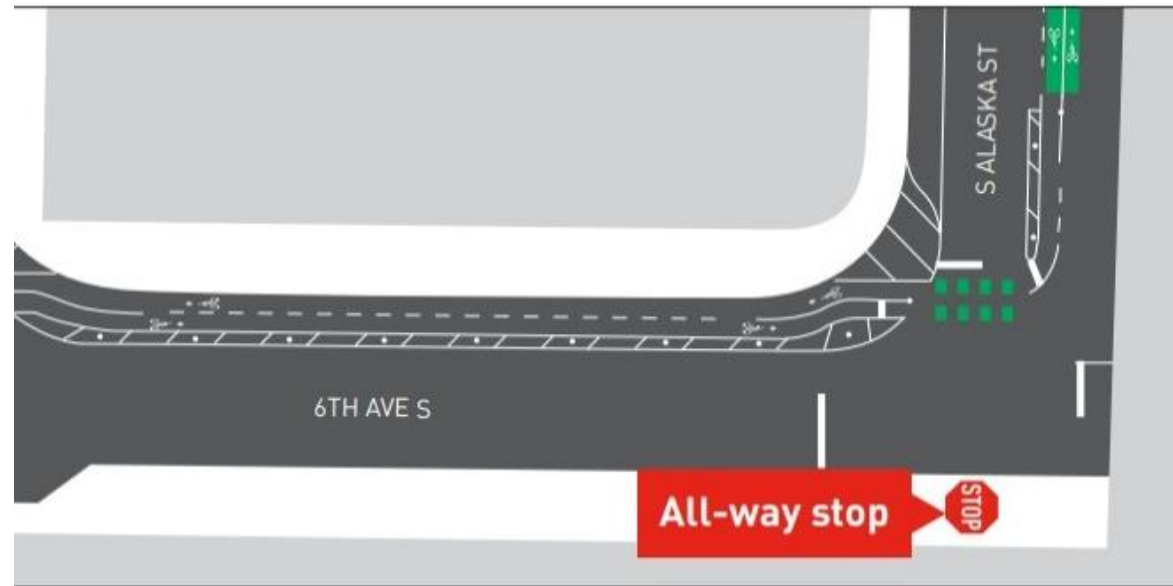
- Add two-way protected bike lane to west side of Airport Way S, continue onto S Alaska St
- Raised bus stop at S Edmunds St

Example bus stop



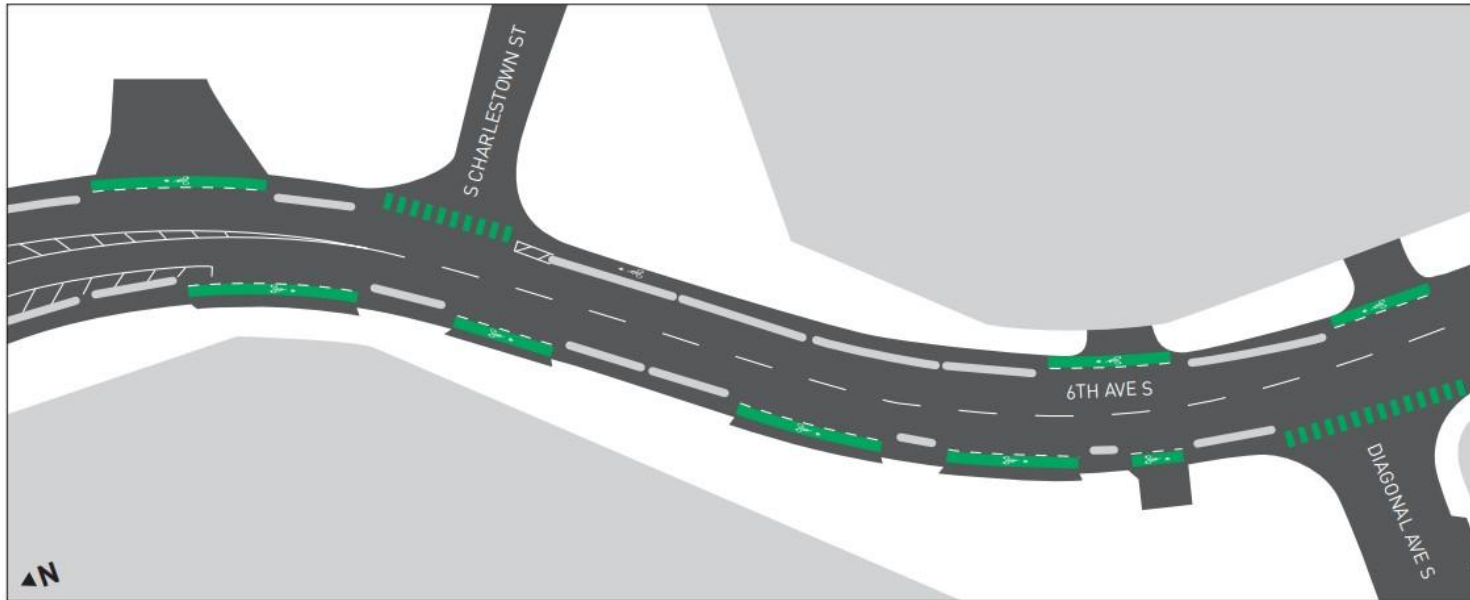
Location: Gilman Ave W
in Interbay, Seattle
Completed Q2 2023

6th Ave S and off-street bike lane



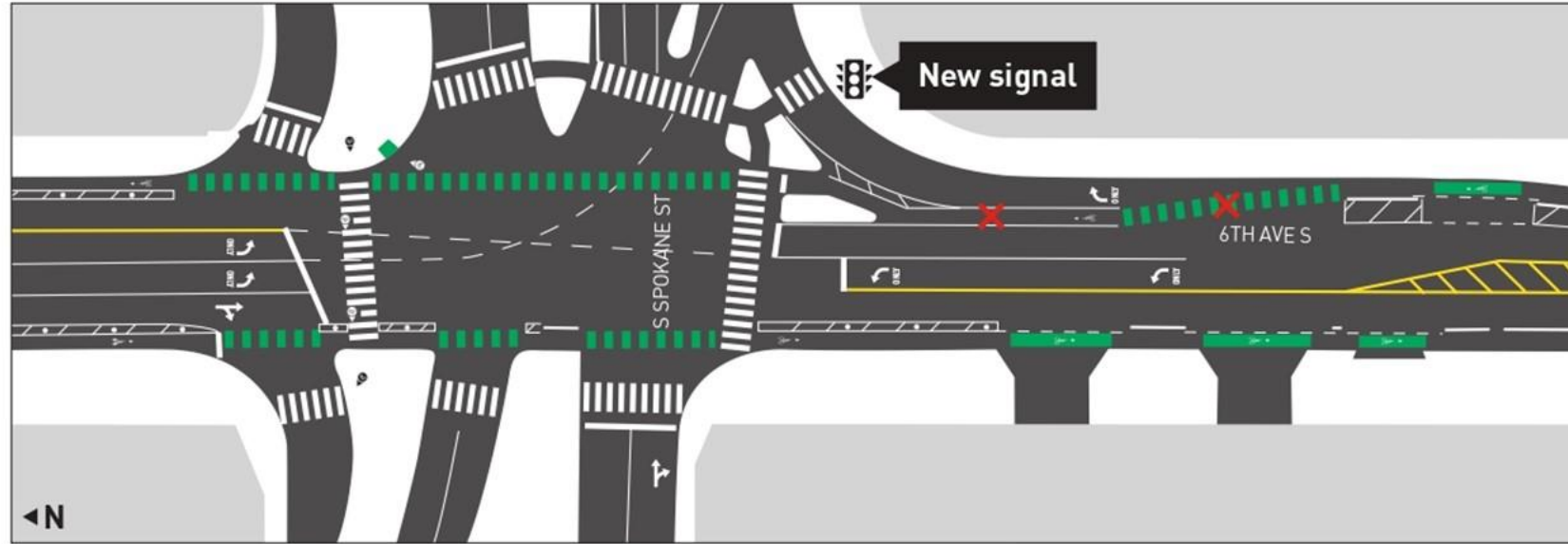
- Transition from S Alaska St to 6th Ave S at new all way stop
- To protect 18 existing trees, we're evaluating moving bike lane from sidewalk to street level similar to adjacent segments
 - This may require removal of additional existing on-street parking on one side of 6th Ave S in order to preserve two-way freight movement

Curved section of 6th Ave S



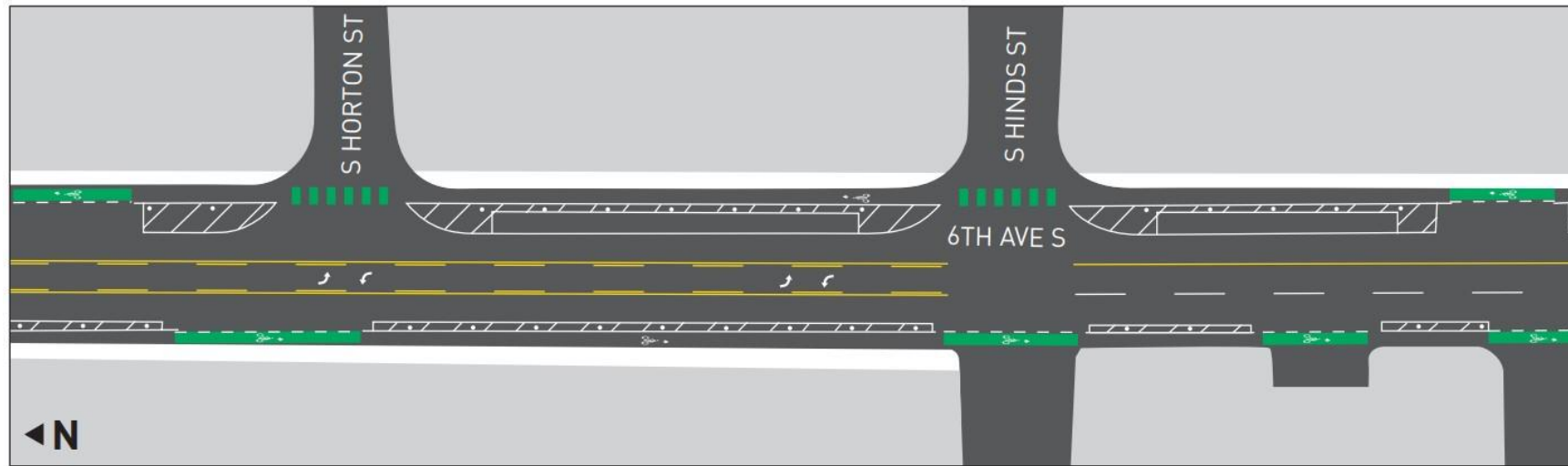
- One way protected bike lanes on both sides of the street (transition at new all way stop at S Nevada St)
- Concrete protection at curve

S Spokane St



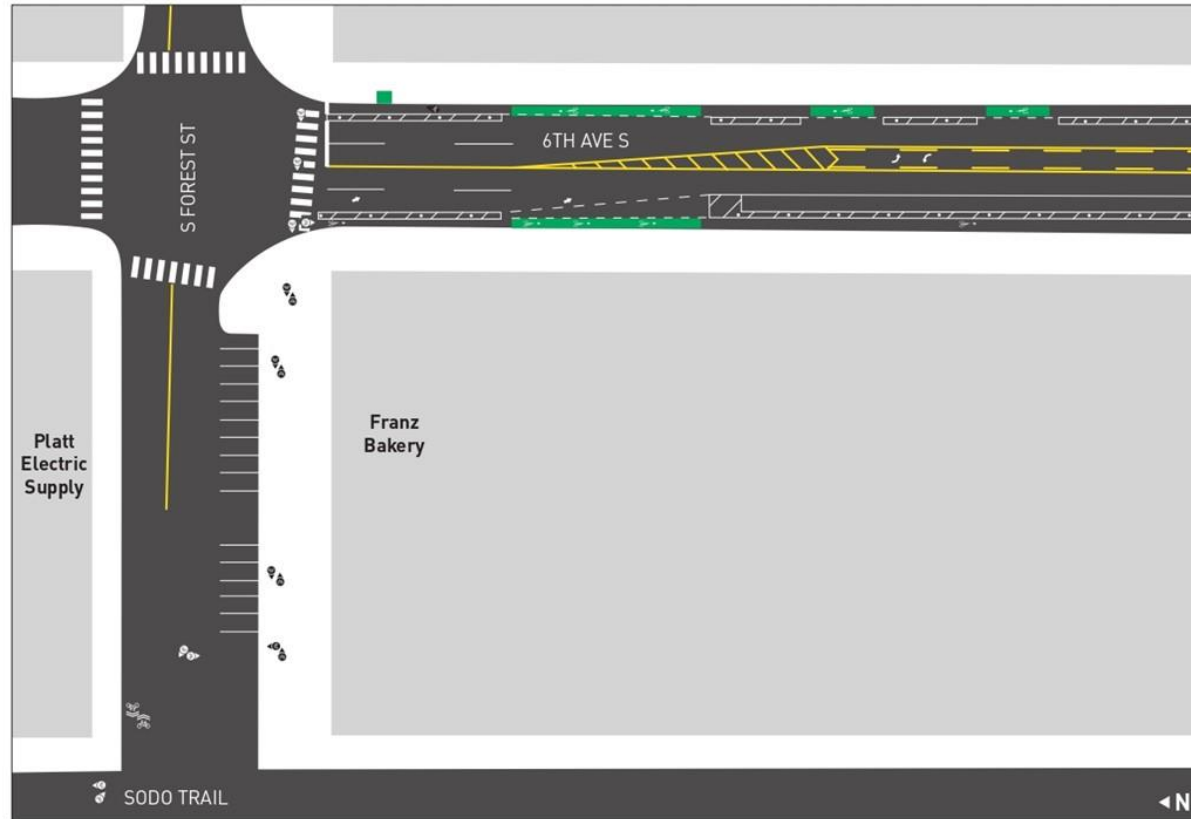
- Continue one-way protected bike lanes
- New bike ramps and wayfinding to help reach S Spokane St sidewalk
- Additional signalization changes since 30%, more changes 60% -> 90%

6th Ave from S Spokane St to S Forest St



- Continue one-way protected bike lanes using interim materials in advance of Sound Transit construction
- Preserve parking on east side of street south of S Horton St and west side north of S Horton St
- Add center turn lane for business access and safety

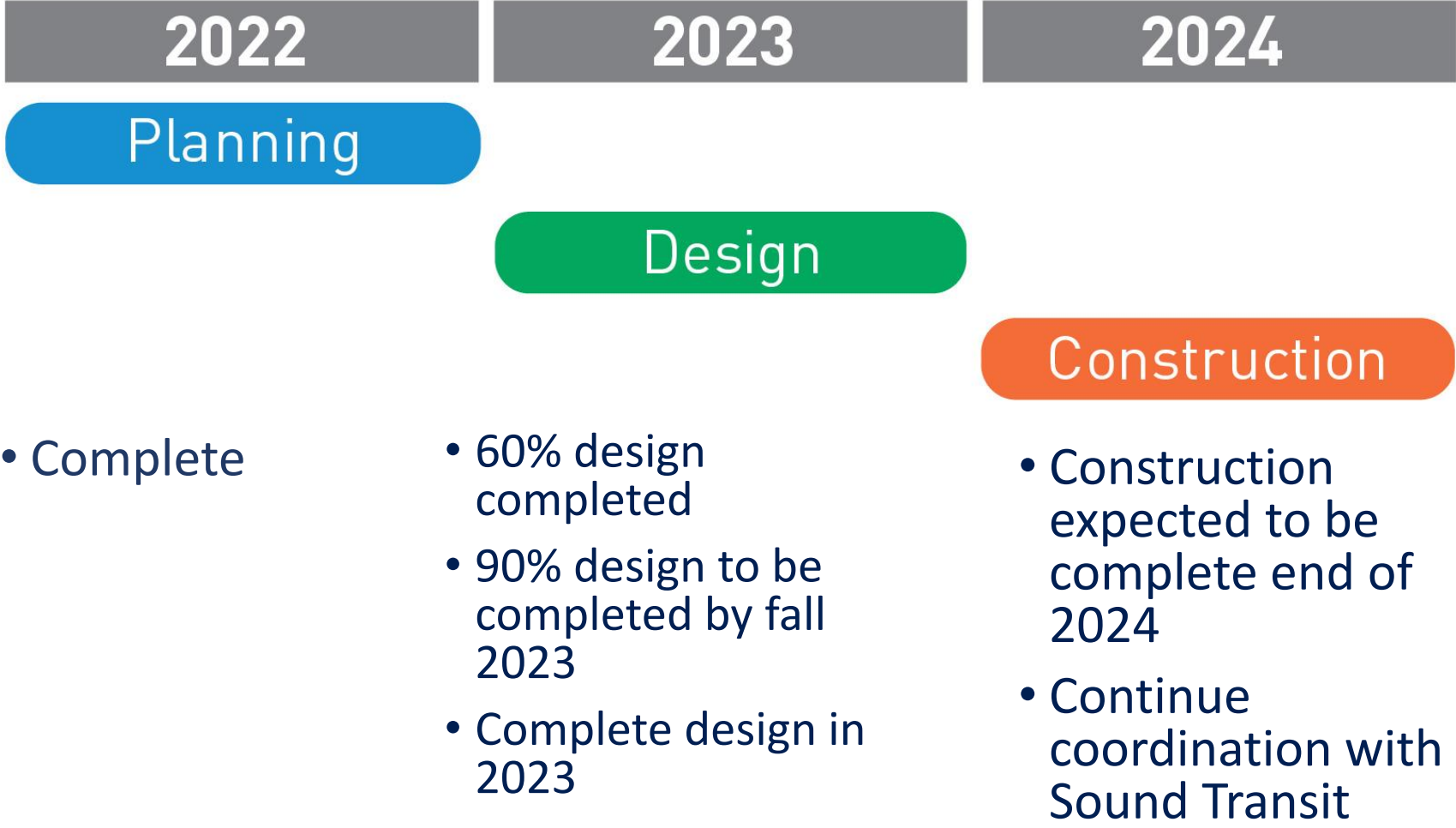
S Forest St



- Connect to SODO Trail at S Forest St
- Short multiuse trail on the south side of S Forest St

Next Steps

Schedule & Next Steps



Schedule subject to change

Coordination and Expansion

- Design, utility relocation and construction coordination with Sound Transit
- SODO Station access coordination
- Northern & southern extensions
- East/West connections as future projects



Interim North Connection

- Upgrade protected bike lanes and paths
- Short new protected bike lanes and trail segments
- Improve wayfinding for the SODO Trail
- Construction by SDOT crews in 2024



South connections

- Gap between the Georgetown to South Park Connection and Georgetown to Downtown
- Prepare for planning study and outreach in 2023 or 2024
- Options include:
 - Airport Way S bike lanes
 - Rail-With-Trail along spur track
 - Alternate route on side streets
 - Hybrids between above



Potential links between the two facilities in central Georgetown

Questions?

Stay in touch:



GeorgetownToDowntownSafety@seattle.gov



206.900.8734



www.seattle.gov/transportation/GeorgetownToDowntownSafety

