

2017 Voter's Guide

District 2

**YOUR VOICE,
YOUR CHOICE!**



**PARKS
& STREETS**

2A. RAINIER BEACH: Lighting Improvements on S Henderson St between MLK Way S & Renton Ave S (FUNDED PROJECT, work will begin in 2018)

Improve pedestrian lighting on S Henderson St to provide better visibility near LINK Light Rail station

SDOT Proposed Solution & Comments:

- SDOT recommends installing 9 LED pedestrian light fixtures and replacing 1 existing wood pole with taller wood pole and luminaire street light.

Cost Breakdown & Partnerships:

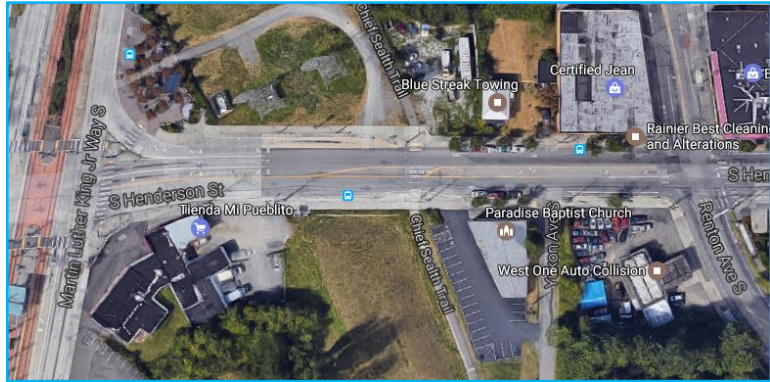
Your Voice, Your Choice Cost: \$90,000

Design Costs: \$15,000

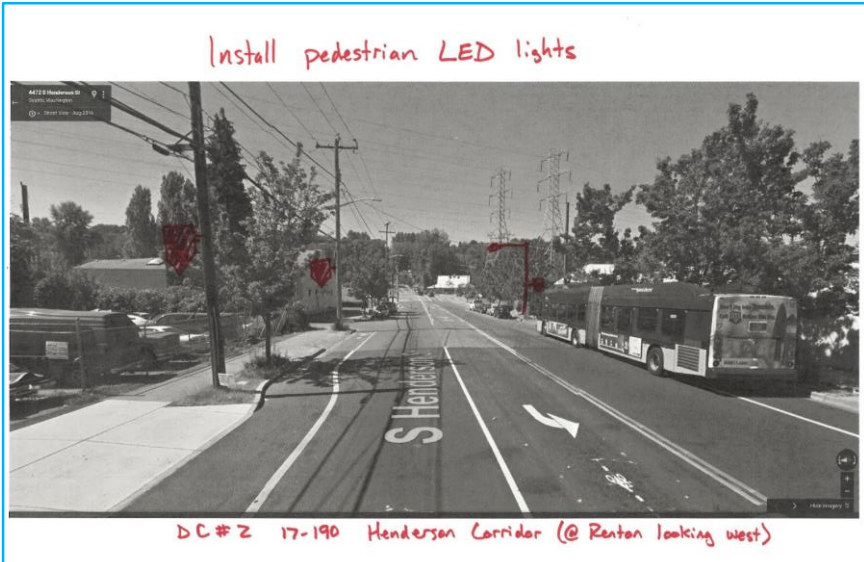
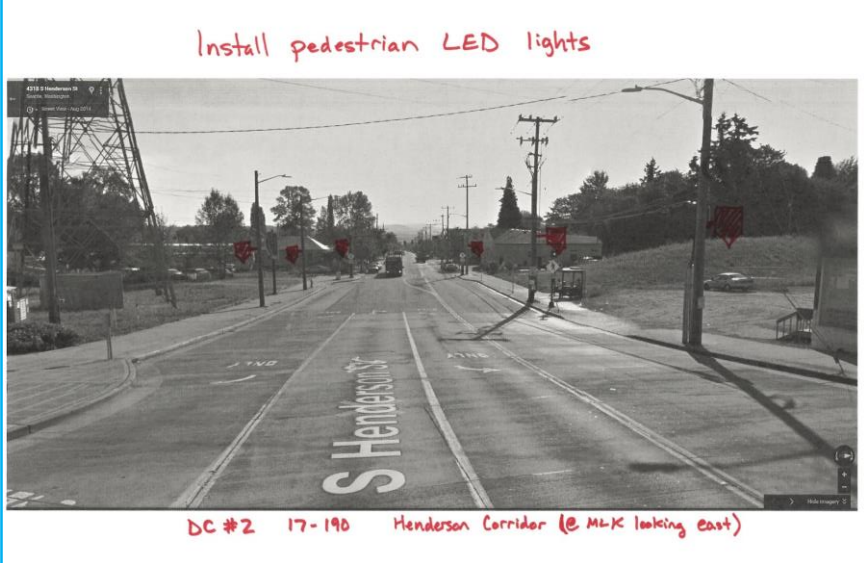
Construction Costs: \$75,000

Partnership Opportunity: King County (KC) Metro will be installing a larger double-sized bus shelter with new solar lighting for the eastbound bus stop on Henderson, east of MLK by the end of 2017. They will be doing this work independent of any VVYC.

Current Status:



Design Images:



2B. RAINIER BEACH: Lighting & Landscape Improvements at Rose St and Rainier Ave S (FUNDED PROJECT, work will begin in 2018)

Improve lighting and landscaping at Rose St Triangle Park to deter chronic dumping

SDOT Proposed Solution & Comments:

- Under the CPTED (crime prevention through environmental design) lens, SDOT proposes the following for the "Rose Street Triangle Park":
 - Installing pedestrian lights;
 - Maintaining the landscape;
 - Adding interim design elements.
- The addition of pedestrian lighting will increase visibility and comfort. Maintaining the existing landscape will ensure that the triangle has good visibility and natural light. Adding interim design elements will help define the space. When all three are combined, these actions can encourage space activation, which can discourage bad behavior.
- Primary asset on this site is large existing street trees. Improvements along the Rainier frontage represent a recent investment of public funds to be considered. The sparse understory plant population provides an opportunity for improvements and pathway through the site is an element with potential to be upgraded /augmented with an artistic treatment coordinated with a plan to add diversity to the understory with a substantial percentage of the space within the triangle available to accommodate this. Uplighting the trees at this site has potential to improve visibility and safety within the site and to bring public attention to the trees as valuable public assets.

Cost Breakdown & Partnerships:

Your Voice, Your Choice Cost: \$90,000

Design Costs: \$12,000

Construction Costs: \$78,000

Partnership Opportunity: None

Current Status:



2C. GEORGETOWN: Pedestrian improvements on Myrtle, near Ellis Ave S

Add low-cost curbing to create walkway for pedestrians along S. Myrtle St, between Ellis Ave and E. Marginal Way.

SDOT Proposed Solution & Comments:

- SDOT recommends adding wheel stops on both sides of S Myrtle St between Ellis Ave S and East Marginal Wy S where appropriate to define the pedestrian walkway and remove the lane line for WB traffic to avoid any confusion about the parking situation.

Cost Breakdown & Partnerships:

Your Voice, Your Choice Cost: \$6,000
 Design Costs: N/A
 Construction Costs: \$6,000

Partnership Opportunity: None

Current Status:

Design Image:



2D. GEORGETOWN: Walkway Improvements on 4th Ave S, between E Marginal Way & Michigan St

Design a sidewalk on 4th Ave S to improve walkway for pedestrians accessing food bank and businesses near South Seattle College

SDOT Proposed Solution & Comments:

- 4th Ave S between E Marginal Way & S Michigan St warrants a traditional sidewalk on the east side of the street to clarify driveway access points and protect pedestrians from turning vehicles.
- Sufficient right of way exists to incorporate a planting strip into the design of the sidewalk.
- As this type of improvement is outside the scope of a YVYC project, SDOT recommends using YVYC funds to develop a 60% design for the sidewalk. Pedestrian Master Plan implementation funds could be used for the remaining design and construction.
- If partnered with YVYC, this block is likely to prioritize in the 2018-2022 Pedestrian Master Plan Implementation Plan.

Cost Breakdown & Partnerships:

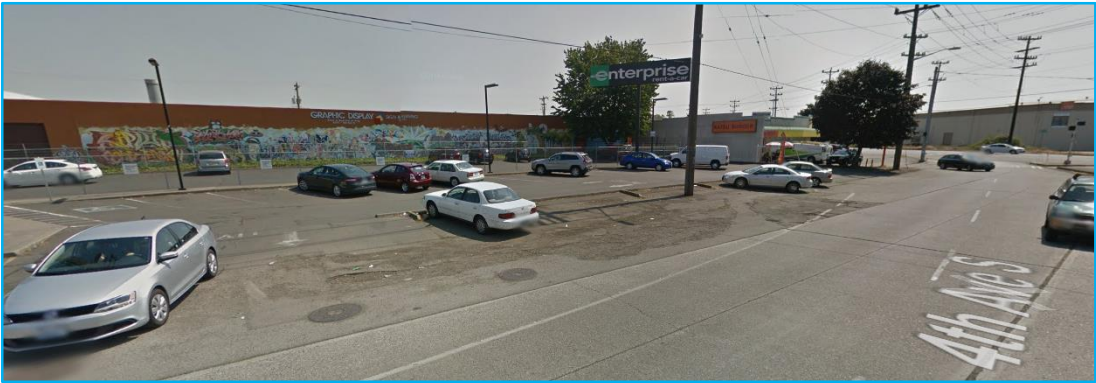
Your Voice, Your Choice Cost: \$75,600

Design Costs: \$75,600

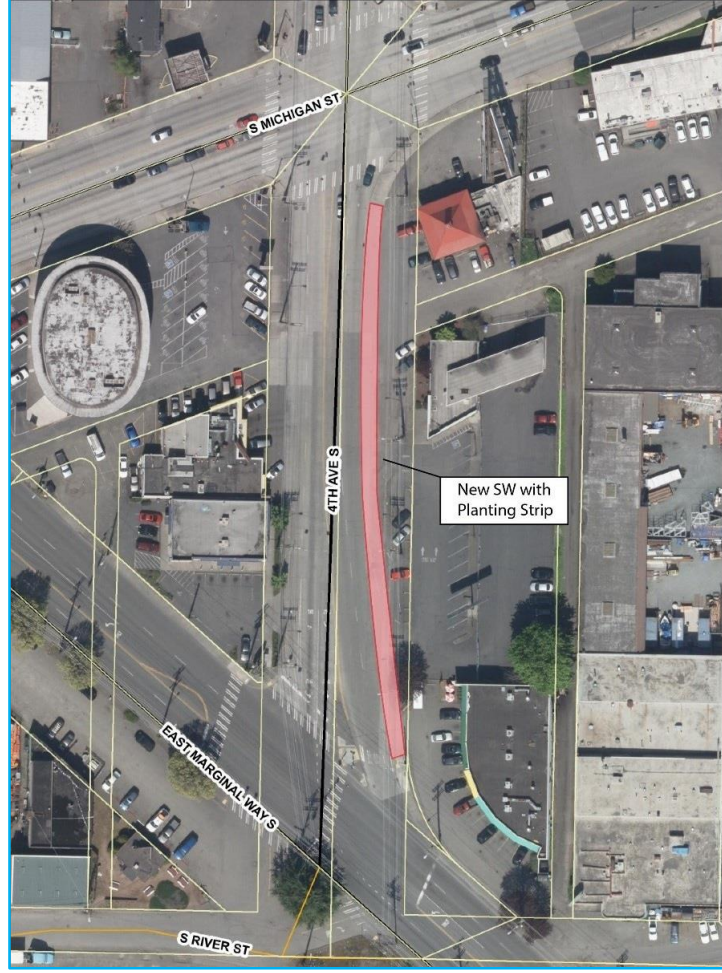
Construction Costs: N/A

Partnership Opportunity: Potential funding for remaining design & construction costs through 2018-2022 Pedestrian Master Plan Implementation Plan.

Current Status:



Design Image:



2E. HILLMAN CITY: Sidewalk improvements on 39th Ave St near S Juneau St (FUNDED PROJECT, work will begin in 2018)

Improve sidewalk on west side of 39th Ave S, near Aki Kurose, Brighton Playfield and the Cham Community Center

SDOT Proposed Solution & Comments:

- The proposed improvements include:
 - Repairing sidewalk in poor condition on the west side of 39th Ave S near S Juneau St
 - Adding landings at the southwest and southeast corners of 39th Ave S and S Juneau St
 - Repairing various shoulder areas on the west side of 39th Ave S between S Juneau St and S Graham St.
- Benefits include:
 - Increased accessibility and safety for pedestrians
 - Improved planting strip areas
- This was submitted and reviewed as a Neighborhood Street Fund project in 2016. See project specs here:
<http://www.seattle.gov/transportation/docs/nsf/2016040.pdf>

Cost Breakdown & Partnerships:

Your Voice, Your Choice Cost: \$90,000
Design Costs: \$9,000
Construction Costs: \$81,000

Partnership Opportunity: None

Current Status:



Design Image:



2F. HILLMAN CITY: Accessibility Improvements at 39th Ave S & S Findlay St (FUNDED PROJECT, work will begin in 2018)

Build 4 curb ramps at the intersection of 39th Ave S & S Findlay St to improve accessibility near Aki Kurose Middle School & Brighton Playfield

SDOT Proposed Solution & Comments:

- Recommendation is to install curb ramps at all four corners of 39th Ave S and S Findlay St.
- Based on a preliminary assessment, the NPSF Budget is adequate for one intersection only. The intersections of 39th Ave S and S Lucile St and S Brandon St have ramps or sidewalk on the east legs, therefore the east leg of 39th Ave S and S Findlay St should be the priority if funding concerns arise during design/construction.

Cost Breakdown & Partnerships:

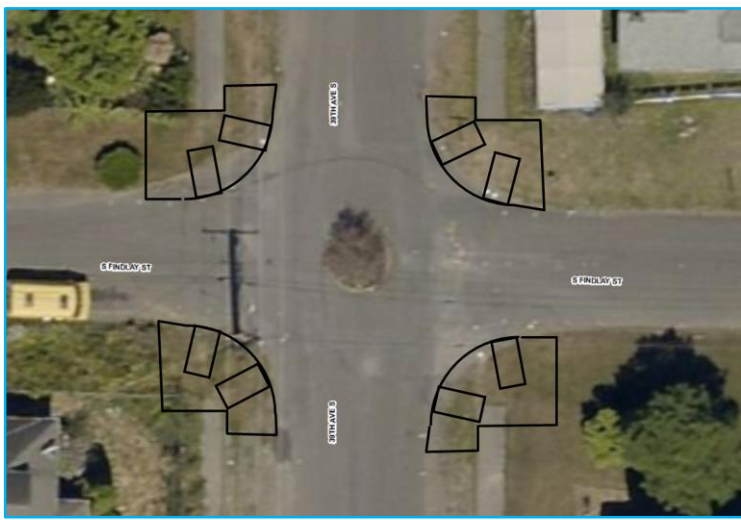
Your Voice, Your Choice Cost: \$90,000
Design Costs: \$8,800
Construction Costs: \$81,000

Partnership Opportunity: Possible partnership with ADA ramp program, Safe Routes to Schools, or Pedestrian Master Plan

Current Status:



Design Image:



2G. BEACON HILL: Crossing Improvements near 15th Ave S & S Angeline St

Connect the Chief Sealth Trail with the Beacon Hill Greenway by adding a marked crosswalk across 15th Ave S at S Angeline St, speed humps & signs to mark the route

SDOT Proposed Solution & Comments:

- Complete the missing greenway segment between the Chief Sealth Trail and the Beacon Hill Greenway. This will include wayfinding, speed humps or cushions and a crossing of 15th Ave S and S Angeline St.

Cost Breakdown & Partnerships:

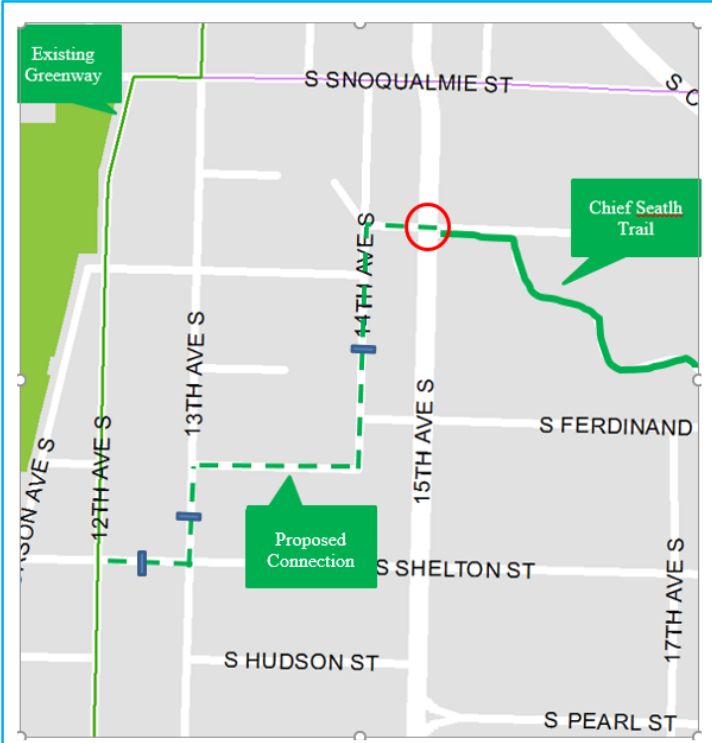
Your Voice, Your Choice Cost: \$90,000
 Design Costs: \$6,900
 Construction Costs: \$83,1000

Partnership Opportunity: Pedestrian Master Plan (PMP)

Current Status:



Design Image:



- Speed Hump or cushion*
- Intersection improvement including crosswalk, curb ramp on SE side and an RRFB

*Exact locations to be determined in final design



2H. GENESEE: Crossing Improvements at Rainier Ave S & S Charlestown St

Increase crossing time and repaint crosswalks on Rainier Ave S & S Charlestown St to make crossing safer near bus stops, senior housing & businesses

SDOT Proposed Solution & Comments:

- SDOT looked a variety of solutions to increasing the safety of people crossing the intersection and are recommending increasing the walk time as well as repainting the crosswalks. In the repainting of the crosswalks SDOT is proposing fanning out the crosswalks on the west side of the intersection to give more space for pedestrians

Cost Breakdown & Partnerships:

Your Voice, Your Choice Cost: \$20,900
 Design Costs: \$6,600
 Construction Costs: \$14,300
Partnership Opportunity: None

Current Status:



2I. BEACON HILL: Accessibility Improvements at 15th Ave S & Beacon Ave S

Add a verbal crossing notification at 15th Ave S & Beacon Ave S to make crossing safer for people with visual impairments

SDOT Proposed Solution & Comments:

- SDOT recommends installing roughly 6 poles/posts and 6 new accessible pedestrian signal (APS) push buttons to be American Disability Act (ADA) compliant.
- It will require some trenching and sidewalk restoration for new poles.

Cost Breakdown & Partnerships:

Your Voice, Your Choice Cost: \$40,000
 Design Costs: \$5,000
 Construction Costs: \$35,000
Partnership Opportunity: None

Current Status:

Design Image:

