

**Community Advisory Committee (CAC) – Orientation**

# **Seattle Pacific University MIMP**

August 4, 2020



**Perkins&Will**

Community Advisory Committee (CAC) – Orientation

# SPU History and Enrollment



Perkins&Will

## HISTORY OF SPU



### Early Years: 1891–1919

- Seattle Seminary founded in 1891 by Free Methodist pioneers to train missionaries for overseas service. (34 students including primary, intermediate grades) Alexander Hall
- 1905 – Peterson built
- 1910 – added college level courses
- 1913 – changed name to Seattle Seminary and College
- 1915 - changed name again to Seattle Pacific College, five students in first graduating class in 1915.

### Growing Enrollment and Academic Stature: 1920–44

- 1920s - enrollment climbed from 40 to more than 400.
- 1945 - World War II ended and enrollment grew from 400 students to 1,400

## HISTORY OF SPU



### The College Expands: 1945–69

- 1945 -1959, built five new buildings: Royal Brougham Pavilion, McKinley Auditorium, Watson Hall, Moyer Hall, and Marston Hall
- 1955 – purchased Camp Casey - 155 acres on Whidbey Island. (seaside campus for field study and outdoor education.)
- 1960s - 15 new buildings constructed: some of them - Demaray Hall, Crawford Music Building, Beegle Hall, Student Union Building, Weter Memorial Library, and Hill and Ashton residence halls. Remodeled 10 existing buildings, including improvements to Camp Casey, and acquired more than 70 real estate properties.

## HISTORY OF SPU



### The Emergence of a University: 1970–90

- 1977 – changed name to Seattle Pacific University.
- 1982 - McKenna Hall (School of Business) was constructed

### Engaging the Culture, Changing the World: 1991–Now

- 1994 – Ames Library
- 2003 – Eaton Hall science building, OMH remodel
- Gwinn Commons remodel/construction; Emerson Hall
- 2013 – Arnett Hall built

# ENROLLMENT

Last Updated: 10/30/2019

<b>Fall Census:</b>	<b>2005</b>	<b>2010</b>	<b>2015</b>	<b>2016</b>	<b>2017</b>	<b>2018</b>	<b>2019</b>
<b>Headcount</b>	<b>3,873</b>	<b>4,117</b>	<b>4,175</b>	<b>4,061</b>	<b>3,813</b>	<b>3,688</b>	<b>3,529</b>
<i>% Change</i>	<i>2.5%</i>	<i>2.9%</i>	<i>-1.0%</i>	<i>-2.7%</i>	<i>-6.1%</i>	<i>-3.3%</i>	<i>-4.3%</i>
Undergraduate	2,978	3,129	3,187	3,079	2,900	2,861	2,709
Non-Matriculated Undergraduate	44	10	15	16	11	15	8
Post-Baccalaureate	64	25	26	26	32	24	21
Masters	583	762	741	747	672	580	574
Doctoral	162	157	180	173	179	198	204
Non-Matriculated Graduate	42	34	26	20	19	10	13



Perkins&Will

**Community Advisory Committee (CAC) – Orientation**

# **Campus Planning Principles**



**Perkins&Will**

# LANDMARKS

identifiable reference points



Perkins&Will

(L) UNIVERSITY OF WASHINGTON

(R) UNIVERSITY OF WISCONSIN



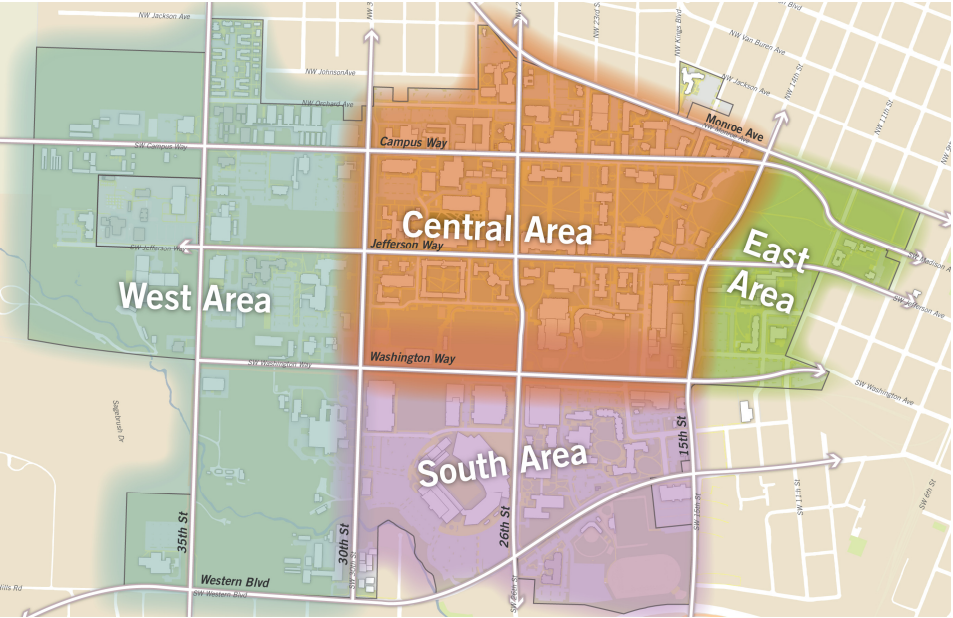
# EDGES

walls, buildings, shorelines



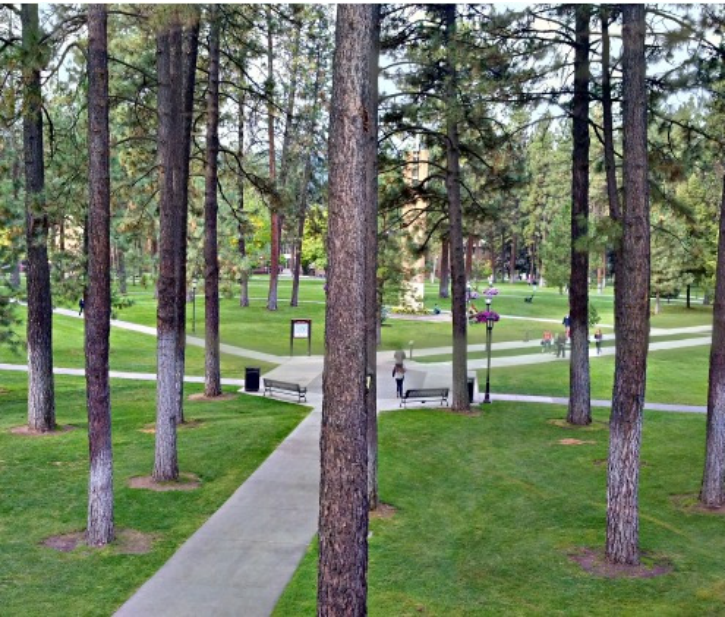
# DISTRICTS

sections of campus



# NODES

focal points, intersections



Perkins&Will

(L) WHITWORTH UNIVERSITY

(R) GENEVA COLLEGE

# PATHS

streets, sidewalks, trails



# VARYING SCALES

private/semi-private/semi-public/public



Perkins&Will

(L) OREGON STATE UNIVERSITY /  
NORTH CAROLINA STATE  
UNIVERSITY / UNIVERSITY OF NEW  
HAMPSHIRE

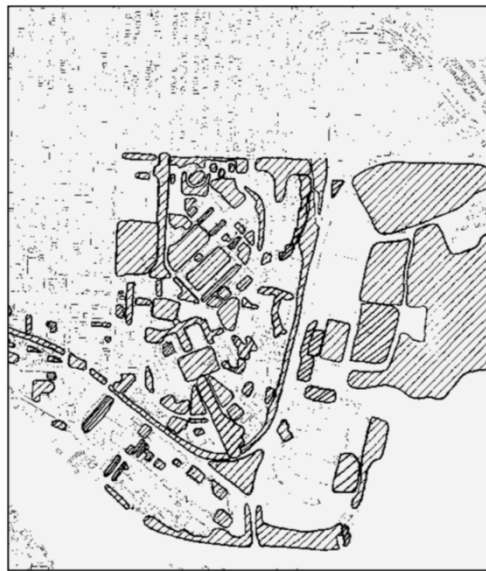
(R) UNIVERSITY OF VIRGINIA

# UNIVERSITY OF WASHINGTON

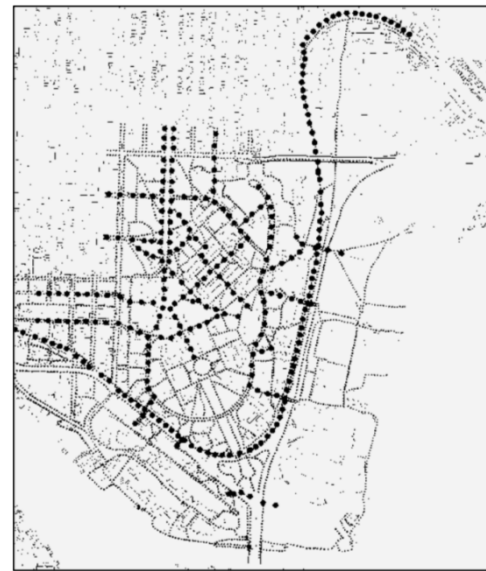
open space, circulation, development



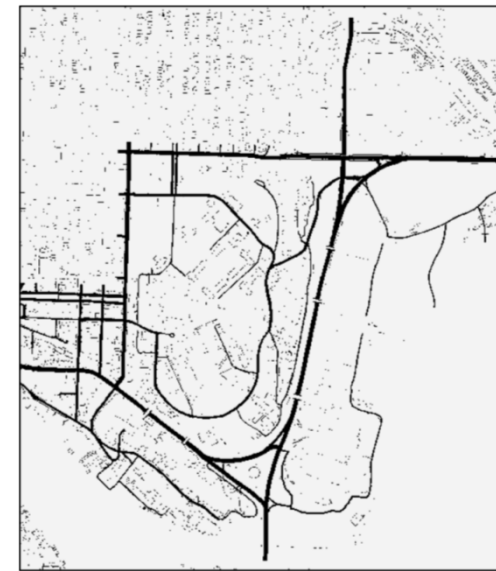
BUILT FORM



OPEN SPACE



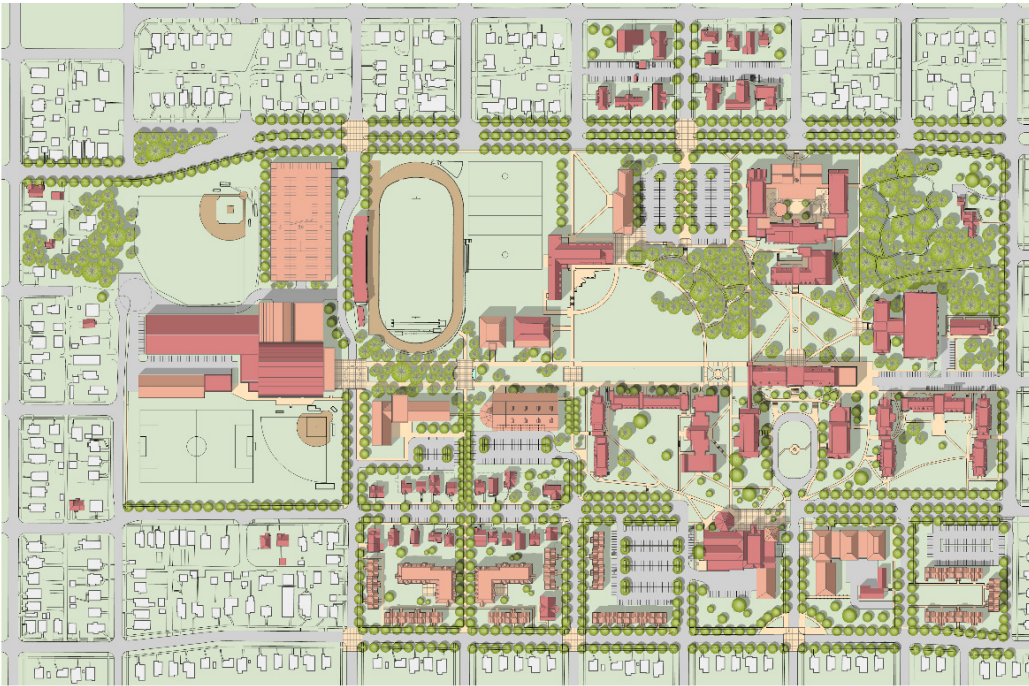
CIRCULATION  
PEDESTRIAN



CIRCULATION  
VEHICULAR

# UNIVERSITY OF PUGET SOUND

institution vision



Perkins&Will

# UNIVERSITY OF WASHINGTON, TACOMA

institution identity

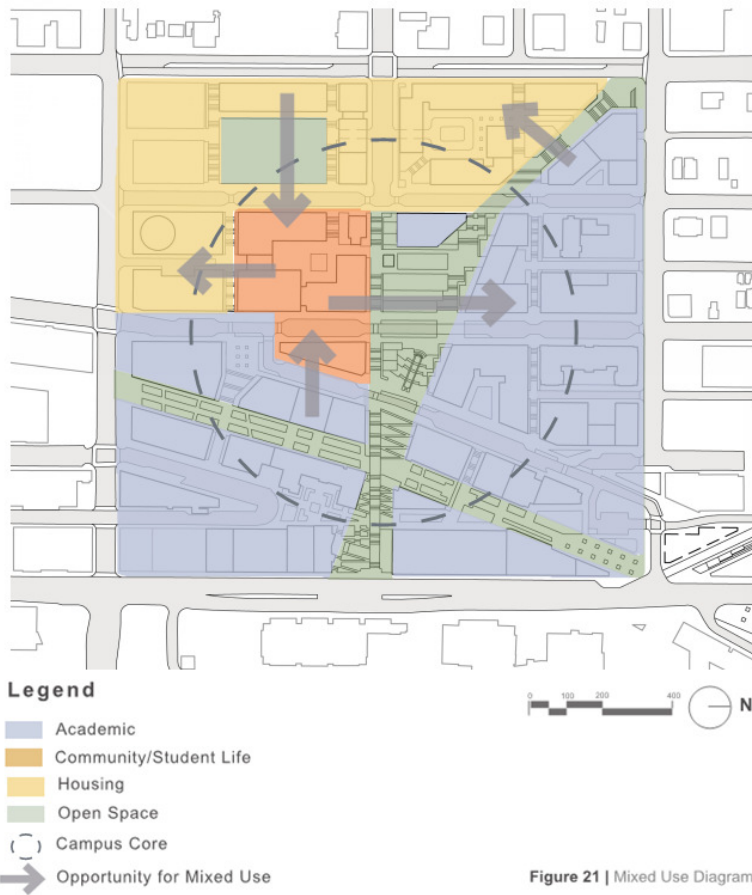
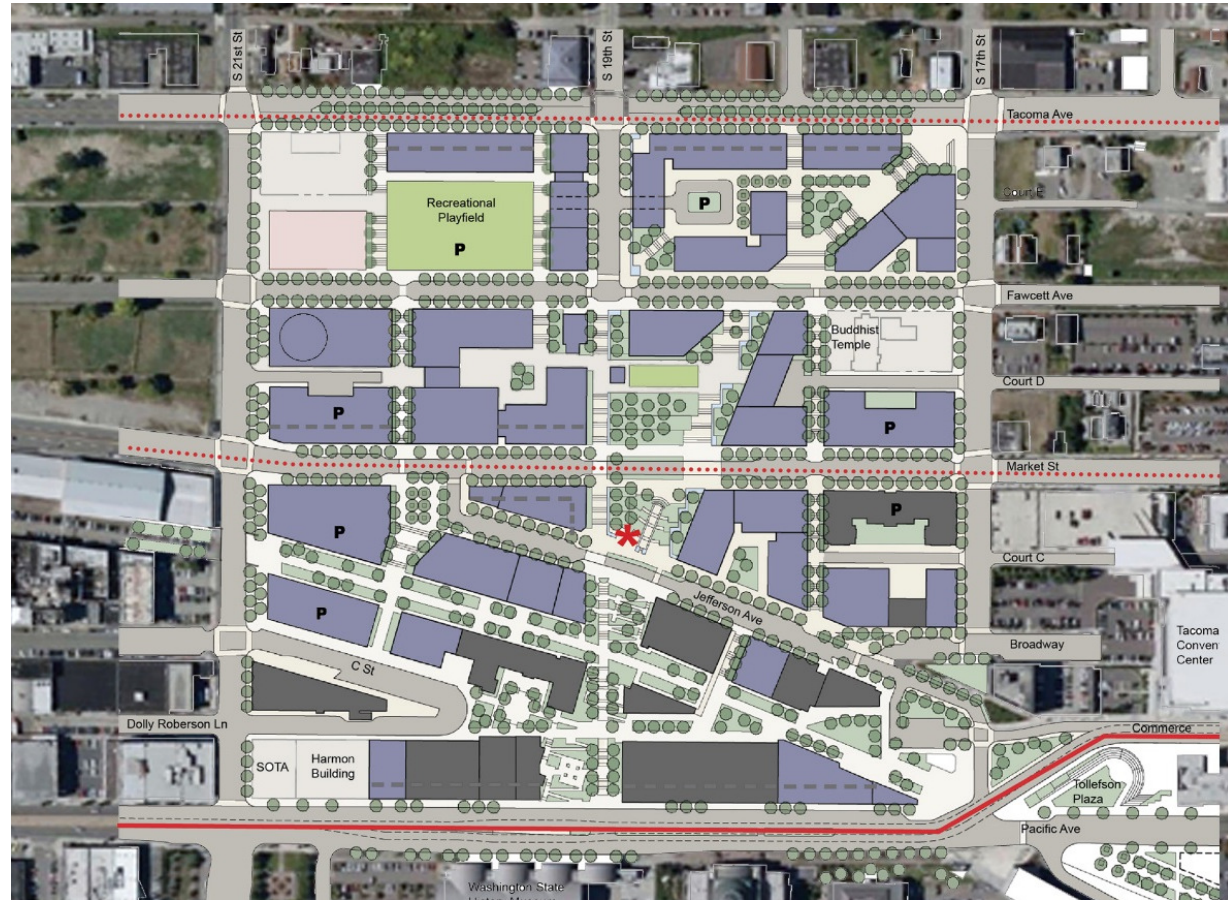


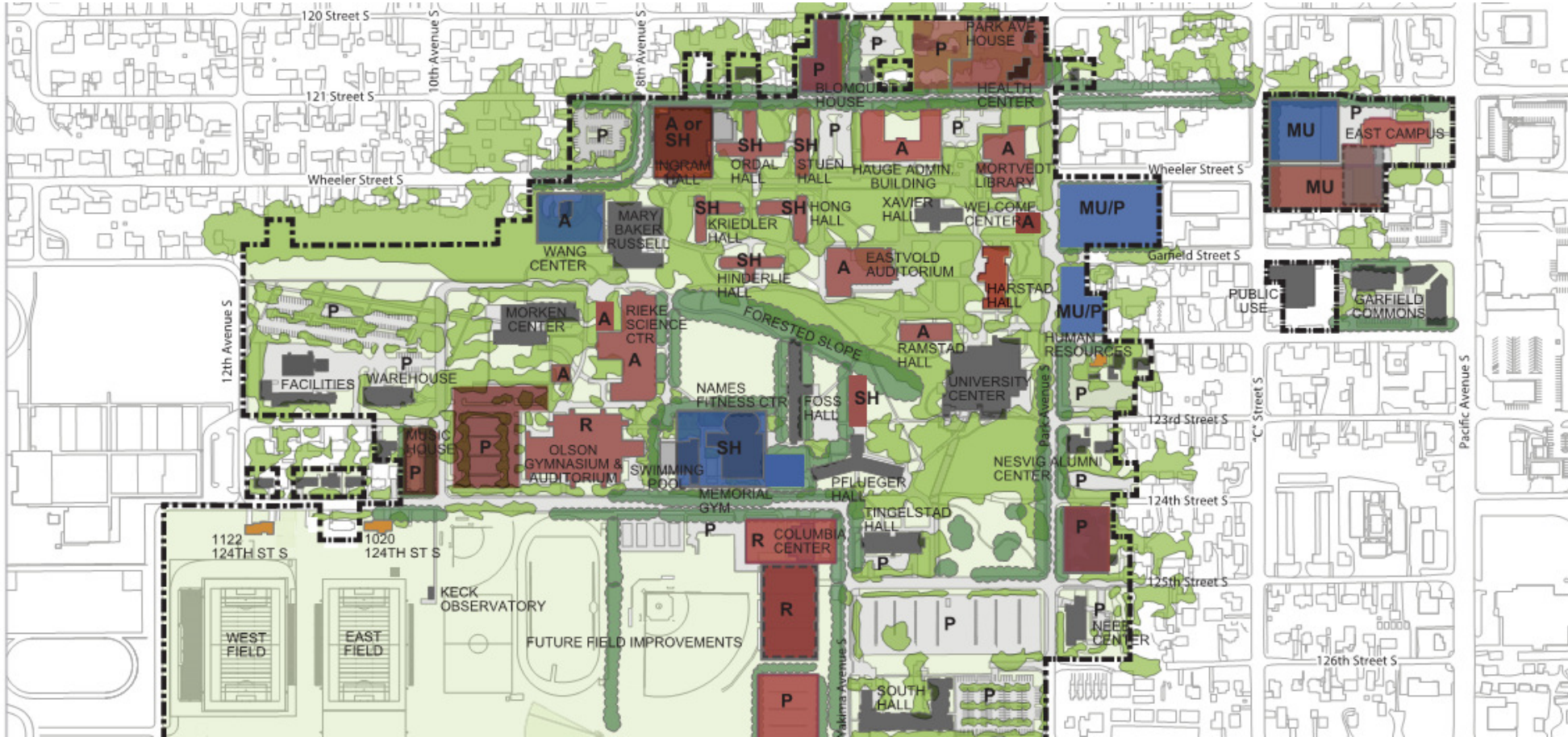
Figure 21 | Mixed Use Diagram





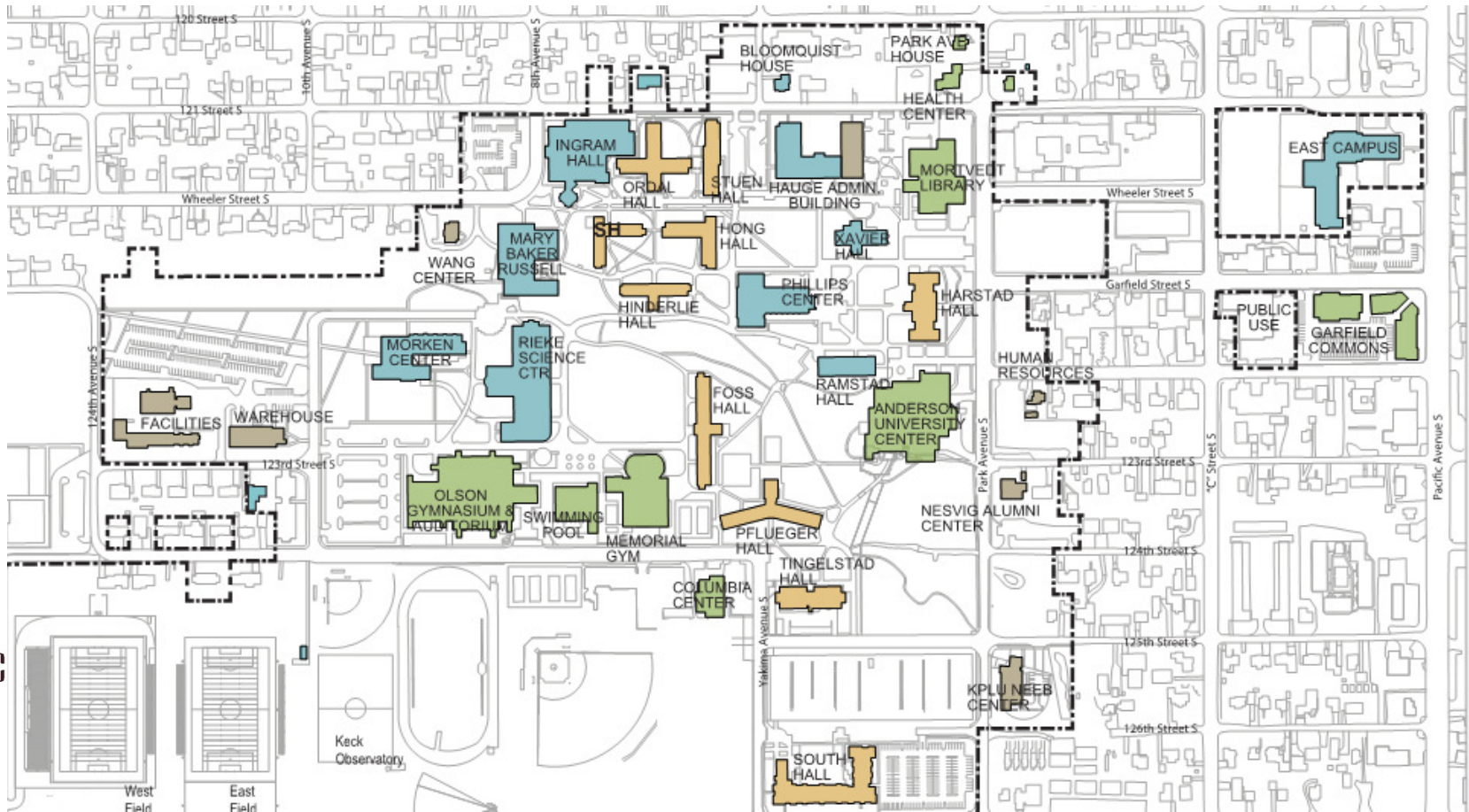
# PACIFIC LUTHERAN UNIVERSITY

institution values



# PACIFIC LUTHERAN UNIVERSITY

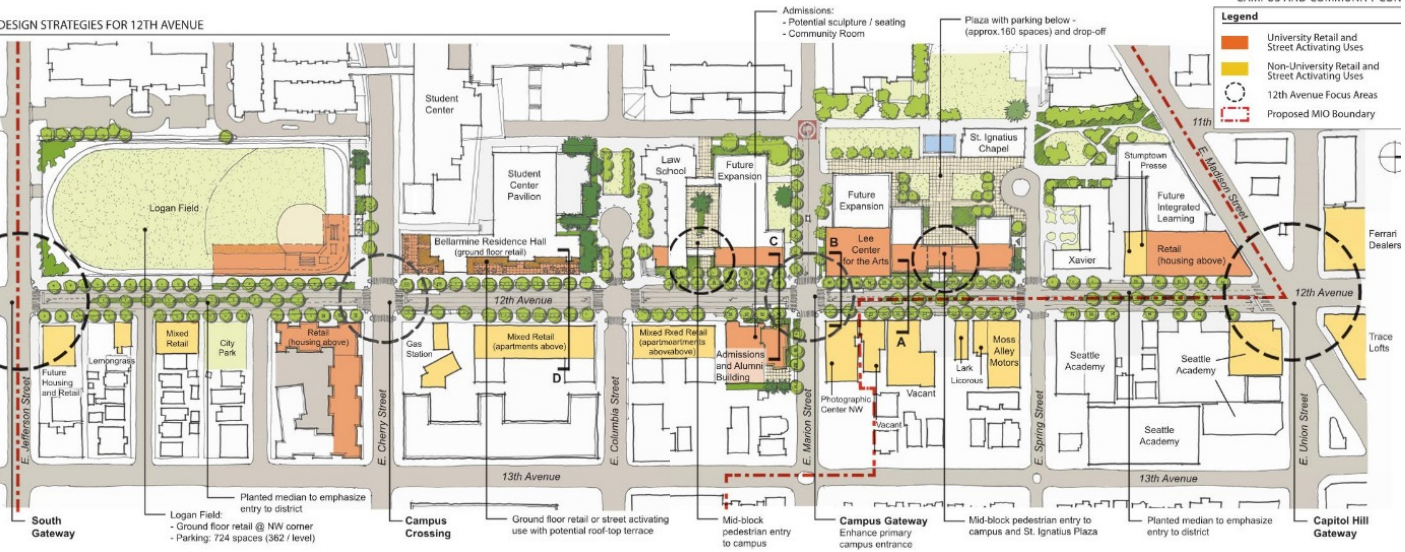
institution values



# SEATTLE UNIVERSITY

## Community connections

URBAN DESIGN STRATEGIES FOR 12TH AVENUE



Perkins&Will

**Community Advisory Committee (CAC) – Orientation**

# **University's Planning Thoughts**



**Perkins&Will**

# UNIVERSITY'S CAMPUS PLANNING THOUGHTS

## THREE LEVELS OF CULTURE

- ARTIFACTS, VALUES AND ASSUMPTIONS

## CAMPUS PLANNING AS "PLACEMAKING"

GRIFFITH:

- A "SPECIAL PLACE APART" WITH A VISIBLE COHERENCE THAT FACILITATES CAMPUS FUNCTIONS.

## CAMPUS PLANNING AS "PLACEMAKING"

KENNEY, DUMONT AND KENNEY: AREAS THAT INFLUENCE SENSE OF PLACE:

- A SYMBOL OF INSTITUTIONAL IDENTITY, VISION AND VALUES.
- A SETTING THAT CREATES MEMORIES, SENSE OF BELONGING, FEELING OF COMMUNITY.
- COLLEGE TRADITIONS
- EVERYDAY EXPERIENCE



Perkins&Will

**Community Advisory Committee (CAC) – Orientation**

# **Summary of Space Issues**



**Perkins&Will**

## Needs Assessment

# SUMMARY OF SPACE ISSUES - HIGHLIGHTS

### OVERALL

- MAJOR DEFICIENCIES IN COMPARISON TO PEERS
  - CLASSROOMS
  - ARTS AND HUMANITIES
  - STUDENT SERVICES
  - ATHLETICS AND RECREATION
  - OVERALL UNASSIGNED SPACE

### ARTS & SCIENCES

- MORE PERFORMANCE/GALLERY SPACE
- BUILDINGS UNDERSIZED/CRAMPED
- FACILITIES DO NOT SUPPORT PLANNED GROWTH

### EDUCATION

- DESIGN CLASSROOMS FOR ALL AGE GROUPS
- PROVIDE AMENITIES FOR GRADS, MOTHERS, COMMUTERS, & OTHER NON-TRADITIONALS

### BUSINESS, GOVERNMENT, ECONOMICS

- MORE OFFICES & COLLABORATION SPACES
- BUILDING FEELS LIKE “HIGH SCHOOL”



## Needs Assessment

# SUMMARY OF SPACE ISSUES - HIGHLIGHTS

### COMPUTER & INFORMATION SYSTEMS

- GROUP SPLIT BETWEEN 2 SPACES
- INADEQUATE BACKUP SYSTEMS
- PBX LOCATION & SECURITY

### HEALTH & HUMAN PERFORMANCE

- INADEQUATE LAB & TRAINING SPACES
- RESOURCE CONFLICTS WITH ATHLETICS

### PSYCHOLOGY, FAMILY, & COMMUNITY

- INADEQUATE COMMUNITY OUTREACH CLINIC
- MORE RESEARCH SPACE
- NEED ROOM FOR GROWTH

### STUDENT ACADEMIC SERVICES

- TEAM DIVIDED BETWEEN SPACES
- PRIVACY FOR COUNSELING
- ACCESSIBILITY

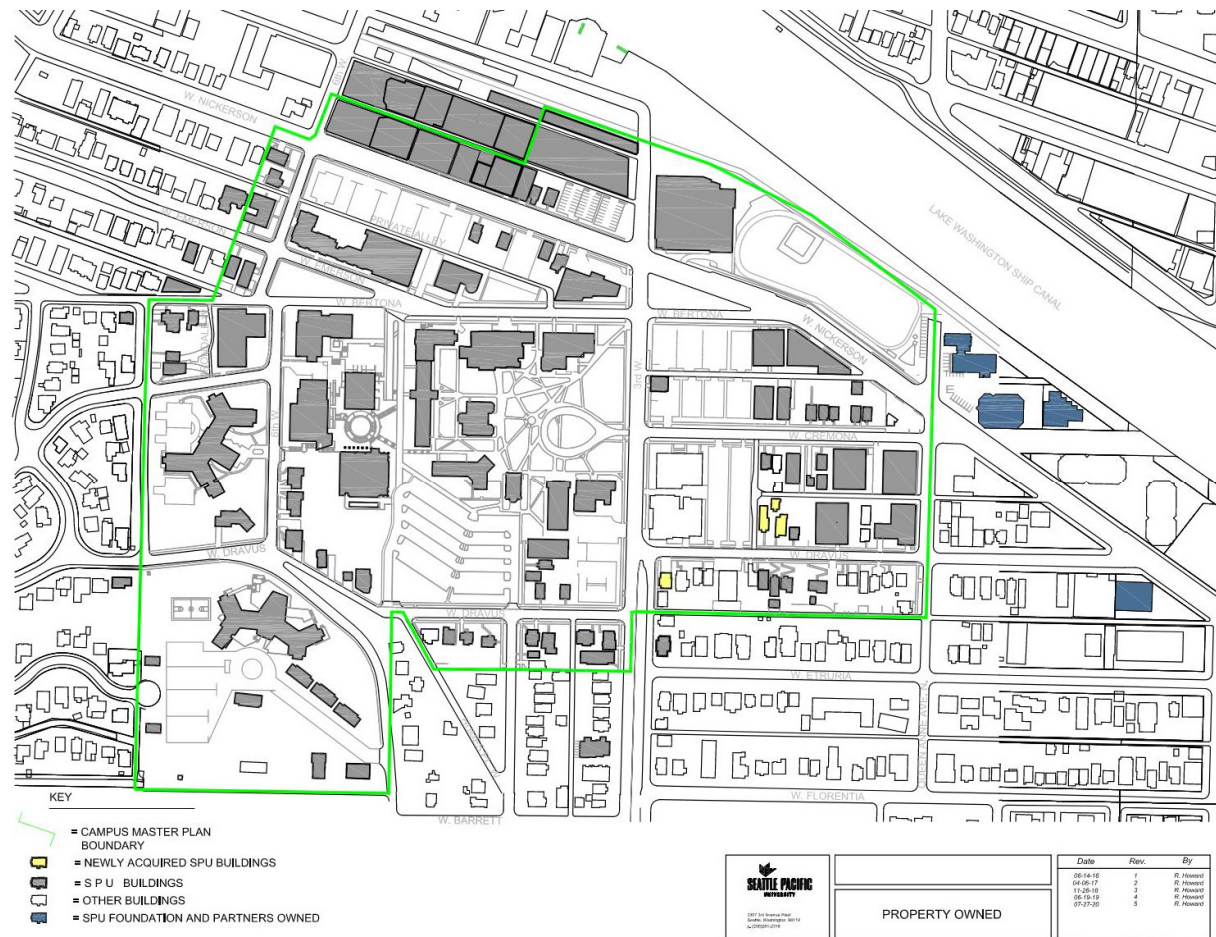
### SCHOLARSHIP & FACULTY DEVELOPMENT

- CLASSROOMS TOO SMALL
- MORE ACTIVE-LEARNING SPACES
- GOOD CLASSROOMS IN CAMPUS "CORE"





# SPU PROPERTY OWNERSHIP



## NEXT STEPS

