

# Street View of 3835 S. Edmunds





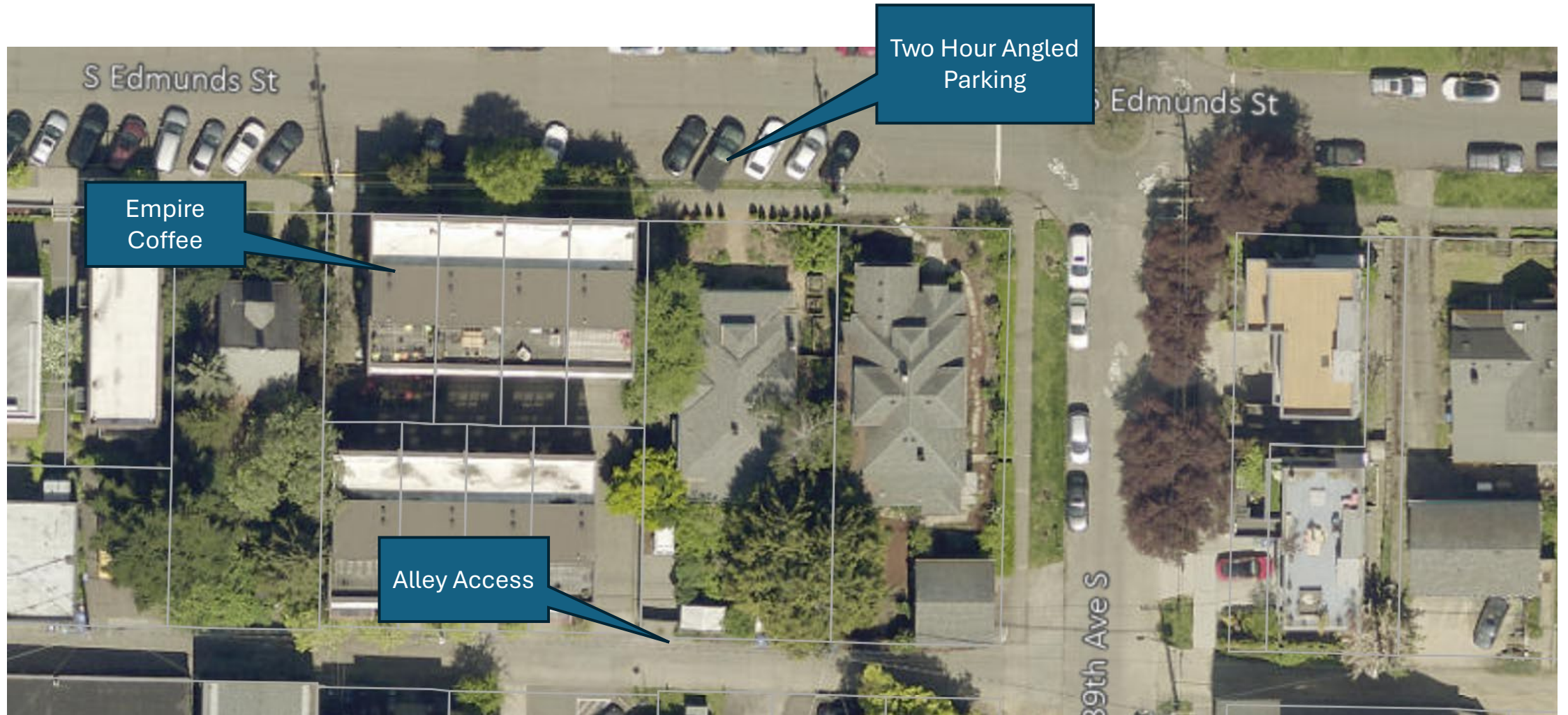
---

# Columbia City Historic District Context





# Local Context



# Goals of Design

- Discourage trespassing individuals and off-leash dogs
- Design a safe area out front for our dog and young family members
- Remove trees and shrubs planted without district authorization, and that may interfere with water and sewer lines
- Appropriately grade yard around house to alleviate water intrusion into basement
- Provide a private outdoor living space that encourages neighborhood interaction
- Improve overall landscape aesthetics in a way that is complementary to the historic home

# Description of Project Components

- A low, neighbor-friendly fence discourages trespass and encloses the private areas without imposing on the public realm
- New plant palette ensures mature species do not interfere with view of the contributing home
- Grading appropriately slopes earth gently away from home
- Hardscaping provide visual interest and outdoor living areas
- Colors and materials complement aspects of the home's design
- Overall project design maximizes access to sunlight on the parcel



# Photographs of Features to be Altered



Existing Sapling  
Magnolia Tree to be  
removed

Existing Weeds to be  
removed

Existing Little Free  
Library (off-site, to  
remain)



# Photographs of Features to be Altered



Existing Sapling  
Cherry Tree to be  
removed

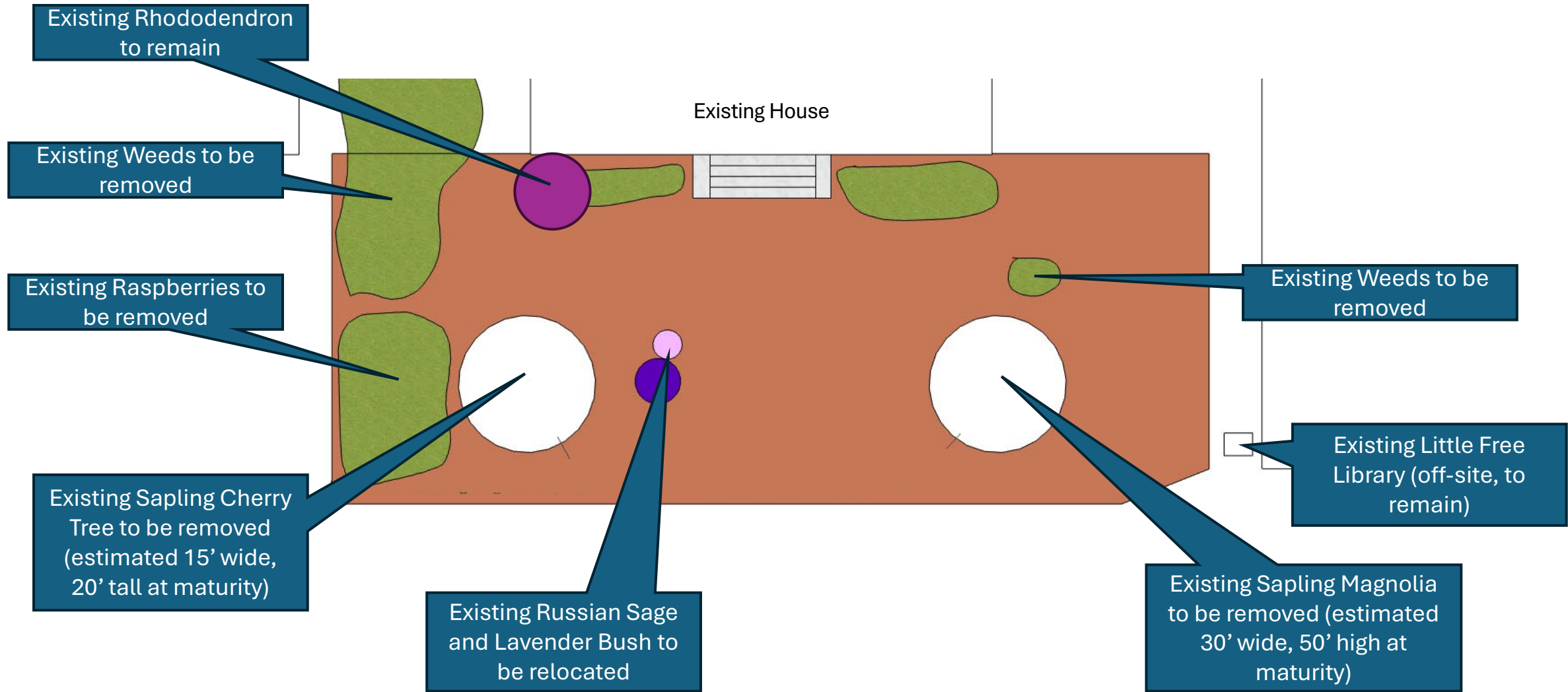
Existing Raspberries to  
be removed

Existing Weeds to be  
removed

Existing Russian Sage shrub  
to be relocated

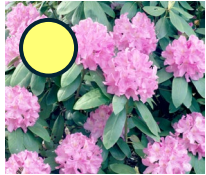
Existing Movable Box  
Planters, to be  
removed

# Existing Condition Plan View





# Proposed Planting Plan



Rhododendron  
36" tall; 48"  
wide



Fern  
36" tall; 36"  
wide



Hosta  
24" tall; 36"  
wide



Panicle  
Hydrangea  
36" tall; 48"  
wide



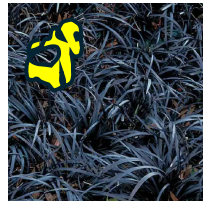
Various  
Annuals;  
Irises, tulips,  
petunias, etc.



Russian  
Sage; 48" tall,  
48" wide



Purple  
Fountain  
Grass; 48"  
tall, 48" wide



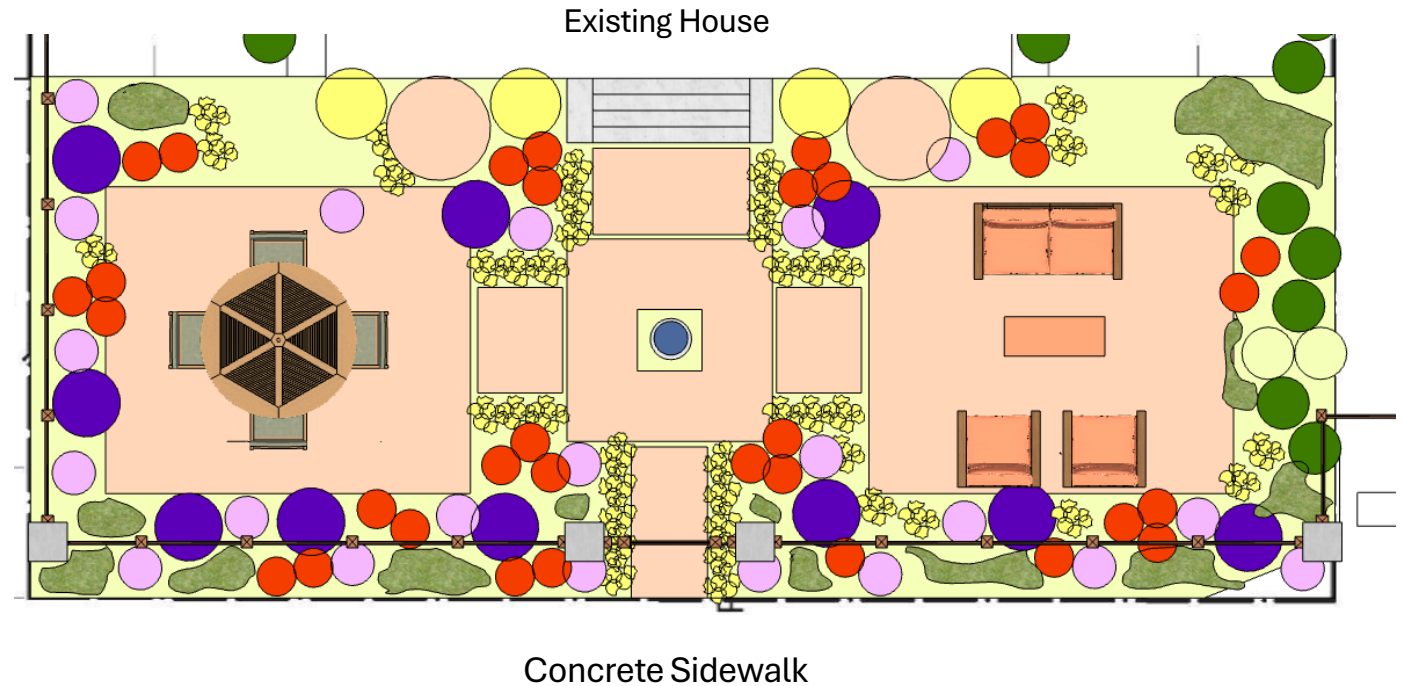
Black Mondo  
Grass; 12"  
tall, 12" wide



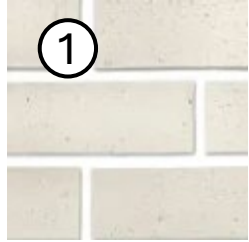
Lavender; 18"  
tall; 18" wide



Limestone Fountain  
(or similar water feature,  
approximately 20" tall)



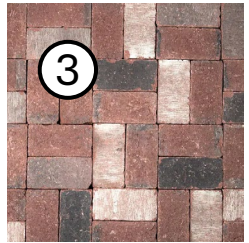
# Proposed Hardscaping and Fence Plan



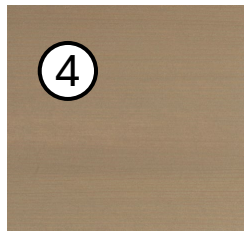
Fence Column: Mutual Materials;  
Face Brick; "Baker's White" color.



National Hardware Black Gate  
Latch

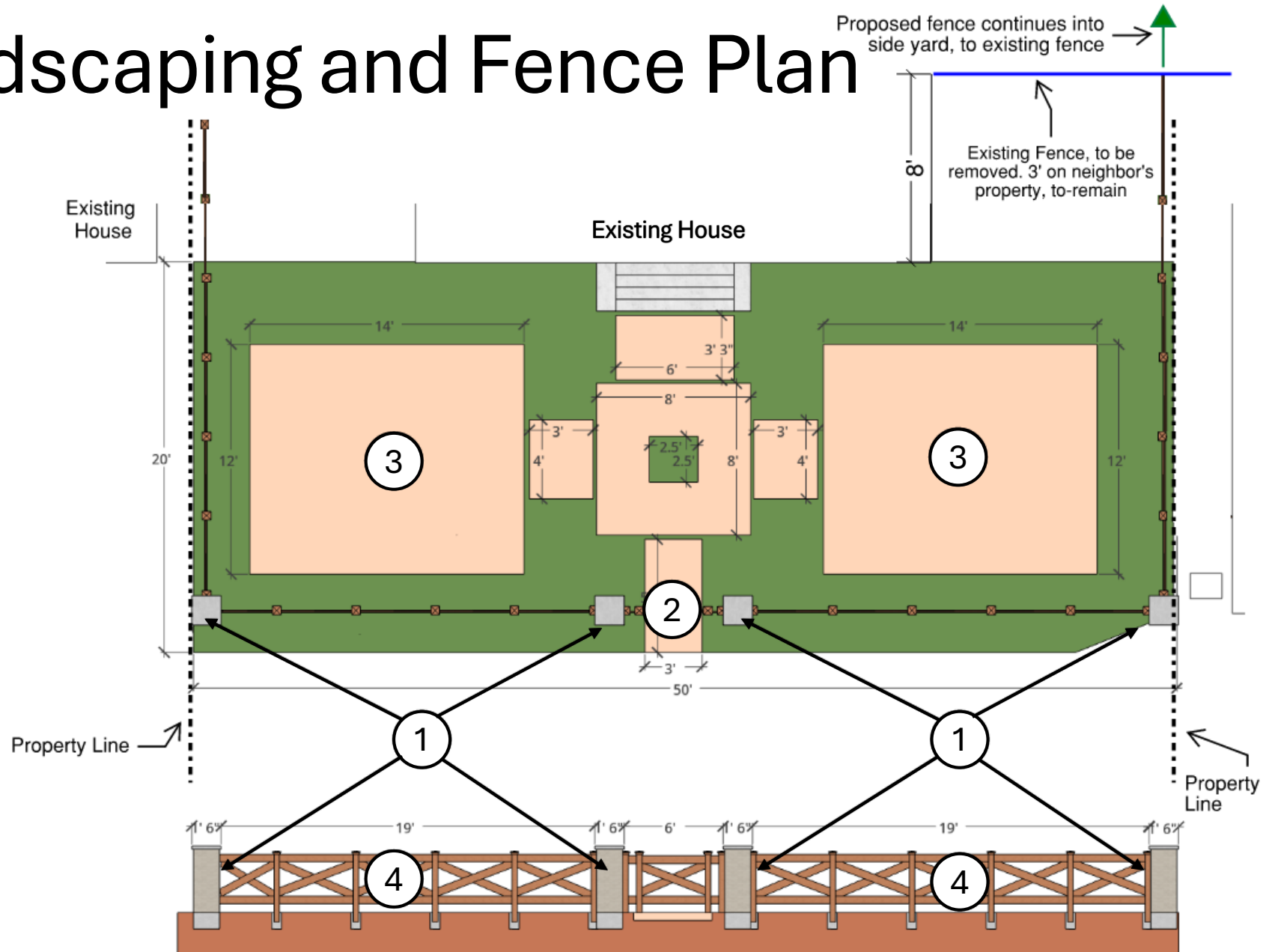


Patio Hardscape: Mutual  
Materials; Roman Clay Pavers;  
"Pioneer Used" color



Fence Wood Panel: Cabot Stain;  
Semi-Solid Opacity; "Taupe" color.

Material: Cedar wood planks and  
4x4 posts with concrete footings





**Thank you!**