

**ENLARGED EXTERIOR ELEVATION  
 GENERAL NOTES**

1. MATERIAL SYMBOLS ON ELEVATIONS ARE TO DISPLAY THE EXTENT OF THE MATERIAL ONLY. THEY ARE NOT TO SCALE.
2. SEE PAGE A30-01 FOR TOWER PANEL TYPES AND MATERIALS LEGEND.

**CURTAINWALL + PODIUM  
 FACADE LEGEND**

- GL-1. CLEAR INSULATED VISION GLASS WITH LOW E COATING (PODIUM)  
 Viracon VE1-2M Insulating Glass HS/HS OR EQUAL
- GL-2. INSULATED GLASS WITH SHADOWBOX (PODIUM)  
 Viracon VE1-2M Insulating Glass HS/HS OR EQUAL
- GL-3. CLEAR INSULATED VISION GLASS WITH LOW E COATING (TOWER)  
 Viracon VRE1-65 Insulating Glass HS/HS OR EQUAL
- GL-4. CLEAR INSULATED GLASS WITH SHADOWBOX (TOWER)  
 Viracon VRE1-65 Insulating Glass HS/HS OR EQUAL
- GL-5. INSULATED VISION GLASS WITH TRANSPARENT FRIT ON #2 SURFACE (TOWER)  
 Viracon VRE1-65 Insulating Glass HS/HS Silkscreen OR EQUAL
- GL-6. INSULATED GLASS WITH SHADOWBOX AND FRIT ON #2 SURFACE (TOWER)  
 Viracon VRE1-65 Insulating Glass HS/HS Silkscreen OR EQUAL
- GL-8. 1 HOUR RATED VISION GLASS
- GL-9. 2 HOUR RATED VISION GLASS

- M-1. FINIS (TOWER)
- M-2. DARK METALLIC XL INT/EXT MULLIONS (PODIUM AND TOWER), MECHANICAL SCREEN WALL, AND TOWER FOLD REVEAL.
- M-3. TEXTURED GREY METAL AT MID BLOCK CONNECTION SOFFITS RIGIDIZED METALS CORP. PATTERN: 6-WL MATERIAL: 304 SS FINISH: SATIN (#4) GAUGE: .024 OR EQUAL
- M-4. METAL PANEL AT UNDERSIDE OF TOWER BRIDGES - M2 FINISH WITH CLEAR COAT.
- M-5. METAL PANEL FAIRVIEW BUILDING ENTRY
- M-6. MULLION COLOR AT SEATTLE TIMES AND PRINTING PRESS. COLOR TO MATCH KAWNEER CLASSIC BRONZE

- T-1. TERRACOTTA BAGUETTES MOUNTED TO ALUMINUM SUBSTRUCTURE IN FRONT OF VISION GLASS  
 AGROB BUCHTAL 2X6 KERASHAPE 4234 CHALK-WHITE MATT OR EQUAL
- T-2. TERRACOTTA BAGUETTES MOUNTED TO ALUMINUM SUBSTRUCTURE IN FRONT OF VISION GLASS  
 AGROB BUCHTAL 6X2 KERASHAPE 4234 CHALK-WHITE MATT OR EQUAL
- T-3. TERRACOTTA EXTRUDED CERAMIC PANELS-RAIN SCREEN SYSTEM  
 AGROB BUCHTAL KERA TWIN 300MM WIDE PANELS - HEIGHT VARIES 407 WHITE GROOVED PANEL OR EQUAL
- C-1. PRECAST CONCRETE PANELS WITH LIGHT SANDBLAST
- C-2. BOARD FORM CONCRETE LIGHT SANDBLAST

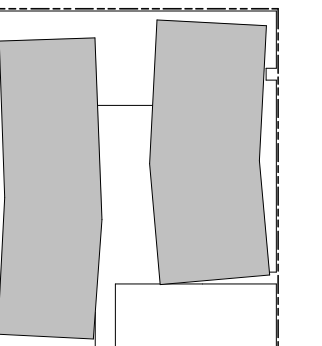
**PROJECT**

1120 JOHN ST.  
 SEATTLE, WA 98109

BULLETIN #2 01/17/23

**ONNI GROUP**  
 300-500 ROBSON ST.  
 VANCOUVER BC V6B 2B7

**KEYPLAN**



**ISSUE CHART**

MARK	ISSUE	DATE
A	Final Landmarks Call	03-06-2020
B	Construction Documents	11-05-2021
C	Construction Documents - IFC	04-04-2022
D	Bulletin #2	01-17-2023
E	Bulletin #4	XX-XX-XX

Job Number 161717  
 TITLE

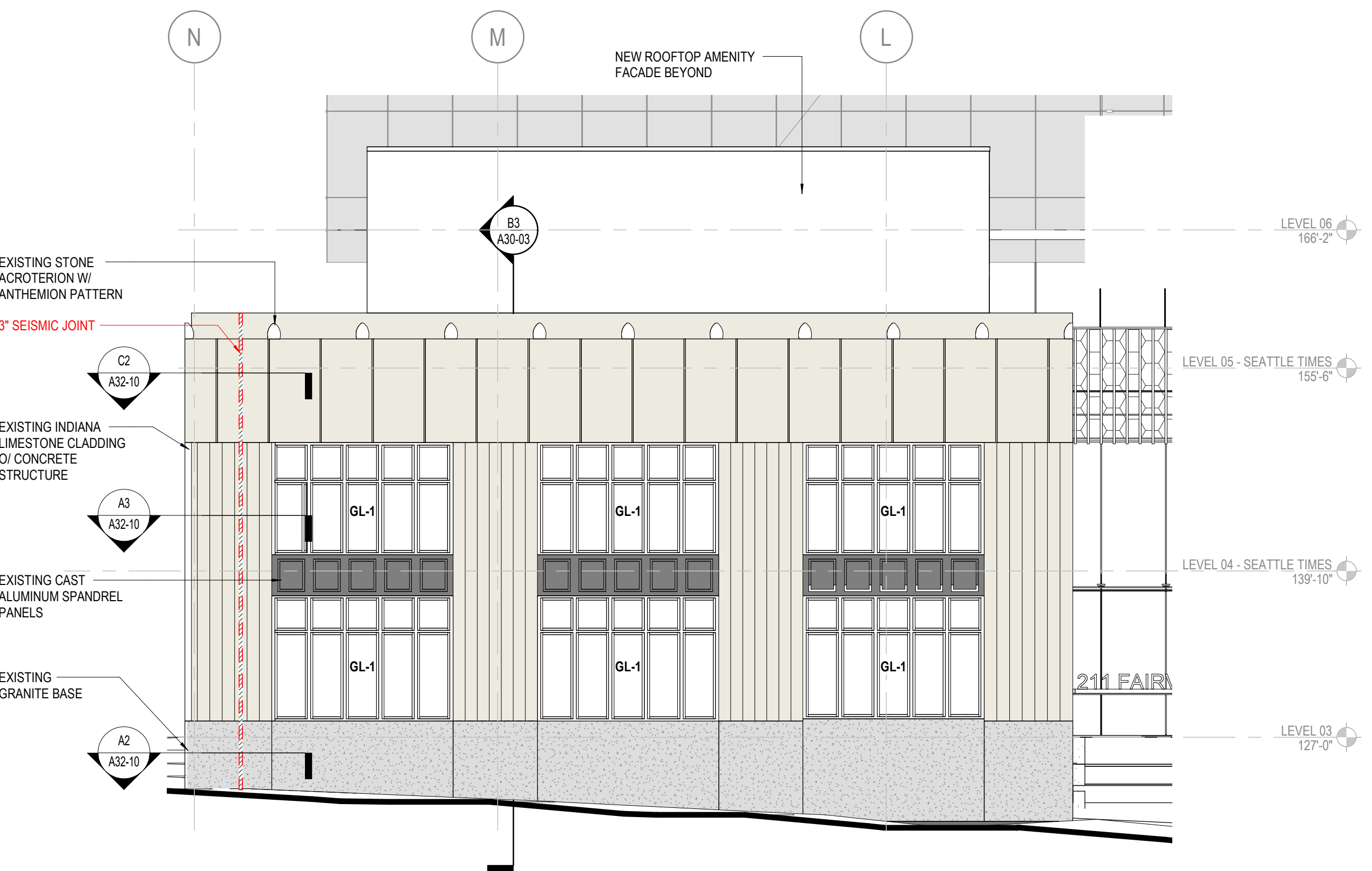
**ENLARGED SEATTLE  
 TIMES ELEVATIONS -  
 EAST & SOUTH**

SHEET NUMBER

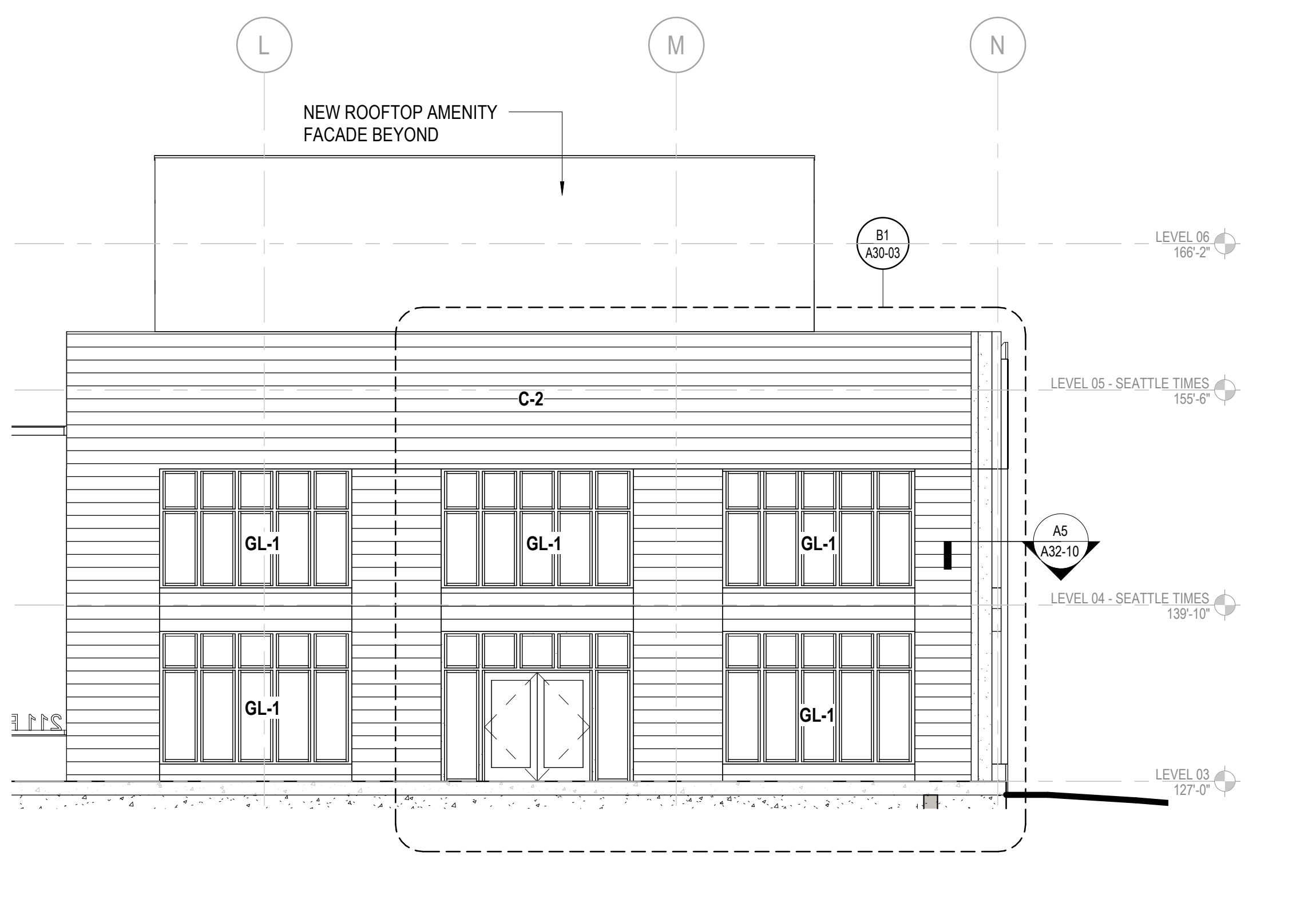
**A30-12**



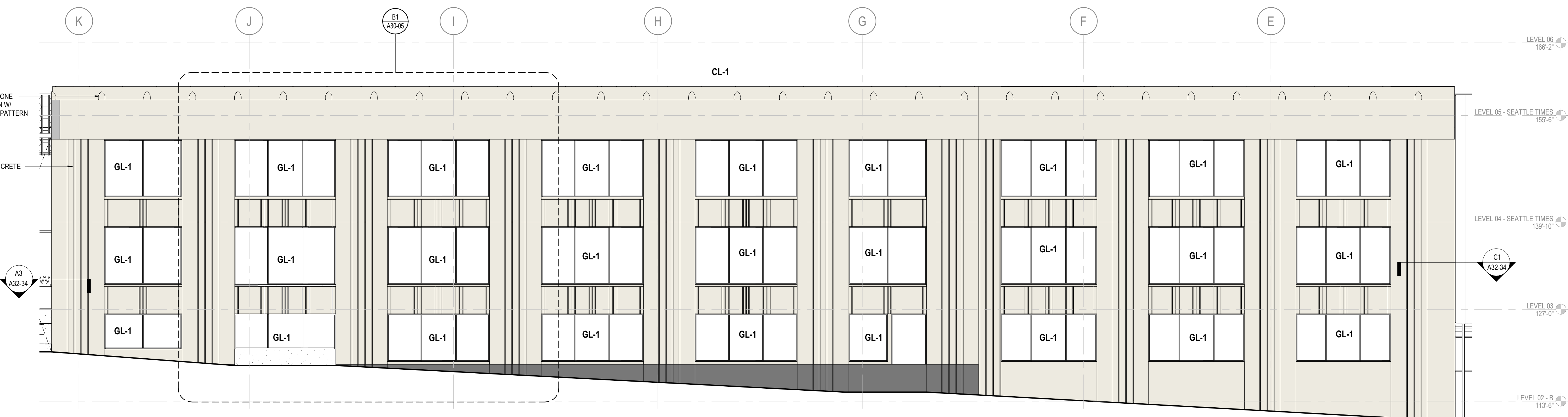
**C2 SEATTLE TIMES - SOUTH ELEVATION**  
 1/8" = 1'-0"



**B2 SEATTLE TIMES - EAST ELEVATION**  
 1/8" = 1'-0"

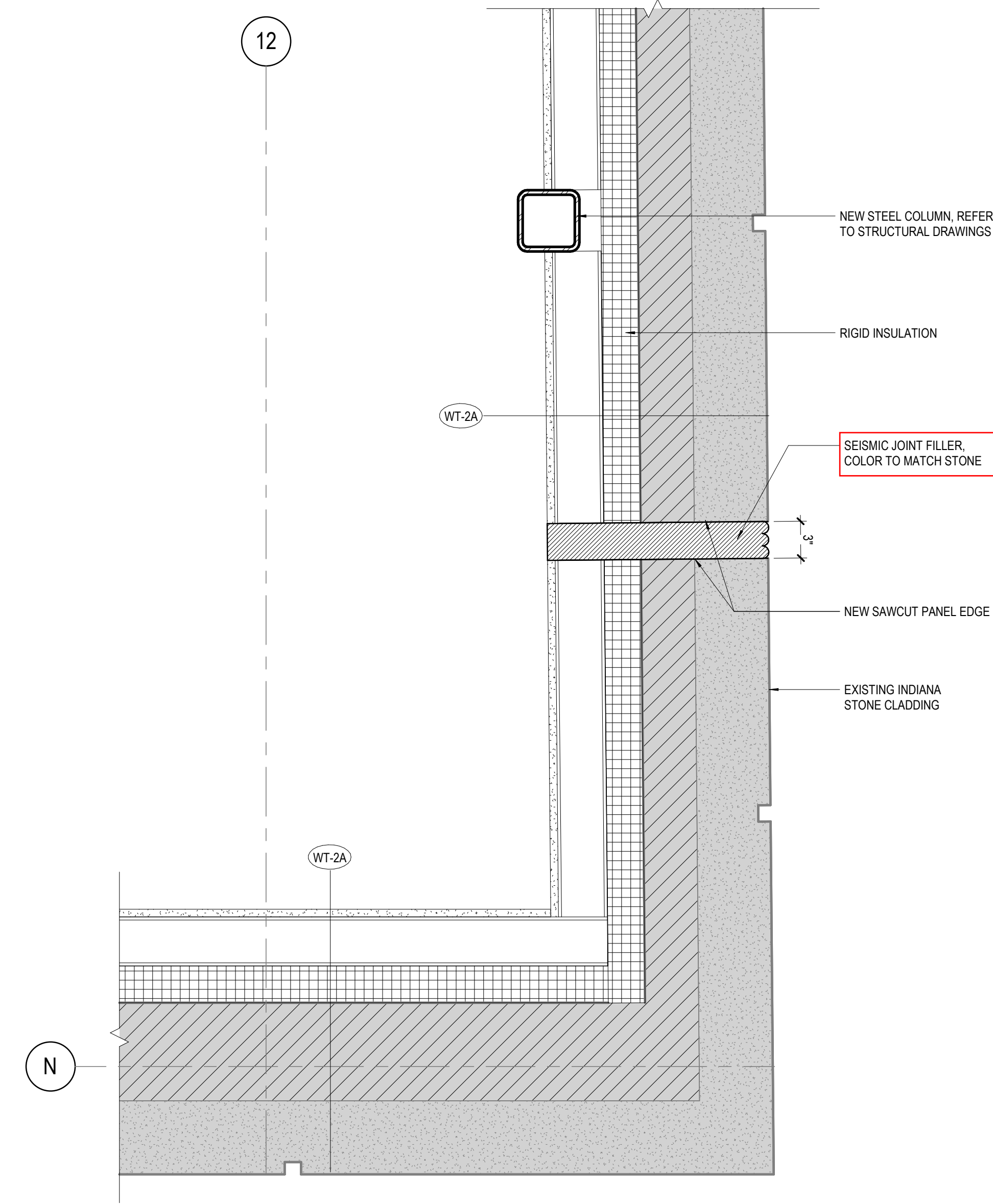


**B1 SEATTLE TIMES - WEST ELEVATION**  
 1/8" = 1'-0"

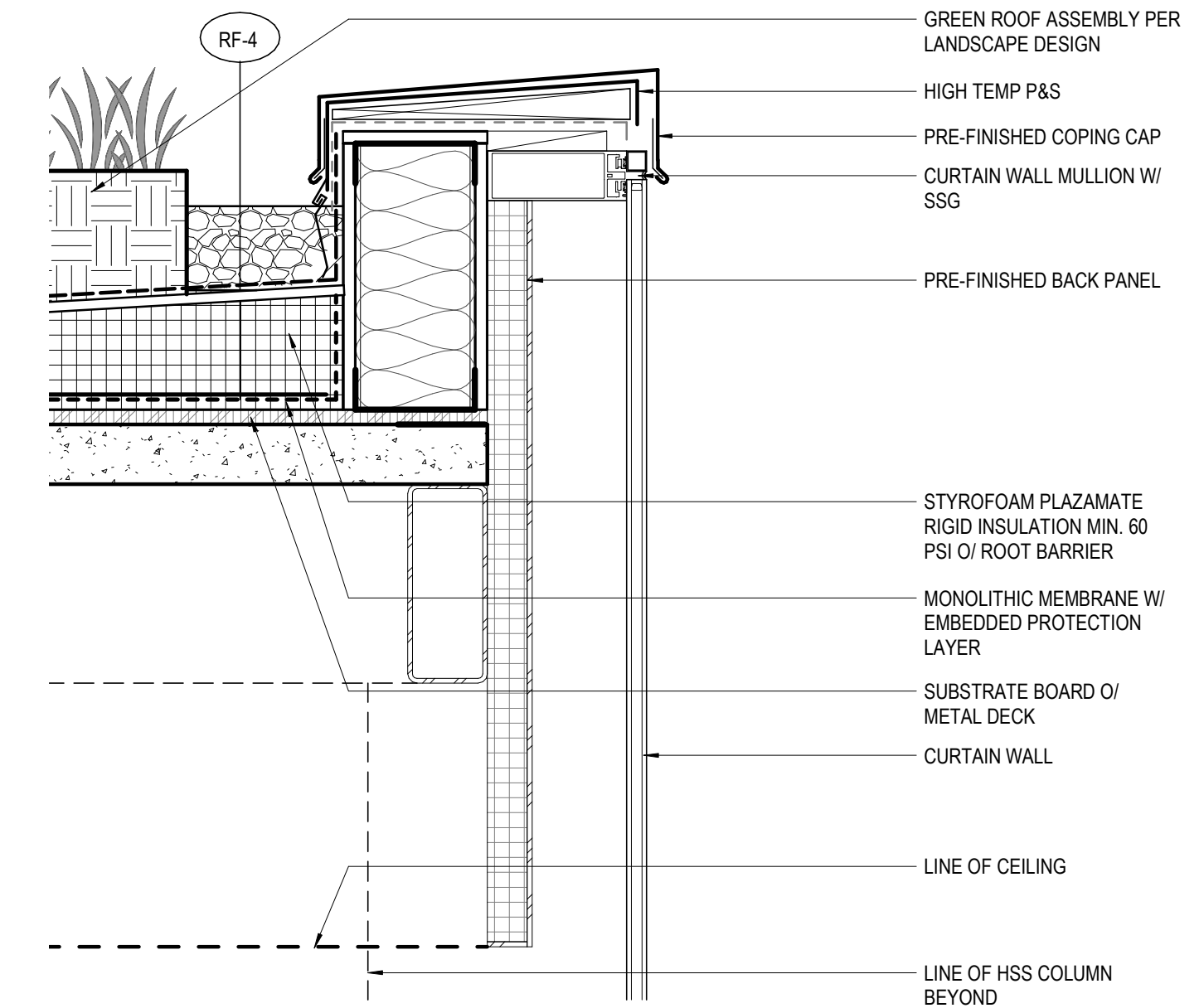


**A2 EAST PODIUM - EAST ELEVATION**  
 1/8" = 1'-0"

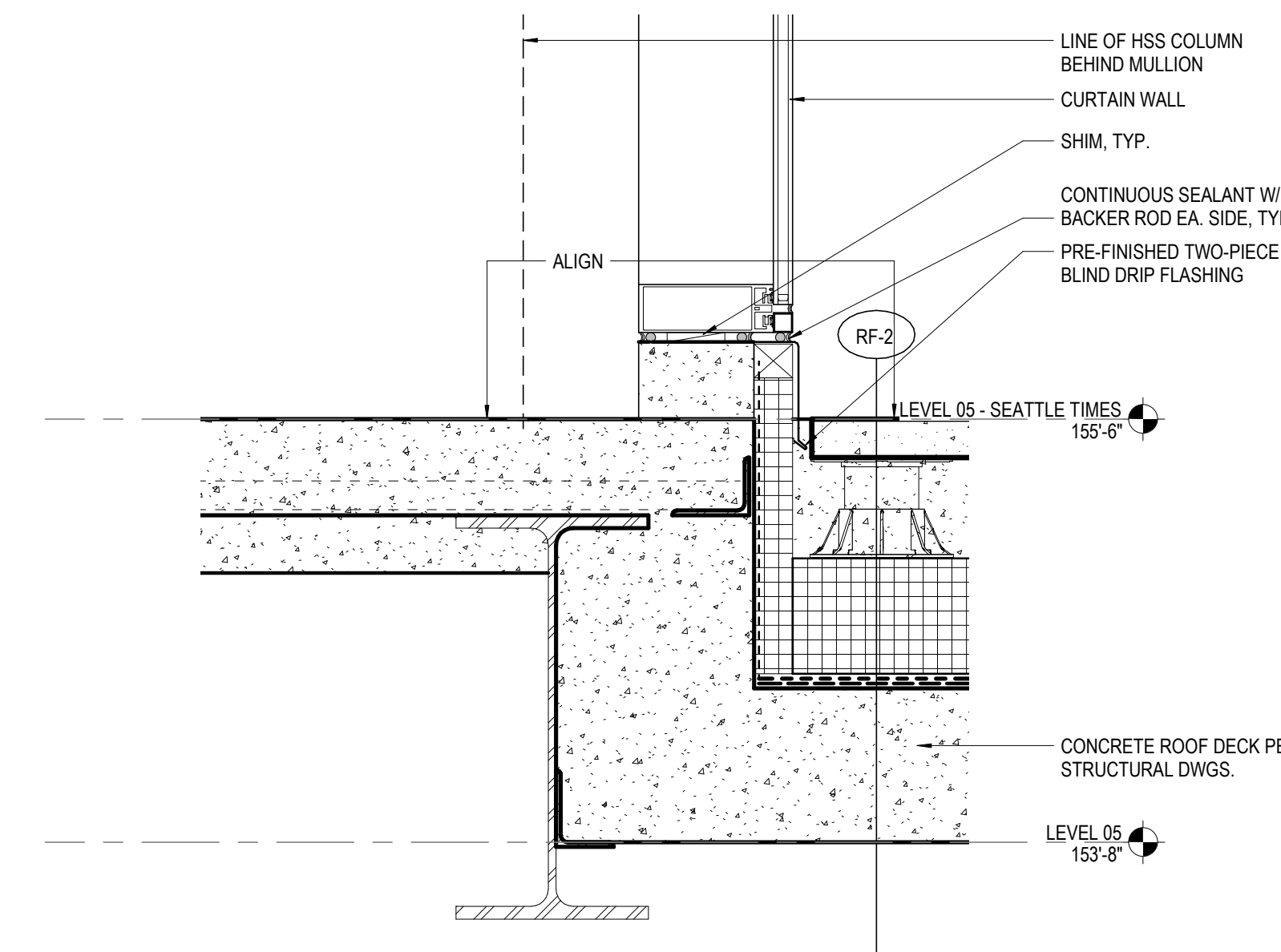




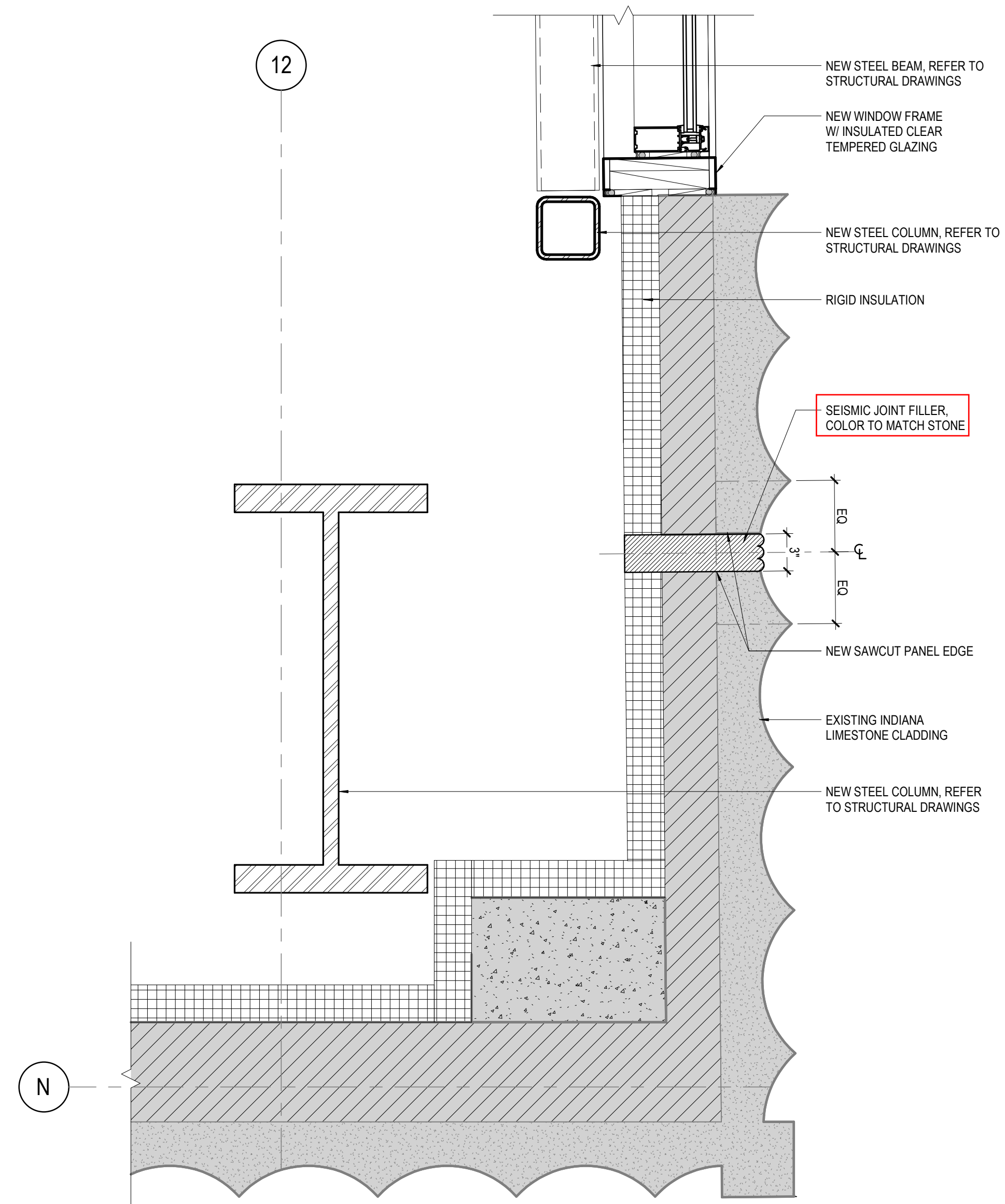
**C2** SE CORNER DETAIL - LEVEL 05  
1 1/2" = 1'-0"



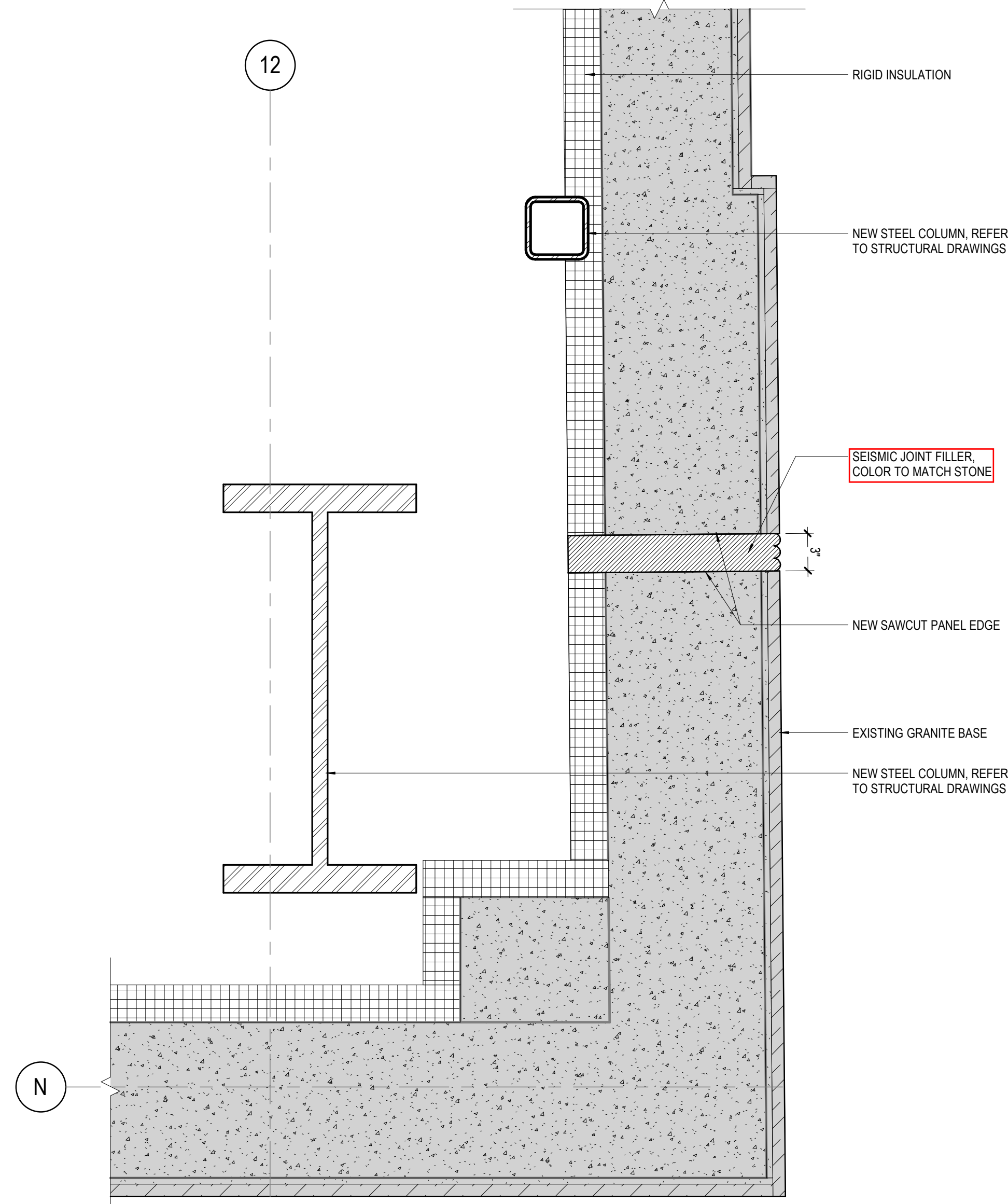
**C1** TYPICAL CW HEAD AT GREEN ROOF  
1 1/2" = 1'-0"



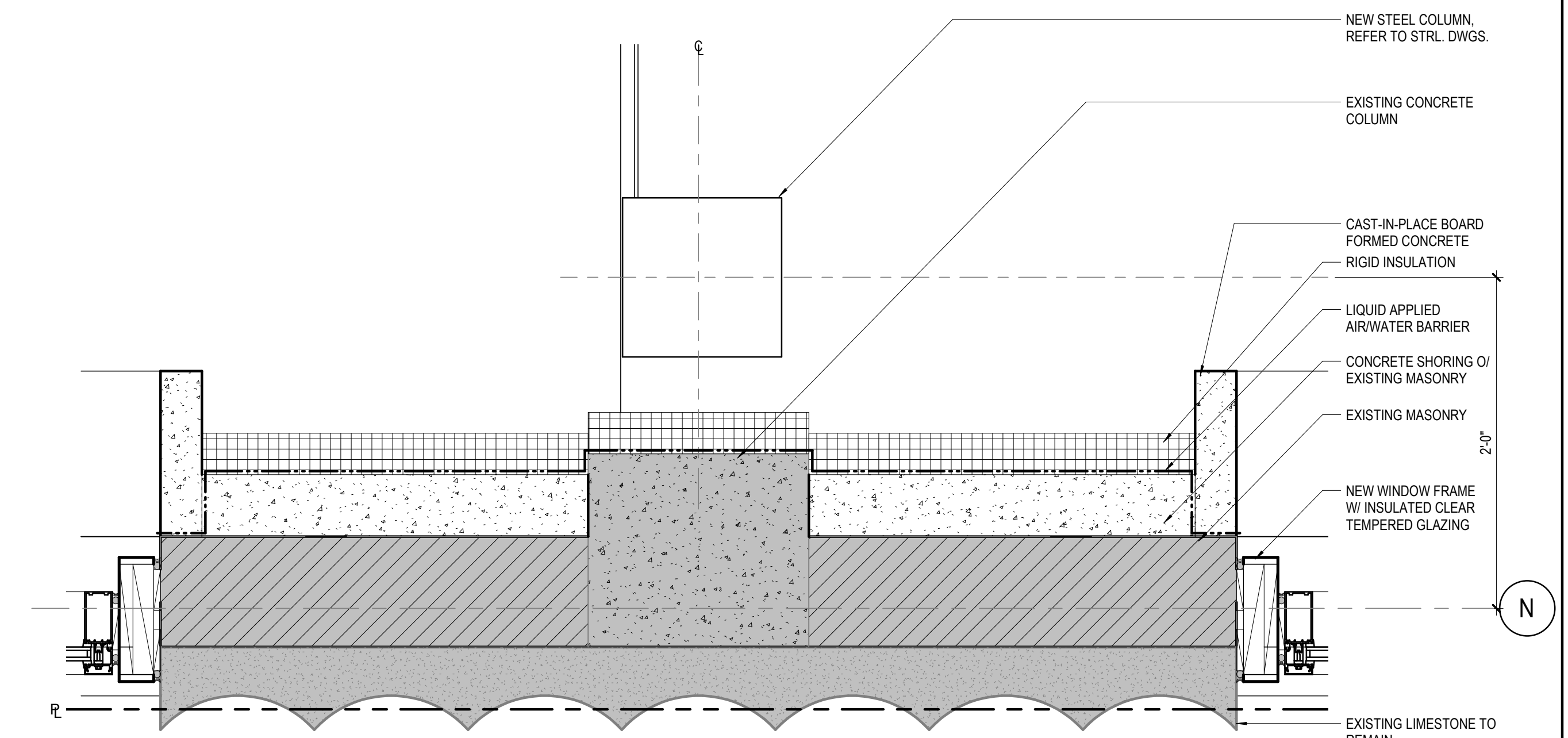
**B1** TYPICAL CW SILL AT SLAB DEPRESSION  
1 1/2" = 1'-0"



**A3** SE CORNER DETAIL - LEVEL 04  
1 1/2" = 1'-0"



**A2** SE CORNER DETAIL - LEVEL 03  
1 1/2" = 1'-0"



**A1** COLUMN SURROUND DETAIL - LIMESTONE PILASTER  
1 1/2" = 1'-0"

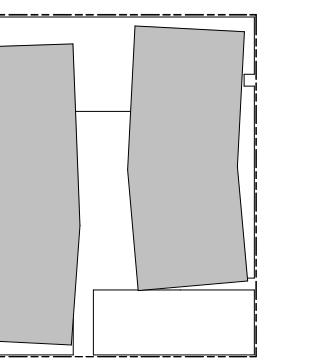
PROJECT

1120 JOHN ST.  
SEATTLE, WA 98109

ONNI GROUP  
300-500 ROBSON ST.  
VANCOUVER BC V6B 2B7

BULLETIN #1 07/29/22

KEYPLAN



ISSUE CHART

MARK	ISSUE	DATE
	CD PROGRESS	03-06-2020
A	Final Landmarks CofA	11-05-2021
B	Construction Documents	12-21-2021
C	Construction Documents - IFC	04-04-2022
D	Bulletin #1	07-29-2022
E	ASI #05	2023-03-08

Job Number 161717  
TITLE

EXTERIOR ENVELOPE  
PLAN DETAILS -  
SEATTLE TIMES

SHEET NUMBER

**A32-10A**