

UNB Rehabilitation Photographs

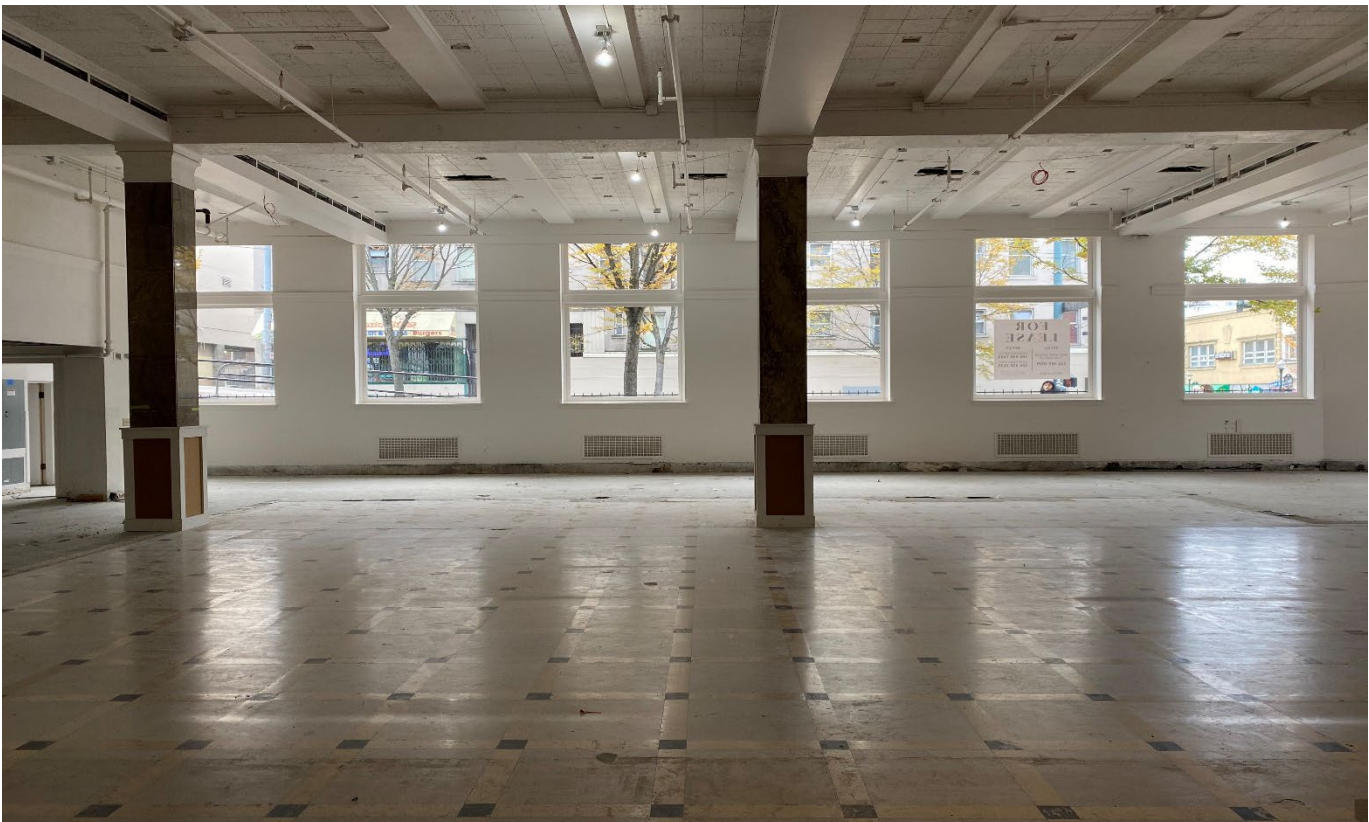
1. Before construction - Bank teller stations at purchase. First floor looking SE.



Before construction - Main entry at purchase. First floor looking W.



During construction - Main floor LL work. pre Ti work. First floor looking S.



During LL construction phase - Main entry. First floor looking W.



During LL construction - Main marble stairs at purchase. Basement looking S.



Before construction - Street Level at Purchase. First floor looking E.



Before construction - Vault at Purchase. Basement looking into main vault (looking S).



Before construction - 2nd floor at purchase. Second floor looking W at top of Marble stairs above 45th street lobby.



Before construction - Bank conference in basement at purchase. Basement looking SW.



Before construction – Typical second floor office at purchase. Second floor looking SW.



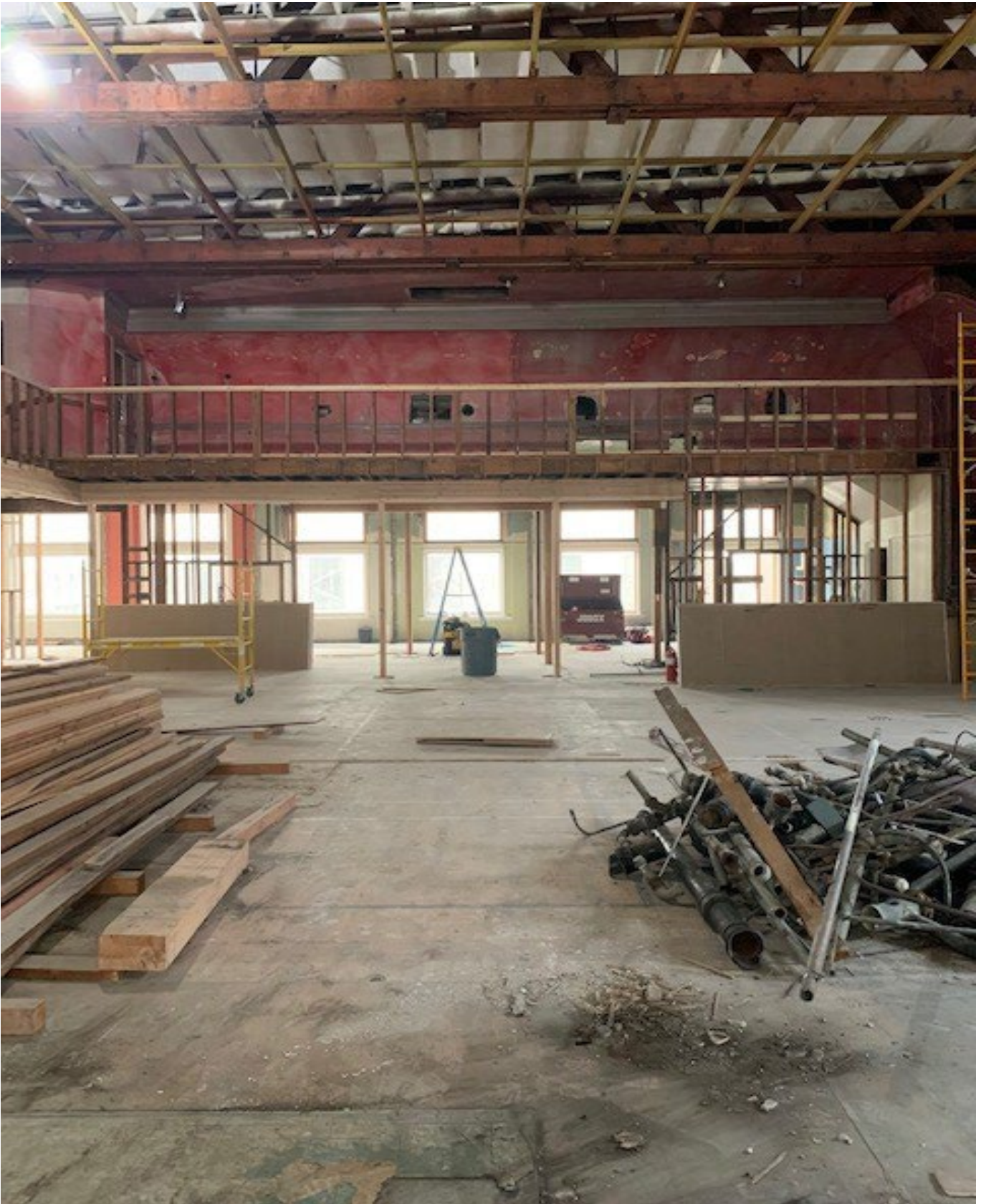
During LL construction - Exterior rehab with sign and ATM down



Before construction - Exterior at purchase as a closed down Wells Fargo Bank. Exterior has failing paint, faded canopies, tucking on stone, cracked glazing, lack of lighting, etc.



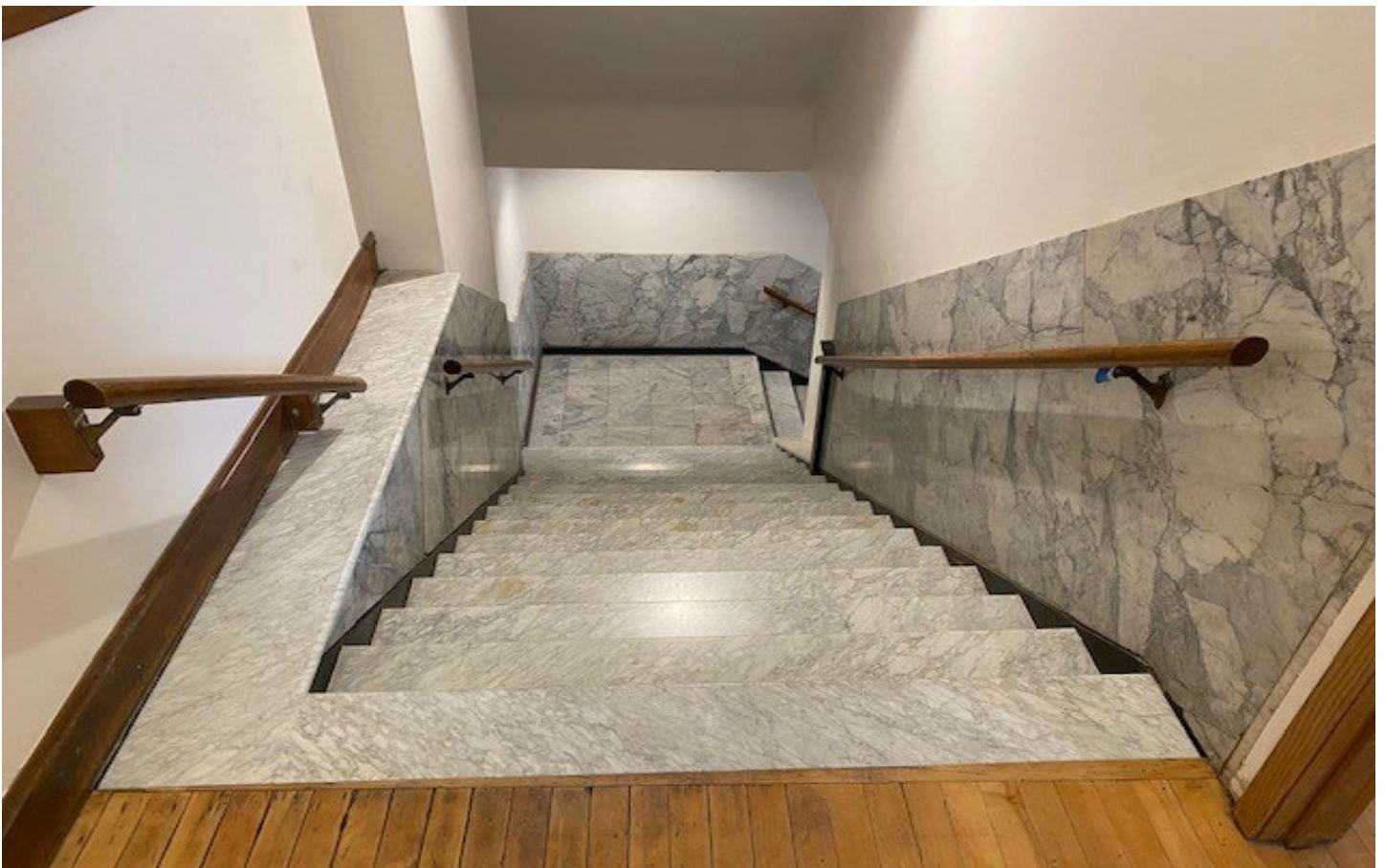
2. During LL construction - 2nd floor early demo. LL work. Second floor looking W.



During LL construction - work Second floor post LL work. Second floor looking SW.



During LL construction- 45th street lobby restored during LL work. Second floor looking E.



During LL construction- Entry post rehab. Cleaned up stone/canopy/windows/glazing.



During LL construction- hard wood restoration looking SW, second floor.



During LL construction- N wall on first post LL work



During LL construction- Office area rehabs on Level 2. Looking W.



During LL construction- Rehab canopy / front doors, etc. - post LL work. Looking E.



During Seismic and TI construction- 2nd floor office area during TI work looking SW.



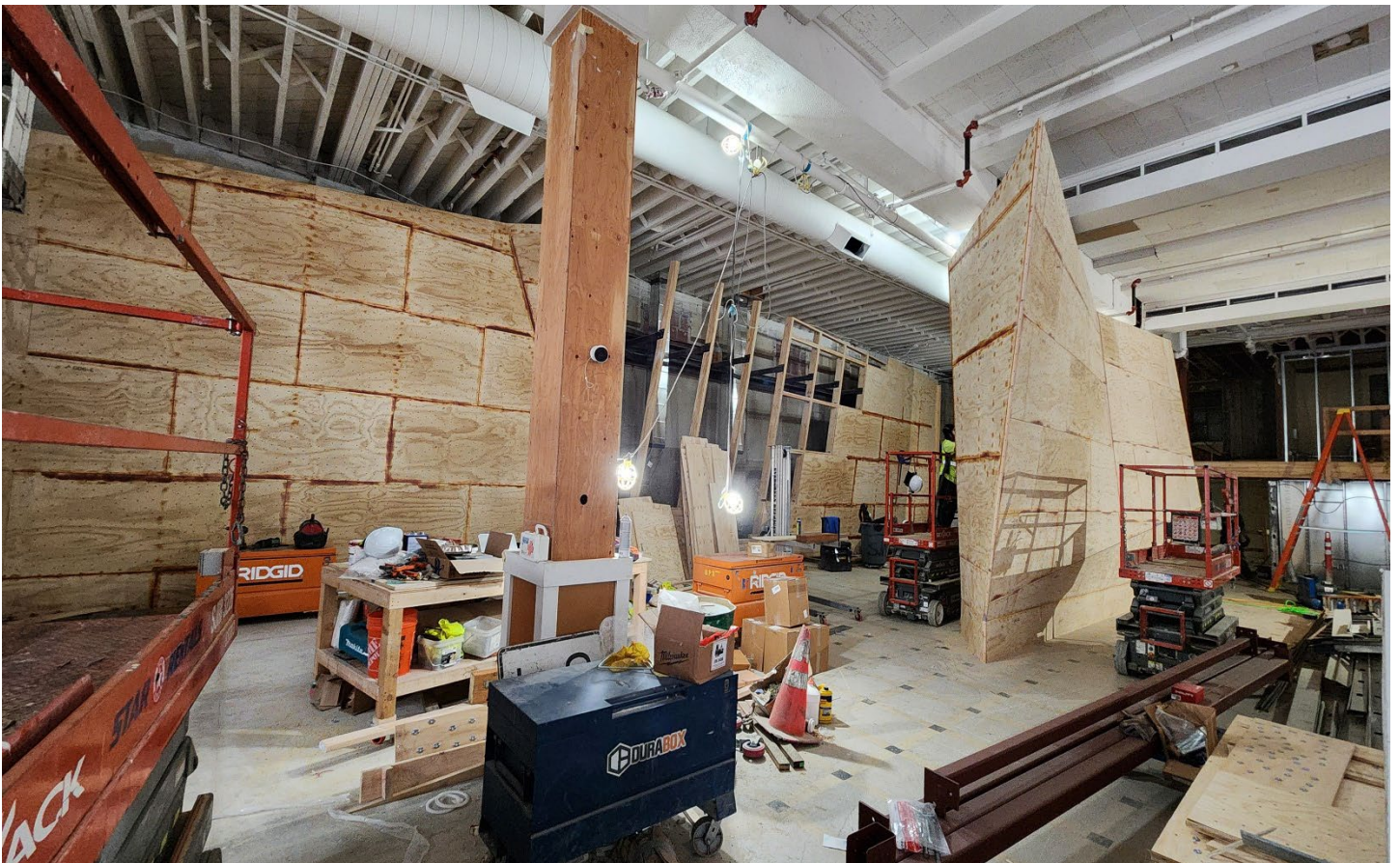
During TI/seismic construction- 2nd floor work during TI phase looking NE.



During seismic and TI construction- 2nd floor looking NW.



During TI/Seismic construction- First floor work during Ti phase looking NE at main entry.



During final LL construction- Fixing broken glass at LL phase. Façade looking NW.



During final LL construction- 45th street facade during rehab



During TI construction- New power room during TI work looking N in utility room.



Post LL construction- New street panels after bringing sprinklers to site looking E.



Post LL work - Open house post LL work 1st floor looking N.



Post LL work- Open house post LL work 2nd floor looking SW.



During construction- Preservation award for UNB post rehab from Historic Seattle.



During TI construction- Outside of vaults prior to opening looking W.



During TI construction- Bathroom and showers prior to opening in basement looking E



During TI construction- New elevator/ egress to alley during TI work looking SE on Mezz



During TI construction- Work out area during TI work looking SW on level 1.



During construction - Vault 2 work, new flooring during TI, basement looking S.



3 . After TI construction - First floor climbing area at open, looking NE.



After TI construction - First floor work out area at open, looking S.



At end of TI construction - 2nd floor climbing area prior to open looking W.



After TI construction - New Stair core on level 1 during TI work looking NE.



After TI construction - Second floor climbing prior to opening looking E.



After TI construction - Mezz area connection egress paths to 45th



After TI construction - 2nd floor W facade prior to opening looking S.



After all construction - 45th street lobby and marble stairs pre-opening looking S



At completion of construction - Exterior of vault looking S.



At completion of construction - inside of Main Vault into Sauna – looking S.



After construction - Mezz area looking towards new elevator/stair code. Looking N



After construction - New Bouldering sign at entry, looking S.

