

East Pine Substation Expansion of North Wall

1501 23rd Avenue

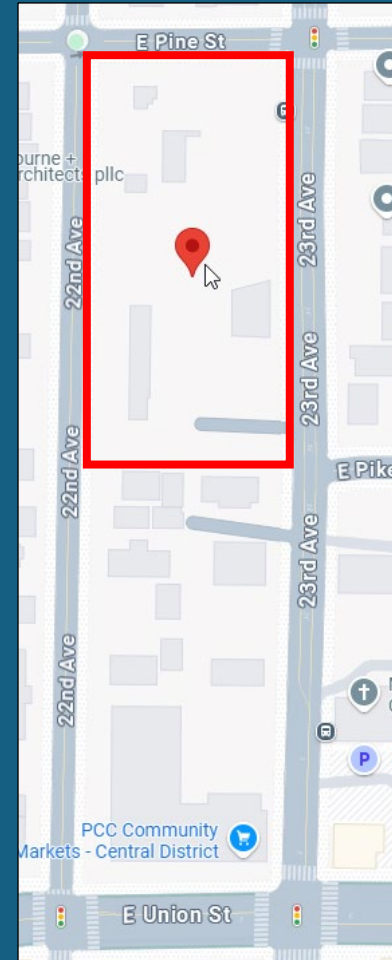
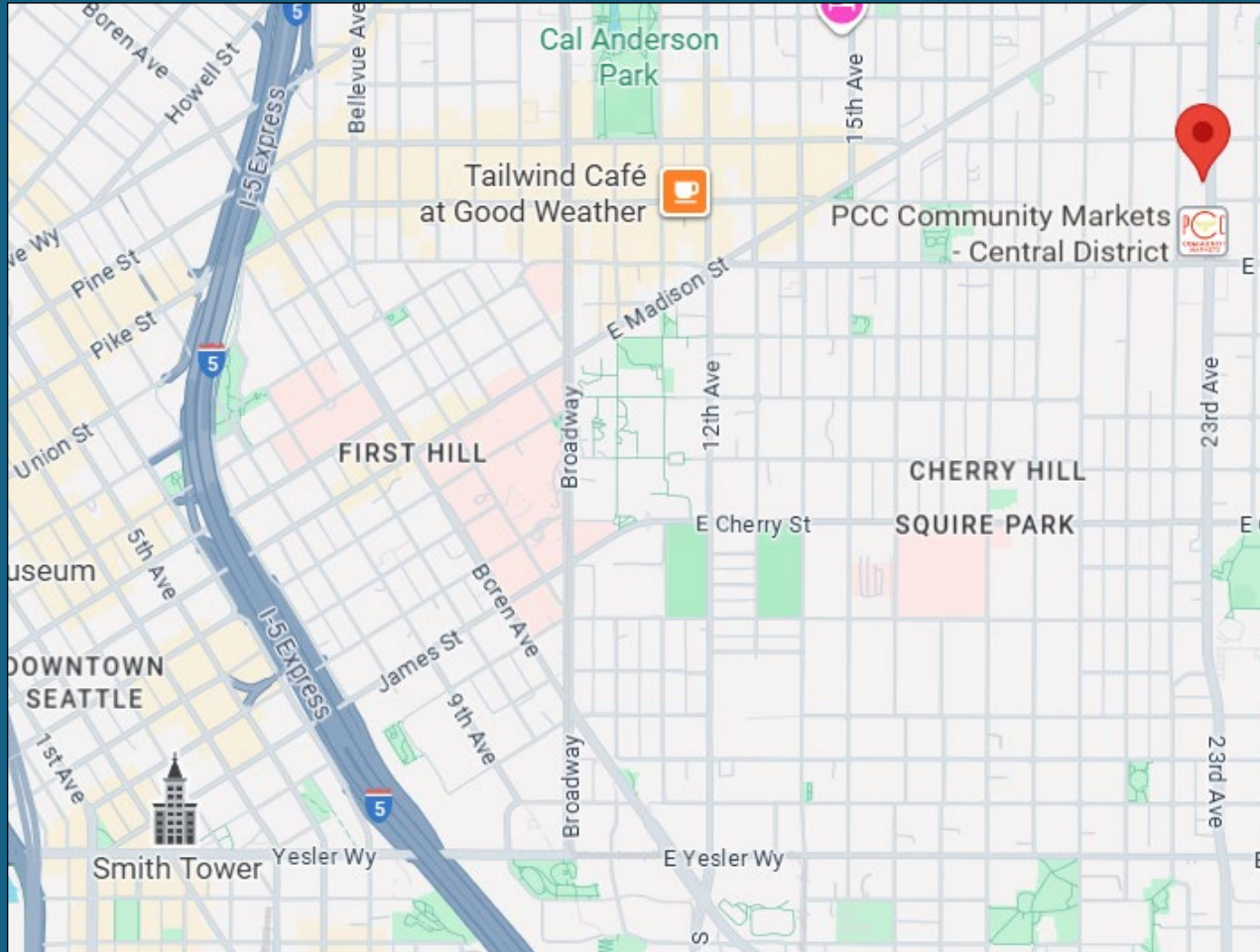
April 2026



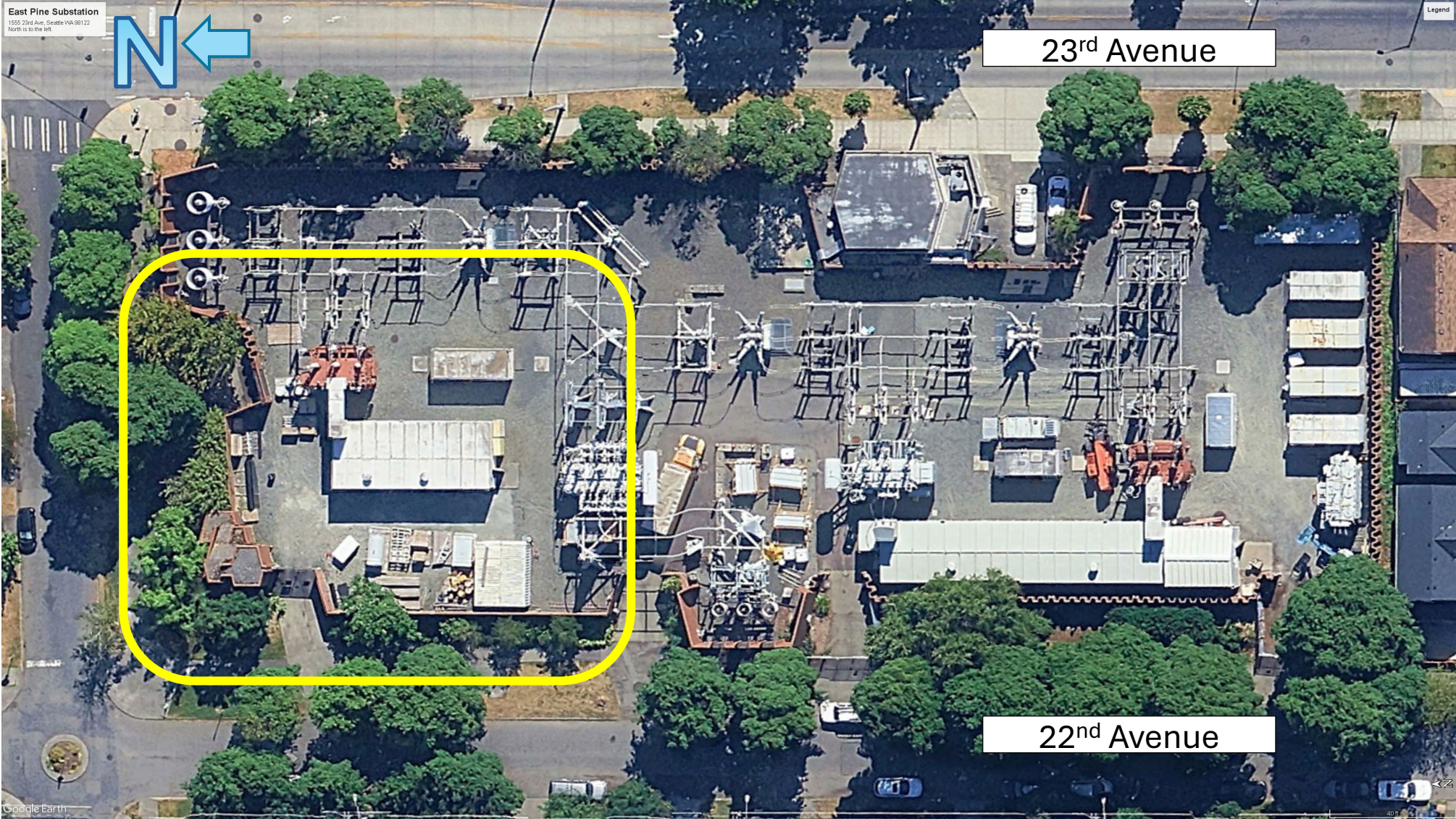
Seattle City Light

WE POWER SEATTLE

Location



Aerial View – Yellow Outline is Project Location



Street View - From SW Corner of the Substation, Facing NE



Street View – Near NW Corner, Facing SE



Street View - From NW Corner, Facing SE



Street View – Left of NW Corner, Facing SE

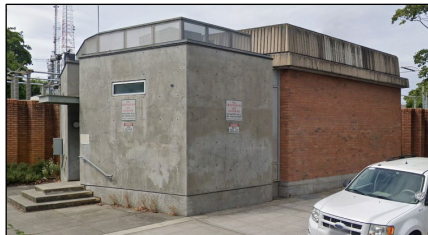


Street View - From East Pine St., Facing South, Substation's N Elevation



Electrical Terminology 101

Substation – A defined network of switching, control, and routing equipment, with transformers to carry **load** (also known as electricity or power). They receive, distribute, and transmit power. Typically includes:



Control Building - Serves as the substation control center, can be automated or manned, and manages the flow of electricity in and out of the substation.



Circuit Breakers – A protective device that interrupts electrical current during abnormal conditions such as a short circuit or overload. Protects the transformers and related equipment from damage and prevents widespread outages.

Electrical Terminology 101

Key Terms (continued):



Feeders – A component that carries electrical power from a substation or a distribution point to the consumer (e.g., residences, businesses, hospitals, etc.)



Transformers – Serves to step up or down voltage levels to ensure that electricity can be transmitted efficiently over long distances and safely distributed to consumers. Also called a “Bank.”

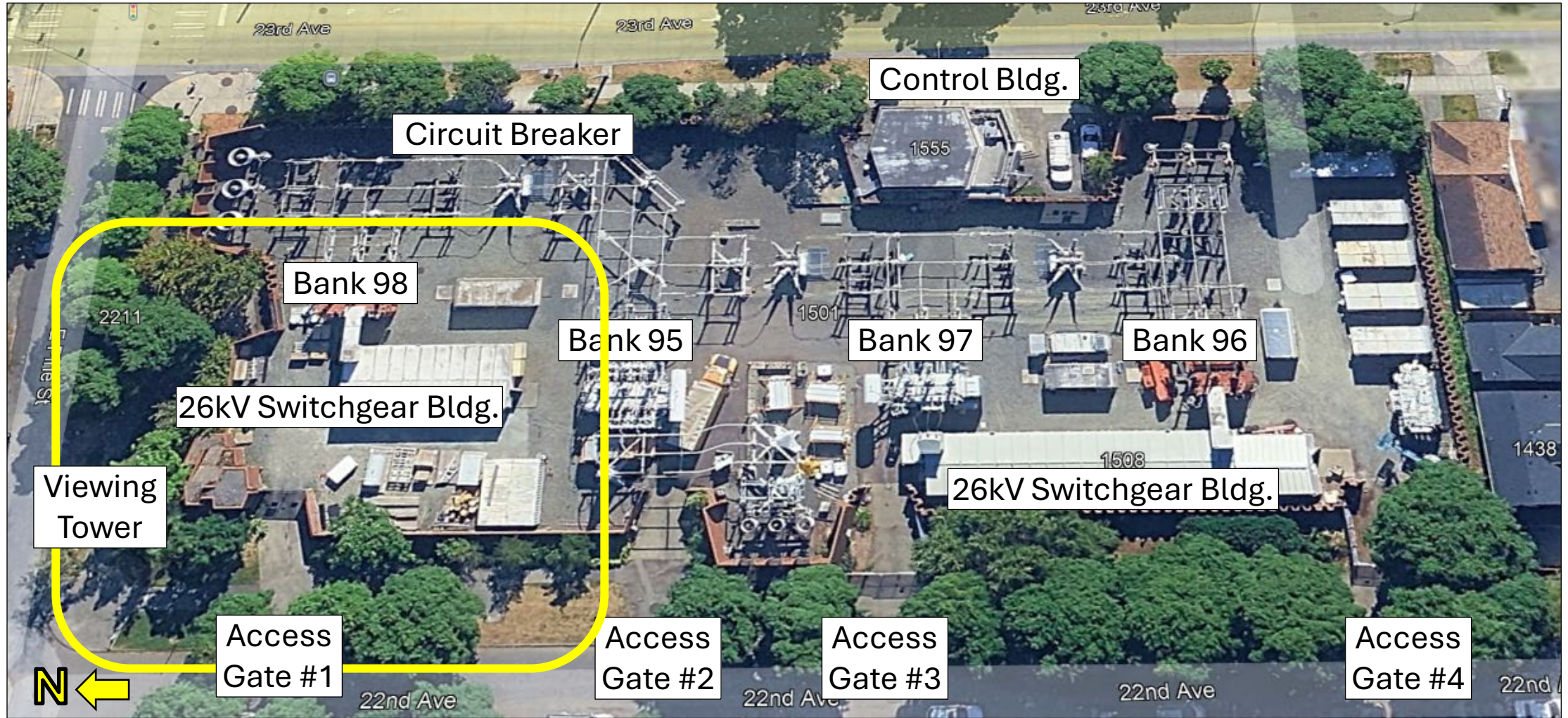


Switchgear – Electrical disconnect switches, fuses or circuit breakers used to control, protect, and isolate electrical equipment. Also used to de-energize equipment to allow work and clear short circuits.

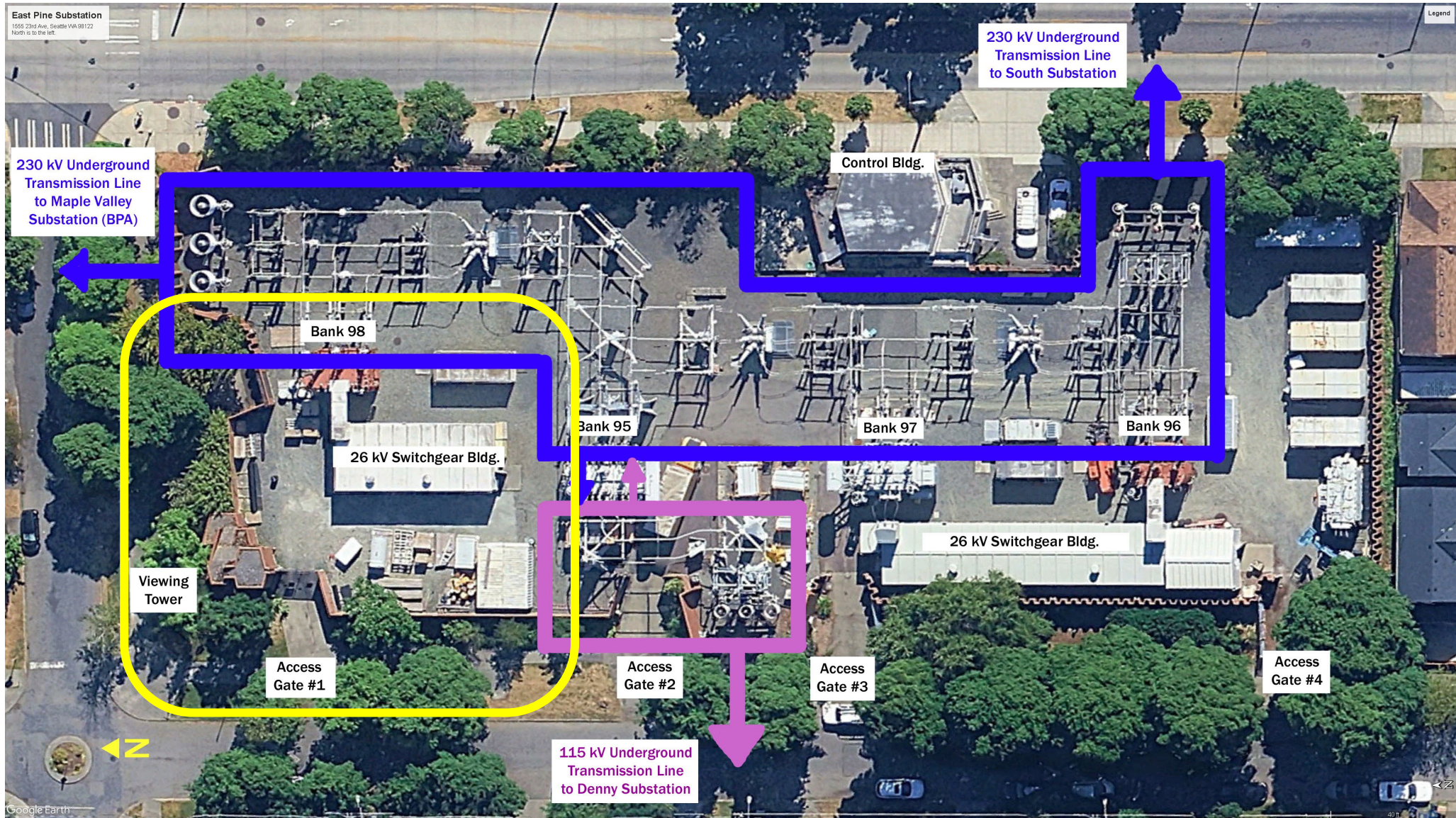
East Pine Substation within SCL's Electrical System

- First carried load in February 1967
- Handles 230 kV, 115 kV, and 26 kV levels
- Distribution and Transmission Substation
 - Distribution – Transformers step down the voltage for distribution at a local level (e.g., 230 kV to 26 kV).
 - Transmission – Interconnects with the Northwest power grid allowing for management of power flow and system stability throughout the region.
- Connects to:
 - Broad Street Substation and Denny Substation
 - South Substation
 - Maple Valley (BPA)

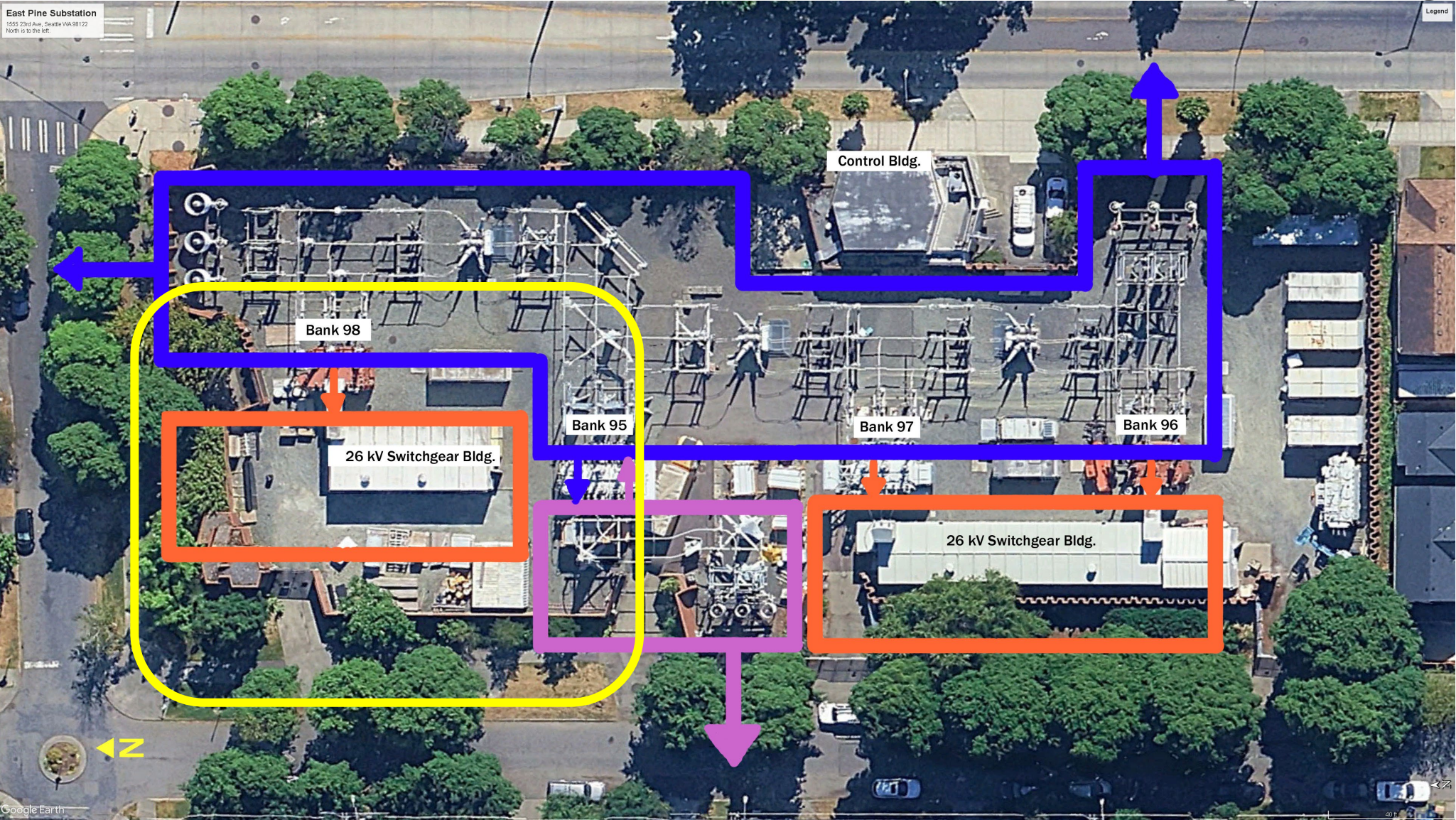
East Pine Substation Components



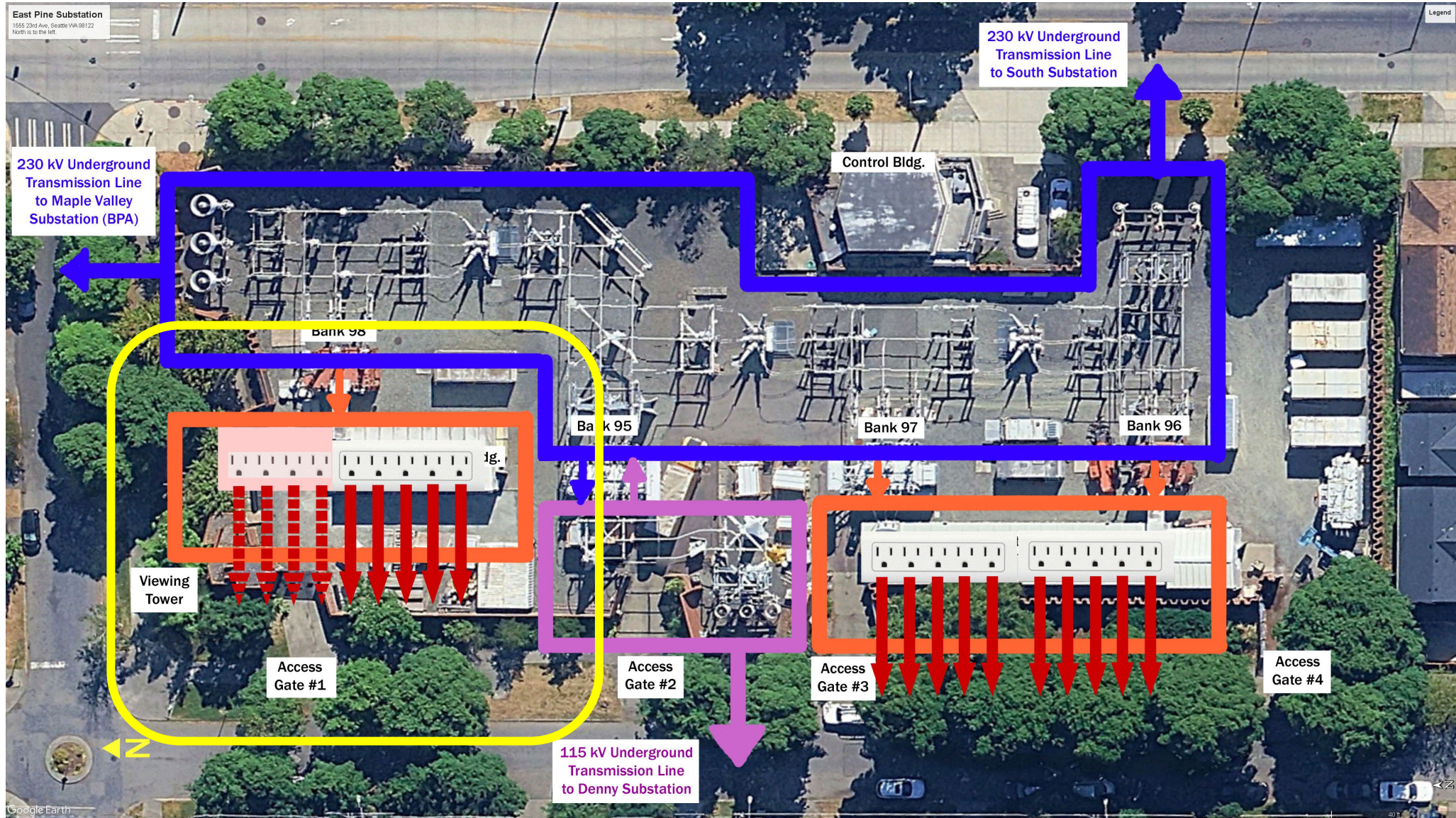
Aerial View – 230kV and 115kV Electrical Connections



Aerial View – 26kV Electrical Connections & Switchgear Bldgs.



Aerial View – 26kV Switchgear / “Power Strip” Connections

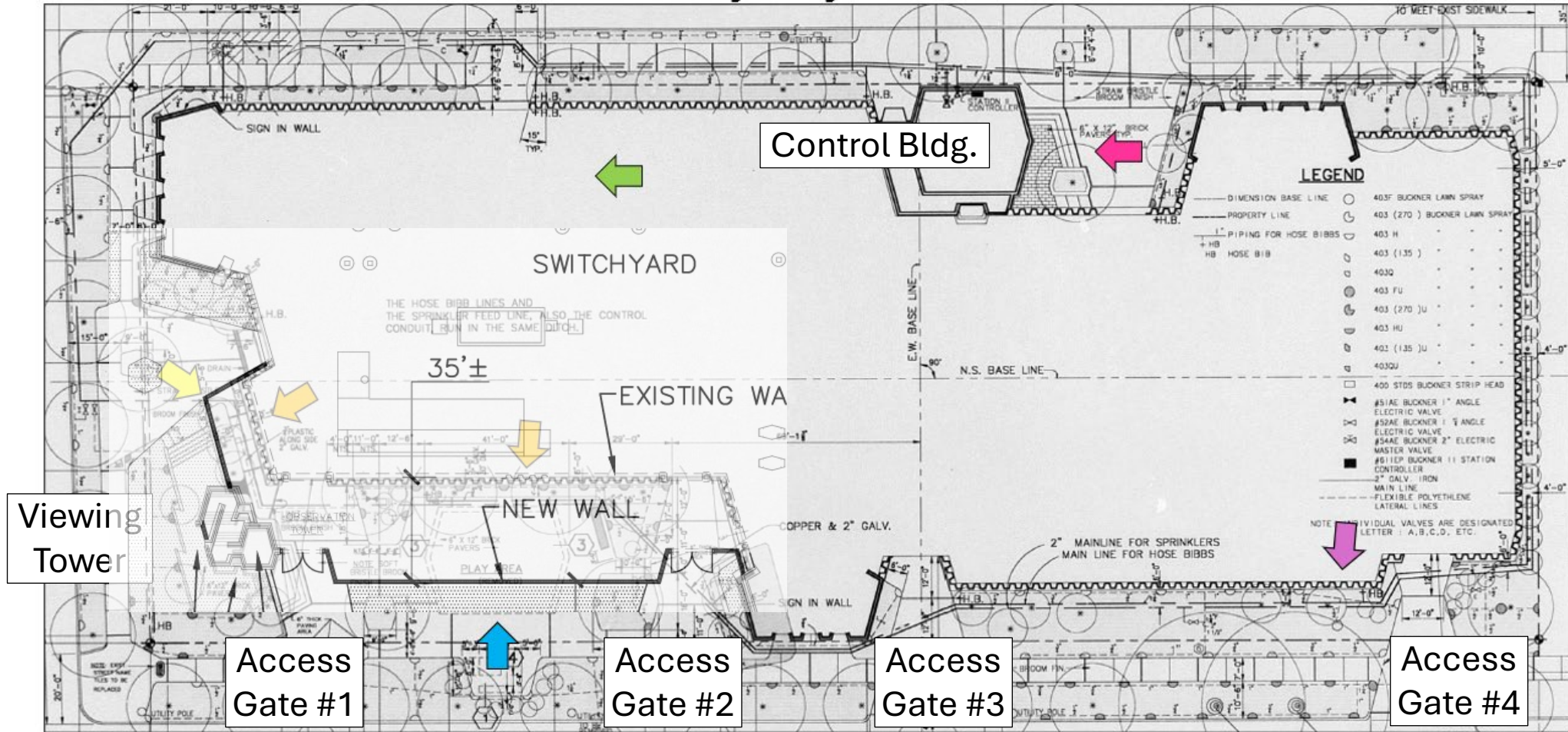


Changes Over Time

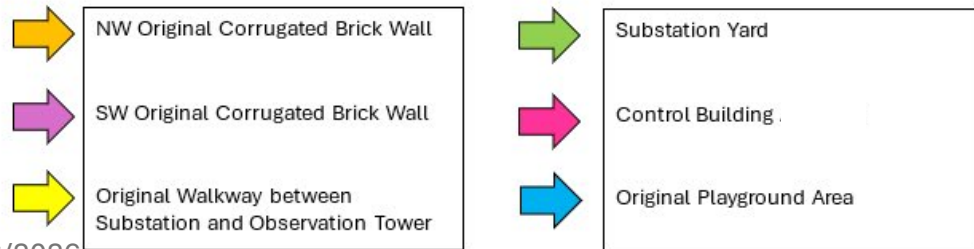
- 1967-68 Substation completed to original design
- 1975 Electrical equipment added within the yard. Playground filled in.
- 1994 SW wall expanded out due to 26kV Switchgear Building Addition
- 1998 Control Building receives an addition on the south elevation
- 2002 West Wall and Access Gates #1 and #2 expanded out

East Pine Substation – Changes Over Time

Original Design - 1966



(Source: D-22266, Revision 6 (1997))



Note: PPT Animated Slide.

May 1967 – West Elevation



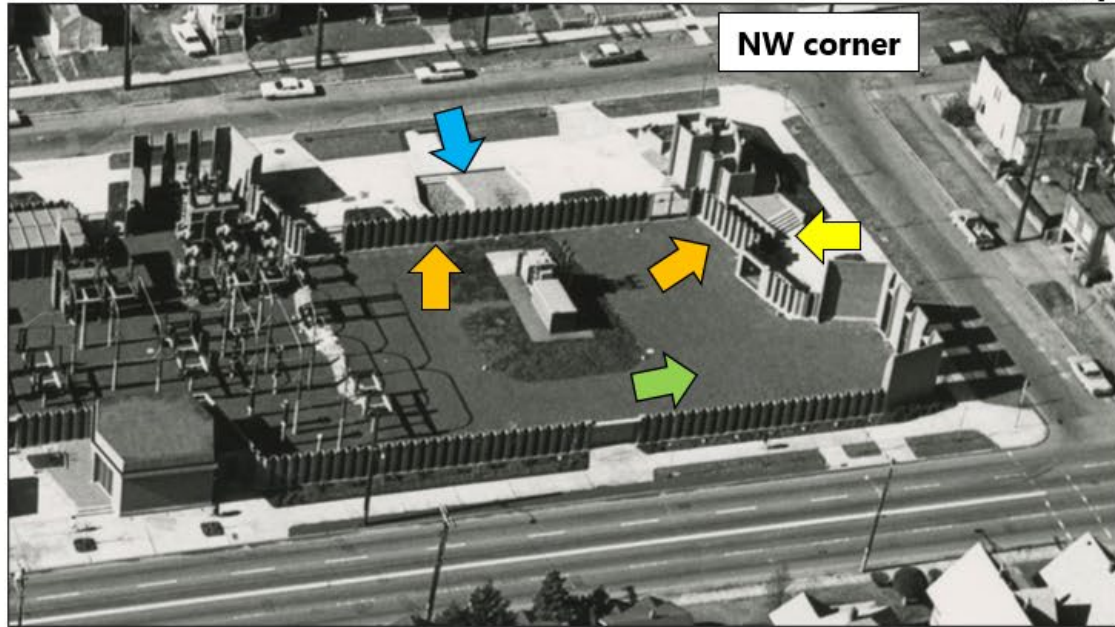
NW Original Corrugated Brick Wall



Original Playground Area

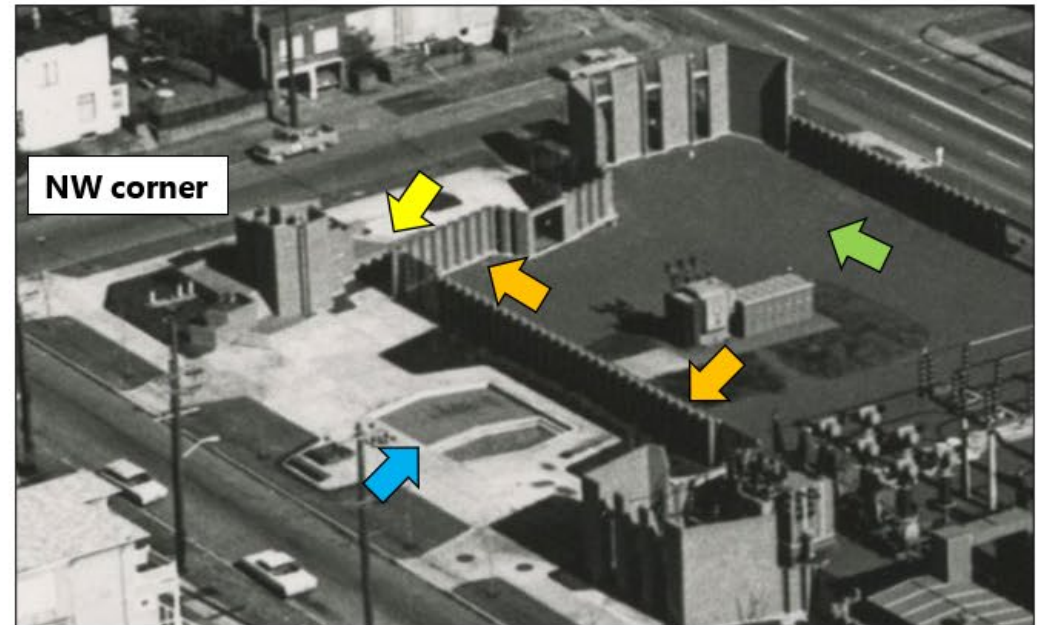


February 1969

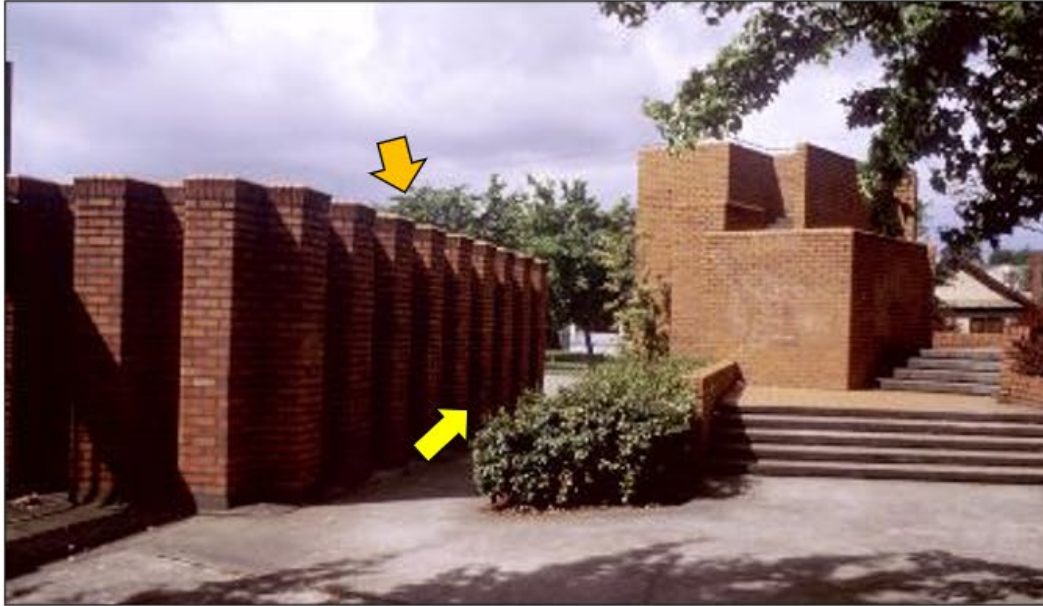


Orange arrow: NW Original Corrugated Brick Wall
Yellow arrow: Original Walkway between Substation and Observation Tower

Green arrow: Substation Yard
Blue arrow: Original Playground Area



c. 1969-1970



North side of the substation, Tower's East Elevation (SMA #123758 (1967-1970))



View south from top of tower. SMA 123759 (1967-1970)

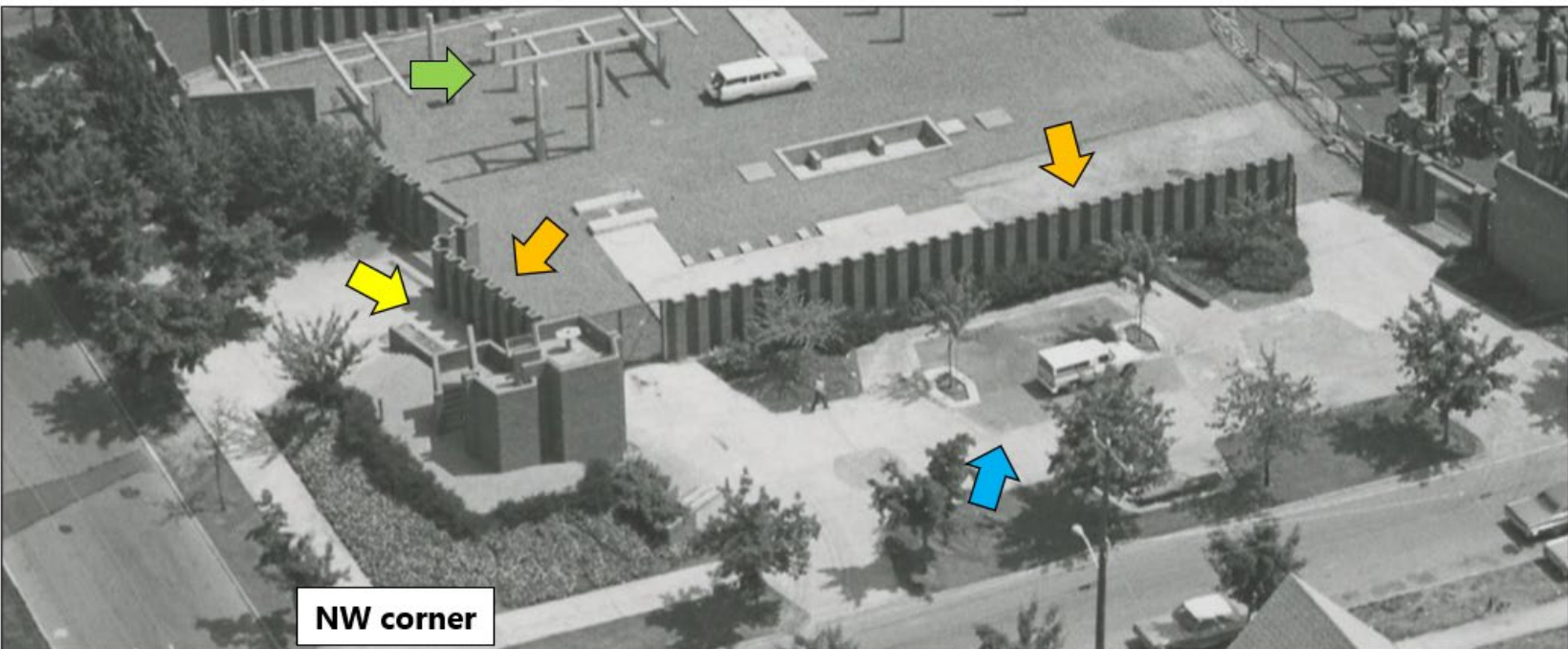
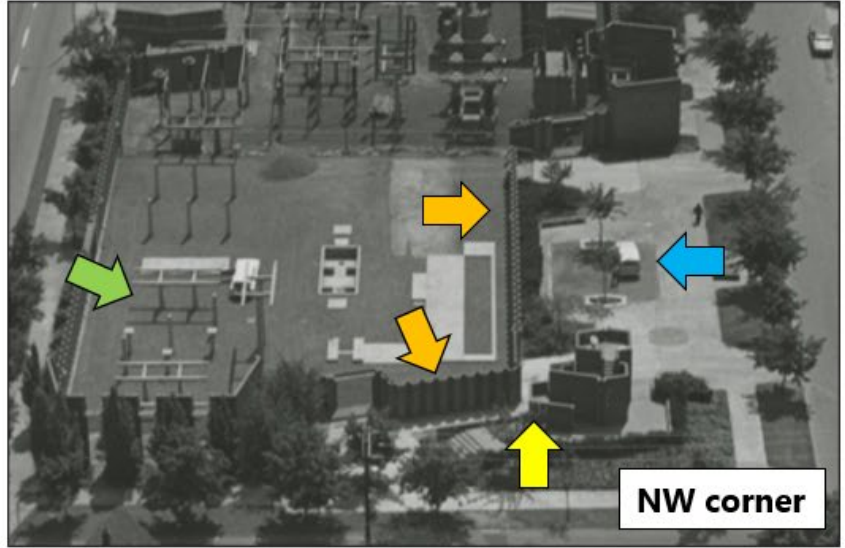
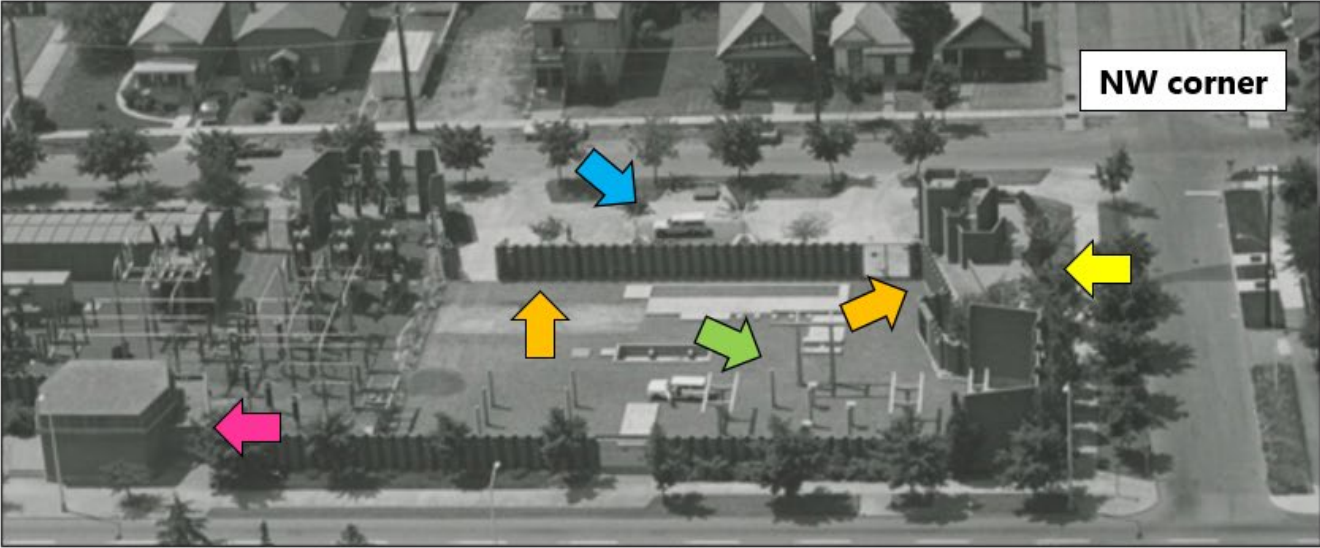







West side of substation, NE view showing tower separate from substation. SMA 19554 (1967-1970)



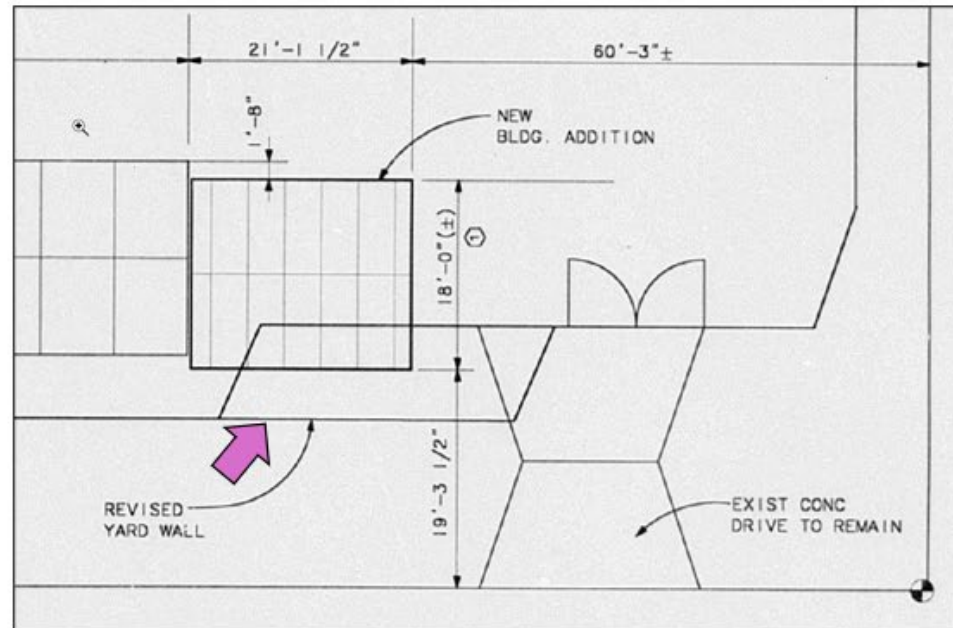
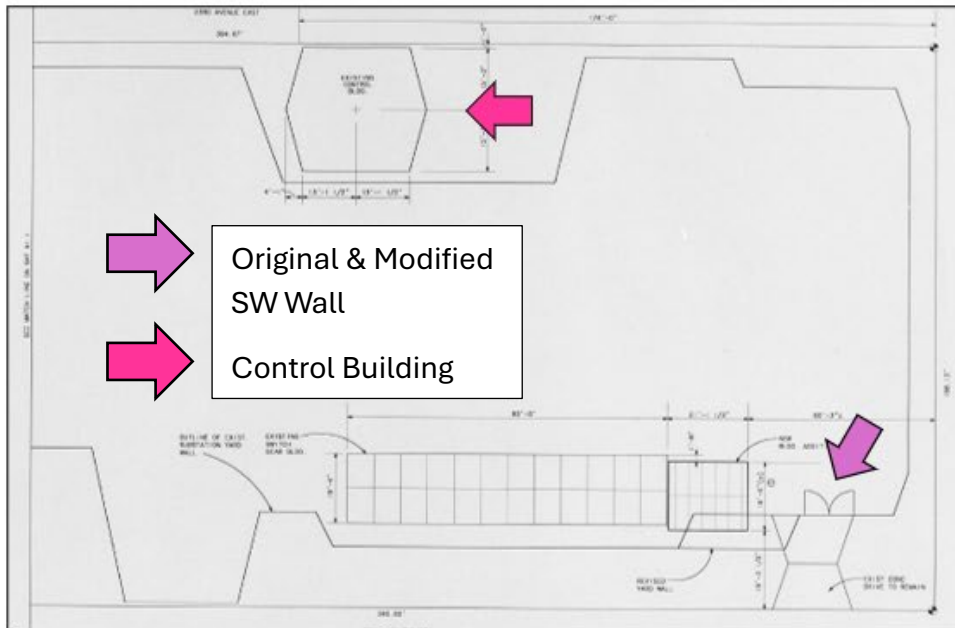
Interior (east elev) view of west substation wall, facing south SMA 198658 (May 1969)

July 1975



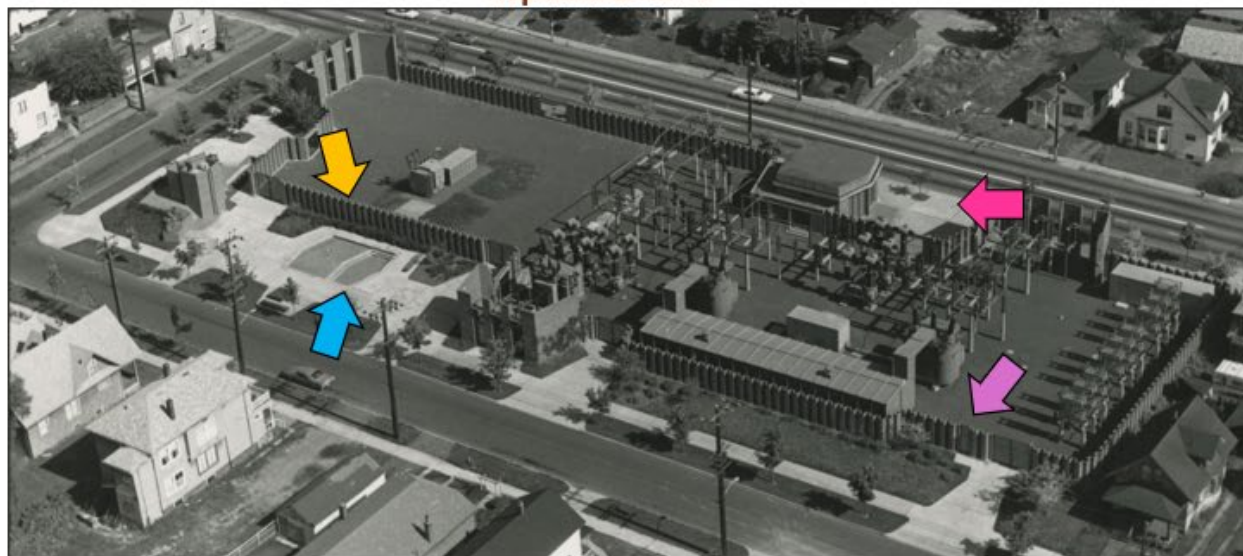
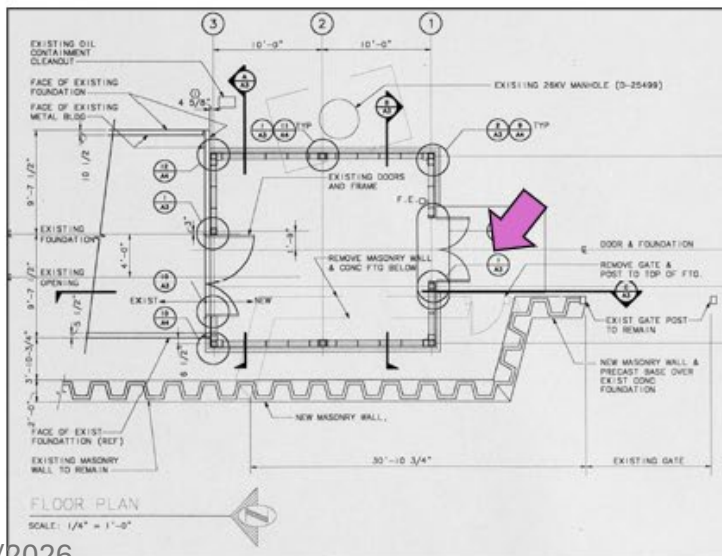
-  NW Original Corrugated Brick Wall
-  Original Walkway between Substation and Observation Tower
-  Substation Yard
-  Control Building
-  Original Playground Area

November 1994

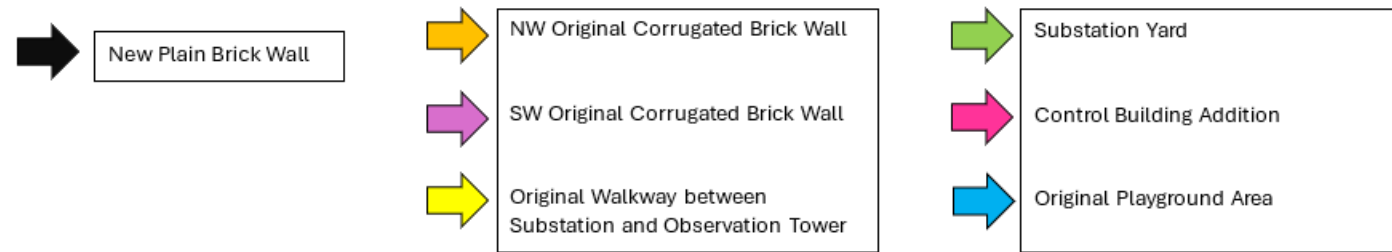
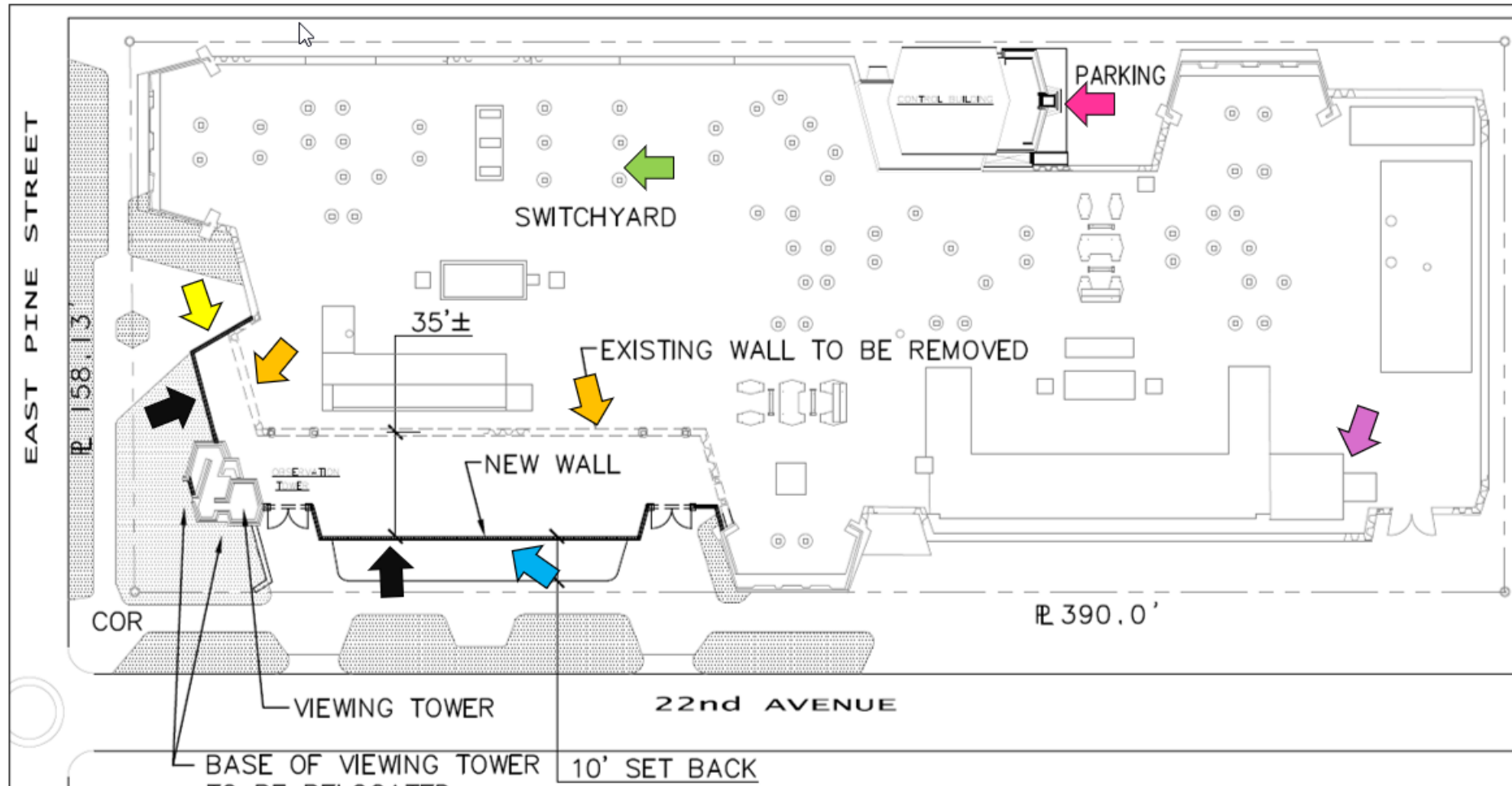


D-31149, and D-31152

September 1970

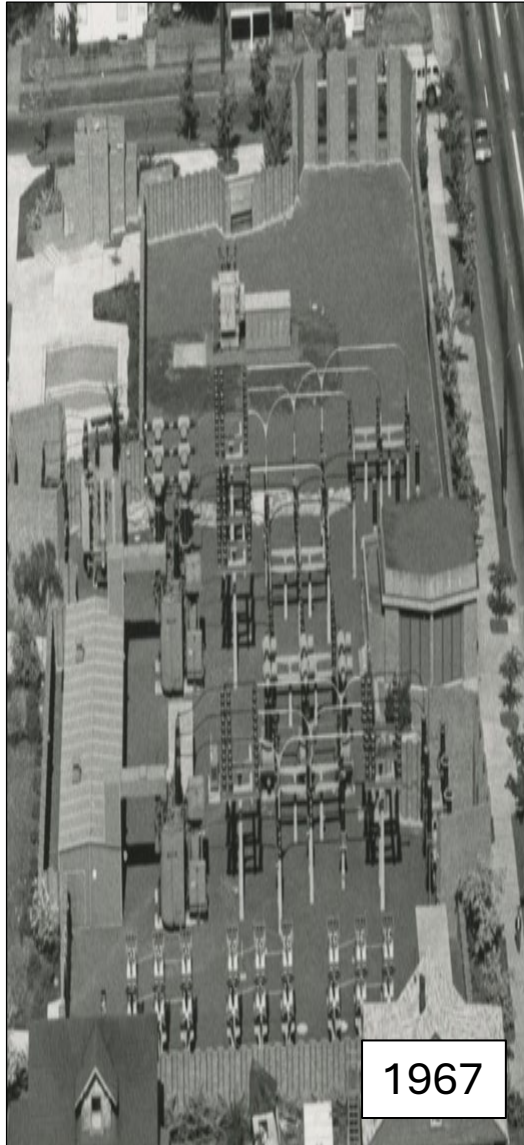


November 2002



D-34215 (2002), Specification #3437-38.

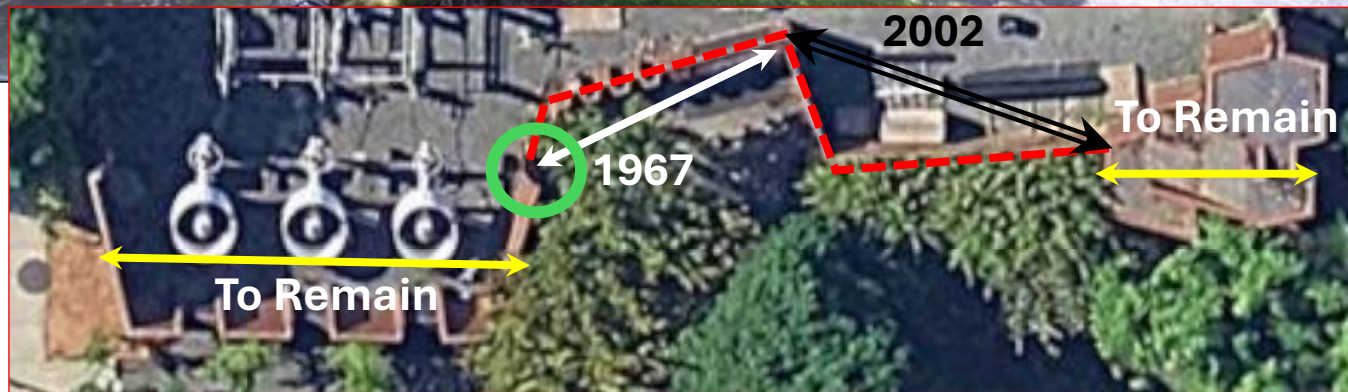
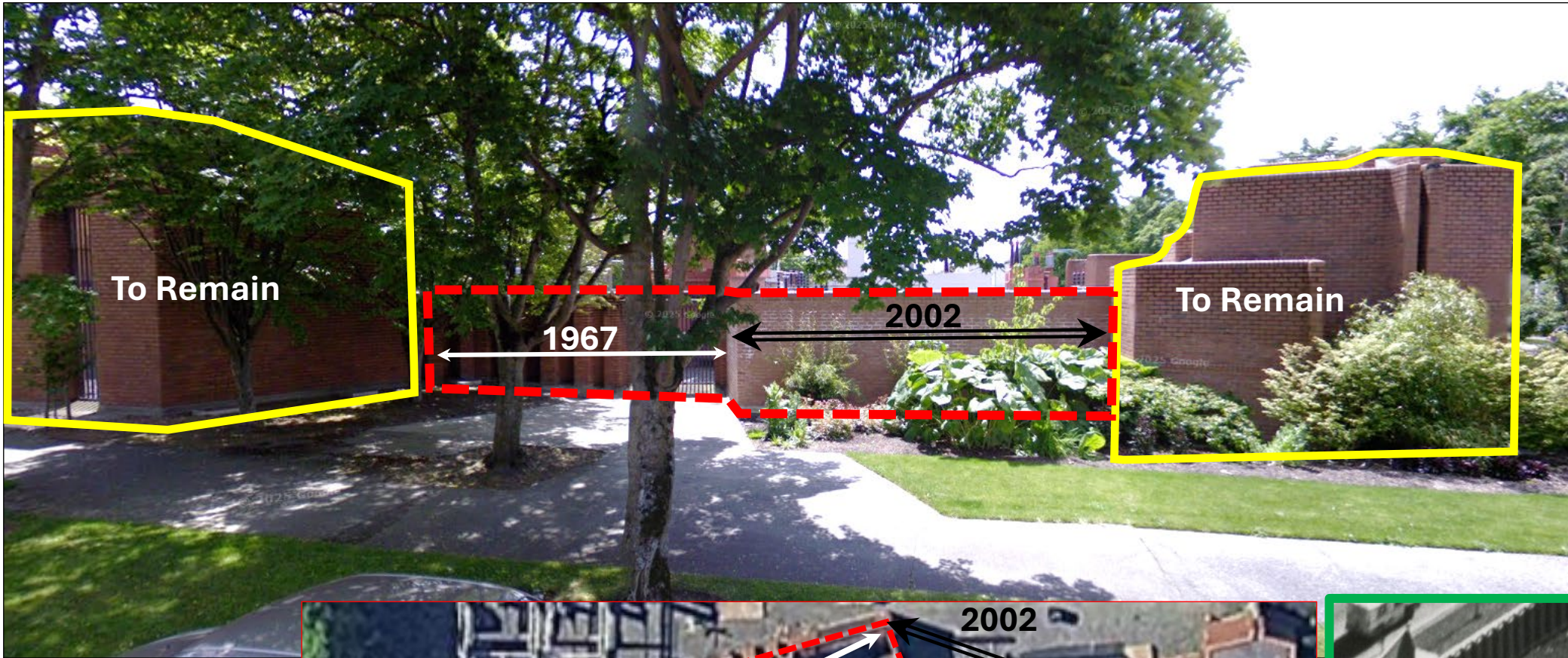
Aerial Views – 1967, 2002, 2007, and 2024



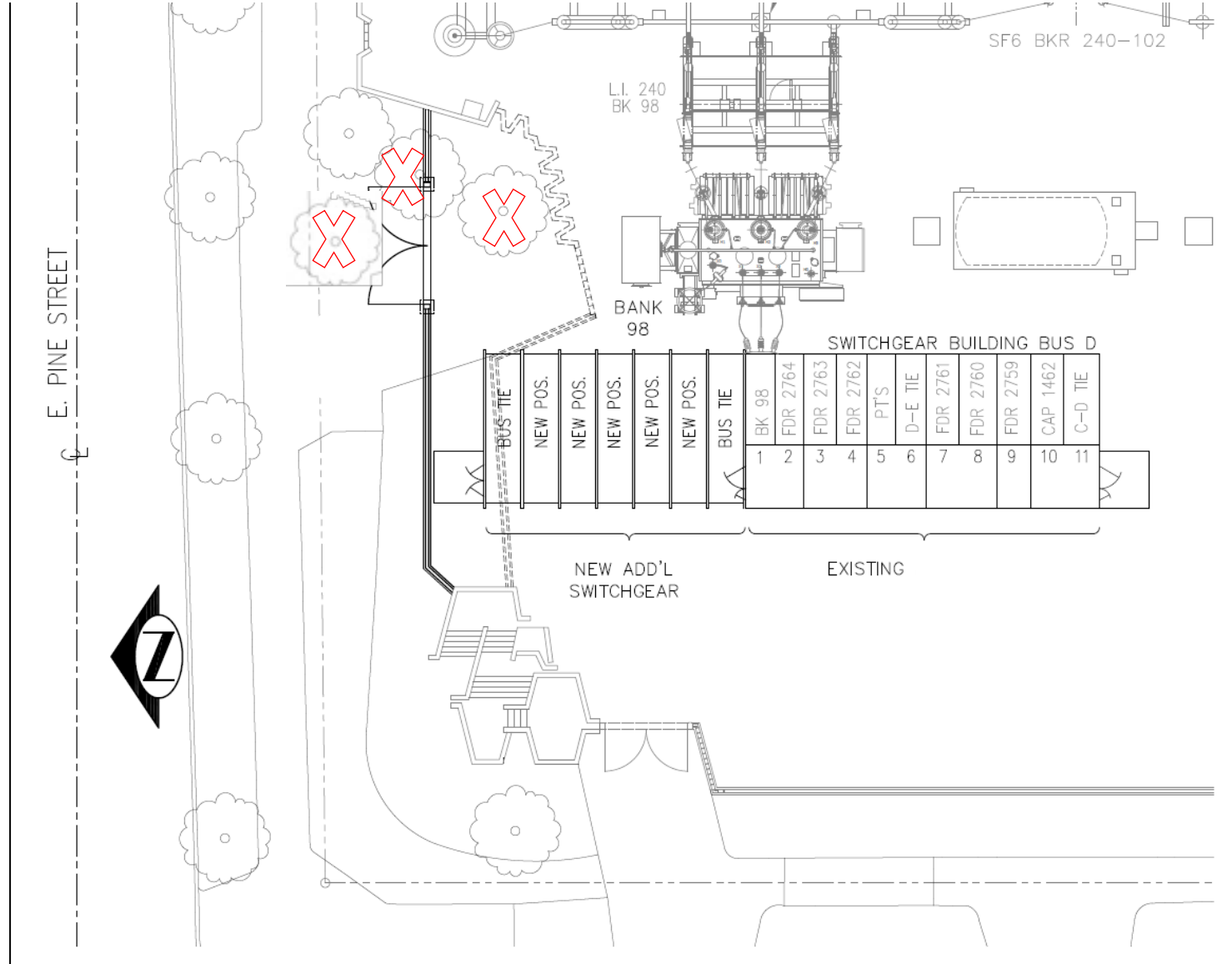
3/26/2026



25



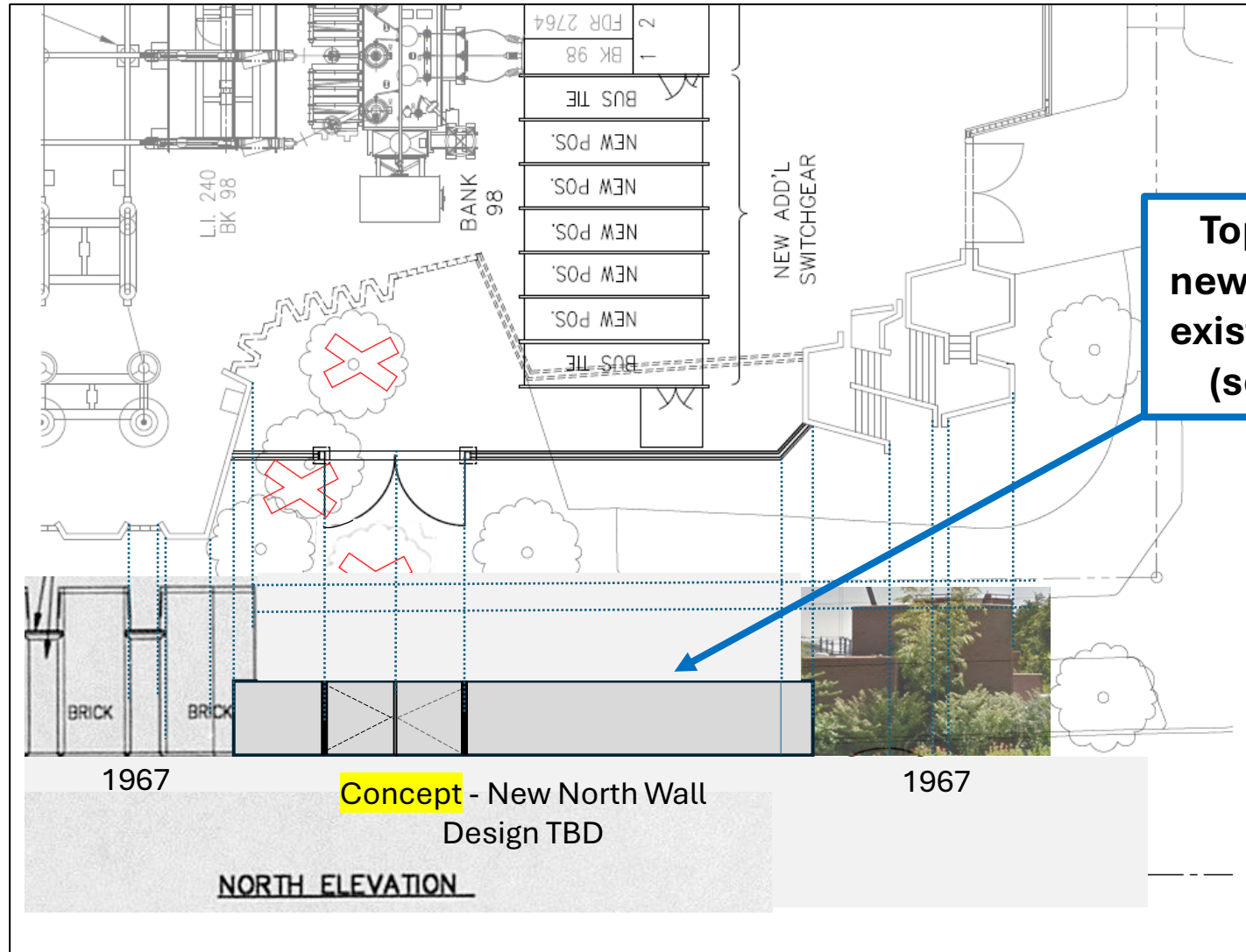
Plan View – Proposed New North Wall



Plan View with **Conceptual** Elevation for Proposed New North Wall

(*) Proposed new wall currently shown is for location, height, and general footprint only.

The application for the Certificate of Approval for Final Design will explore alternatives that are responsive to the original design of the corrugated brick wall construction/configuration.



Top of proposed new wall* to match existing wall height (see next slide)



**Top of proposed
new wall to match
existing wall height**

Questions?

Thank you!



Seattle City Light

WE POWER SEATTLE