

Pioneer Square Clinic Decorative Gate

Seattle Indian Health Board



Geometric Design

For concept, John Pepion's Sweetgrass piece created for the SIHB Clinic. Braided sweetgrass is the inspiration behind the geometric expression of elements.



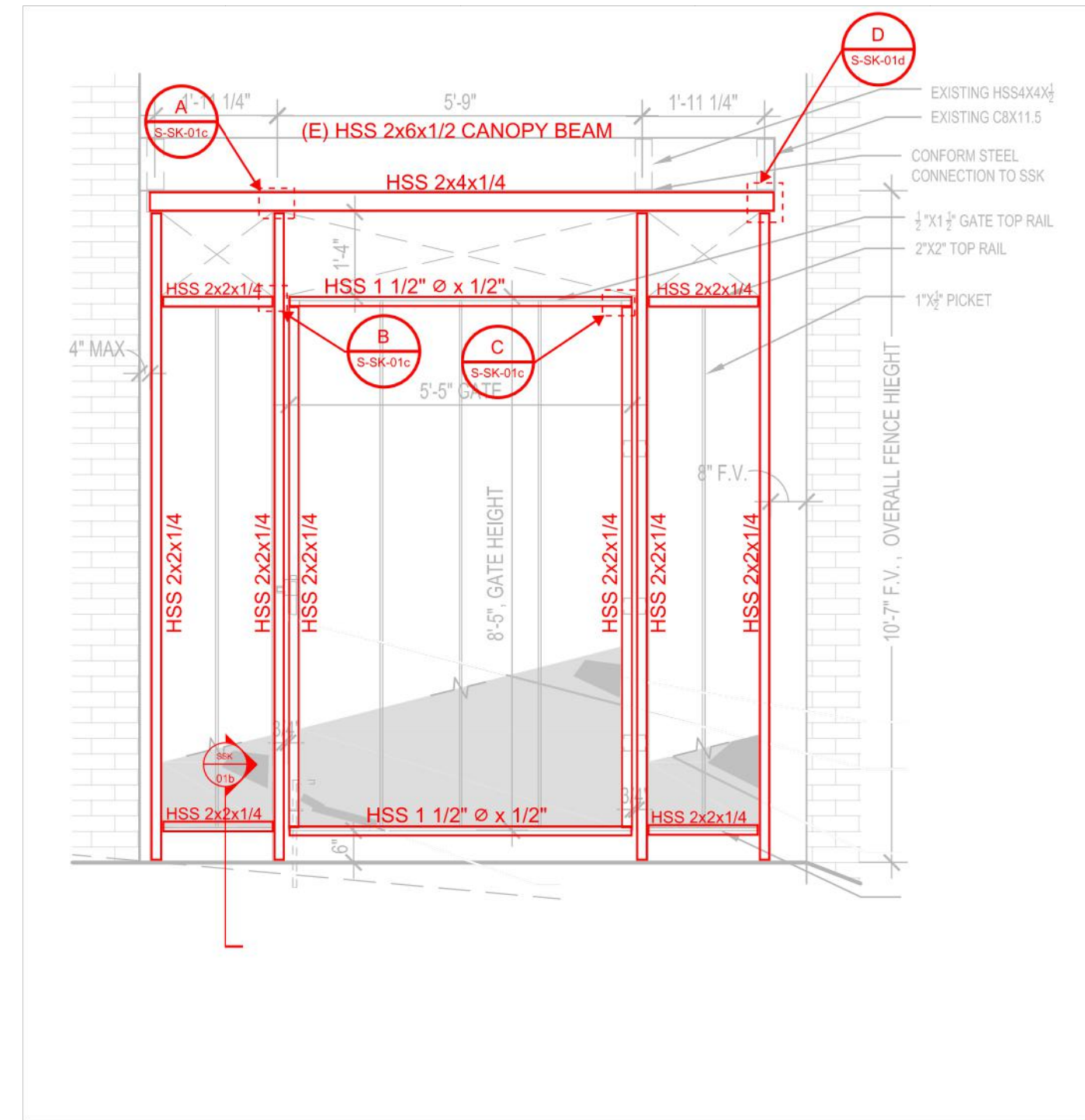
Construction Design


Geometric Design

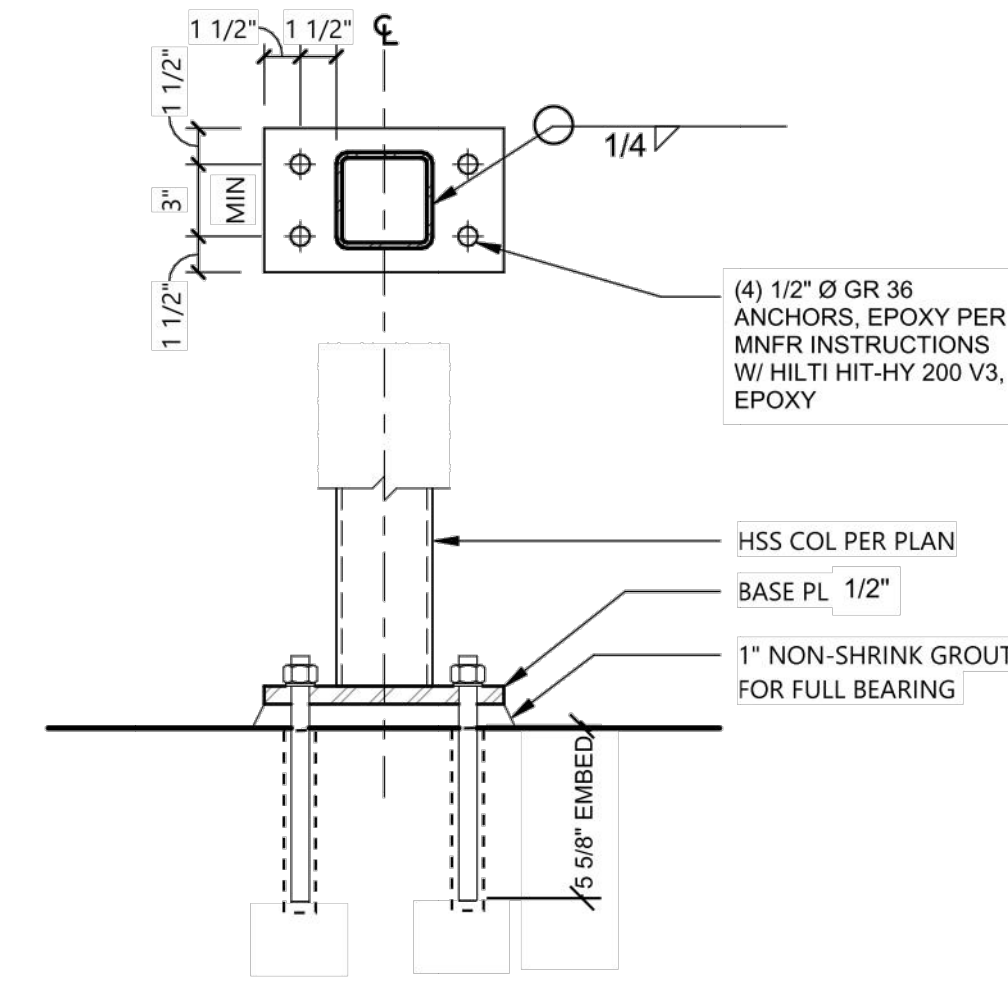
Full geometric design crosses the door and elements are on the side panels. The Seattle Indian Health Board logo and acronym fit symmetrically at head height. The intent of the security gate is to be secured open with locking cane bolt during hours of operation. The only situation where the gate will be operated is the opening and closing of the facility.


*In this mockup the black is metal and the white is cut out or etched, refer to plans

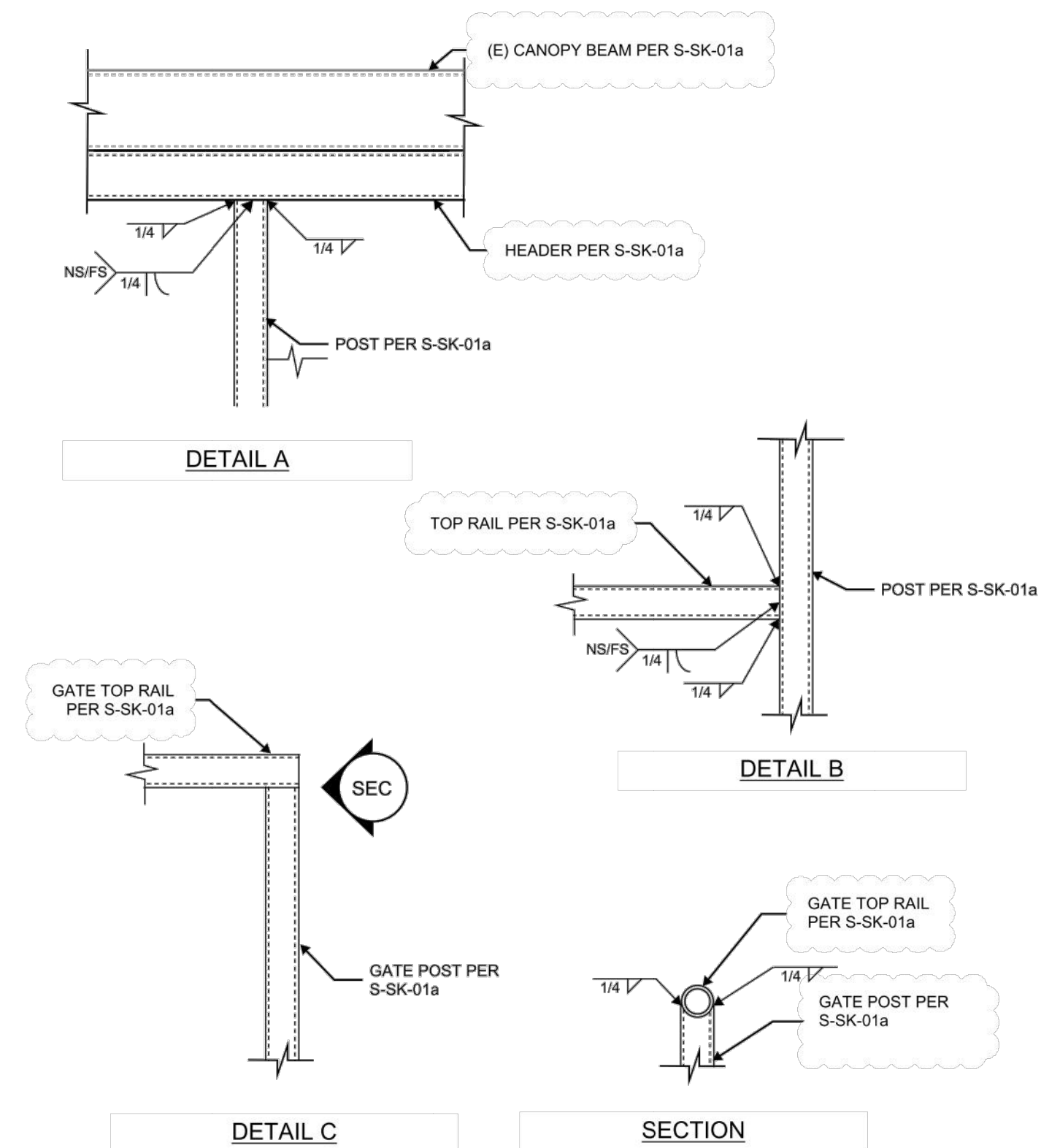





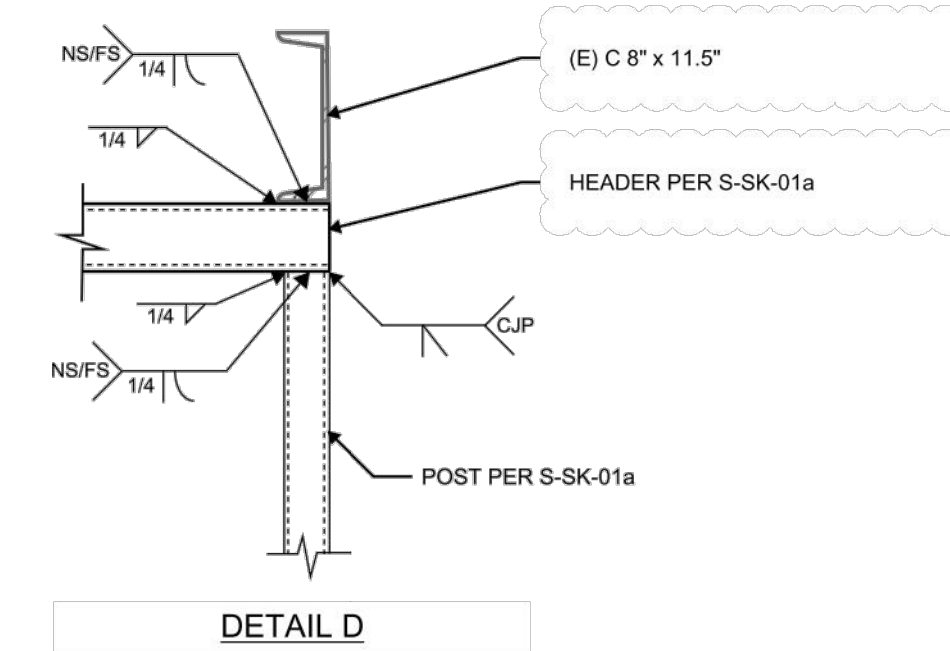

 Project: SIHB SECURITY GATE
 Project No. 22-180-01 Date: _____
 Reference: 19-015-01/S211 Scale: NTS **S-SK-01a**





 Project: SIHB SECURITY GATE
 BASEPLATE CONNECTION
 Project No. 22-180-01 Date: _____
 Reference: 19-015-01/S211 Scale: NTS **S-SK-01b**




 Project: SIHB SECURITY GATE
 DETAILS
 Project No. 22-180-01 Date: _____
 Reference: 19-015-01/S211 Scale: NTS **S-SK-01c**




 Project: SIHB SECURITY GATE
 DETAILS
 Project No. 22-180-01 Date: _____
 Reference: 19-015-01/S211 Scale: NTS **S-SK-01d**

SIHB CLINIC	
2ND AVENUE PUBLIC ACCESS SECURITY GATE	
Date: 01/25/2023	JONES ■ JONES <small>ARCHITECTS LANDSCAPE ARCHITECTS PLANNERS</small>
Scale: As Noted	
Sht Ref: N/A	
Doc Ref: N/A	
Sketch No:	S1

099100 - Exterior Finishes

3.8 B. - Ferrous Metals; HM Doors and Frames

SPOT PRIME (2 Coats): B66W01310 - Pro Industrial Pro-Cryl Universal Metal Primer
EXT METAL: Acrolon 218 HS SG - to match BM 2131-10 Black Satin

EXISTING



PT



FONT SAMPLE AS SHOWN ON PLANS

FONT FINISH SAMPLE
ETCHED SURFACE PAINTED WHITE

STEEL PLATE PAINTED BLACK TO MATCH

SAMPLE IMAGE
NOT FOR CONSTRUCTION



MEMORANDUM

DATE 7 February 2023

PROJECT NAME SIHB Artwork and Security Gate

ARCHITECT CONTACT Mario Campos
mmcampos@jonesandjones.com

PIONEER SQUARE PRESERVATION BOARD - APPLICATION CORRECTIONS 01

No	Item	Response
01.	It appears that the solid nature of the gate head height (between 3' and 6' aff) will block transparency for people coming and going from a CPTED point of view, potentially creating a safety issue. Have you considered this issue?	01. The intent of the security gate is to be secured open with locking cane bolt during hours of operation. The only situation where the gate will be operated is the opening and closing of the facility. We can provide an alternate design to create transparency if required.
02.	Have you considered an alternative that has a more transparent material behind this sign portion that allows people to assess the safety outside the gate when leaving?	02. We can provide an alternate design to create transparency dependent on PSPB response of Comment No 01.
03.	I am assuming that this is an alternative that was considered but the other design is the option being put forward for approval. If that is not the case, please clarify where and how this is incorporated into the design proposal.	03. That is a correct assumption, please see Plan Set_SIHB - 2nd ave security gate 20230207 Corrections 01 for a copy showing only the final design to reduce any confusion.
04.	Please provide finishes, materials and color samples for the material used for the sign. Alternatively provide a photo of a similar sign.	04. Please see Material Samples_SIHB - 2nd ave security gate 20230207 Corrections 01
05.	Please provide finishes, materials, and color samples for the signs or alternatively a photo of a similar sign. Particularity for this option, you may want to show how the sign contrasts with the dark color of the existing metal it is attached to.	05. Please see Material Samples_SIHB - 2nd ave security gate 20230207 Corrections 01
06.	Clarification if the hanging blade sign option is just one sign but two sided?	06. Hanging blade option is two sided

Attachment:

Plan Set_SIHB - 2nd ave security gate 20230207 Corrections 01
Material Samples_SIHB - 2nd ave security gate 20230207 Corrections 01