

**FOREST  
FOR THE  
TREES**

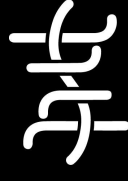
Pioneer Square Art Frames Project  
Scientific Building  
126 S Jackson Street

AT ITS CORE, THE EXTERIOR FRAMED PANELS ARE DESIGNED TO USE ART AS A CATALYST FOR PUBLIC ACTIVATION, SPARKING INTEREST AND PARTICIPATION IN LARGER NEIGHBORHOOD INITIATIVES. EACH FRAME DISPLAYS AN ARRAY OF ARTWORKS FROM LOCAL & VISITING ARTISTS CREATED IN SITU, REPRESENTING A RANGE OF STYLES AND MEDIUMS THAT EMBODY THE DIVERSE SPIRIT OF PIONEER SQUARE. THE ARTWORKS ARE ROTATED PERIODICALLY, OFFERING A FRESH AND DYNAMIC VISUAL EXPERIENCE TO ALL WHO VISIT.

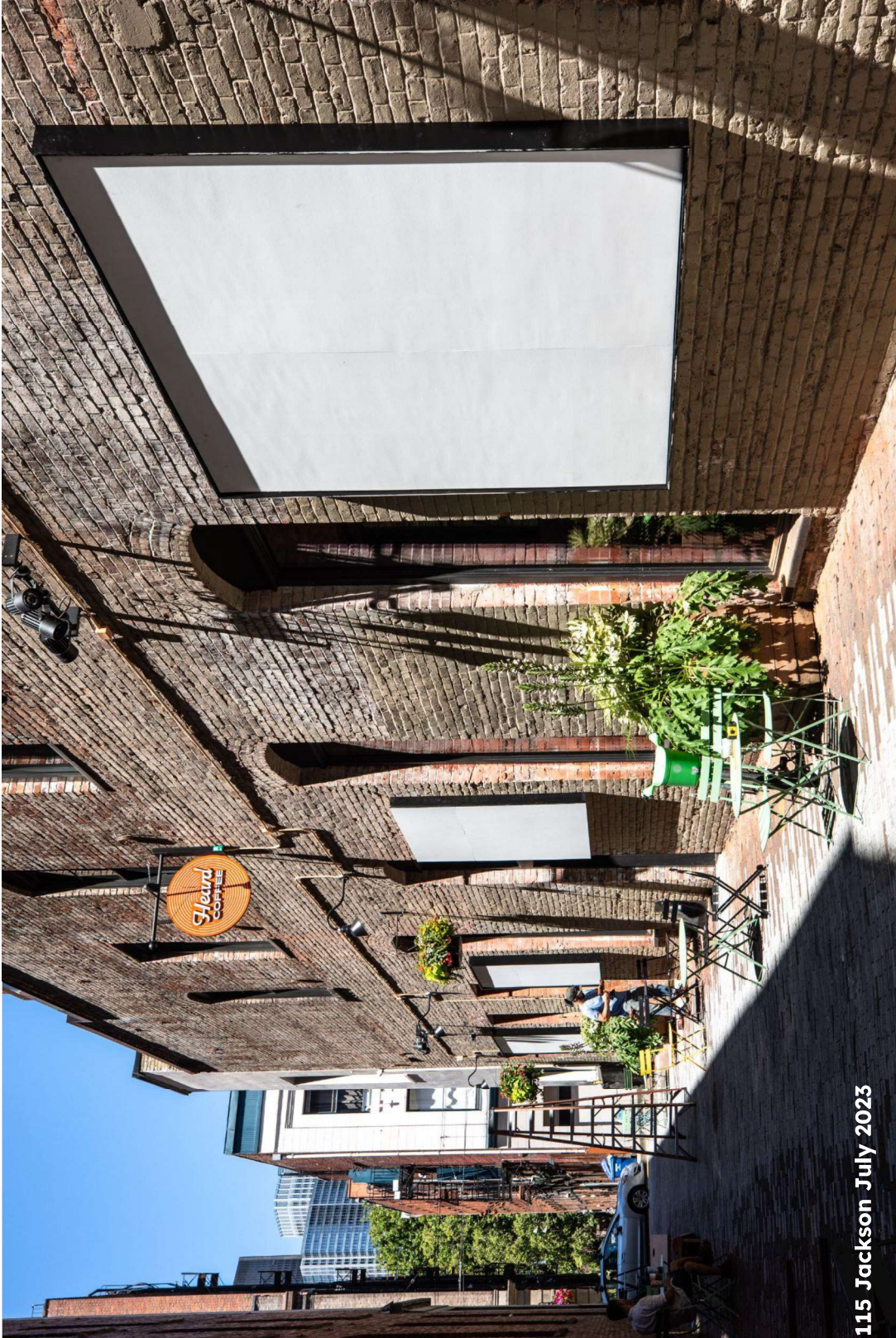
BY INTEGRATING ARTISTS WORKING IN OPEN AIR INTO THE FABRIC OF DAILY LIFE IN PIONEER SQUARE, THE PROGRAM INSPIRES DIALOGUE, BRINGS PEOPLE TOGETHER, AND CONTRIBUTES TO THE CULTURAL VIBRANCY OF THIS HISTORIC DISTRICT. THE PROJECT AIMS TO BRING A WORLD CLASS ART EXPERIENCE TO THE STREETS OF PIONEER SQUARE, WHILE STILL MAINTAINING THE HISTORIC INTEGRITY OF THE BUILDINGS THEMSELVES.

FOREST FOR THE TREES IS REQUESTING A CERTIFICATE OF APPROVAL FROM THE PIONEER SQUARE HISTORIC PRESERVATION BOARD FOR THE CONSTRUCTION AND INSTALLATION OF THE ART FRAMES FOLLOWING THE MEETING ON JUNE 26TH, 2024.

THE GOAL OF THE PROGRAM IS TO HAVE THE FIRST ITERATION ARTWORK INSTALLED FOR SEATTLE ART FAIR IN LATE JULY. FOLLOWING APPROVAL, PROPOSED ARTWORK WILL BE SUBMITTED TO THE PIONEER SQUARE HISTORIC BOARD TO BE APPROVED ADMINISTRATIVELY VIA THE PIONEER SQUARE HISTORIC BOARD COORDINATOR.

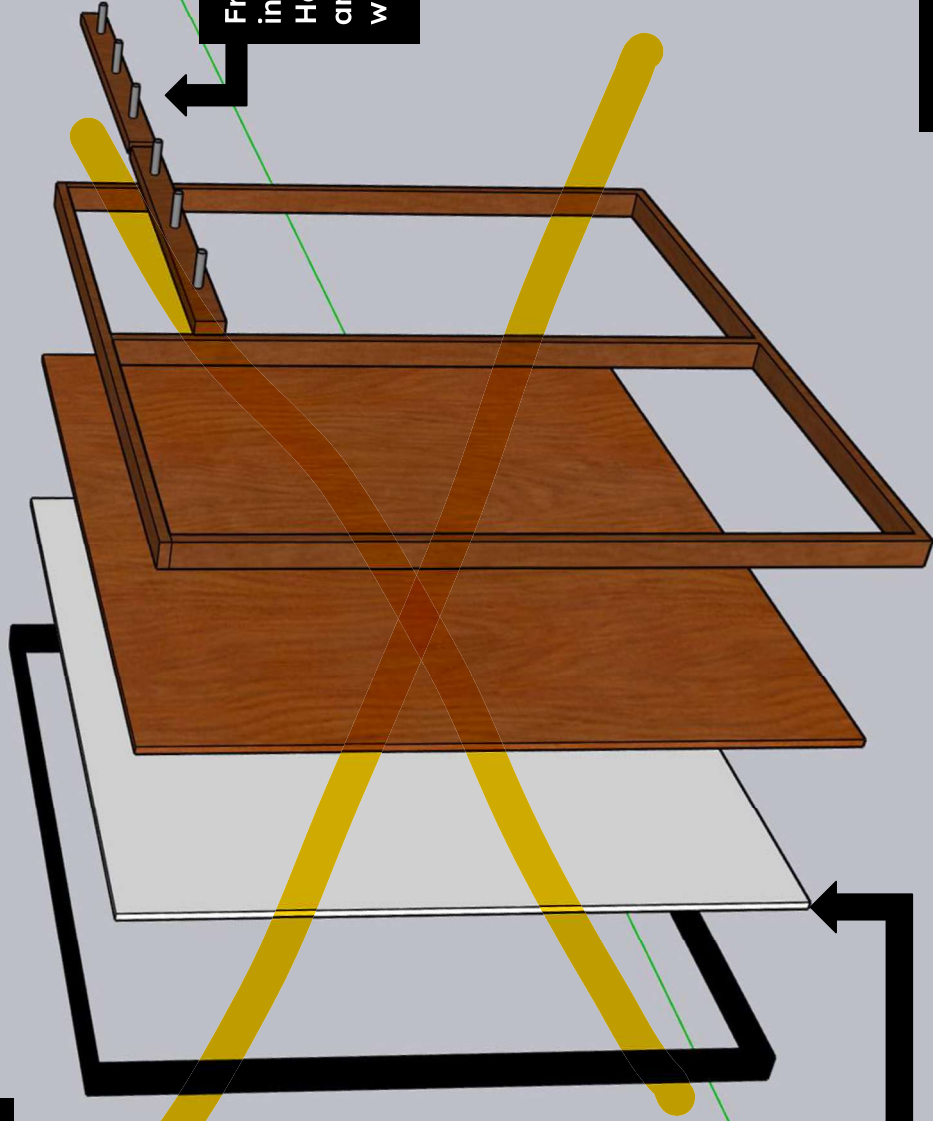


art



Frames installed at 115 Jackson July 2023

# Installation Method



Frames are anchored into mortar of the brick. Holes are pre drilled and anchors are set with epoxy

Framed Exterior MDO made removable for rotating artwork or repairs

MULTI LAYERED EXTERIOR GRADE PLYWOOD CONSTRUCTION



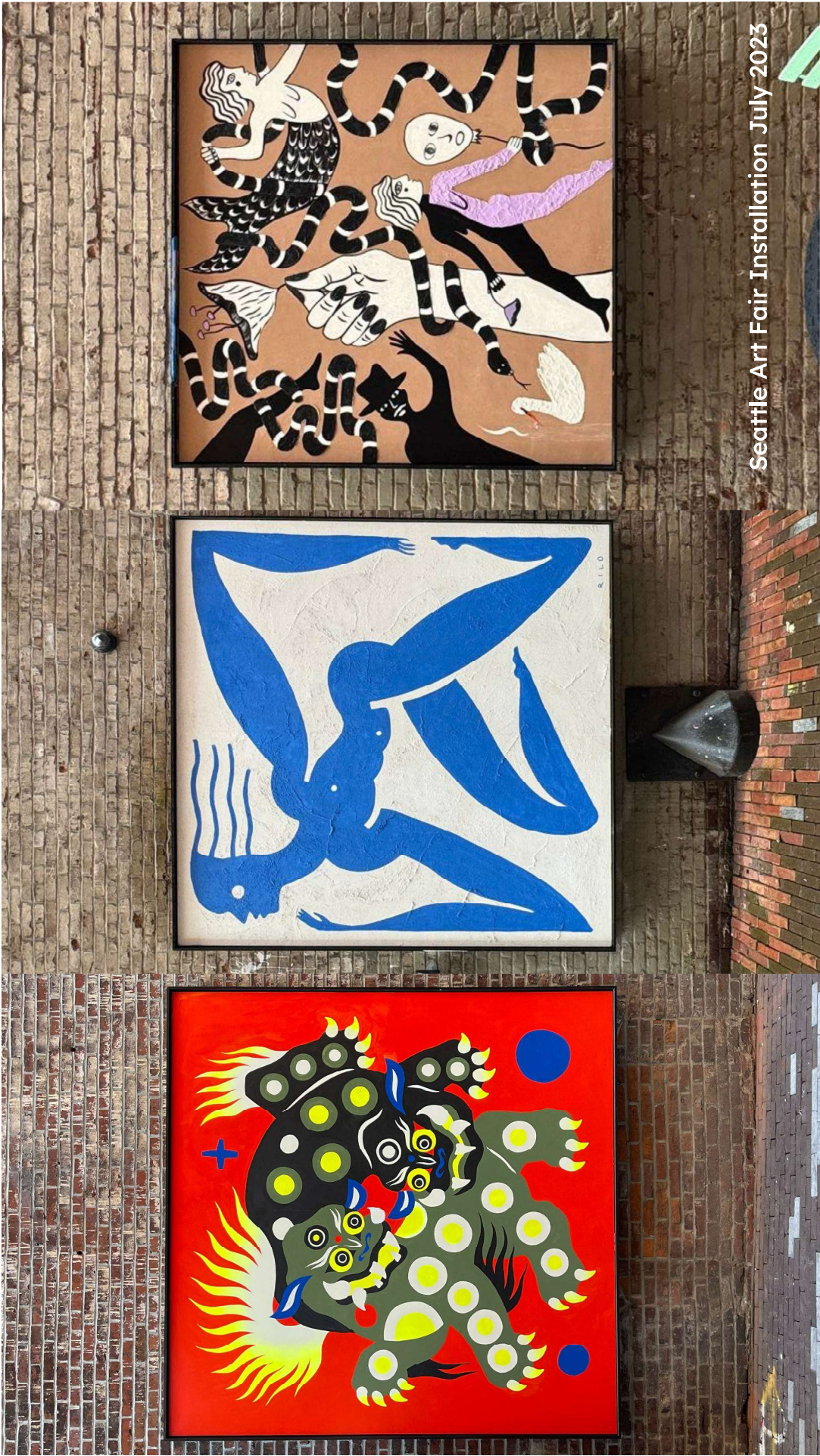
## INSTALLATION DETAILS

### EXTERIOR FRAMED PANELS

- Four Anchor Points pre drilled into mortar of brick and set with epoxy.
- Sized based on available surface area by location. (See slide 11 for sizing)
  - 10 x 10 FT
  - 8 x 8 FT
  - 6 x 6 FT

### General Guidelines

- Not to be used as signage or advertisement for brand or business.
- 5 year commitments from Landlords to “host” frames. Extension to be considered depending on success of the program.
- If frames are removed, the four anchor points in mortar are to be filled to prevent further damage to brick.



Seattle Art Fair Installation July 2023



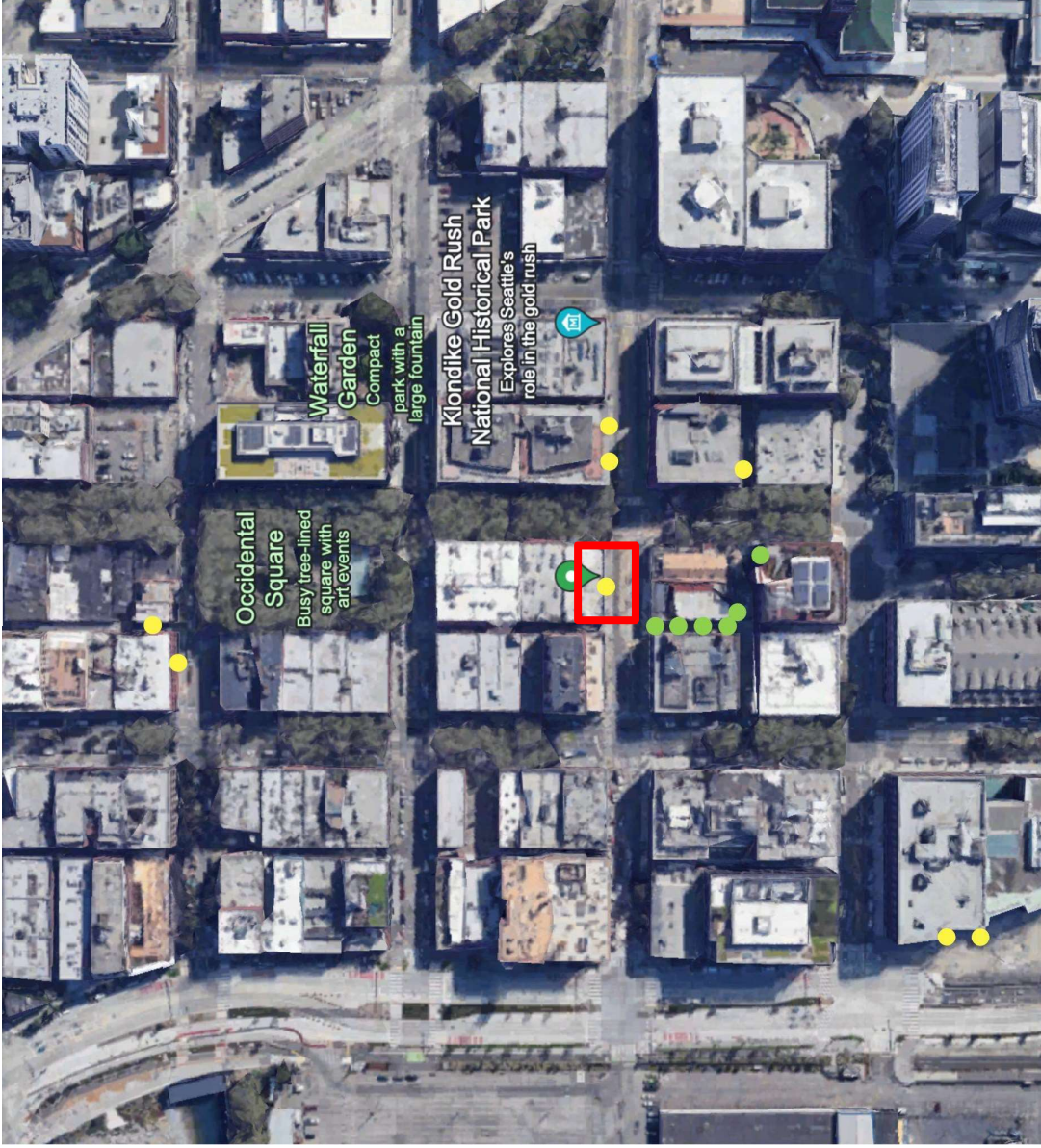
MLB All Star Week  
Installation



MLB All Star Week  
Installation



SW 7069  
**Iron Ore**



Existing Frames (Approved 7/23)



Site Proposed



Neighboring site (proposed separately)



Seattle, Washington

Google Street View

See more dates

© 2023 Google

© 2023 Google

Elm Street

Rte 9



126 S Jackson

