



***FOREST  
FOR THE  
TREES***

Pioneer Square Art Frames Project  
Burke State Building  
322 Occidental Ave S

**AT ITS CORE, THE EXTERIOR FRAMED PANELS ARE DESIGNED TO USE ART AS A CATALYST FOR PUBLIC ACTIVATION, SPARKING INTEREST AND PARTICIPATION IN LARGER NEIGHBORHOOD INITIATIVES. EACH FRAME DISPLAYS AN ARRAY OF ARTWORKS FROM LOCAL & VISITING ARTISTS CREATED IN SITU, REPRESENTING A RANGE OF STYLES AND MEDIUMS THAT EMBODY THE DIVERSE SPIRIT OF PIONEER SQUARE. THE ARTWORKS ARE ROTATED PERIODICALLY, OFFERING A FRESH AND DYNAMIC VISUAL EXPERIENCE TO ALL WHO VISIT.**

**BY INTEGRATING ARTISTS WORKING IN OPEN AIR INTO THE FABRIC OF DAILY LIFE IN PIONEER SQUARE, THE PROGRAM INSPIRES DIALOGUE, BRINGS PEOPLE TOGETHER, AND CONTRIBUTES TO THE CULTURAL VIBRANCY OF THIS HISTORIC DISTRICT. THE PROJECT AIMS TO BRING A WORLD CLASS ART EXPERIENCE TO THE STREETS OF PIONEER SQUARE, WHILE STILL MAINTAINING THE HISTORIC INTEGRITY OF THE BUILDINGS THEMSELVES.**

**FOREST FOR THE TREES IS REQUESTING A CERTIFICATE OF APPROVAL FROM THE PIONEER SQUARE HISTORIC PRESERVATION BOARD FOR THE CONSTRUCTION AND INSTALLATION OF THE ART FRAMES FOLLOWING THE MEETING ON JUNE 26TH, 2024.**

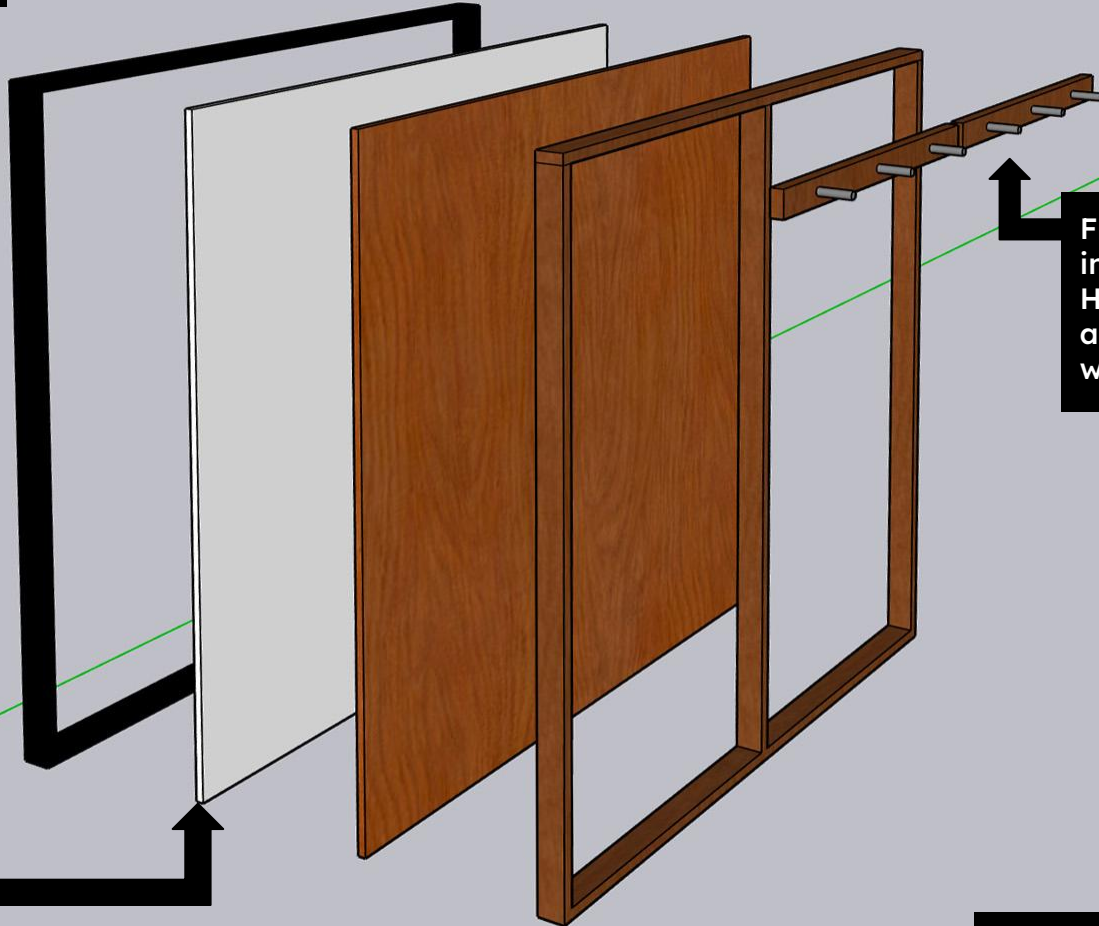
**THE GOAL OF THE PROGRAM IS TO HAVE THE FIRST ITERATION ARTWORK INSTALLED FOR SEATTLE ART FAIR IN LATE JULY. FOLLOWING APPROVAL, PROPOSED ARTWORK WILL BE SUBMITTED TO THE PIONEER SQUARE HISTORIC BOARD TO BE APPROVED ADMINISTRATIVELY VIA THE PIONEER SQUARE HISTORIC BOARD COORDINATOR.**





Frames installed at 115 Jackson July 2023

# Installation Method



Framed Exterior MDO  
made removable for  
rotating artwork or  
repairs

Frames are anchored  
into mortar of the brick.  
Holes are pre drilled  
and anchors are set  
with epoxy

MULTI LAYERED EXTERIOR GRADE  
PLYWOOD CONSTRUCTION





## INSTALLATION DETAILS

### EXTERIOR FRAMED PANELS

- Four Anchor Points pre drilled into mortar of brick and set with epoxy.
- Sized based on available surface area by location. (See slide 11 for sizing)
  - 10 x 10 FT
  - 8 x 8 FT
  - 6 x 6 FT

### General Guidelines

- Not to be used as signage or advertisement for brand or business.
- 5 year commitments from Landlords to “host” frames. Extension to be considered depending on success of the program.
- If frames are removed, the four anchor points in mortar are to be filled to prevent further damage to brick.





Seattle Art Fair Installation July 2023





MLB All Star Week  
Installation

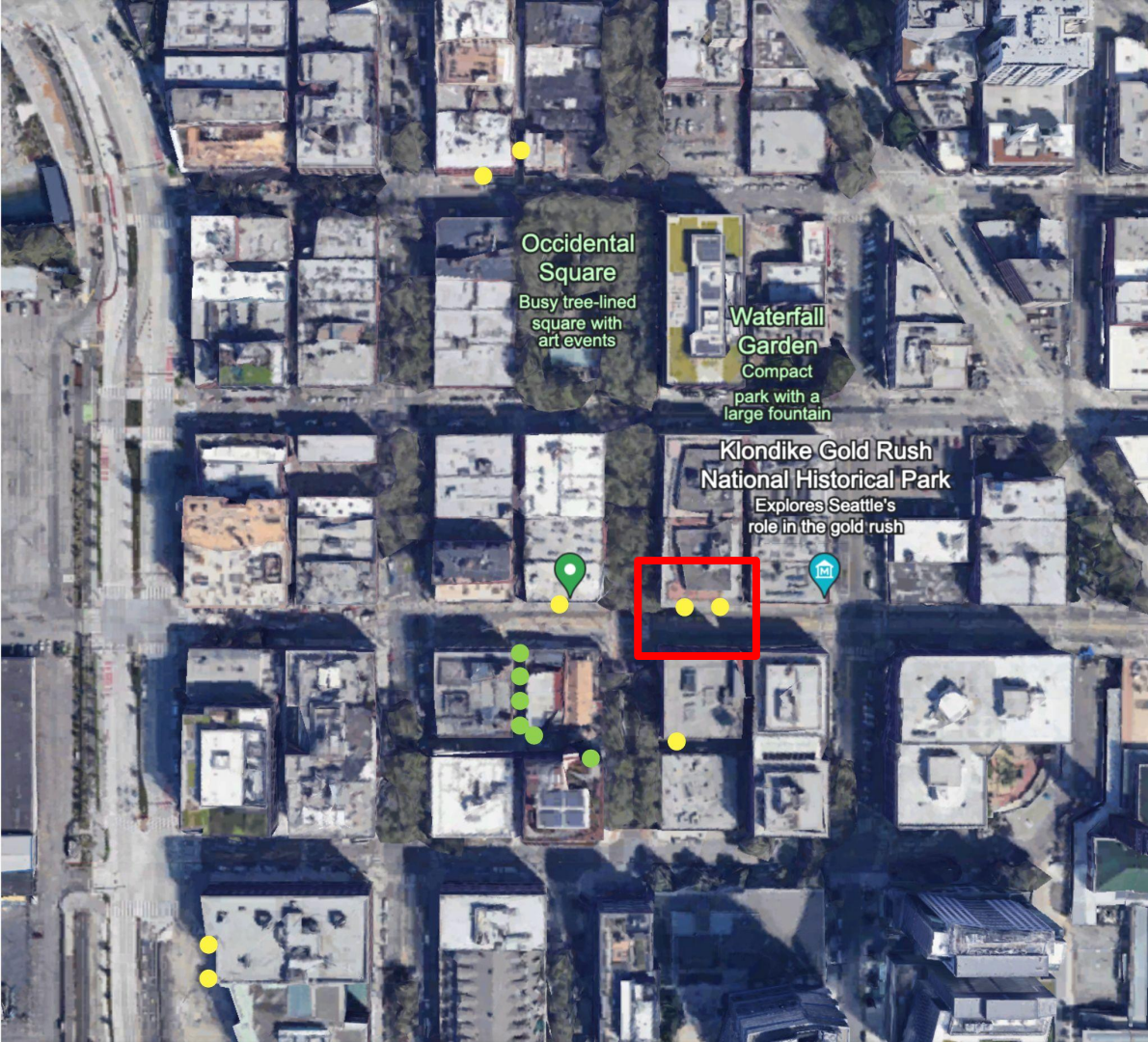







MLB All Star Week  
Installation



SW 7069  
**Iron Ore**



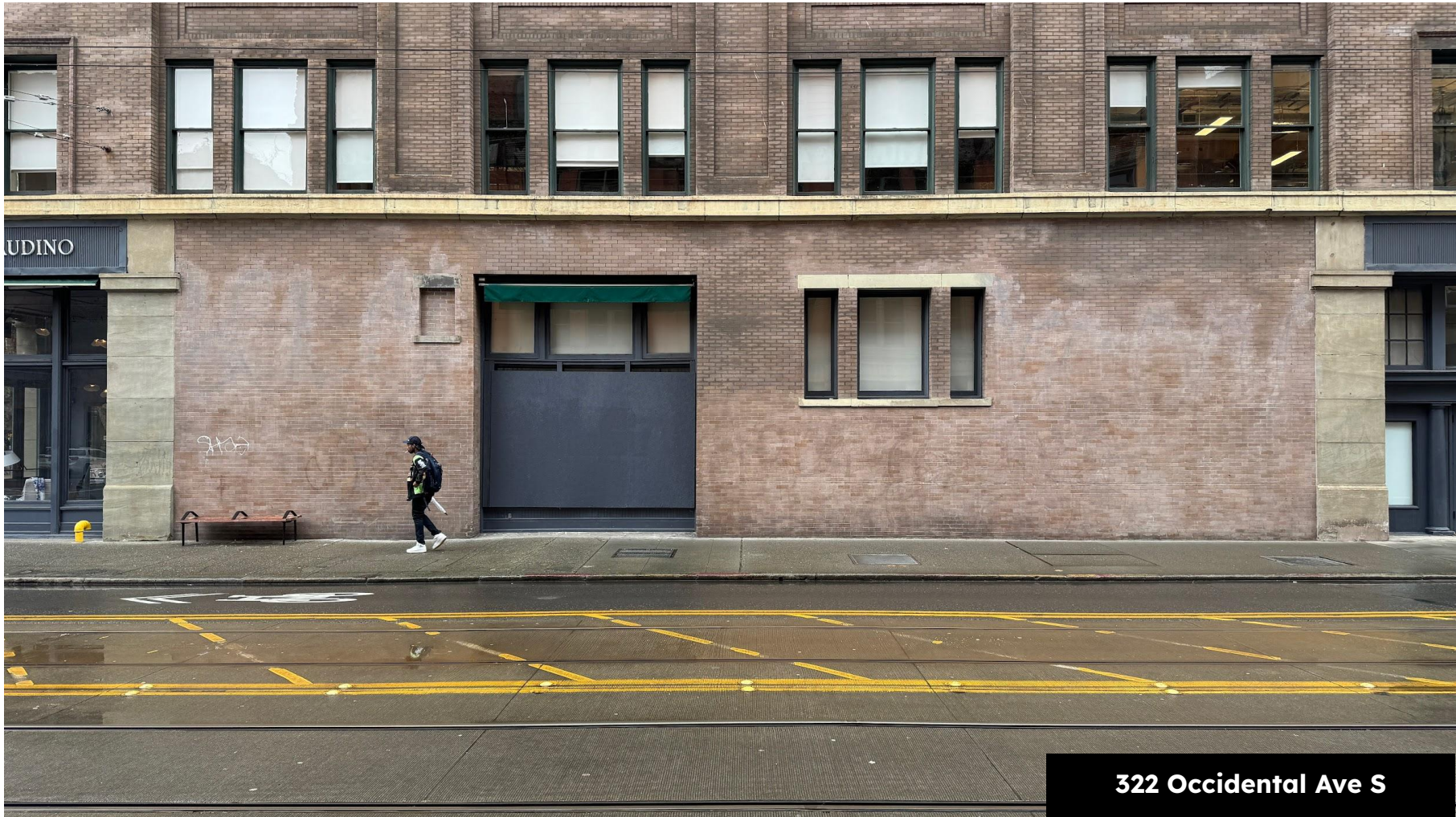
-  Existing Frames (Approved 7/23)
-  Site Proposed
-  Neighboring site (proposed separately)

Occidental Square  
Busy tree-lined square with art events

Waterfall Garden  
Compact park with a large fountain

Klondike Gold Rush National Historical Park  
Explores Seattle's role in the gold rush





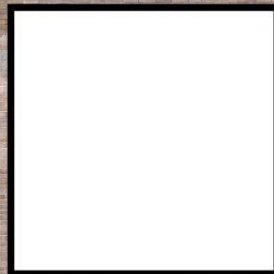
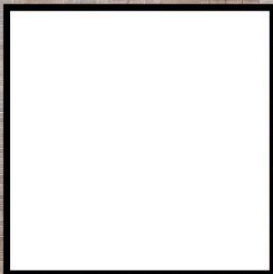
UDINO

9135

322 Occidental Ave S



UDINO



322 Occidental Ave S







