

Sign 2 Location



1541 S. 92nd Place, # B, Seattle, WA 98108  
P: (206) 282-0700  
nationalsigncorp.com

**JOB INFORMATION:**  
Slalom INC

**REPRESENTATIVE:**  
Tim Z

**DESIGNER:**  
Pushkar P

**DATE:**  
10/16/23

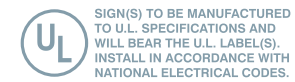
**REVISION:**

1	
2	
3	
4	
5	
6	
7	
8	
9	

**REVIEWED BY:**

C	00/00/00	Version #
S	00/00/00	Version #
P	00/00/00	Version #

This is an original unpublished drawing, created by National Sign Corporation. It is not to be shown to anyone outside your organization, or to be used, reproduced, copied or exhibited in any fashion. Any usage beyond that granted to buyer herein shall require the separate payment of a design and engineering fee to National Sign Corporation.



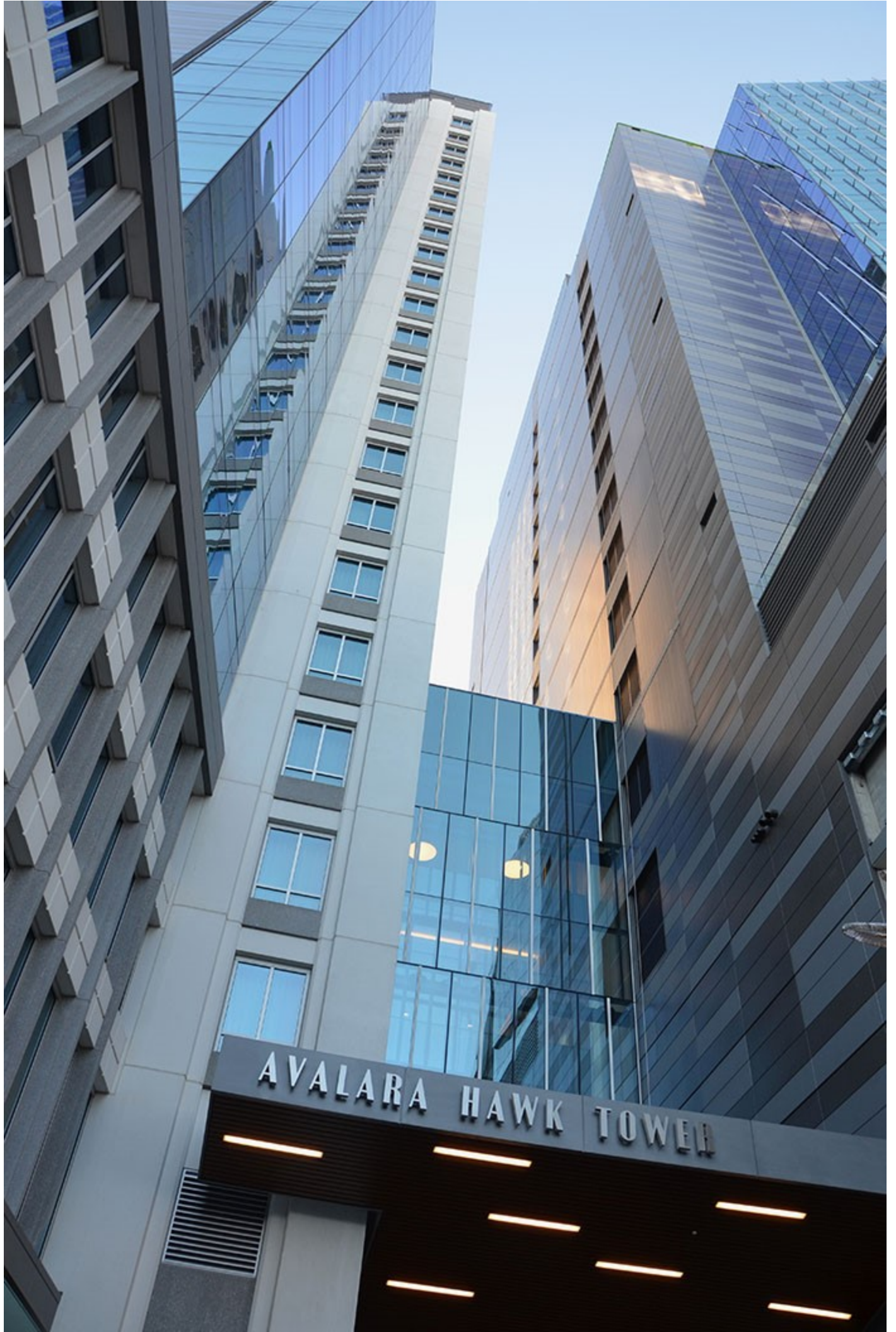
**SCALE:**

**DESIGN NUMBER:**  
00281 V3

**JOB NUMBER:**  
00000

**FINAL PRINT**





AVALARA HAWK TOWER







Removal of Existing **AVALAR** Letters and Replace with **"SLALOM"**  
 No Change in **"HAWKTOWER"**



**West Entrance Elevation**



**NATIONAL SIGN**  
CORPORATION

1541 S. 92nd Place, #B, Seattle, WA 98108  
 P: 206-282-0700  
 www.nationalsigncorp.com

This is an original unpublished drawing, created by National Sign Corporation. It is submitted for your personal use in connection with a project being planned for you by National Sign Corporation. It is not to be shown to anyone outside your organization, or to be used, reproduced, copied or exhibited in any fashion. Any usage beyond that granted to buyer herein shall require the separate payment of a design and engineering fee to National Sign Corporation.

**JOB INFORMATION:**  
**SLALOM INC.**  
 255 S KING ST  
 SEATTLE, WA 98104-3317

**REPRESENTATIVE:**  
 Tim Z  
**DESIGNER:**  
 Pushkar P

**DATE:**  
 10/16/23  
**DESIGN NUMBER:**  
 00281 V3

**SCALE:** 1/2"=1'





**West Entrance Elevation**



**NATIONAL SIGN**  
CORPORATION

1541 S. 92nd Place, #B, Seattle, WA 98108  
P: 206-282-0700  
www.nationalsigncorp.com

This is an original unpublished drawing, created by National Sign Corporation. It is submitted for your personal use in connection with a project being planned for you by National Sign Corporation. It is not to be shown to anyone outside your organization, or to be used, reproduced, copied or exhibited in any fashion. Any usage beyond that granted to buyer herein shall require the separate payment of a design and engineering fee to National Sign Corporation.

**JOB INFORMATION:**  
**SLALOM INC.**  
255 S KING ST  
SEATTLE, WA 98104-3317

**REPRESENTATIVE:**  
Tim Z  
**DESIGNER:**  
Pushkar P

**DATE:**  
10/16/23

**DESIGN NUMBER:**  
00281 V3

**SCALE:** 1/2"=1'

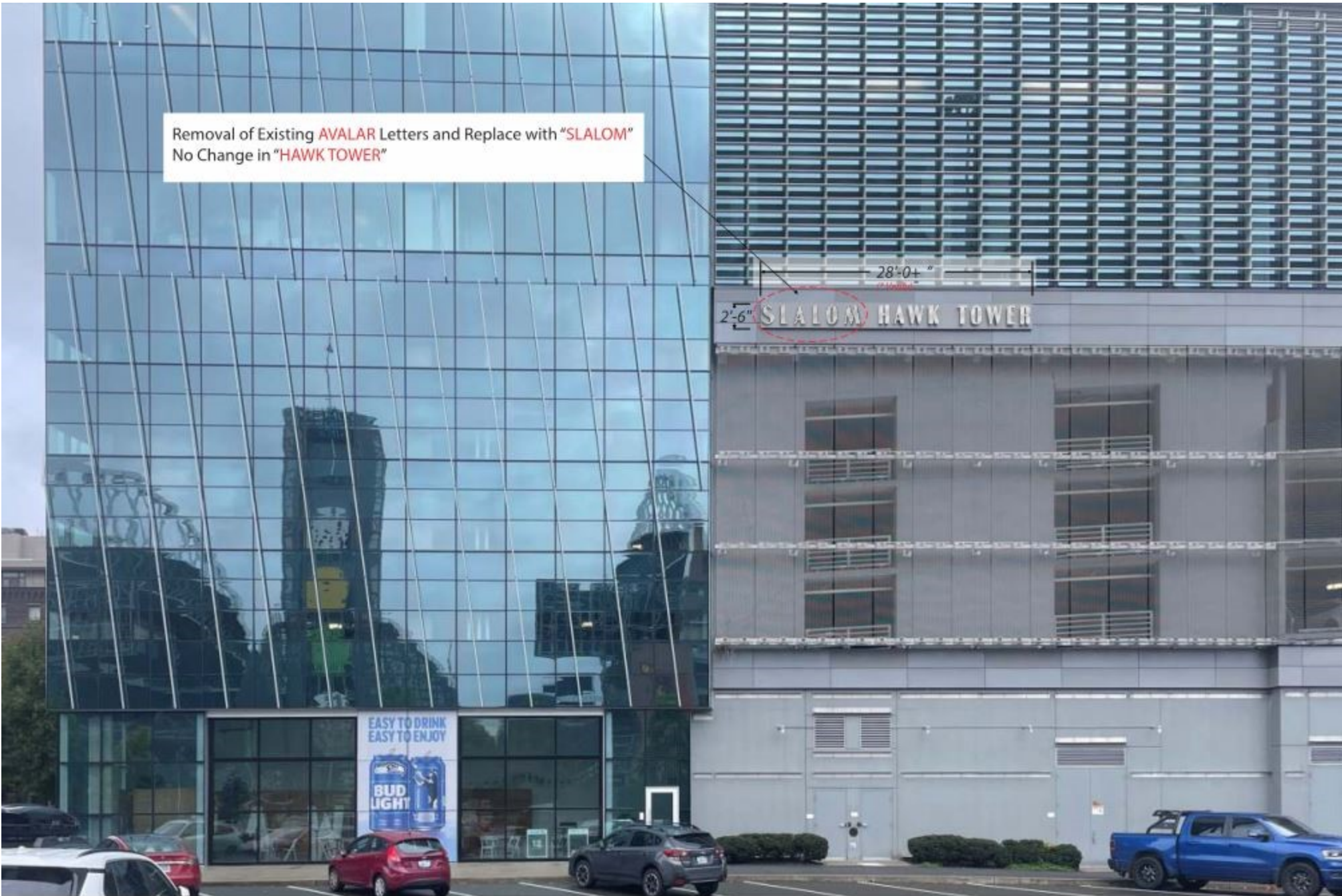






Removal of Existing **AVALAR** Letters and Replace with "**SLALOM**"  
No Change in "**HAWK TOWER**"

28'-0" **SLALOM HAWK TOWER**





28'-0± " (\* Verify)



Removal of Existing **AVALAR** Letters and Replace with "SLALOM"  
No Change in "HAWK TOWER"

5'-7"  
2'-6"

22" (Verify)

**South Entrance Elevation**



**NATIONAL SIGN**  
CORPORATION

1541 S. 92nd Place, #B, Seattle, WA 98108  
P: 206-282-0700  
www.nationalsigncorp.com

This is an original unpublished drawing, created by National Sign Corporation. It is submitted for your personal use in connection with a project being planned for you by National Sign Corporation. It is not to be shown to anyone outside your organization, or to be used, reproduced, copied or exhibited in any fashion. Any usage beyond that granted to buyer herein shall require the separate payment of a design and engineering fee to National Sign Corporation.

**JOB INFORMATION:**  
**SLALOM INC.**  
255 S KING ST  
SEATTLE, WA 98104-3317

**REPRESENTATIVE:**  
Tim Z  
**DESIGNER:**  
Pushkar P

**DATE:**  
10/16/23  
**DESIGN NUMBER:**  
00281 V3

**SCALE:** 1/8"=1'



October 24, 2023

City of Seattle  
Department of Neighborhoods

600 4<sup>th</sup> Ave, 4<sup>th</sup> Floor  
Seattle, WA 98104

**Building Sign Revision at 255 S King Street**

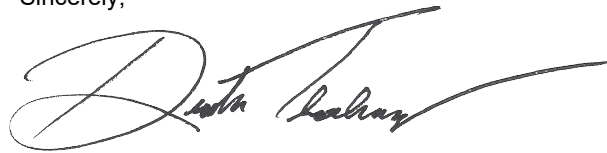
The proposal includes the revision of two (2) existing building signs. These existing signs will be revised from "AVALARA HAWK TOWER" to "SLALOM HAWK TOWER". The location, materials, and overall dimensions will be like for like. No changes are proposed other than replacing the word "AVALARA" with the word "SLALOM"

**Survey of Existing Conditions**

The west building sign is located above the atrium entrance off of the west plaza at 24'-9" above grade. The letters for the west sign are 16" tall with a stainless-steel finish. Each individual letter is backlit with white LEDs.

The south building sign is located near the center of the south tower at 55'-9" above grade. The letters for the south sign are 22" tall with a stainless-steel finish. Each individual letter is backlit with white LEDs.

Sincerely,



DUSTIN THORLAKSON | AIA  
President  
FREIHEIT Architecture



# slalom

**255 S KING ST SEATTLE, WA 98104-3317**

*S/F ILLUMINATED LETTER SETS*





# SLALOM INC. - SEATTLE

---

**SIGN  
TYPE 01**

S/F WALL SIGN EXTERIOR SINGLE FACE ILLUMINATED LETTER SETS  
Quantity: (2)

---



**NATIONAL SIGN**  
CORPORATION

1541 S. 92nd Place, #B, Seattle, WA 98108  
P: 206-282-0700  
www.nationalsigncorp.com

This is an original unpublished drawing, created by National Sign Corporation. It is submitted for your personal use in connection with a project being planned for you by National Sign Corporation. It is not to be shown to anyone outside your organization, or to be used, reproduced, copied or exhibited in any fashion. Any usage beyond that granted to buyer herein shall require the separate payment of a design and engineering fee to National Sign Corporation.

**JOB INFORMATION:**  
**SLALOM INC.**  
255 S KING ST  
SEATTLE, WA 98104-3317

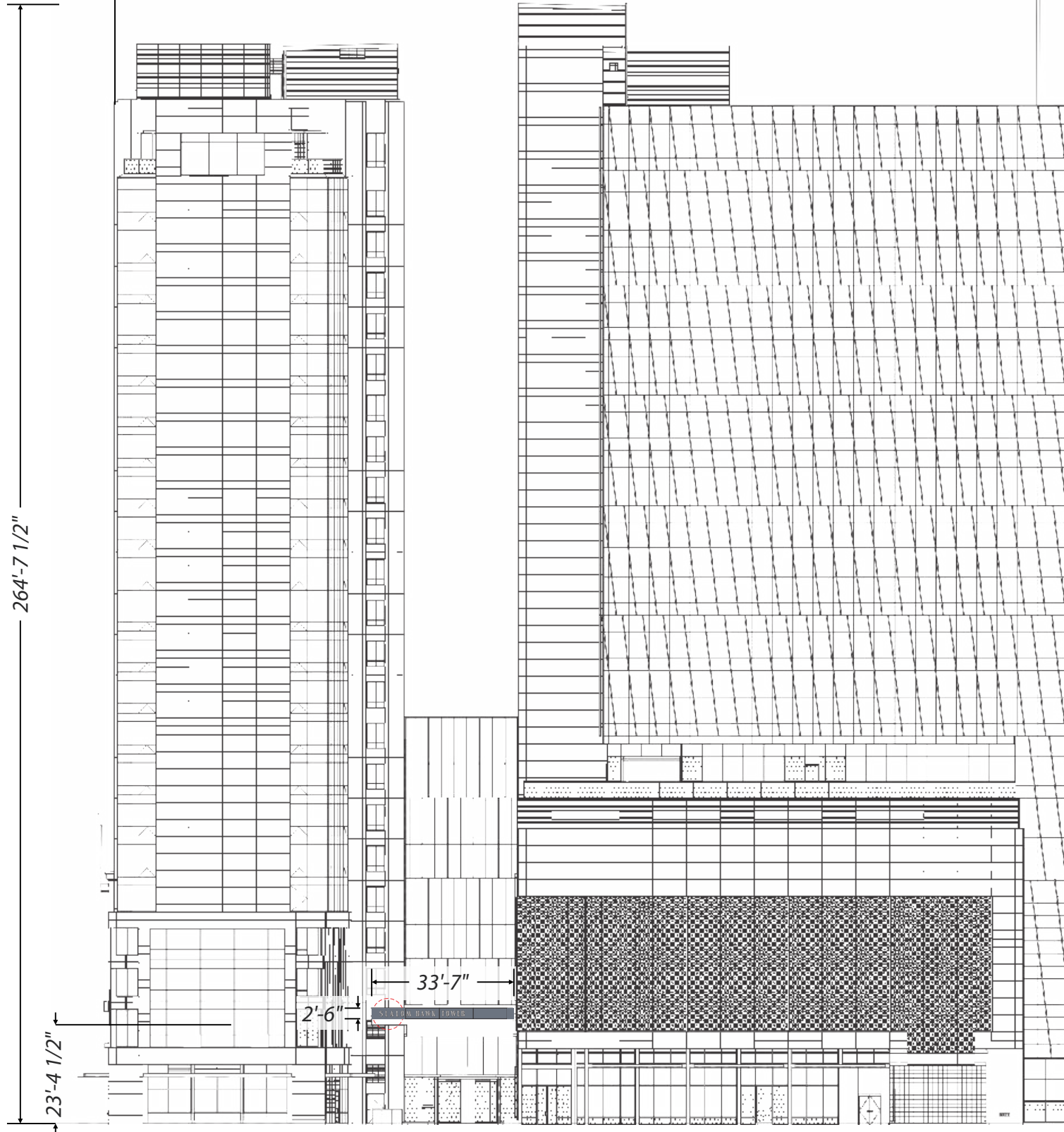
**REPRESENTATIVE:**  
Tim Z  
**DESIGNER:**  
Pushkar P

**DATE:**  
10/16/23  
**DESIGN NUMBER:**  
00281 V3

**SCALE:**  
\_\_\_\_\_

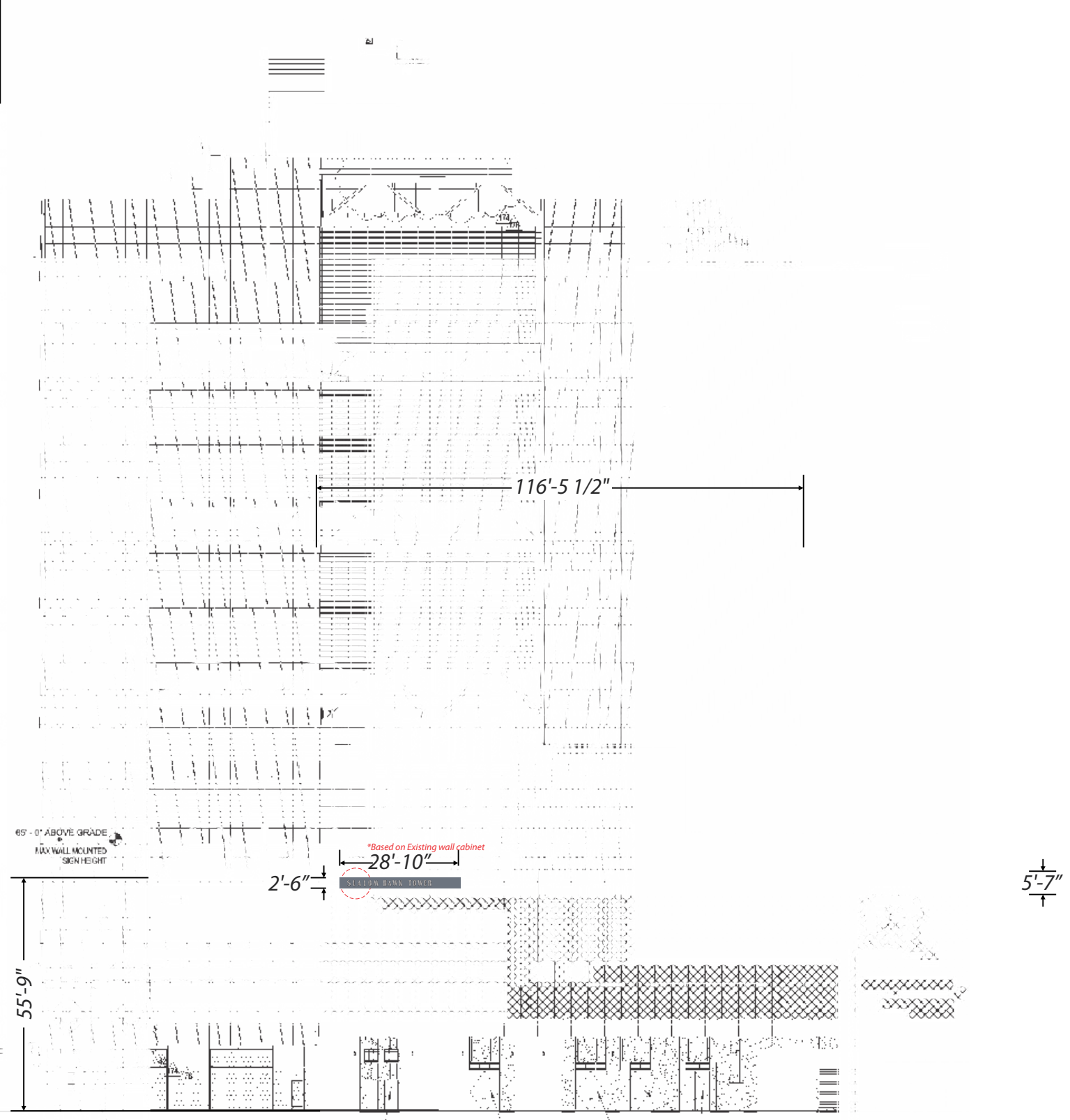


226'-10 1/2"



**West Entrance Elevation**

**SIGN 1**- LETTER SET TO BE HALO ILLUMINATED HORIZONTALLY BRUSHED STAINLESS STEEL REVERSE PAN CHANNEL



**South Entrance Elevation**

**SIGN 2**- LETTER SET TO BE HALO ILLUMINATED HORIZONTALLY BRUSHED STAINLESS STEEL REVERSE PAN CHANNEL



**NATIONAL SIGN**  
CORPORATION

1541 S. 92nd Place, #B, Seattle, WA 98108  
P: 206-282-0700  
www.nationalsigncorp.com

This is an original unpublished drawing, created by National Sign Corporation. It is submitted for your personal use in connection with a project being planned for you by National Sign Corporation. It is not to be shown to anyone outside your organization, or to be used, reproduced, copied or exhibited in any fashion. Any usage beyond that granted to buyer herein shall require the separate payment of a design and engineering fee to National Sign Corporation.

**JOB INFORMATION:**  
**SLALOM INC.**  
255 S KING ST  
SEATTLE, WA 98104-3317

**REPRESENTATIVE:**  
Tim Z  
**DESIGNER:**  
Pushkar P

**DATE:**  
10/16/23

**DESIGN NUMBER:**  
00281 V3

**SCALE:** 1/32"=1'



**West Entrance Elevation**



**NATIONAL SIGN**  
CORPORATION

1541 S. 92nd Place, #B, Seattle, WA 98108  
P: 206-282-0700  
www.nationalsigncorp.com

This is an original unpublished drawing, created by National Sign Corporation. It is submitted for your personal use in connection with a project being planned for you by National Sign Corporation. It is not to be shown to anyone outside your organization, or to be used, reproduced, copied or exhibited in any fashion. Any usage beyond that granted to buyer herein shall require the separate payment of a design and engineering fee to National Sign Corporation.

**JOB INFORMATION:**  
**SLALOM INC.**  
255 S KING ST  
SEATTLE, WA 98104-3317

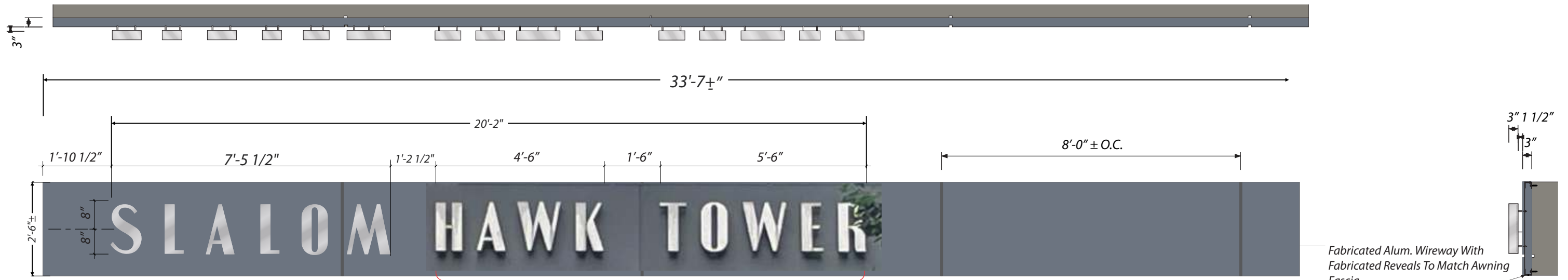
**REPRESENTATIVE:**  
Tim Z  
**DESIGNER:**  
Pushkar P

**DATE:**  
10/16/23

**DESIGN NUMBER:**  
00281 V3

**SCALE:** 3/16"=1'





Stay as it is.

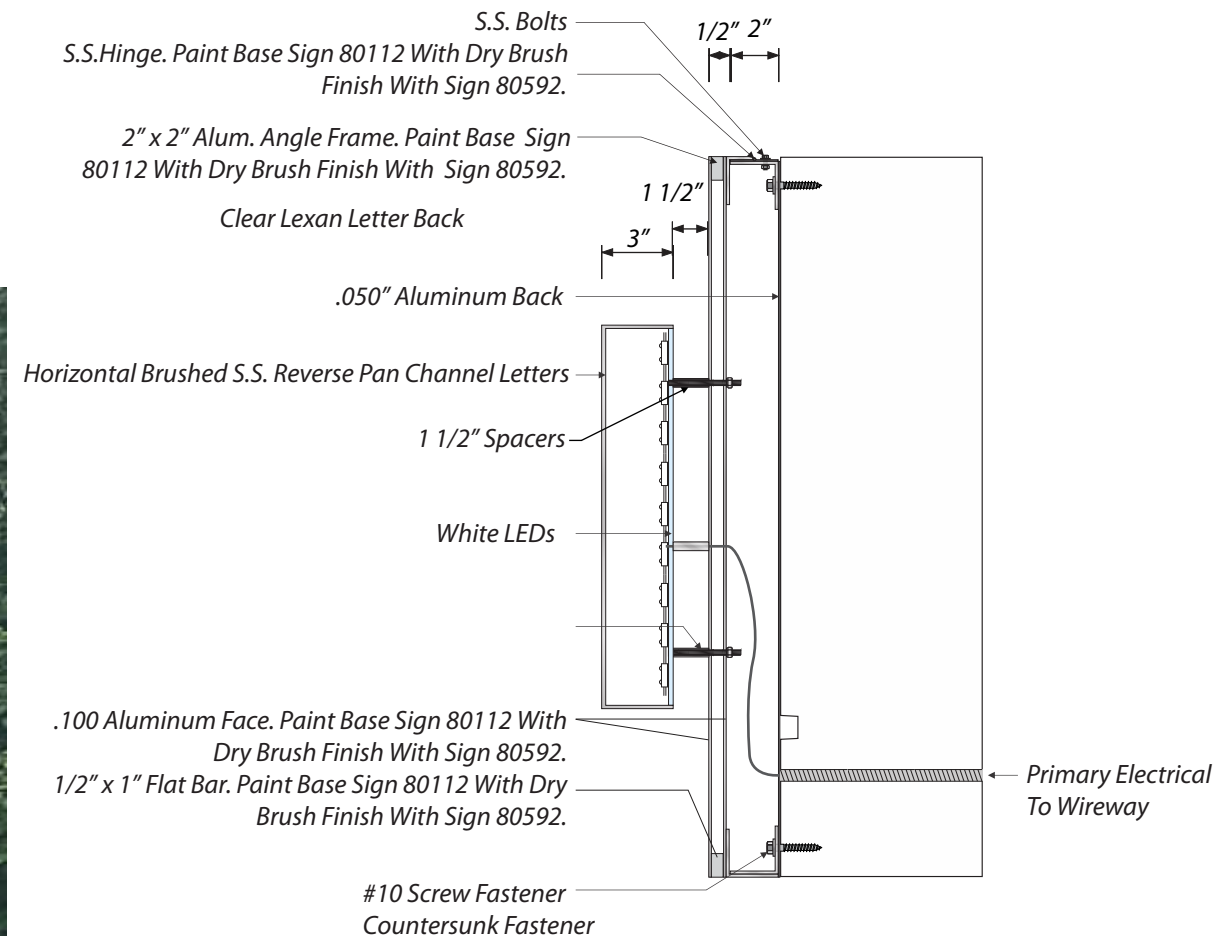
Removal of Existing **AVALAR** Letters and Replace with "**SLALOM**"  
 No Change in "**HAWK TOWER**"

**West Entrance Elevation**

**Sign 1:** Manufacture & Install (1) Single Face Illuminated Entrance Display With  
 Stainless Steel Reverse Pan Channel Letters Mounted To Wireway.  
 Scale: 3/8"=1'-0"



Existing Sign



**End View Detail**

Scale: 1 1/2"=1'-0"



**NATIONAL SIGN**  
CORPORATION

1541 S. 92nd Place, #B, Seattle, WA 98108  
 P: 206-282-0700  
 www.nationalsigncorp.com

This is an original unpublished drawing, created by National Sign Corporation. It is submitted for your personal use in connection with a project being planned for you by National Sign Corporation. It is not to be shown to anyone outside your organization, or to be used, reproduced, copied or exhibited in any fashion. Any usage beyond that granted to buyer herein shall require the separate payment of a design and engineering fee to National Sign Corporation.

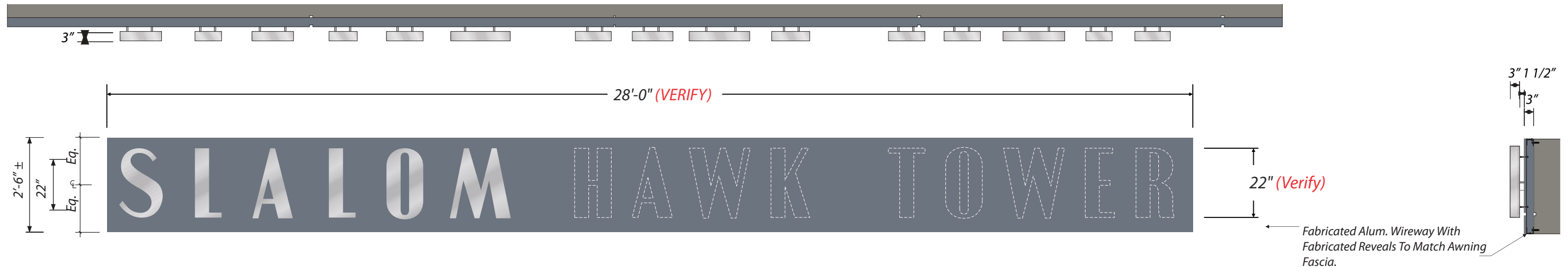
**JOB INFORMATION:**  
**SLALOM INC.**  
 255 S KING ST  
 SEATTLE, WA 98104-3317

**REPRESENTATIVE:**  
 Tim Z  
**DESIGNER:**  
 Pushkar P

**DATE:**  
 10/16/23

**DESIGN NUMBER:**  
 00281 V3

**SCALE:** 3/8"=1'



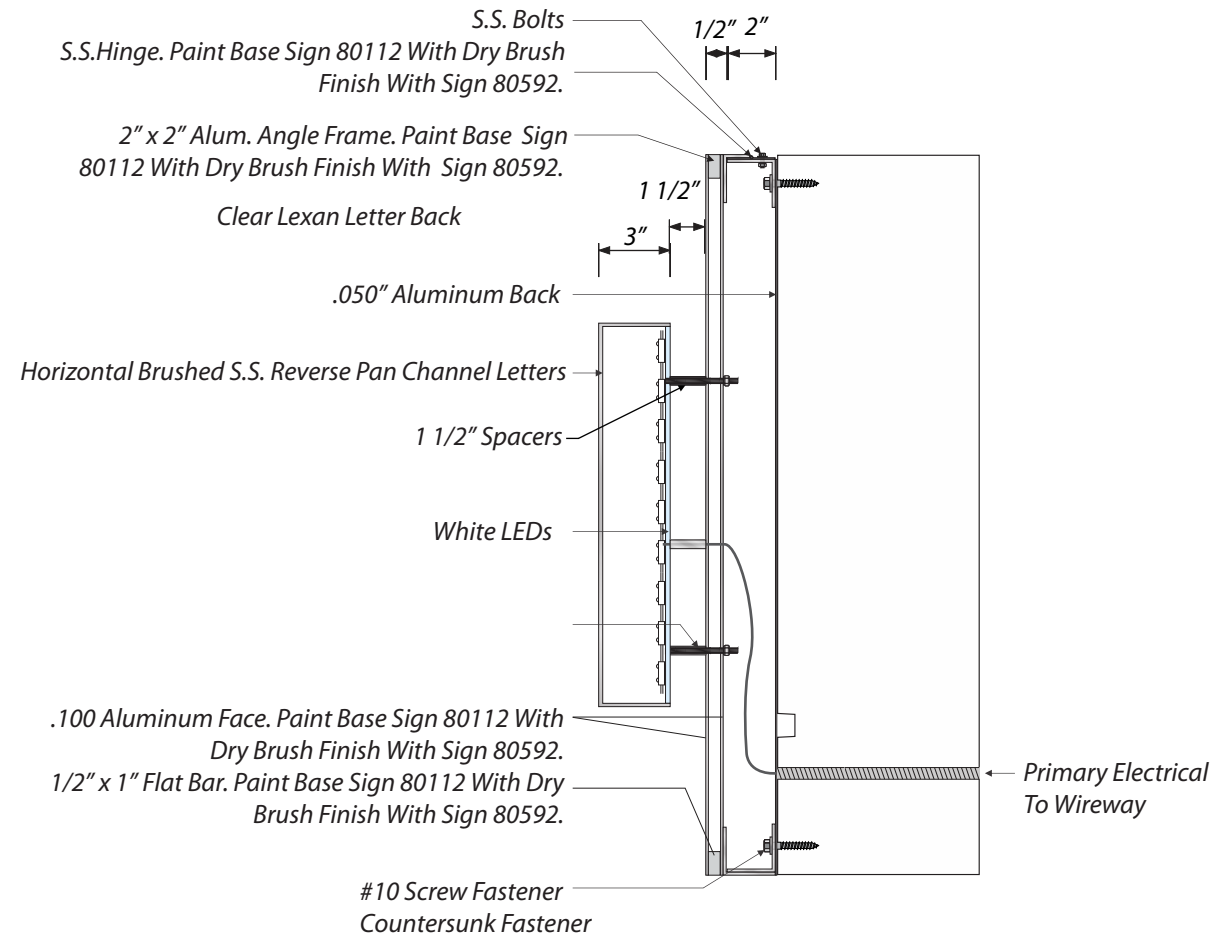
Removal of Existing **AVALAR** Letters and Replace with **"SLALOM"**  
 No Change in **"HAWK TOWER"**

**South Entrance Elevation**

**Sign 2:** Manufacture & Install (1) Single Face Illuminated Entrance Display With Stainless Steel Reverse Pan Channel Letters Mounted To Wireway.  
 Scale: 3/8"=1'-0"



**Existing Sign**

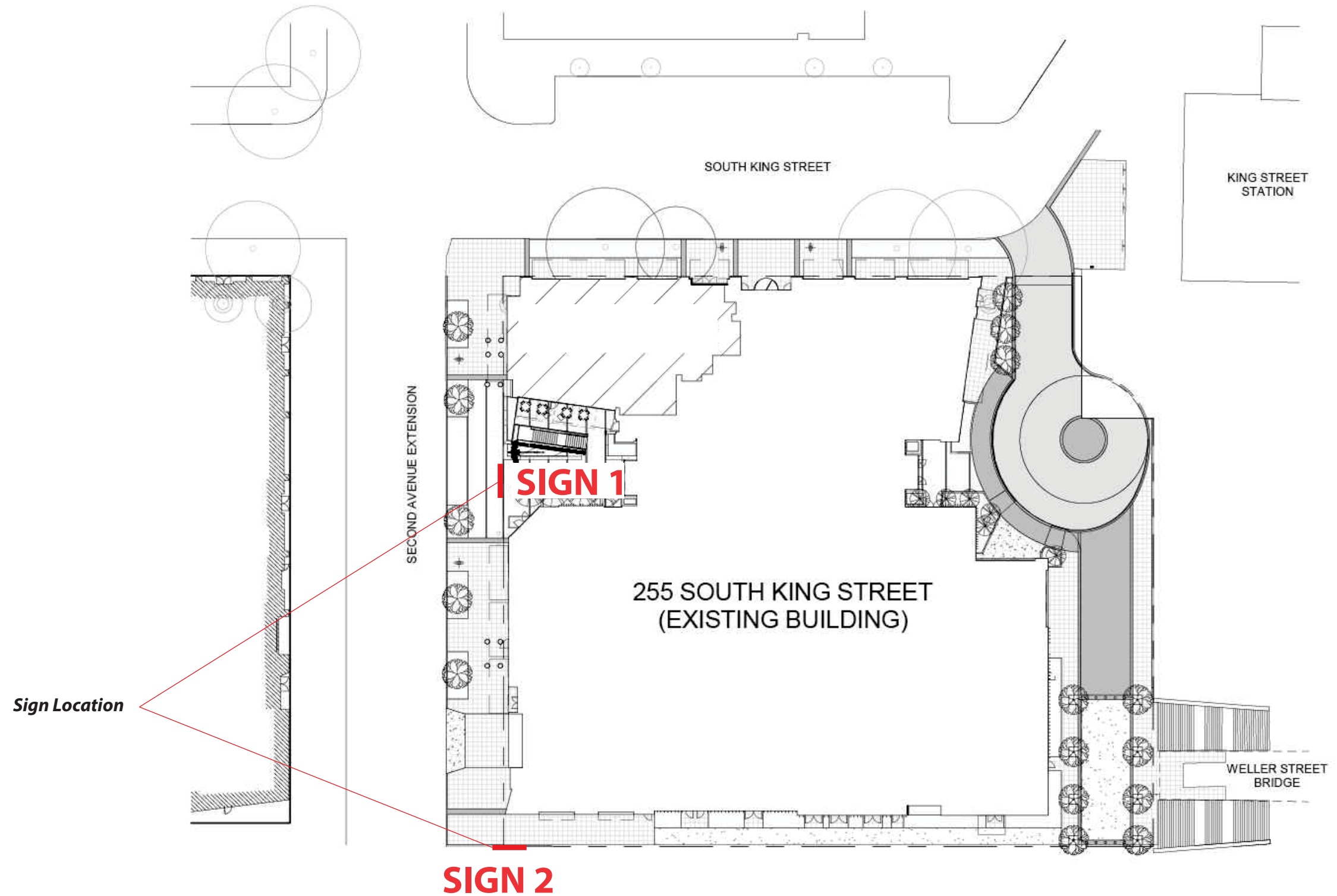


**End View Detail**

Scale: 1 1/2"=1'-0"







1541 S. 92nd Place, # B, Seattle, WA 98108  
P: (206) 282-0700  
nationalsigncorp.com

**JOB INFORMATION:**  
**Slalom INC**

**REPRESENTATIVE:**  
Tim Z

**DESIGNER:**  
Pushkar P

**DATE:**  
10/16/23


**REVISION:**

1	
2	
3	
4	
5	
6	
7	
8	
9	

**REVIEWED BY:**

C	00/00/00	Version #
S	00/00/00	Version #
P	00/00/00	Version #

This is an original unpublished drawing, created by National Sign Corporation. It is not to be shown to anyone outside your organization, or to be used, reproduced, copied or exhibited in any fashion. Any usage beyond that granted to buyer herein shall require the separate payment of a design and engineering fee to National Sign Corporation.

 SIGN(S) TO BE MANUFACTURED TO U.L. SPECIFICATIONS AND WILL BEAR THE U.L. LABEL(S). INSTALL IN ACCORDANCE WITH NATIONAL ELECTRICAL CODES.

**SCALE:** 1" = 1'

**DESIGN NUMBER:**  
00281 V3

**JOB NUMBER:**  
00000

**FINAL PRINT**

Backing - Aluminum

Letters - Stainless Steel

