

## Scope of Work

# NUMERO UNO PIZZA

Exterior Signage  
103 1st Ave S, Seattle, WA 98104

- ✦ Manufacture and Install a set of PVC based sign letters on a proposed sign frame/bands.
- ✦ Manufacture and Install a sleeve kind blade sign on a proposed metal sign frame.
- ✦ Manufacture and Install a double sided blade sign.
- ✦ Installing window sign stripes (bands).

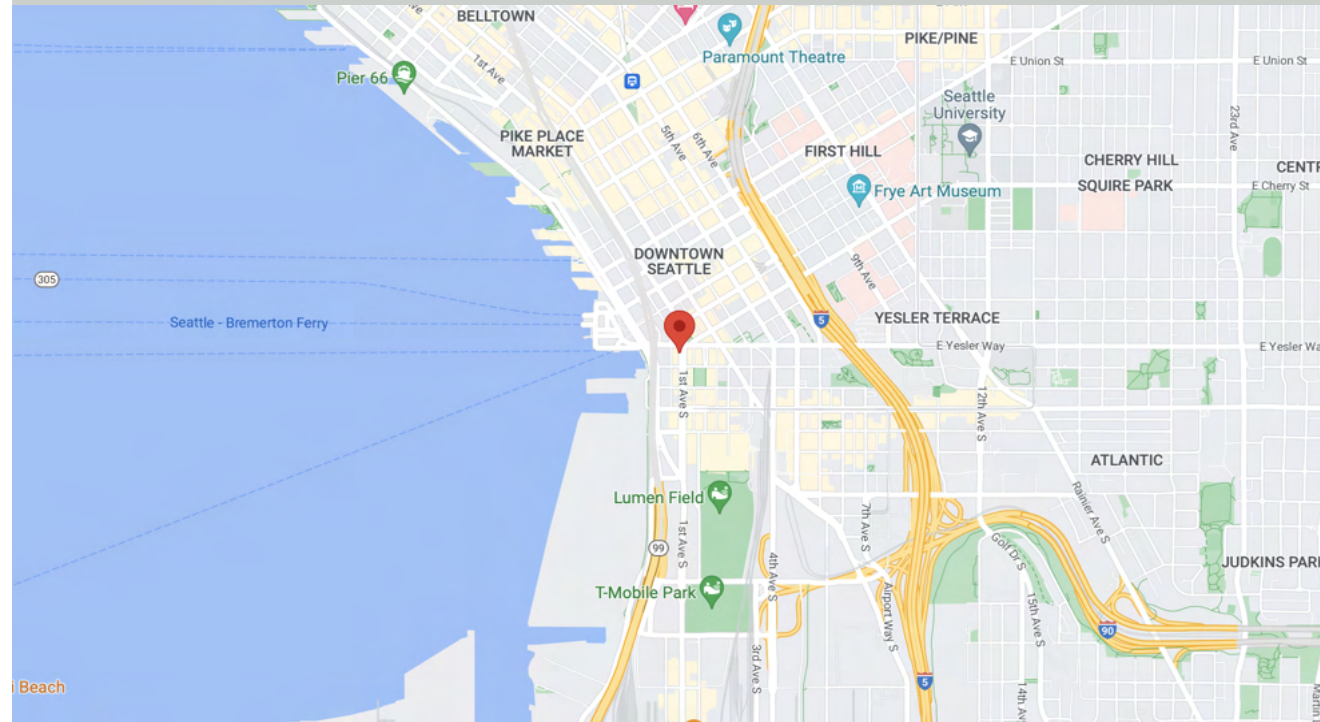
Non-Electrical

Facade: 432 sq. ft.  
Sign Surface: 13.5 sq ft  
% : 3.125

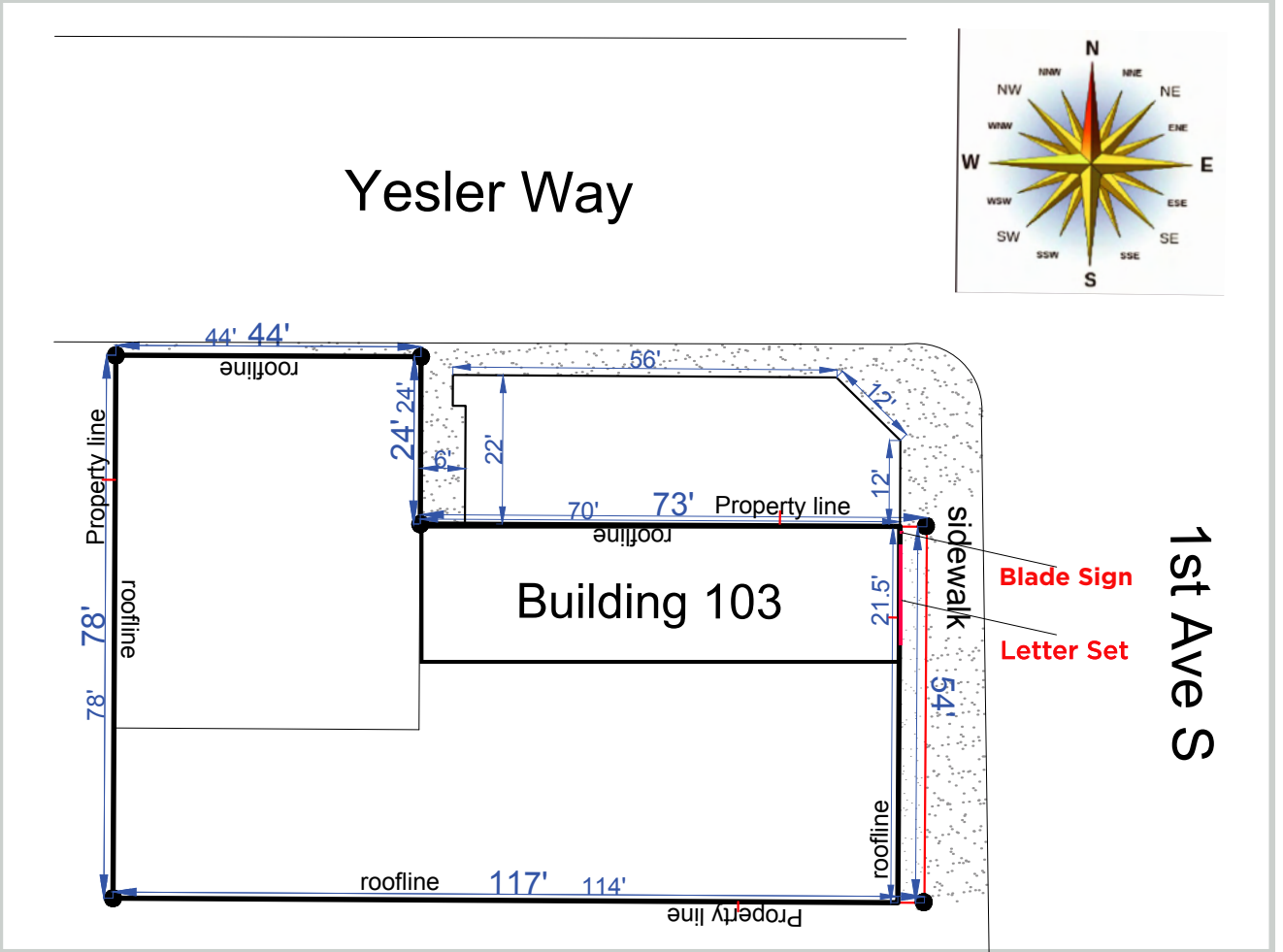
Blade Sign Letter  
Surface: 4 sq. ft.  
12 sq. ft. white background

Window Sign Stripes  
9 sq. ft.

## Vicinity Map



## Site Plan



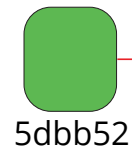
Scale: 1" = 30'

## Aerial Photo

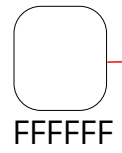




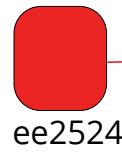
Dimensional PVC (Sintra) letters.  
Painted as referred



5dbb52



FFFFFF



ee2524

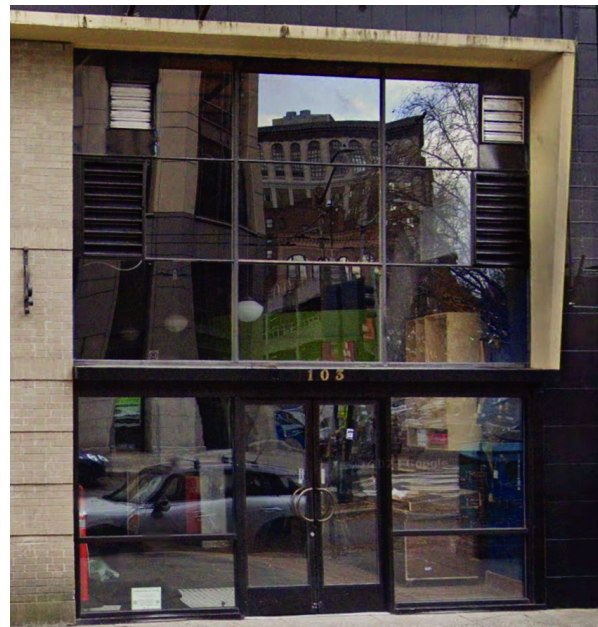
N

U

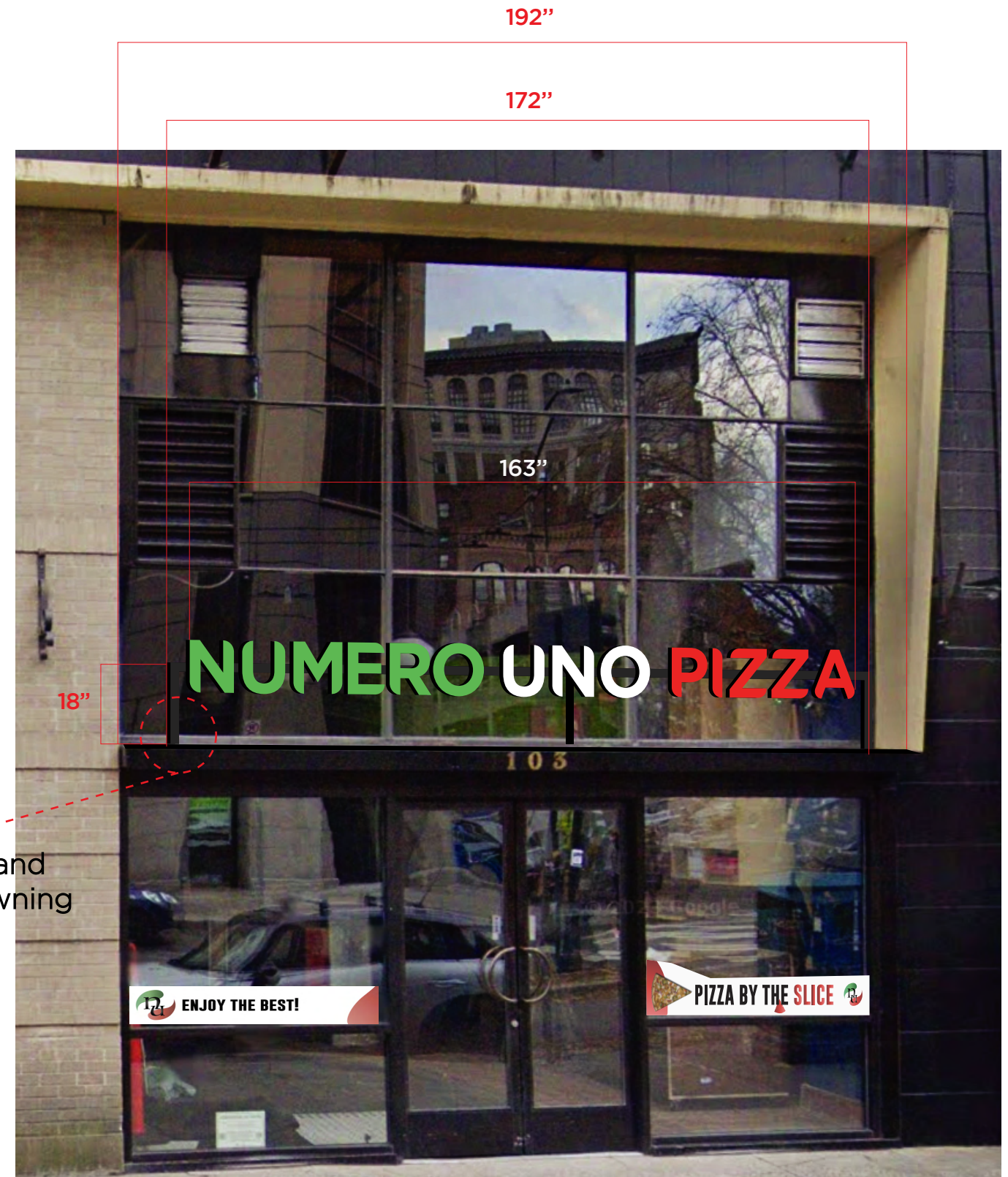
P

1/2" Sintra

Current Storefront



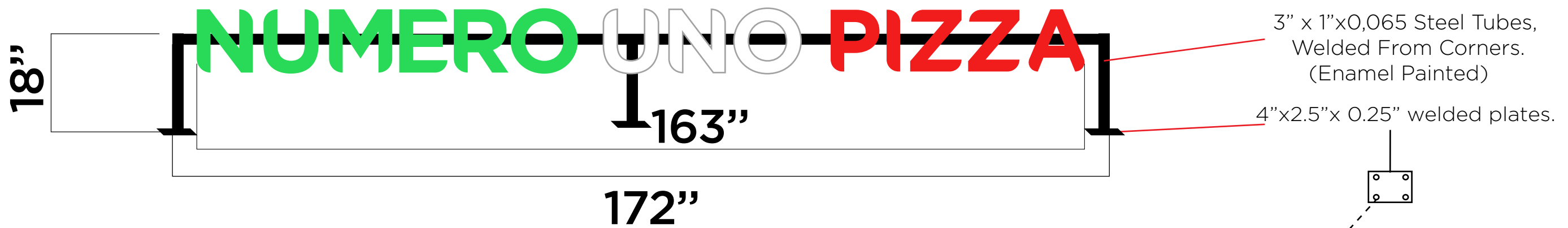
Steel sign frame sits and  
screwed on existing awning



Projected Storefront

# NUMERO UNO PIZZA 12"

Storefront Signs On Metal Sign Bands (Frames)



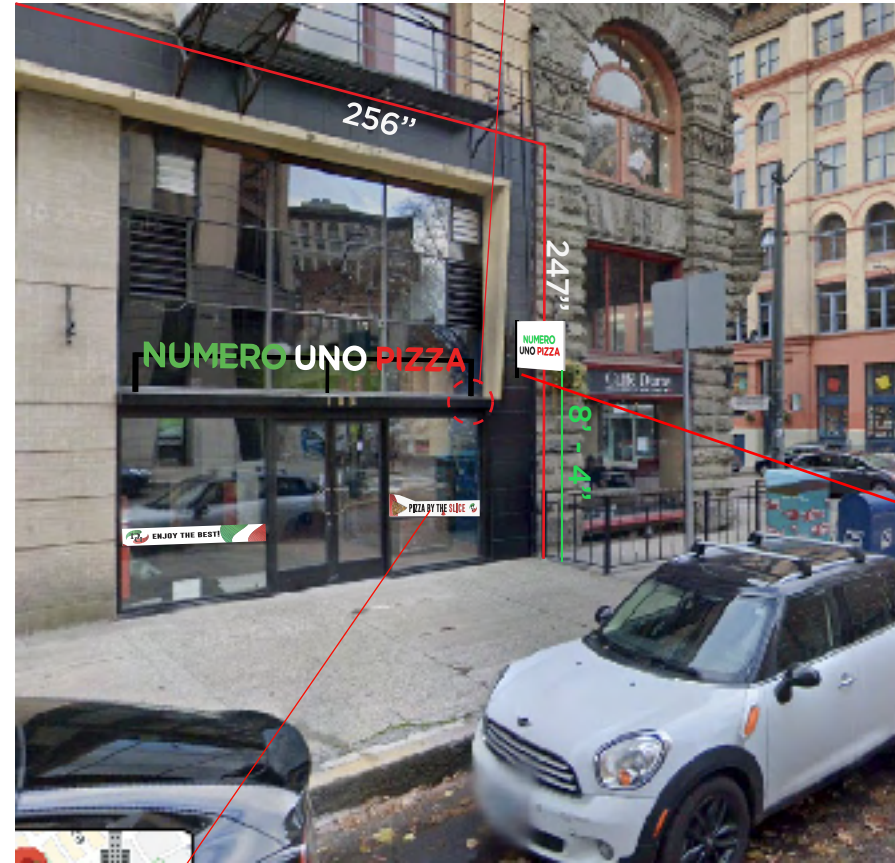
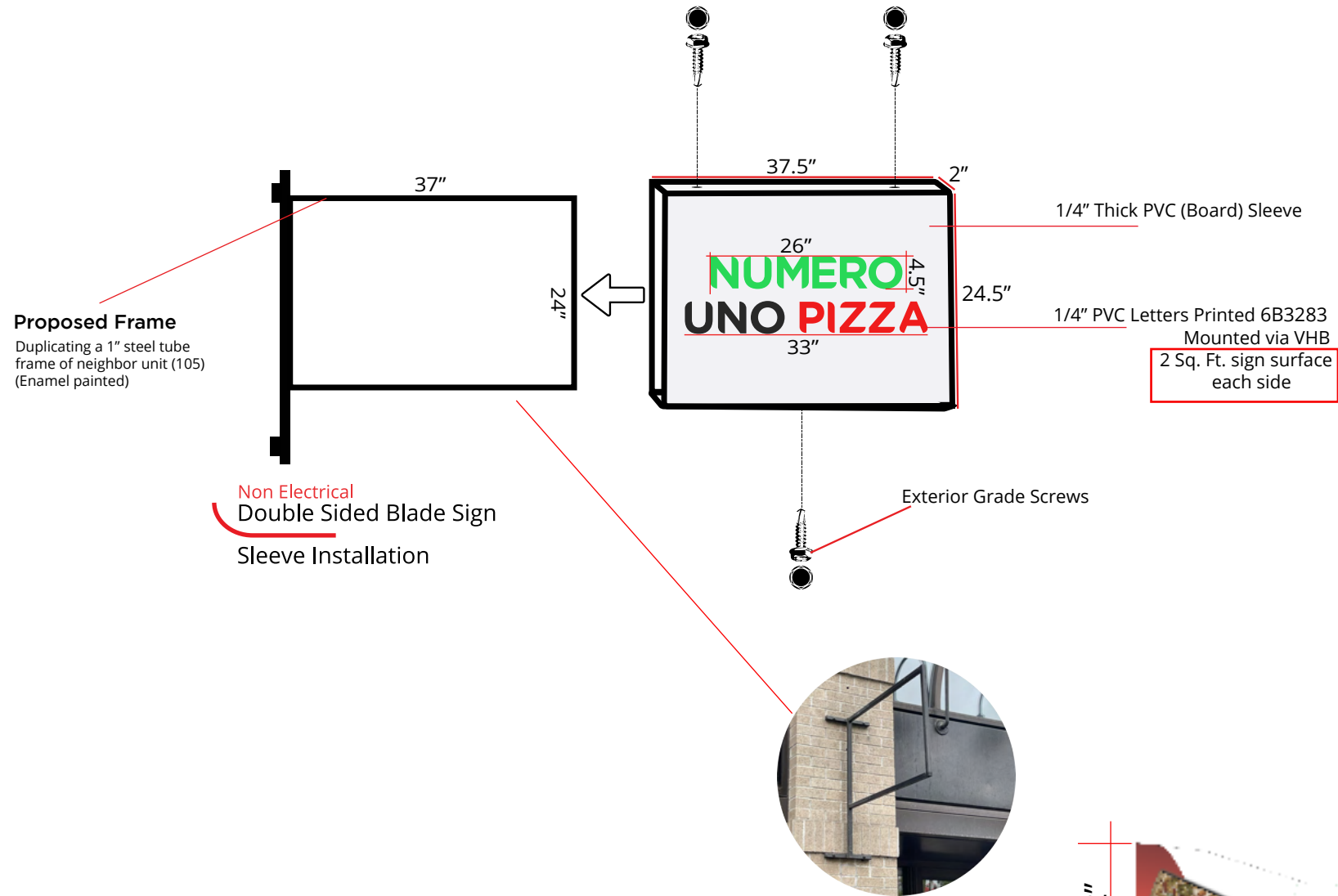
#12 2" Hex Washer Head Self Tapping Sheet Metal Screws Stainless Steel



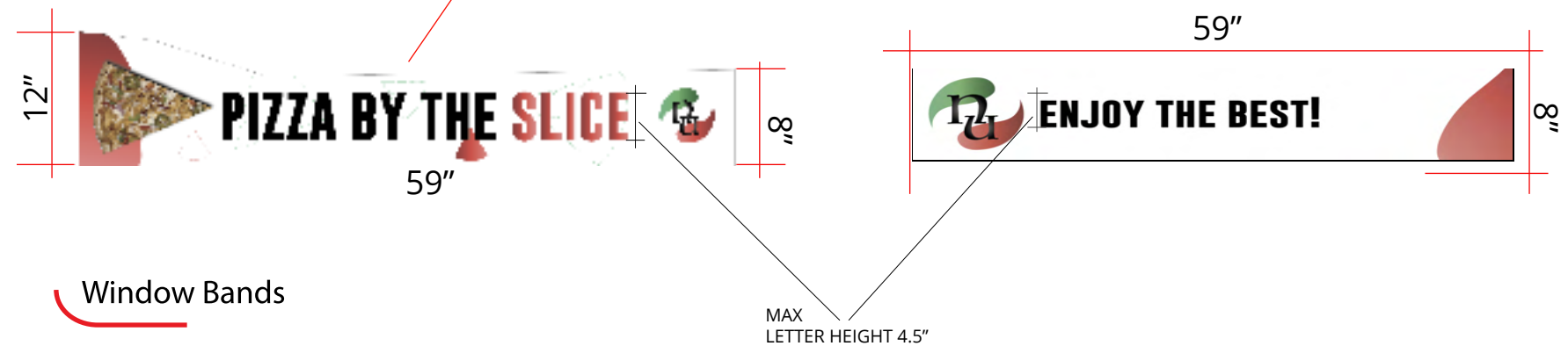
Flush Mount On Sign Frame via 3M VHB and reverse applied stainless steel screws.



#8 x 1/2" Hex Washer Head  
Self Tapping Sheet Metal Screws  
Stainless Steel



SIGN SCALE 1/100 (Proportioned)







PIZZA

**NUMBER UNO**  
PIZZA

**NOT OPEN**

103

The Monkey

The Monkey Bridge II  
VIETNAMESE CUISINE

Any Slice  
\$3.95 + tax

Two Slices  
\$6.70 + tax

South Valley Specialty Pizzeria  
NUMBER UNO PIZZA  
+1 206 682 7979

ENJOY THE BEST!

NUMBER UNO  
PIZZA  
+1 206 682 7979

PIZZA BY THE SLICE

NUMBER UNO  
PIZZA

Baked Daily  
With Healthy  
Ingredients

numberunopizza.com / +1 206 682 7979





133,1"

8' 1"

135 "

12"

**VIETNAMESE CUISINE**

12"

**THE Monkey Bridge II**

12"

10"

**NUMERO UNO PIZZA**

15' 6"

12'

16'

RESTAURANT  
**FOR LEASE**

GIBRALTAR

LAURA MILLER  
206.351.3573

OUTDOOR

© 20

EN-FRED

FOODLE



## Scope of Work

# NUMERO UNO PIZZA

Exterior Signage  
103 1st Ave S, Seattle, WA 98104

- ✦ Manufacture and Install a set of PVC based sign letters on a proposed sign frame/bands.
- ✦ Manufacture and Install a sleeve kind blade sign on a proposed metal sign frame.
- ✦ Manufacture and Install a double sided blade sign.
- ✦ Installing window sign stripes (bands).

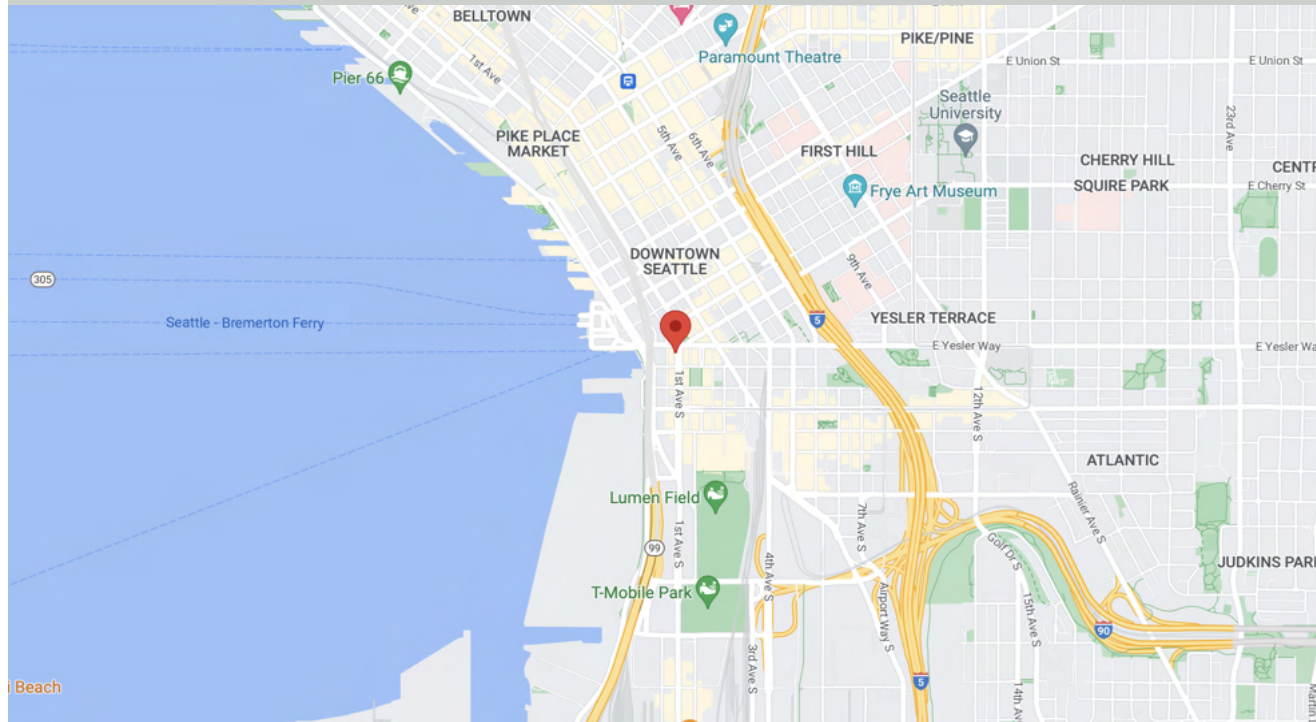
Non-Electrical

Facade: 432 sq. ft.  
Sign Surface: 10 sq. ft.  
% : 2.4

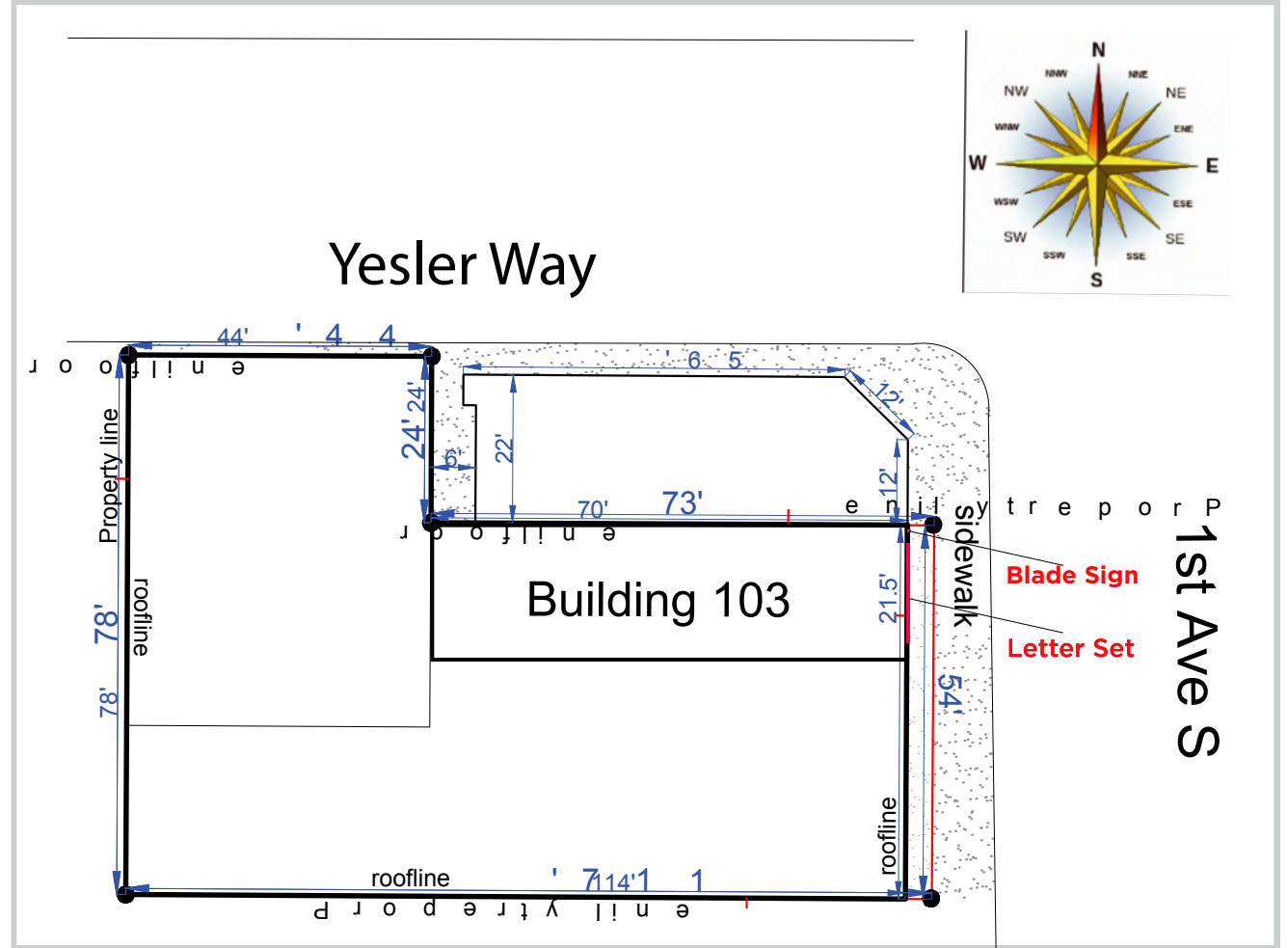
Blade Sign Letter  
Surface: 4 sq. ft.  
12 sq. ft. white background

Window Sign Stripes  
9 sq. ft.

## Vicinity Map



## Site Plan



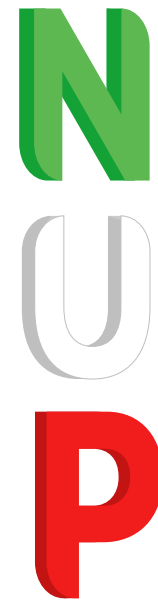
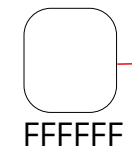
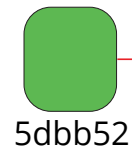
Scale: 1" = 30'

## Aerial Photo





Dimensional PVC (Sintra) letters.  
Painted as referred



1/2" Sintra

Current Storefront



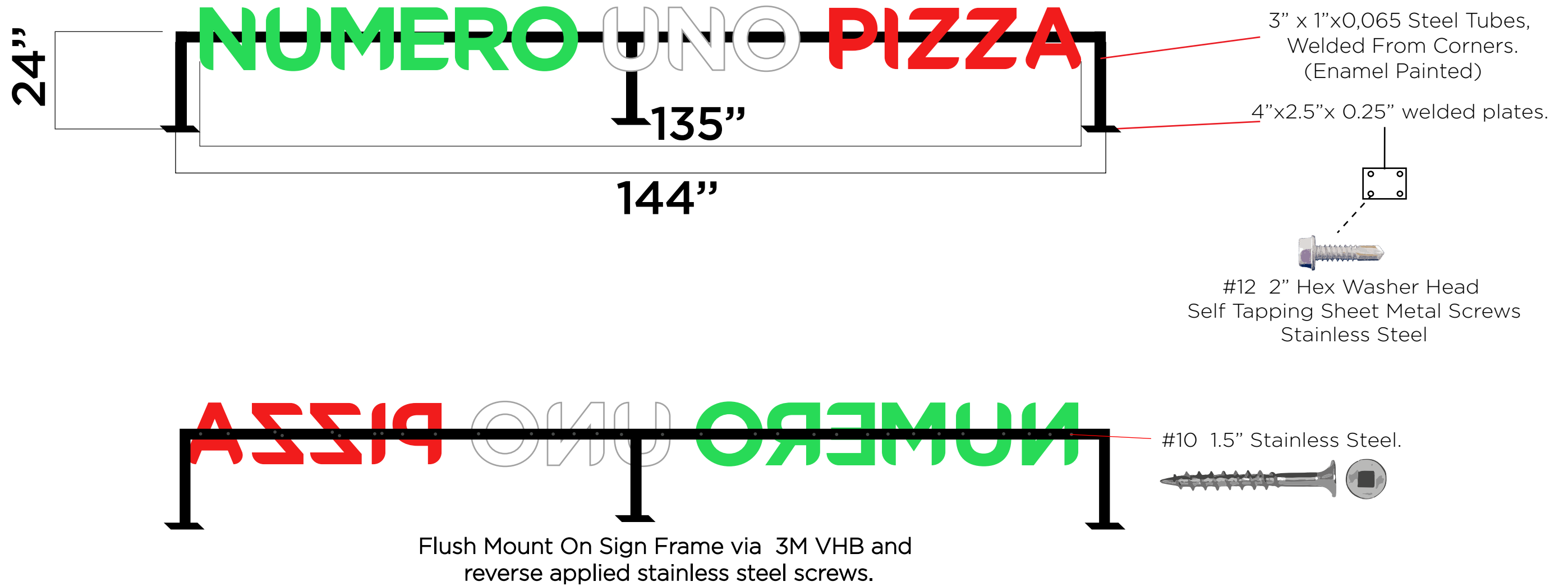
Steel sign frame sits and screwed on existing awning



Projected Storefront



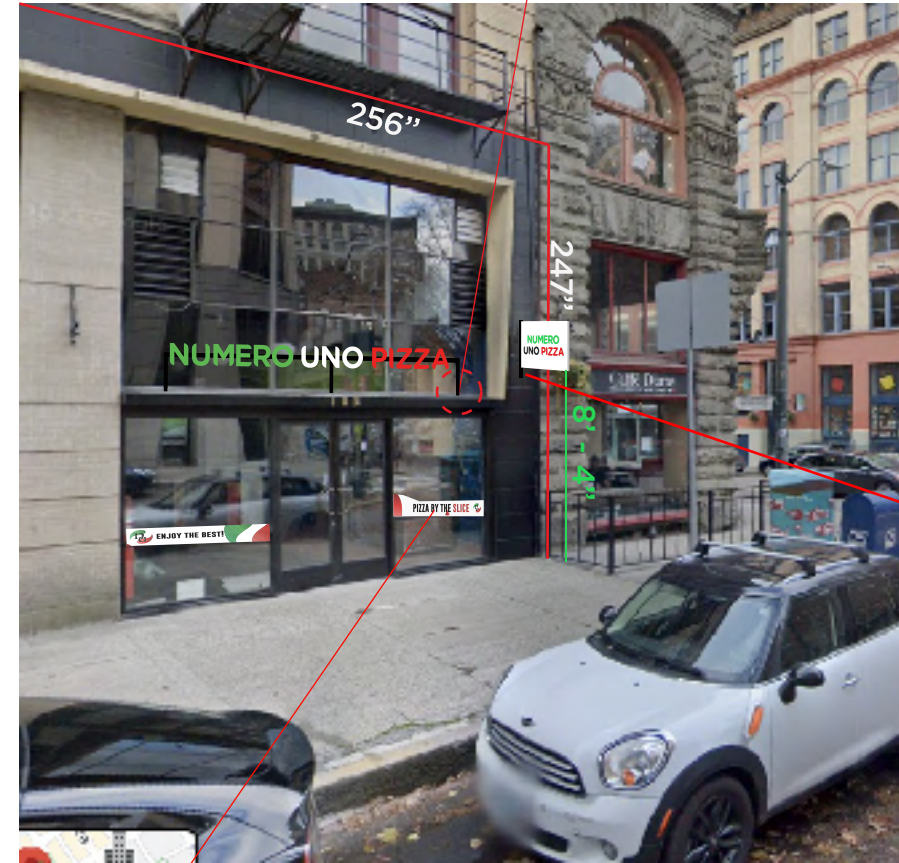
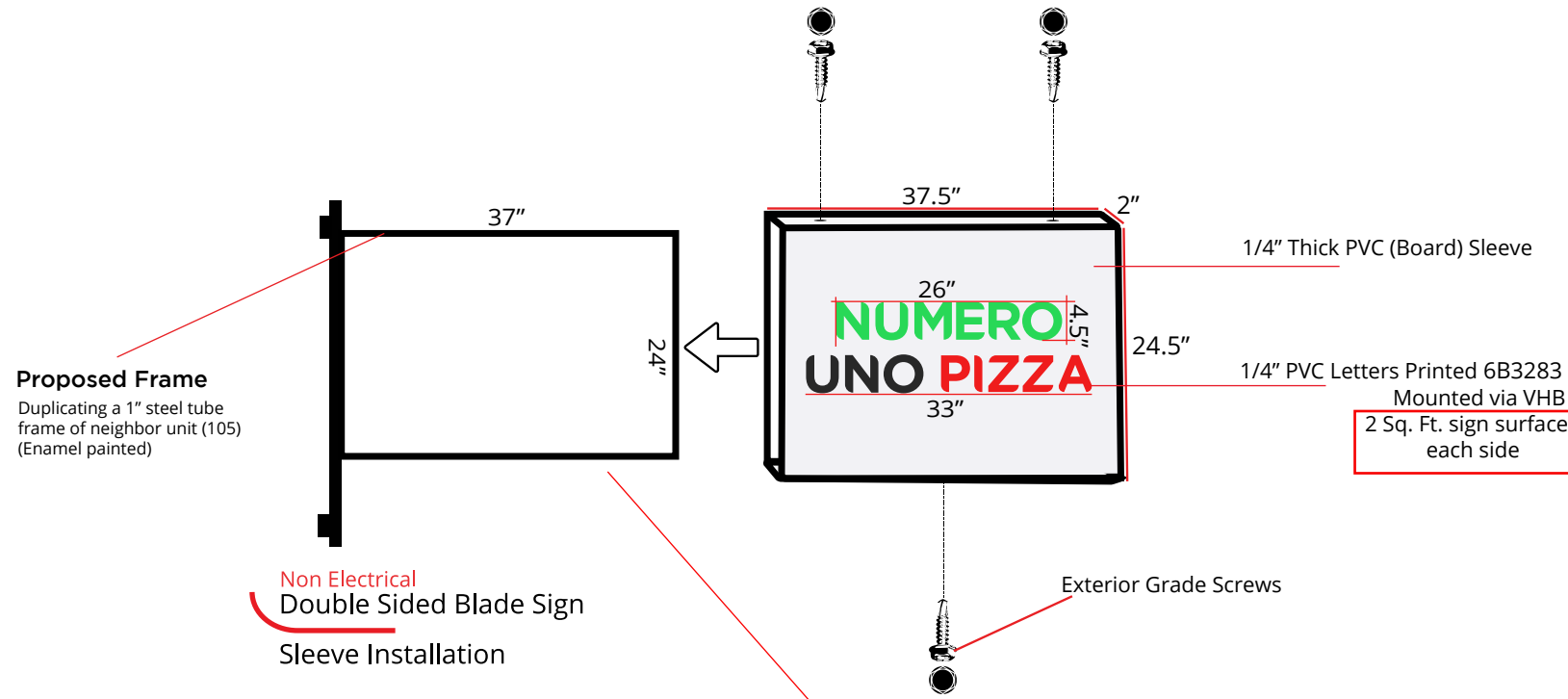
Storefront Signs On Metal Sign Bands (Frames)



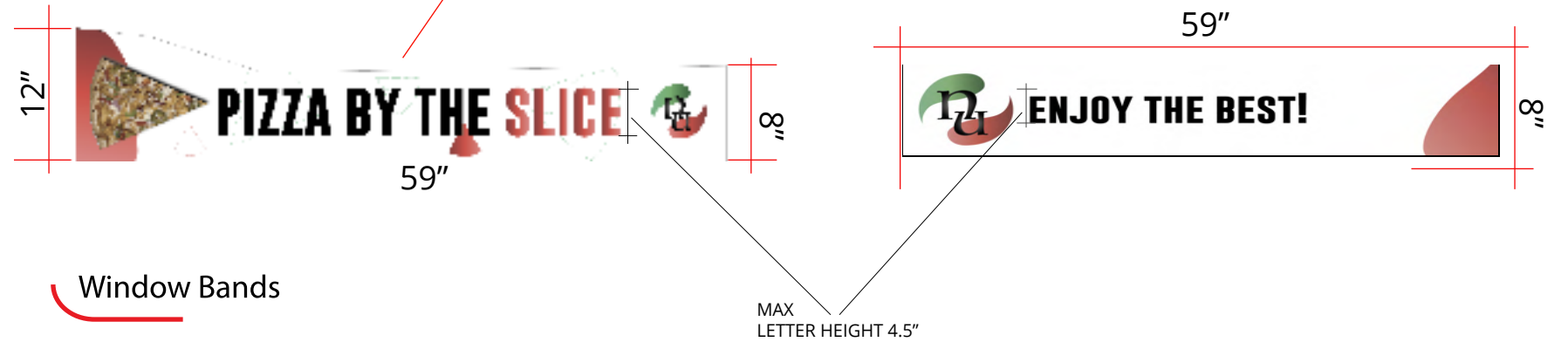




#8 x 1/2" Hex Washer Head  
Self Tapping Sheet Metal Screws  
Stainless Steel



SIGN SCALE 1/100 (Proportioned)





133,1"

8' 1"

163"

12" VIETNAMESE CUISINE

12" THE Monkey Bridge II 12"

12" NUMERO UNO PIZZA

15' 6"

12'

16'

RESTAURANT FOR LEASE  
GIBRALTAR  
LAURA MILLER  
206.351.3573

OUTDOOR

JOHN-FRED

APPLE