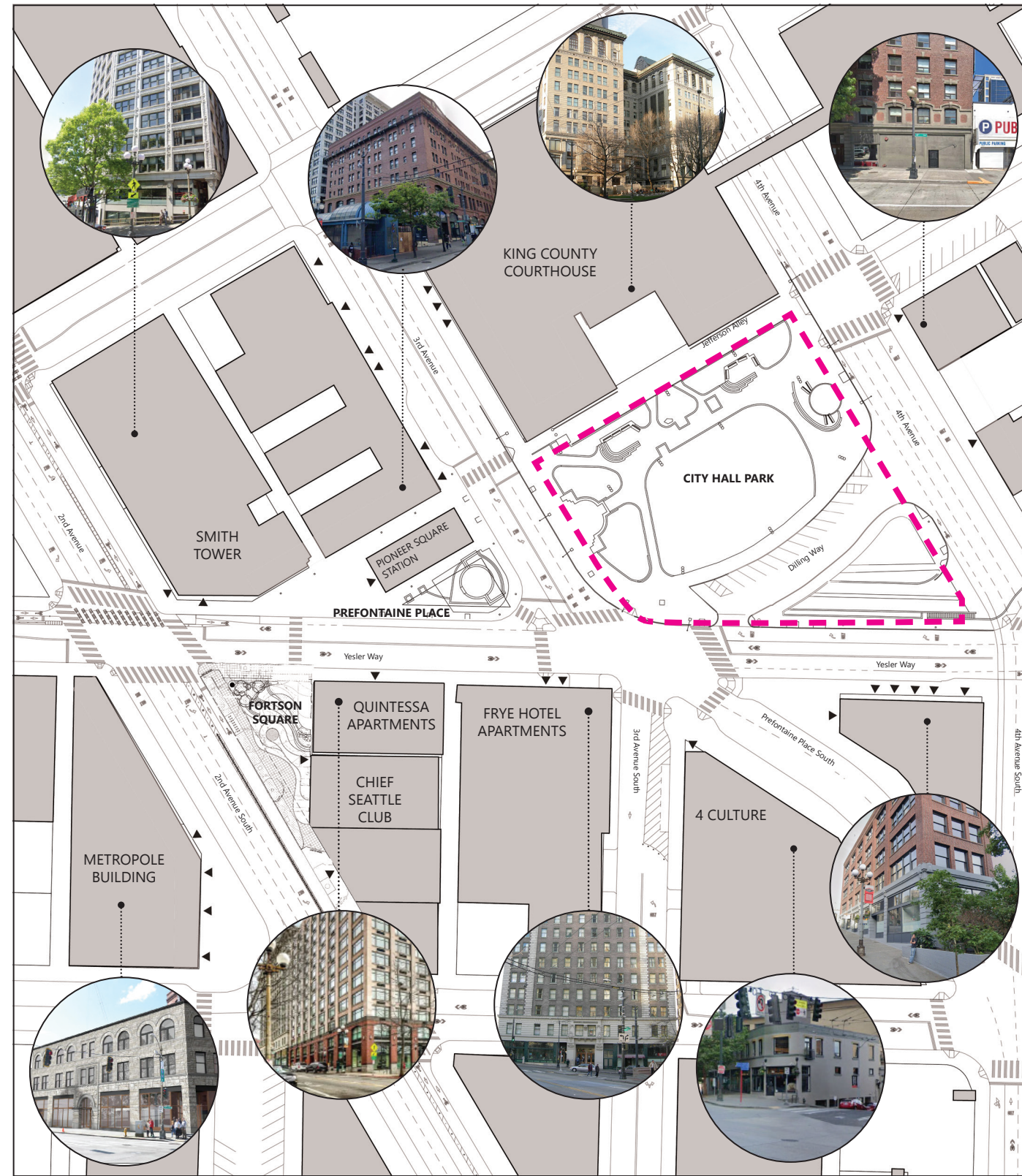
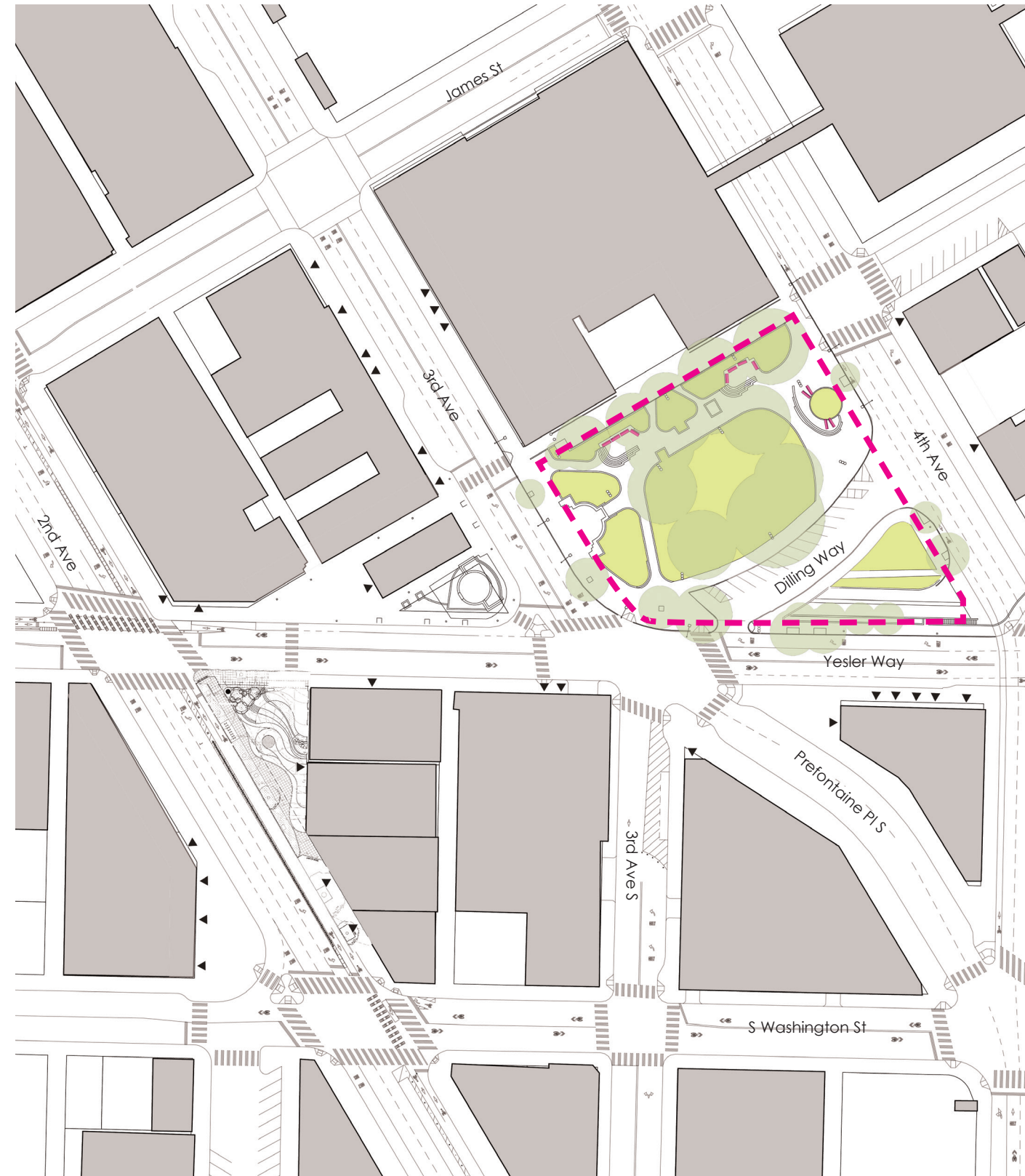


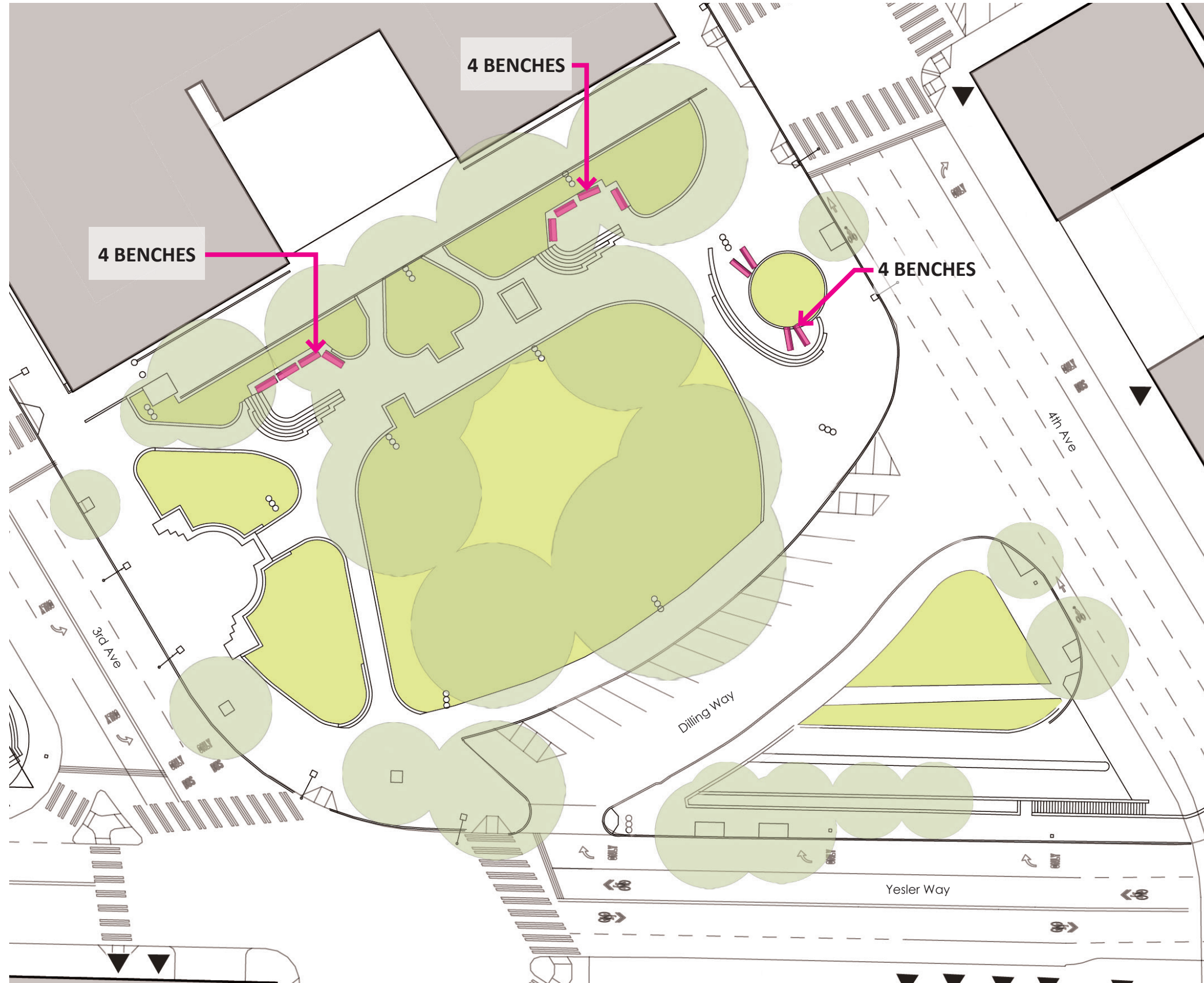
CITY HALL PARK | CONTEXT



CITY HALL PARK | CONTEXT



CITY HALL PARK | PREVIOUS BENCH LOCATIONS



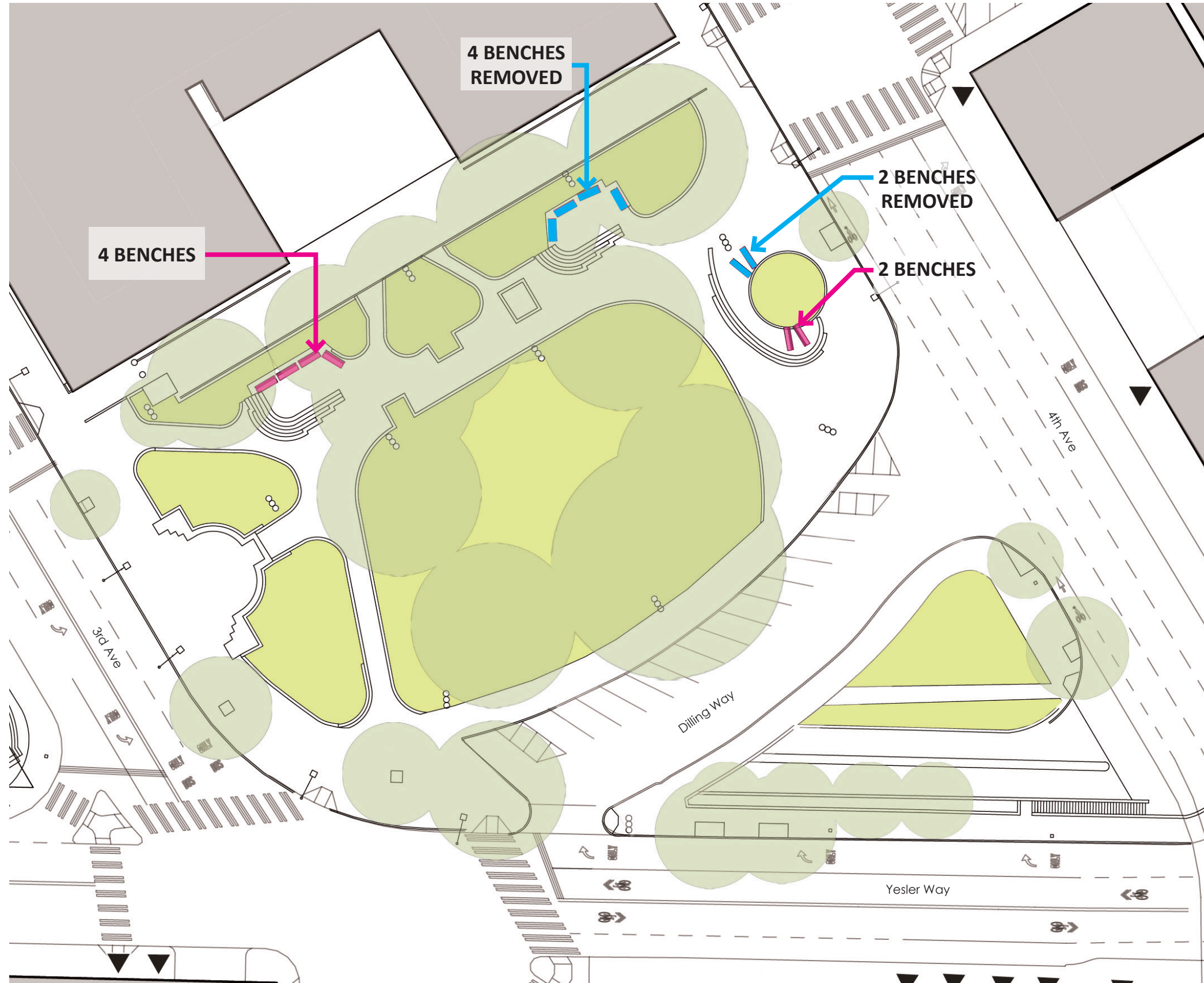
EXISTING BENCHES

Issues with existing benches:

- difficult to maintain
- custom-made precast concrete bases are difficult and expensive to repair
- wood slats are easily vandalized



CITY HALL PARK | EXISTING BENCH LOCATIONS



PROPOSED NEW BENCH OPTIONS

Replacement bench criteria:

- all metal
- preferably black
- 6' length preferred
- easy to maintain



Dumor - Bench 493

- cast aluminum frame, steel seat
- powdercoat black finish available
- available in 6' length
- optional center armrest available
- surface mount tabs
- Unit Pricing: \$1949
- Lead Time: 8 weeks

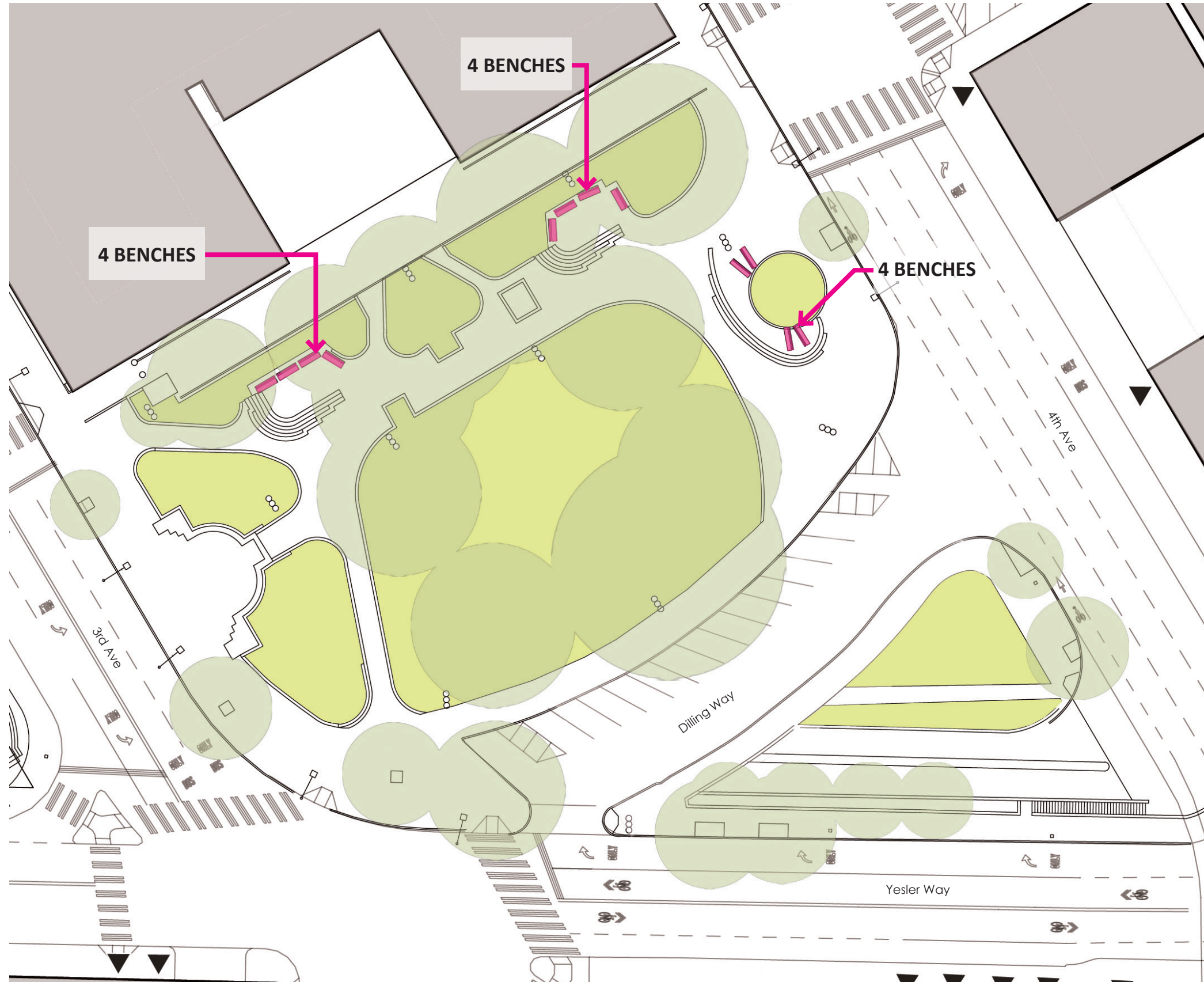
*preferred option from Parks staff, with center armrest



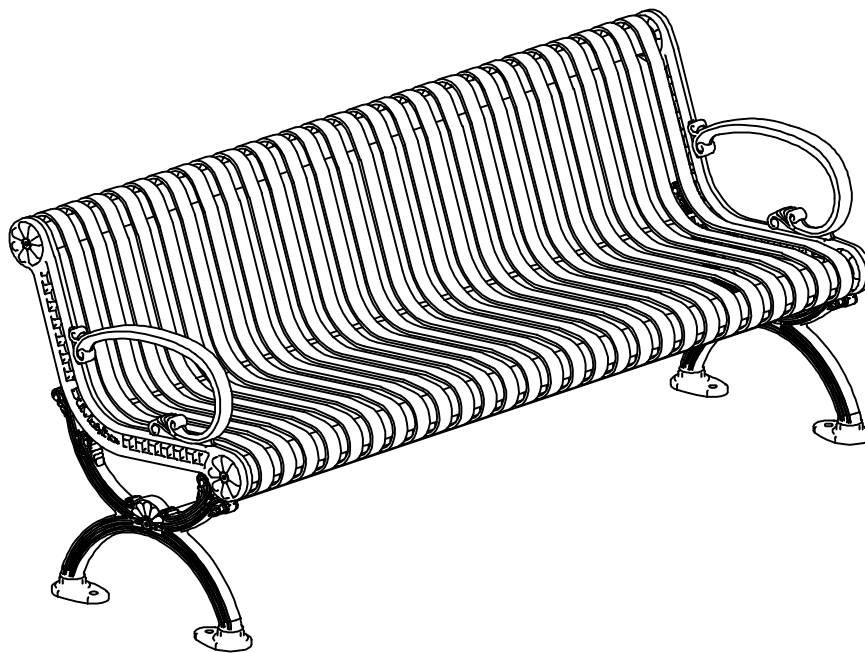
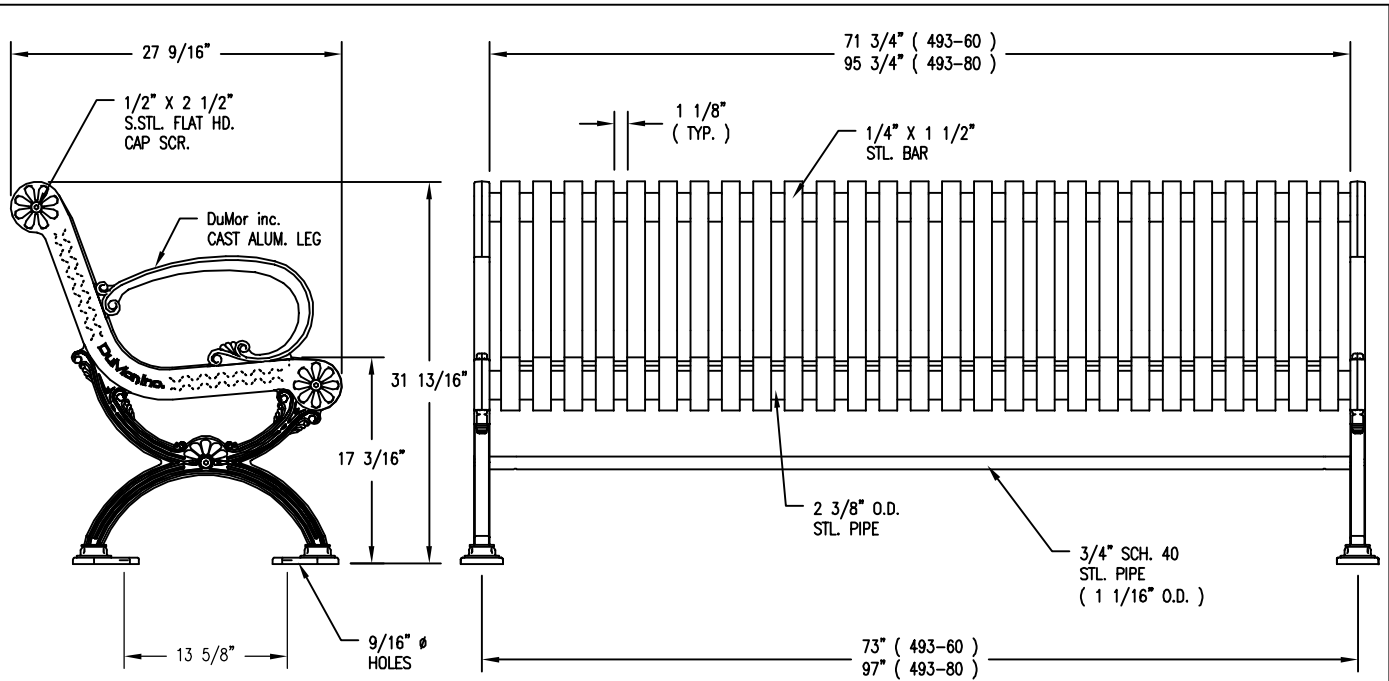
Landscape Forms - Plainwell Bench

- cast aluminum frame, aluminum seat
- powdercoat black finish available
- available in 6' length
- optional center armrest available
- surface mount tabs
- Unit Pricing: \$2720 - \$3360
- Lead Time: 5-7 weeks

CITY HALL PARK | PROPOSED BENCH LOCATIONS



APPENDIX | PRODUCT CUT SHEETS



NOTES

- 1.) ALL STL. MEMBERS COATED W/ ZINC RICH EPOXY THEN FINISHED W/ POLYESTER POWDER COATING.
- 2.) 1/2" X 3 3/4" EXPANSION ANCHOR BOLTS PROVIDED.

LENGTH OPTIONS

- 6' BENCH
- 8' BENCH



BENCH

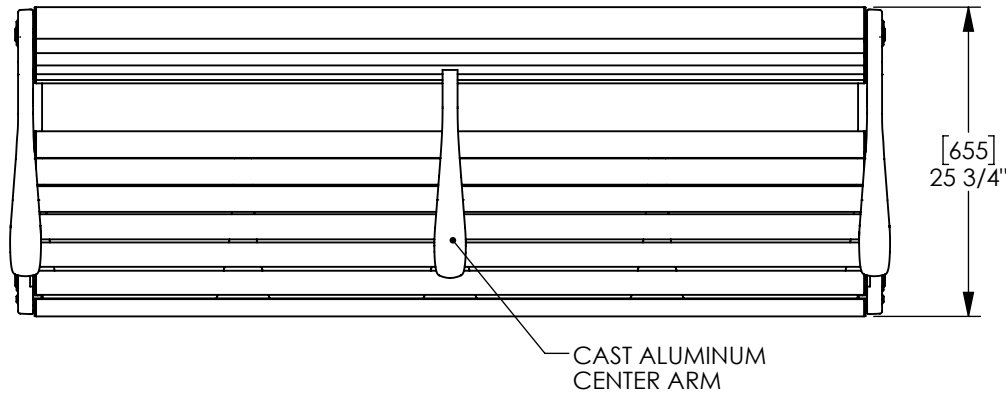
DATE DRAWN : 10/08/15
 DRAWN BY : RDH
 DATE REV. :
 REV. BY :

REV.
A

DRAWING
NUMBER

493 SERIES

SHEET
1 OF 2



NOTE:
 FREESTANDING OR SURFACE MOUNT
 OPTIONS. CORROSION-RESISTANT
 ANCHORING HARDWARE SUPPLIED BY
 OTHERS. Ø13/32" HOLES WITH COUNTERBORE
 PROVIDED FOR SOCKET HEAD CAP SCREWS.

