



# Bike and Scooter Parking for Pioneer Square

Kim Pearson, Shared Mobility Program Coordinator | Transit & Mobility Division

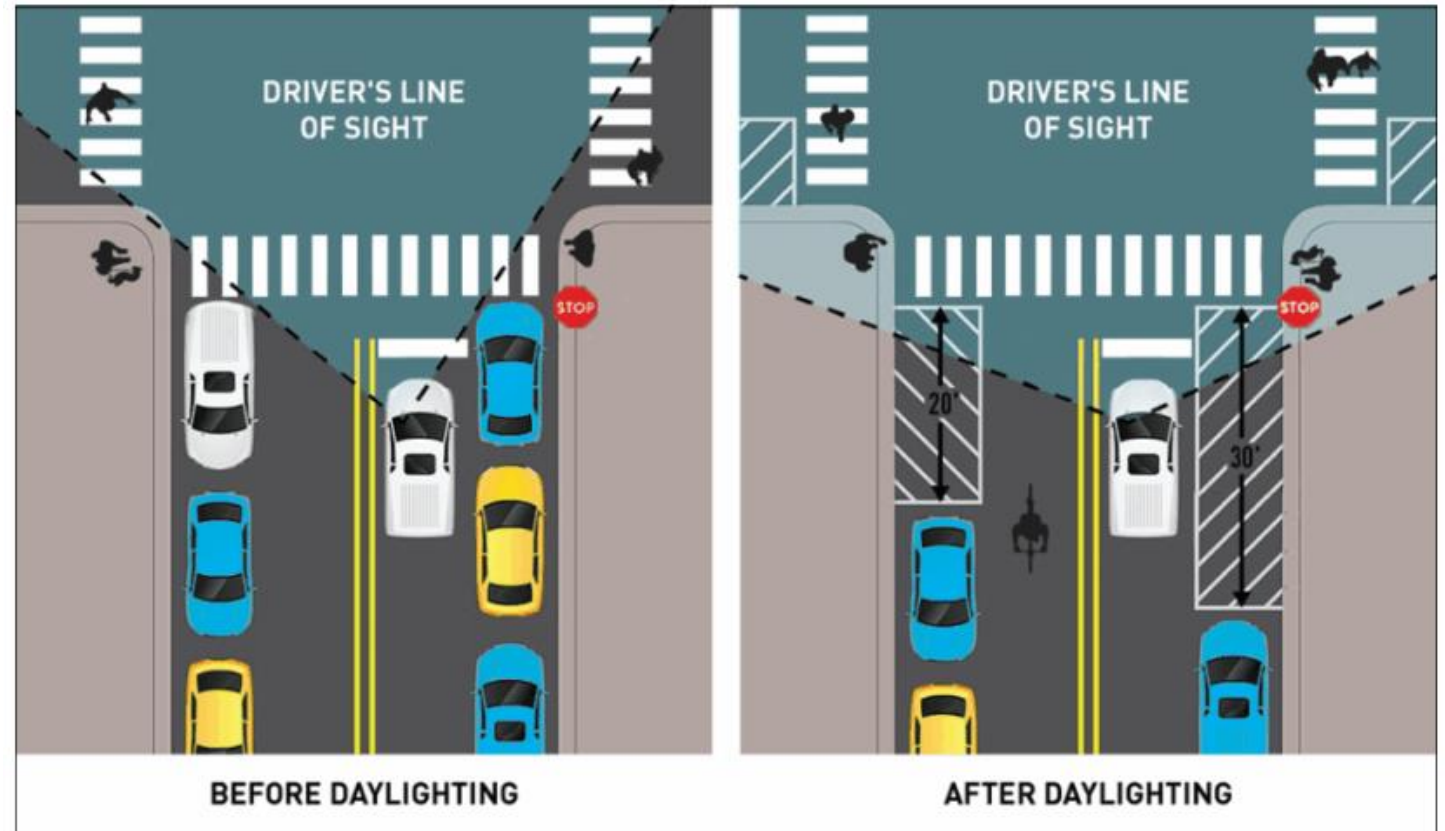
# Outline

- Project Goals
- About Shared Micromobility
- Selection Criteria
- Feedback Summary
- Updated Proposal
- Parking Designs
- Proposed Locations & Renderings
- Statement of Owner Consent



# Project Goals

- **Improve safety and accessibility** throughout Pioneer Square by:
  - Daylighting intersections to increase **visibility for all travelers**.
  - Providing **organized parking** for bikes and scooters, helping to ensure that pedestrian pathways are left clear.
- Promote **access to adjacent businesses**.



*Intersection daylighting increases visibility at crosswalks and intersections, allowing drivers to see a bigger area as they approach the intersection. Graphic adapted from [City of Lancaster, PA](#).*

# About Shared Micromobility

- Seattle's shared scooters and bikes are operated by shared micromobility vendor(s) via a permit program managed by the Seattle Department of Transportation.
  - Vendors follow guidelines regarding:
    - **Staging and rebalancing** devices
    - **Parking capacity** of scooter/bike share parking areas
    - **Geofencing requirements** as to where devices are allowed to park
- Scooter and bike share:
  - **Connects people** to and from work, transit, businesses, events, school, and more
  - Provides a **climate-friendly** way to get around without a car
  - Is an **efficient** use of space on the roads and while parked
  - Increases **equitable transportation access**
- In 2025, over **1.1 million unique riders** took over **10.5 million trips**
  - 275,000 of these trips ended in Pioneer Square north of King St
    - ~2.6% of total trips in Seattle in 2025 ended in the project area

# Corral Location Selection Criteria

We iterated our approach to selecting locations for on-street corrals to be installed in 2026.

- **Step 1:** We identified potential locations based on transportation data as well as resident feedback, including:
  - T-bone/angle, pedestrian, and bike collisions
  - Micromobility trip-end data that shows where people are finishing their trips
  - Find It, Fix It and SDOT staff-identified locations for misparked scooters and bikes
  - Proximity to transit and bike facilities
  - Proximity to hotels and businesses
- **Step 2:** Engagement with the public.
  - We narrowed our scope to prioritize certain locations for installation before the 2026 World Cup based on where we have received fewer concerns.

# Vision Zero Collision Data (2020-2025)

Intersections	Angle Collisions	Pedestrian Collision	Bicycle Collision
WESTERN AVE AND YESLER WAY			1
1 <sup>ST</sup> AVE AND CHERRY ST			
1 <sup>ST</sup> AVE AND YESLER WAY	5	1	1
1 <sup>ST</sup> AVE S AND S JACKSON ST	6		1
1 <sup>ST</sup> AVE S AND S KING ST	29	1	
1 <sup>ST</sup> AVE S AND S MAIN ST		1	
1 <sup>ST</sup> AVE S AND S WASHINGTON ST		2	
OCCIDENTAL AVE S AND YESLER WAY			2
OCCIDENTAL AVE S AND S WASHINGTON ST			1
OCCIDENTAL AVE S AND S MAIN ST			1
OCCIDENTAL AVE S AND S JACKSON ST	1		
2 <sup>ND</sup> AVE EXT S AND S JACKSON ST	1	1	
2 <sup>ND</sup> AVE S AND S MAIN ST		3	
2 <sup>ND</sup> AVE S AND S JACKSON ST	3	4	1
TOTAL	44	12	6

# Current Parking Status\*

- **Daily Device Presence and Trip Ends (July to September 2025)**
  - Average Shared Device Presence: 254 devices
  - Event Day Shared Device Presence: 462+ devices
  - Average Daily Trip Ends: 995
- **Average Daily Trip Ends (July 2025)**
  - Overall: 866
  - Event Days (Sports Games and Concerts): 1,244
  - Non-Event Days: 711
- **Bike Parking Analysis**
  - Current Capacity: 204 spaces (102 bike racks) and 38 spaces from corrals pending approval
  - Bike Parking Deficit: Over 258 spaces on event days; there are over 200 event days per year.
- **Find It, Fix It Parking Complaints:** 180+ since 2023

*\*These metrics were calculated for Pioneer Square north of King St.*



# Feedback & Engagement

- After the Preservation Board meeting, we performed the following outreach activities:
  - Responding to all comments received to the board
  - Hosting a community drop-in session on March 16 to review a subset of corrals about which we had received some positive or neutral feedback
  - Delivering letters to adjacent businesses and properties, and scheduling meetings with those stakeholders for more in-depth discussions
- This feedback helped us shape our proposal to pursue corrals where we had positive feedback from adjacent businesses and community groups.

# Location-Specific Feedback

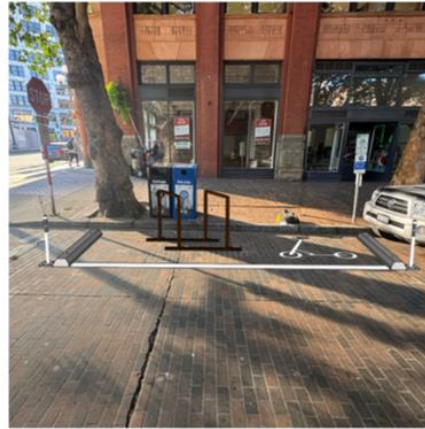
- At the March 16 drop-in session, we received:
  - 12 comments in support of specific corrals and/or asking for more capacity at specific locations
  - 2 comments from business or property owners with concerns about specific corral locations
  - 1 comment to request a corral relocation



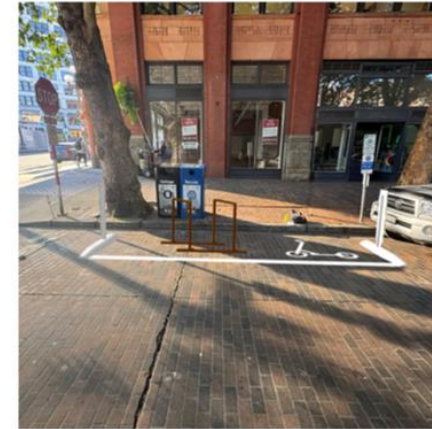
# Additional Community Drop-In Session Feedback

- 44% of total comments stated they would want more than 4 corrals to be installed by the 2026 World Cup
- 100% of comments about the corral design options preferred option 1 (original design)

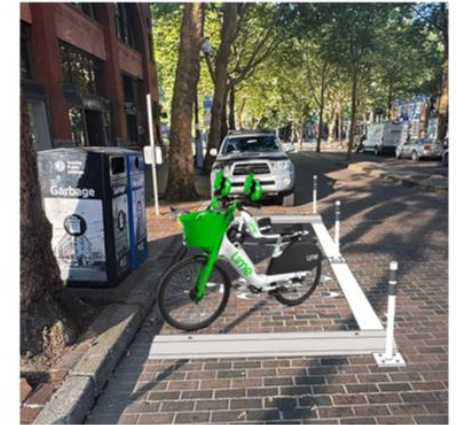
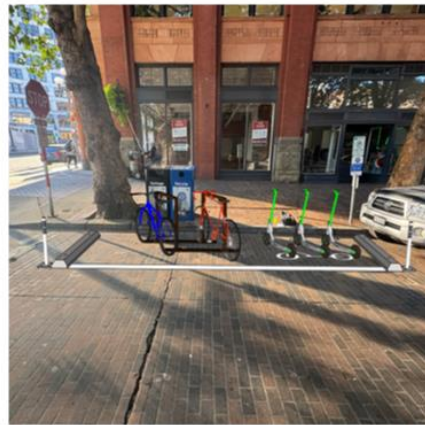
**1** Corral with Two Custom Pioneer Square Bike Racks



**2** Corral with Object Marker on Tuff Curbs

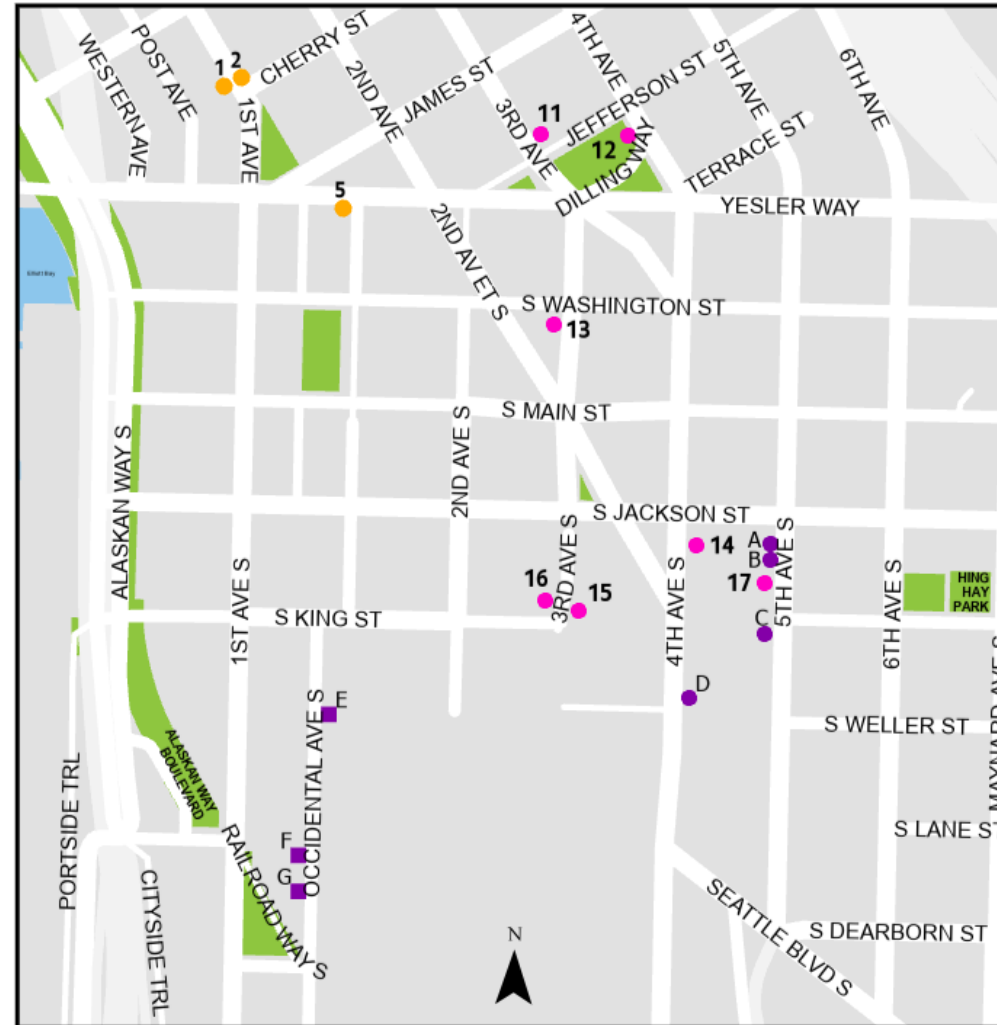


**3** Corral Without Racks



# Updated Proposal - Bike and Scooter Parking Locations

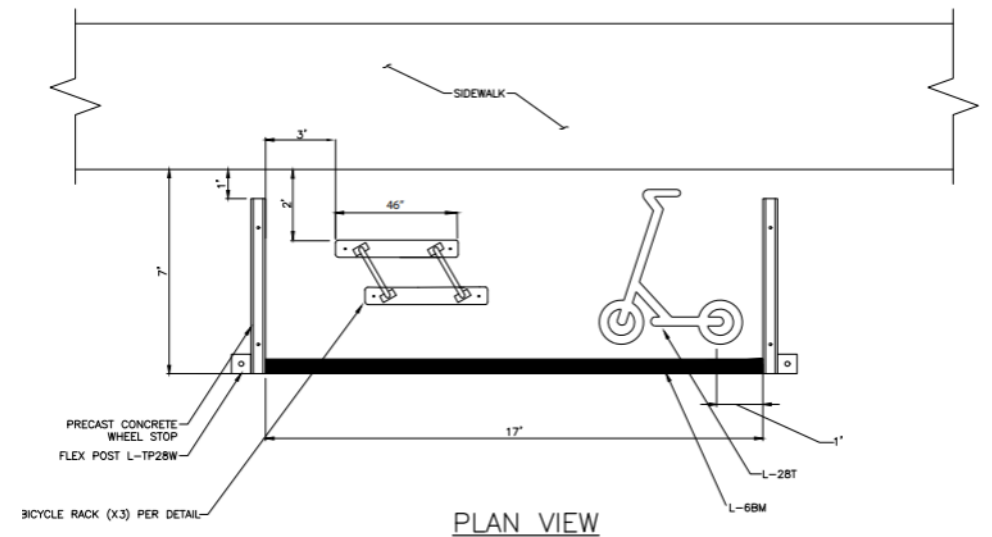
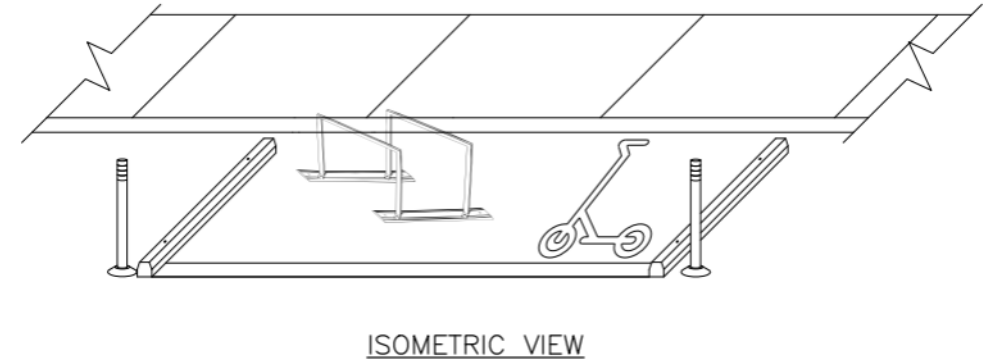
- SDOT reduced the number of on-street corrals *in review* for installation, from 21 to 10 locations
  - Locations were discussed at the community drop-in session at Populus Seattle on March 16
- Updated Proposal:
  - On-street Corrals: 3 locations
  - On-sidewalk Zones: 7 locations
- These parking areas will provide ~100 spaces for shared scooters and bikes



- Seeking approval to install on-street corrals
- Seeking approval to install on-sidewalk corrals
- Previously installed on-sidewalk corrals to remain
- Previously installed on-sidewalk corrals to remove

# On-street Corral Design

- Two custom Pioneer Square bike racks on custom rails from the same manufacturer, Urban Accessories
- One 6' scooter legend in the free-floating area
- Two concrete wheel stops at either end of the corral
- Two white omega posts



# On-street Corral Examples: Ballard Avenue Landmark District



# PSQ On-Street Corral Rendering Example



# On-street Corral Installation

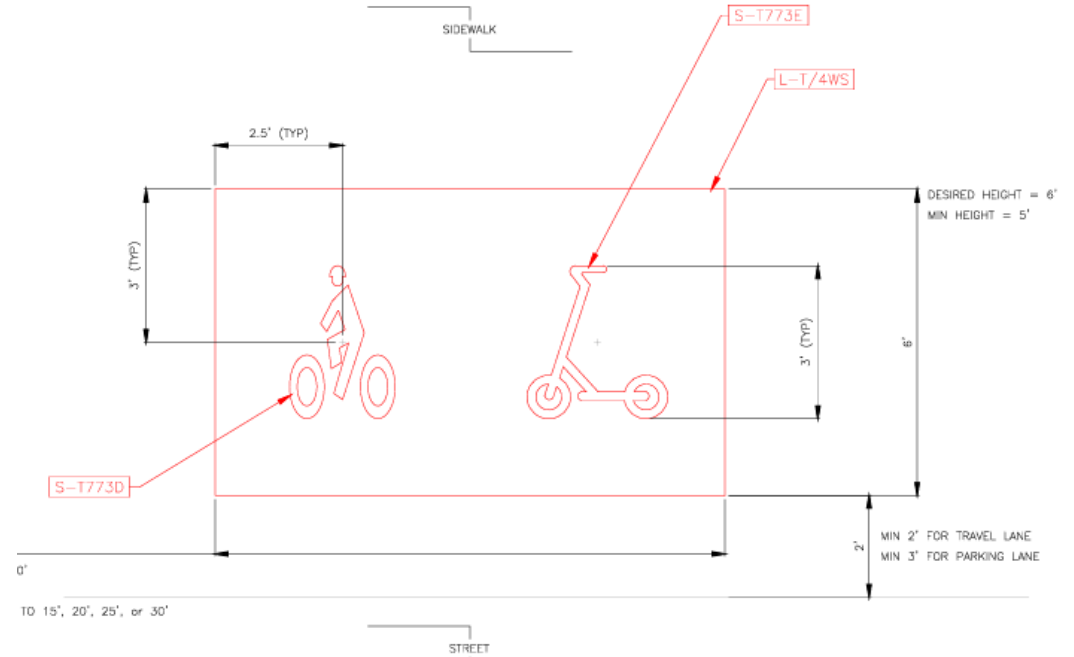
- On-street corrals will be installed on asphalt roadway. Standard installation and maintenance practices will be followed:
  - 2 anchors per concrete wheelstop
  - 2 anchors per omega post
- SDOT standard for installing bike racks in Pioneer Square:
  - Hilti KWIK Bolt TZ Expansion Anchor  $\frac{1}{2} \times 3 \frac{3}{4}$  with tamper proof nut
  - Will imbed at a depth of less than 3 inches
  - No impact on areaways



# On-sidewalk Zone Design

Flexible furniture zone design:

- 4' minimum height, 8' minimum width box using 4" white thermoplastic outline
- One or two 3' scooter or bike person legends



# On-sidewalk Zone Built Examples



# Materials

- Custom Pioneer Square Bike Racks
- Matching Iron Rails
- Concrete wheel stops
- White 28" omega posts
- 6' scooter marking (for on-street corral)
- 3' scooter and bike person markings (for on-sidewalk zones)



# Omega Posts

- SDOT switched from tuff post to omega post in 2022 for a more resilient vertical delineator



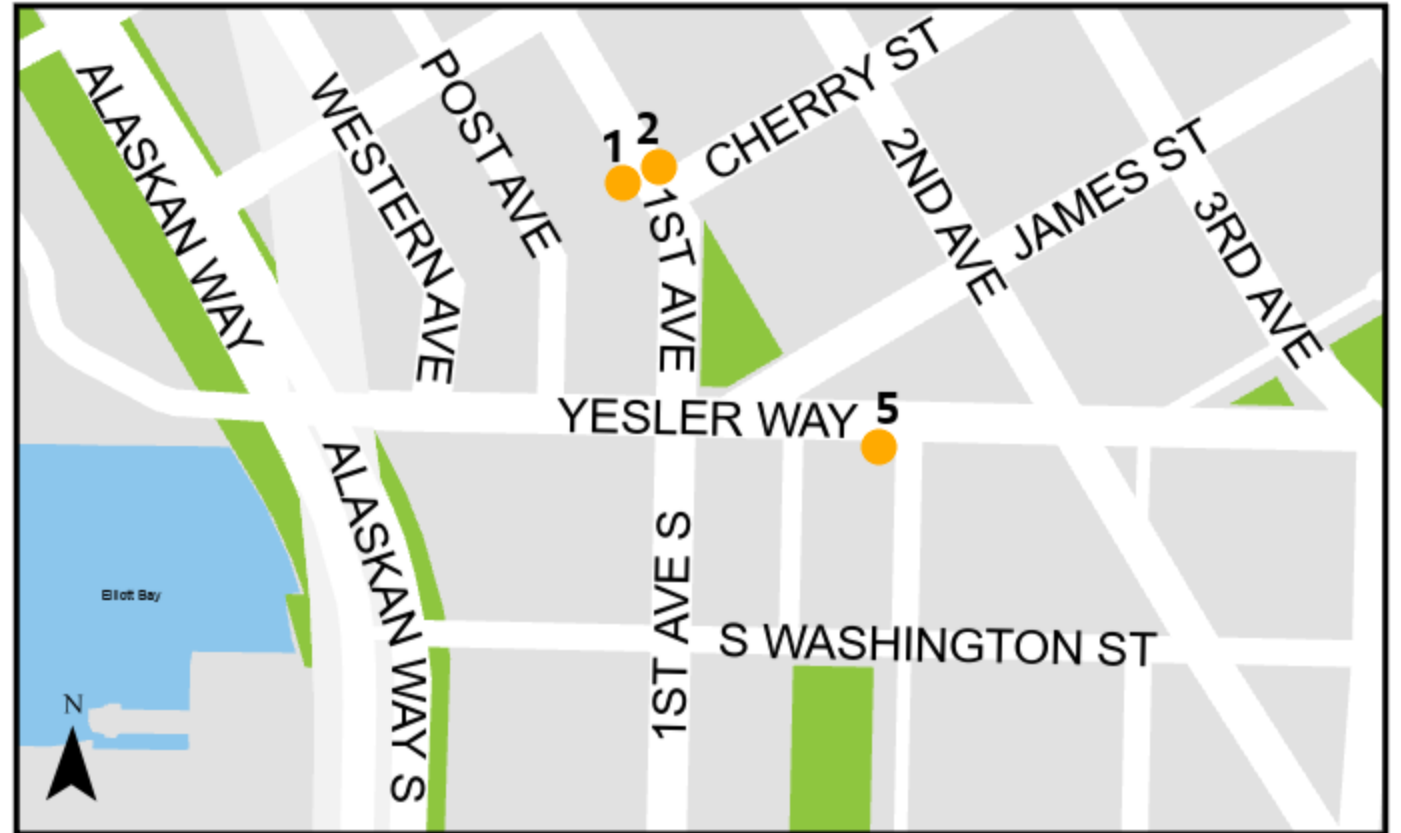
Bike corral with tuff posts (black base)



Bike corral with omega posts (white base)

# On-Street Bike and Scooter Parking Locations

- 1 - 1<sup>st</sup> Ave S and S Cherry St, southbound approach
- 2 - 1st Ave S and S Cherry St, northbound departure
- 5 - Yesler Way and Occidental Ave S, eastbound approach



● Seeking approval to install on-street corrals

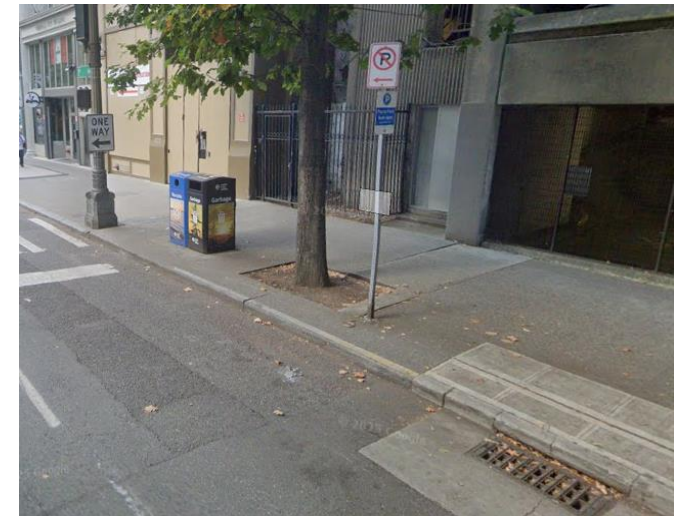
# Location #1 - 1<sup>st</sup> Ave / Cherry St, SB approach



Map



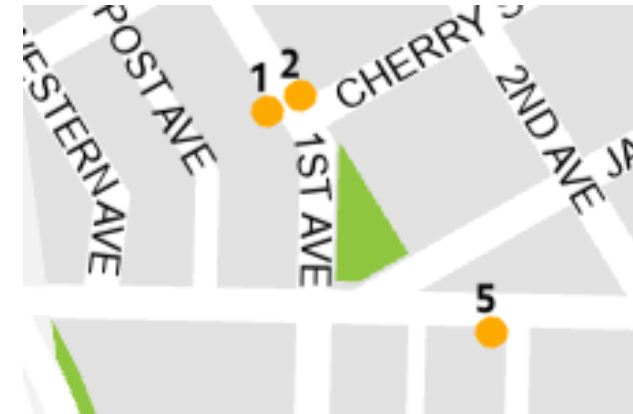
Area Reference



# Location #2 - 1<sup>st</sup> Ave / Cherry St, NB departure



Map



Area Reference



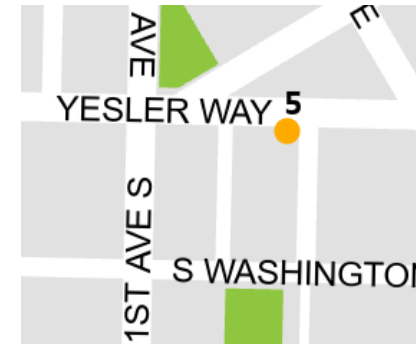
# Locations #1 and #2 Feedback - 1st Ave S / S Cherry St

- The Alliance for Pioneer Square supported these location as this intersection is a gateway into the neighborhood.
- Adjacent businesses were neutral about the corrals.
- No other feedback received.

# Location #5 – Yesler Way and Occidental Ave, EB



Map



Area Reference

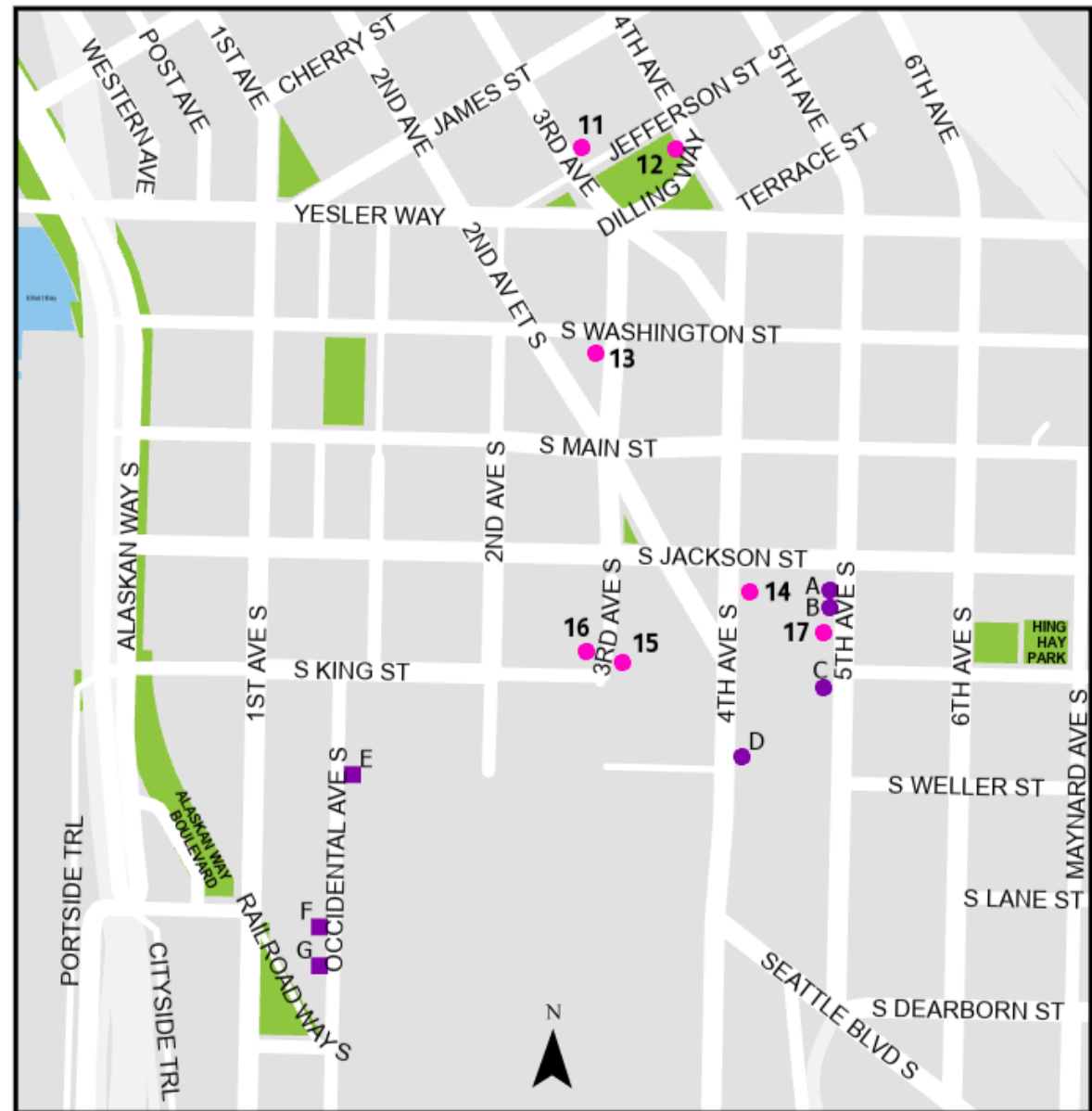


# Location #5 Feedback - Yesler Way / Occidental Ave S

- An adjacent business is very supportive of this location, stating that the corral will be effective at supporting multi-modal transportation as well as preventing people from parking cars in the No Parking area.
- No other feedback received.

# On-sidewalk Parking Locations

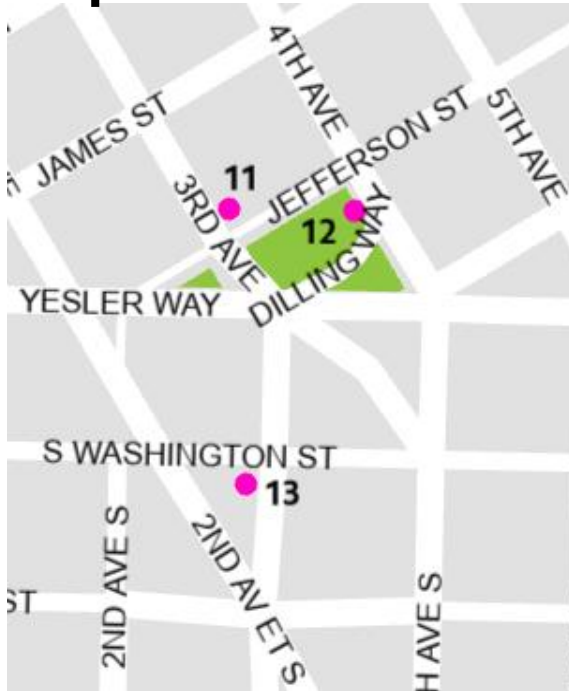
- 11 – 3rd Ave and Jefferson St
- 12 - 4th Ave and Dilling Way
- 13 - 3rd Ave S and S Washington St
- 14 - 4th Ave S / S Jackson St
- 15 – S King St / King St Station (SE corner)
- 16 - S King St / King St Station (NW corner)
- 17 – 5th Ave S and S King St
- A – 5th Ave S / S Jackson St
- B – 5th Ave S / S Jackson St
- C – 5th Ave S / S King St
- D – 4th Ave S / S Weller St
- E – Occidental Ave S (To be removed)
- F – Occidental Ave S (To be removed)
- G – Occidental Ave S (To be removed)



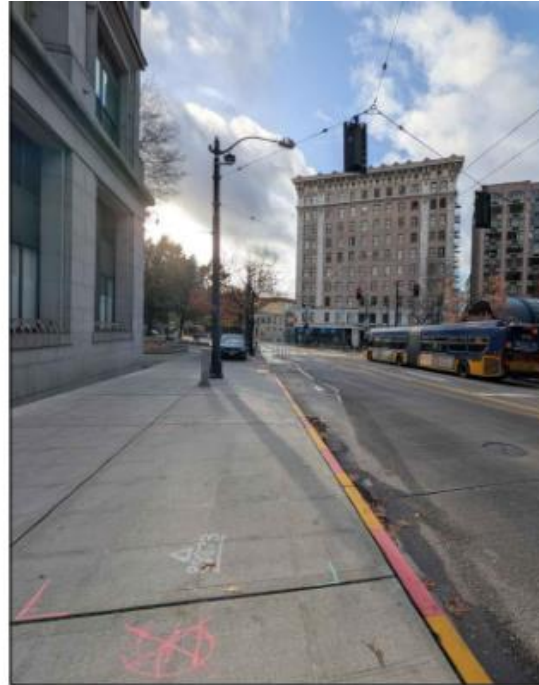
- Seeking approval to install on-sidewalk corrals
- Previously installed on-sidewalk corrals to remain
- Previously installed on-sidewalk corrals to remove

# Location #11 - 3<sup>rd</sup> Ave / Jefferson St

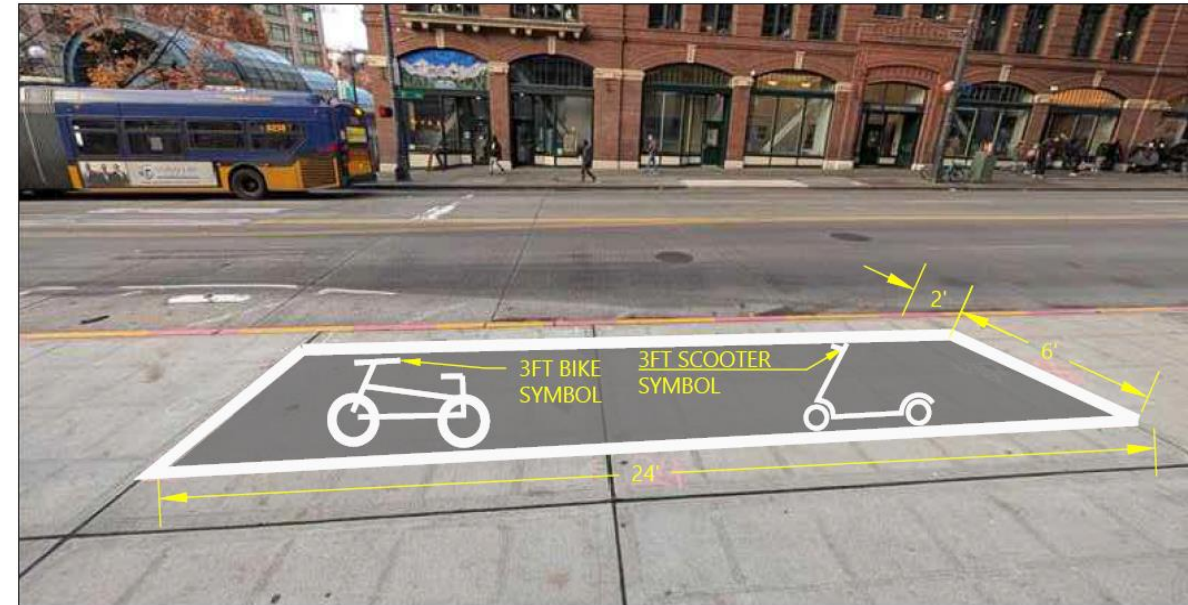
Map



Area Reference

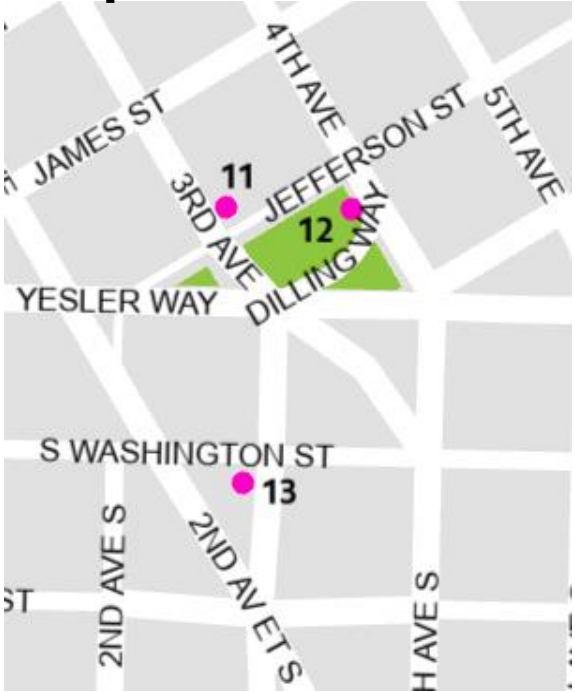


Proposed Layout



# Location #12 - 4<sup>th</sup> Ave / Dilling Way

Map



Area Reference

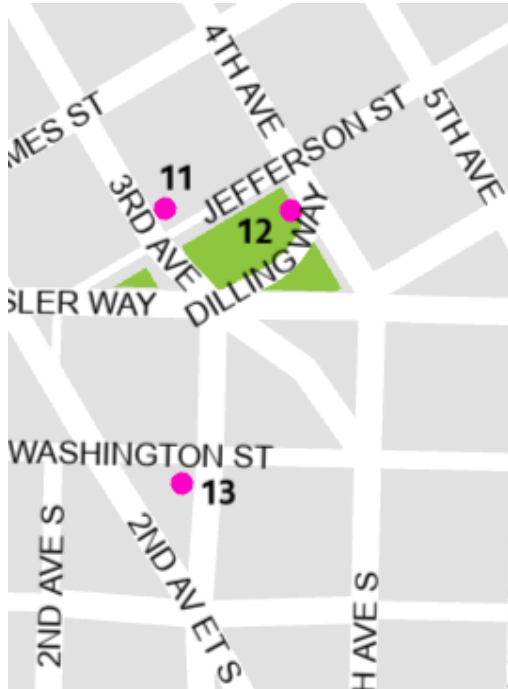


Proposed Layout



# Location #13 - 3<sup>rd</sup> Ave S / S Washington St

Map



Area Reference



Proposed Layout



15' x 6' parking zone, 2' from curb

# Location #14 - 4<sup>th</sup> Ave S / S Jackson St

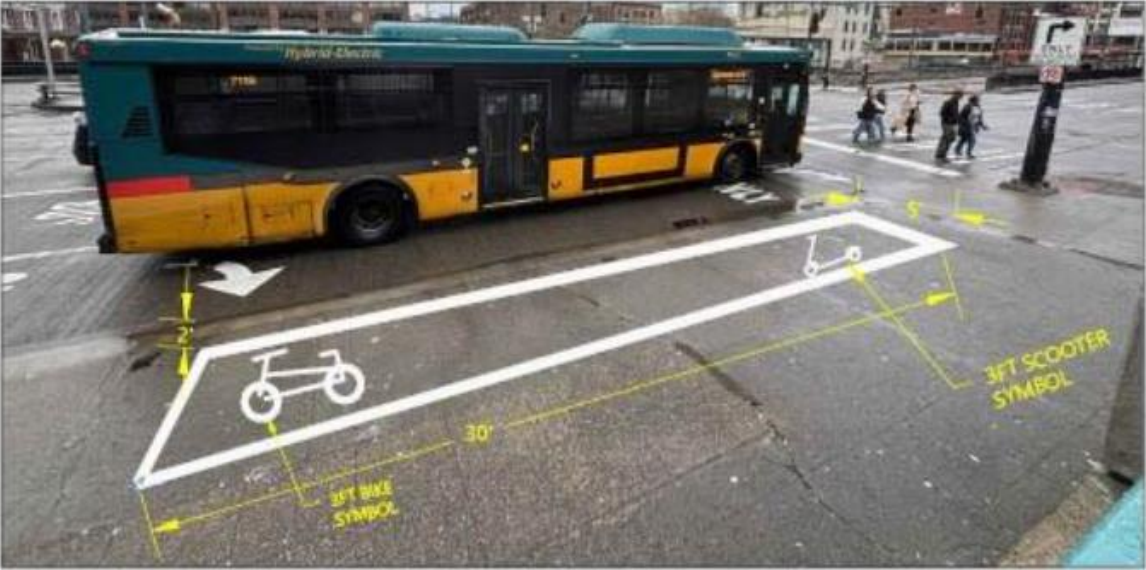
Map



Area Reference

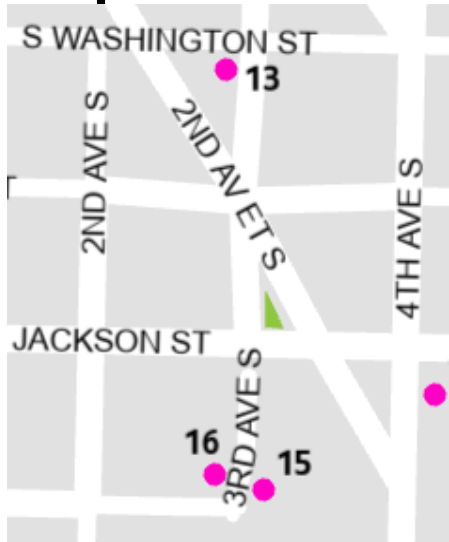


Proposed Layout



# Location #15 - S King St / King St Station, southeast corner

## Map



## Area Reference



## Proposed Layout



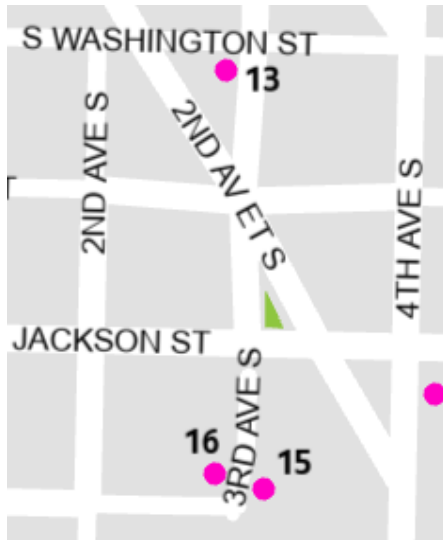
6' x 20' box

2 bike racks, 3' and 5' from the box

1 3' bike person symbol, 1 3' scooter symbol

# Location #16 - S King St / King St Station, northwest corner

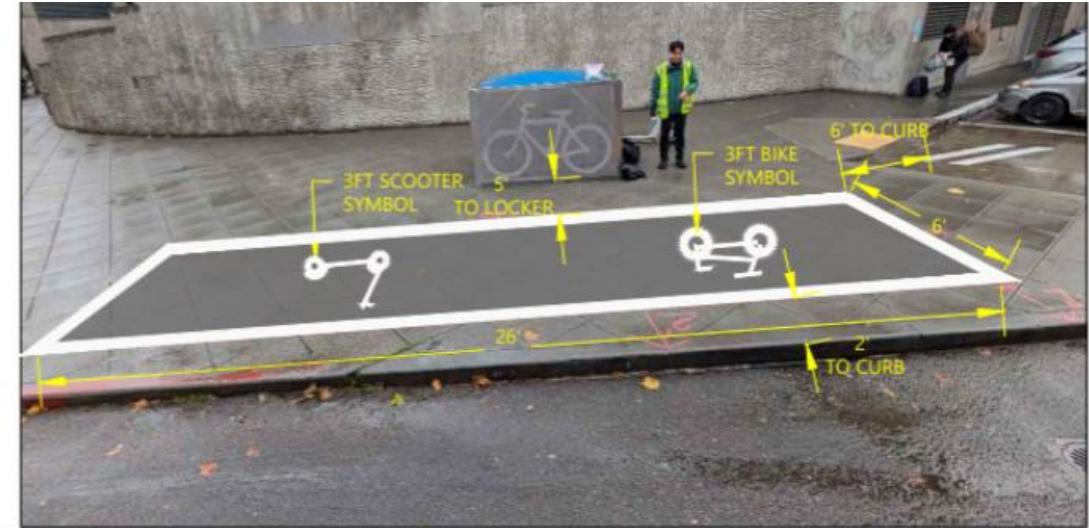
## Map



## Existing Conditions



## Proposed Layout



# Location #17 - 5<sup>th</sup> Ave S / S King St

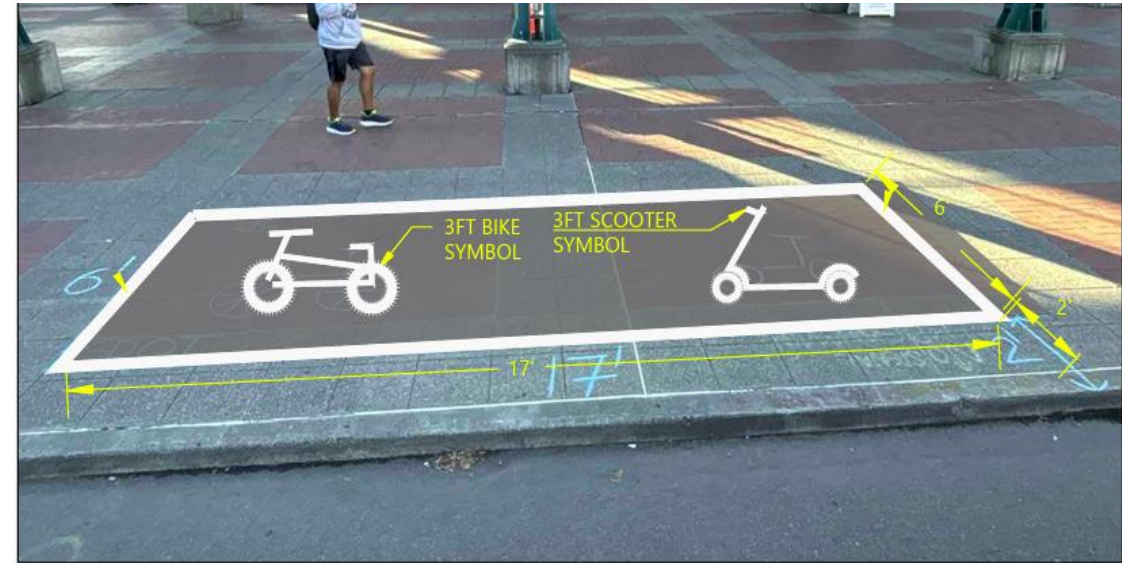
## Map



## Existing Conditions

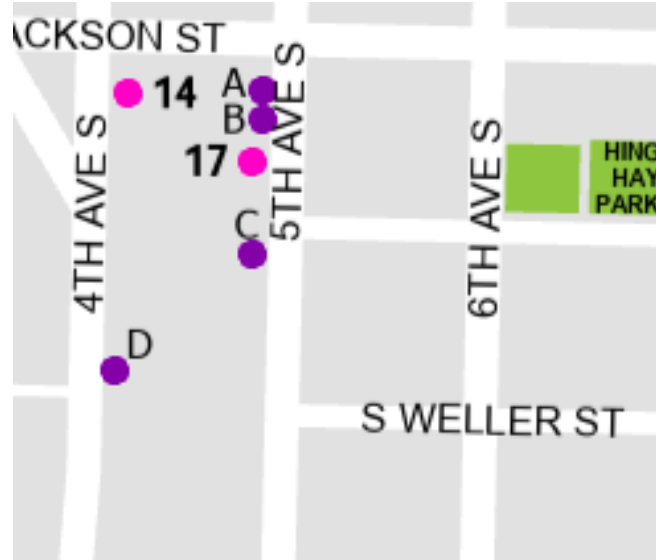


## Proposed Layout



# Locations A and B - 5<sup>th</sup> Ave S / S Jackson St

## Vicinity Map

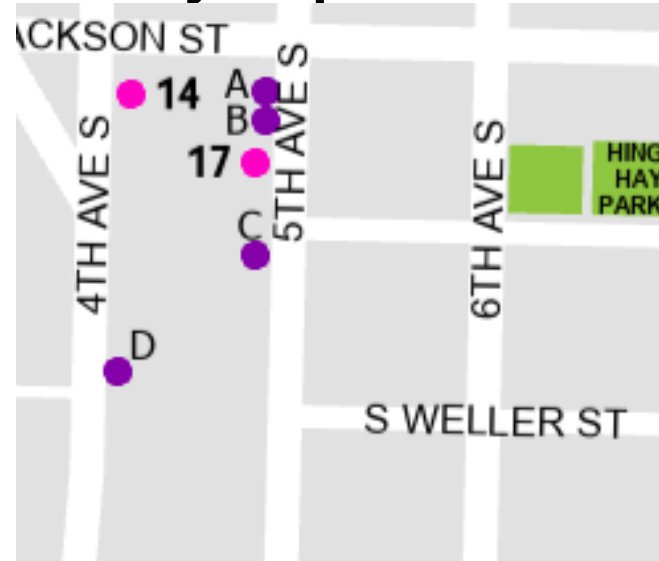


## Existing Conditions



# Location C - 5<sup>th</sup> Ave S / S King St

## Vicinity Map

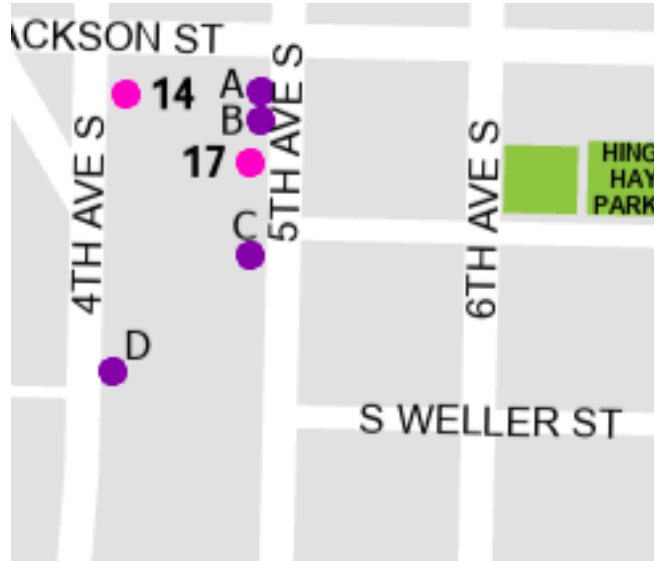


## Existing Conditions

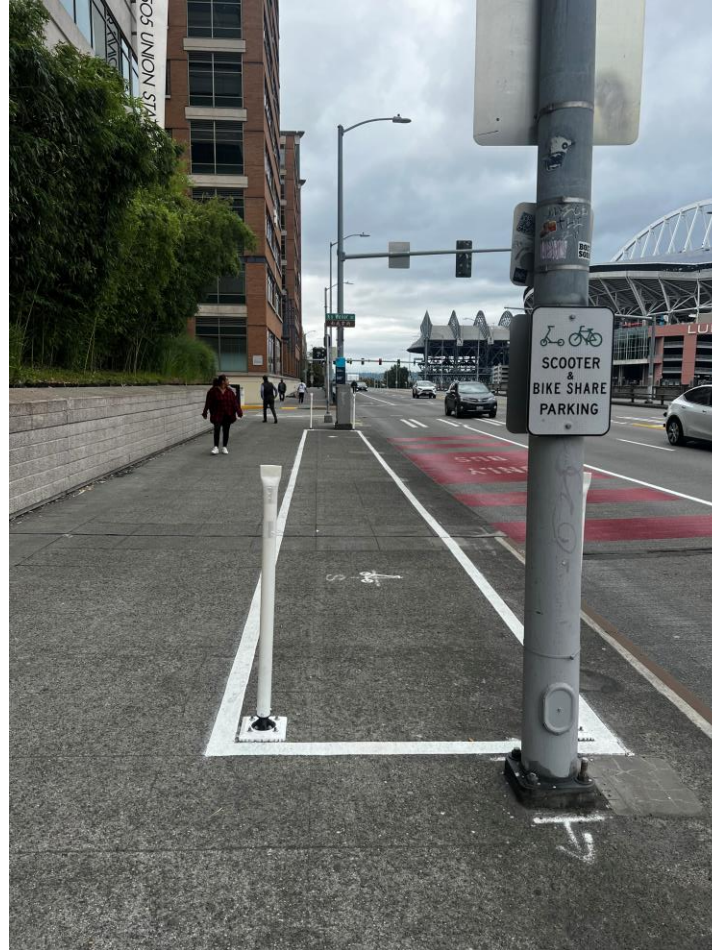


# Location D - 4<sup>th</sup> Ave S / S Weller St

## Vicinity Map

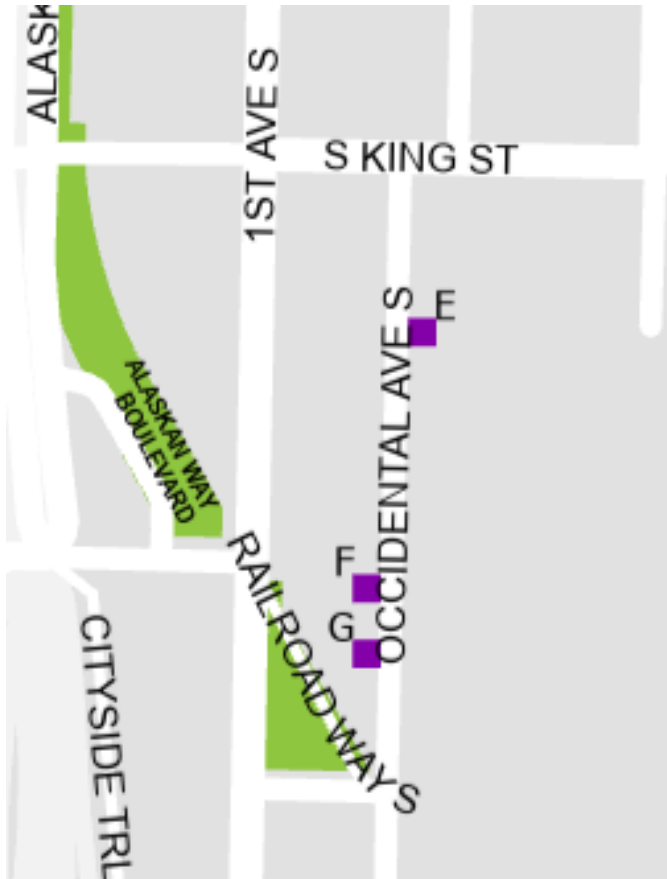


## Existing Conditions



# Location E - Occidental Ave S and S King St (to be removed)

Vicinity Map

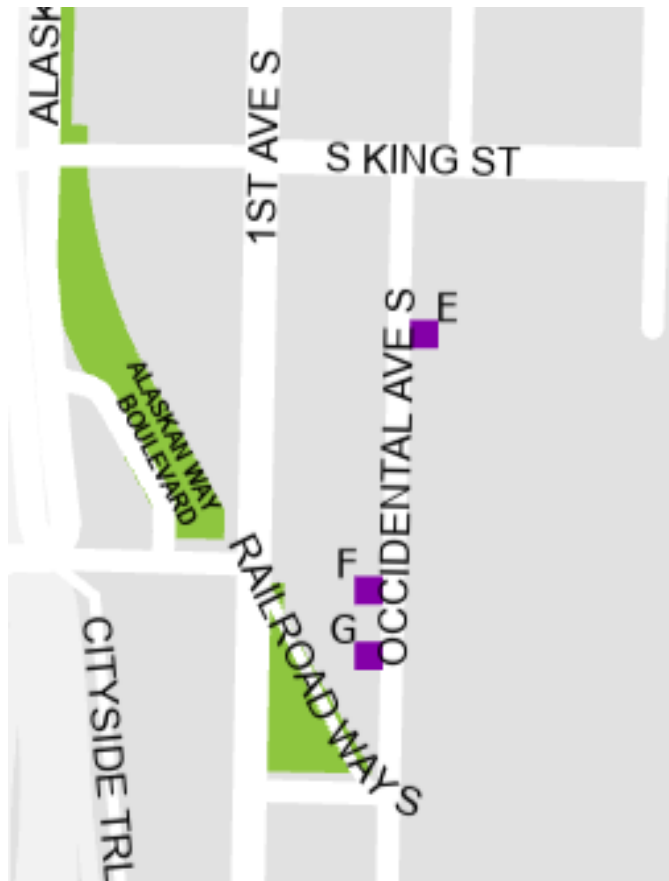


Existing Conditions

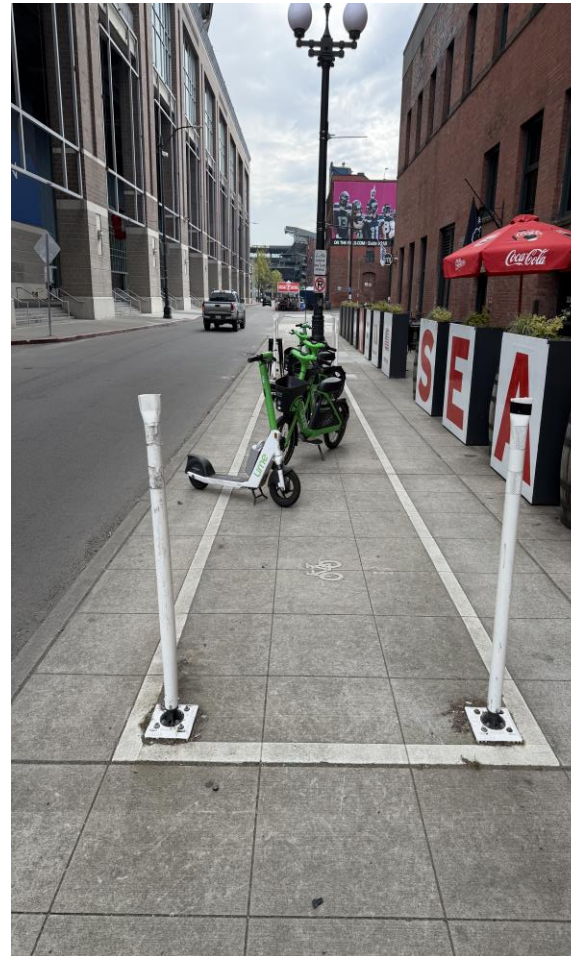


# Location F - Occidental Ave S and S Charles St (to be removed)

Map

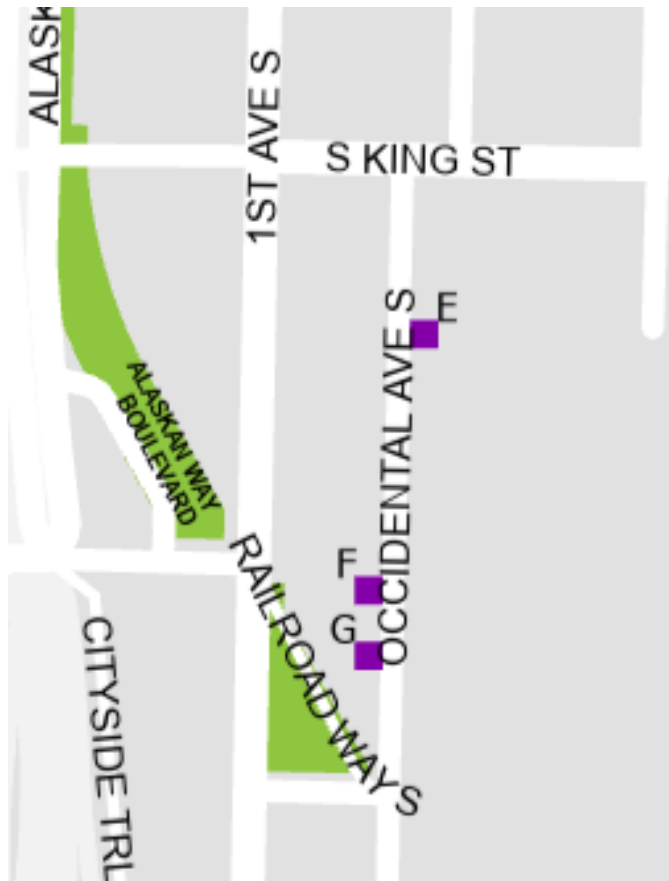


Existing Conditions



# Location G - Occidental Ave S and S Charles St (to be removed)

Map



Existing Conditions



# On-sidewalk Zones Feedback Summary

- No negative comments have been received about these locations
- At the community drop-in session, Positive comments were specifically received about Locations #12 and #14 - 4<sup>th</sup> Ave and Dilling Way and 4<sup>th</sup> Ave S and S Jackson St
- Amtrak requested locations #15 and #16.
- Sound Transit supports locations #14 and #17.

# Maintenance and Evaluation Plan

## Maintenance:

- SDOT will address community maintenance requests prioritized by safety needs.
- SDOT cleaning crews may also report corral maintenance needs to the appropriate crews if they observe repair needs.

## Evaluation:

- SDOT will collect before and after data related to misparked shared micromobility devices, safety data at intersections (at on-street corral locations), and shared micromobility use



# Statement of Owner Consent

The majority of proposed bike corral and zones are located in the public right-of-way managed by the Seattle Department of Transportation (SDOT).

The location outside of King St Station (#15) has received property owner authorization from Scott Jensen, SDOT.

All proposed installations have been approved by SDOT's Traffic Operations Division, which is responsible for reviewing changes to the right of way.

These 10 locations will provide parking for 82 shared micromobility devices as well as space for 20 personal bikes and scooters.

# Stay in touch



[kim.pearson@seattle.gov](mailto:kim.pearson@seattle.gov)



206.375.2344



[www.seattle.gov/scootershare](http://www.seattle.gov/scootershare)

