

DRAFT

PIONEER SQUARE PARK DESIGN DEVELOPMENT

PIONEER SQUARE PSPB MEETING 7/16/25



DRAFT



DRAFT



1955

DRAFT



1960

DRAFT



1974

DRAFT

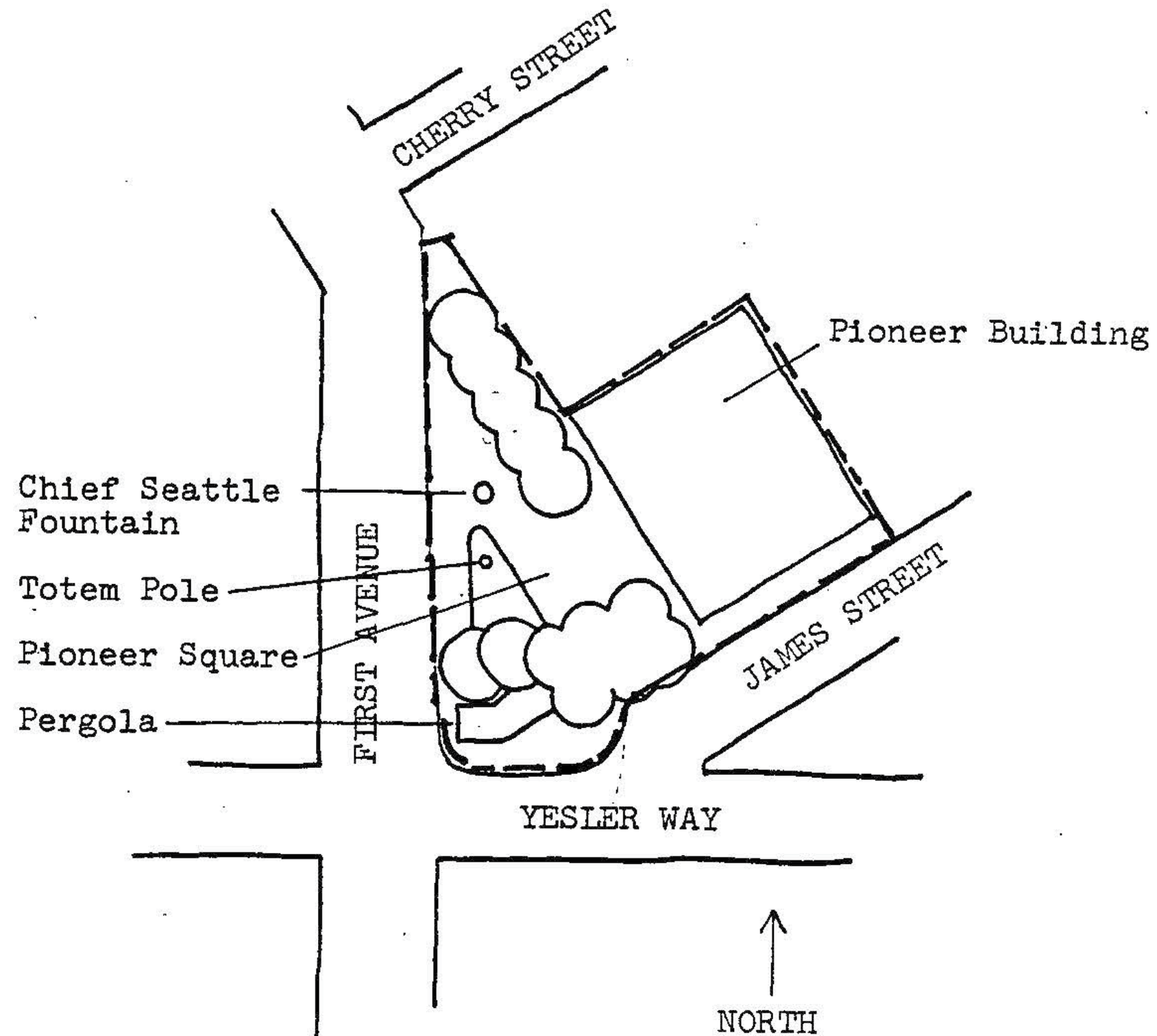


2003



2024

PROPOSED PIONEER SQUARE NATIONAL HISTORIC LANDMARK SITE



Key

- Item to be relocated or modified
- Item to be removed
- Item to be retained or reinstalled in place

II. Tabulated summary of features and regulatory agencies

	Build Date	Historic Register Status	NPS	ACHP	DAHP	SDOT	SDPR	PSHPB
Pergola + Associated Features	1909	Listed: NHL and NRHP	X	X	X		X	X
Totem Pole	1940	Listed: NHL and NRHP	X	X	X		X	X
Fountain	1909	Listed: NRHP			X		X	X
Sidewalk Prism Lights	1893	NRHP contributing characteristic			X	X	X	X
Historic Water Meter	c.1893	NRHP contributing characteristic			X		X	X
Historic Seattle City Light meter	c.1893	NRHP contributing characteristic			X		X	X
Found Monument	c.1893	NRHP contributing characteristic			X		X	X
Metal Catch Basins	c.1893	NRHP contributing characteristic			X		X	X
Tier 1 a.k.a. Heritage Trees*	c.1923	Heritage Tree; NRHP contributing characteristic			X	X	X	X
Tier 2 Trees	1973	NRHP contributing characteristic			X		X	X
Tier 3 Trees	Recent	Not Listed			X		X	X
Benches	1973	NRHP contributing characteristic			X		X	X
Cobblestones	1973	NRHP contributing characteristic			X		X	X
Triangle Fence	1973	NRHP contributing characteristic			X		X	X
3-Globe Light Standards	1973	NRHP contributing characteristic			X	X	X	X
5-Globe Light Standards	c.1974	NRHP contributing characteristic			X		X	X
"Day and Night" Sculpture	1989	Determined non-contributing					X	X
Commemorative Plaques	Post-2000	Not listed					X	X
Non-Heritage Plantings	Post-2000	Not listed					X	X
Street Furniture**	Post-2000	Not listed				X	X	X
Non-globe Street Lights	Post-2000	Not listed				X	X	X

EXISTING LAYOUT AND CHALLENGES

DRAFT

- Obscured Architecture
- Spatial Limitations
- Blocked Views
- No Access from “100% Corner”
- Underground Structures
- Social Challenges



What we heard:

1. Create a welcoming neighborhood gateway
2. Increase seating and social spaces
3. Improve sense of safety and lighting
4. Enhance connections and accessibility
5. Activate the space with events large and small
6. Respect historic and environmental context
7. Add a public restroom

DUWAMISH

1. Archeological Monitoring
2. Native Plants
3. Dark Sky Compliant Lighting

TLINGIT

1. Totem Pole Discussion pending, with City Agencies

DRAFT

PROPOSED DESIGN

EXISTING SITE PLAN

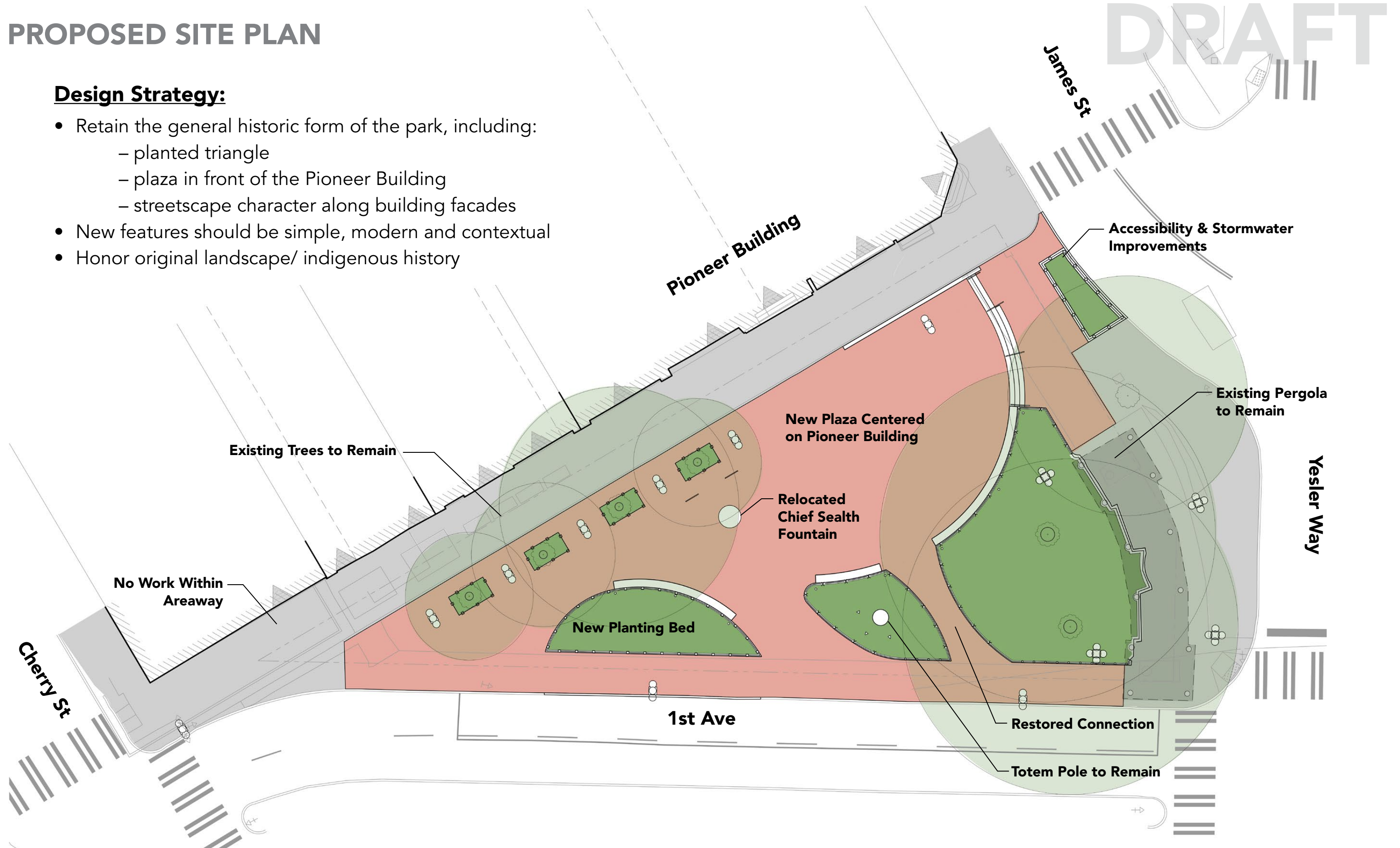
DRAFT



PROPOSED SITE PLAN

Design Strategy:



- Retain the general historic form of the park, including:
 - planted triangle
 - plaza in front of the Pioneer Building
 - streetscape character along building facades
- New features should be simple, modern and contextual
- Honor original landscape/ indigenous history



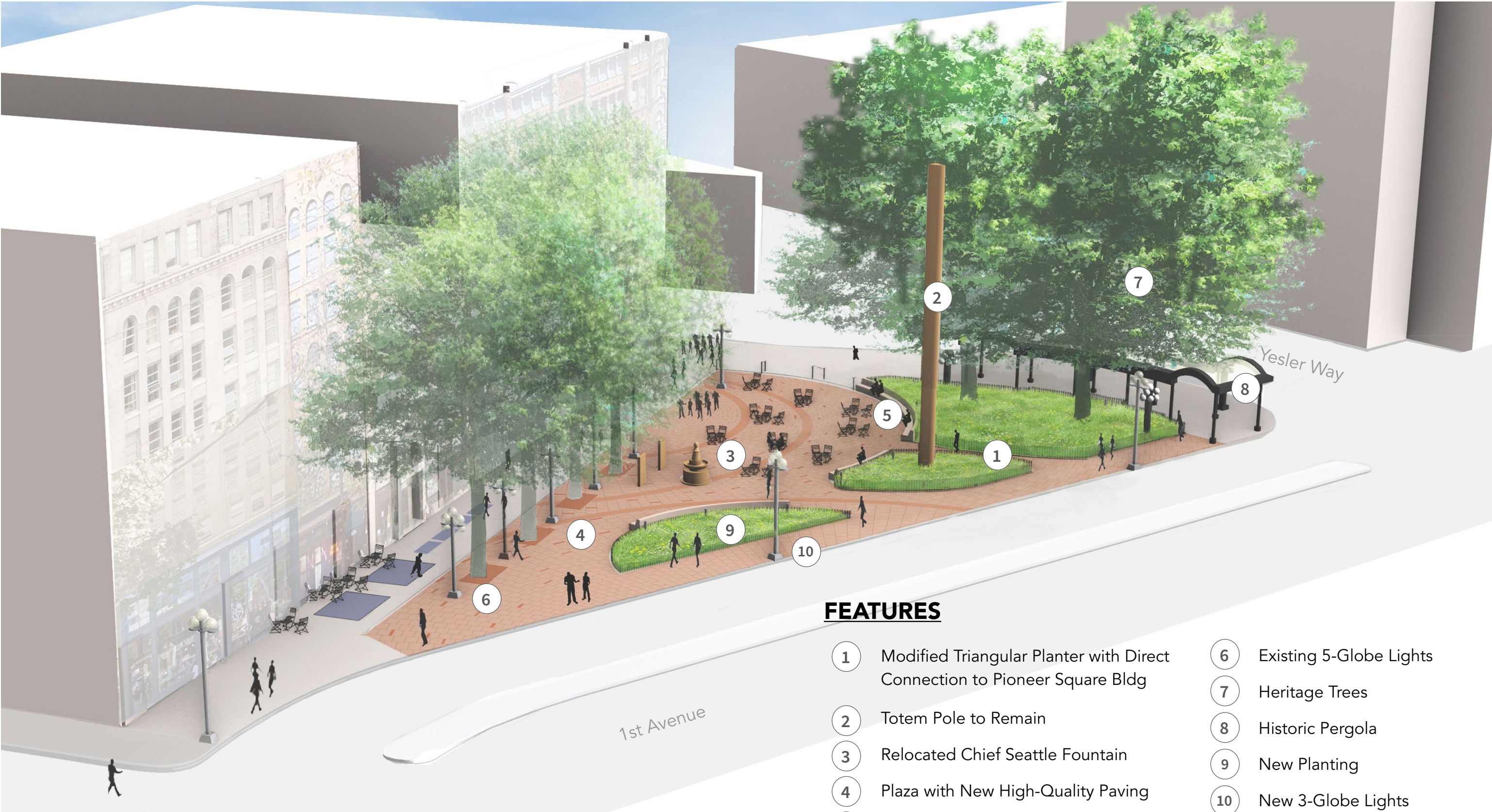
TREE PRESERVATION

DRAFT

LEGEND

-  Existing Tier 3 Tree To Be Removed And Replaced
(3:1 Replacement Required; Locations to be Discussed with SPR)
-  Existing Tree To Be Preserved





Not to Scale

FEATURES

- | | | | |
|---|---|----|-------------------------|
| 1 | Modified Triangular Planter with Direct Connection to Pioneer Square Bldg | 6 | Existing 5-Globe Lights |
| 2 | Totem Pole to Remain | 7 | Heritage Trees |
| 3 | Relocated Chief Seattle Fountain | 8 | Historic Pergola |
| 4 | Plaza with New High-Quality Paving | 9 | New Planting |
| 5 | New Seating | 10 | New 3-Globe Lights |



View from 1st Ave



View from James St

TRIANGLE PLANTER

DRAFT

1893-1923: Triangle lawn and square, with street

1923-1973: London plane trees + planting islands + cut-through within paved triangle, with street

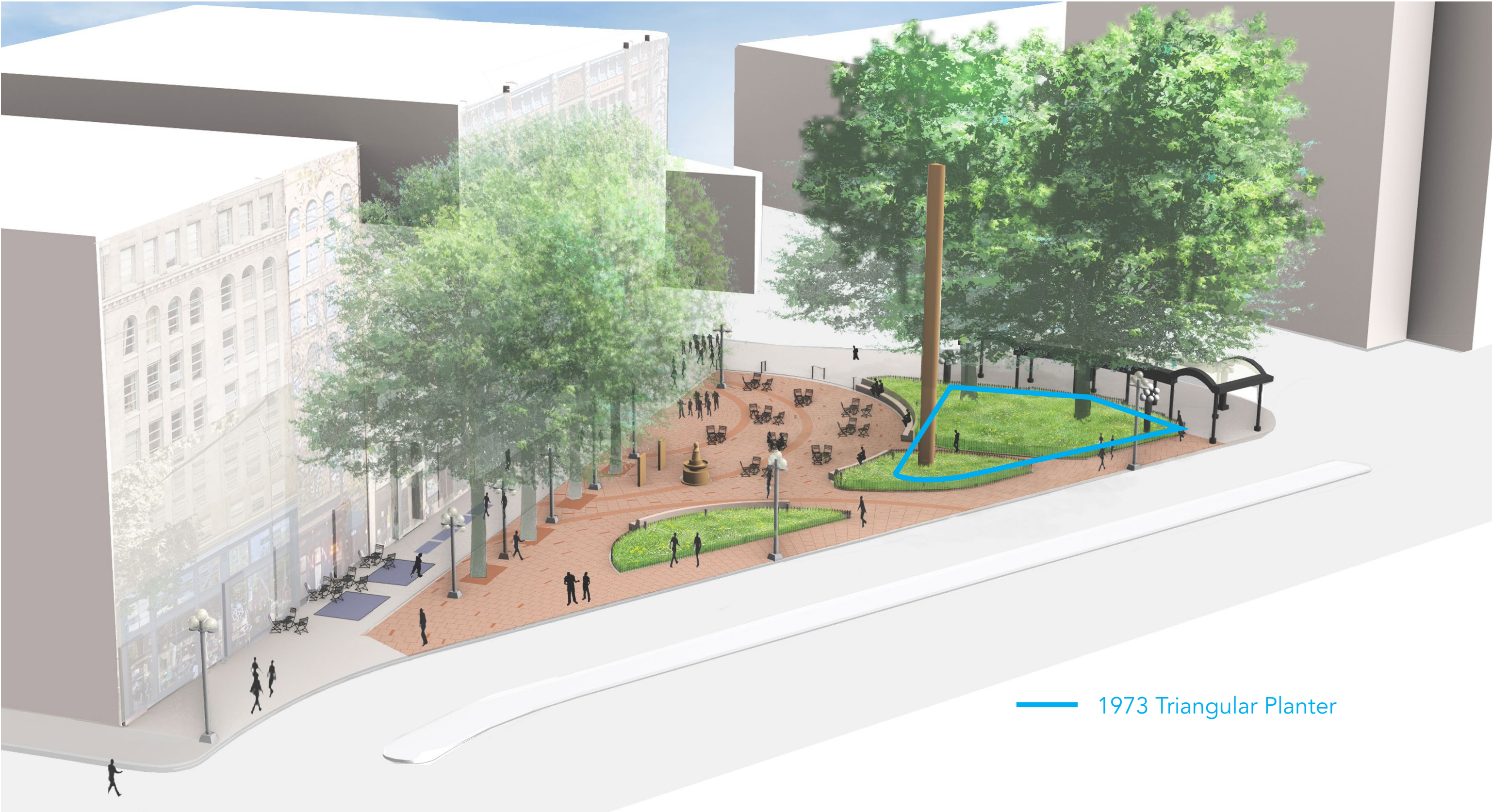
1973 – PRESENT: Modified triangle planter + plaza in place of old street

HISTORIC REGISTER STATUS:

Not listed in the NRHP (National Register of Historic Places); not labeled on the NRHP site plan

PROPOSAL: Retain planter but modify form





1973 Triangular Planter

Not to Scale

1893 – 1923: Original triangle fencing

1923 – 1973: Triangle fencing removed, fencing added around totem pole only

1973 – PRESENT: New triangle fencing in modified shape to wrap around relocated totem pole

HISTORIC REGISTER STATUS:

NRHP (National Register of Historic Places)-contributing characteristic but not listed in the NRHP

PROPOSAL: Partial removal of fence replaced in kind to align with updated planter form; add new complementary low fence at new planter





Not to Scale

LIGHTING

DRAFT

1909: (3) 5-globe lights added by totem pole

1910: (4) 9-globe lights added during construction of pergola + (1) 5-globe light added at building

1920s: All (3) 5-globe lights from 1909 removed

1973: (5) 5-globe lights along building added + (2) new 5-globe lights added in front of totem pole

1975: (1) 3-globe light added at Cherry + 1st Ave corner

POST-2000s: Non-globe street lights added (totem pole uplights, catenary lights)

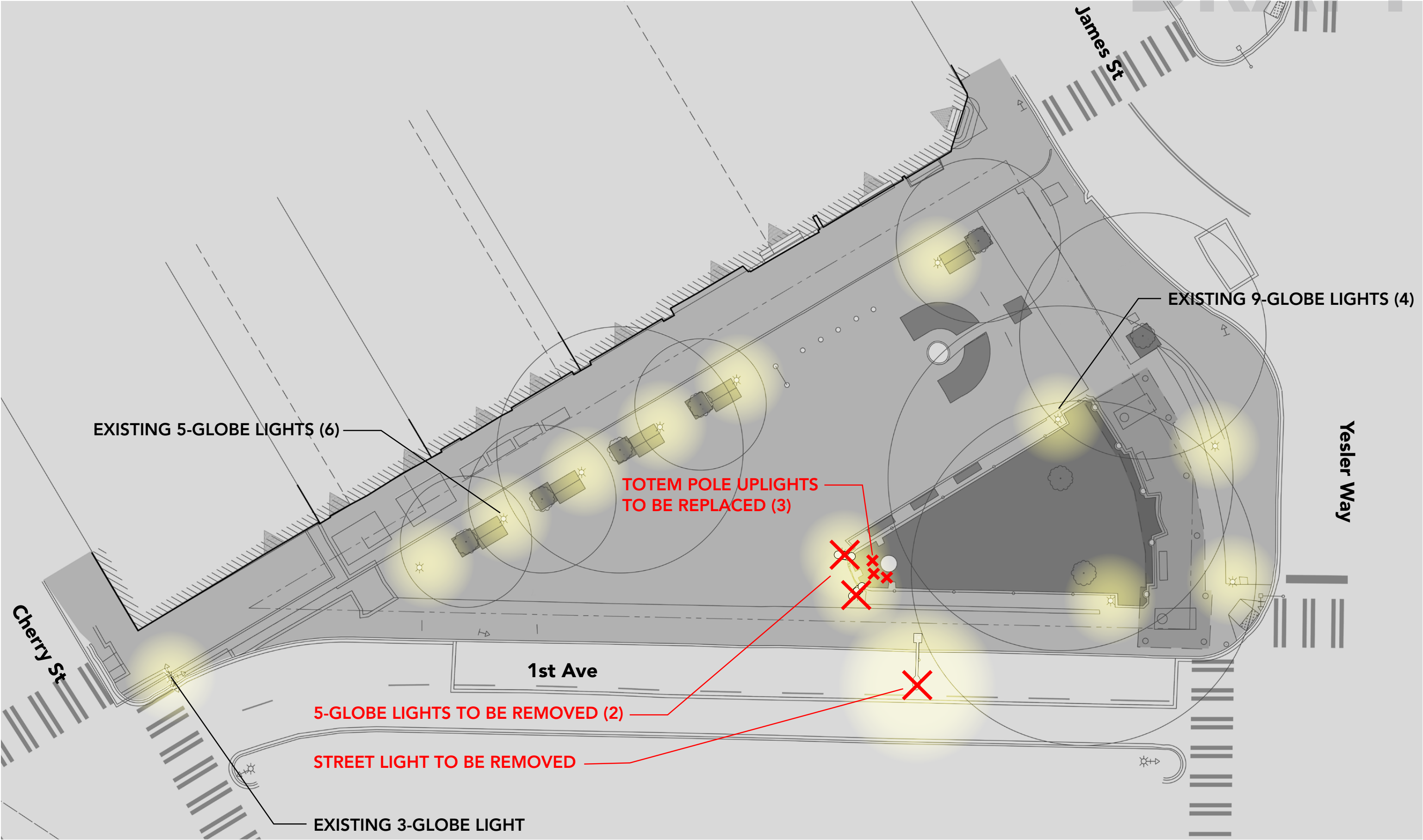
HISTORIC REGISTER STATUS: Pergola and associated features (9-globe lights) are listed in the NRHP (National Register of Historic Places). 3-Globe and 5-globe lights are NRHP-contributing characteristic but not listed in the NRHP.

PROPOSAL: Retain all 9-globe lights and 5-globe lights in place, except for (2) 5-globe lights at totem pole



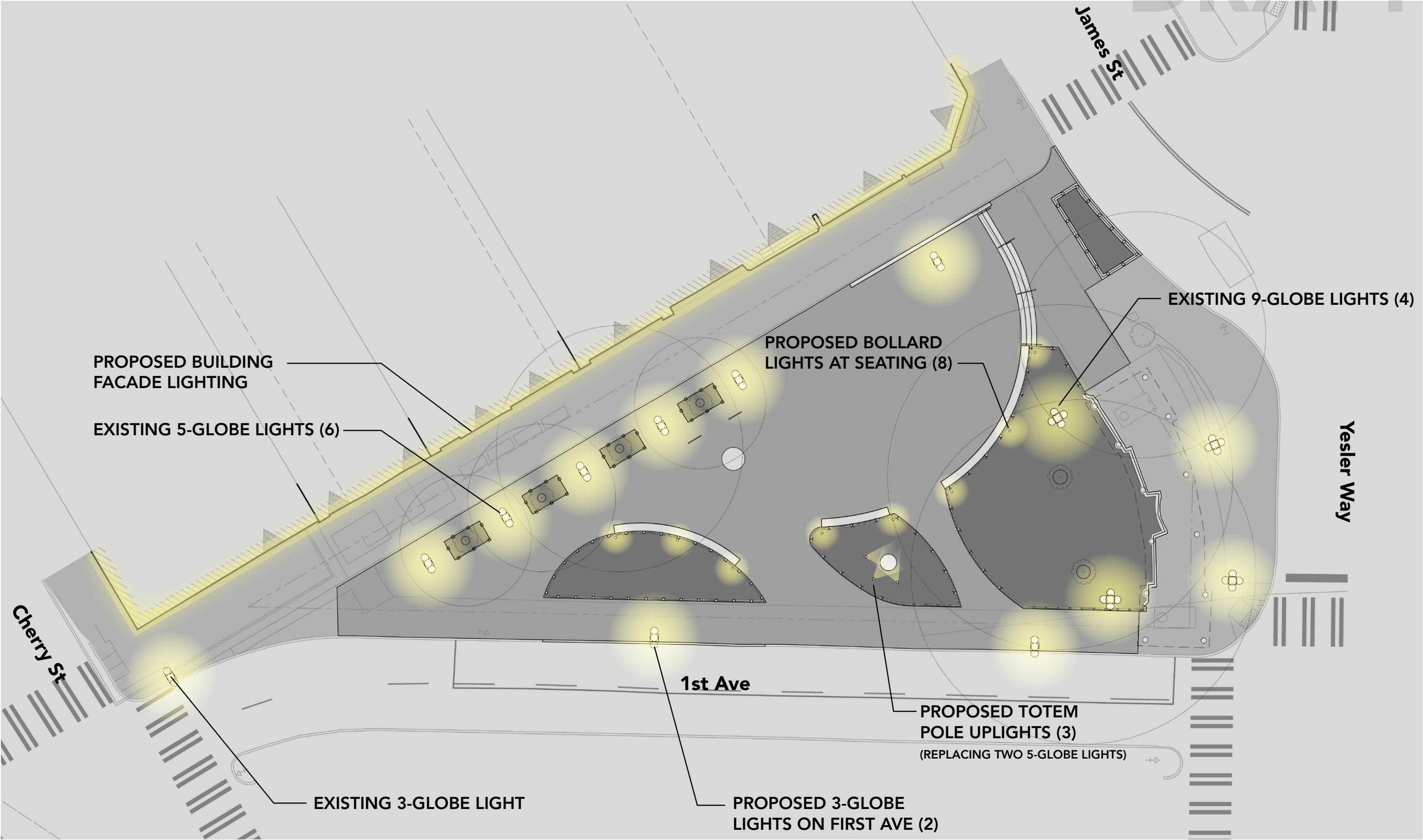
LIGHTING REMOVAL PLAN

DRAFT



PROPOSED LIGHTING

DRAFT



PRECEDENT IMAGES FOR NEW LIGHTING

DRAFT



Bollard Lighting



Historic Facade Lighting

FOUNTAIN + ART

DRAFT

1909: Chief Seattle fountain installed at the north apex of the triangle planter in front of the totem pole facing north

1984: Chief Seattle fountain relocated to its present location

1989: “Day and Night” art panels installed as temporary public artwork next to Chief Seattle fountain

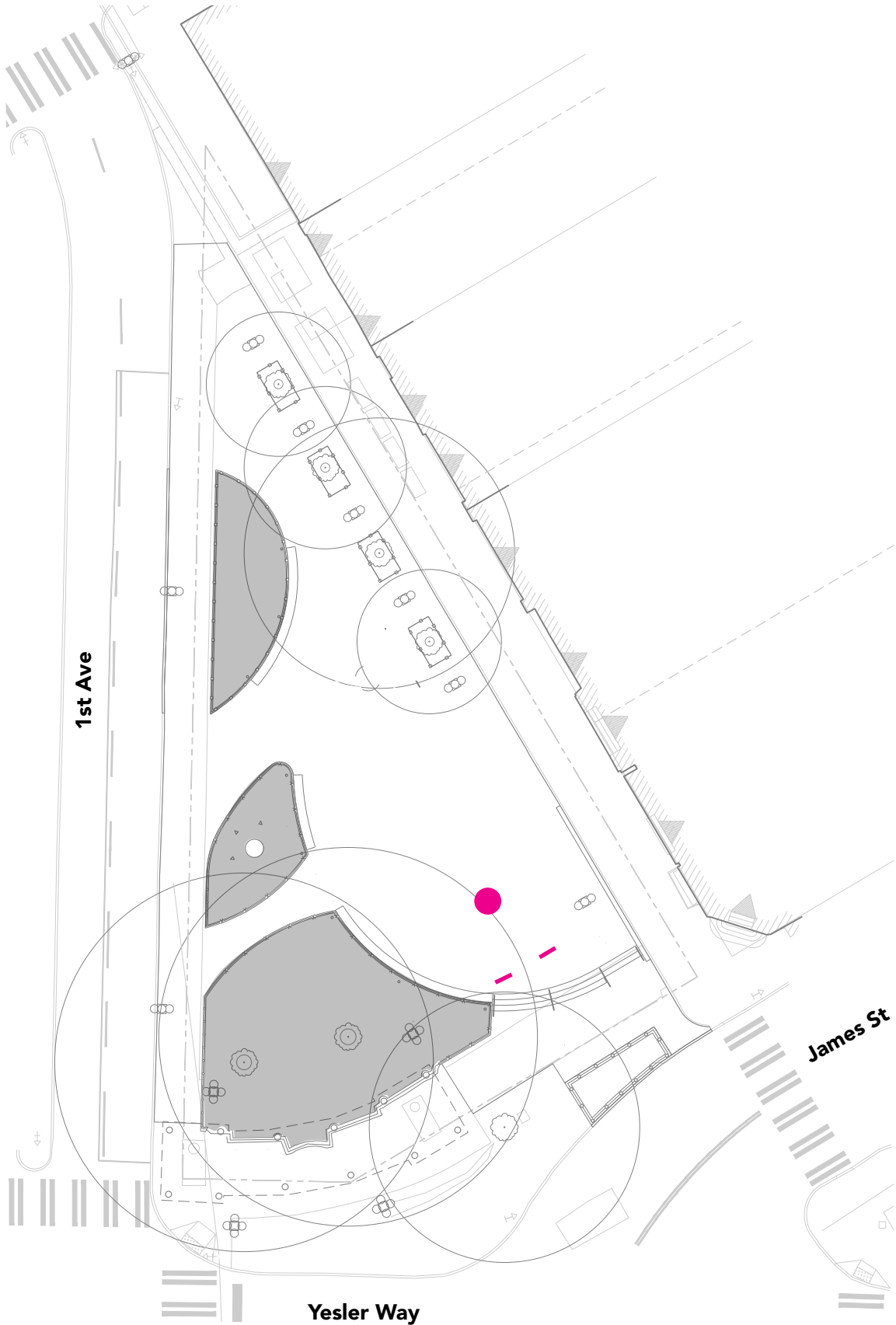
HISTORIC REGISTER STATUS: Chief Seattle fountain listed in the NRHP (National Register of Historic Places). “Day and Night” sculpture determined NRHP non-contributing.

PROPOSAL: Relocate fountain and panels

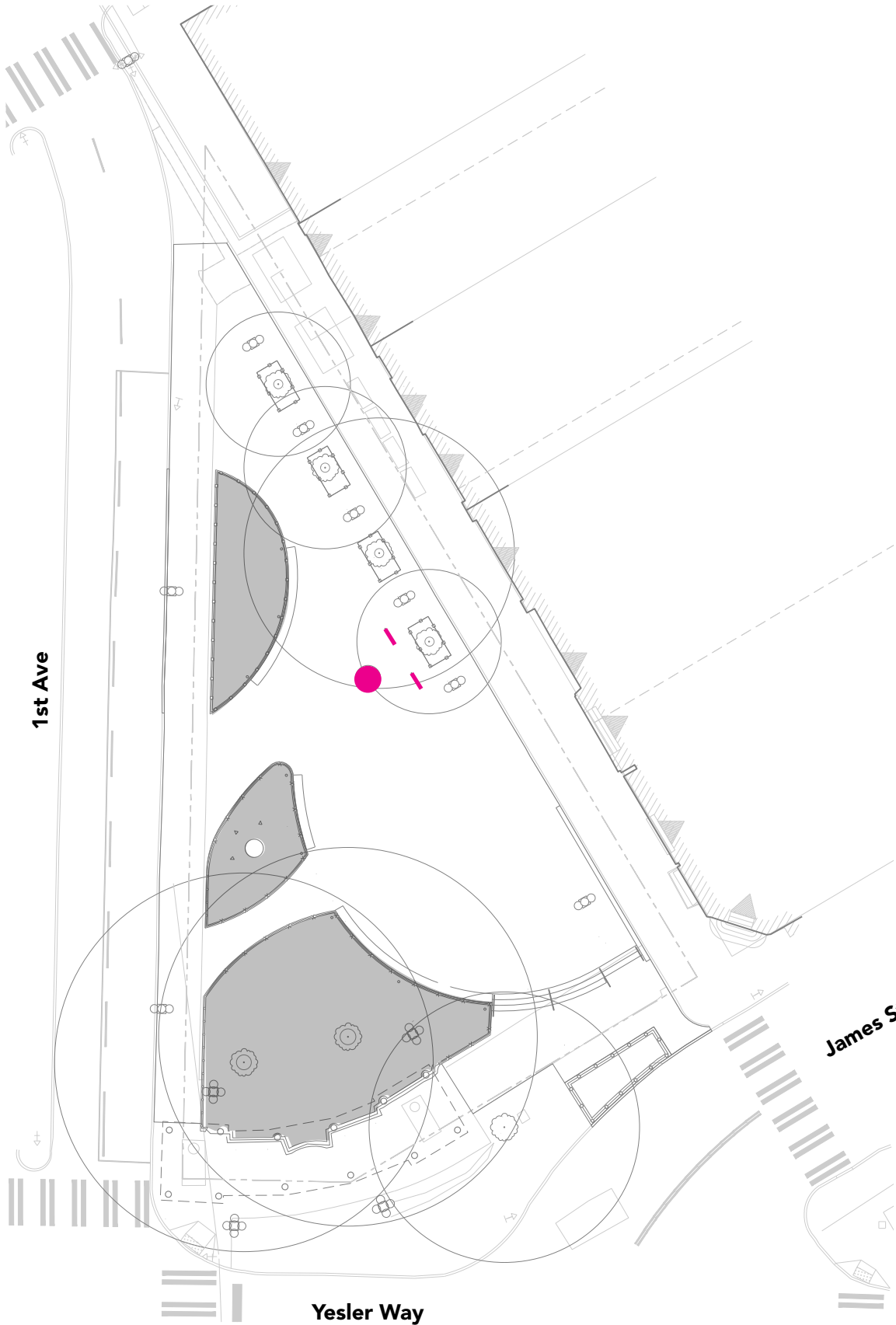


FOUNTAIN + ART RELOCATION

DRAFT



Existing Location



Proposed Location



Existing Location – From James St Looking NW



Existing Location – From Inside the Park Looking SE



1893 – 1923: Cobblestone vehicular street + triangle lawn and square

1923 – 1973: Repaved concrete vehicular street + triangular concrete public square

1973 – 2004: Street paved over + replaced by sandstone cobblestones throughout plaza

2004 – PRESENT: Majority of cobblestones replaced with concrete unit pavers

HISTORIC REGISTER STATUS:

Cobblestones are a NRHP (National Register of Historic Places)-contributing characteristic but not listed in the NRHP. Concrete unit pavers are not listed.

PROPOSAL: Replace concrete unit pavers with stone pavers; incorporate existing cobblestone pavers into design.





Pioneer Square Alleys – unit pavers

Paving Requirements

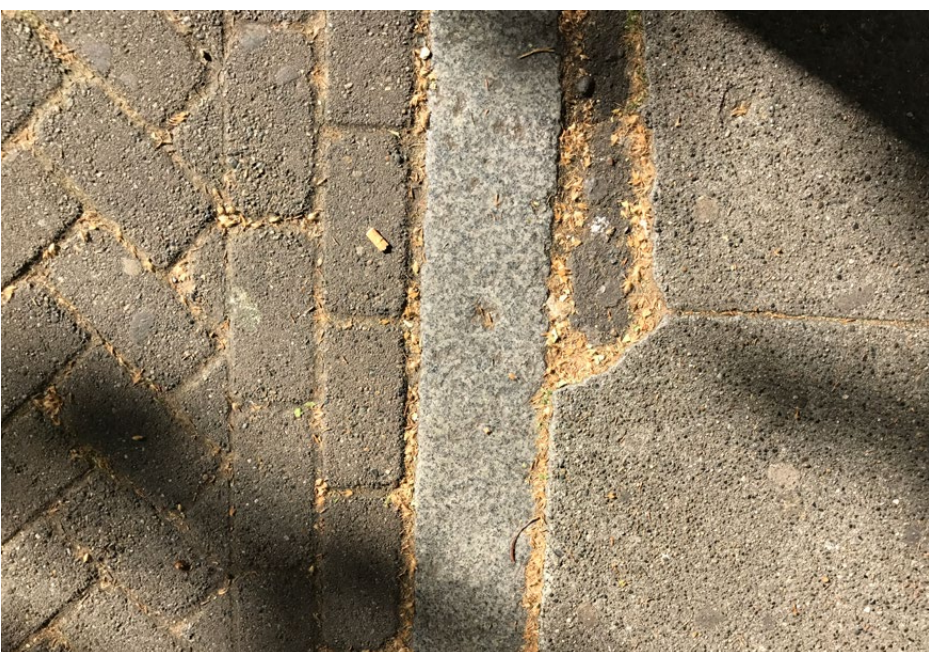
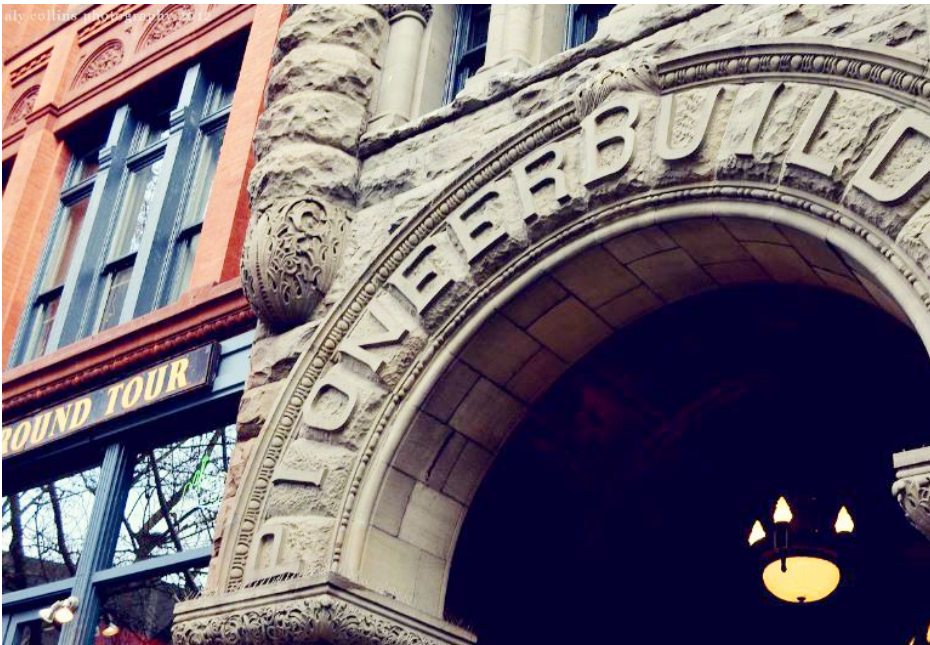
- No District Standard for plaza paving
- Alleyways to be paved with remolded paving bricks, cobbles or interlocking brick-toned pavers



Occidental Square – brick in varying colors + sizes, stone inlay, and concrete

EXISTING MATERIALS

DRAFT



PROPOSED PAVING MATERIAL



Red/Pink Granite (Preferred)



Granite Curb Reinstalled



Cobblestone Pavers Reinstalled

PAVING PATTERN EXAMPLE

DRAFT

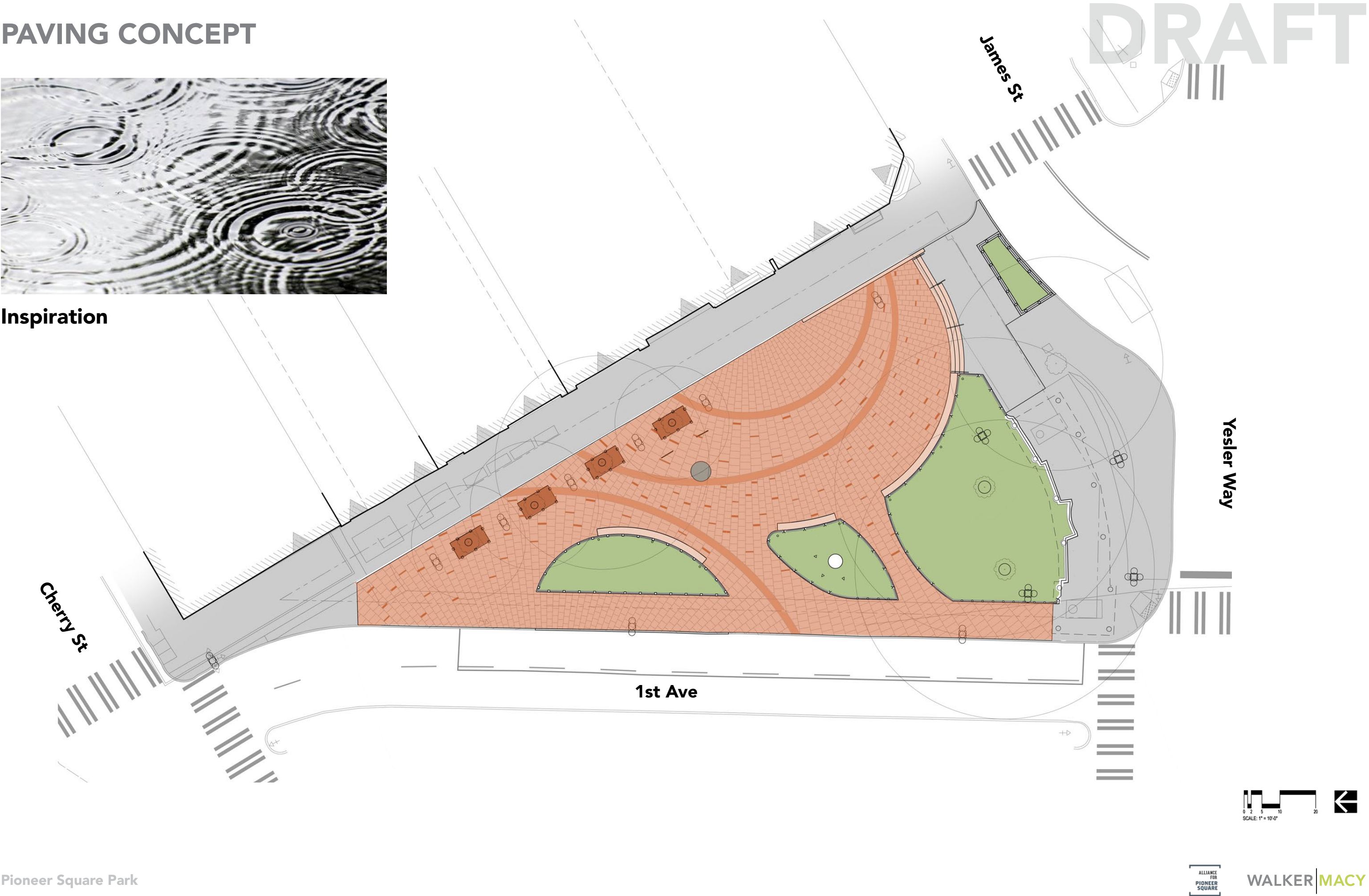


Radial

PAVING CONCEPT



Inspiration



HISTORIC PAVING PATTERN PRECEDENT

DRAFT



Maple Leaf Square, Vancouver, BC (Paving Installed 1972)

BENCHES

DRAFT

1909 – 1910: Standard single-sided benches at triangle planter and pergola

1923: Standard single-sided benches removed from triangle planter, pergola benches remain

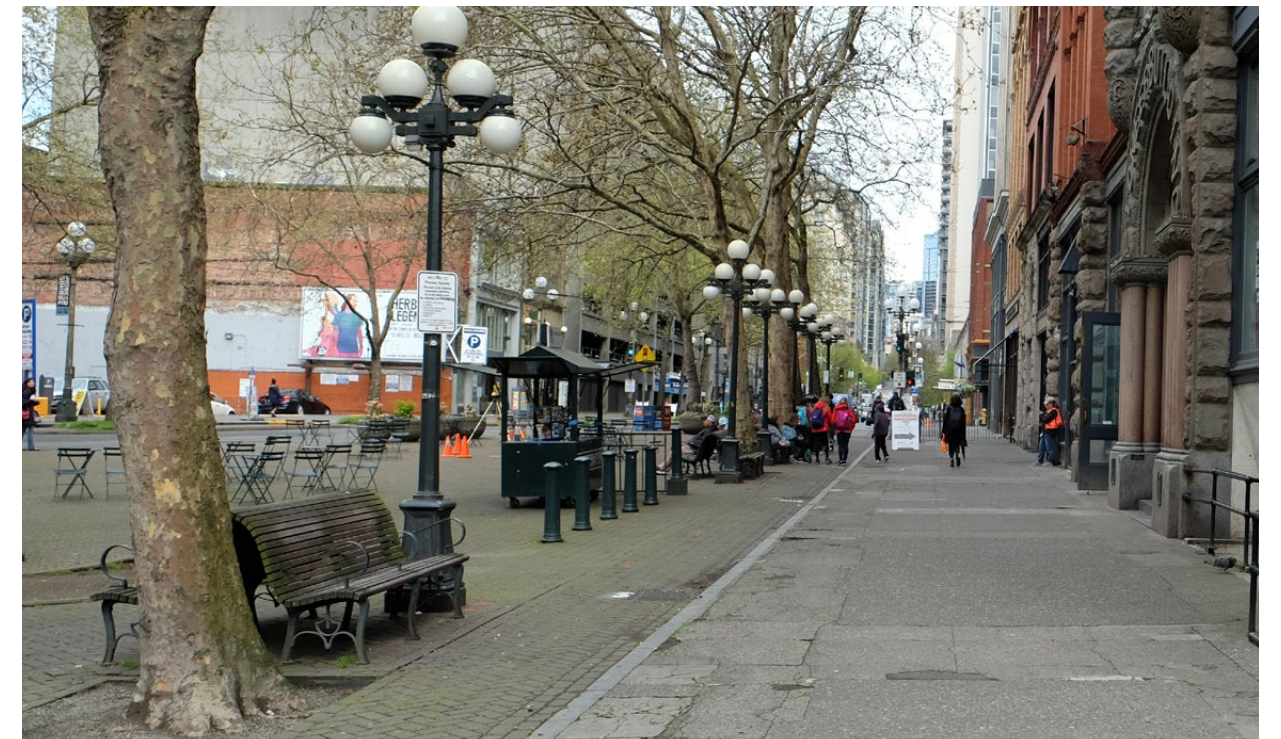
1973: Five double-sided benches, four single-sided benches, + two extra-long single-sided benches added

2004: One single-sided bench under pergola removed + majority of both extra-long benches cut into three remaining benches

PRESENT: Five double-sided benches in front of the buildings remain from the 1973 redesign. Standard length benches from 2004 remain at planter.

HISTORIC REGISTER STATUS: NRHP-contributing characteristic but not listed in the NRHP. The cast iron and wood benches in Pioneer Square Park and City Hall Park are standard for the Pioneer Square District.

PROPOSAL: Remove standard size benches and add extra long bench along planter



SEATING DISTRICT PRECEDENTS

DRAFT



Pioneer Square Park



City Hall Park



Occidental Square



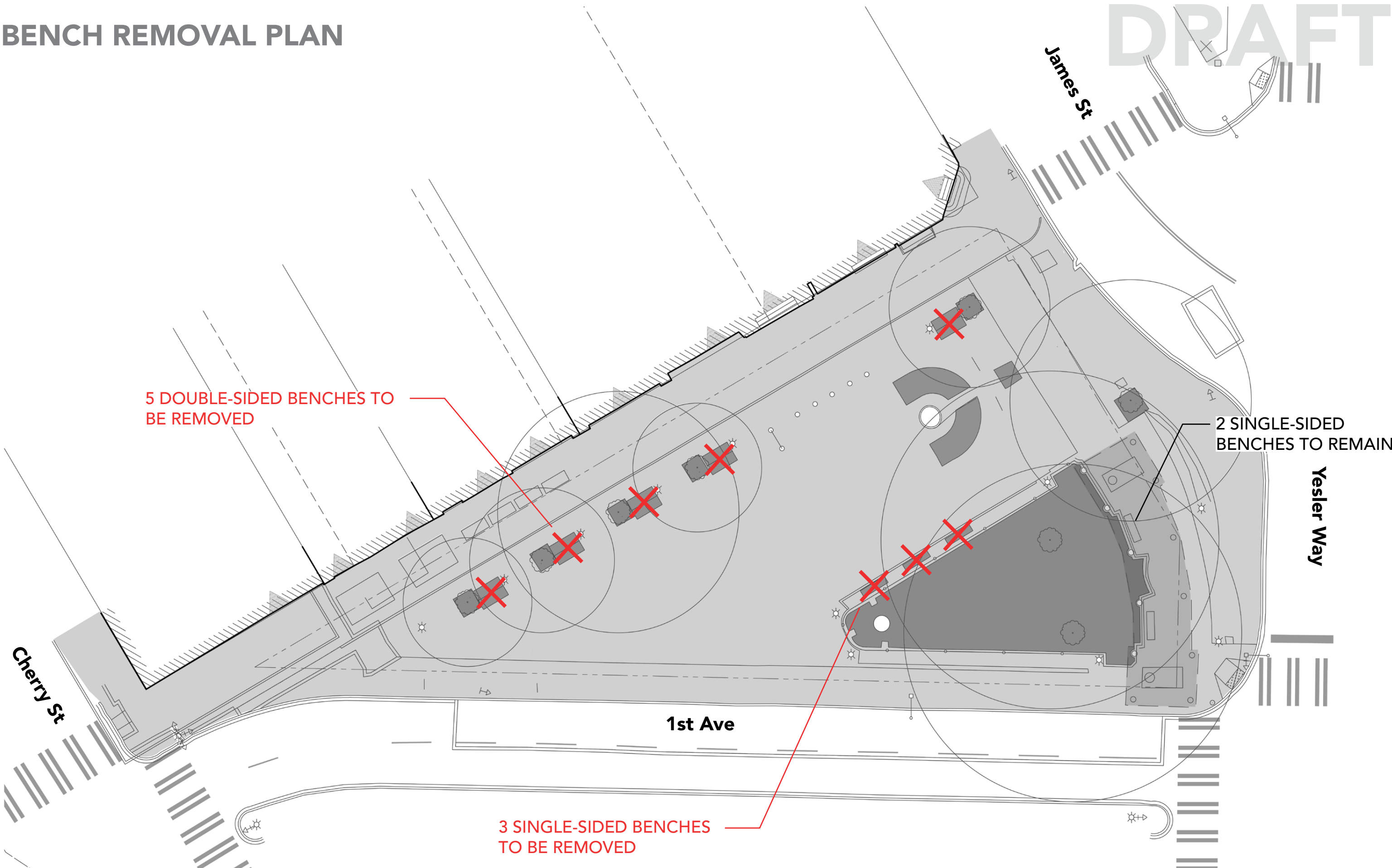
Occidental Square



Union Station Square

BENCH REMOVAL PLAN

DRAFT



SEATING & FURNISHINGS

DRAFT

LEGEND

- Fixed Seating
- Moveable Seating
- SPR Kiosk



SEATING OPTION 1

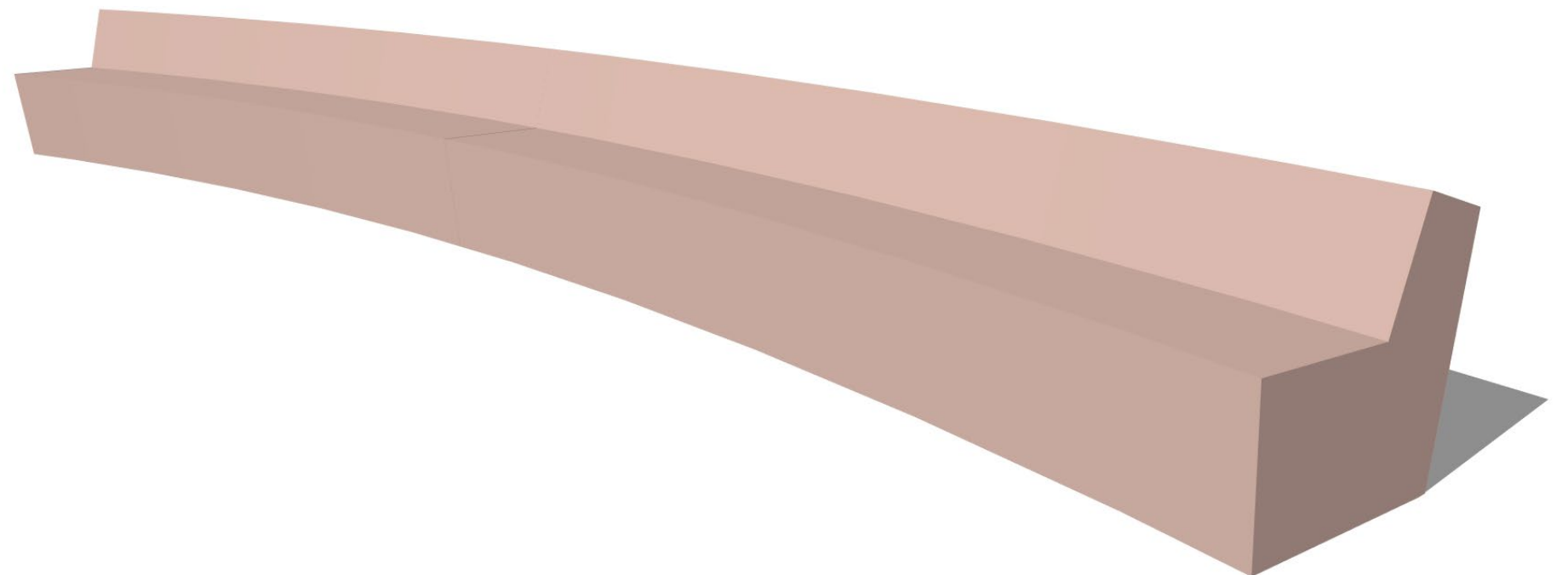
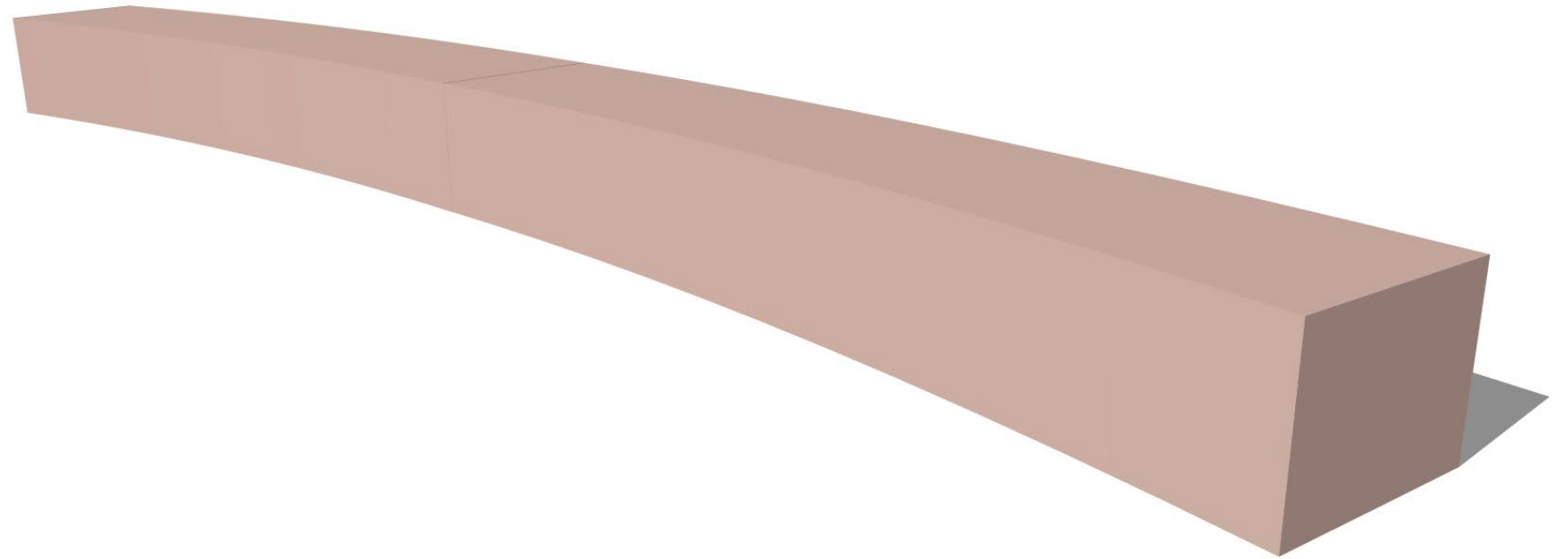


Solid Stone Bench

Potential Additions

- Armrests
- Skate stops

DRAFT



SEATING OPTION 2

DRAFT



Metal Bench

Potential Additions

- Armrests
- Skate stops

