

Prefontaine Fountain

Schematic Design Options for Rehabilitation

Prepared For:



Seattle
Parks & Recreation

By:



PARTNERSHIP
berger

PREFONTAINE FOUNTAIN & SURROUNDING OPEN SPACE REHABILITATION

PROJECT GOALS

Prefontaine Fountain's existing condition is overcome with a variety of issues, creating a space that no longer facilitates itself as a public resource but as a public burden. The goals below outline the variables the project team is working to resolve, guiding design strategies that honor the past while implementing solutions to present day problems.

ADDRESS AGING INFRASTRUCTURE ISSUES

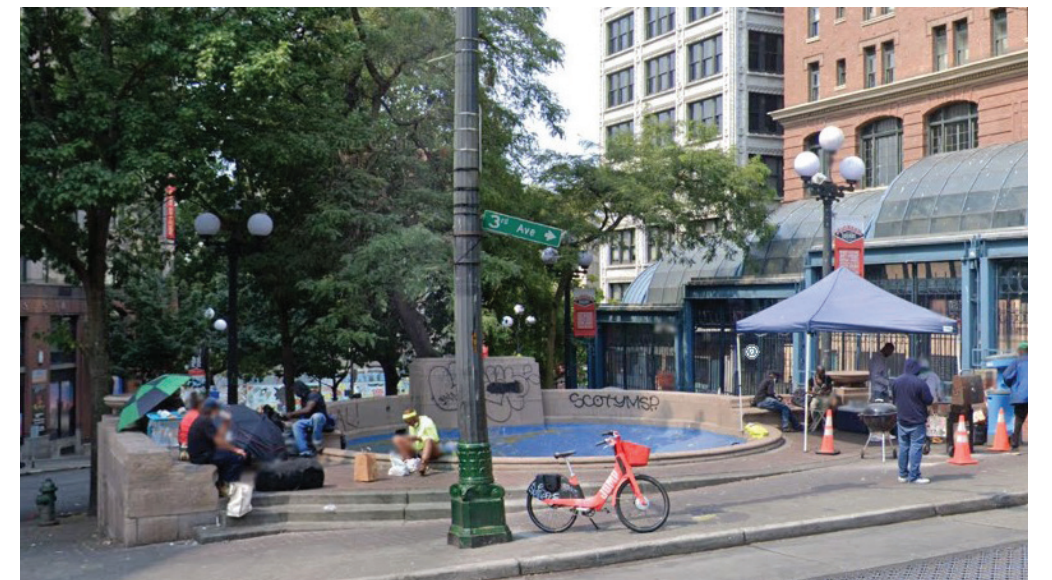
1. New electrical and plumbing services.

ADDRESS PUBLIC HEALTH & SAFETY ISSUES

2. Wall heights in combination with street slopes create hiding spots and lack of visibility.
3. Fountain bowl feature encourages garbage accumulation.
4. Fountain in its current position is most susceptible for vandalism and vagrancy.

CREATE A USER-FOCUSED PUBLIC OPEN SPACE

5. Existing structure blocks access through the site, causing users to avoid the area.
6. Re-establish community investment in the space.
7. Turtles are broken and are not suitable vandal-resistant elements.
8. Opportunity for new commemorative plaque.
9. Three trees internal to the Prefontaine Place property are in poor health condition and must be removed. Opportunity for one new tree(TBD). Street trees to remain.

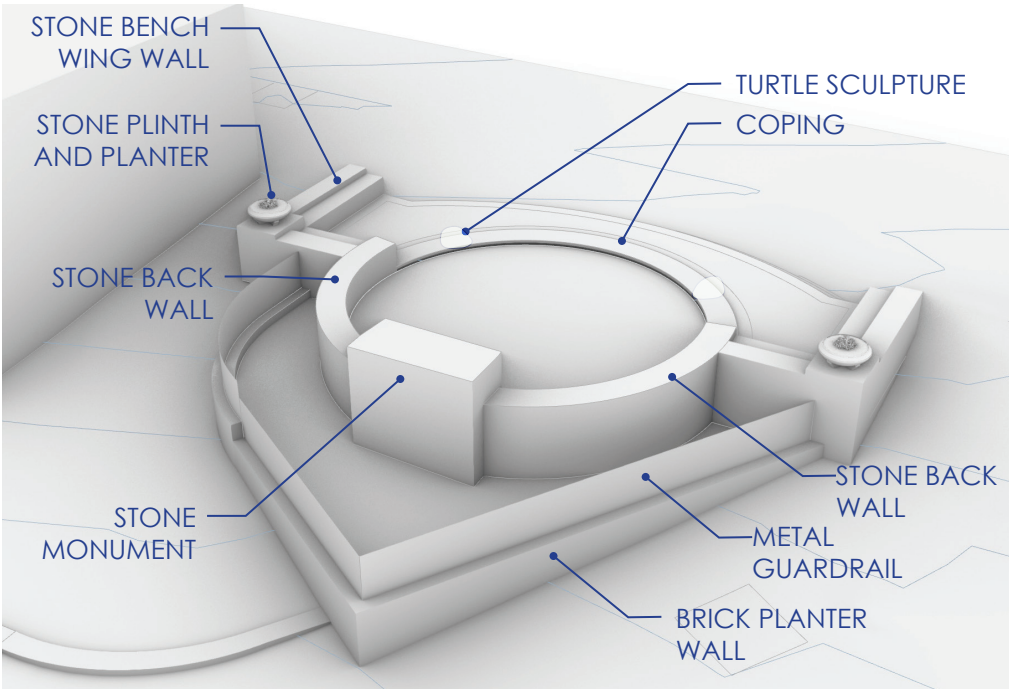


PREFONTAINE FOUNTAIN & SURROUNDING OPEN SPACE REHABILITATION

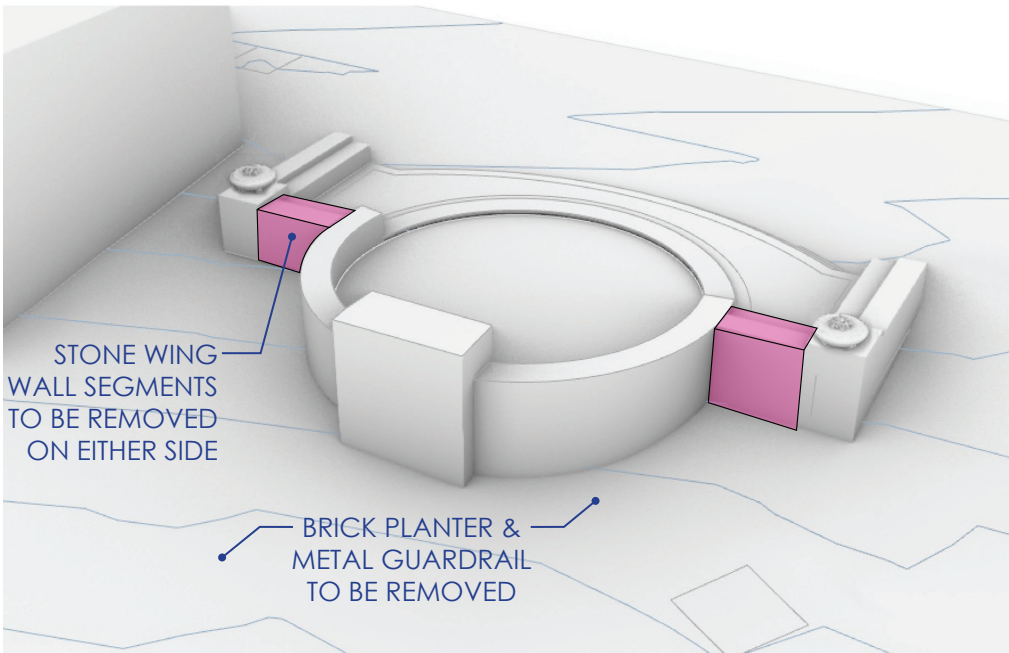
WALLS & STRUCTURE - EXPLORING SITE CIRCULATION

Studies on this page compare existing architectural features that make up Prefontaine Fountain, identifying a strategic removal of two short wall segments to increase mobility in and around the fountain.

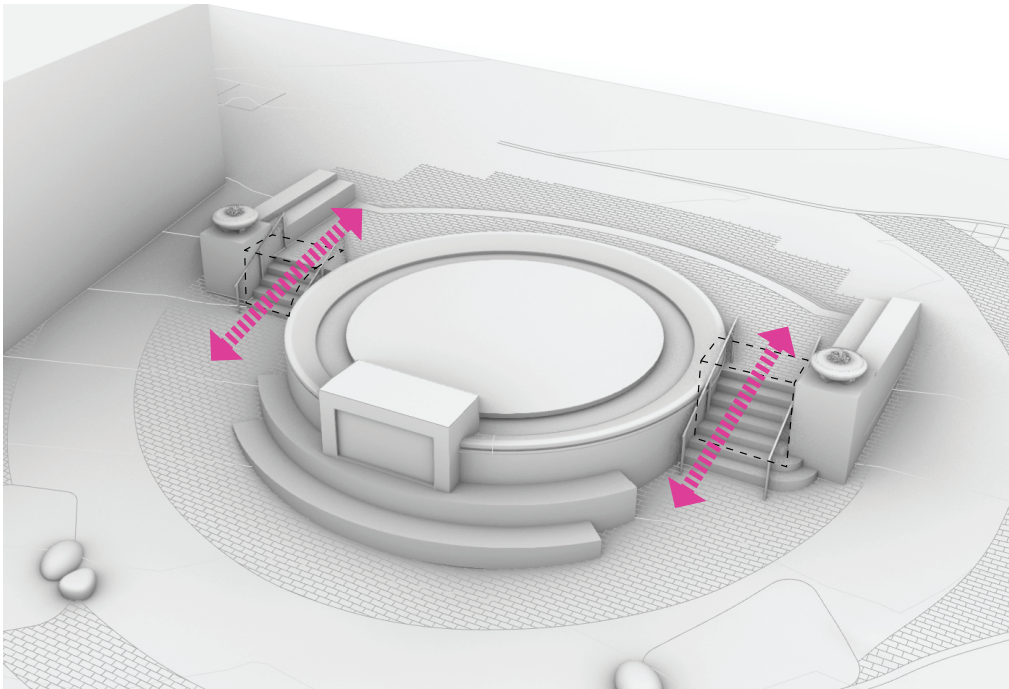
These modifications respond to high priority recommendations identified by SDOT in the 2019 Public Life Action Plan to improve safety, mobility and circulation around the Sound Transit head house. By removing the wall segments and installing stairs two additional pathways are created, effectively doubling the amount of space to move through the area.



EXISTING CONDITIONS



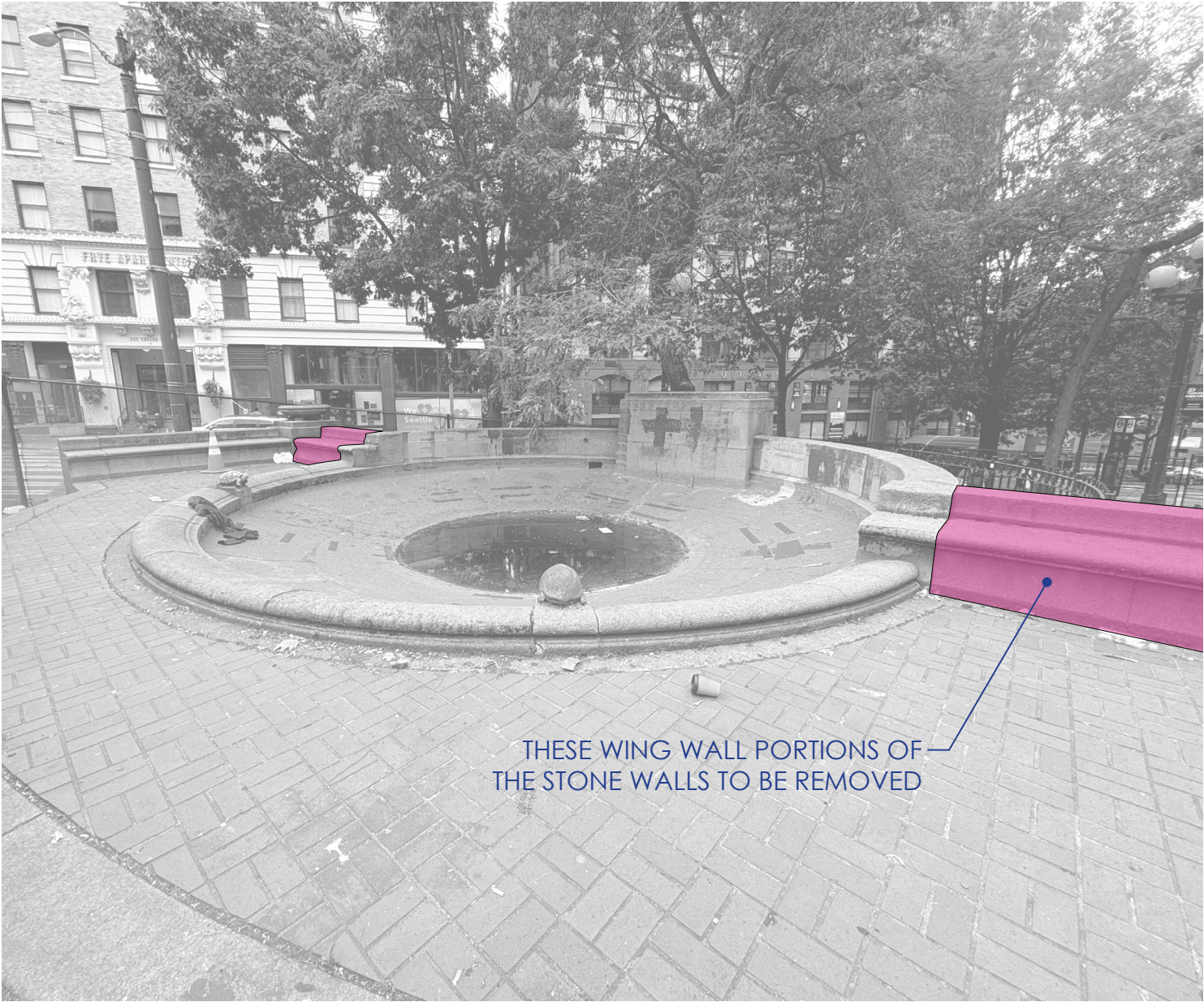
EXISTING FOUNTAIN WALL PORTIONS IDENTIFIED FOR REMOVAL



PROPOSED CONCEPT: STAIR ACCESS THROUGH THE FOUNTAIN AREA

PREFONTAINE FOUNTAIN & SURROUNDING OPEN SPACE REHABILITATION

WALLS & STRUCTURE - EXPLORING SITE CIRCULATION



EXISTING WALL PORTIONS IDENTIFIED FOR REMOVAL



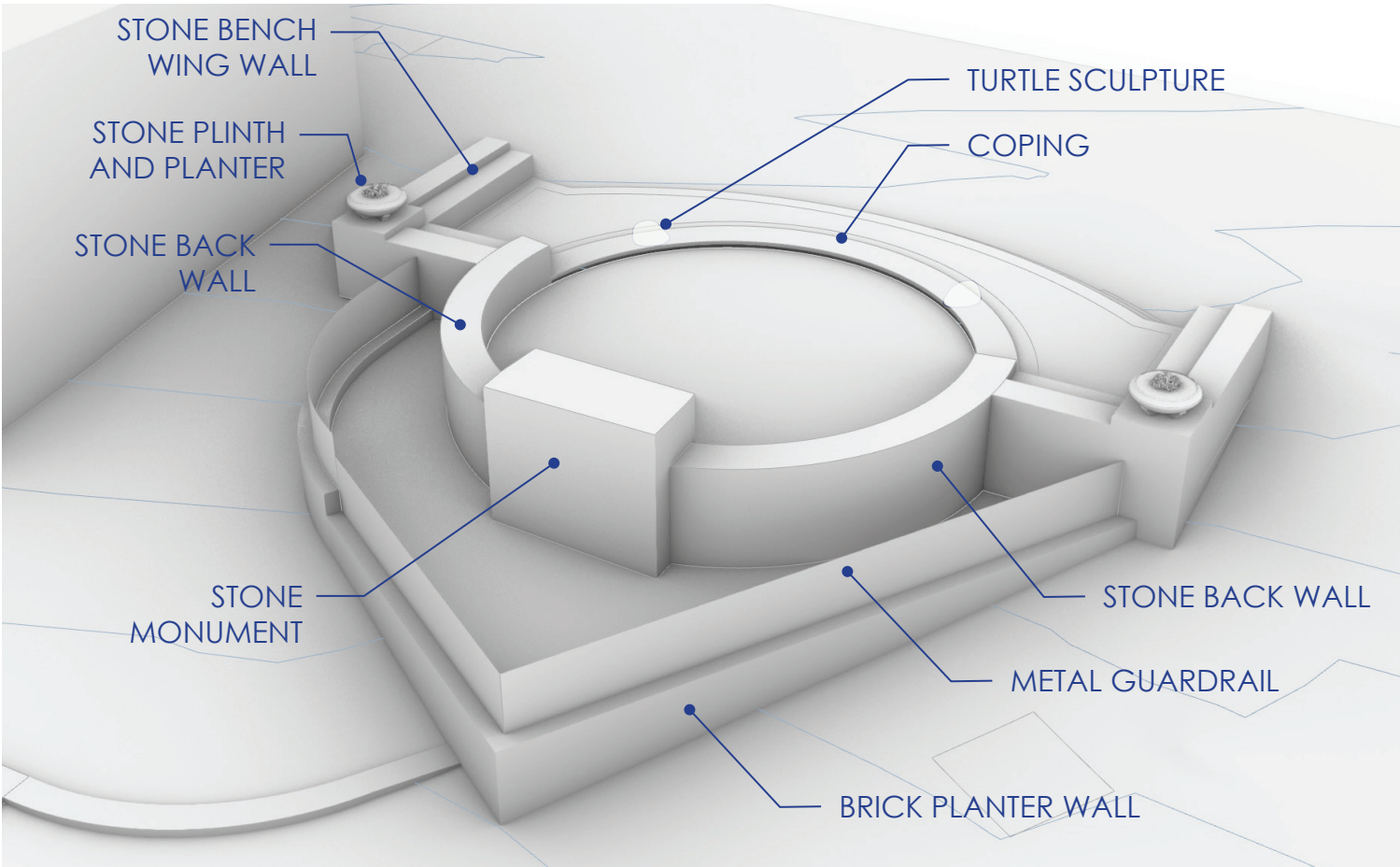
PROPOSED ACCESS THROUGH THE FOUNTAIN AREA

PREFONTAINE FOUNTAIN & SURROUNDING OPEN SPACE REHABILITATION

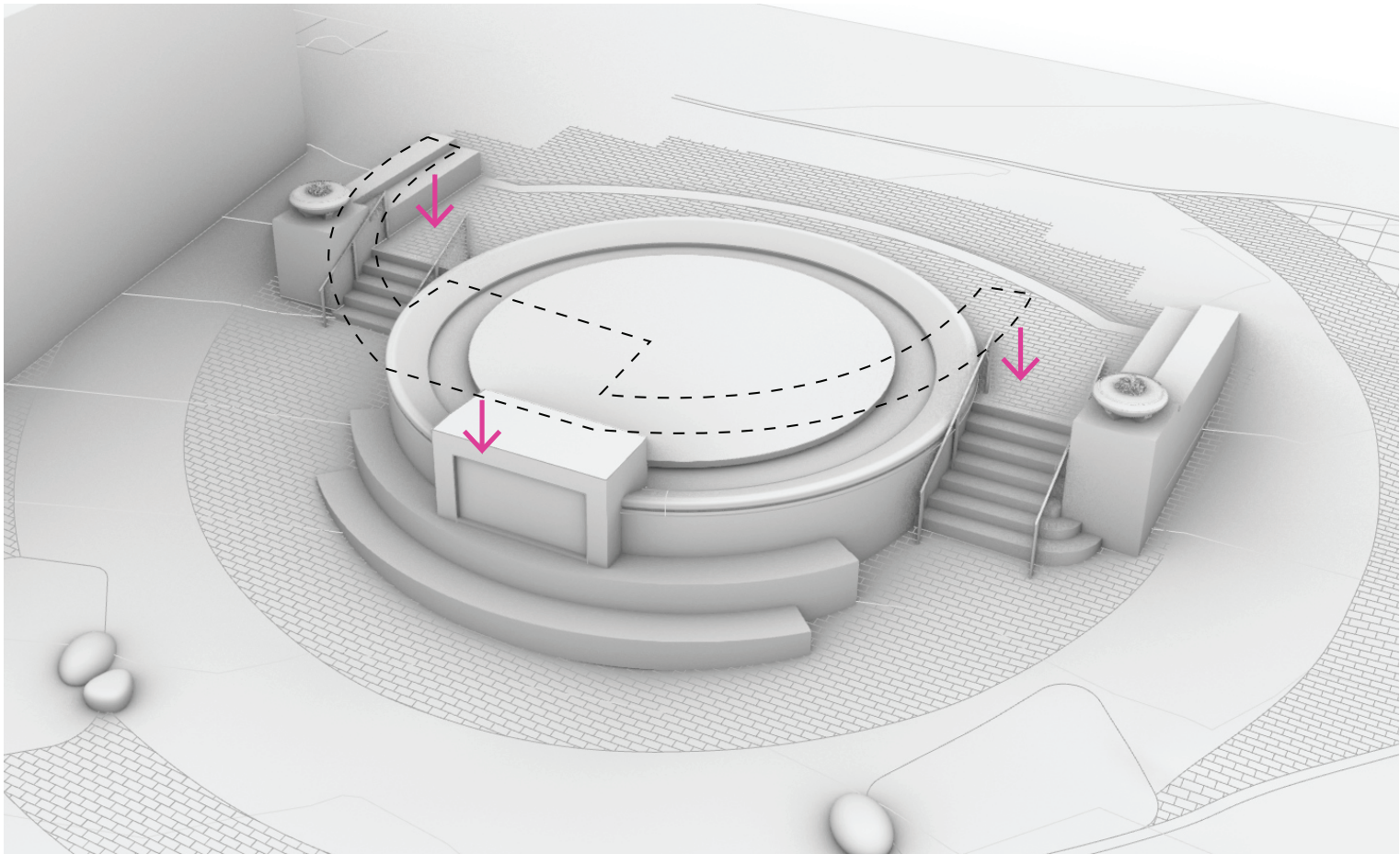
WALLS & STRUCTURE - EXPLORING SITE VISIBILITY

In order to improve sight lines through the area to remove blind spots where people hide, we are also exploring reducing the height of the main monument and shoulder walls as depicted below.

The diagram to the right proposes to reduce the main monument and wall heights to align with the existing coping elevation around the pool. This creates transparency and awareness of surroundings while you are passing through the area.



EXISTING CONDITIONS

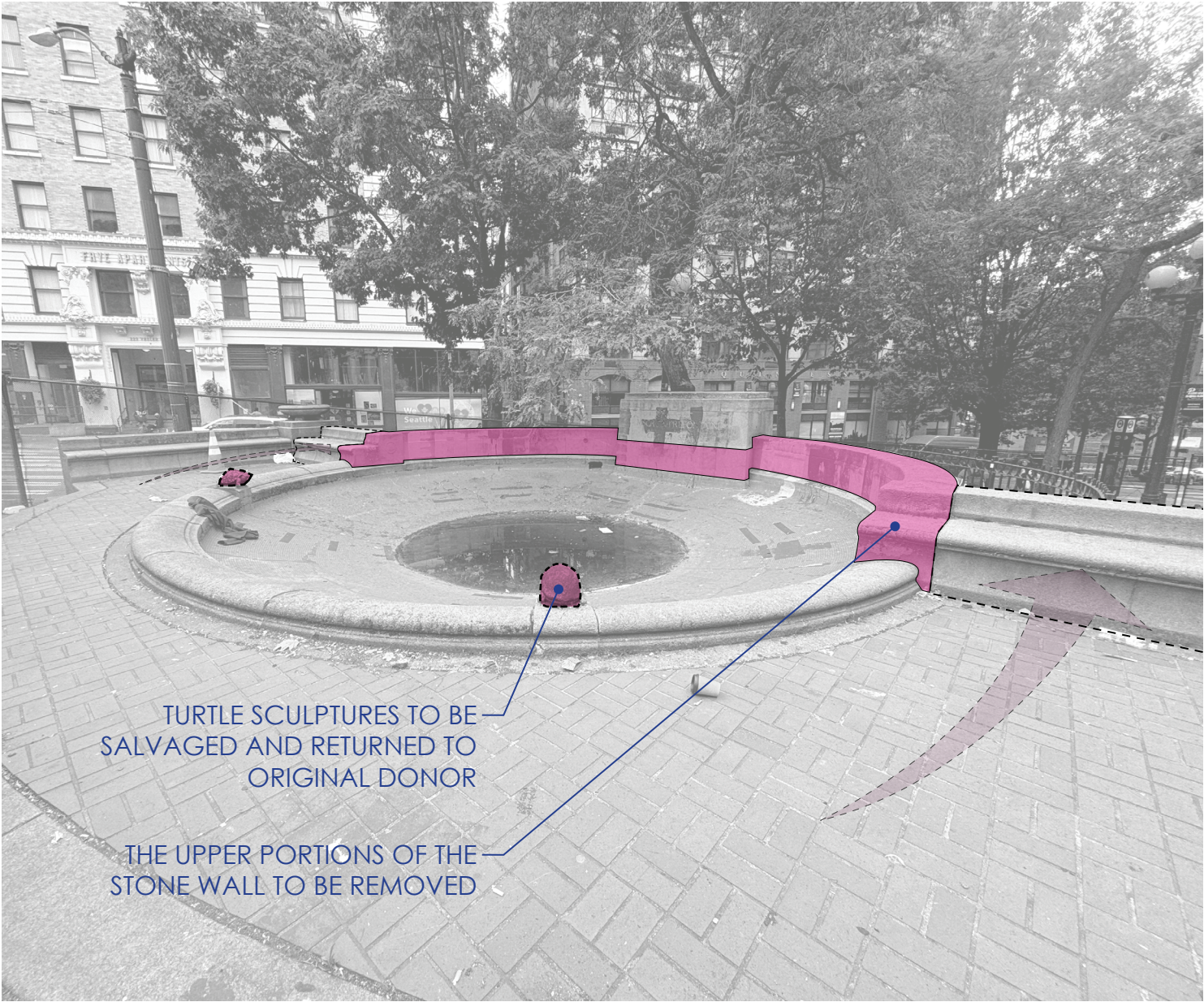


PROPOSED CONCEPT - HALF FOUNTAIN DEPRESSION

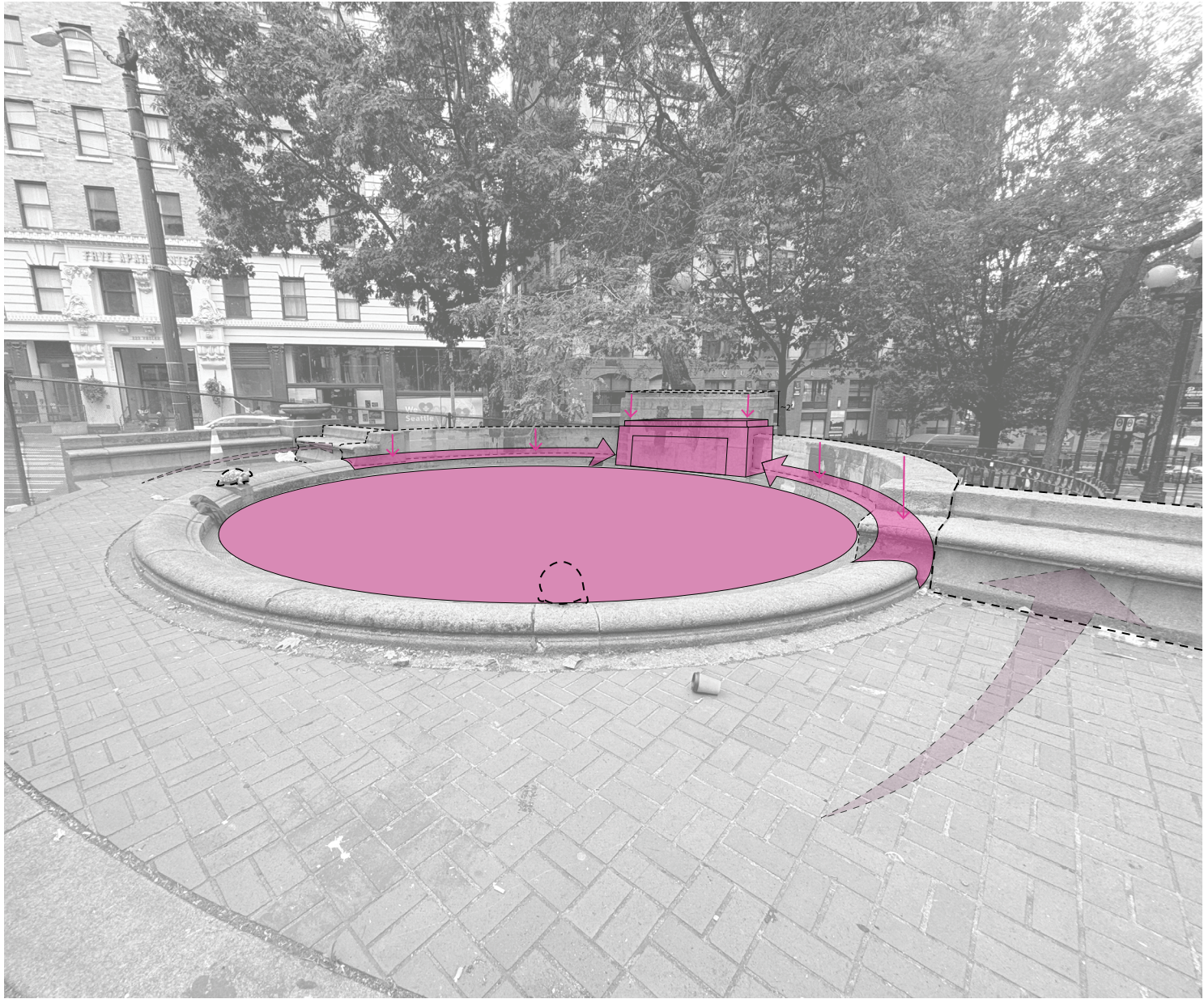
Back portion of fountain moves down to align with coping (about 2') engraved monument stone to be relocated and incorporated into lowered final monument. Future engraving or commemorative plaque to be incorporated onto the backside of the lowered stone monument facing out towards the lower plaza space. Turtle sculptures to be salvaged and returned to the original donor.

PREFONTAINE FOUNTAIN & SURROUNDING OPEN SPACE REHABILITATION

WALLS & STRUCTURE - EXPLORING SITE VISIBILITY



EXISTING WALL PORTIONS IDENTIFIED FOR REMOVAL



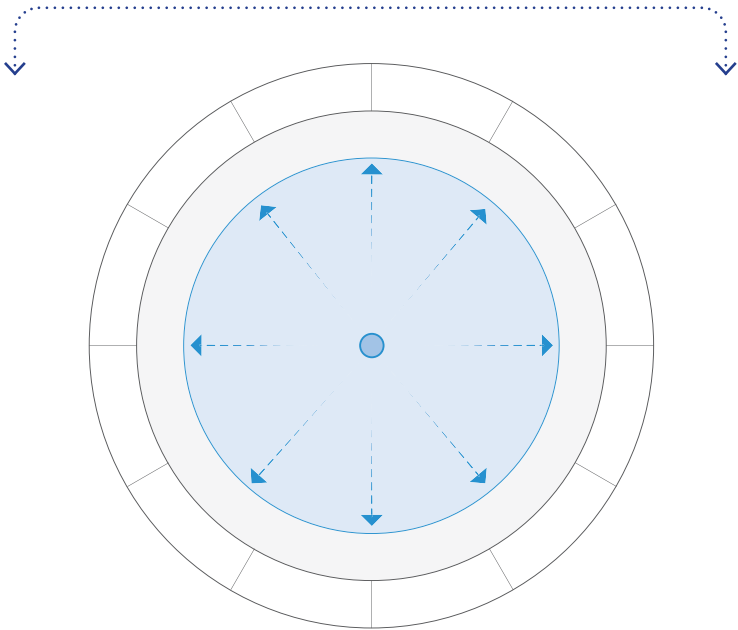
PROPOSED CONCEPT - HALF FOUNTAIN DEPRESSION

PREFONTAINE FOUNTAIN & SURROUNDING OPEN SPACE REHABILITATION

WATER EXPERIENCE CONCEPTS

FLOW-OVER WATER

DRAINS TO STORM SYSTEM



INVERTED DOME

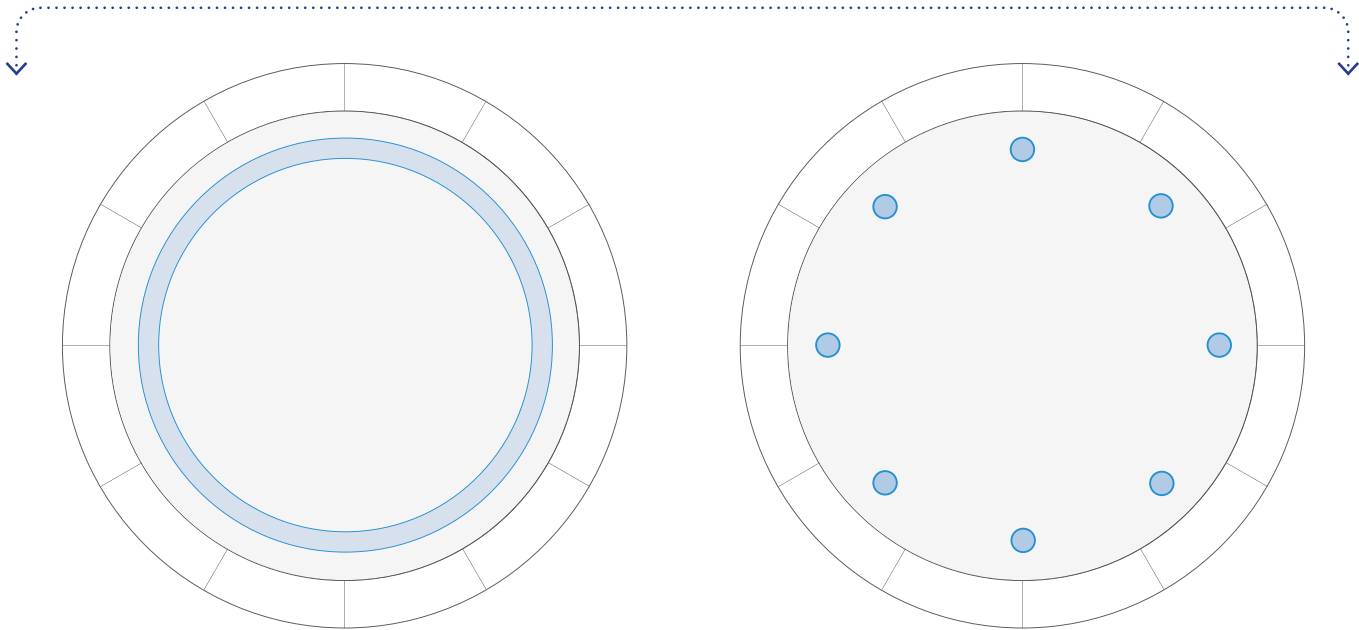
Shallow depth with gutter



TRICKLING FLOW-OVER EXAMPLE

MISTING WATER

DRAINS TO STORM SYSTEM



INVERTED DOME

Shallow depth with inset misters

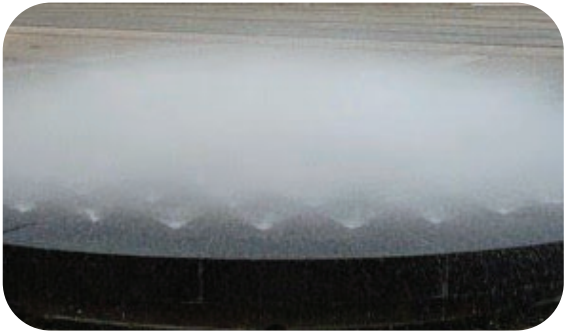


SHALLOW BOWL

Shallow depth with inset misters



LINEAR MISTER EXAMPLE



JET MISTER EXAMPLE

POSSIBLE

ACTIVATIONS

TEXTURE

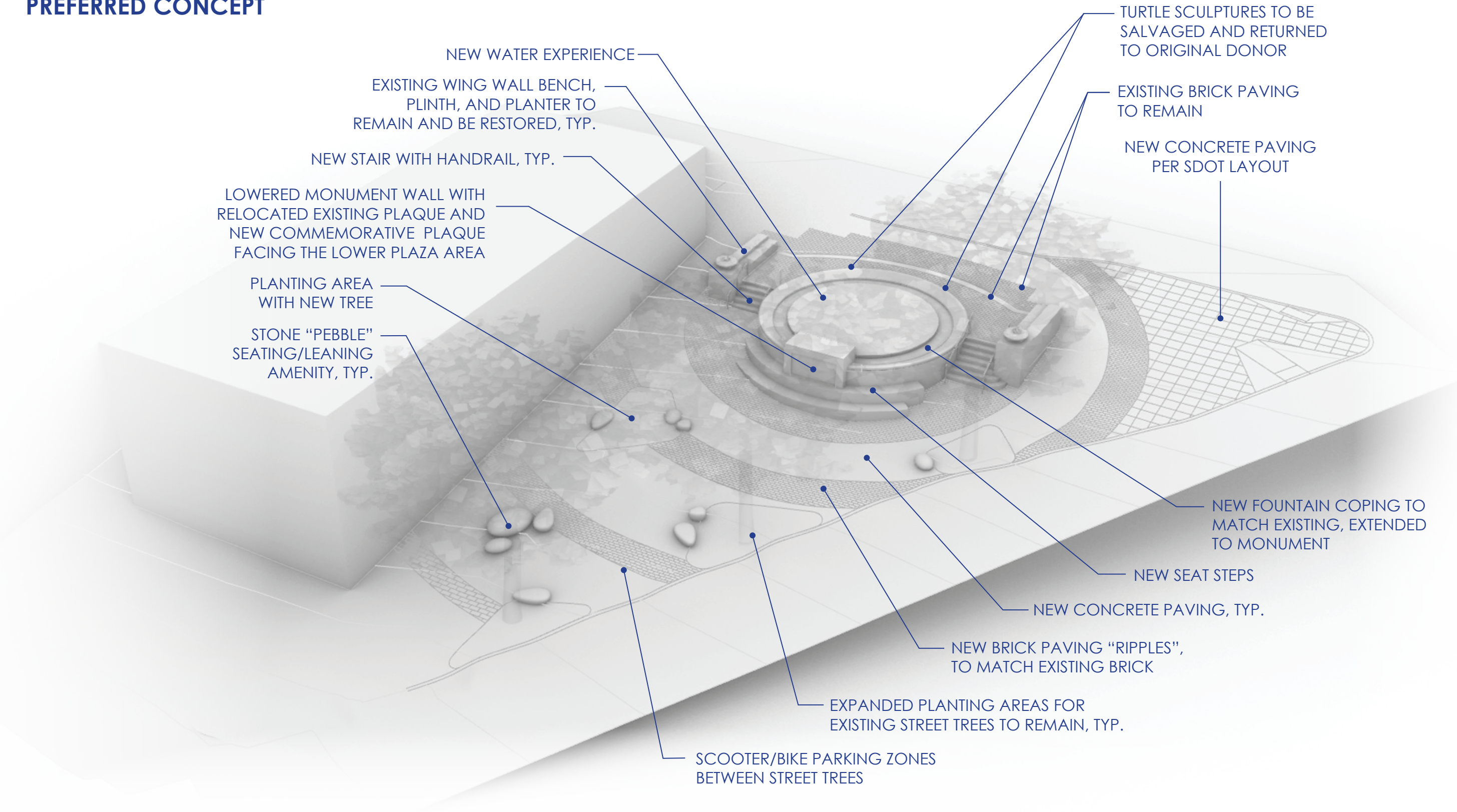
SCULPTED TEXTURE / ARTIST
COLLABORATION
TEXTURED OR STACKED TILES

ACCENTS

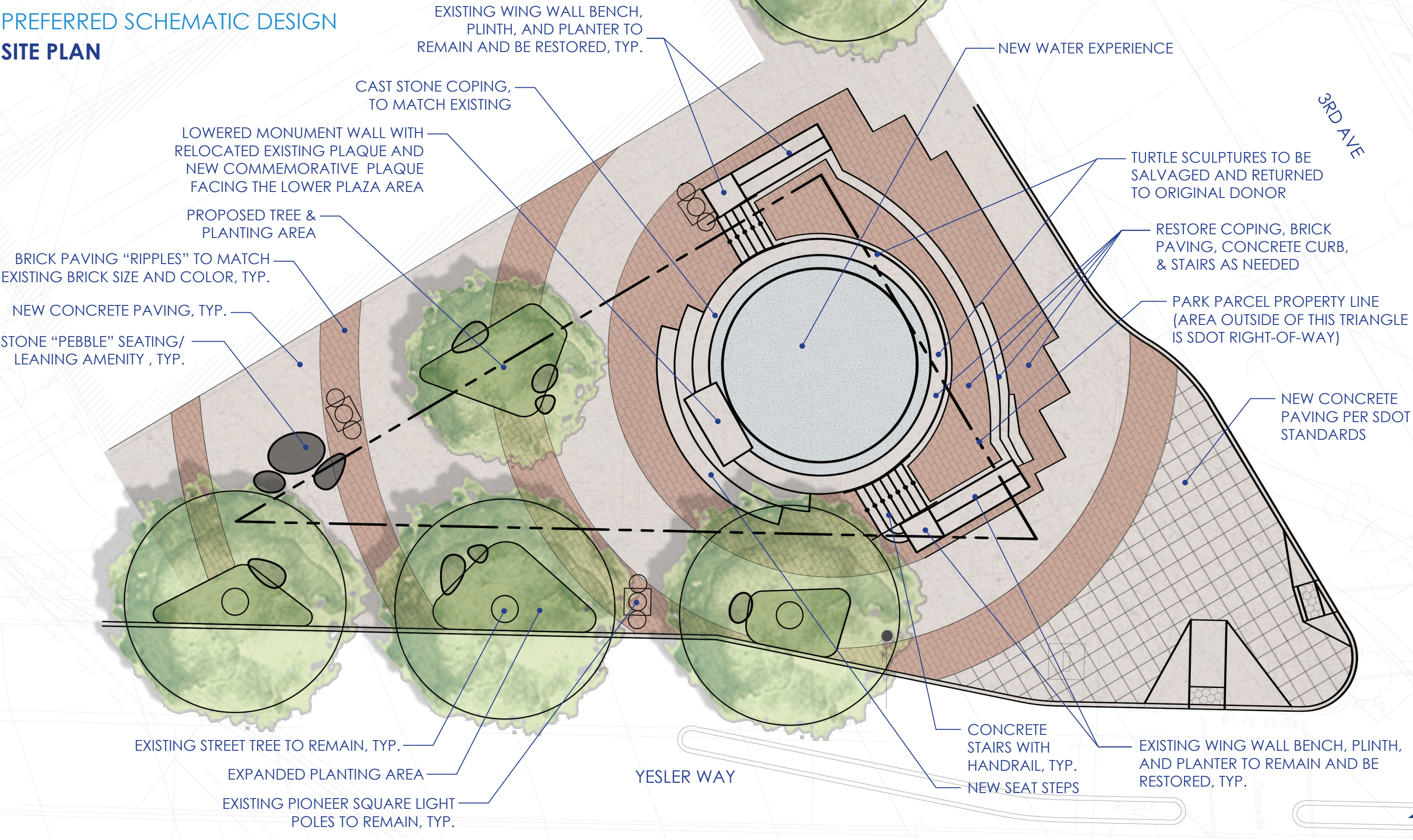
ABSTRACT TURTLES
(Example: Tile Mosaic)

PREFONTAINE FOUNTAIN & SURROUNDING OPEN SPACE REHABILITATION

PREFERRED CONCEPT

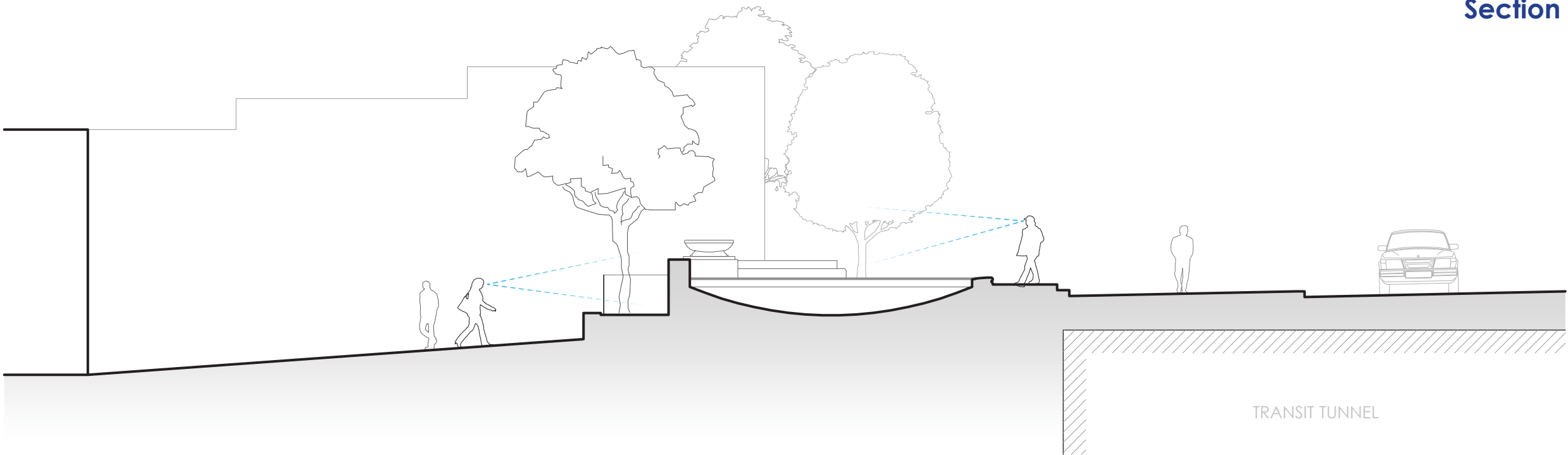


PREFERRED SCHEMATIC DESIGN
SITE PLAN

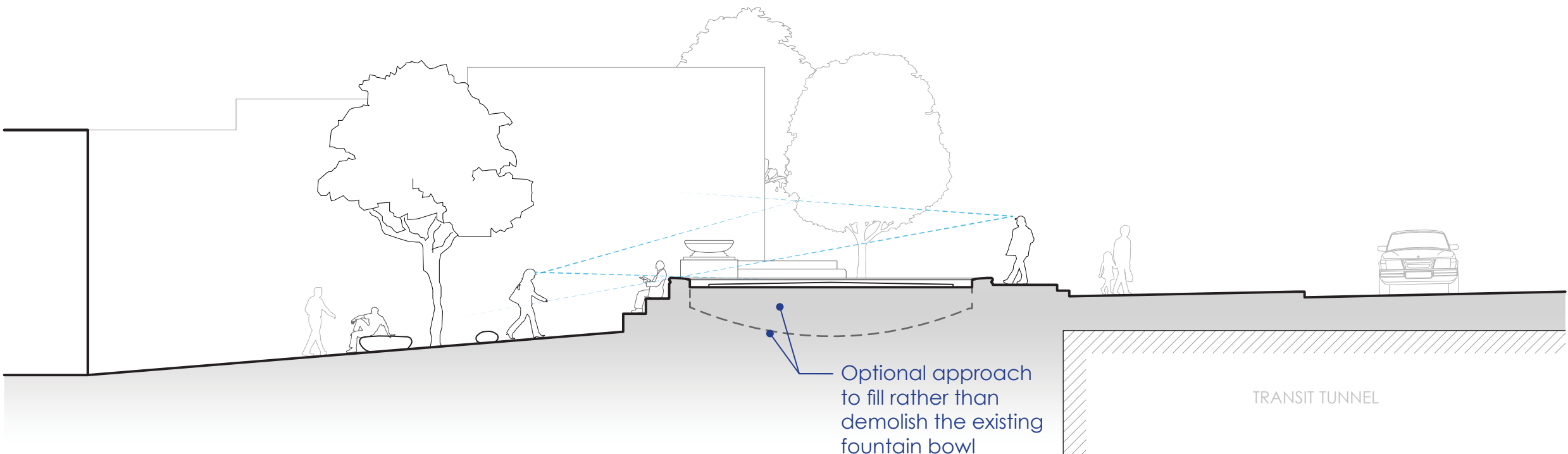


PREFERRED SCHEMATIC DESIGN
SITE SECTION COMPARISON WITH VIEWSHEDS | Section Elevation 'A'

Section Elevation 'A'

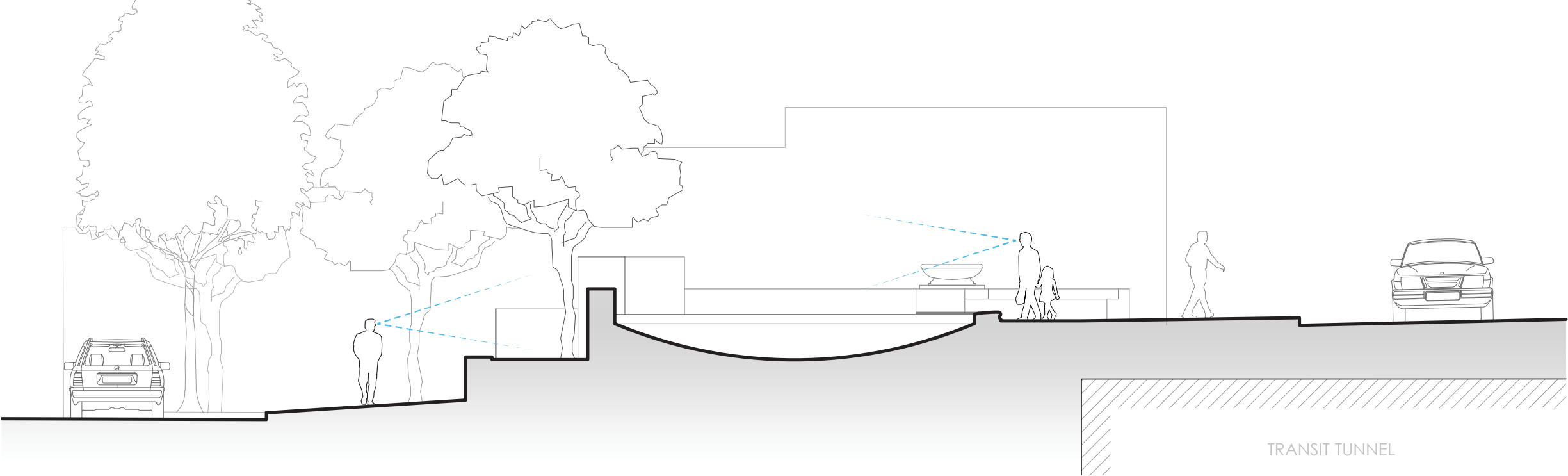


SECTION ELEVATION 'A' | EXISTING CONDITIONS

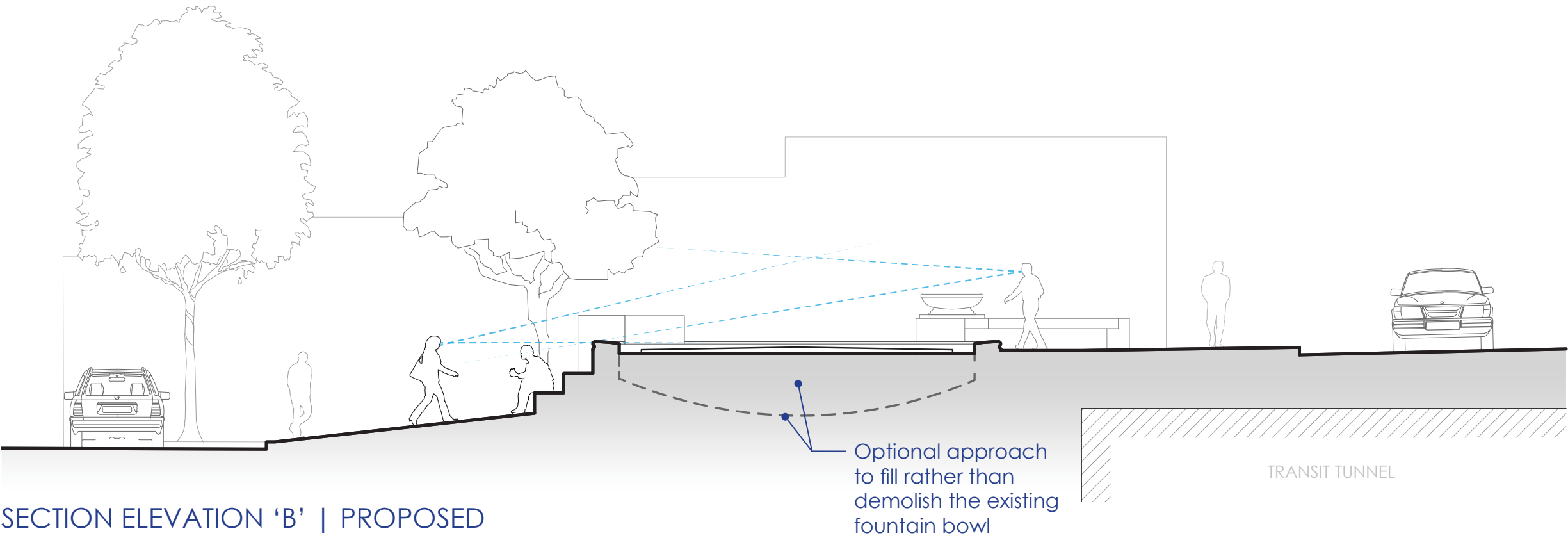


SECTION ELEVATION 'A' | PROPOSED

PREFERRED SCHEMATIC DESIGN
SITE SECTION COMPARISON WITH VIEWSHEDS | Section Elevation 'B'



SECTION ELEVATION 'B' | EXISTING CONDITIONS



SECTION ELEVATION 'B' | PROPOSED

