

# LUSIO

## SHINE ON SEATTLE



**LUSIO**

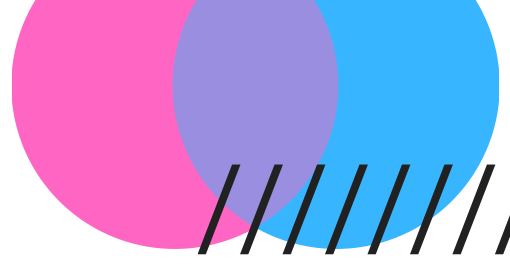
[lusiolight.com](http://lusiolight.com)

Mollie Bryan

[lusiolight@gmail.com](mailto:lusiolight@gmail.com)

206-383-6951





**Dates : Tentatively March - May 1st**

## **Program Outline**

**Local light artists transform empty storefronts and public spaces throughout Pioneer Square through a partnership between the Downtown Seattle Association, Lusio Light and downtown property owners.**

**Shine On Seattle** is a joint effort of DSA, Alliance for Pioneer Square, and Lusio to enrich the public realm while elevating Seattle's creative talent. This program is intended to provide moments of light and delight for those who live, work, and visit in Pioneer Square during the dark winter and spring months.

This proposal is an iteration of an installation that was placed on the Occidental Pavilion in 2021 with coordination and approval by Seattle Parks and Recreation. The scope of the piece and all installation methods are identical to those previously conducted. Careful attention was put into selection of materials and have been approved again via the SPR Preview process on 2/6/2024. Installation will be coordinated and conducted by PNTA, a local theater and stage company with deep experience in high-quality methods.





## Mokedo Outside Exhibit

Location: Occidental Pavilion in Occidental Square

LED Sculpture - white pvc chain, LED lights, mirrors

[Link to Artist Website](#)

[Link to Video of 2021  
Installation](#)

- The chain is attached to galvanized steel aircraft cable also called uni-strut wires, which are strung across the width of the pavilion.
- The cables are attached to a long piece of galvanized steel uni-strut channel - a long piece of metal the length of the exhibit. This metal is made for the uni-strut cables to attach to.
- The uni-strut channel is strapped to the beams of the pavilion with industrial grade ratchet straps.
- LED lights are attached to the uni-strut channel with professional HEX LED light truss clamps.
- Every connection point on the pavilion is protected with a layer of thick protective neoprene to ensure there is no damage to the structure.
- No drilling or permanent attachments will be used in any of the elements.





## Examples of the attachment parts



Uni-Strut Channel



Aircraft Cable / Uni-Strut Rope



LED light C clamp



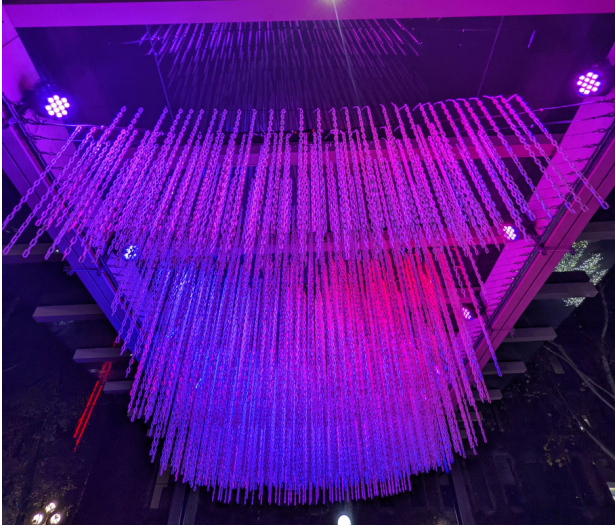
Ratchet Straps



PVC Chain





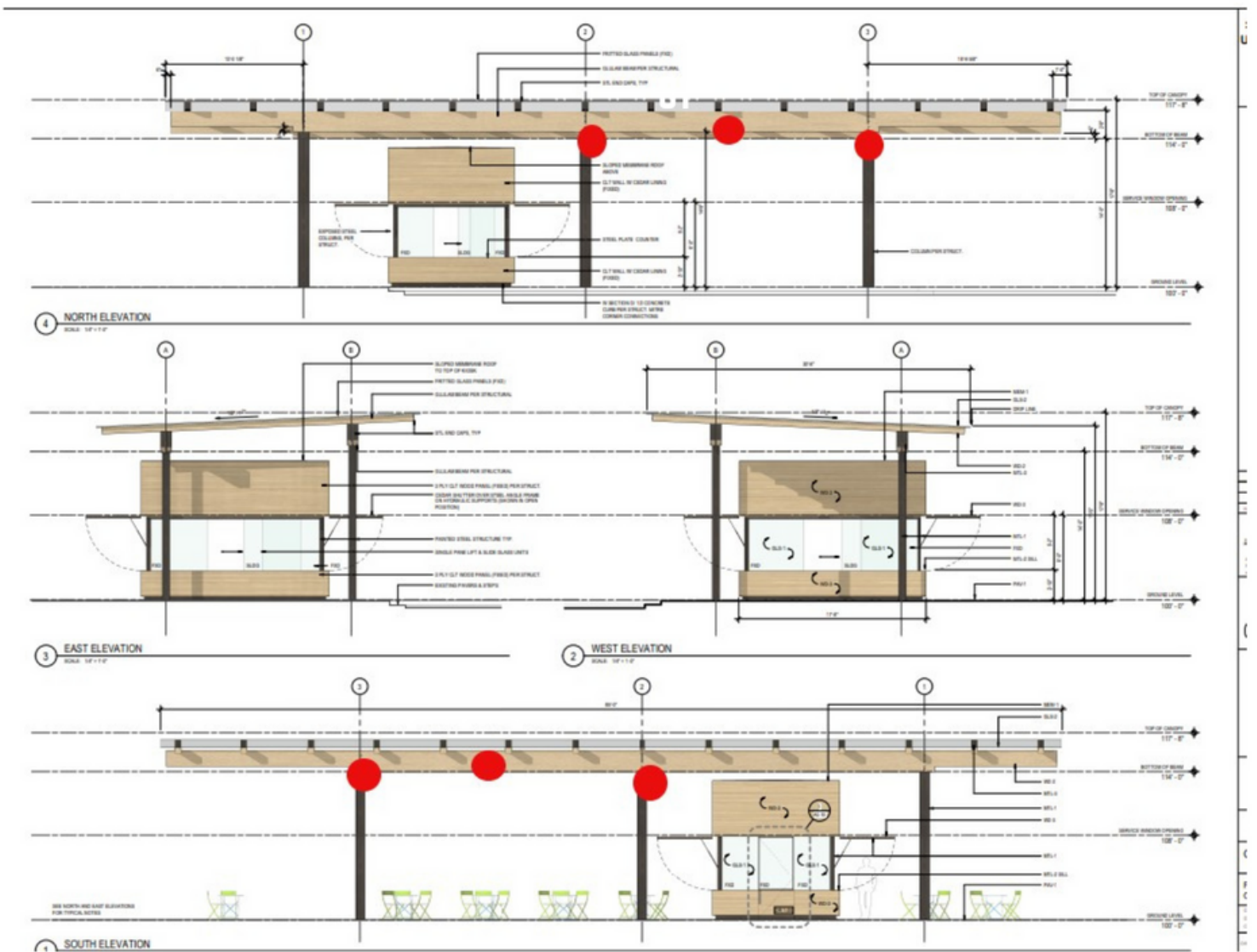
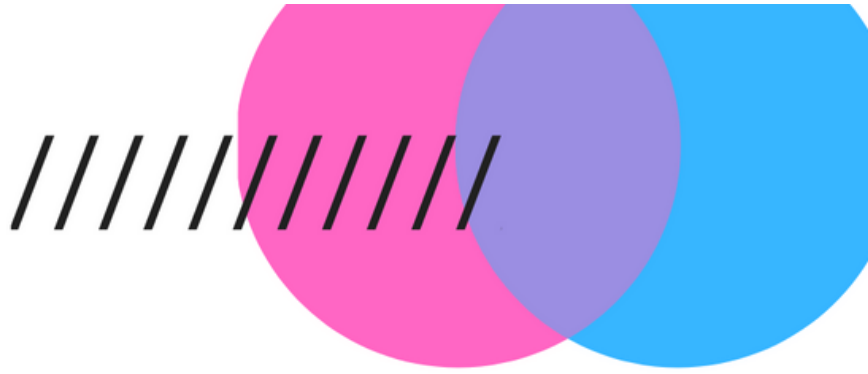




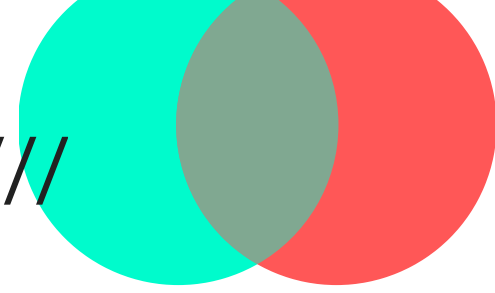








# LUSIO LIGHTS UP LIFE



Lusio's ultimate goal is to promote community well-being and happiness through the mesmerizing art of light. We not only aim to showcase the exceptional work of talented light artists, but also to provide accessible spaces for their creations. The beauty of light art lies in its minimal impact on the environment and its ability to captivate people of all backgrounds.

Over the course of the past 9 years, LUSIO has proudly supported over 550 artists, with a particular focus on underrepresented communities such as LGBTQA and BIPOC. We strongly believe in promoting equality and equity in our work.

With our extensive experience, LUSIO has enlivened historic and public spaces, creating enchanting and immersive experiences for audiences of all ages. From large-scale light festivals covering up to 40 acres, complete with sound stages and exhibits, to intimate AV concerts, hands-on workshops, and even private corporate events, we have designed unforgettable moments. Our repertoire also includes public art programs, event lighting services, and interactive AV experiences. In fact, we were behind the largest projection mapping video experience in Seattle to date, which showcased the Let There Be Light program on the towering 225 ft headhouse of the Pier 62 silo in 2018.

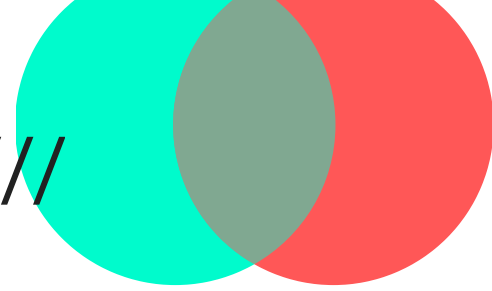
*Feel free to view it [here](#).*

Some of the notable venues that have served as our "canvases" include the Seattle Asian Art Museum, Volunteer Park & Conservatory, Occidental Park, the Metro Parks W.W. Seymour Conservatory, and the Mary Olson Farm.

In addition to our artistic endeavors, LUSIO has successfully raised more than \$100,000 for local nonprofits by organizing curated fundraisers. We have also collaborated with esteemed organizations such as Pacific Science Center, Expedia, Google Cloud, Friends of the Conservatory, TUNE, and Port of Seattle.

Join us in the pursuit of creative brilliance, community unity, and the celebration of light.

# WHY CHOOSE LUSIO?



## **Experience Opportunity:**

Most light art installations are confined to galleries, festivals, or private events. But in Seattle, Lusio provides a unique opportunity for artists to showcase their work to a wide audience in a curated yet playful setting. It's a chance for their voices to be heard and their talent to be seen.

## **Accessibility in Art:**

While light art has made its way to the Pacific Northwest, it often requires attending exclusive events like Burning Man, which can be costly. Lusio breaks down these barriers by offering a free, family-friendly events that welcomes people of all demographics as well as paid events, which provide paid jobs for local artists. Art should be accessible to everyone, and Lusio ensures just that.

## **Embrace Playfulness:**

In the midst of our technologically advanced world, we often forget the joy of play. Lusio reminds us that technology can be playful too. By engaging in playfulness, we can reduce stress, enhance brain function, fuel creativity, foster connections, improve social skills, and promote overall well-being. And that's not all - it's also incredibly fun!

**Choose Lusio - where opportunity, accessibility, and playfulness come together to create an unforgettable art experience.**

**Links to media and past events**

**[Projection Mapping Video Compilation](#)**

**[Previous Lusio Events and Exhibits](#)**

**[Instagram @lusiolights](#)**





LUSIO



# LUSIO'S PAST PARTNERS & SUPPORT

EXPEDIA  
4CULTURE  
PIONEER SQUARE ALLIANCE  
SEATTLE DOWNTOWN ASSOC.  
GOOGLE CLOUD  
WA ENVIRONMENTAL COUNCIL

AWESOME FOUNDATION  
PATCHWERKS  
CITY OF BURIEN  
PORT OF SEATTLE  
EXPLORE AUBURN

## MEDIA

SEATTLE TIMES  
VIDEO FEATURE

"Seattle artists light up nights,  
bring people together!"

CAPITOL HILL  
SEATTLE

3rd Annual Lusio Festival Review

THE STRANGER  
CITY ARTS MAGAZINE  
SEATTLE P.I.  
THE NEWS TRIBUNE  
PARENTMAP  
SEATTLE MET  
SEATTLE WEEKLY



# PROVIEW MEETING MINUTES - 2/6/2024

## Occidental Square Shine On Art

REVIEWER	CATEGORY	COMMENT
Redi Karameto	Consider	How are the lights controlled (on/off) and operation hours?
Redi Karameto	Required	Flashing lights may cause a physical/health reaction. Please avoid having any flashing light.
Redi Karameto	Required	Will installation and removal be possible to do solely from the ground, using lifts? Walking over the pavilion glass/structure should not be permitted. Please make sure that the installation is done in a manner where nobody is having to walk on top of the pavillion.
Rachel Banner	General	Approved.