

Corner Market Building
94 Pike Place #36
Seattle WA 98101

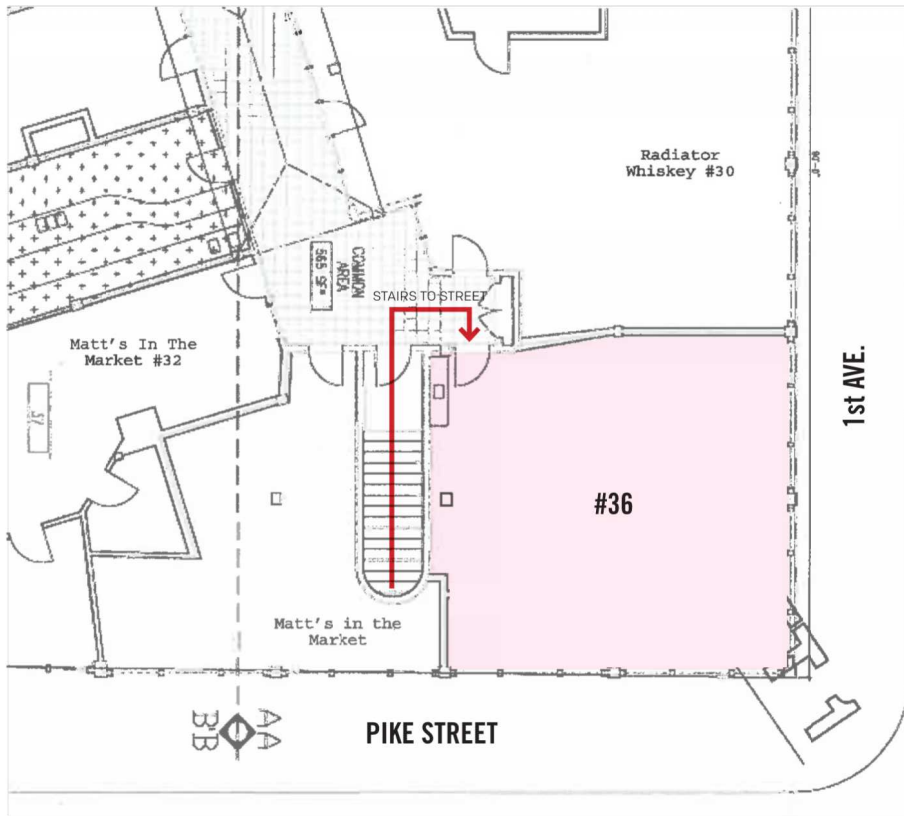


DESIGN REVIEW DOCUMENTS

January 23, 2023

CORRECTION - 02.28.2023

SITE PLAN



🕒 NOT TO SCALE

Site Plan & Existing Photos

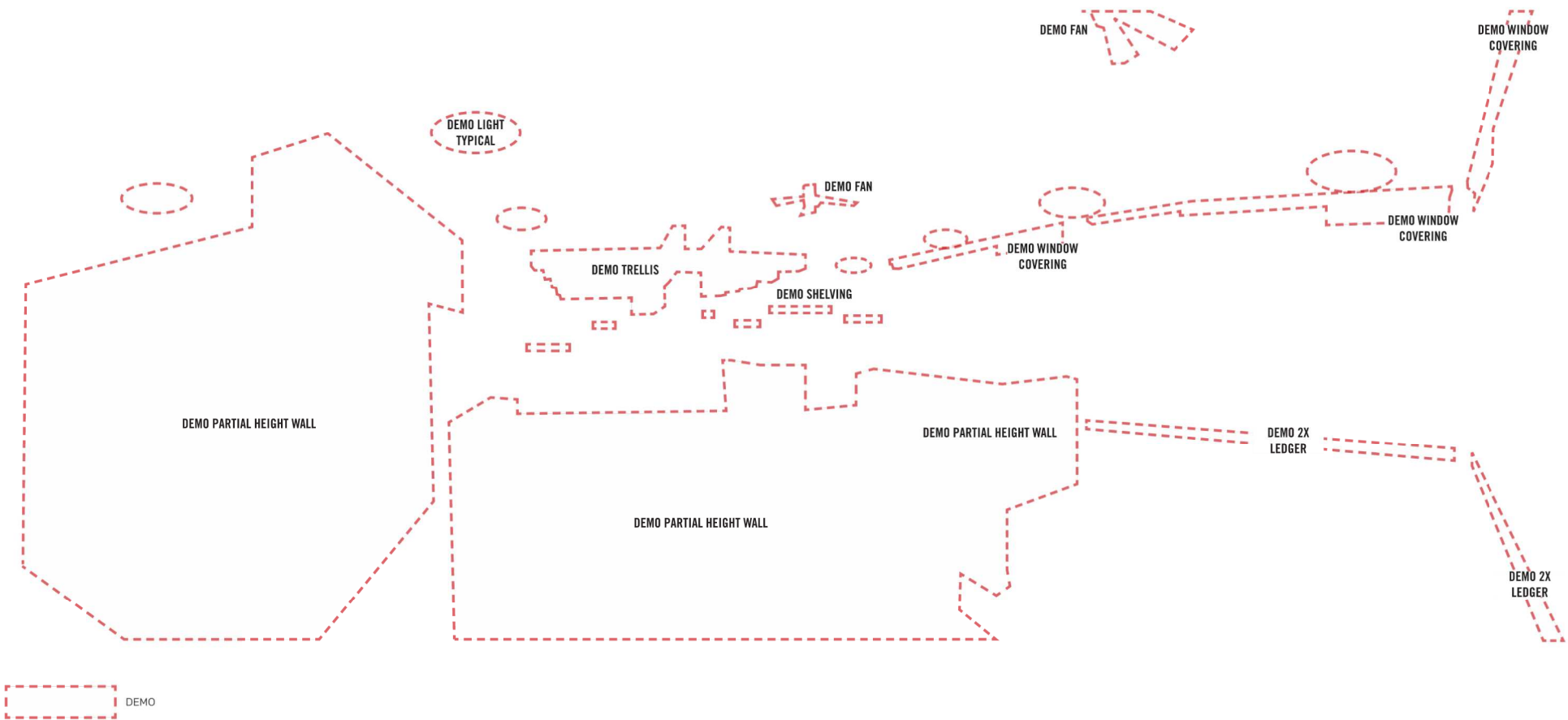
Mutual Arts Collective

EXISTING PHOTOS



Existing Photo - NORTH

Mutual Arts Collective



Existing Photo - NORTH DEMO

Mutual Arts Collective



Existing Photo - SOUTHEAST

Mutual Arts Collective



 DEMO

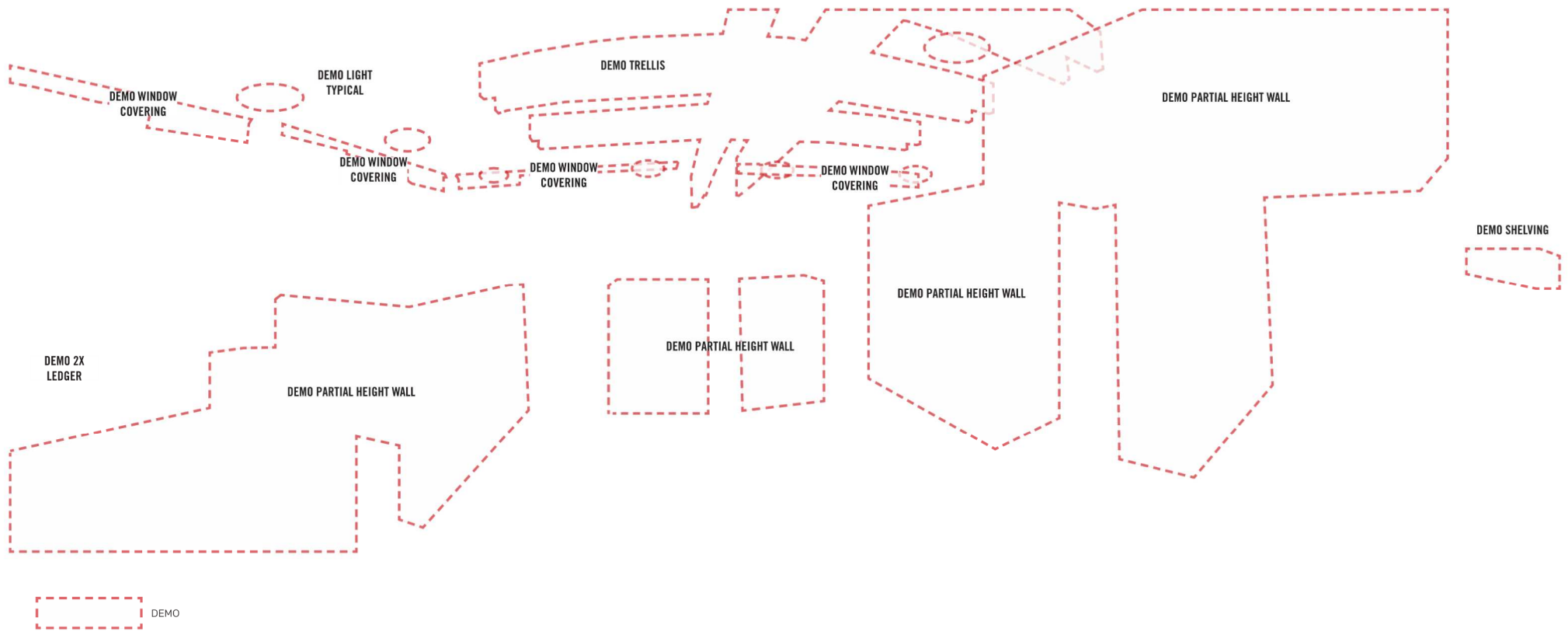
Existing Photo - SOUTHEAST DEMO

Mutual Arts Collective



Existing Photo - SOUTH

Mutual Arts Collective



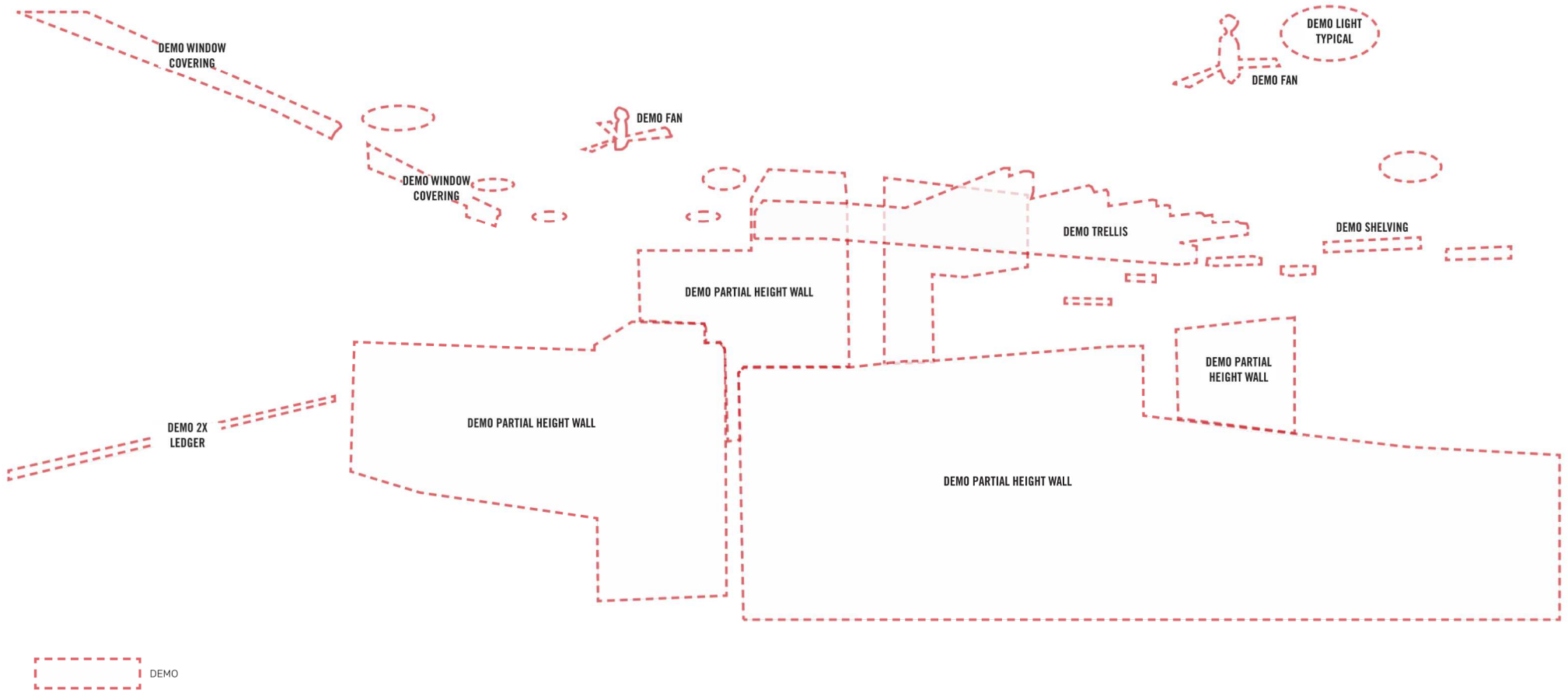
Existing Photo - SOUTH DEMO

Mutual Arts Collective



Existing Photo - WEST

Mutual Arts Collective



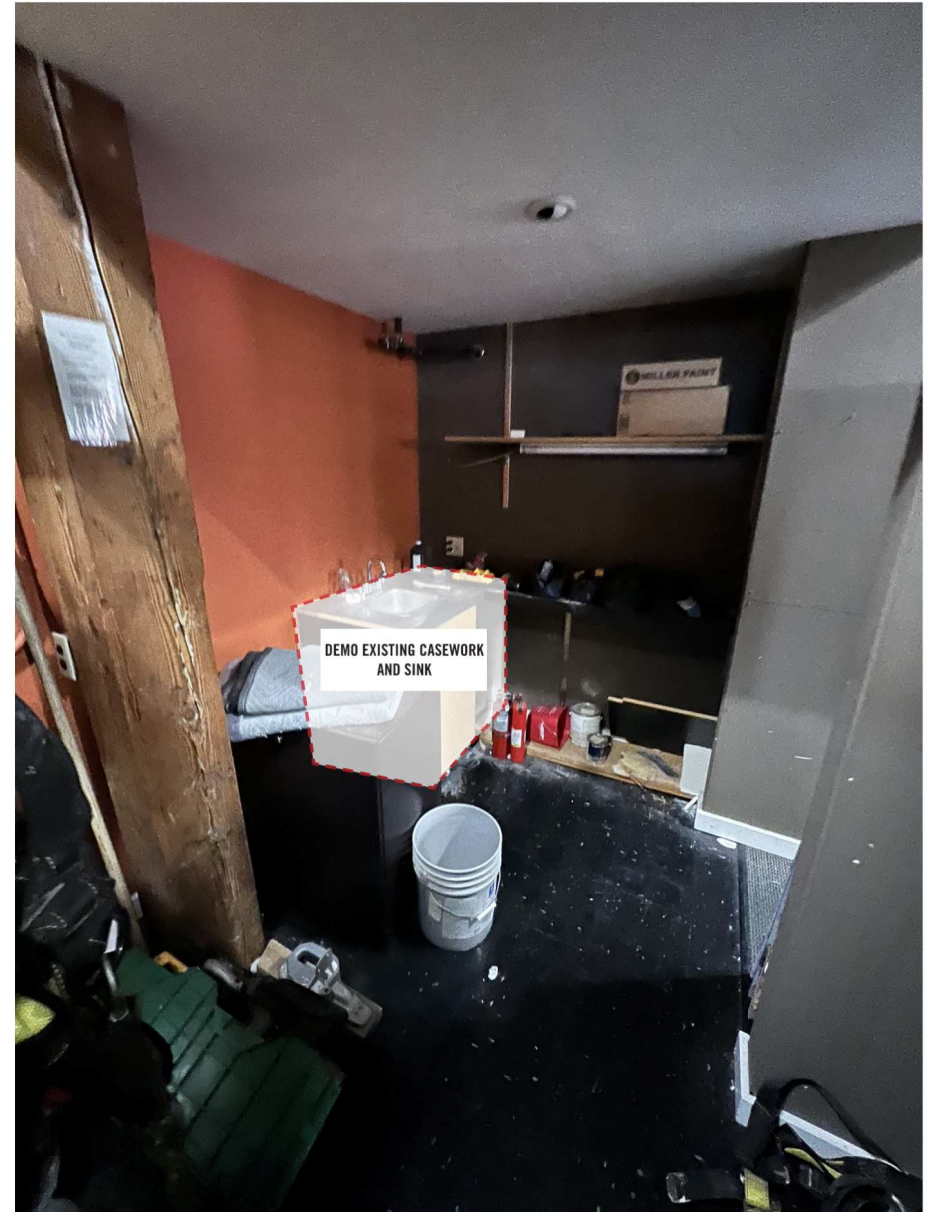
Existing Photo - WEST DEMO

Mutual Arts Collective



Existing Photo - Kitchenette

Mutual Arts Collective



Existing Photo - Kitchenette DEMO



FLOORPLANS

CEILING NOTES

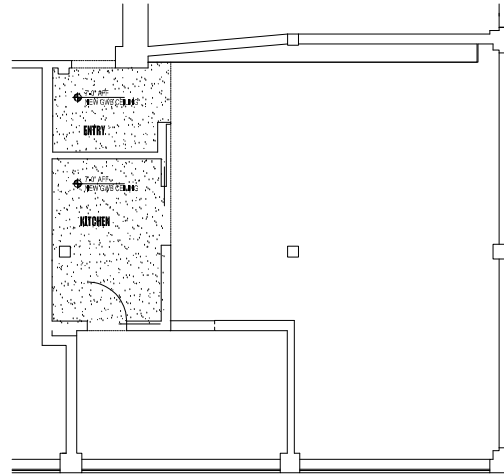
1. PROVIDE POWER RECEPTACLES AS REQUIRED BY CODE, (SCHEMA STYLE TYPE)
 2. COORDINATE ALL SWITCHING, POWER, LOWVOLTAGE, ETC. W/ OWNER PRIOR TO INSTALLATION
 3. REFER TO FUR PLAN, INC. ELEVATIONS & CABINETRY SCHEDULES FOR FURTHER INFO ON PLACEMENT OF ITEMS SHOWN ON ELECTRICAL PLANS
 4. COORD. POWER REQUIREMENTS TO CABINETRY W/ CABINET MANUFACTURER
 5. COORDINATE AND PROVIDE POWER PROPANE TO APPLIANCES PER MANUFACTURER SPECIFICATIONS
 6. FLOOR BOX RECEPTACLES LOCATE AS SHOWN. PRODUCT CABLE/TYPE/FB BOX W/ EIT/SIT TWO DOOR COVER PLATE
 7. SWITCHING SCHEMATIC INTENDED TO ILLUSTRATE DESIRED LIGHTING CONTROL ONLY. ACTUAL WIRING LAYOUTS PER ELECTRICAL CONTRACTOR
 8. PROVIDE PROGRAMMABLE DIMMER SWITCH OVERIDE FOR LAUNDRY FAN TO PROVIDE CODE REQD AIR CHANGES PER HOUR
 9. USE ELECTRONIC LOWVOLTAGE DIMMER ON DIMMABLE FLUORESCENT FIXTURES
- SUSPENDED TRACK LIGHT ROO

ELECTRICAL LEGEND:

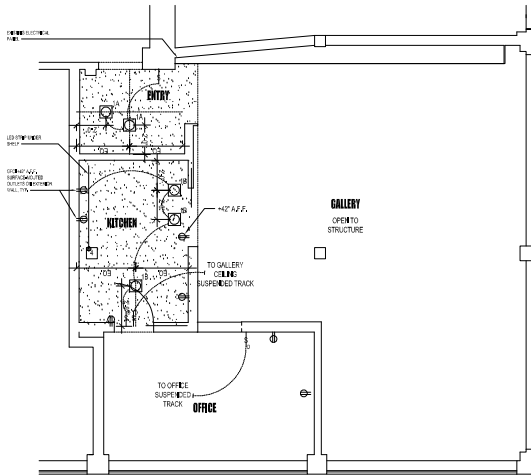
	RECESSED LIGHT FIXTURE		DUPLEX WALL OUTLET
	CEILING MOUNT LIGHT FIXTURE		DUPLEX WALL OUTLET - EXTERIOR LOCATION
	WALL MOUNT LIGHT FIXTURE		DUPLEX WALL OUTLET - WET LOCATION
	LED STRIP LIGHTING		DUPLEX WALL OUTLET - ONE RECEPTACLE SWITCHED
	TRACK LIGHTING		DUPLEX FLOOR OUTLET
	SMOKE (CARBON MONOXIDE) DETECTOR		DUPLEX FLOOR OUTLET - ONE RECEPTACLE SWITCHED
	TELEPHONE (PROVIDE POWER FOR CORDLESS)		HEIGHT FROM FLOOR FLOOR TO CTR. OF DEVICE
	THERMOSTAT		SWITCH WITH DIMMER
	REMOTE TRANSFORMER (LOW-VOLT)		SWITCH WITH TIMER
	DATA NETWORK CONNECTION		THREE-WAY SWITCH
	SPEAKER OR SPEAKER JACK		APPLIANCE POWER SOURCE

ELECTRICAL NOTES:

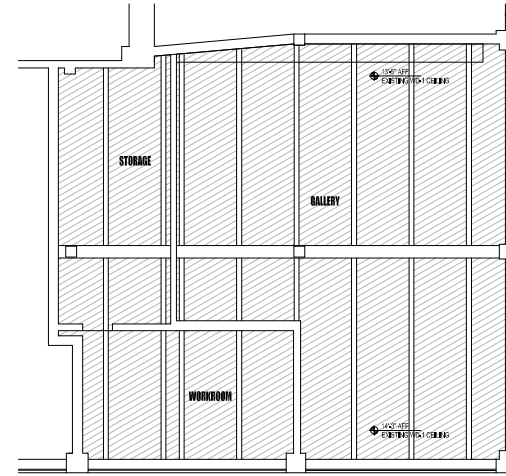
1. PROVIDE AND MAINTAIN REQUIRED WORKSPACE ILLUMINATION ADEQUATE ACCESS TO WORKSPACE, AND HEADROOM FOR AND ABOVE ELECTRICAL EQUIPMENT
2. ELECTRICAL SUSCEPTIBLE W/ WET LOCATIONS IN CLOTHES CLOSETS OR BATHROOMS
3. HOT AND COLD WATER METALLIC PIPES AT THE WATER HEATER MUST BE BONDED TOGETHER
4. BONDING SHALL BE PROVIDED WHERE NECESSARY TO ENSURE ELECTRICAL CONTINUITY AND THE CAPACITY TO CONDUCT MAIN FAULT CURRENT (LIKELY TO BE IMPOSED). REFER TO ARTICLES 250.42 AND 250.48 (SERVICES), 250.49 (OTHER ENCLOSURES) AND/OR 250.49 (FIBER SYSTEMS)
5. PROVIDE REQUIRED GFCI RECEPTACLES FOR THE KITCHEN COUNTER EVERY 2 FT., REQUIRED AT 12" OR GREATER KITCHEN COUNTER AREAS AND 1 GFCI RECEPTACLE AT THE ISLAND OR PENINSULA.
6. PROVIDE A RECEPTACLE WITH 6 FT. OF ANY PROTECTIVE ALONG WALLS IN DRYABLE ROOMS. THE MINIMUM WALL SPACE IS 2 FT. FOR RECESSED RECEPTACLES, FLOOR RECEPTACLES DO NOT MEET THIS REQUIREMENT UNLESS 6 FT. MINIMUM OF THE WALL.
7. A MINIMUM OF 1 SMALL APPLIANCE 20 AMP CIRCUIT IS REQUIRED FOR THE KITCHEN. FIELD VERIFY LOCATION WITH THE ARCHITECT.
8. PROVIDE GFCI PROTECTION ON RECEPTACLES LOCATED IN BATHROOMS, LAUNDRY ROOMS, GARAGES, OUTDOORS, CRAWLSPACES, UNFINISHED BASEMENTS, AND WET BARS OF DWELLING UNITS. PROVIDE A DEDICATED CIRCUIT FOR RECEPTACLES IN DWELLING UNIT BATHROOMS.
9. ALL BRANCH CIRCUITS THAT SUPPLY 120VOLT, SINGLE-PHASE, 15 AND 20 AMPERE OUTLETS (RECEPTACLES, LIGHTING, OUTLETS, AND SMOKE DETECTORS) INSTALLED IN DWELLING UNIT BEDROOMS SHALL BE PROTECTED BY AN ARC-FULT CIRCUIT INTERRUPTER (AFCI) TO PROVIDE PROTECTION OF THE DWELLING POWER CIRCUIT.
10. 15 AND 20 AMPERE, 125 AND 250 VOLT RECEPTACLES INSTALLED OUTDOORS IN WET LOCATIONS SHALL HAVE AN ENCLOSURE THAT IS WEATHERPROOF WHETHER OR NOT THE ATTACHMENT PLUG IS INSERTED.
11. LAMPS USED IN LUMINAIRES FOR GENERAL LIGHTING IN KITCHEN AND BATHROOMS SHALL HAVE EFFICACY OF NOT LESS THAN 40 LUMENS PER WATT. LAMPS USED TO MEET THE 40 LUMENS PER WATT OR LESS MUST BE SWITCHED SEPARATELY FROM INCANDESCENT FIXTURES.
12. A PERMANENTLY WIRED SMOKE DETECTOR WITH BATTERY BACKUP IS REQUIRED FOR THE FOLLOWING: (a) AREA GIVING ACCESS TO SLEEPING ROOMS AND (b) A ROOM THAT OPENS TO A HALLWAY SERVING A BEDROOM AND THE HALLWAY, PROVIDED THAT THE CEILING OF THE ROOM EXCEEDS THE HALLWAY BY 2 INCHES.



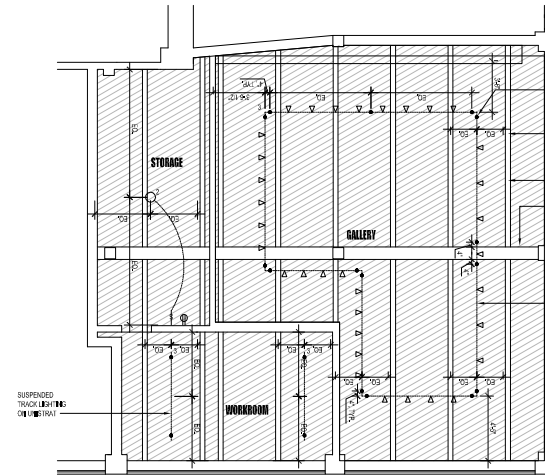
1 REFLECTED CEILING PLAN - MAIN LEVEL
SCALE: 1/4" = 1'-0"



3 ELECTRICAL PLAN - MAIN LEVEL
SCALE: 1/4" = 1'-0"



2 REFLECTED CEILING PLAN - STORAGE PLATFORM
SCALE: 1/4" = 1'-0"



4 ELECTRICAL PLAN - STORAGE PLATFORM
SCALE: 1/4" = 1'-0"

HELITROPE

14000 Aurora Blvd. PLLC
5100 Aurora Ave., #17 Suite B
Seattle, WA 98107
www.helitropestudio.com

MUTUAL ARTS COLLECTIVE

54 West 1st
SEATTLE, WA 98101

DESIGN DEVELOPMENT DOCUMENTS

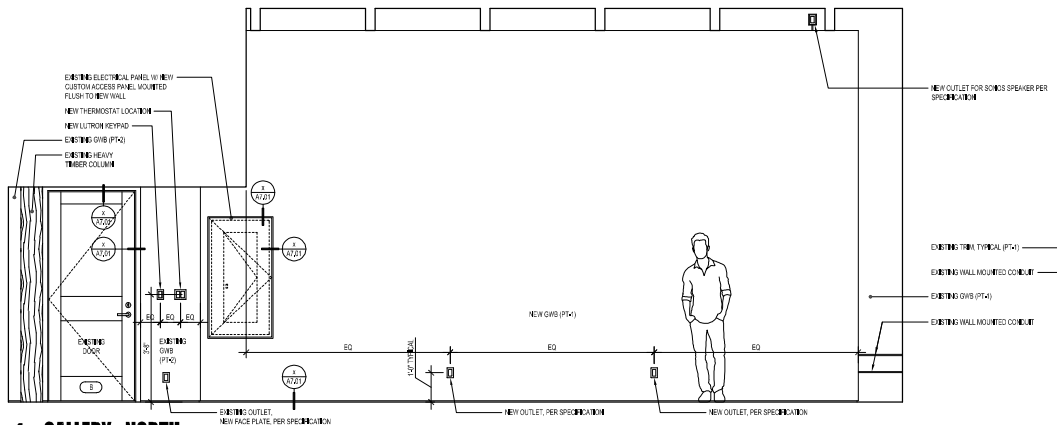
Issue Date Issue Description No.

Print Date: 1/23/2023

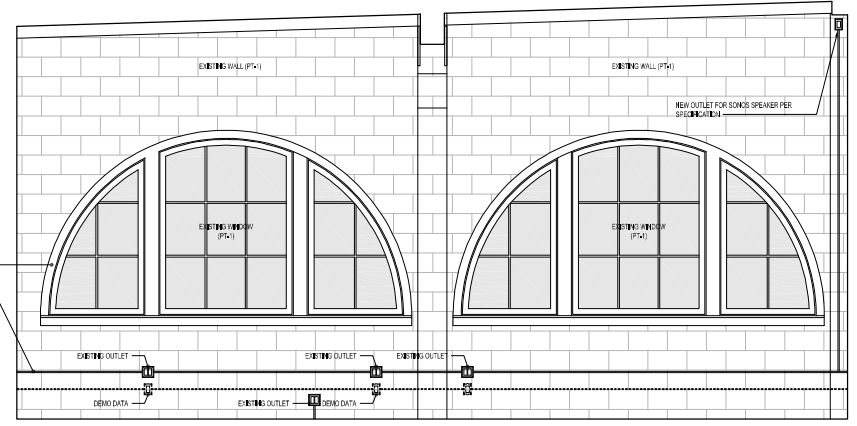
Sheet Title:
REFLECTED CEILING PLAN & ELECTRICAL PLAN

Sheet Number:
A2.01

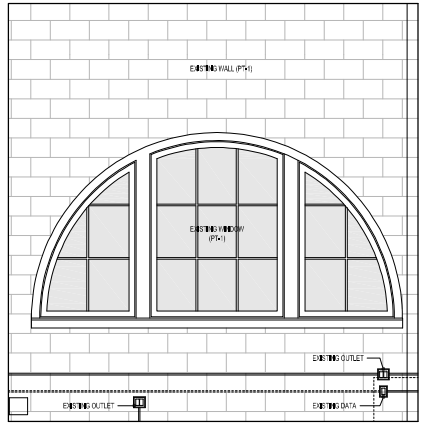
INTERIOR ELEVATIONS



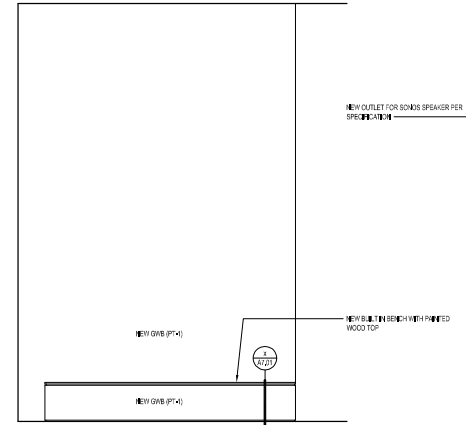
1 GALLERY - NORTH
 SCALE: 1/8"=1'-0"



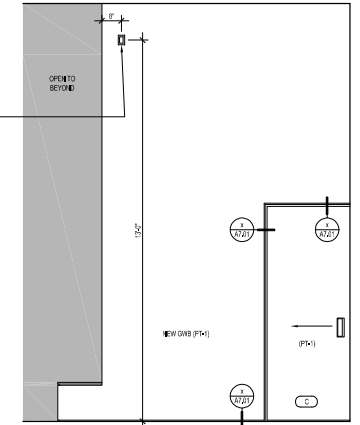
2 GALLERY - EAST
 SCALE: 1/8"=1'-0"



3 GALLERY - SOUTH
 SCALE: 1/8"=1'-0"



4 GALLERY - WEST
 SCALE: 1/8"=1'-0"



5 GALLERY - SOUTH
 SCALE: 1/8"=1'-0"

HELIOTROPE
 Heliotrope Architects PLLC
 5140 15th Ave, NW Suite 3
 Seattle, WA 98107
 www.heliotropearch.com

MUTUAL ARTS COLLECTIVE

34 West 4th Ave
 Seattle, WA 98101

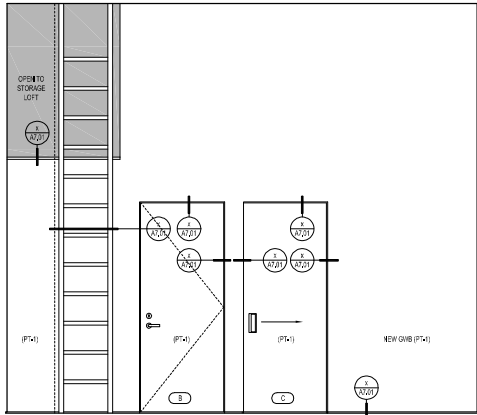
DESIGN DEVELOPMENT DOCUMENTS

Issue Date	Issue Description	No.

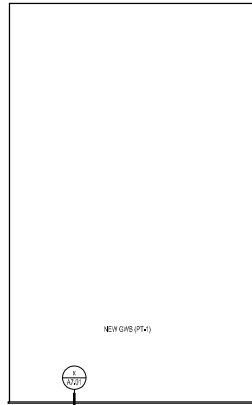
Proj: Date: 1/23/2023

Sheet Title:
INTERIOR ELEVATIONS

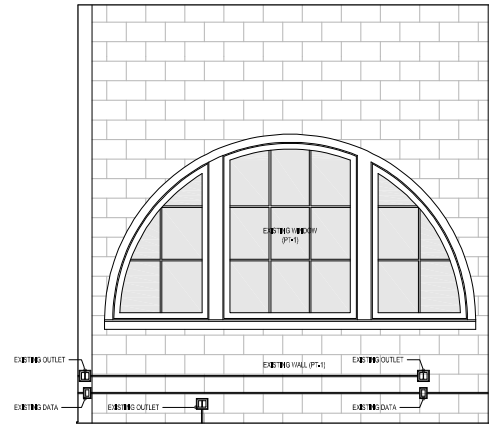
Sheet Number:
A5.01



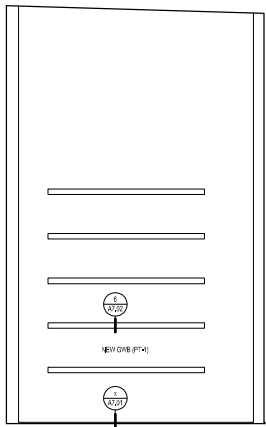
1 WORKROOM - NORTH
SCALE: 1/2"=1'-0"



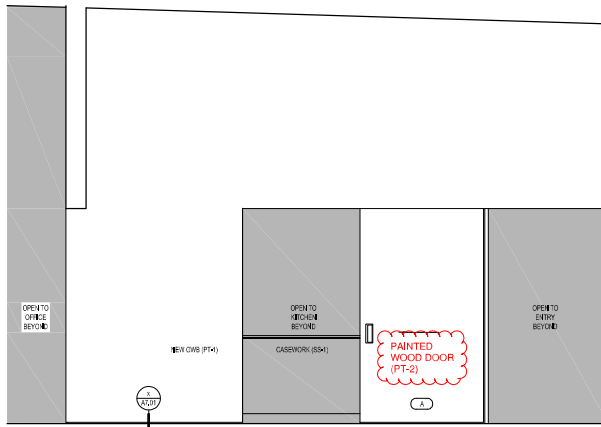
2 WORKROOM - EAST
SCALE: 1/2"=1'-0"



3 WORKROOM - SOUTH
SCALE: 1/2"=1'-0"



4 WORKROOM - WEST
SCALE: 1/2"=1'-0"



5 GALLERY - WEST
SCALE: 1/2"=1'-0"

HELIOTROPE

Heliotrope Architecture PLLC
1540 10th Ave, 4th Floor
Seattle, WA 98107
www.heliotropearch.com

MUTUAL ARTS COLLECTIVE

84 Pike Pl, #208
Seattle, WA 98101

DESIGN DEVELOPMENT DOCUMENTS

Issue Date	Issue Description	No.

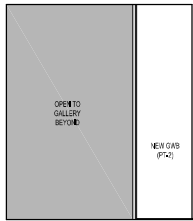
Print Date: 1/23/2023

Sheet Title:

INTERIOR ELEVATIONS

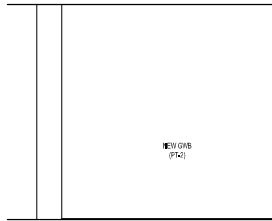
Sheet Number:

A5.02



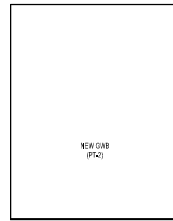
1 ENTRY - EAST

SCALE: 1/2"=1'-0"



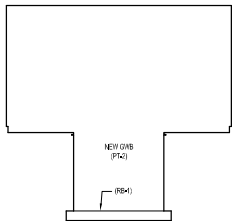
2 ENTRY - SOUTH

SCALE: 1/2"=1'-0"



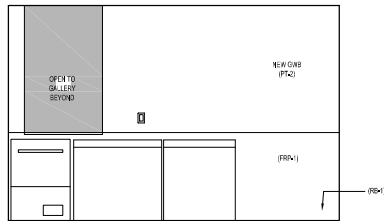
3 ENTRY - WEST

SCALE: 1/2"=1'-0"



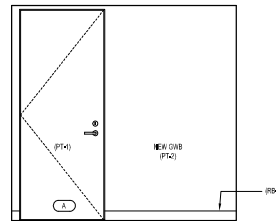
4 KITCHEN - NORTH

SCALE: 1/2"=1'-0"



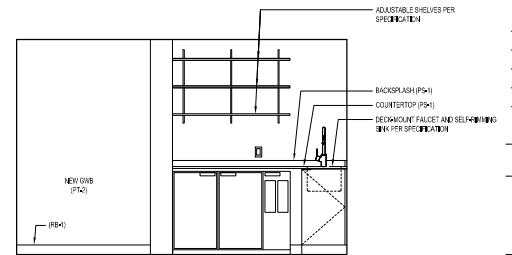
5 KITCHEN - EAST

SCALE: 1/2"=1'-0"



6 KITCHEN - SOUTH

SCALE: 1/2"=1'-0"



7 KITCHEN - WEST

SCALE: 1/2"=1'-0"

HELITROPE

Mutual Arts Collective PLLC
 2140 1st Avenue, NW Suite B
 Seattle, WA 98107
 www.mutualartscollective.com

MUTUAL ARTS COLLECTIVE

1414 1st Ave
 SEATTLE, WA 98101

DESIGN DEVELOPMENT DOCUMENTS

Rev. Date: Rev. Description: No.

Rev. Date	Rev. Description	No.

Print Date: 1/23/2023

Sheet Title:

INTERIOR ELEVATIONS

Sheet Number:

A5.03

INTERIOR FINISHES

NEW FLOORING

(WD-1)



New Wood Floor - Clear Doug Fir throughout space

NEW DRYWALL PARTITION

(PT-1)



Benjamin Moore Paint
(Main Wall Color in Gallery)
White Dove
Flat Sheen

(PT-2)



Benjamin Moore Paint
(Accent Wall Color at Entry)
Kendall Charcoal
Satin Sheen

(door color)

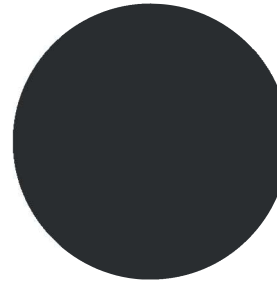
KITCHEN

(SS-1)



Paperstone Countertops
at Kitchen
Matte Black

(PLAM-1)



Laminate Cabinetry
at Kitchen
Matte Black

LIGHTING

(FIXTURE-3)

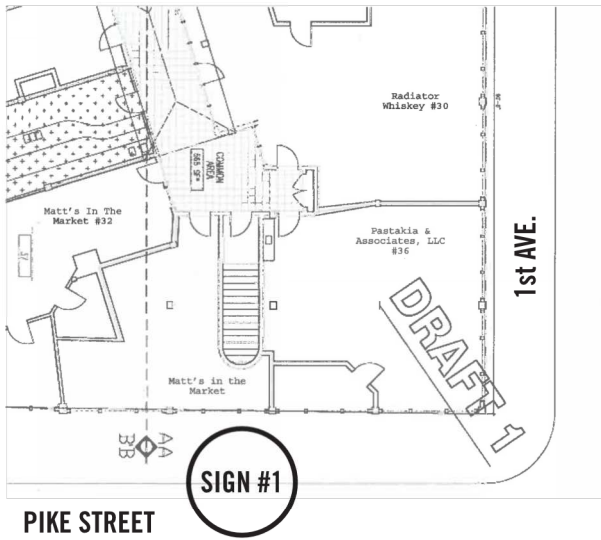


Ceiling suspended white track lighting throughout space

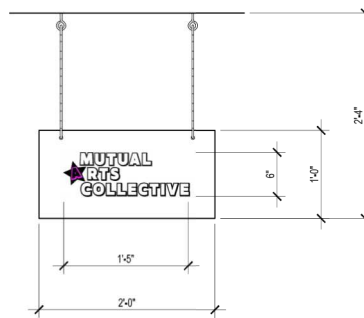
Color Temperature:
2700k

Interior Finishes

SIGNAGE



SIGN #1



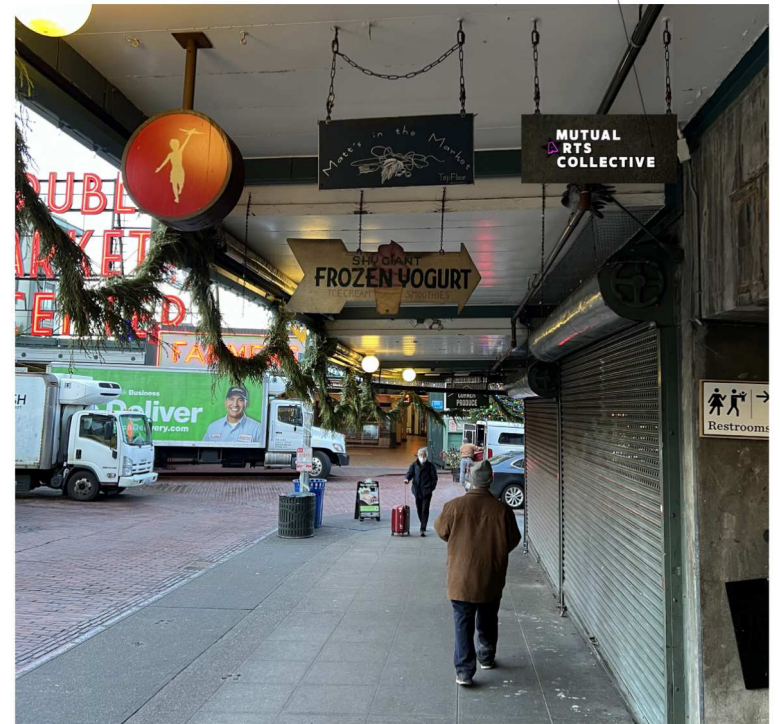
Steel plate panel with acrylic letter

1-1/2" height letter

Custom Font

Metal chain, screw eyes to marquee

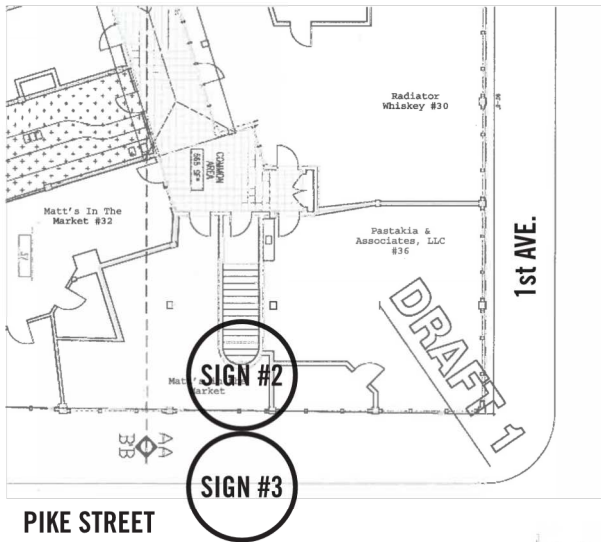
Matte Finish



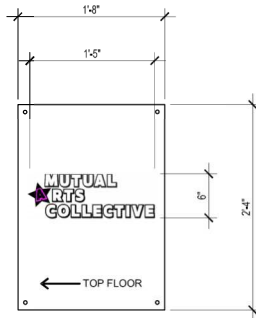
Sign 1 - Marquee from Pike Street

Sign #1

Mutual Arts Collective



SIGN #2



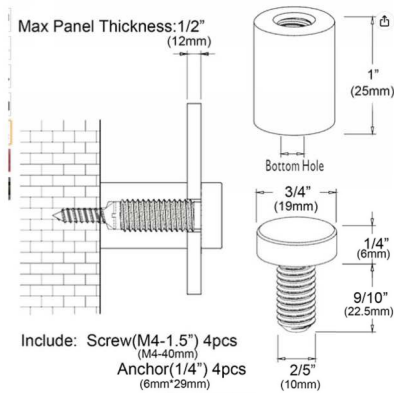
Black metal plate panel with acrylic letter

Matte Finish

1-1/2" height letter

Custom Font

Wall standoffs below:



Include: Screw (M4-1.5") 4pcs (M4-40mm)
Anchor (1/4") 4pcs (6mm*29mm)
Roll over image to zoom in

SIGN #3

Replace new lettering for #36 tenant

1" letter height

Custom Font to match others

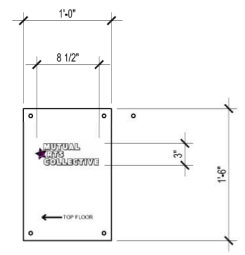
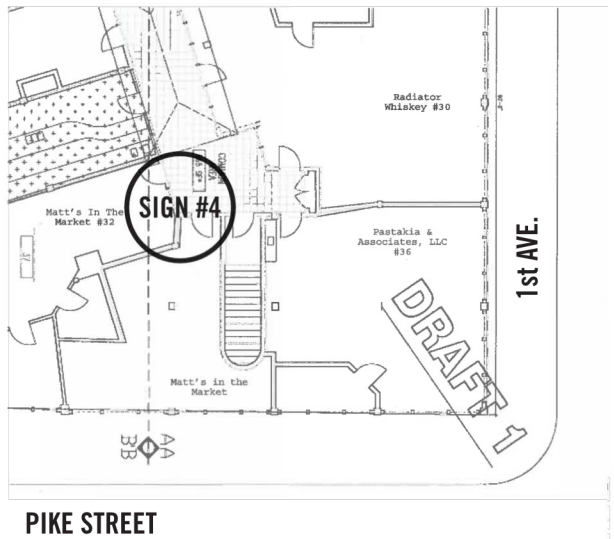


Sign 2 & 3 - Level 1 entry to stair from Pike Street

Sign #2 & Sign #3

Mutual Arts Collective

SIGN #4

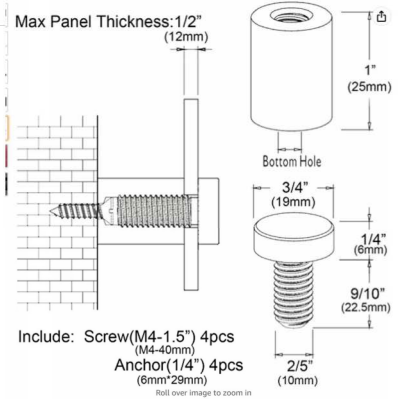


Steel plate panel with acrylic letter
Matte Finish

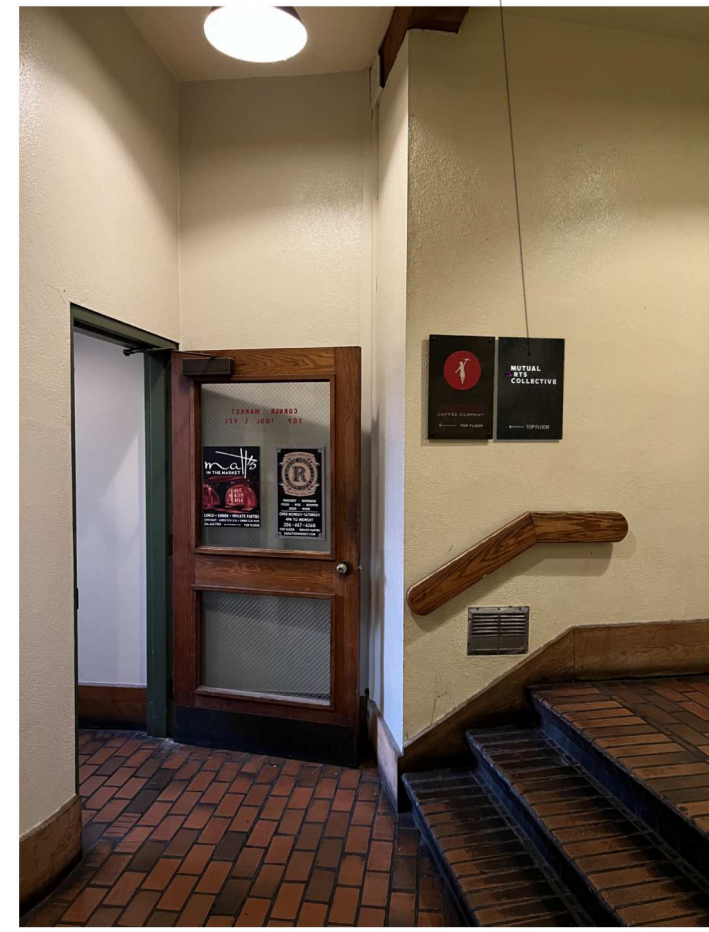
1-1/2" height letter

Custom Font

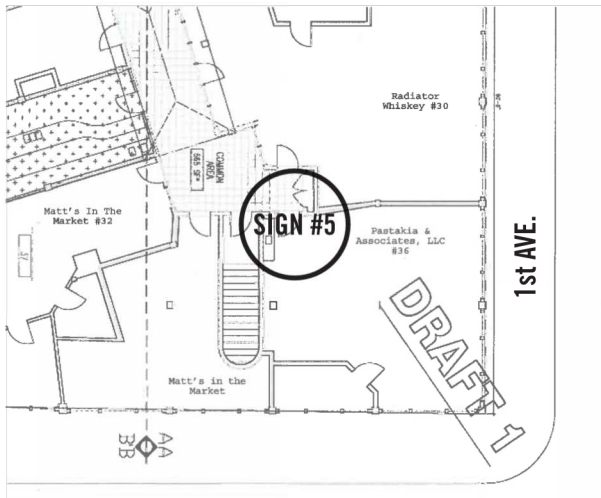
Wall standoffs below:



Include: Screw(M4-1.5") 4pcs
(M4-40mm)
Anchor(1/4") 4pcs
(6mm*29mm)
Roll over image to zoom in

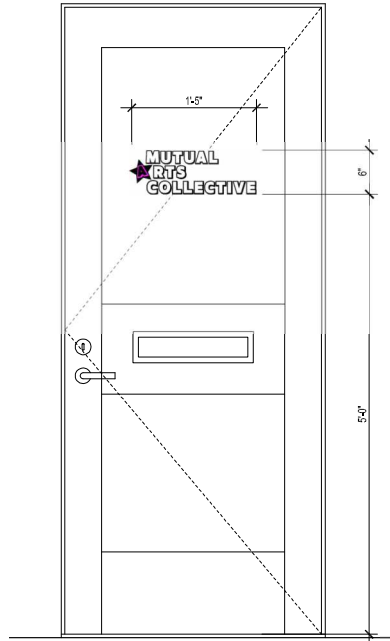


Sign 4 - Level 1 entry to stair



PIKE STREET

1st AVE.



acrylic letter on existing glass of existing door

1-1/2" height letter

Custom Font



Sign 5 - Level 2 on entry door

Sign #5

Mutual Arts Collective

EQUIPEMENT AND FIXTURE CUTSHEETS



KETRA

P/N 3662383 Rev I
Specifications are subject to change without notice

S30 Track Luminaire

The Ketra Difference:

High Def Palette—covers a wide range of 16.7 million colors, including pastels, saturated colors and high CRI whites spanning from 1,400K to 10,000K.

Dynamic Spectrum—precisely tunes the amount of energy across the visible spectrum to produce Natural Light, Natural Dimming and Vibrancy.

TruBeam—produces uniform color across any available beam angle.

Color Lock—maintains your desired color point at a one-step MacAdam Ellipse across all Ketra product families and over each product's lifetime.



ORDERING GUIDE

Please download this PDF to use the interactive drop down features of the ordering guide.

CM- Product Line	TA Series	S30 Form Factor	08 Lumens	CTSP System/ Beam Angle	11 Region / Voltage	G24 Base Type	H Adapter Type	WH Housing Color	SNT55 Accessory Type
---------------------	--------------	--------------------	--------------	-------------------------------	---------------------------	------------------	----------------------	------------------------	----------------------------

Order code: CM-TAS3008CTSP11G24HWHST55

Product Line	Code	System/Beam Angle	Code	Adapter Type	Code
Commercial (Athena compatible)	CM-	KetraNet Spot (15°)	CTSP	"H-Type" Compatible	H
Residential (HomeWorks compatible)	HW-	KetraNet Flood (25°)	BTFL	½ in (12.7 mm) NPT Canopy Mount	N
		KetraNet Wide Flood (40°)	BTWFL	Housing Color	
		KetraNet Very Wide Flood (60°)	BTVFL	White	WH
		KetraNet Extra Wide Flood (90° BR Style)	BTXFL	Black	BK
Model		CCX Spot (15°) ¹	GTSP	Accessory Type	
Track Luminaire	TA	CCX Flood (25°) ¹	GTFL	Short Snoot 55° cutoff	SNT55
Form Factor		CCX Wide Flood (40°) ¹	GTWFL	Tall Snoot 30° cutoff	SNT30
S30	S30	CCX Very Wide Flood (60°) ¹	GTVFL	Hex Louver 45° cutoff, includes SNT55	LUV45
Lumens		CCX Extra Wide Flood (90° BR Style) ¹	GTXFL	Baffle 15° cutoff, includes SNT30	BFL15
800	08	Region / Voltage		No Accessory	NA
1050	10	North America, 120 V~ 60 Hz	11		
		Base Type			
		GU24	G24		

¹ CCX stands for Clear Connect-Type X.



S30 TRACK LUMINAIRE

P/N 3662383 Rev I

Specifications are subject to change without notice

SPECIFICATIONS¹

Optical Performance

Lumen Output ²	800 lm / 1050 lm
CRI (Ra) ³	>90 (R9 >90)
Lumen Maintenance ⁴	50,000 hours to L70 @ 25°C T _A
Color Point Maintenance	One-step MacAdam Ellipse over product lifetime
Equivalent Traditional Lamp	75 W halogen PAR30
Dimming Range ⁵	0.1–100%

Environmental

Operating Temperature (T _A)	0–50°C
Storage Temperature	-20–80°C
Humidity	0–95%, Non-condensing
Certification	UL, cUL, RoHS, FCC Class B
Location	UL Damp Location, IP20
Outdoor Use	Not for use in outdoor applications

Mechanical

Weight	11.95 oz, 339 g
Housing Material	Powder Coated Aluminum, Polymer
Lens Material	Non-yellowing PMMA
Base Type	GU24

Electrical

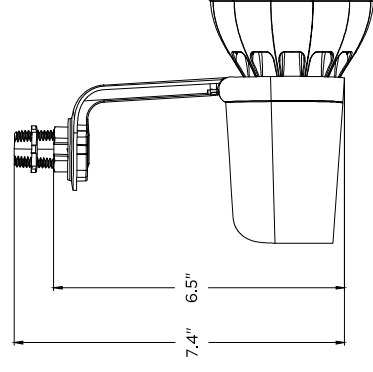
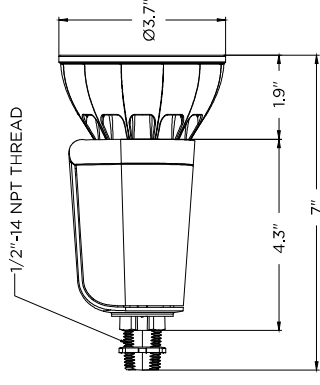
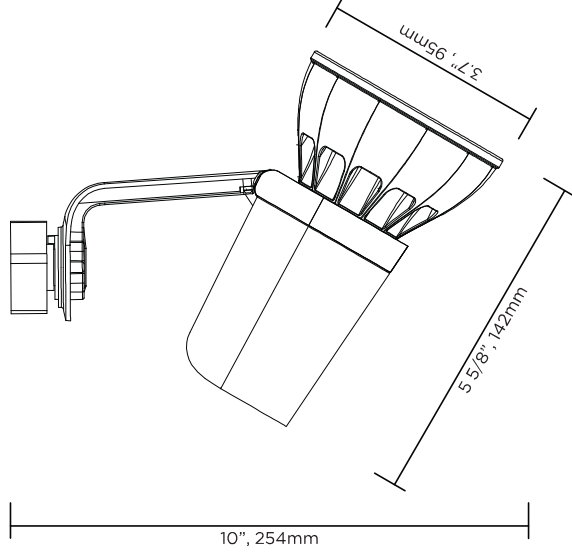
Power Consumption	S30.08 11W / S30.10 17W
Power Factor	>0.9
Current	170 mA Max
Efficacy	S30.08 75 lm/W / S30.10 62 lm/W

Emergency Lighting
Evaluated by UL[®] for use in emergency lighting systems in accordance with standard UL[®] 924 and CSA C22.2 No. 141 when paired with the LVS[™] model LUT-SHUNT-A-TD (UL[®] file E206507). See Lutron Application Note 106 (P/N 048106) at www.lutron.com for wiring details. This is only applicable to CCX fixtures used in an Athena system.

Accessories

S30 Accessory Snoot 30° cutoff, White	S30ASNT30WH
S30 Accessory Snoot 30° cutoff, Black	S30ASNT30BK
S30 Accessory Snoot 55° cutoff, White	S30ASNT55WH
S30 Accessory Snoot 55° cutoff, Black	S30ASNT55BK
S30 Accessory Louver 45° cutoff, White (Requires S30ASNT55)	S30ALUV45WH
S30 Accessory Louver 45° cutoff, Black (Requires S30ASNT55)	S30ALUV45BK
S30 Accessory Baffle 15° cutoff, White (Requires S30ASNT30)	S30ABFL15WH
S30 Accessory Baffle 15° cutoff, Black (Requires S30ASNT30)	S30ABFL15BK

- All performance measurements taken at 3000K, 25°C ambient, 100% power input, unless otherwise stated.
- Lumen measurement complies with IES LM-79-08 testing procedures.
- See color gamut chart at the end of this document.
- Lumen maintenance values calculated in accordance to TM-21 procedures based on LM-80 compliant measurement data.
- Intensity and color point control requires compatible system.

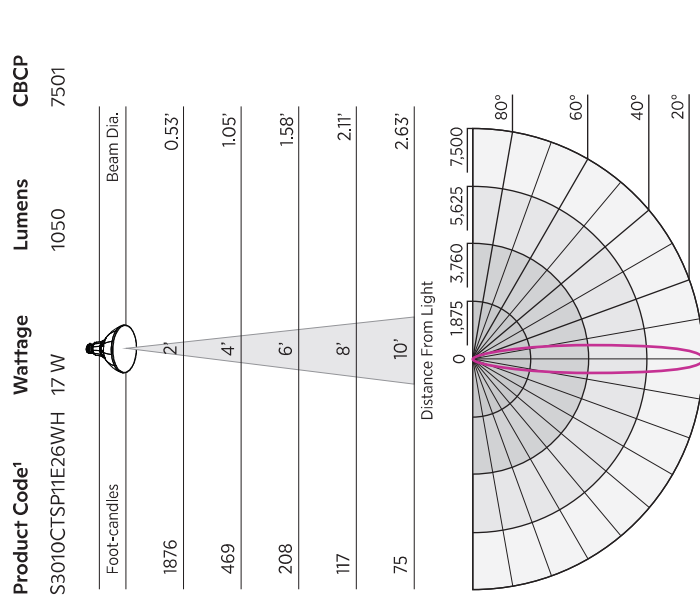


CAD files available upon request

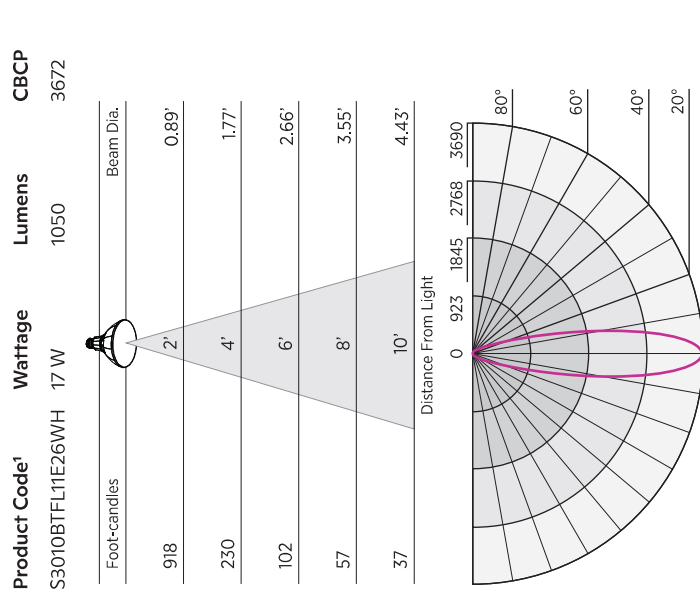


ISO FOOTCANDLE CHARTS: 2700 - 5000 K VALUES ONLY

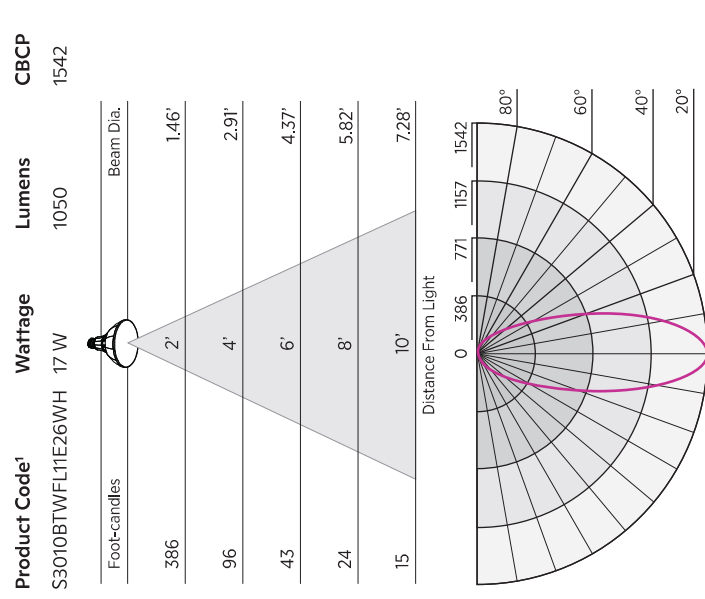
Beam Angle: 15° Spot (SP)



Beam Angle: 25° Flood (FL)



Beam Angle: 40° Wide Flood (WFL)



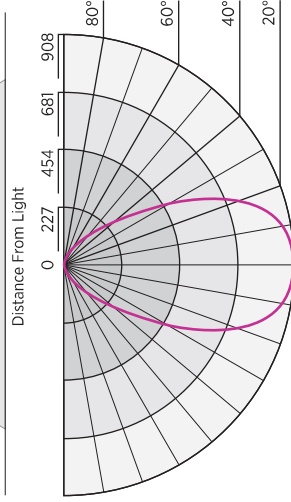
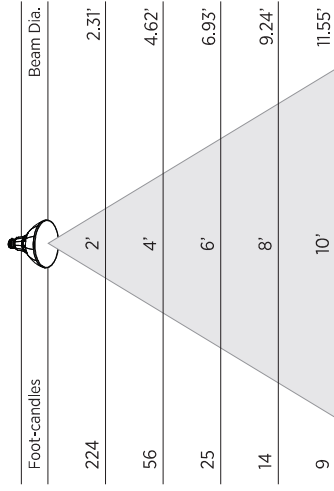
¹ This option is not available for sale in California.



ISO FOOTCANDLE CHARTS: 2700 - 5000 K VALUES ONLY

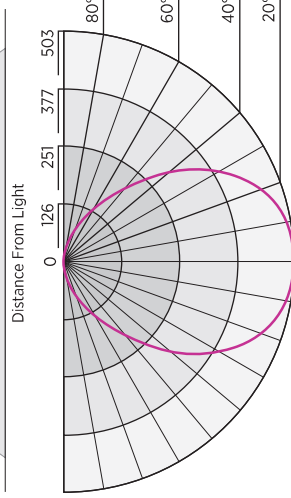
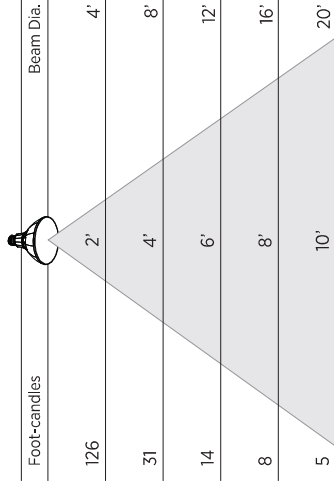
Beam Angle: 60° Very Wide Flood (VFL)

Product Code ¹	Wattage	Lumens	CBCP
S30101BTVFL11E26WH	17 W	1050	897



Beam Angle: 90° Extra Wide Flood (XFL)

Product Code ¹	Wattage	Lumens	CBCP
S30101BTXFL11E26WH	17 W	1050	503



¹ This option is not available for sale in California.

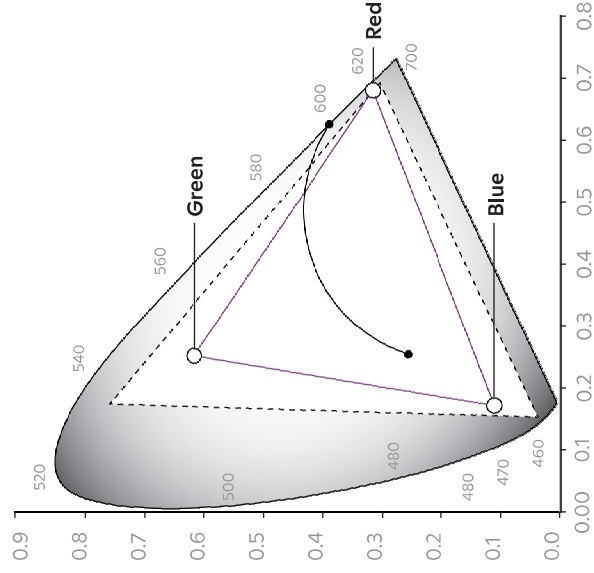


S30 TRACK LUMINAIRE

P/N 3662383 Rev I
Specifications are subject to change without notice

WIDE GAMUT

CIE 1931 Color Chart



Ketra's LED Track Luminaire can easily be commissioned into Lutron HomeWorks or Athena systems. The product can reproduce any color point within the triangle shaped gamut indicated in the chart to the left. With Ketra's innovative optical and thermal feedback system, the color point is maintained to an accuracy of one-step MacAdam Ellipse over the lifetime of the product and across operating temperature range.

— **Color Lock**—Color point is maintained to an accuracy of one-step MacAdam Ellipse over the lifetime of the product and across operating temperature range.

- - - **Expanded Gamut**—Color calibration is relaxed such that each product produces the most saturated color it is capable of.

S30 General Specifications

Color Point Maintenance: Employ closed loop optical and thermal feedback capable of maintaining color point accuracy at a one-step MacAdam ellipse over product lifetime.

Wireless Capability: LED light source shall have an integrated wireless control on board.

Color Rendering Index (CRI): Capable of CRI greater than 90 at any point along the Black Body Curve from 2,700K to 5,000K.

Single Source Multi-Dye Emitter Design: Employ a single source multi-dye emitter consisting of both monochromatic and phosphor converted blue LED dye.

LED Estimated Useful Life: Minimum of 50,000 hours at 70 percent lumen maintenance, calculated based on IES LM-80 test data.

Warranty: Ketra's light source is warranted to be free from material defects in material and workmanship for five (5) years or 25,000 hours from date of shipment, whichever is less.

Lighting System Capable of the Following Dimming Functionality:

1. Automatically mimicking natural daylight by shifting Correlated Color Temperature (CCT) and intensity based on time-of-day.
2. Shifting from high CCT at high intensity to low CCT at low intensity, mimicking dimming curve of an incandescent lamp.
3. Changing intensity while maintaining full color spectrum or CCT.
4. Changing full color spectrum or CCT while maintaining intensity.

Spectral Power Distribution Manipulation: Light system capable of manipulating the Spectral Power Distribution (SPD) by automatically adjusting distributions of color intensity while maintaining the same Correlated Color Temperature (CCT).

Dimming Range: Dimmable from 100 to 0.1 percent measured luminous flux.

Color Point Range: Single light source capable of producing 16.7 million colors and white from 1,400K to 10,000K Correlated Color Temperature (CCT).

The Ketra logo, Ketra, TruBeam, Color Lock, and KetraNet are trademarks or registered trademarks of Lutron Ketra, LLC, in the US and/or other countries. Clear Connect, Athena, and HomeWorks are trademarks or registered trademarks of Lutron Electronics Co., Inc. in the US and/or other countries. All other product names, logos, and brands are property of their respective owners.



Project: _____ Date: _____ Approval: _____

3" 18-Gauge Stainless Steel One Compartment Drop-In Gooseneck Faucet



Regency Tables & Sinks

Technical Data

Length	12 Inches
Depth	14 Inches
Height	5 Inches
Cutout Length	11 1/4 Inches
Cutout Width	13 1/4 Inches
Bowl Depth	5 Inches
Basket Drain Size	3 1/2 Inches
Bowl Front to Back	9 Inches
Bowl Left to Right	9 Inches
Drain Outlet Size	1 1/2 Inches
Edge Style	Flush
Faucet Centers	4 Inches
Features	Faucet Included NSF Listed
Flow Rate	2 GPM
Gauge	18 Gauge
Installation Type	Drop In
Material	Stainless Steel
Number of Compartments	1 Compartments
Stainless Steel Type	Type 304
Type	Drop-In Sinks

Gooseneck swing spout faucet
 Type 304 stainless steel construction
 Filters collect food debris; includes 1 1/2" IPS drain connections
 Shipping throughout the day
 Installation hardware

FINISH

DETAILS

Shipping, this Regency 9" x 9" x 5" stainless steel drop-in sink is a versatile addition to your food service kitchen. It features a durable 18 gauge, 304 series stainless steel top with a polished 18-gauge 304 series stainless steel drain basket. The sink is built to last. Plus, it comes with a 3 1/2" drain basket to conveniently catch food debris to prevent clogging the drain.

The faucet with swing spout can be moved from left to right above the sink. It comes complete with 2 handles to accept the gooseneck faucet and the hardware for installation is included. The compact design makes this sink ideal for small spaces like food trucks, concession stands, and snack bars. The raised rim prevents water from dripping onto the floor. With both hot and cold water capabilities, this drop-in sink offers a solution in a variety of settings.

⚠ WARNING: This product can expose you to chemicals including Nickel and Lead, which are known to the State of California to cause cancer, birth defects, or other reproductive harm. For more information, go to www.p65warnings.ca.gov.



Regency Tables & Sinks

ITEM# _____

PROJECT _____

DATE _____

Airpot Coffee Brewer

Features

Airpot Coffee Brewer

- Brews 3.8 to 7.5 gallons (14.4 to 28.4 litres) of perfect coffee per hour.
- Brews directly into 1.9 to 3 litre airpots.
- Convenient airpots keep coffee hot and fresh for hours.
- Airpots are easily transported to remote meeting rooms, breakfast bars, etc.
- Pourover model available (CW15-APS).
- Pourover feature included on automatic models.
- Faucet available on CWTF models only.
- Gourmet funnel model available for use with heavier throw weights of coffee.
- Digital timer enables users to make brew cycle adjustments from the front panel.
- International electrical configurations available.



Model CWTF APS with Airpot

(airpot sold separately)
 Dimensions: 23.6" H x 9" W x 18.5" D
 (59.9cm H x 22.9cm W x 47cm D)



Model CW15-APS with Airpot

(airpot sold separately)
 Dimensions: 23.6" H x 9" W x 18.5" D
 (59.9cm H x 22.9cm W x 47cm D)

For current specification sheets and other information, go to www.bunn.com.

Related Products

Easy Clear® EQ-17-TL

Product No. : 30200.1000
 Dimensions:
 12⁷/₁₆" H x 2¹/₂" W x 3" D
 31.6 cm H x 6.35 cm W x 7.62 cm D

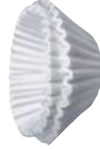


Easy Clear® ED-17-TL

Product No. : 30201.1001
 Dimensions: 8¹/₄" H x 2⁵/₁₆" Dia.
 20.95 cm H x 5.87 cm Dia.

Paper Filter Pack

Product No. : 20115.0000
 Packed per case: 1,000
 Dimensions: 4¹/₄" Base x 2³/₄" Sidewall
 10.8 cm Base x 6.98 cm Sidewall



2.2 litre Push-Button Airpot

Product No. : 28696.0002
 Capacity: 74 oz. (2.19 L)



2.5 litre Push-Button Airpot

Product No. : 13041.0001
 Capacity: 84 oz. (2.48 L)



2.5 litre Lever-Action Airpot

Product No. : 32125.0000
 Capacity: 84 oz. (2.48 L)



3.0 litre Lever-Action Airpot

Product No. : 32130.0000
 Capacity: 102 oz. (3.0 L)



Universal Airpot Racks
 for push-button and lever-action airpots.
 See page A3.9 for more information.

Gourmet C Funnel

Product No. : 34559.0000 (7.12 inch width)
 34559.0001 (7.62 inch width)
 • Universal design— handle may be moved to appropriate side
 • Allows brewing with heavier throw weights of coffee.
 • Paper Filter Pack
 Product No. : 20100.0000
 Packed per case: 1,000



Model

CW APS

CWT APS

CWTF APS

Agency Listing

UL LISTED NSF

UL LISTED NSF

UL LISTED NSF

Dimensions & Specifications

Model	Product #	Volts	Amps	Tank Heater Watts	Total Watts	Brewing Capacity	Cubic Ft.	Shipping Weight	Cord Attached
CW15-APS*	23001.0000	120	11.4	1320	1370	3.8 gal./hr.	5.0	28 lbs.	Yes†
CW15-APS***	23001.0062	120	11.4	1320	1370	3.8 gal./hr.	5.0	28 lbs.	Yes†
CWT15-APS	23001.0003	120	11.4	1320	1370	3.8 gal./hr.	5.0	29 lbs.	Yes†
CWTF15-APS**	23001.0017	120	11.4	1320	1370	3.8 gal./hr.	5.1	38 lbs.	Yes†
CWTF15-APS	23001.0006	120	11	1320	1370	3.8 gal./hr.	5.0	33 lbs.	Yes†
CWTF15-APS***	23001.0051	120	11.4	1320	1370	3.8 gal./hr.	5.2	37 lbs.	Yes†
CWTF20-APS	23001.0007	120	15.4	1800	1850	5.1 gal./hr.	5.0	32 lbs.	No
CWTF35-APS	23001.0008	120/208-240	15	3500	3550	7.5 gal./hr.	5.0	33 lbs.	No
CWTF35-APS**	23001.0023	120/208-240	15	3500	3550	7.5 gal./hr.	5.0	33 lbs.	No
CWTF35-APS***	23001.0052	120/208-240	15	3500	3550	7.5 gal./hr.	5.2	37 lbs.	No

*Pourover model. **Stainless steel funnel. ***Model has gourmet funnel. †Power cord (NEMA 5-15P) 15 Amp-120V machine only.

Brewing capacity: based upon incoming water temp of 60°F/15°C (140°F/60°C rise) per 1/2 gallon brew time of 4 minutes.

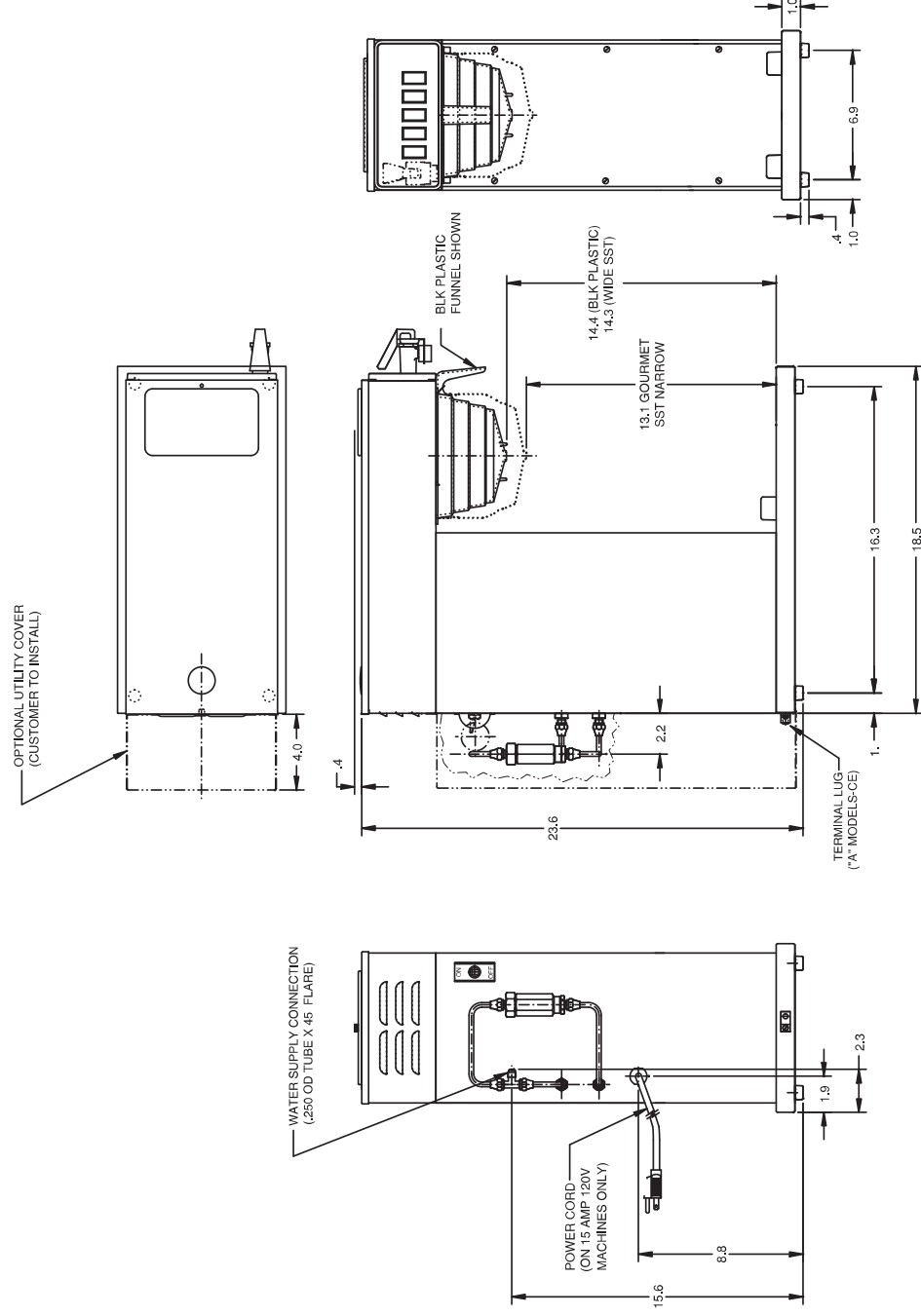
Models listed as 120/208V or 120/240V must be connected to 208V or 240V electrical service respectively. Please refer to the installation manual.

Electrical: CW15-APS, CWT15-APS & CWTF15-APS - require 2-wires plus ground service rated 120V, single phase, 60Hz.

CWTF20-APS - requires 2-wires plus ground service rated 120V, single phase, 60Hz.

CWTF35-APS and CWTF35-APS - require 3-wires plus ground service rated 120/240V, single phase, 60Hz.

Plumbing: 20-90 psi (138-621 kPa). Supplied with 1/4" (6.4 mm) male flare fitting.



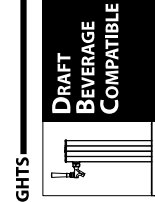
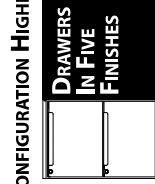
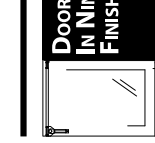


A family company manufacturing in the USA

www.glastender.com



C1FB60
with compressor
left, glass doors, and
stainless top



CONFIGURATION HIGHLIGHTS



Intertek

EP 5016978

Energy Performance
Verified / Rendement
Énergétique Vérifié



Intertek

4004503

Conforms to NSF/ANSI STD 7
and UL STD 471
Certified to CSA STD C22.2 No. 120
Listed to NSF Standard 7



Intertek

for open food as a storage refrigerator

Standard Features

- Locking door(s)
- LED interior lighting
- Heated mullion to minimize condensation
- Evaporator above compressor compartment to maximize storage capacity
- Any door opening may be converted to a drawer section or to draft dispensing
- Available without a finished top for integrated installation below customer supplied bar top
- 180° swinging door

Specifications

Electrical

- 120V, 1 phase, 60 Hz
- Full load amps - C1FB32, C1FB36 - 3.0, C1FB52, C1FB60, C1FB72, C1FB84, C1FB92, C1FB108 - 7.0
- Dedicated 15 amp circuit is required
- Includes a 6 foot NEMA 5-15P grounded cord and plug which exits the back of refrigeration compartment

Refrigeration

- R290 - 125 grams
- Compressor - C1FB32, C1FB36 - 1/8HP, C1FB52, C1FB60, C1FB72, C1FB84, C1FB92, C1FB108 - 1/4HP
- Heat rejection - C1FB32, C1FB36 - 1228 BTU/Hr, C1FB52, C1FB60, C1FB72, C1FB84, C1FB92, C1FB108 - 2867 BTU/Hr

Operating Range

- 34°F (1°C) to 40°F (4°C)



5-15P

Project: _____ AIA# _____
 Item #: _____ Qty: _____ SIS# _____
 Model #: _____

Coolers

**One Zone, Front Serviced,
Bar Profile**

C1FB32, C1FB36, C1FB52, C1FB60,
C1FB72, C1FB84, C1FB92, C1FB108

C1FB Configurable Options

Temperature:

- Beer/Food - 34°F to 40°F
- White wine - 50°F to 55°F
- Red wine - 60°F to 65°F

Refrigeration Compartment Location:

- Left or Right

Refrigeration Compartment Cover Finish:

- Black vinyl-clad
- Unlaminated
- Stainless steel
- Jeweled stainless
- Laminated

Door/Drawer Style & Finish:

- Door - Black vinyl-clad
- Door - Unlaminated
- Door - Stainless steel
- Door - Jeweled stainless
- Door - Laminated
- Door - Glass, black vinyl-clad
- Door - Glass, stainless steel
- Door - Glass, jeweled stainless
- Door - Glass, laminated
- Drawers - Black vinyl-clad
- Drawers - Unlaminated
- Drawers - Stainless steel
- Drawers - Jeweled stainless
- Drawers - Laminated

Door Hinge Location (specify for each door):

- Left or Right

See page 3 of this spec for a complete list of cooler accessories.

Shelving (specify per door section):

- Three adjustable shelves
- Keg rack
- Pull-out wine shelves:
 - » w/combinaton upright and horizontal storage
 - » w/upright storage
 - » w/horizontal storage (Note: not available for the door next to the compressor compartment.)

Door Handle:

(Note: drawers come with a stainless pull tab handle)

- Polished stainless
- Polished brass
- Stainless pull tab

Top Style:

- No finished top
- Stainless top
- Laminated top

Left and Right Side Finish:

- Black vinyl-clad
- Stainless steel
- Laminated

Back Finish:

- Galvanized steel
- Stainless steel

LED Lighting Style:

- Bright white (7,000k)
- Warm white (3,500k)
- Amber (2,700k)
- Blue

Plumbing

- Automatic condensate evaporator. No drain connection required.

Shelving

- Three adjustable coated shelves per door included (does not include sections with drawers or pull-out wine shelves)

Materials

- Two to six pull-out wine shelves per door optional
- Stainless steel parts include: exterior sub-top, interior, front of cabinet, hinges, hinge and lock brackets, and optional legs
- Black vinyl-clad steel parts include: standard sides, doors and compressor cover
- Galvanized steel parts include: back and bottom
- Zinc plated CR steel parts include: leg sockets

Weight Bearing Capacity

- Counter tops and other accessories should not exceed 500 pounds per door

Glastender, Inc. • 5400 N Michigan Rd • Saginaw, MI • 48604-9780
 989.752.4275 • 800.748.0423 • Fax 989.752.4444

www.glastender.com

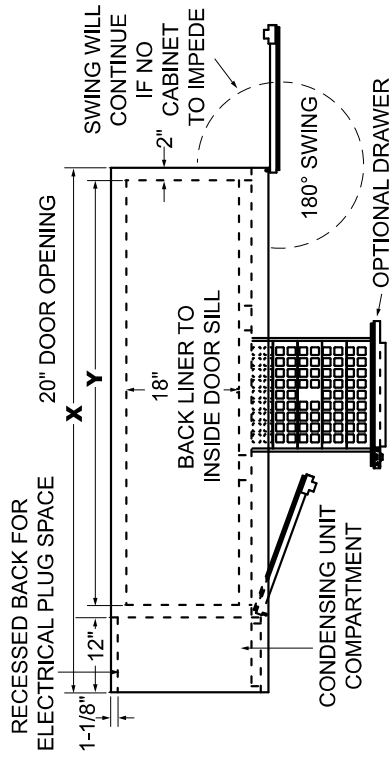
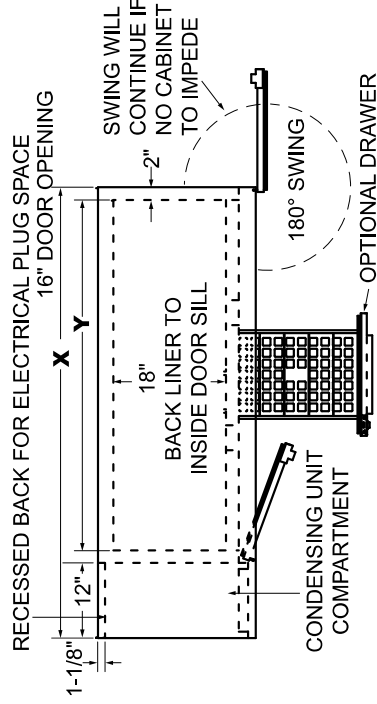
Approval/Notes:

Specifications subject to change without notice. For current specifications please visit our website.

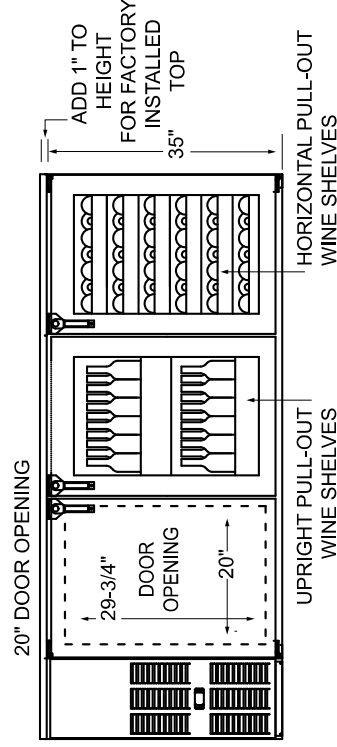
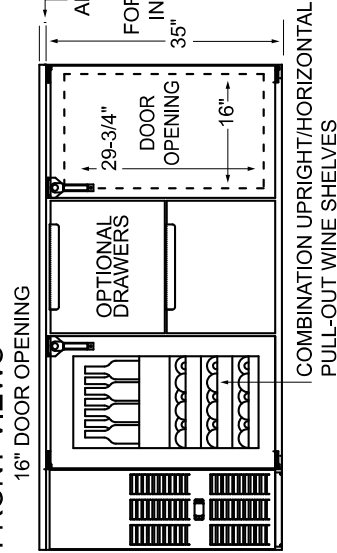
Coolers - One Zone, Front Serviced, Bar Profile

Dimensional Information

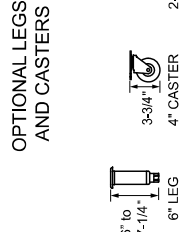
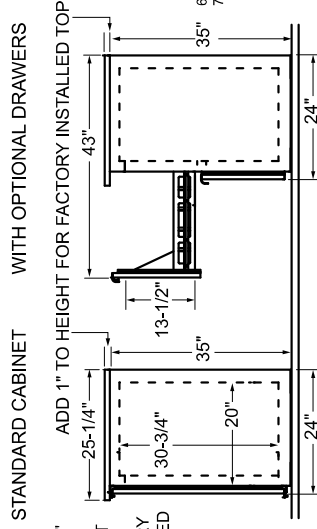
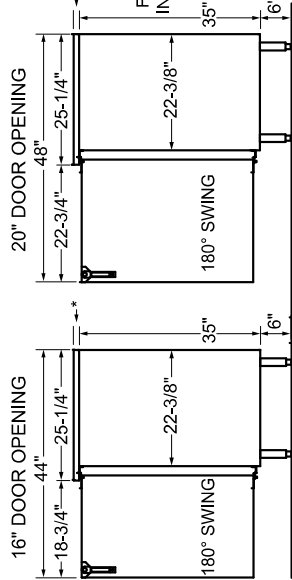
PLAN VIEWS



FRONT VIEWS



SIDE VIEWS



MODELS SHOWN WITH OPTIONAL 6" LEGS

Note: Available with compressor left or right. Compressor left model shown. *Wine bottle capacity is based on adjustable shelves. Drawers will hold less.

16" Door Opening Models	Capacities					
	12 oz. bottles, cases	750ml wine bottles *				
C1FB32	32"	16"	1	57	N/A	2
C1FB52	52"	36"	2	116	N/A	7
C1FB72	72"	56"	3	188	N/A	11
C1FB92	92"	76"	4	260	N/A	15

20" Door Opening Models	Capacities					
	12 oz. bottles, cases	750ml wine bottles *				
C1FB36	36"	20"	1	70	1	4
C1FB60	60"	44"	2	164	2	8
C1FB84	84"	68"	3	248	4	14
C1FB108	108"	92"	4	332	5	18

Configuring Bar Profile Coolers for Draft Beverage Dispensing

All Glastender bar profile coolers can be configured for draft beverage dispensing. Please note that a minimum 17" wide door opening is required for full size (i.e., 16" diameter) 1/2 barrel kegs. Refer to the capacity statements in the Product Directory or Specification Sheet for the sizes and quantities of kegs each unit will hold.

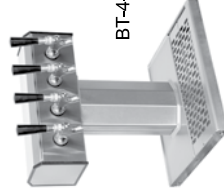
Direct Draw Draft Beverage Towers

Glastender Beverage Towers come standard with the stainless steel faucets and shanks necessary to dispense keg beer, wine, soda, coffee, or cocktails. See individual spec pages for complete information.



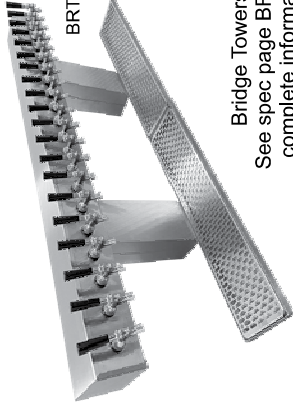
CT-3-SS

Column Towers
See spec page CT for complete information



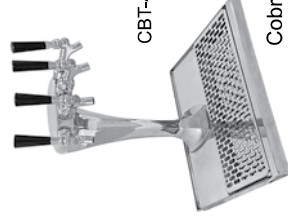
BT-4-SS

Tee Towers
See spec page BT for complete information



BRT-20-SSR

Bridge Towers
See spec page BRT for complete information



CBT-4-MF

Cobra Towers
See spec page CBT for complete information

Look for the Draft Beer Compatible logo

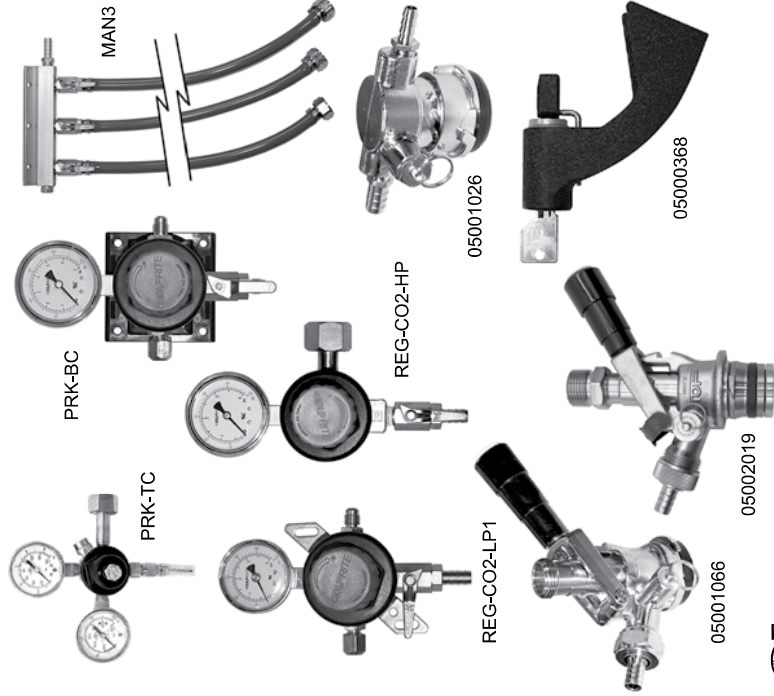


Tower Cooling Kits

Direct draw beverage towers are chilled by air from inside the host cooler. This is especially important for draft beer, as warm faucets cause the beer to foam.

TOWER COOLING KITS

MODEL	DESCRIPTION	WGt
TCK12-1	For 1 & 2-door coolers w/ one tower column	3#
TCK12-2	For 3 & 4-door coolers w/ two tower columns	6#
TCK34-1	For 3 & 4-door coolers w/ one tower column	8#
TCK34-2	For 3 & 4-door coolers w/ two tower columns	11#



PRIMARY REGULATOR KITS

Primary regulators are used to step down the CO₂ or nitrogen pressure from the main source. A tank mount CO₂ primary regulator attaches directly to the CO₂ tank. A bulk or in-line CO₂ primary regulator is used to splice into a CO₂ line when the CO₂ tank is shared by more than one system. A tank mount nitrogen primary regulator is used with pre-blended nitrogen and CO₂ or pure nitrogen gas. Each primary regulator kit includes 50 feet of nylon braided hose.

MODEL	DESCRIPTION	WGt
PRK-TC	Tank mount CO ₂ primary regulator kit	15#
PRK-BC	Bulk CO ₂ primary regulator kit	15#
PRK-TN	Tank mount nitrogen primary regulator kit	15#

SECONDARY REGULATOR KITS

The REG-CO2-LP1 secondary regulator kit is normally mounted inside the direct draw cooler and connects to the gas line coming from the externally mounted primary regulator. For installations with more than one keg on tap, also order the appropriate manifold kit(s). When no external source of CO₂ is available, a 5 pound CO₂ cylinder may be stored inside the cooler, which will require the REG-CO2-HP regulator. A manifold kit will also be required if there is more than one keg on tap.

MODEL	DESCRIPTION	WGt
REG-CO2-LP1	Secondary regulator kit	7#
REG-CO2-HP	Primary regulator kit for use with 5# CO ₂ tank	7#

MAN2	Two product manifold kit	2#
MAN3	Three product manifold kit	3#
MAN4	Four product manifold kit	4#
MAN5	Five product manifold kit	5#
MAN6	Six product manifold kit	6#

ADDITIONAL ACCESSORIES

MODEL	DESCRIPTION	WGt
03004240	1/2" ID black drain line, per foot	N/A
05000400	5/16" ID red vinyl air line, per foot	N/A
05000386	1/4" ID nylon braided air line, per foot	N/A
05001066	Sanke keg tap, stainless steel probe	2#
05001026	Sanke keg tap, low profile	2#
05002019	U system keg coupler w/ss probe for Guinness and Harp	2#
05000368	Lock for beer faucet	2#
05000636	5# CO ₂ tank (unfilled)	15#
LCK	Line cleaning kit	
06007084	Drain bottle	



Regency 18" x 30" Underbar Ice Bin - 98 lb.

#6001B1830

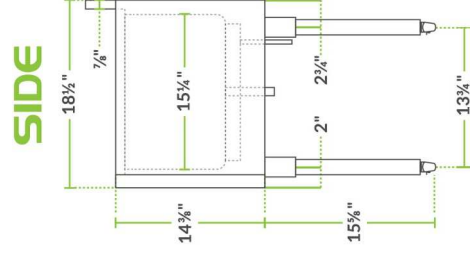
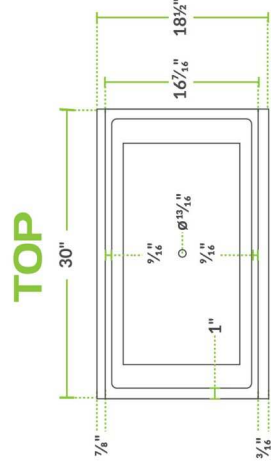
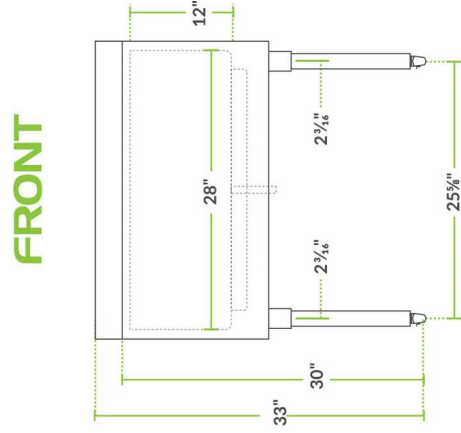


Technical Data

Length	30 Inches
Width	18 1/2 Inches
Height	33 Inches
Ice Bin Length	28 Inches
Ice Bin Width	15 1/4 Inches
Ice Bin Depth	12 Inches
Backsplash Height	3 Inches
Work Surface Height	30 Inches
Backsplash	With Backsplash
Capacity	98 lb.
Color	Silver
Features	Bottle Storage NSF Listed
Installation Type	Freestanding
Leg Construction	Galvanized Steel
Material	Stainless Steel
Type	Ice Bins Without Cold Plate

Stainless steel bin; 98 lb. capacity
 Steel legs and adjustable plastic bullet feet provide stability
 Polyurethane foam
 Bottle holders and a 3" backsplash limits messes
 Equipped with 1 1/4" connection and 3" tailpiece

Options



Notes & Details

Keep ice right where you need it, when you need it with this Regency 18" x 30" 98 lb. ice bin. Its compact size makes it perfect for use at your bar, pub, club, or restaurant. Featuring a 20-gauge type 304 stainless steel design, it is extremely durable and easy to clean. It rests atop galvanized steel legs and adjustable plastic bullet feet for ultimate stability.

To keep your bar protected from potential water damage, this ice bin is built with a 3" backsplash. The poly foam insulation helps keep this ice bin's contents cool, saving you money by wasting less ice. As an added bonus, it includes two plastic bottle holders with removable dividers to keep your drinks or mixers nice and cold throughout your busy shifts.

WARNING: This product can expose you to chemicals including Nickel and Lead, which are known to the State of California to cause cancer, birth defects, or other reproductive harm. For more information, go to www.p65warnings.ca.gov.



Regency Tables & Sinks

Project: _____ Date: _____ Approval: _____

Underbar Sink with Left Drainboard and Faucet - 36" x 21"

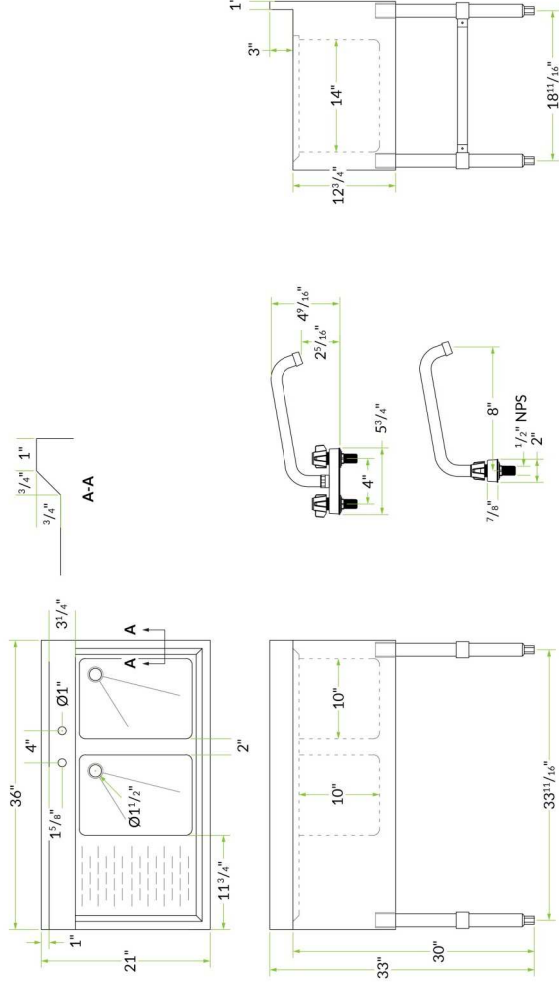


Technical Data

Length	36 Inches
Width	21 Inches
Height	33 Inches
Drainboard Length	11 3/4 Inches
Bowl Depth	10 Inches
Backsplash Height	3 Inches
Work Surface Height	30 Inches
Backsplash	With Backsplash
Bowl Front to Back	14 Inches
Bowl Left to Right	10 Inches
Faucet Centers	4 Inches
Features	Faucet Included NSF Listed
Flow Rate	2 GPM
Gauge	18 Gauge
Leg Construction	Galvanized Steel
Material	Stainless Steel
Number of Bowls	2 Bowls
Number of Compartments	2 Compartments
Number of Drainboards	1 Drainboards
Stainless Steel Type	Type 304
Type	Bar Sinks

...unt swing faucet
...with drain basket included
...nodate tall glasses and pitchers
...esses and the drainboard aids in fast drying
...centers accommodate deck-mounted faucet

15



Notes & Details

This 2-bowl underbar sink with faucet comes standard with one 11 3/4" left drainboard for efficient washing and drying of your barware. The two deep, 10" sink bowls accommodate all types of glasses, including pitchers and tall glasses. As an added convenience, it features a 3" high backsplash to keep your bar better protected. This 2-bowl underbar sink has holes punched on 4" centers to accept the included 8" swivel faucet with swing nozzle.

This sink offers a durable 18-gauge type 304 stainless steel construction along its top, bowl, and back, in addition to a 20-gauge type 304 stainless steel apron. For maximum stability, it has 16-gauge galvanized steel legs with plastic bullet feet.

⚠ WARNING: This product can expose you to chemicals including lead, which are known to the State of California to cause cancer, birth defects, or other reproductive harm. For more information, go to www.p65warnings.ca.gov.

NOBLE WAREWASHING

Project _____
 Item _____
 Quantity _____
 CSI Section 11.400 _____
 Approval _____
 Date _____

NOBLE UH30-FND



Standard Features

- Automatic tank fill
- Push button start
- Fill and Dump design
- Built-in booster heater with Sani-Sure™ final rinse system
- Labyrinth type door design
- Automatic pumped drain for floor and wall drain installations
- Stainless steel wash pump
- Solid state controls
- Delimiting cycle
- Simplified controls allow easy access for operation and service
- Door switch
- One (1) each peg and combination rack included
- Above water scrap basket
- Built-in chemical pumps and priming switches

Mandatory Specs

Specify voltage _____

Options

- Water Hammer Arrestor
- Pressure Regulator
- Back Panel
- Drain Water Tempering Kit
- Scale Prevention System (SPS)
- Replacement Cartridge for SPS
- Casters (adds 3/4" to height)
- Tie Down

Accessories

- 36-Compartment Rack
- 4 1/8" tall (105 mm)
- 5 5/8" tall (143 mm)
- 7" tall (178 mm)
- Combination Rack
- Peg Rack
- Machine Stand
- 6" (152 mm) high
- 18" (457 mm) high

Specifications

- Uses 1.1 gallons (4.2 liters) of water per rack
- Cleans 30 (24)* racks per hour
- Two-minute automatic cycle
- Powerful 1 hp wash pump motor
- Fresh water rinse eliminates wash water contamination
- Air insulated between body and stainless steel housing
- Durable stainless steel construction

Notes:

A vent hood is not recommended above the NOBLE UH30-FND as it does not produce excessive vapors. Always check with the local building code to know what type of ventilation is required for commercial dish machine installations in your area.

Normal operation of the UH30-FND generates steam that may escape from the door. Materials such as wood laminate, veneers, etc. are unsuitable for use in areas exposed to dishwasher steam and detergents. Stainless steel or other moisture-resistant shields are recommended for surfaces adjacent to UH30-FND sides and top.



Intertek



Intertek

*Racks per hour calculated with NSF suggested load time of thirty (30) seconds for front opening type

NOBLE UH30-FND

FRONT
24 1/4 [615 mm]
14 1/4 [362 mm]
33 5/16 [846 mm]
CLEARANCE

TOP
41 3/4 [1061 mm]
2 3/4 [70 mm]
2 1/8 [54 mm]
1/4 [7 mm]
25 [635 mm]
16 3/4 [426 mm]
DOOR OPEN

BACK
10 1/2 [267 mm]
1 5/8 [41 mm] ≤ 24 [610 mm]
1 7/8 [48 mm]
1 5/8 [39 mm]
8 5/8 [220 mm]
3 [76 mm]
C

LEGEND:
A - Electrical Connection
B - Water Inlet (with 5' Hose) (3/4" Male GHT, connect to true 1/2" ID line, MIN 110 °F)
C - Drain Hose (1" ID, install into 1-1/2" MIN Drain with Air-gap)

Do NOT install Drain Hose to "bottom" of Floor Drain or Sink. This can cause splashback.

Install Machine Drain Hose into 1 1/2 [38 mm] MIN Floor Drain or Sink

Do NOT install Drain Hose to "bottom" of Floor Drain or Sink. This can cause splashback.

*All dimensions from the floor can be increased 1" using the machine's adjustable feet.
Optional casters add 3/4" to height of unit.*

MODEL NO.	MACHINE DIMENSIONS			WALL CLEARANCE	SHIPPING INFORMATION					
	INSIDE CLEARANCE HEIGHT	INSIDE CLEARANCE WIDTH	INSIDE CLEARANCE DEPTH		WEIGHT	CLASS	CUBE	HEIGHT	WIDTH	DEPTH
NOBLE UH30-FND	14-1/2" (368 mm)	20" (508 mm)	20" (508 mm)	1/4" (6 mm)	242 lbs (110 kg)	85	20.09 cu. ft.	43.5" (1105 mm)	28" (712 mm)	28.5" (724 mm)

OPERATING CAPACITY - Normal Cycle	
Racks per Hour	30 (24)*
Dishes per Hour	750
Glasses per Hour	1,080

OPERATING CYCLE	
Wash Cycle (seconds)	82
Drain Time (seconds)	28
Rinse Cycle (seconds)	10
Total Cycle (seconds)	120

ELECTRICAL REQUIREMENTS			
Power Supply	Total Load	Minimum Circuit Ampacity	Maximum Overcurrent Protection
208/60/1	37.2 A	38.5 A	40 A
230/60/1	40.7 A	41.9 A	45 A

OPERATING TEMPERATURES	
Wash	150° F (65.6° C)
Rinse	180° F (82.2° C)

WASH PUMP MOTOR	
Wash Pump	1 hp

WATER REQUIREMENTS	
Incoming Water Temperature (min)	110 °F (43.3 °C)
Gallons per Rack	1.1 gal (4.2 L)
Gallons per Hour	33.0 gal (124.92 L)
Gallons per Hour**	26.4 gal (99.93 L)
Flow Pressure (PSI)	20 ± 5
Waterline Size (NPT)	3/4" Male GHT (connect to true 1/2" ID line)
Drainline Size (ID)	1"

HOW TO SPECIFY: NOBLE UH30-FND

*Racks per hour calculated with NSF suggested load time of thirty (30) seconds for front opening types
**Gallons per hour calculated with NSF suggested load time of thirty (30) seconds for front opening types