

Place Pigalle

Window Replacement Proposal

Raven's Nest MHC Application

Overview

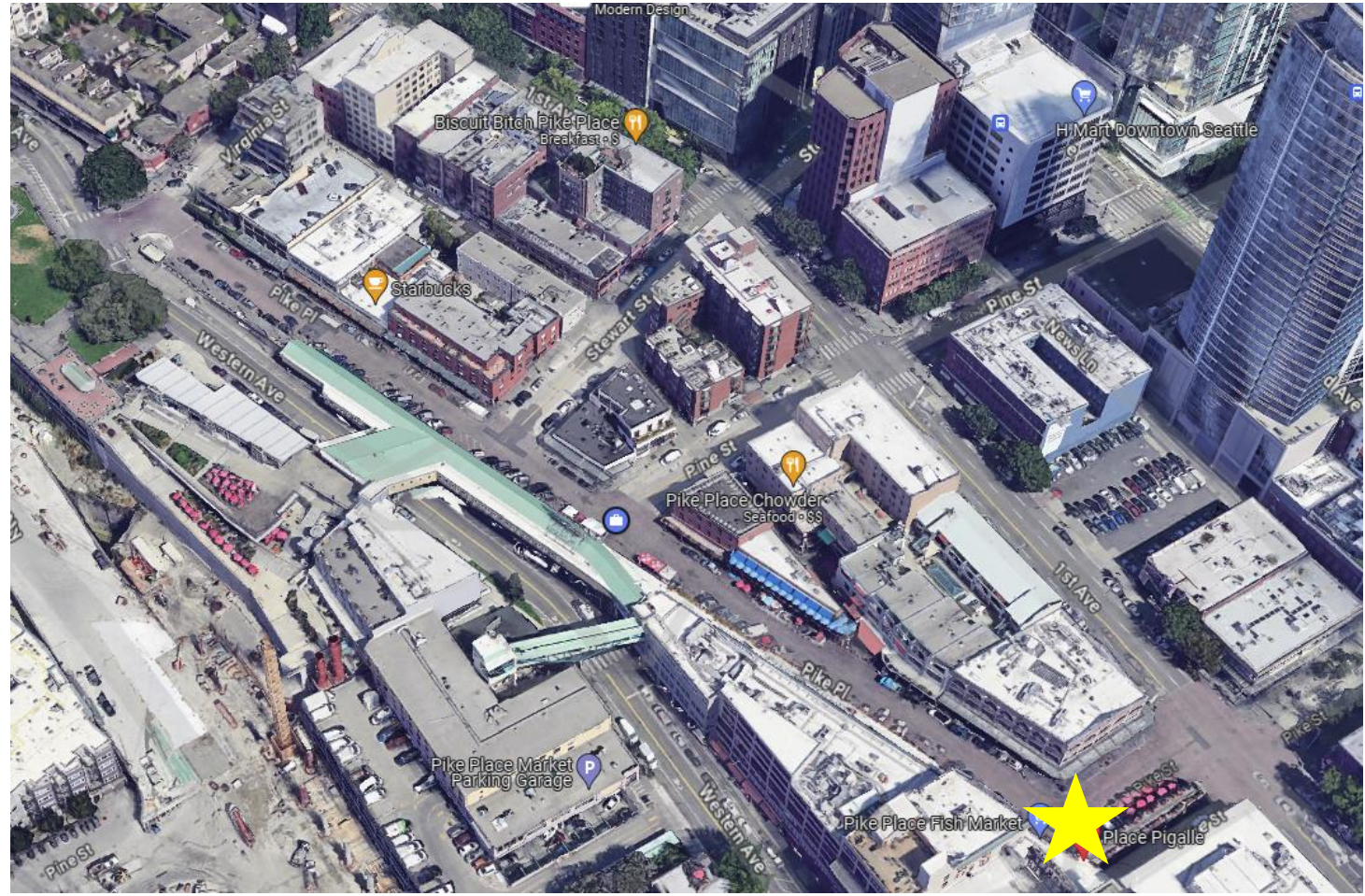
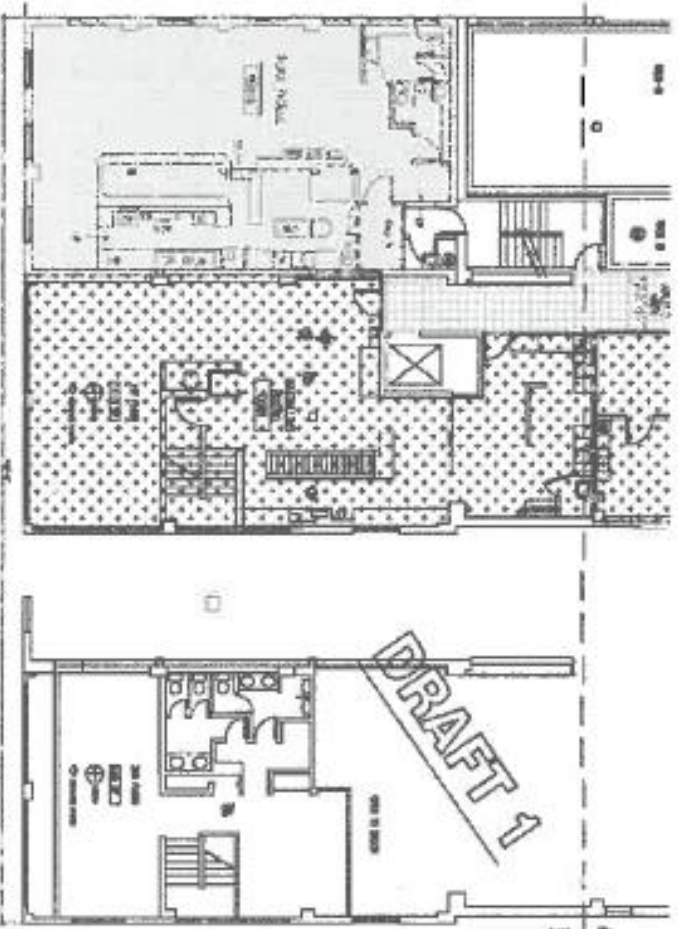
- We propose the replacement of four wooden windows (including interior and exterior trim) in Place Pigalle.
- Windows are in disrepair, not safe to operate and currently leak into the restaurant.
- Currently there are two styles of windows in Place Pigalle. We are proposing to replace the damaged windows with one style so all windows match.

Project Timing:

- As soon as approved. We expect the removal of the dry-wall to take one day, done after Market hours. Restoration of the wall will likely take a few weeks but not disrupt business operations.

Site Plan

SPACE PLAN AND LOCATION



Exterior View North Side

Photo showing the exterior north wall of
Place Pigalle

The far window pictured will be replaced



Exterior View West Side

Photo showing the exterior west wall of
Place Pigalle

The three windows pictured will be replaced



Interior View - West

Photo showing the interior west windows. All three existing casement windows be replaced.

New windows will be custom made to match the horizontal window style so that all windows in restaurant will be the same style



Interior View - North

Photo showing the interior north windows. The back casement style window will be replaced.

New windows will be custom made to match the horizontal window style so that all windows in restaurant will be the same style



Detailed – North View

All windows are the same dimensions -

Windows and Frame: 61" tall x 52" wide

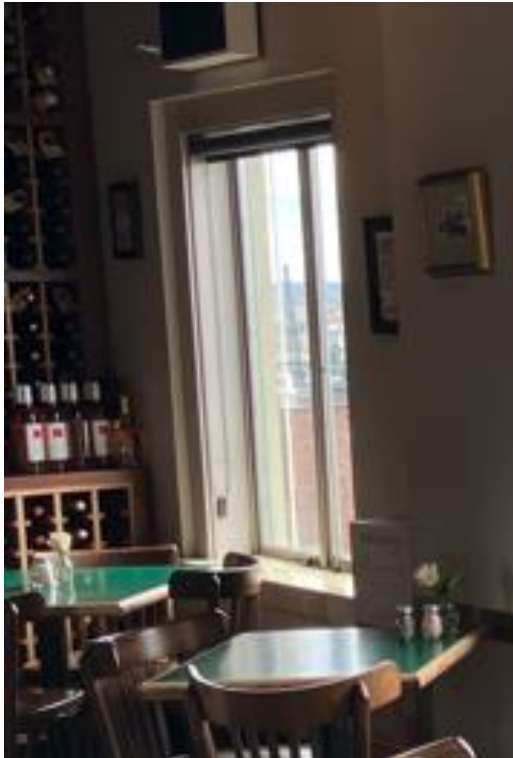
Windows Only: 56" tall x 46" wide

All are Casement style windows that open out



Detailed - West View

Left Side Window



Middle Window



Right Side Window



New Window Design

The new windows will be custom made to match the existing horizontal windows

Windows will slide up to open

All replacement materials will be custom fabricated wood

New windows will be same dimensions as existing

Windows and Frame: 61" tall x 52" wide

Windows Only: 56" tall x 46" wide



Interior Trim and Hardware Detail Existing

Contractor will take extra measures to salvage the interior trim where possible in order to maintain the existing esthetic.



Interior Trim and Hardware Detail Proposed

Contractor will take extra measures to salvage the interior trim where possible in order to maintain the existing esthetic.

New hardware will be exact match of existing for horizontal windows



Exterior Trim Detail

Contractor will take extra measures to salvage the exterior trim where possible in order to maintain the existing esthetic.

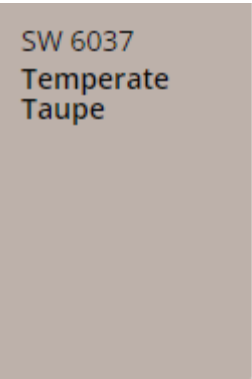


Interior and Exterior Paint Colors

Interior: SW 6037 Temperate
Taupe <https://www.sherwin-williams.com/en-us/color/color-family/purple-paint-colors/sw6037-temperate-taupe>

Exterior: SW 9130 Evergreen
Fog <https://www.sherwin-williams.com/en-us/color/color-family/green-paint-colors/sw9130-evergreen-fog>

SW 6037
Temperate
Taupe



SW 9130
Evergreen
Fog

