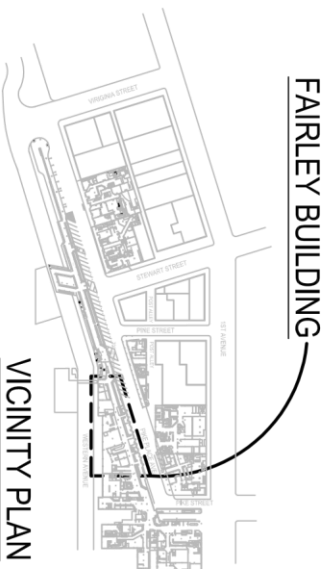
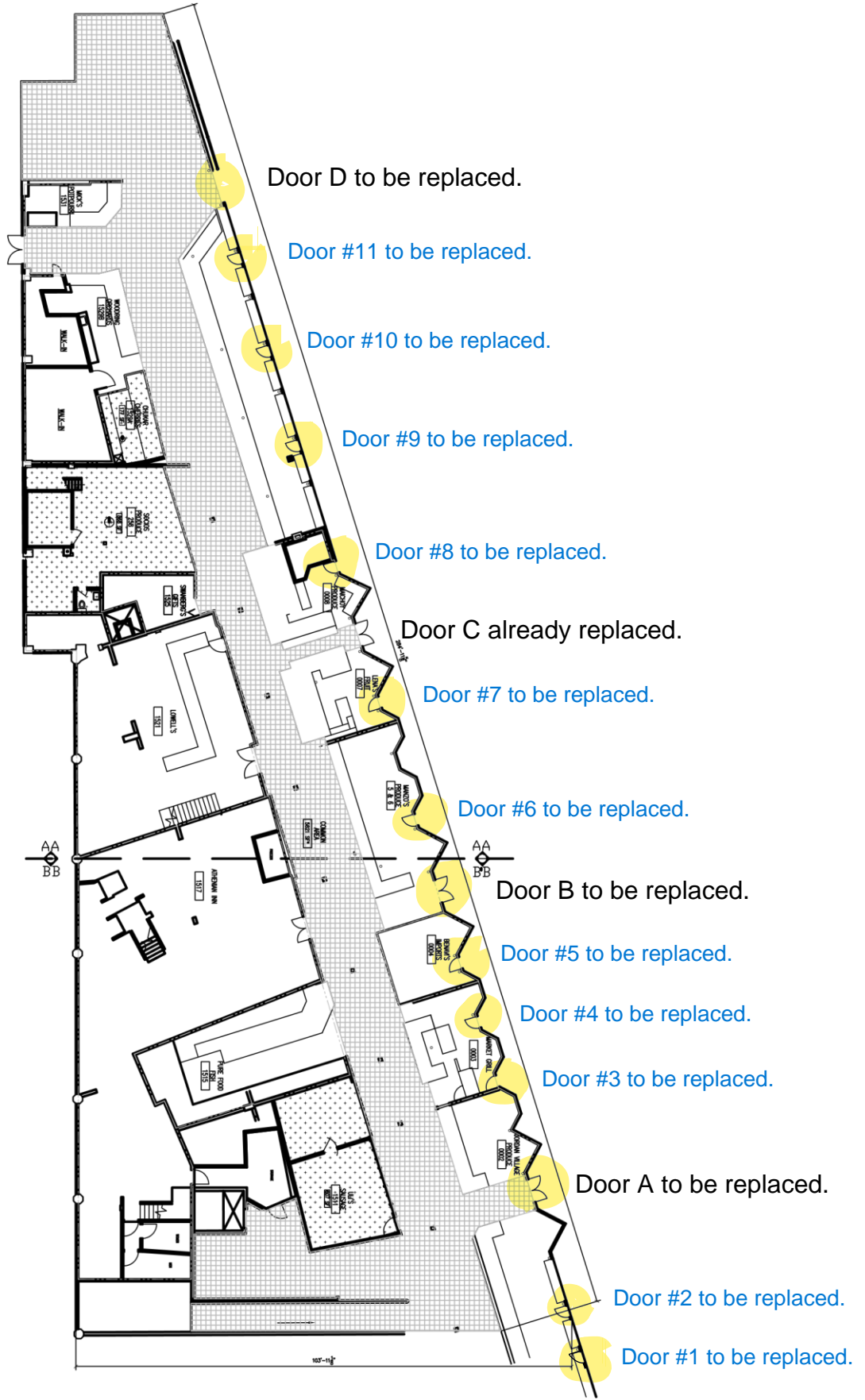




*Attachment 5: Adjacent street and buildings*



FAIRLEY BUILDING TENANTS	
ARCADE LEVEL (18,313 SF)	
0002 - JORDAN VILLAGE PRODUCE	
0003 - MARKET GRILL	
0004 - BENAIVIS PRODUCE	
0006 - MANZOS PRODUCE	
0007 - LINA'S FRUIT	
0008 - MATCHOY PRODUCE	
1511 - LIU'S SAUSAGE	(607 SF)
1515 - PURE FISH FOOD	
1517 - ATHENIAN INN	
1521 - LOWELLS	
1525 - SWANBERG GIFTS	
1529A - CHUKAR CHERRIES	(177 SF)
1529B - WOODRING CHERRIES	
1531 - MICK'S POTPOURRI	
258 - SOCIOS PRODUCE	(888 SF)

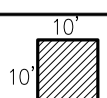
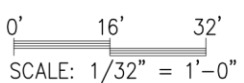
HATCHED AREAS DENOTE COMMON AREAS (NOT FIELD VERIFIED)  
 HATCHED AREAS DENOTE TENANT SPACES THAT HAVE BEEN FIELD VERIFIED

NOTE: (\*) SQUARE FOOTAGE NOT FIELD VERIFIED

**DRAFT 1**

**FAIRLEY BUILDING - ARCADE LEVEL 11x17 FLOOR VIEW**

LAST UPDATE: 9-17-03  
ACAD BASE: DA FAR 0



PLACE MARKET



## **Door 1**

**Existing Door Material: Wood**

**Proposed Door Material: Hollow Metal**

**Note: The color and finishes will be similar to existing door.**



## **Door 2**

**Existing Door Material: Wood**

**Proposed Door Material: Hollow Metal**

**Note: The color and finishes will be similar to existing door.**



### **Door 3**

**Existing Door Material: Wood**

**Proposed Door Material: Hollow Metal**

**Note: The color and finishes will be similar to existing door.**



## **Door 4**

**Existing Door Material: Wood**

**Proposed Door Material: Hollow Metal**

**Note: The color and finishes will be similar to existing door.**



## **Door 5**

**Existing Door Material: Wood**

**Proposed Door Material: Hollow Metal**

**Note: The color and finishes will be similar to existing door.**



## **Door 6**

**Existing Door Material: Wood**

**Proposed Door Material: Hollow Metal**

**Note: The color and finishes will be similar to existing door.**





## **Door 7**

**Existing Door Material: Wood**

**Proposed Door Material: Hollow Metal**

**Note: The color and finishes will be similar to existing door.**



## Door 8

**Existing Door Material: Wood**

**Proposed Door Material: Hollow Metal**

**Note: The color and finishes will be similar to existing door.**



## **Door 9**

**Existing Door Material: Wood**

**Proposed Door Material: Hollow Metal**

**Note: The color and finishes will be similar to existing door.**



## **Door 10**

**Existing Door Material: Wood**

**Proposed Door Material: Hollow Metal**

**Note: The color and finishes will be similar to existing door.**



## **Door 11**

**Existing Door Material: Wood**

**Proposed Door Material: Hollow Metal**

**Note: The color and finishes will be similar to existing door.**



## **Door A**

**Existing Door Material: Wood**

**Proposed Door Material: Hollow Metal**

**Note: The color and finishes will be similar to existing door.**



## **Door B**

**Existing Door Material: Wood**

**Proposed Door Material: Hollow Metal**

**Note: The color and finishes will be similar to existing door.**



## **Door D**

**Existing Door Material: Wood**

**Proposed Door Material: Hollow Metal**

**Note: The color and finishes will be similar to existing door.**





*Attachment 3: Proposed Metal Door*

*Note: We confirm that color, glass, hardware and door jamb will be similar to existing door.*



2'-4"

8"

**NOTICE**  
DO NOT  
BLOCK DOOR

2'-8"

6'-7"

7"

1'-11"

10"

4"

1'-7"

5"