

Pike Place Market Waste Receptacle Replacement

Submitted by
David Bradley, PDA Facilities Manager
Katie Trent, PDA COO



Background

- The PDA is requesting approval to replace existing garbage and recycling waste bins with new units that:
 - Offer a cohesive receptacle spec across the Historic District
 - Enhance capacity in most cases
 - Improve the aesthetics of waste receptacles
 - Deter individuals and animals from rooting through waste bins and creating messes and pest attractions
- The existing array of waste bins was collected over time, with a variety of models in use across the District, complicating operations with different tools and bag specs required depending on the receptacle
- MHC guideline 3.8.1 states that “Litter receptacles of uniform design should be provided throughout the District”



Specifications



Garbage Can

- 35-gallon capacity
- Manufactured by Securr
- Galvanized steel construction
- Handles, striker plates and hardware zinc coated for corrosion resistance
- Finished with textured powder coat, resistant to humidity, salt spray, fog, abrasion and chemicals
- 51" H x 23" W x 27" L

Labels

Vinyl letter application on two sides in Sanchez font (pictured): "GARBAGE"

Public Market Center logo orients visitor to historic district

Color

Powder coated in Fir Green
Hex #1D2D20

Specifications



Recycling Can

- 35-gallon capacity
- Manufactured by Securr
- Galvanized steel construction
- Handles, striker plates and hardware zinc coated for corrosion resistance
- Finished with textured powder coat, resistant to humidity, salt spray, fog, abrasion and chemicals
- 51" H x 23" W x 27" L

Labels

Vinyl letter application on two sides in Sanchez font (pictured): "MIXED RECYCLING"
Public Market Center logo orients visitor to historic district



Color

Powder coated in Fir Green
Hex #1D2D20

Specifications



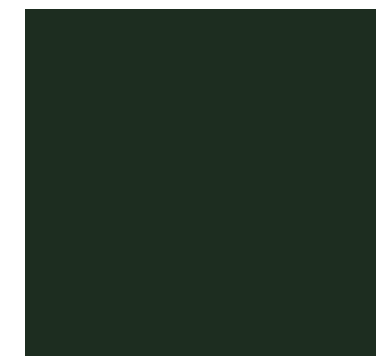
Compost Can

- 35-gallon capacity
- Manufactured by Securr
- Galvanized steel construction
- Handles, striker plates and hardware zinc coated for corrosion resistance
- Finished with textured powder coat, resistant to humidity, salt spray, fog, abrasion and chemicals
- 51" H x 23" W x 27" L

Labels

Vinyl letter application on two sides in Sanchez font (pictured): "COMPOST"

Public Market Center logo orients visitor to historic district



Color

Powder coated in Fir Green
Hex #1D2D20

Specifications



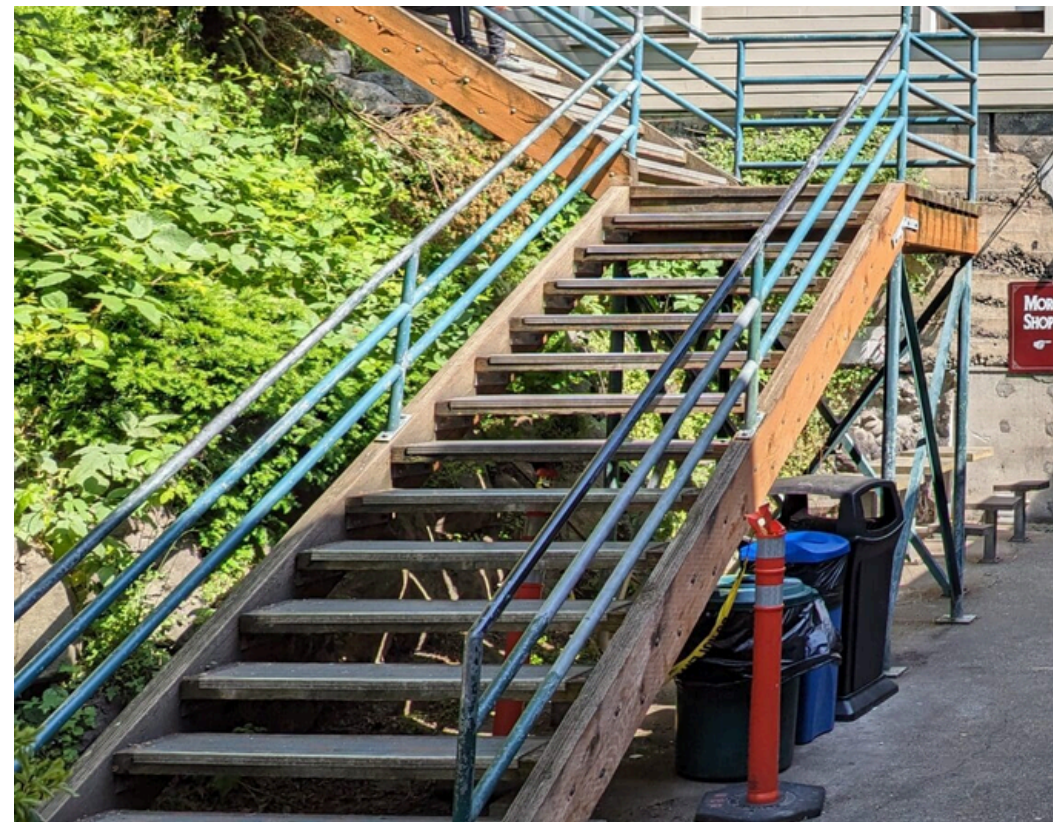
Market
Front

Garbage + Compost + Recycling Cans

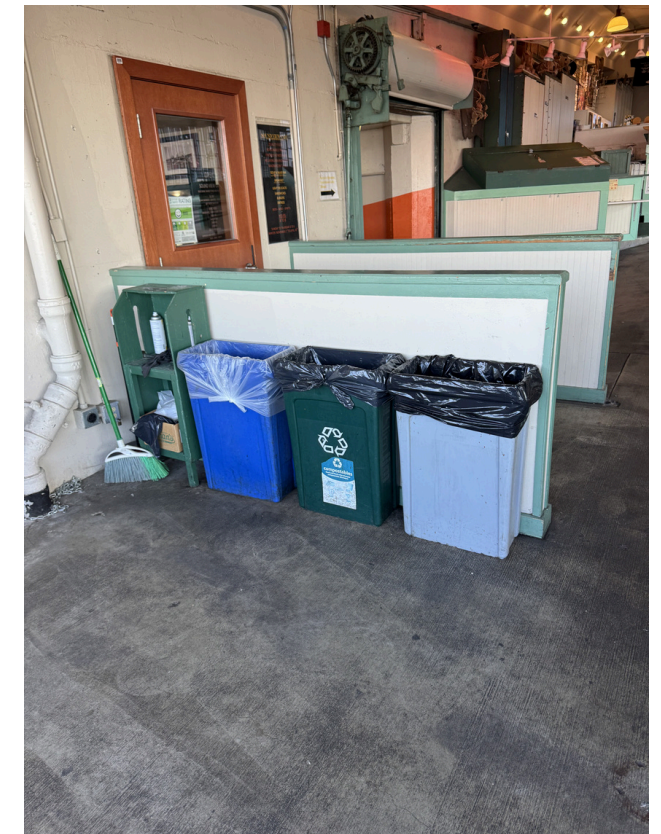
- Propose replacing existing plastic can combos in Flower Row and Soames Dunn Courtyard and 3-way units at Post Alley and Market Front
- Unifies waste receptacle presentation across the Market and adds critical compost option in area of highest food consumption



Post
Alley



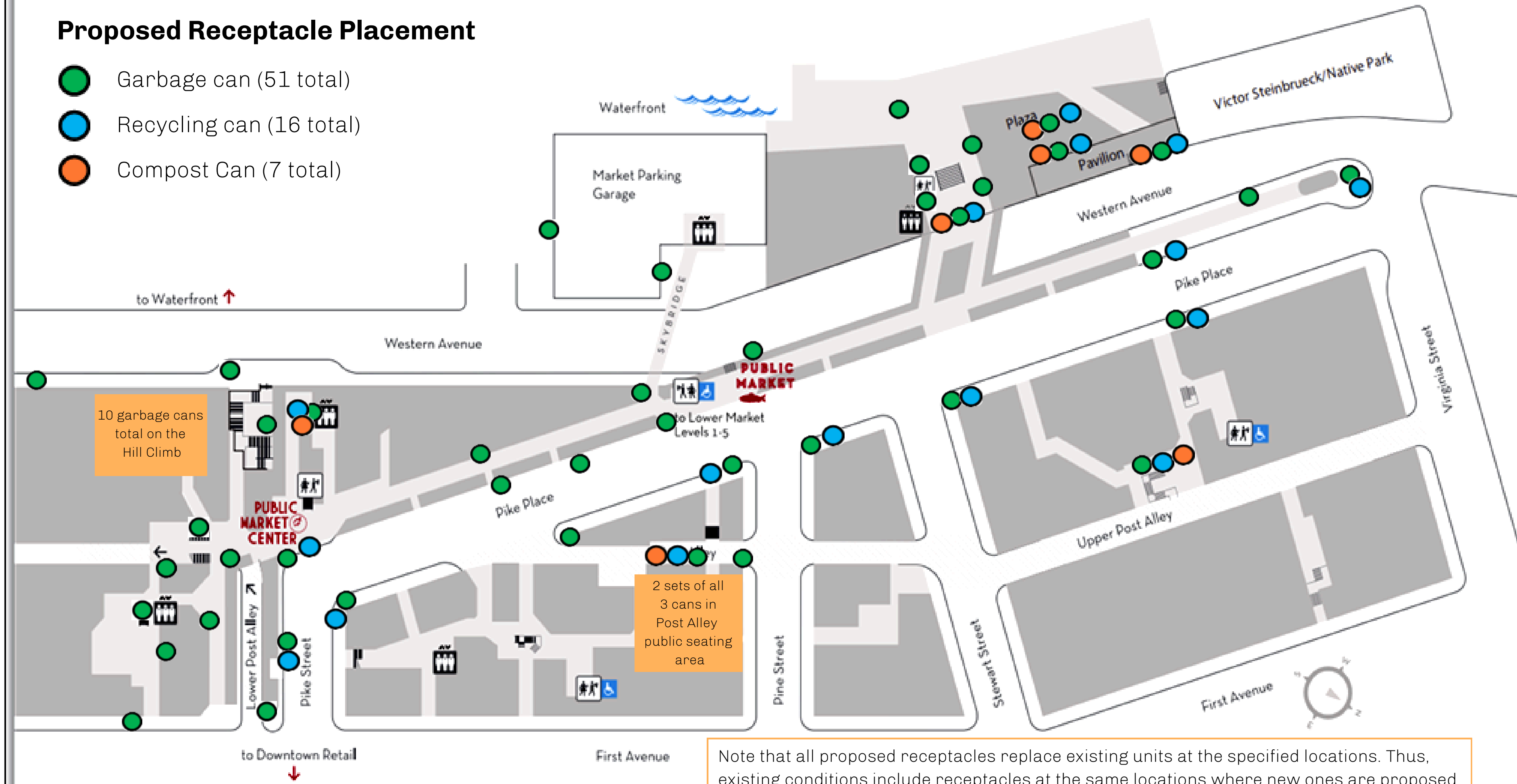
Soames Dunn Courtyard



Flower Row

Proposed Receptacle Placement

- Garbage can (51 total)
- Recycling can (16 total)
- Compost Can (7 total)



Note that all proposed receptacles replace existing units at the specified locations. Thus, existing conditions include receptacles at the same locations where new ones are proposed.