

# PRE-FAB CAFE PILOT PROGRAM

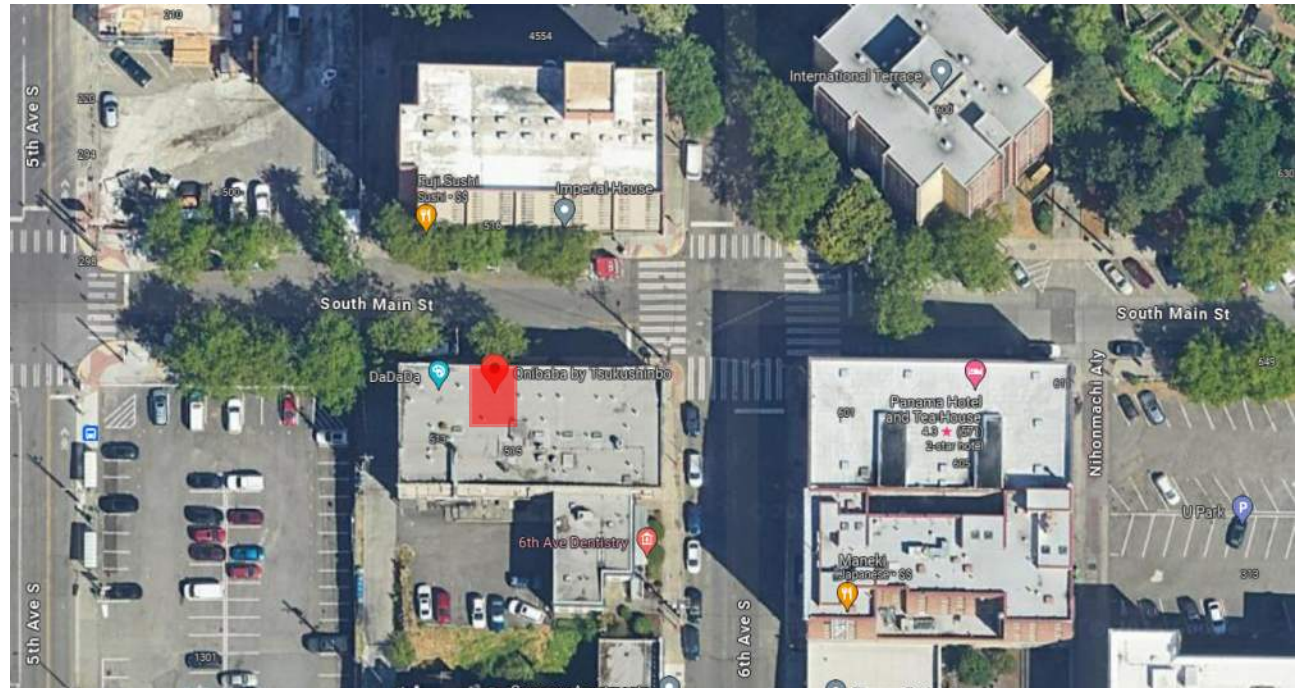
## Project Description

As part of the Mayor's Downtown Activation Plan, the Seattle Department of Transportation and Office of Economic Development are launching a pilot program that will allow small businesses to rent an outdoor café space to activate their street and provide outside seating for customers.

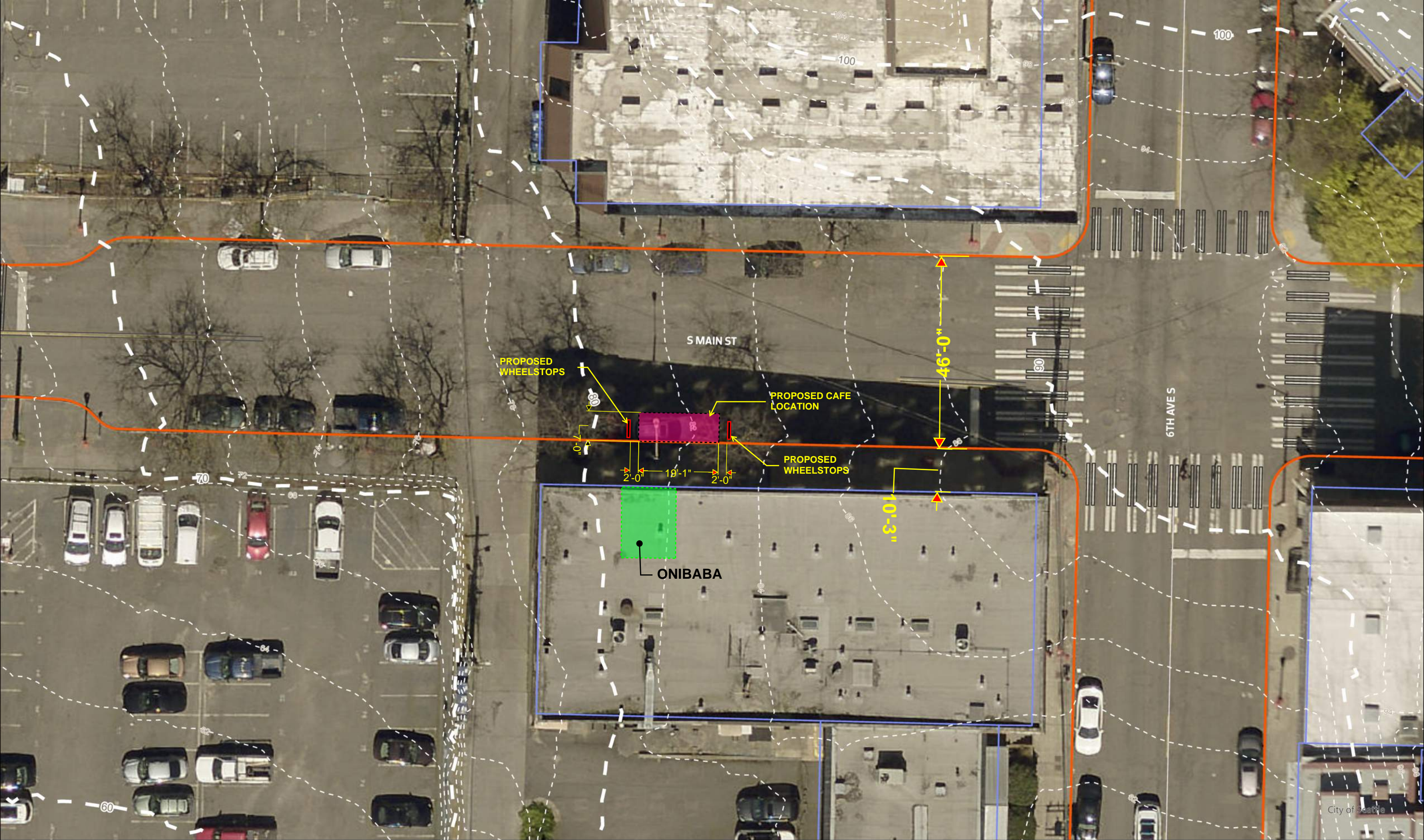
SDOT and OED are working with businesses in the Chinatown-International District on this pilot to bring more opportunity, activation, and public space benefits to the area. Additionally, these outdoor dining structures will be featured at a large upcoming conference for the International Downtown Association, bringing the economic benefits of this conference to the CID this fall.

For this pilot program, the city is buying two high-quality pre-fabricated cafes that can be quickly assembled and disassembled with minimal tools and will loan or rent them to local businesses to "test" if outdoor dining works for their business. If the cafes don't prove successful, the city will remove them. Currently, both cafes are proposed for the CID neighborhood and will be in use as additional serving space for the adjacent business. When the business is not open, the cafe will be opened to the public. See the map to the right for their exact locations.

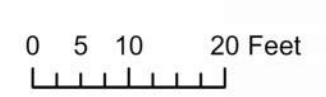
## Site 01 - ONIBABA





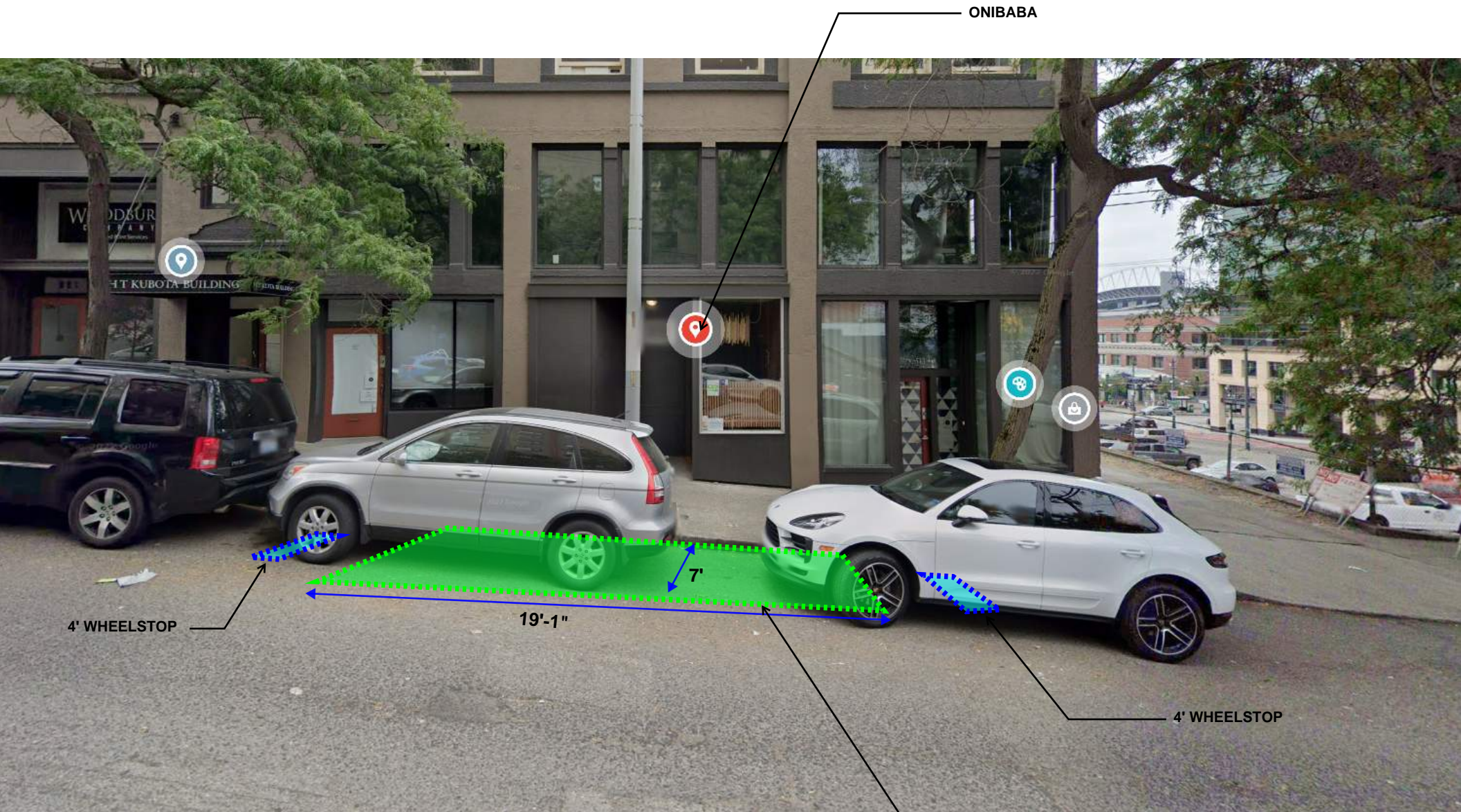


# ONIBABA SITE PLAN





# ONIBABA LOCATION



ONIBABA

4' WHEELSTOP

19'-1"

7'

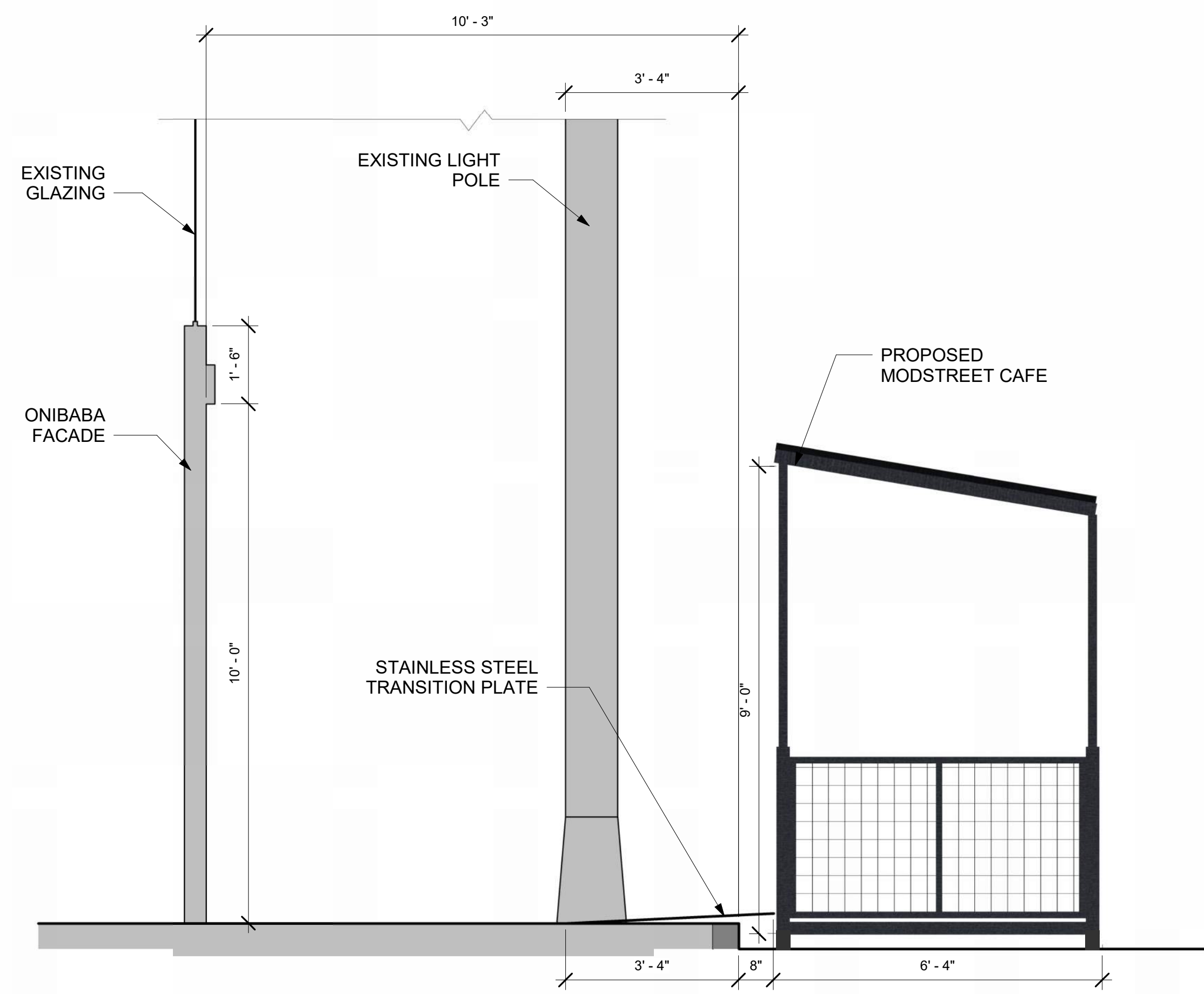
4' WHEELSTOP

LOCATION OF  
NEW CAFE AT  
ONIBABA  
(6'-4.5" X 19'-1")

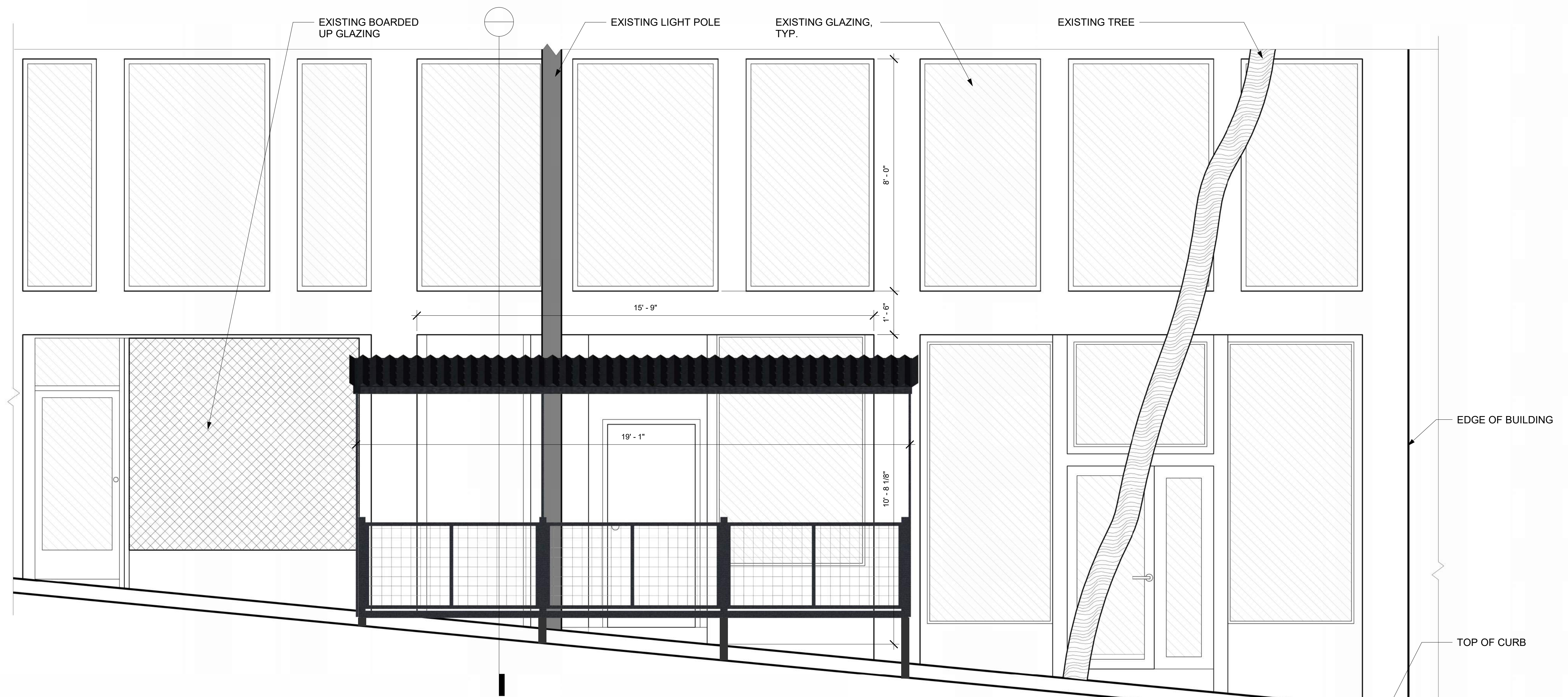
# ONIBABA FURNITURE







1 ONIBABA - SECTION  
1/2" = 1'-0"



2 ONIBABA ELEVATION  
1/2" = 1'-0"



4

3

2

1

ROOF MATERIAL IS POWDER COATED  
26 GAUGE CORRUGATED STEEL

STRUCTURE IS POWDER  
COATED STEEL TUBE, TYP.

WOOD DECKING

2:12 ROOF PITCH

12'4"

6'1/2"

3'0"

19'1 1/2"

9'0"

6'3/8"

7'10 1/2"

6'4 3/8"



6X18 PARKLET WITH ROOF

SEATTLE WA

MODSTREET

NAME	DATE
DRAWN DI	5/17/2024

PROPRIETARY AND CONFIDENTIAL

THE INFORMATION CONTAINED  
IN THIS DRAWING IS THE SOLE  
PROPERTY OF MODSTREET. ANY  
REPRODUCTION IN PART OR AS A  
WHOLE WITHOUT THE WRITTEN  
PERMISSION OF MODSTREET IS  
PROHIBITED.

SIZE	DWG. NO.	REV
<b>B</b>	P-0618-03-03	<b>1</b>

SCALE: 1:35

SHEET 2 OF 3

4

3

2

1

B

B

A

A

# CAFE ON SLOPED STREET

**POWDER COATED 26 GAUGE CORRUGATED STEEL**

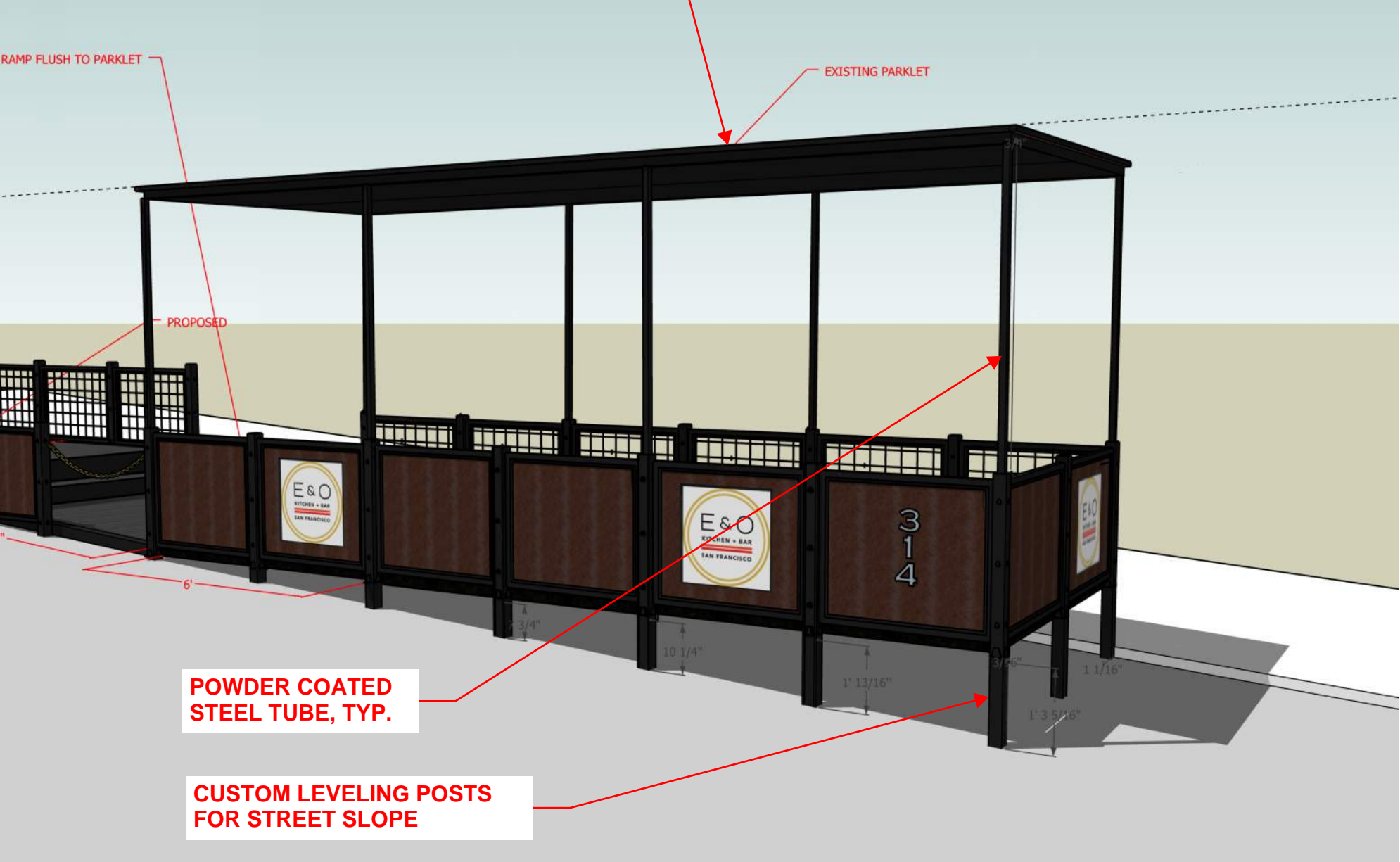
RAMP FLUSH TO PARKLET

EXISTING PARKLET

PROPOSED

**POWDER COATED STEEL TUBE, TYP.**

**CUSTOM LEVELING POSTS FOR STREET SLOPE**





# MOD STREET CAFE PRODUCT EXAMPLES



**LEVELING FEET**

**ADA ACCESS**

**OVERHEAD PROTECTION OPTION**

**FENCNG TYPE TO BE PURCHASED**



# CAFE DECKING

[WHY FIBERON](#) [GET INSPIRED](#) [PRODUCTS](#)



[START YOUR PROJECT](#) [RESOURCES](#)



[Home](#) > [Products](#) > [Good Life Decking](#)



## Good Life Decking

### Product Details

Priced closer to wood, Good Life decking includes classic multi-tonal and solid hues, perfect for creating a casual outdoor living space with an authentic wood look.

- The Escapes Collection features multi-tonal colors that resemble exotic hardwoods.
- The Weekender Collection features solid colors for a traditional stained deck look.
- Durable composite core resists splintering, rotting, cracking, insects and decay.
- Three-sided cap layer helps resist staining and fading.
- Boards never need sanding, staining or painting. Simply clean with soap and water or a mild cleaner.
- Good Life contains 96% recycled material, combining recycled wood with the long-lasting resilience of recycled plastic.
- A Fire-rated version of Good Life decking is available, which helps resist damage from fire and reduce flame spread, providing added protection for the deck and home (excluding Cabana).
- The Escapes Collection is backed by a 30-year performance, stain and fade warranty.
- The Weekender Collection is backed by a 25-year performance, stain and fade warranty.



### Color (Escapes - Cabana)












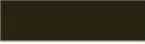






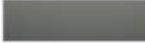

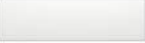
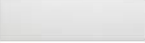
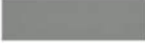


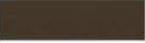



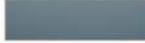








[Find a dealer](#)

**DECKING CHOICE**

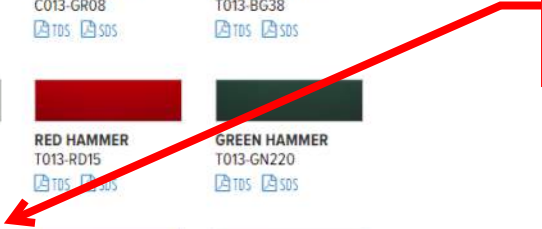


# STRUCTURE COLOR

COLORS HAMMER FINISHES	SUPERDURABLES WHITES & BEIGES PRIMERS	BLACKS GREYS	METALLICS PEARLESCENTS SPECIALTY FINISHES	
 <b>DARK RED 90 GLOSS</b> P009-RD02 <a href="#">TDS</a> <a href="#">SDS</a>	 <b>RED 90 GLOSS</b> T009-RD03 <a href="#">TDS</a> <a href="#">SDS</a>	 <b>RED TEXTURE</b> T241-RD129 <a href="#">TDS</a> <a href="#">SDS</a>	 <b>RED 90 GLOSS</b> T009-RD01 <a href="#">TDS</a> <a href="#">SDS</a>	 <b>INTERNATIONAL ORANGE 90 GLOSS</b> T009-OG26 <a href="#">TDS</a> <a href="#">SDS</a>
 <b>SAFETY ORANGE 90 GLOSS</b> T009-OG01 <a href="#">TDS</a> <a href="#">SDS</a>	 <b>YELLOW 90 GLOSS</b> T009-YL71 <a href="#">TDS</a> <a href="#">SDS</a>	 <b>FS 13538 YELLOW 90 GLOSS</b> T009-YL14 <a href="#">TDS</a> <a href="#">SDS</a>	 <b>YELLOW 90 GLOSS</b> T009-YL01 <a href="#">TDS</a> <a href="#">SDS</a>	 <b>TRACTOR YELLOW 90 GLOSS</b> C209-YL130 <a href="#">TDS</a> <a href="#">SDS</a>
 <b>RAL 8028 TERRA BROWN 90 GLOSS</b> C209-BR358 <a href="#">TDS</a> <a href="#">SDS</a>	 <b>BRONZE 40 GLOSS</b> P004-BR23 <a href="#">TDS</a> <a href="#">SDS</a>	 <b>BROWN TEXTURE</b> T032-BR62 <a href="#">TDS</a> <a href="#">SDS</a>	 <b>FS 34094 OD GREEN FLAT</b> P000-GN264 <a href="#">TDS</a> <a href="#">SDS</a>	 <b>TRAFFIC GREEN 70 GLOSS</b> T007-GN16 <a href="#">TDS</a> <a href="#">SDS</a>
 <b>FS14066 D.O.T GREEN 70 GLOSS</b> T007-GN13 <a href="#">TDS</a> <a href="#">SDS</a>	 <b>GREEN 60 GLOSS</b> C006-GN03 <a href="#">TDS</a> <a href="#">SDS</a>	 <b>TRACTOR GREEN 90 GLOSS</b> C209-GN411 <a href="#">TDS</a> <a href="#">SDS</a>	 <b>GREY HAMMER</b> C013-GR08 <a href="#">TDS</a> <a href="#">SDS</a>	 <b>BEIGE HAMMER</b> T013-BG38 <a href="#">TDS</a> <a href="#">SDS</a>
 <b>WHITE HAMMER</b> T012-WH260 <a href="#">TDS</a> <a href="#">SDS</a>	 <b>WHITE HAMMER</b> T013-WH09 <a href="#">TDS</a> <a href="#">SDS</a>	 <b>RAL 7035 LIGHT GREY HAMMER</b> T013-GR185 <a href="#">TDS</a> <a href="#">SDS</a>	 <b>RED HAMMER</b> T013-RD15 <a href="#">TDS</a> <a href="#">SDS</a>	 <b>GREEN HAMMER</b> T013-GN220 <a href="#">TDS</a> <a href="#">SDS</a>
 <b>BRONZE HAMMER</b> T012-BR161 <a href="#">TDS</a> <a href="#">SDS</a>	 <b>BLACK HAMMER</b> T013-BK62 <a href="#">TDS</a> <a href="#">SDS</a>	 <b>BLACK HAMMER LOW GLOSS</b> E311-BK04 ** <a href="#">TDS</a> <a href="#">SDS</a>	 <b>BLUE TEXTURE</b> C241-BL544 <a href="#">TDS</a> <a href="#">SDS</a>	 <b>FS 25109 BLUE TEXTURE</b> T032-BL04 <a href="#">TDS</a>
 <b>BLUE HAMMER</b> T013-BL468 <a href="#">TDS</a> <a href="#">SDS</a>	 <b>BLUE 90 GLOSS</b> T009-BL01 <a href="#">TDS</a> <a href="#">SDS</a>	 <b>BLUE 90 GLOSS</b> T009-BL05 <a href="#">TDS</a> <a href="#">SDS</a>	 <b>DARK BLUE 80 GLOSS</b> T008-BL20 <a href="#">TDS</a> <a href="#">SDS</a>	 <b>BLUE TEXTURE</b> C241-BL210 <a href="#">TDS</a> <a href="#">SDS</a>
 <b>BLUE 80 GLOSS</b> H308-BL03 ** <a href="#">TDS</a> <a href="#">SDS</a>				



**BLACK HAMMER LOW GLOSS**  
E311-BK04 \*\*





# WHEELSTOP PRODUCT



## Quikrete 4' Concrete Car Stop Parking Bumper

SKU#: 227CPB48

MFG#: 66

**\$57.69** / EACH

✓ In Stock

[Add to List](#) | [Share](#)

QTY

1

**ADD TO CART**

**Shipping From** [Change](#)

White Cap - Ecommerce 594  
4500 5th Ave South

[View More](#)

Select your local branch for best pricing and delivery options.

Orders ship in 1-3 business days.

Item does not meet small parcel ground shipping requirements.  
Item can only be delivered to select locations.

### PRODUCT DETAILS

Quikrete Concrete Parking Bumper, 4 ft Length

- Install with rebar stakes
- 4' stop
- Concrete parking bumper



## **Barb Biondo CEPTED Assessment**

Here are CPTED recommendations and a question from me and my colleague Monica Ly regarding the pre-fab street café pilot for the C-ID. I'm using bold font to identify the relevant crime prevention or CPTED concept and have a CPTED overview attached.

First, street cafes, when used for their intended purpose, are a great way to “activate” the street environment and add vibrancy to the business district by attracting attention of passing motorists and pedestrians, drawing them on to a street they might otherwise pass by. More interest will increase pedestrian traffic to the area and (hopefully) customers to C-ID businesses in the vicinity, in doing so the street cafes have potential to play an important crime prevention role by reinforcing positive norms for use of these public spaces and helping to deter unwanted behaviors. (Activity Generators / **Guardianship**)

It will be important to provide open sight lines into the café structures which the transparent side panels options provide best. This promotes **Natural Surveillance**, helping customers and staff see if the space is safe to enter. Open sight lines will also help deter unwanted uses of the space such as camping or incidental toilet use. We strongly recommend extending this concept to the adjacent businesses that will benefit from the street café structure and require they maximize opportunities to open sight lines by removing boards, posters and displays, and opening drapes or blinds that block their storefront windows. Limit ads and window displays to 10% of window. Open views from adjacent businesses to the street café will allow staff to view and manage activity and will create the perception of being seen which can help deter unwanted behavior.

It will also be important to add **Lighting** to the street café structures to promote **Natural Surveillance**, particularly for the Onibaba location where there is less light available from streetlights or adjacent businesses. Strings of café lights can help increase light levels and add a festive touch that helps attract attention and increase safety for street café users and passing pedestrians.

Maintenance if the street cafes will be important. We recommend the entity responsible for ongoing maintenance (SDOT, the businesses benefiting, the BIA??) is clearly identified at the outset and that the standard requires daily monitoring and cleaning and that any damage to the street café structure or furniture is promptly repaired, and that tagging, or graffiti is promptly removed. Well-maintained, clean spaces promote a welcoming image that attracts positive uses and discourages unwanted uses. (**Image and Maintenance**)

The questions regarding the street cafes comes from a practical public safety perspective on how the space will be managed after adjacent businesses are closed and how unwanted use of the space will be handled. A key CPTED concept that relates to this question is **Territorial Reinforcement**. In order to maintain these spaces for positive business and community use, to avoid conflicting uses and to support those responsible to intervene when illegal or unwanted behavior occurs, I recommend exploring this question in more depth. We have some recent experience we can hopefully learn from with the street furniture at the new plaza at 1st and Pike.

*PSM agrees with this potential outcome*

*Sight lines will be maintained as shown in the drawings. Transparency will be maintained to meet the Outdoor Dining Director's Rule requirement.*

*Lighting concepts will be discussed with the applicants. In order to have this process moving forward for the installation of the structure, we would like to have a discussion about this during our meeting.*

*Maintenance and management will be part of the contract between OED and business entity.*

*This will be coordinated between the business owner, OED, BIA, SDOT, and SFD.*