

Location Plan | Not to Scale



Location Plan | Not to Scale

FERDINAND FESTIVAL STREET

Historic Landmark Review

Friends of Ferdinand Festival Street

October 2023

The Patio

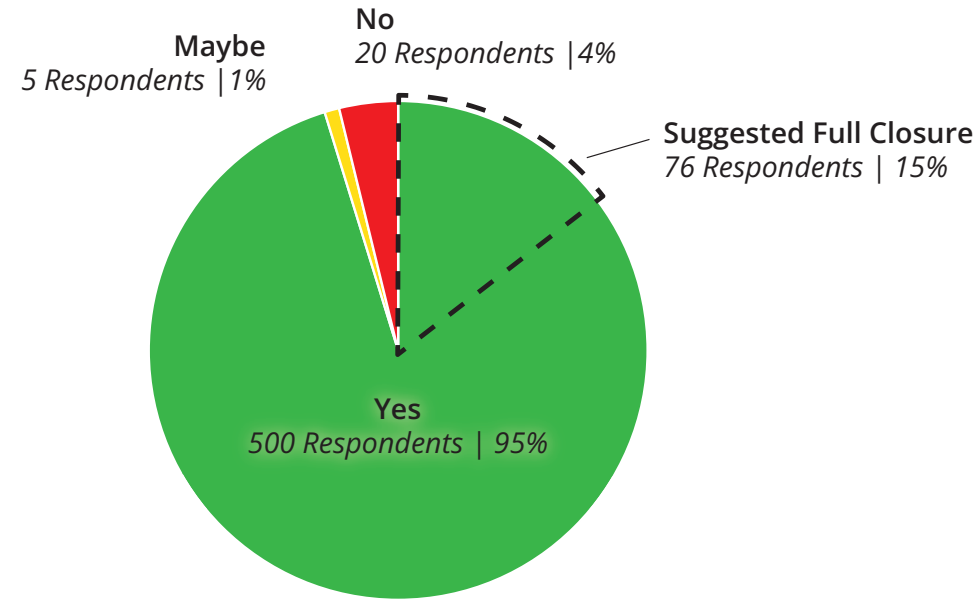
The Patio was a temporary covid-response intervention from 2019-2021. Closing off one lane of Ferdinand Street, the Patio provided a flexible seating area under the shelter of a temporary canopy. It was highly used as an informal gathering space and for community events



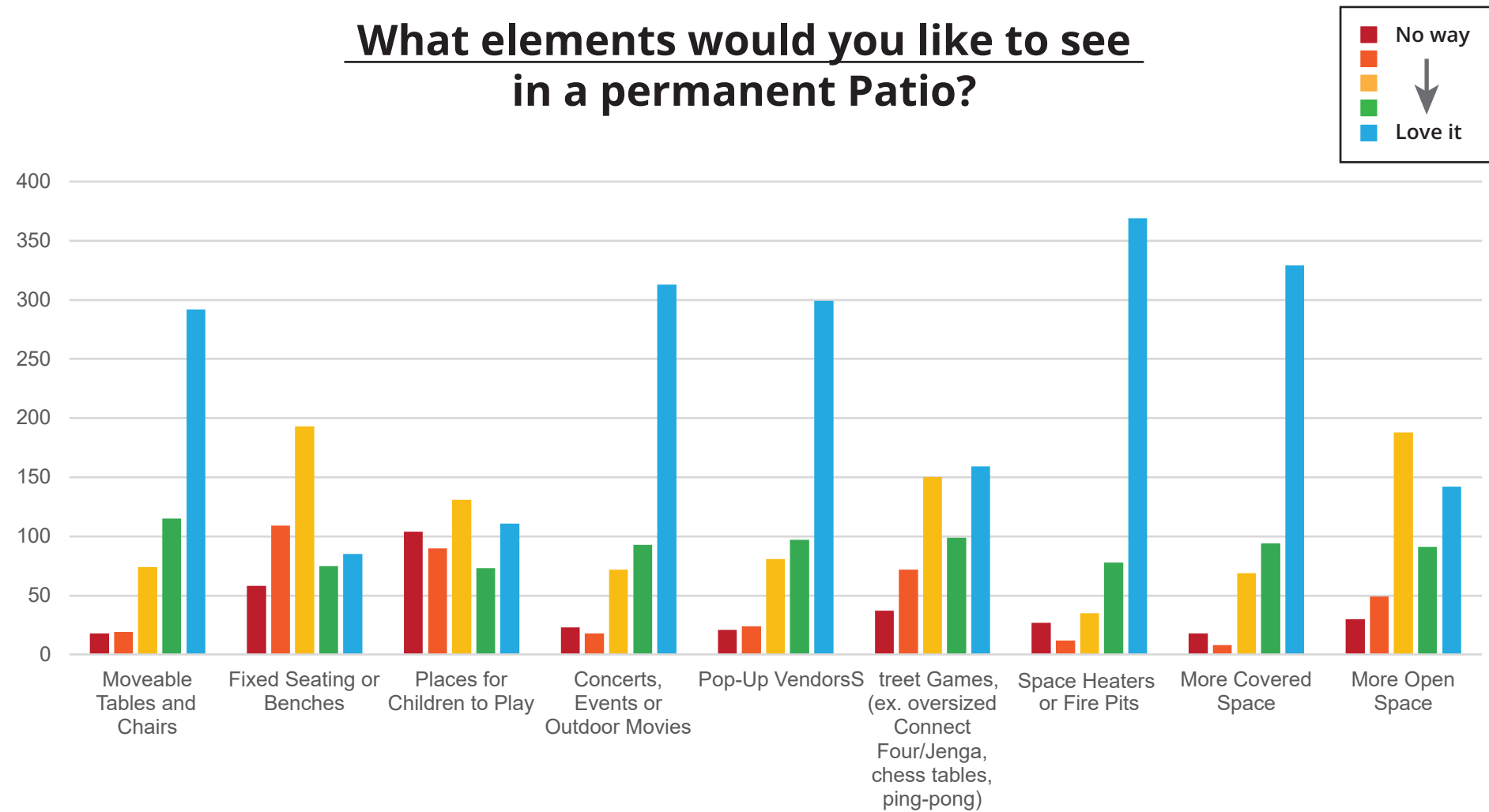
Columbia City Patio Survey Results

Extensive community outreach was undertaken in 2021 & 2022 to determine community interest and priorities for a permanent public gathering space at the location of the Patio on Ferdinand Street.

Supportive of a Permanent Patio?



What elements would you like to see in a permanent Patio?

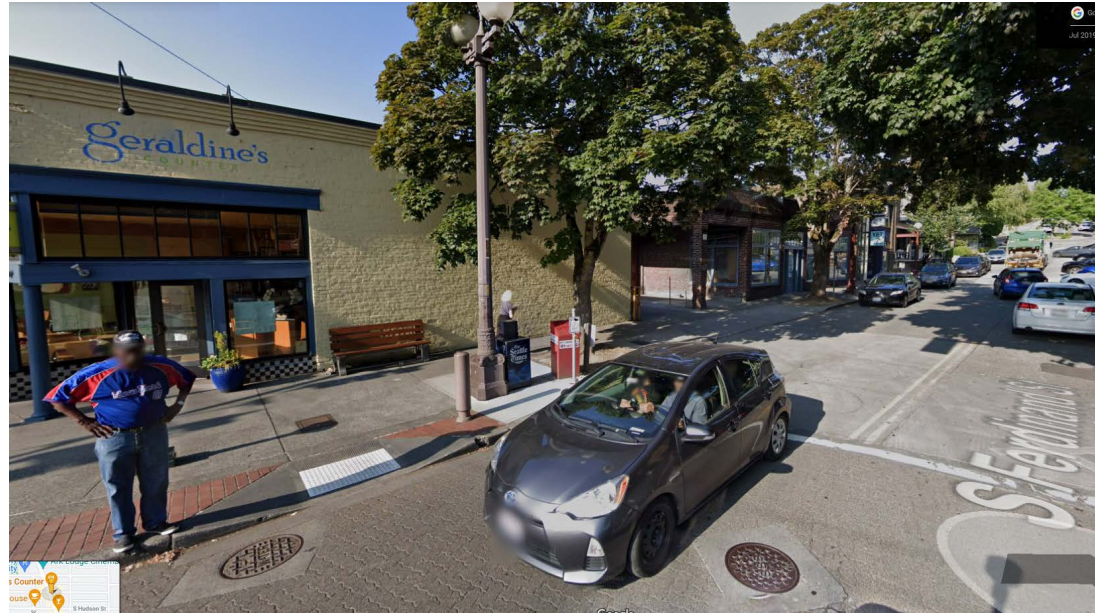


SDOT FESTIVAL STREET CONCEPT

Since some local businesses wanted to maintain vehicular access on Ferdinand, a design concept emerged focused on the idea of a “Festival Street.” Some parking would be removed to create seating areas along the sidewalk, and the street could be easily closed for festivals and events.



Existing Conditions and Character



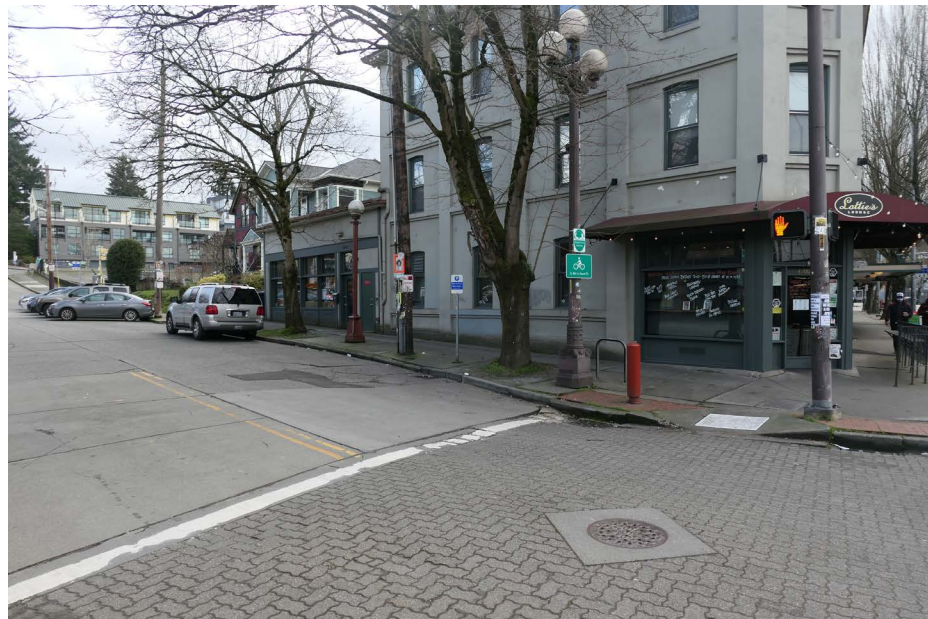
Looking Northeast from Rainier Ave S.



Looking North into Alley from Ferdinand



Looking Northwest towards Rainier Ave S.



Looking Southeast from Rainier Ave S.

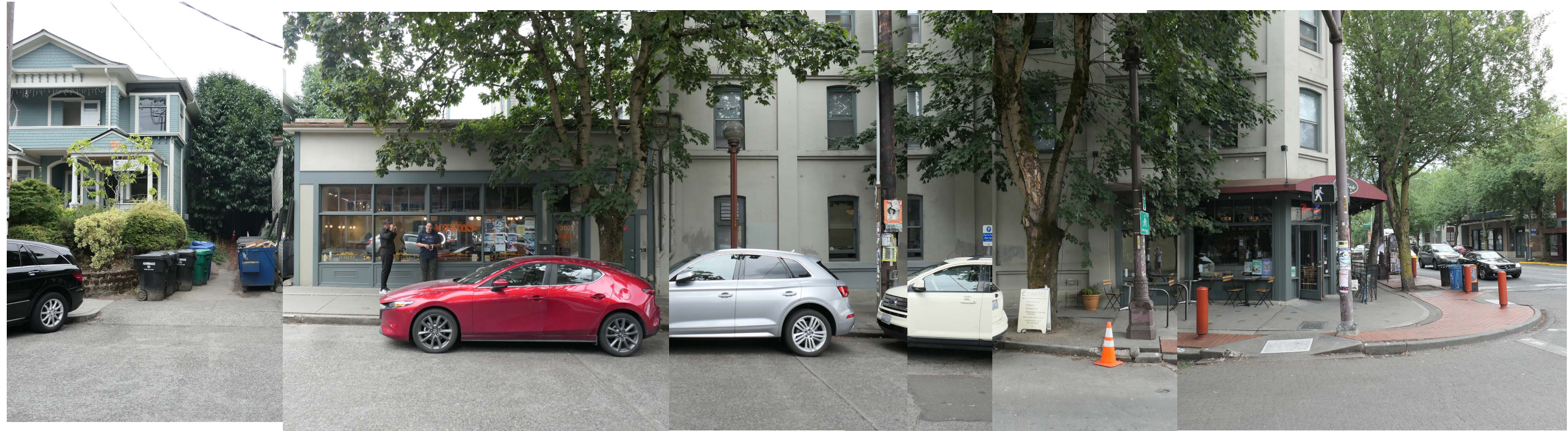


Looking Southwest towards Rainier Ave S.

Existing Conditions and Character

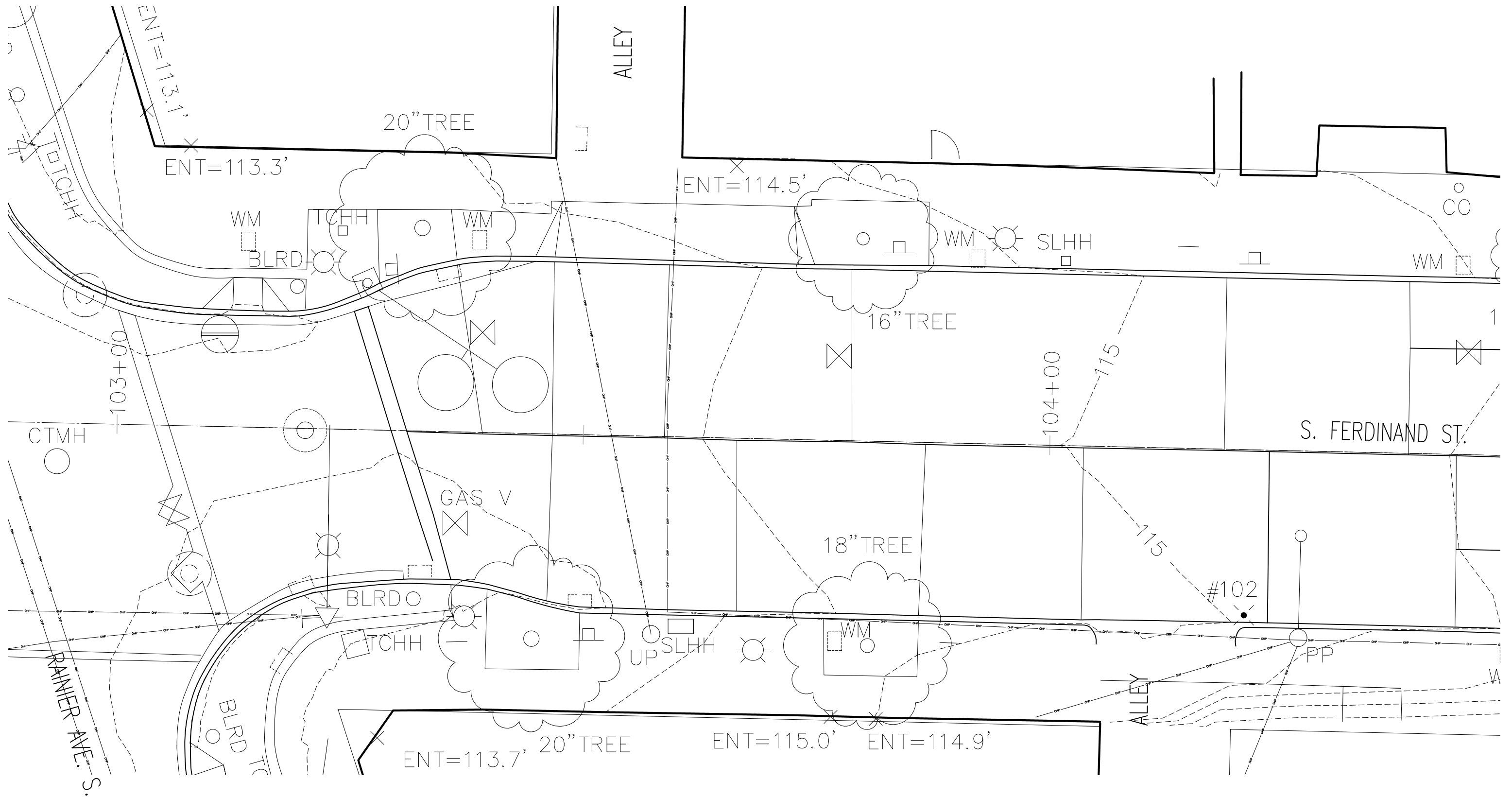


Looking North

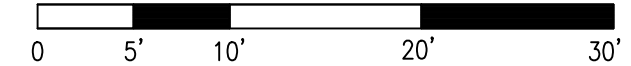


Looking South

Existing Conditions | Site Survey



SCALE: 1" = 10'-0"



DESIGN | MATERIALS



Corten Steel Planters



Laser Cut Aluminum Fencing - Black Powdercoat with Custom Artwork (TBD)



Pedestal Pavers (18"x18" Mutual Materials Vancouver Bay - Gray)



Electriduct Rubber Curb



Mahonia 'Soft Caress'

Plantings in Corten Steel Planters



Liriope muscari | Lillyturf



Fragaria chiloensis | Beach Strawberry



Buttercup



Landscape Forms | Parc Centre 30" Rounds Tables and Chairs | Color=Buttercup



SPU Standard Receptacles

FERDINAND FESTIVAL STREET | CONCEPT PLAN

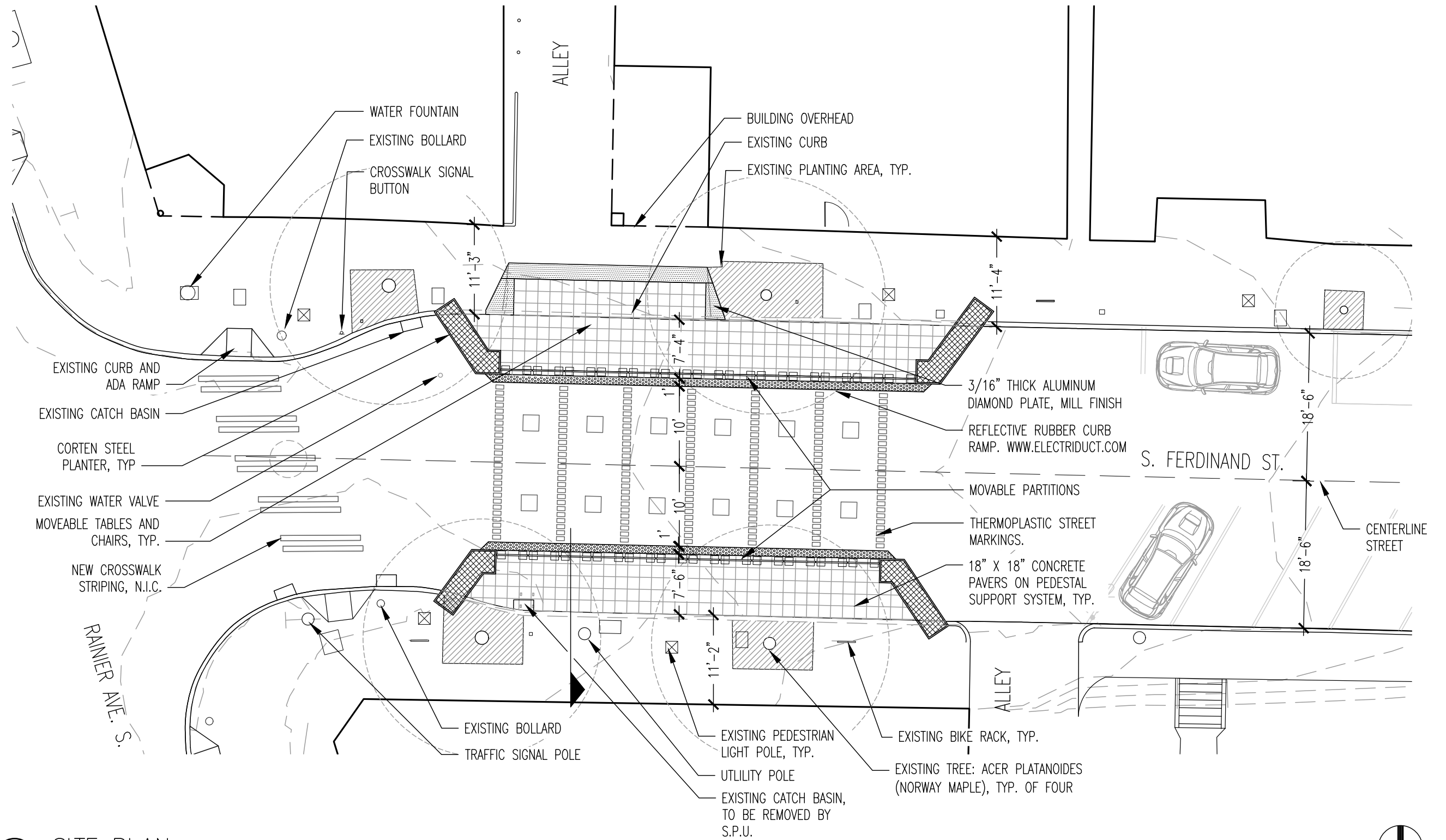


FERDINAND FESTIVAL STREET | CONCEPT PERSPECTIVE



Note : No signage on side of planters at this time.

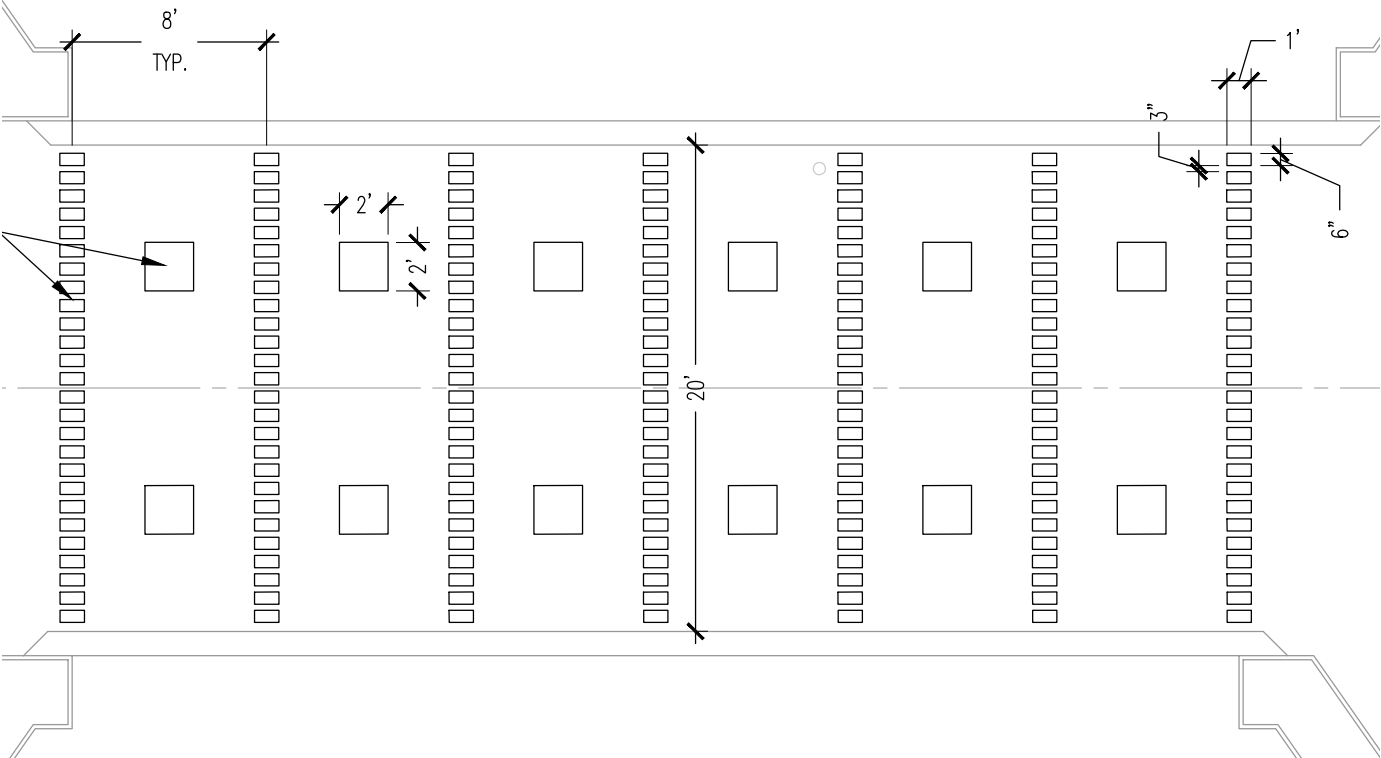
FERDINAND FESTIVAL STREET | SCHEMATIC PLAN



2 SITE PLAN
Scale: 3/32"=1'-0"



FERDINAND FESTIVAL STREET | THERMOPLASTIC STREET MARKINGS



MARKING COLOR:



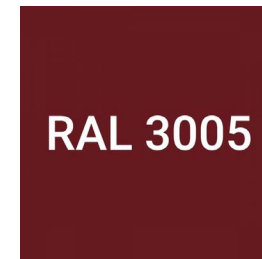
Santa Fe Clay

FERDINAND FESTIVAL STREET | STEEL PLANTERS

**PLANTER MATERIAL:
CORTEN STEEL**

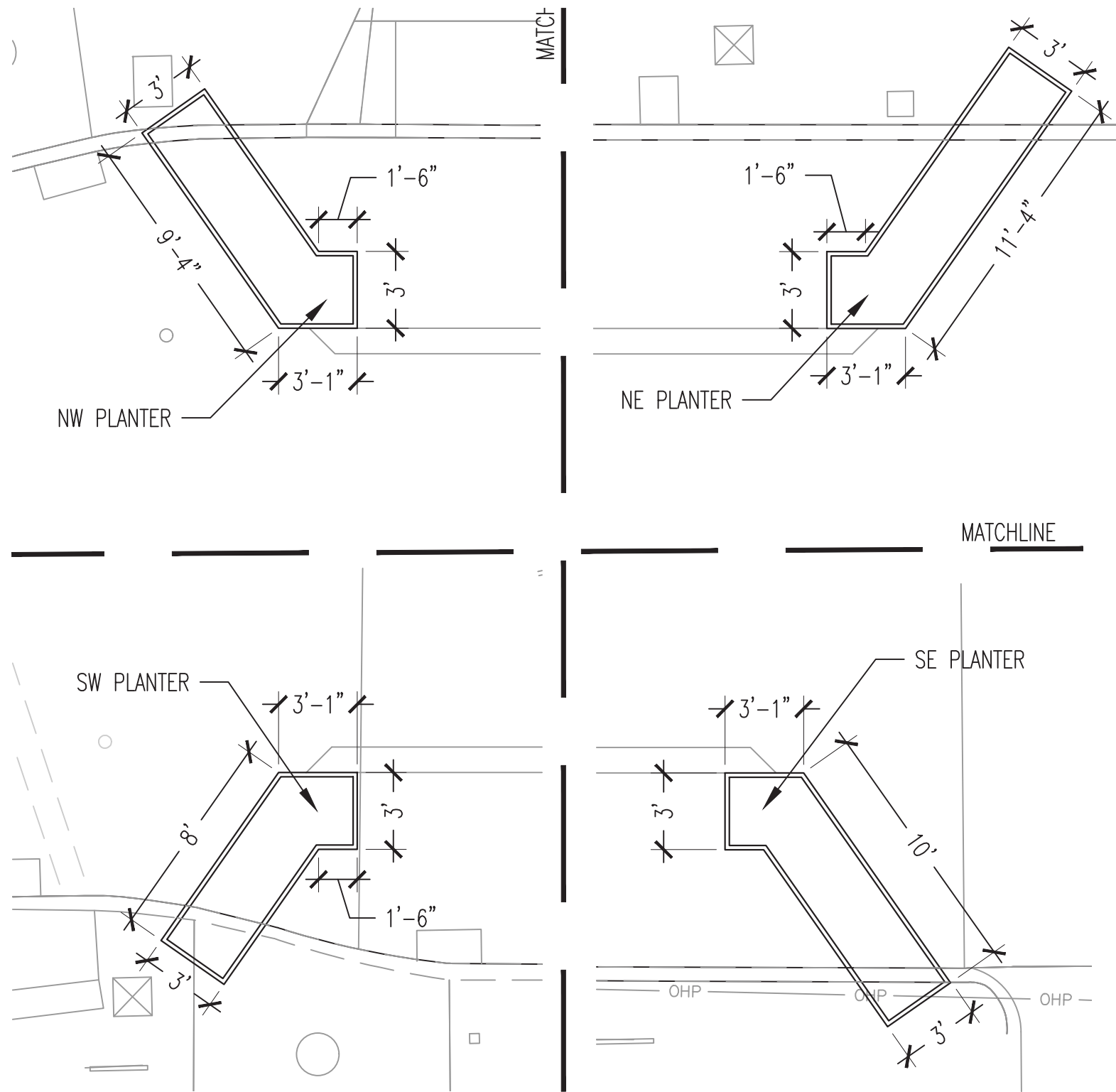
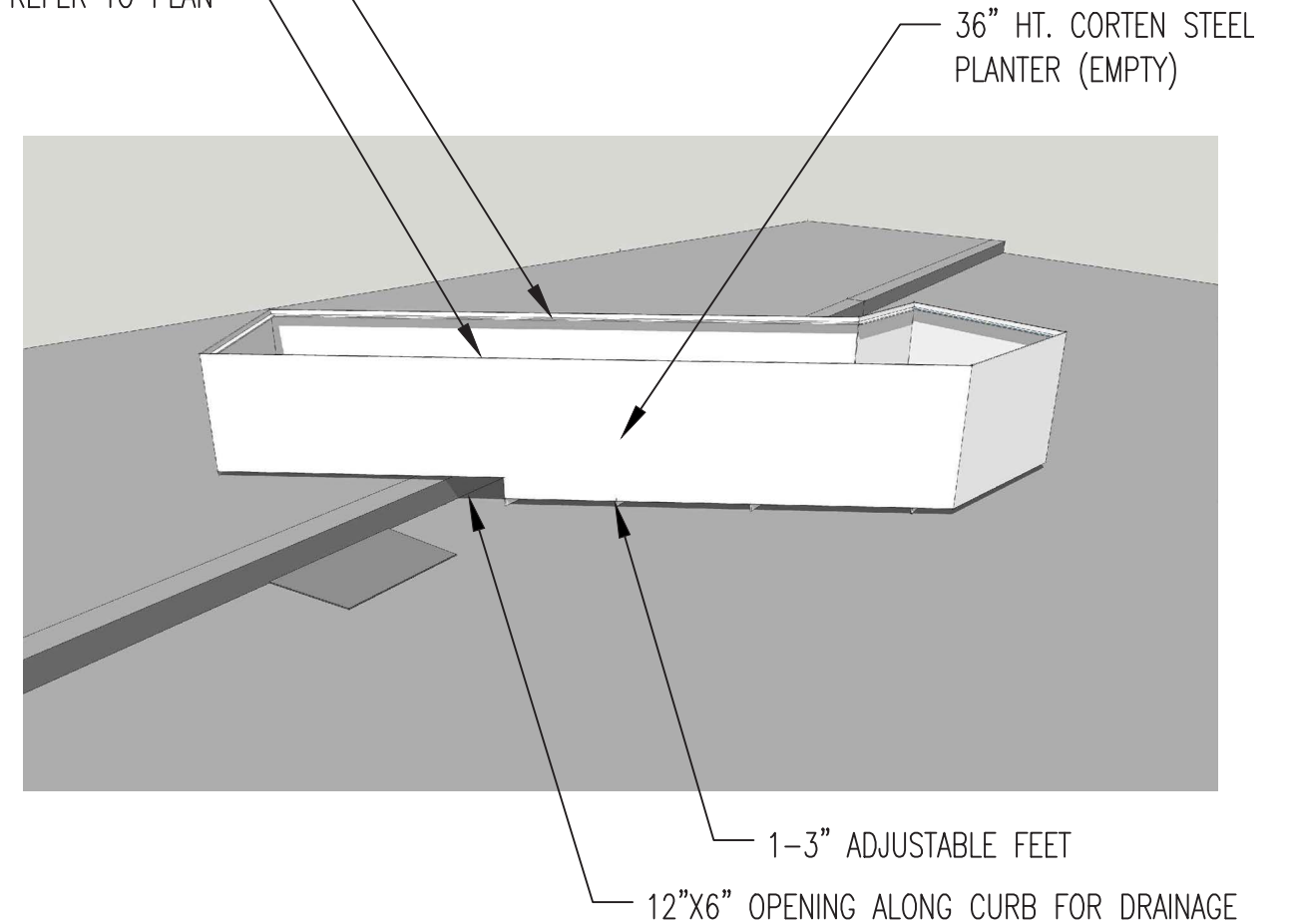


**ALTERNATIVE: POWDERCOAT
RAL COLOR 3005**



RAL 3005

1" LIP AROUND PERIMETER
LENGTH AND ORIENTATION VARIES.
REFER TO PLAN

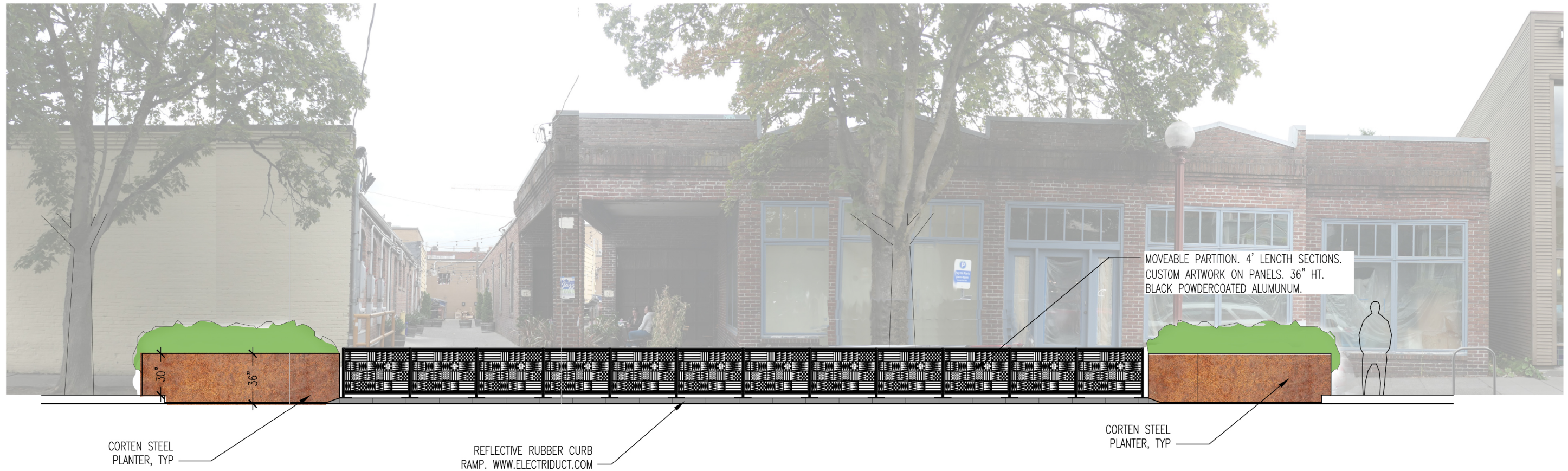


1 PLANTER LAYOUT
Scale: 3/16" = 1'-0"



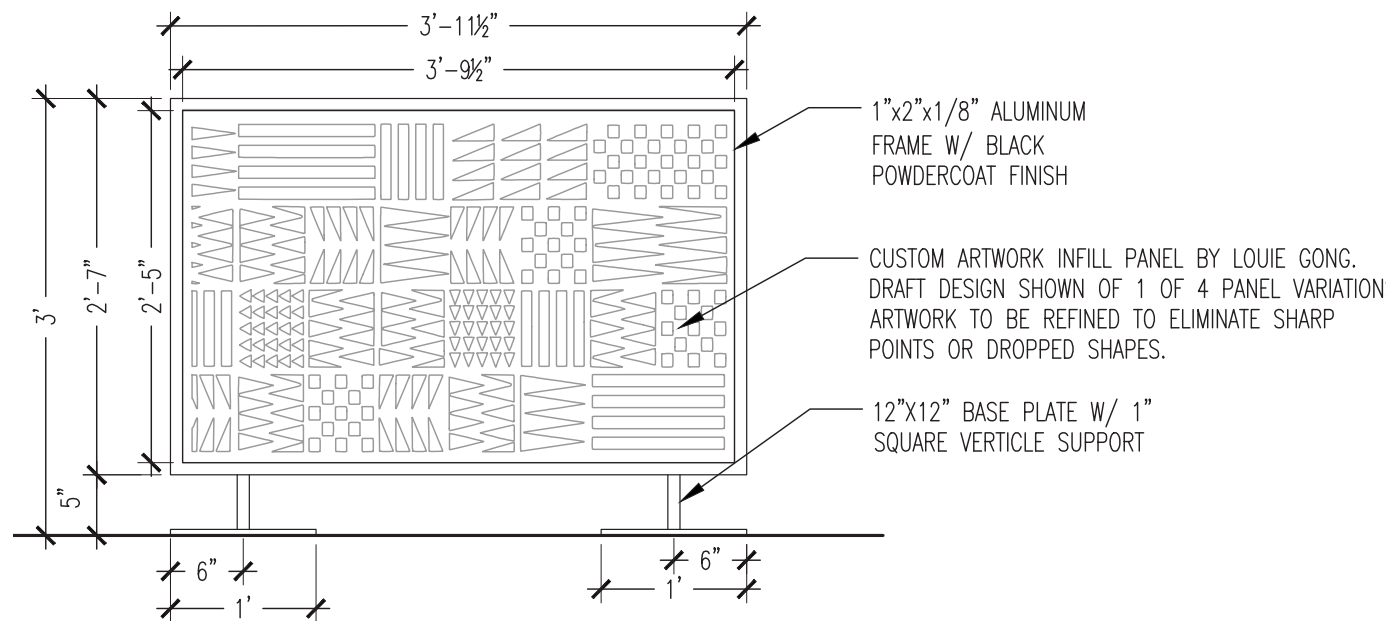
2 PERSPECTIVE: TYP. STEEL PLANTER
NOT TO SCALE

ELEVATION



East/West | Looking North

FENCE PANEL DETAIL



ARTIST FOR FENCE PANEL: LOUIE GONG



Louie Gong, M.Ed. (Nooksack) founded the groundbreaking lifestyle brand Eighth Generation with just a sharpie and a pair of canvas shoes - and then used the resourcefulness and creativity taught to him by his humble upbringing to build the fastest growing Native-owned company in the United States or Canada. Now one of the most successful Native artists in history, Louie's innovative, values-based business practices are the blueprint for future generations of cultural artists. Louie is also a Columbia City neighbor.

Addendum: Future Overhead Structures

We are also seeking guidance on a future second phase of the project constructing overhead structures to provide more shelter from the weather. The structures over the new seating area would have removable canopies that would stay year-round. When the street is closed to vehicles during events, additional canopy fabric could be strung across the street to provide more shelter. The conceptual image to the right shows what this could look like during a festival event.

