



RENDERING OF PROPOSED OUTDOOR DINING DECK



PROPOSED DESIGN TO MATCH EXISTING FRONT PORCH RAILING AND COLOR

PROJECT BRIEF:

WE PROPOSE THE REMOVAL OF THE EXISTING 30' x 12' PERGOLA STRUCTURE BUT PLAN TO RETAIN THE CURRENT FOOTPRINT TO BUILD A DECK PLATFORM FOR OPEN AIR SEASONAL DINING. OUR DESIGN WILL MATCH THE FAÇADE OF OUR BUILDING FOR AN OVERALL COHESIVE LOOK THAT CONFORMS TO BALLARD AVE LANDMARK DISTRICT BOARDS STATUTES.

NO ELECTRICITY WILL BE NECESSARY, STANDARD MUSHROOMS HEATERS WILL BE USED AND STORED IN RESTAURANT'S SE ALLEY

DESIGN:

- PLATFORM TO BE CONSTRUCTED AT CURB HEIGHT FOR SEAMLESS ADA ACCESS.
- POSTS ATTACHED TO SUBSTRUCTURE AND REINFORCED ON TOP OF DECK WITH RETURNS AND PLATFORM BRACES (SEE PHOTO BELOW)



- A 42" HANDRAIL WITH BALUSTERS WILL EXTEND ALONG THE ENTIRE PERIMETER TO SATISFY LCB, WITH THREE REMOVABLE SECTIONS ON THE STREET SIDE TO ALLOW FARMER'S MARKET VENDORS TO USE THE SPACE ON SUNDAYS

MATERIALS

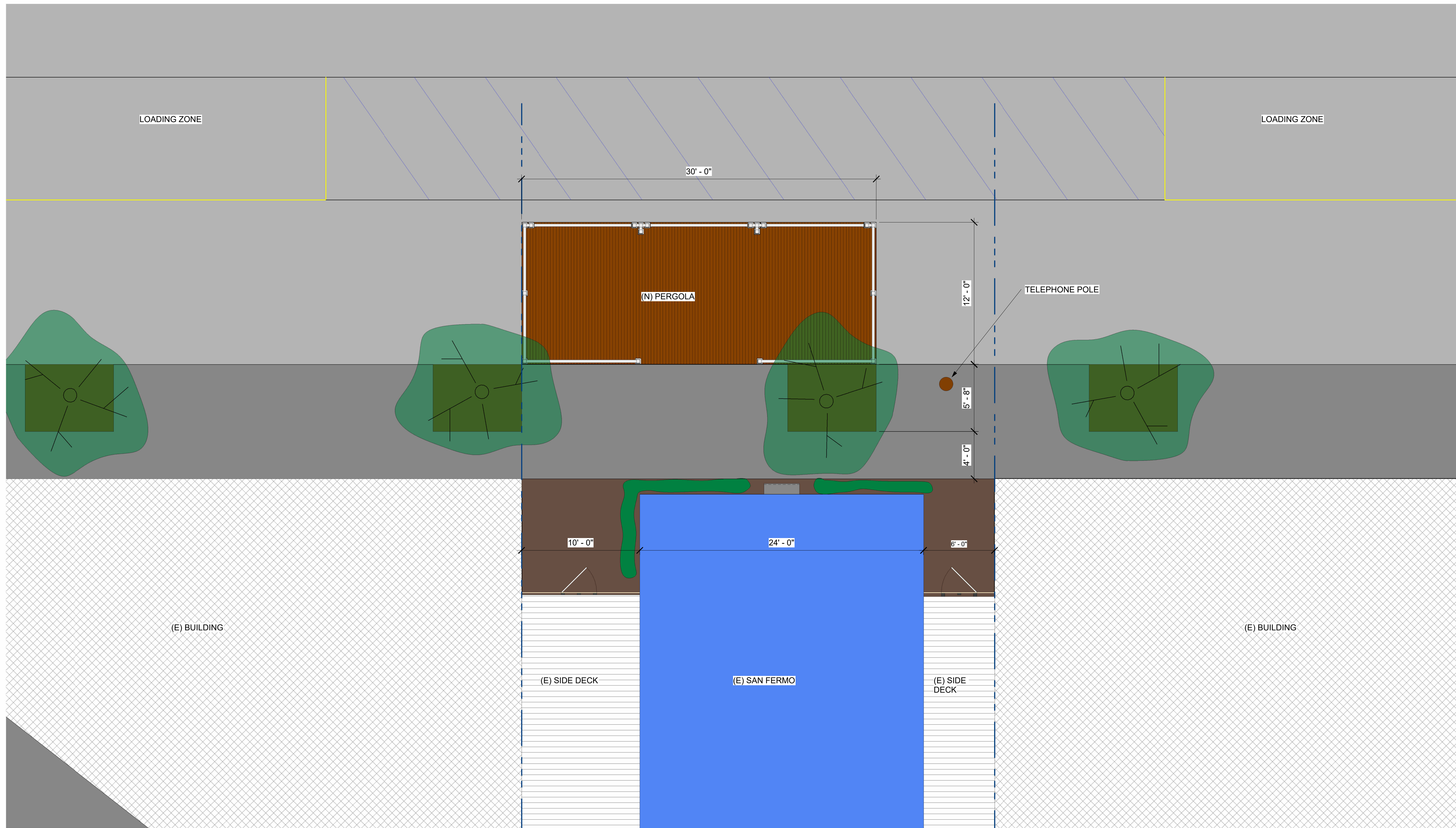
- DECK -2X8 APPEARANCE TREATED DECKING (SUNDWOOD)
- POSTS, HANDRAILS BALUSTERS – APPEARANCE GRADE LUMBER (NON-PERFORATED)
- SUBSTRUCTURE – STANDARD TREATED 2X4 AND 2X6 LUMBER, ON SIDE TO ALLOW FOR 3" HEIGHT WITH DECKING. SCREENED ON NW SIDE TO LIMIT LEAVES AND DEBRIS FROM FLOWING UNDER THE DECK

FINISHES

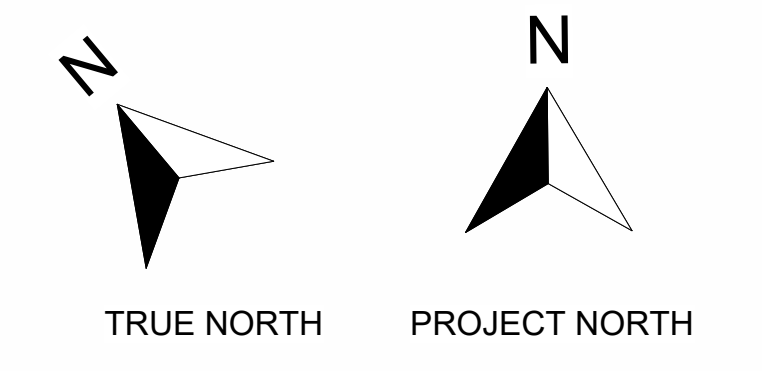
- DECK AND VISIBLE SUPPORT STRUCTURE – OILED ANNUALLY WITH OUTDOOR RATED DECK FINISH (NO STAIN)

Sheet List	
A001	COVER SHEET
A101	SITE PLAN
A102	PERGOLA PLAN VIEW
A201	ELEVATIONS
A301	DETAILS
A401	FURNITURE
A501	EXISTING CONDITIONS





1 SITE PLAN
1/4" = 1'-0"



Project Status
4-22-24
REVISION 2

5337 Ballard Ave NW
Seattle, WA 98107
www.richardhinerarchitects.com

310.433.4456 TEL
206.763.8222 TEL
206.763.7562 FAX

5337 Ballard Ave NW
Seattle, WA 98107



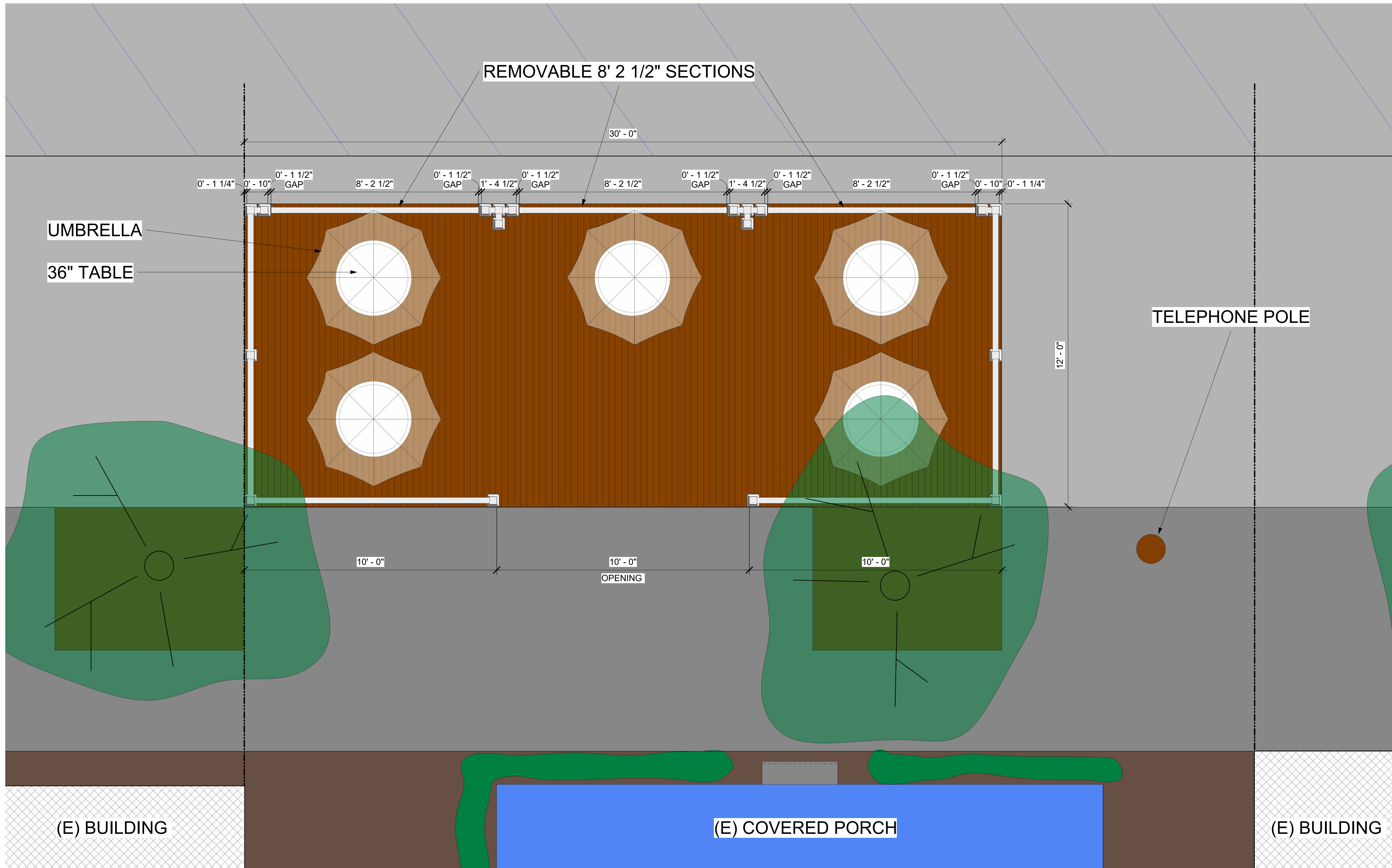
RICHARD HINER
ARCHITECTS

SAN FERMO STREET CAFE

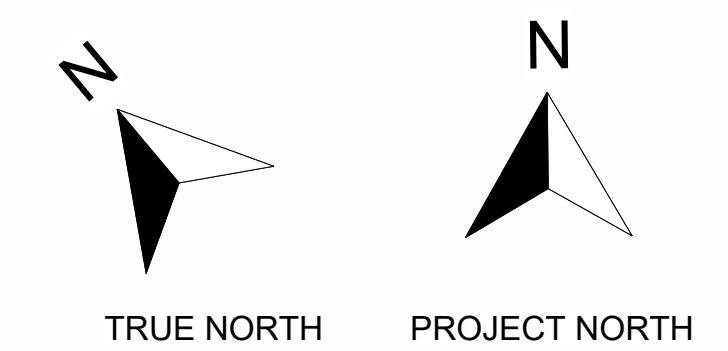
5341 BALLARD AVE NW, SEATTLE, WA 98107

SITE PLAN
SCALE: 1/4" = 1'-0"

SHEET NUMBER:
A101
OF



1 PERGOLA PLAN VIEW
1/2" = 1'-0"



Project Status
4-22-24
REVISION 2

310.433.4456 TEL
206.763.8222 TEL
206.763.7562 FAX
www.richardhinerarchitects.com
5337 Ballard Ave NW
Seattle, WA 98107
RICHARD HINER
ARCHITECTS

SAN FERMO STREET CAFE
5341 BALLARD AVE NW, SEATTLE, WA 98107

PERGOLA PLAN VIEW
Auth@hiner
SCALE: 1/2" = 1'-0"

SHEET NUMBER:
A102
OF



1 Project East
1/4" = 1'-0"



2 Project West
1/4" = 1'-0"



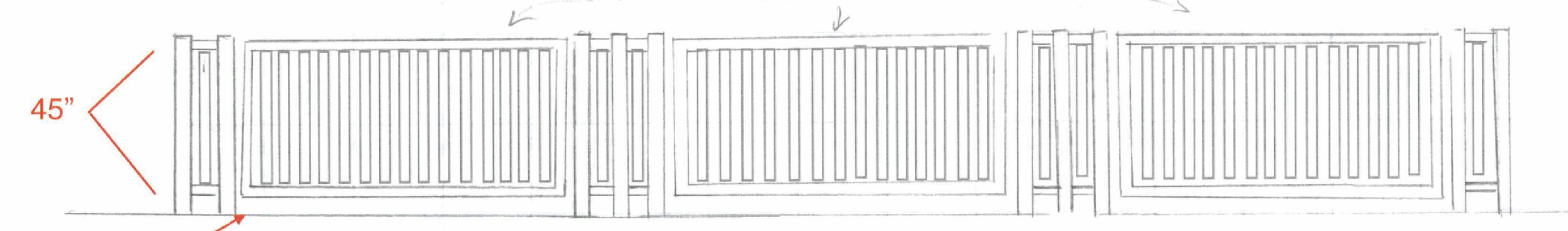
3 Project North
1/4" = 1'-0"

SOUTH ELEVATION (SIDEWALK VIEW)

5" OC, 3.5" spacing, match existing porch



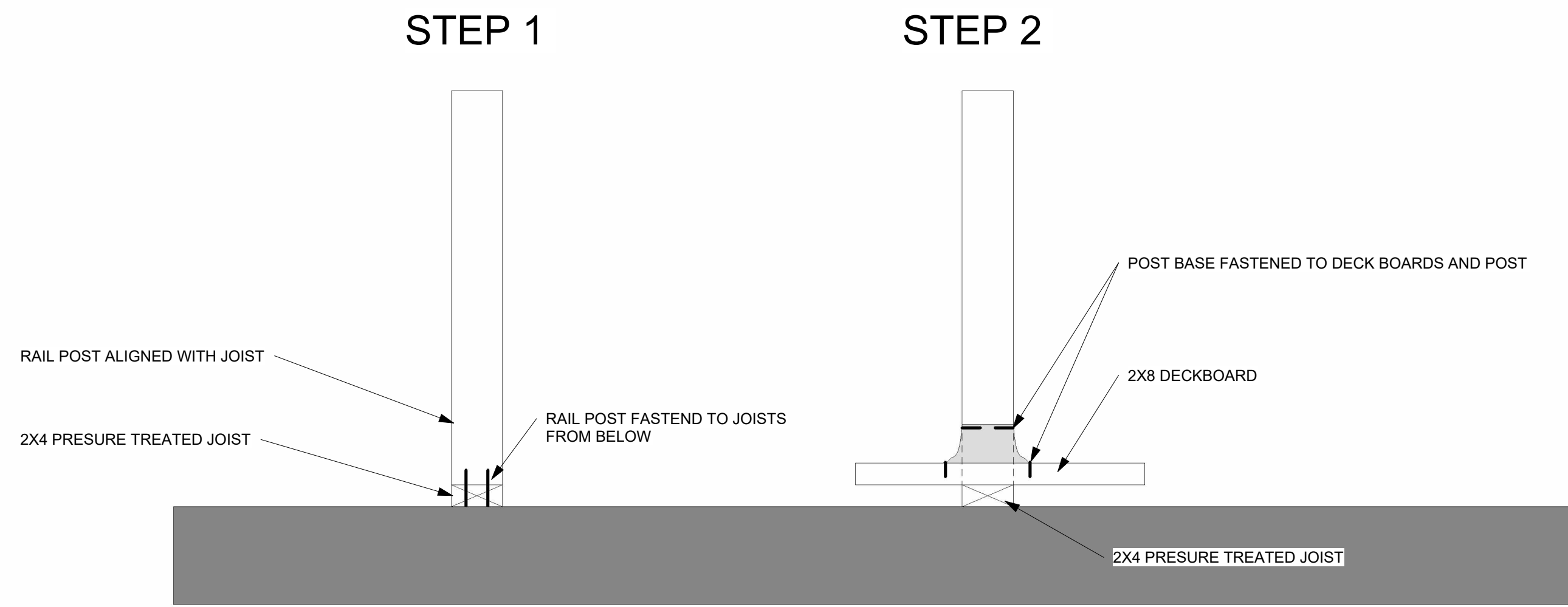
NORTH ELEVATION (STREET VIEW)



3 3/4"

This matches current front porch detail, although this can change per SDOT requirements.

RAIL CONSTRUCTION
DETAIL



SPACE JOISTS BACK TO ALLOW CENTER OF POST TO BE 3" BACK FROM EDGE OF DECK FOR POST BASE

EDGE OF SIDEWALK

T POST EXTRA SUPPORT JOIST

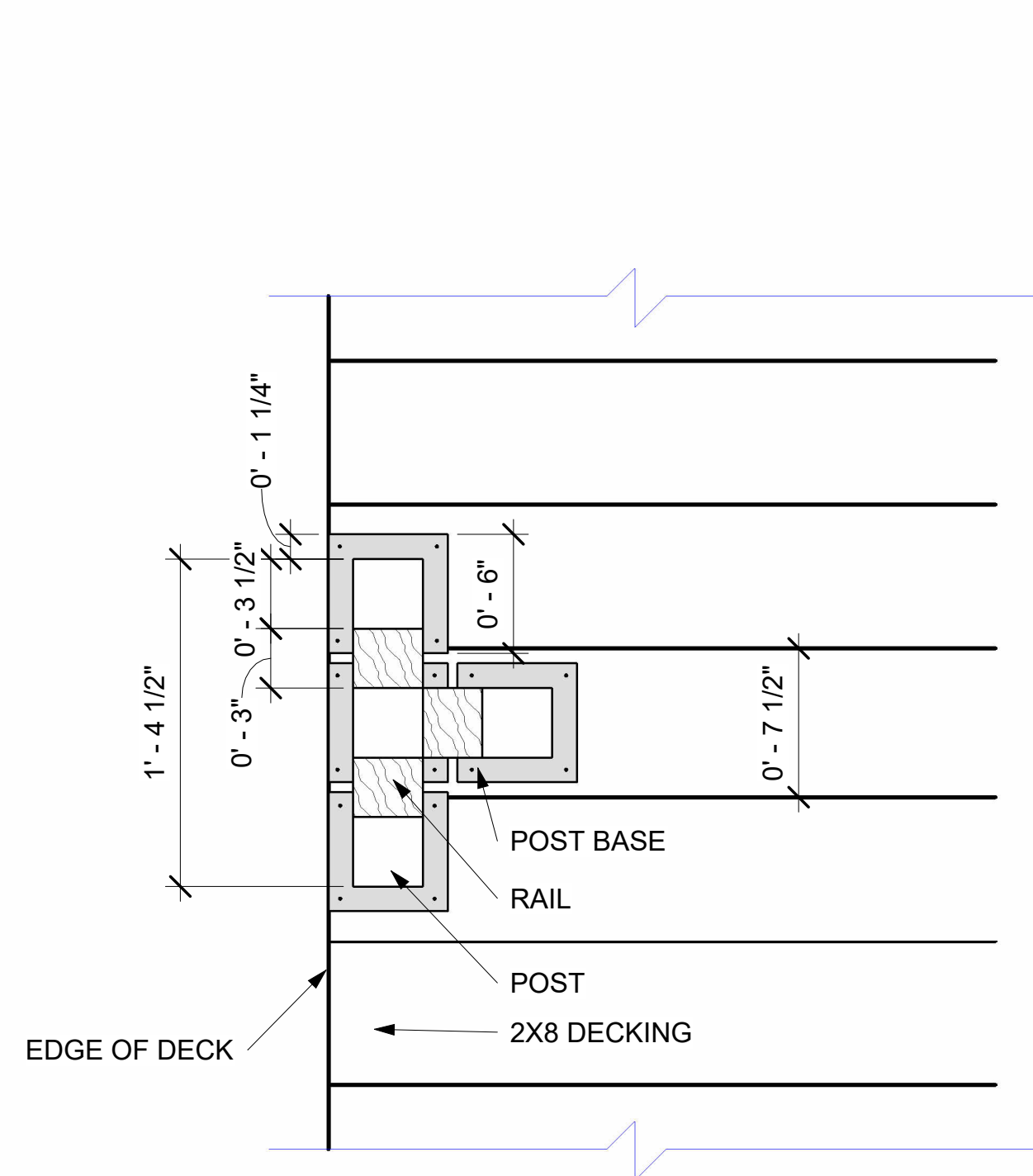
JOIST ALIGNN WITH POST

16" O.C TYP

0'-3"

1 POST BASE
1 1/2" = 1'-0"

2 POST DETAIL
1 1/2" = 1'-0"



3 OVERHEAD T POST DETAIL
1 1/2" = 1'-0"

4 DROP IN PANEL
1 1/2" = 1'-0"

BLACK & WHITE 7' RETRACTABLE UMBRELLA



BLACK ALUMINIUM 36" BISTRO TABLE



CHARCOAL GREY SYNTHETIC RATTAN STACKING CHAIR
SAME CHAIR APPORVED FOR USE ON SAN FERMO DECK



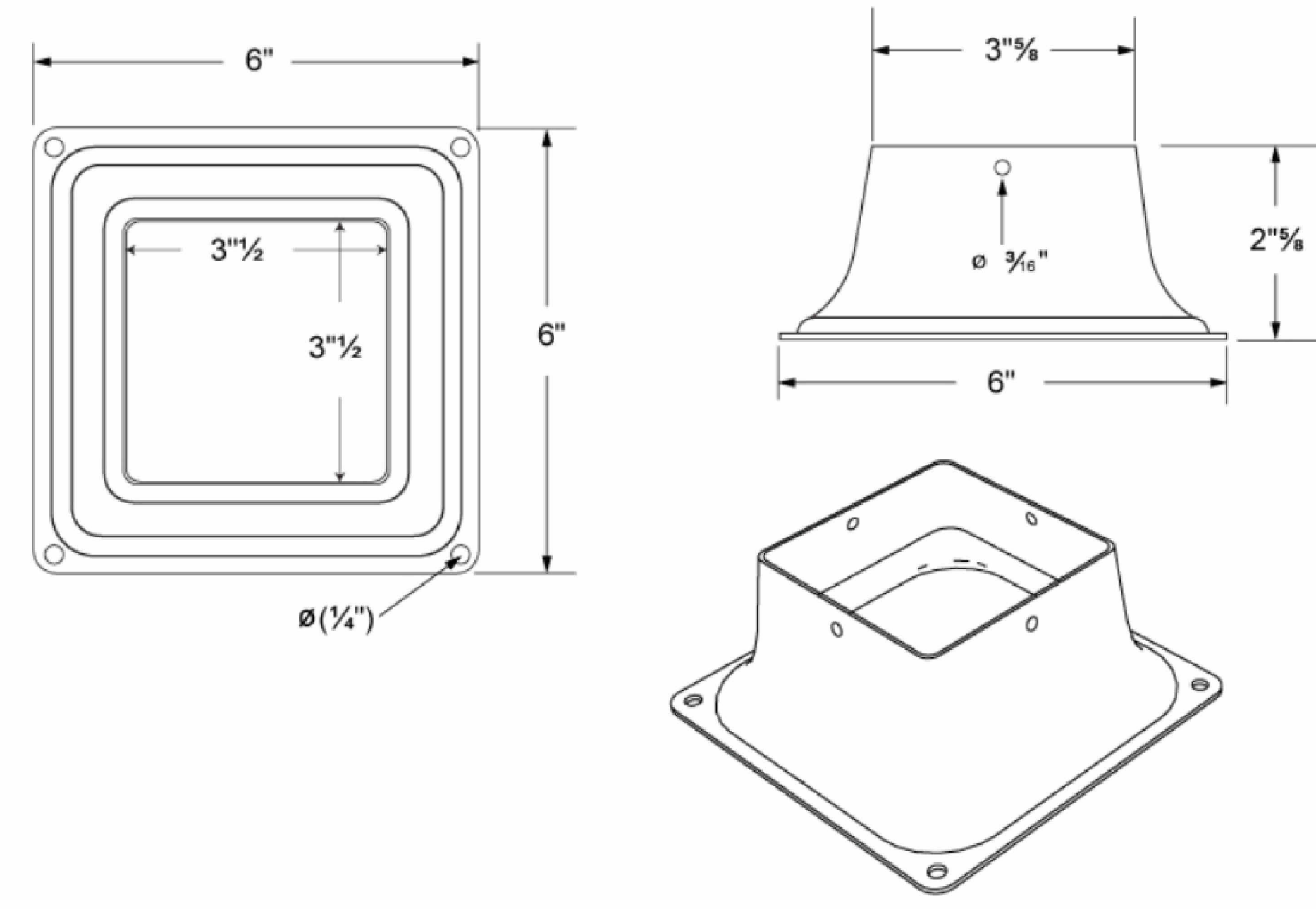
DROP IN PANEL BRACKET



POST BASE

Technical spec. for **Base 44 (White)** No. article

Steel base designed to be used with the FIXPLAK 44 White (



Project Status
4-22-24

www.richardhinerarchitects.com

310.433.4456 TEL
206.763.8222 TEL
206.763.7562 FAX

5337 Ballard Ave NW
Seattle, WA 98107



RICHARD HINER
ARCHITECTS

SAN FERMO STREET CAFE

5341 BALLARD AVE NW, SEATTLE, WA 98107

Auth@hecker

FURNITURE &
MATERIALS
SCALE:

SHEET NUMBER:

A401

OF



EXISTING CONDITIONS
PROJECT EAST



EXISTING CONDITIONS
PROJECT WEST

