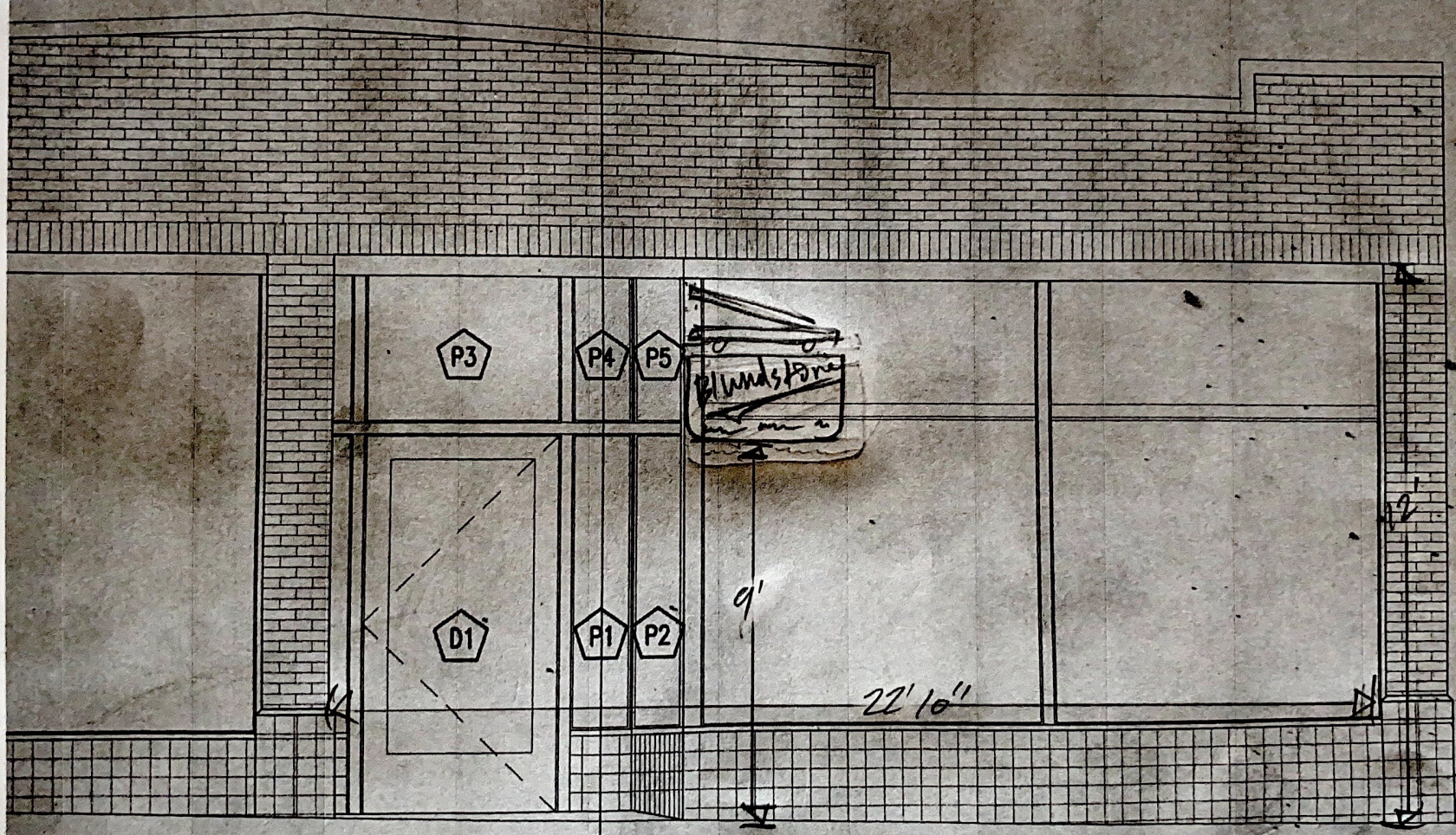




4
A-201

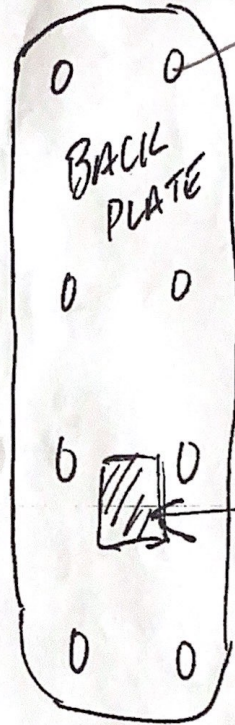


(E) RE
EL. ±

5" x 18" 5/16 steel plate

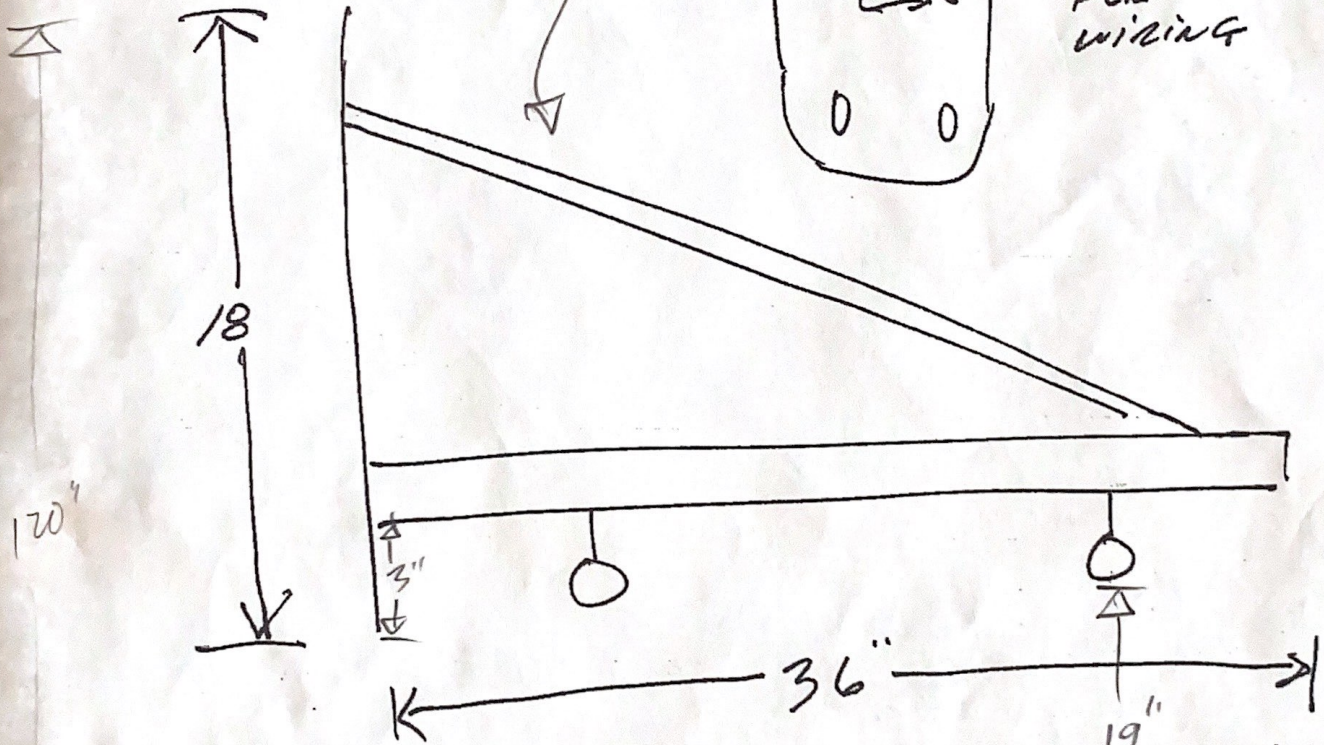
BLUNDSTONE BLADE SIGN

POWDER COATED STEEL

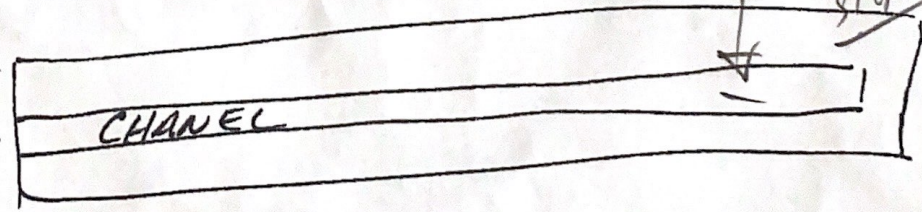
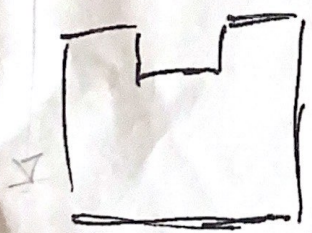


~~5/16" x 2 1/2"~~
85. SLEEVE ANCHORS
OR
~~3/8" x 2 1/2"~~
LAG BOLTS

HOLES FOR WIRING



BOTTOM OF SIGN





Sign: solid oak

Hanger: powder coated steel

Sign dimensions: 37 " x 17 " x 1.5 "