



SKÅL BEER HALL CURBSIDE PERGOLA 5429 BALLARD AVENUE NW

SEATTLE DEPARTMENT OF NEIGHBORHOODS / BALLARD AVENUE LANDMARK DISTRICT BOARD
APPLICATION FOR CERTIFICATE OF APPROVAL
DONH-COA-XXXXX

03 DECEMBER 2025



VIEW OF BUILDING FROM
BALLARD AVENUE, PRIOR TO
CONSTRUCTION OF PERGOLA
(MAY 2019)

- NOTES**
1. PERGOLA PLANS, ELEVATIONS, AND SECTION DRAWINGS ARE SCHEMATIC DESIGN LEVEL ONLY AND HAVE NOT BEEN EVALUATED FOR STRUCTURAL DESIGN
 2. STRUCTURAL ENGINEERING & CONSTRUCTION OF PERGOLA BY OTHERS

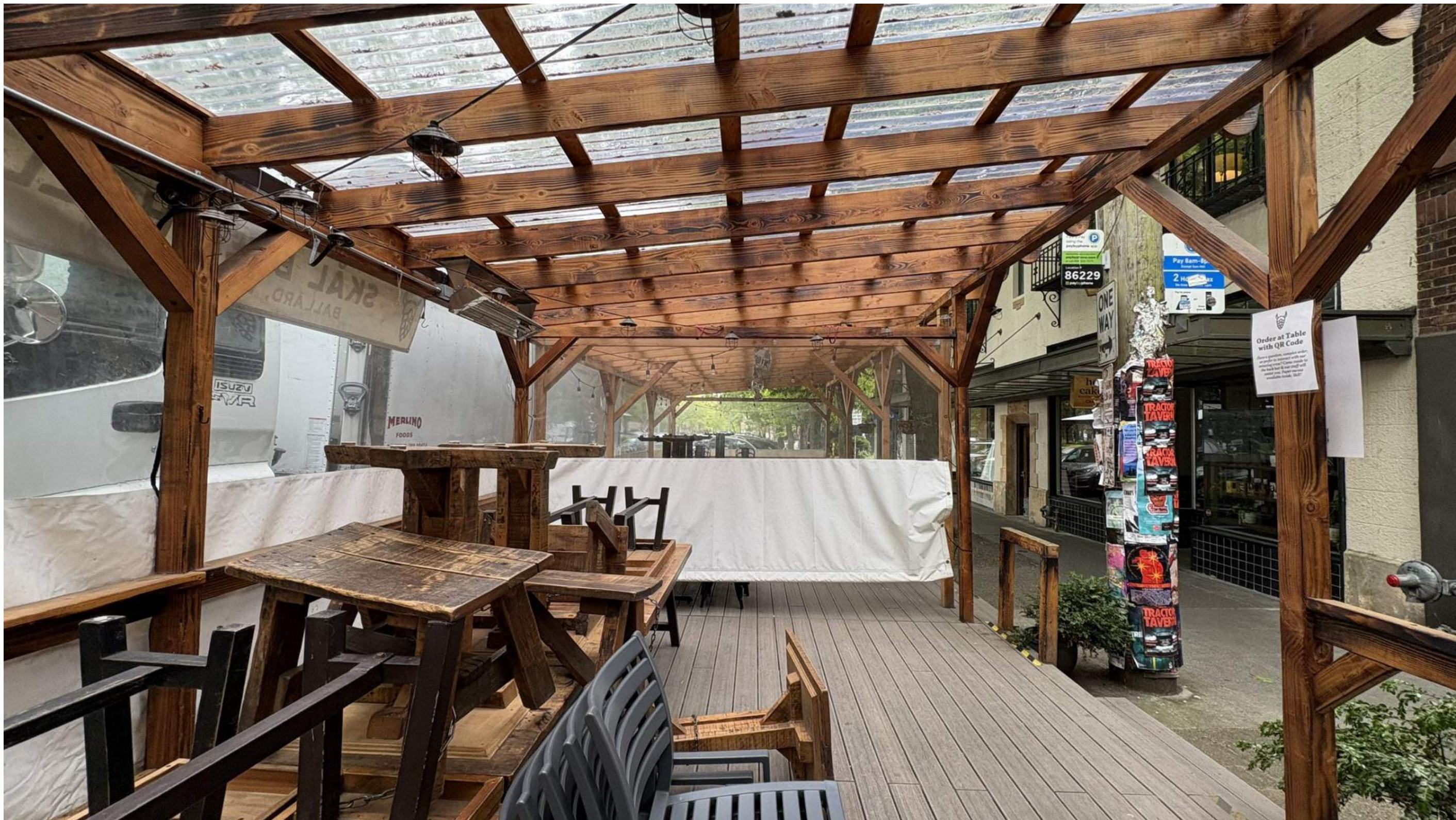
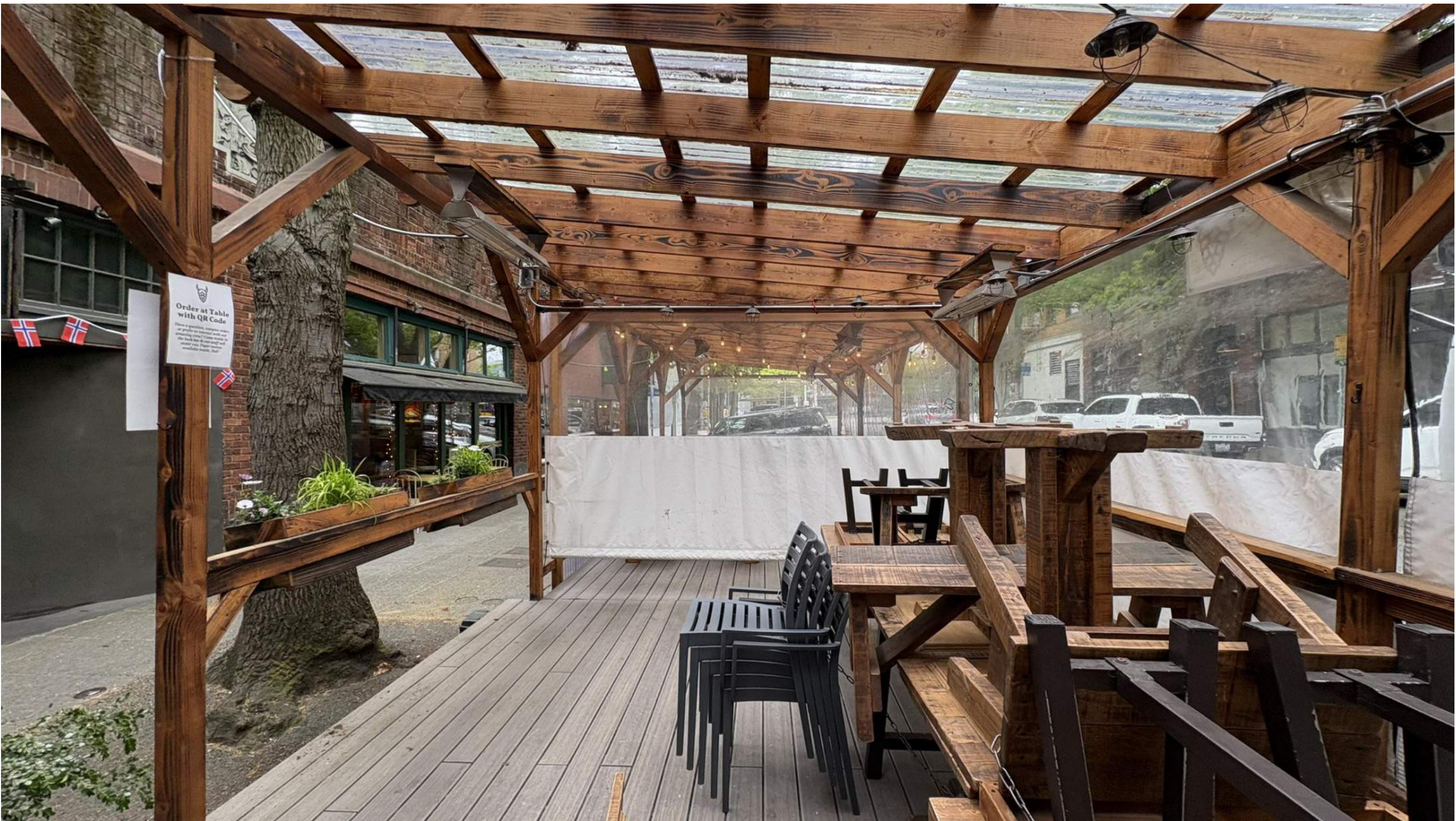
TABLE OF CONTENTS

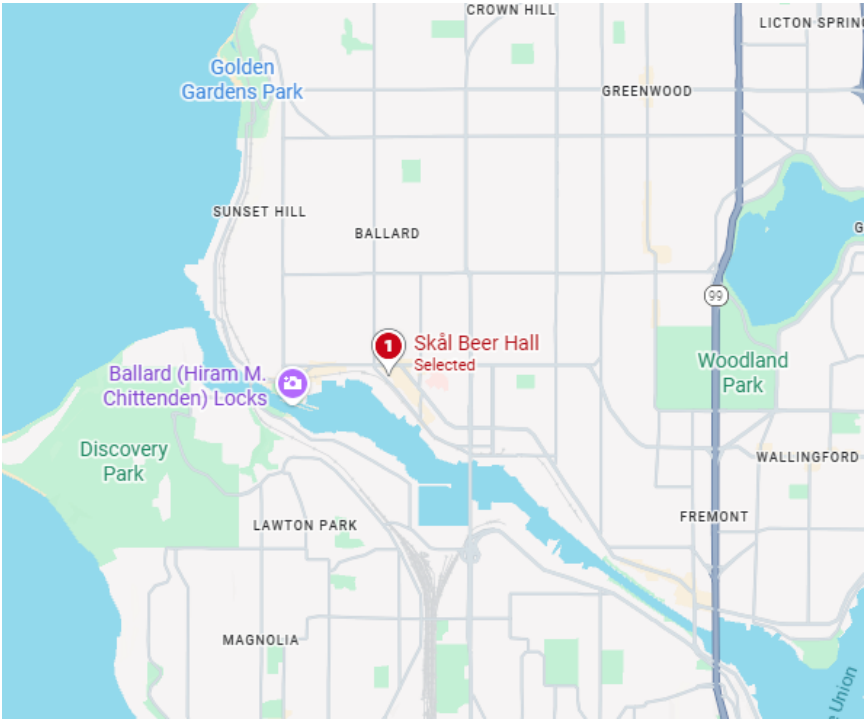
VIEWS FROM BALLARD AVENUE	1A
EXISTING CONDITIONS PHOTOS	2A
SITE PLAN	3A
PLANS	4A
ELEVATIONS	5A
DETAILS	6A
MATERIALS	7A
MATERIALS	8A



VIEW OF PERGOLA AND BUILDING
FROM BALLARD AVENUE

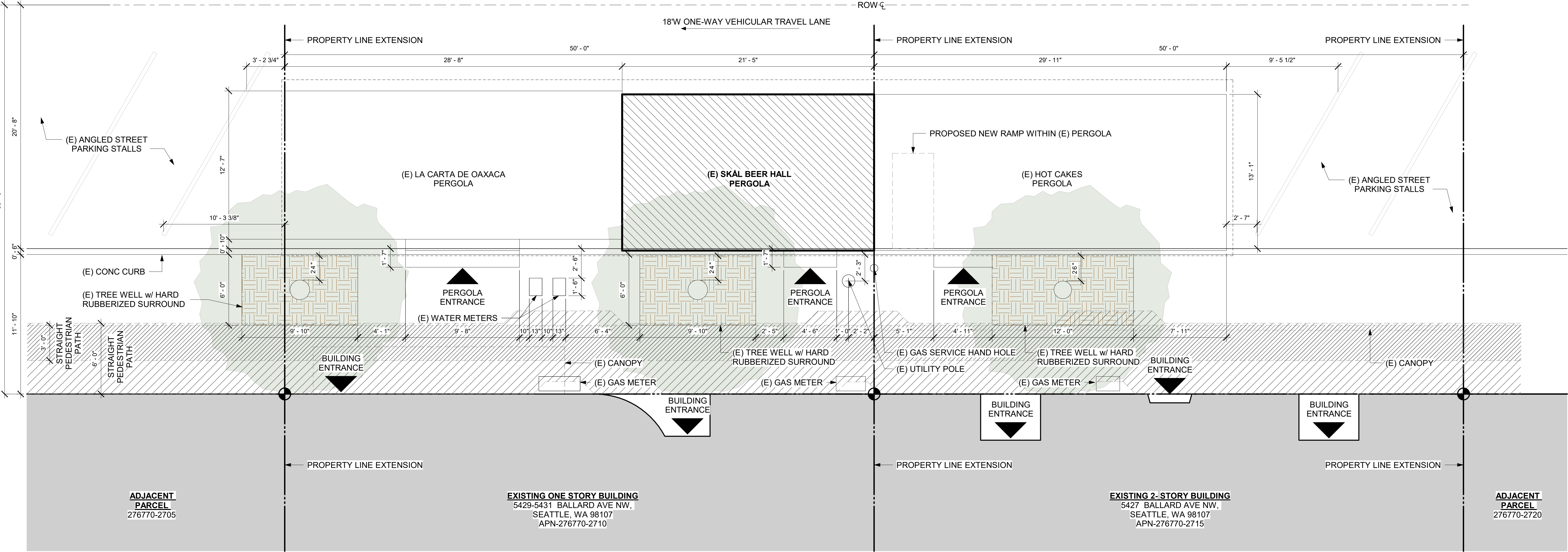
EXISTING CONDITIONS PHOTOS



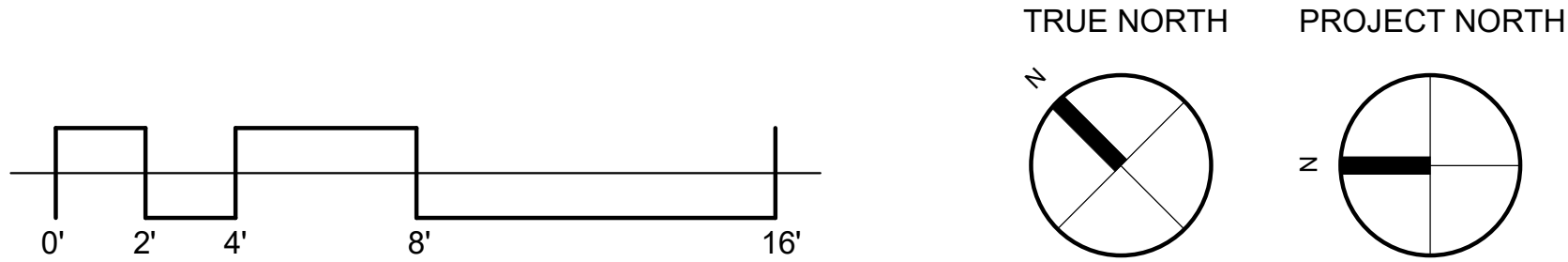


- NOTES**
- 1. PERGOLA PLANS, ELEVATIONS, AND SECTION DRAWINGS ARE SCHEMATIC DESIGN LEVEL ONLY AND HAVE NOT BEEN EVALUATED FOR STRUCTURAL DESIGN
 - 2. STRUCTURAL ENGINEERING & CONSTRUCTION OF PERGOLA BY OTHERS

BALLARD AVE NW

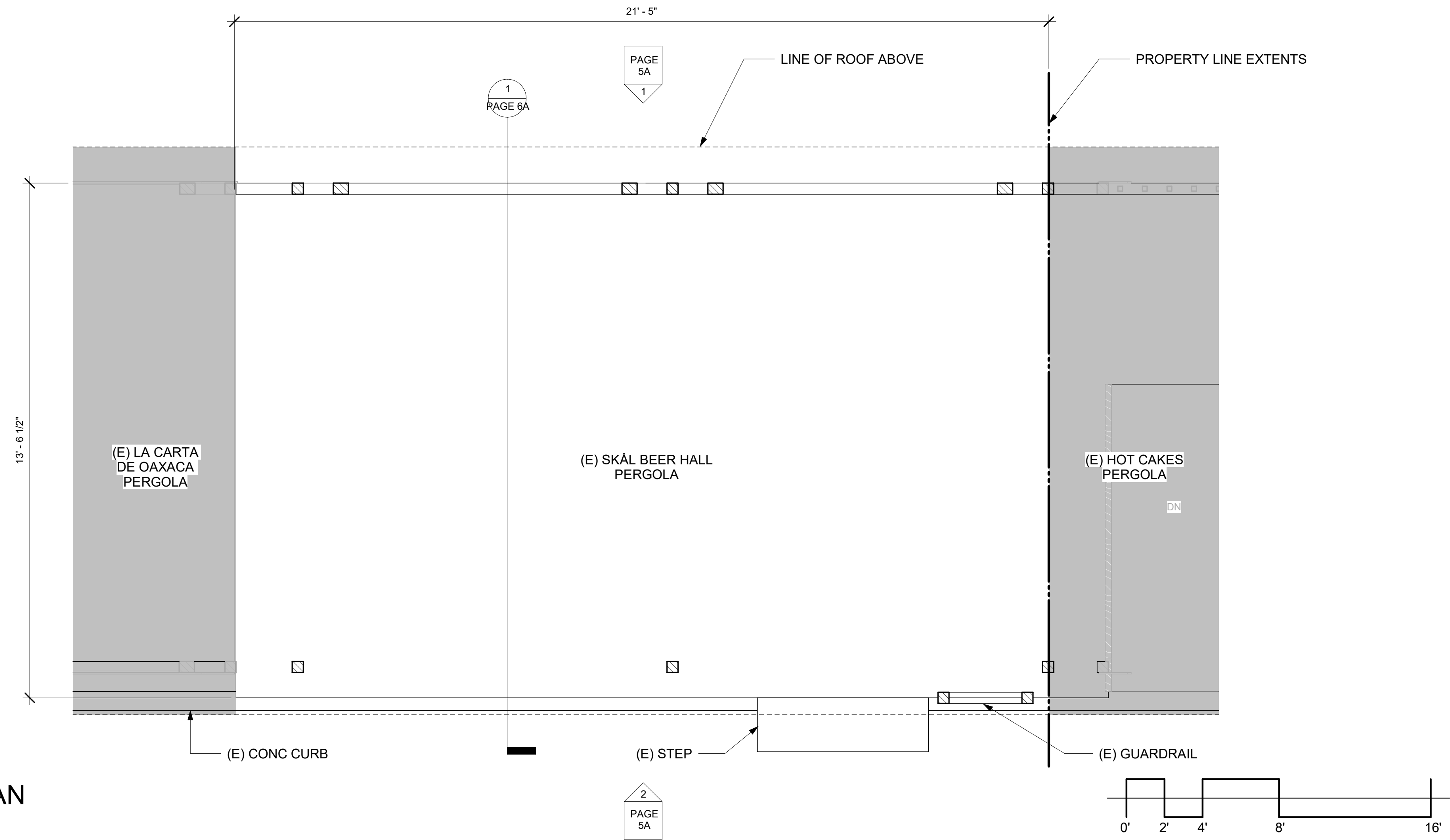


SITE PLAN

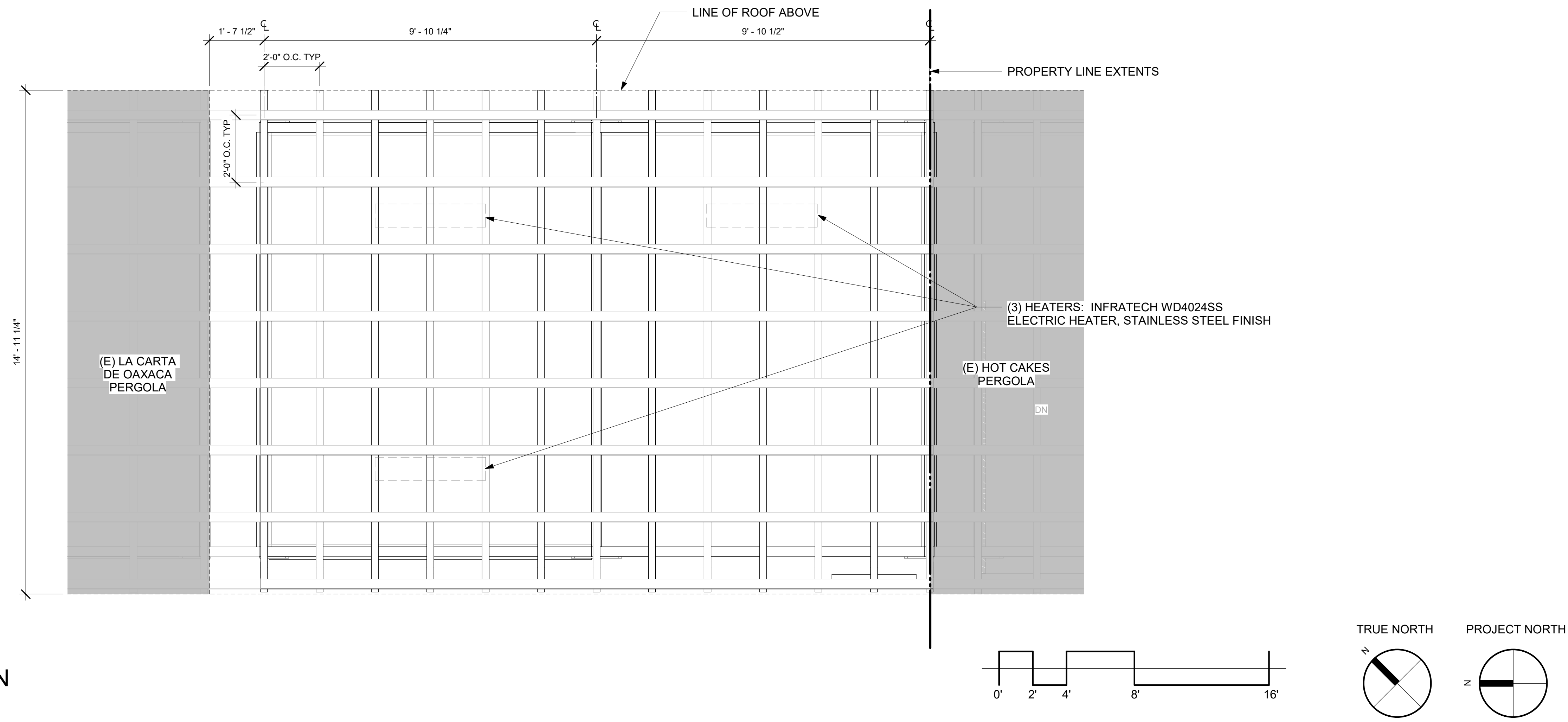


- NOTES**
1. PERGOLA PLANS, ELEVATIONS, AND SECTION DRAWINGS ARE SCHEMATIC DESIGN LEVEL ONLY AND HAVE NOT BEEN EVALUATED FOR STRUCTURAL DESIGN
 2. STRUCTURAL ENGINEERING & CONSTRUCTION OF PERGOLA BY OTHERS

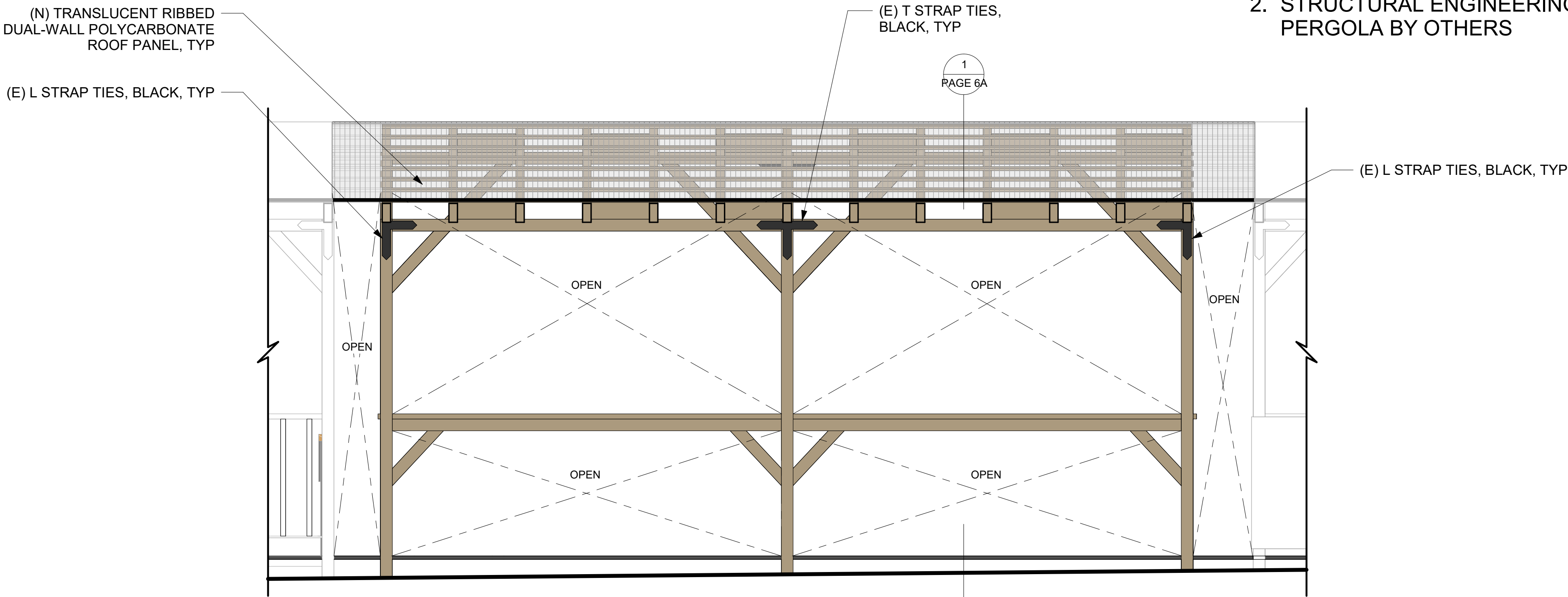
FLOOR PLAN



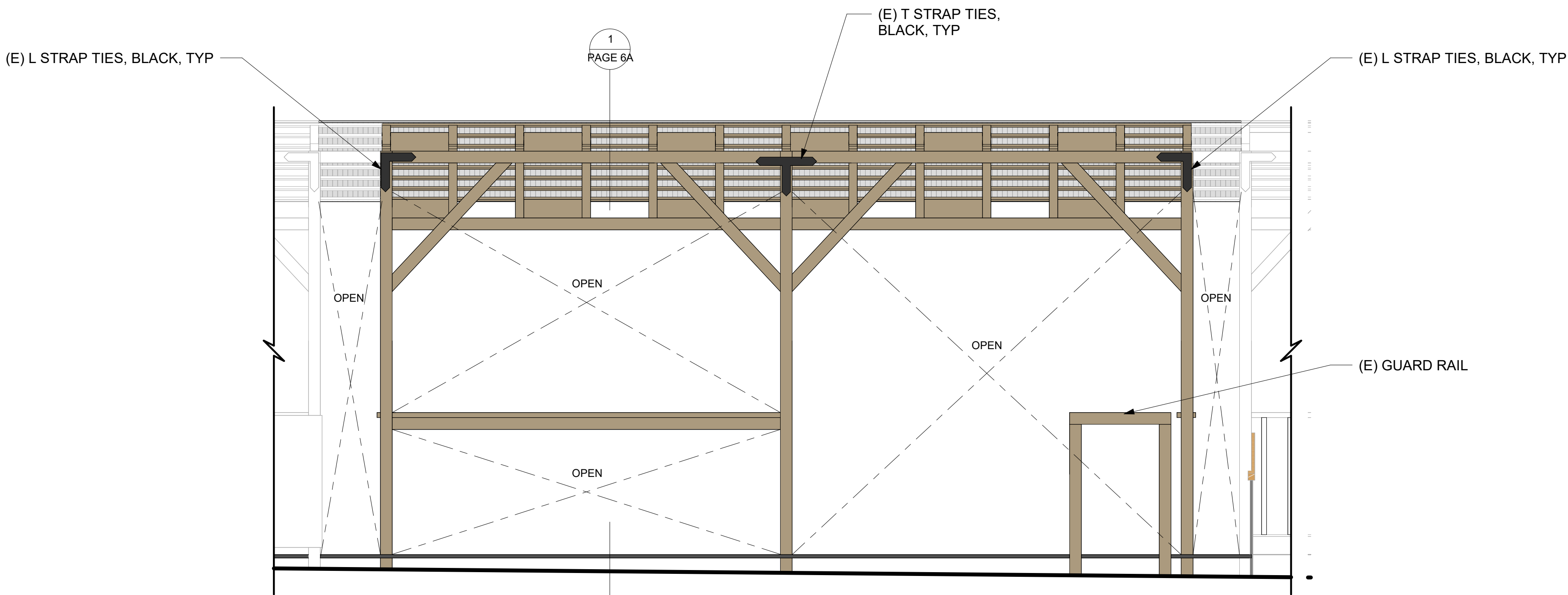
ROOF PLAN



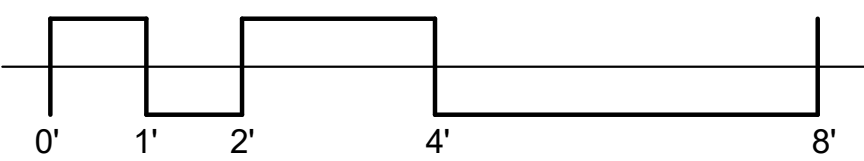
- NOTES**
- 1. PERGOLA PLANS, ELEVATIONS, AND SECTION DRAWINGS ARE SCHEMATIC DESIGN LEVEL ONLY AND HAVE NOT BEEN EVALUATED FOR STRUCTURAL DESIGN
 - 2. STRUCTURAL ENGINEERING & CONSTRUCTION OF PERGOLA BY OTHERS



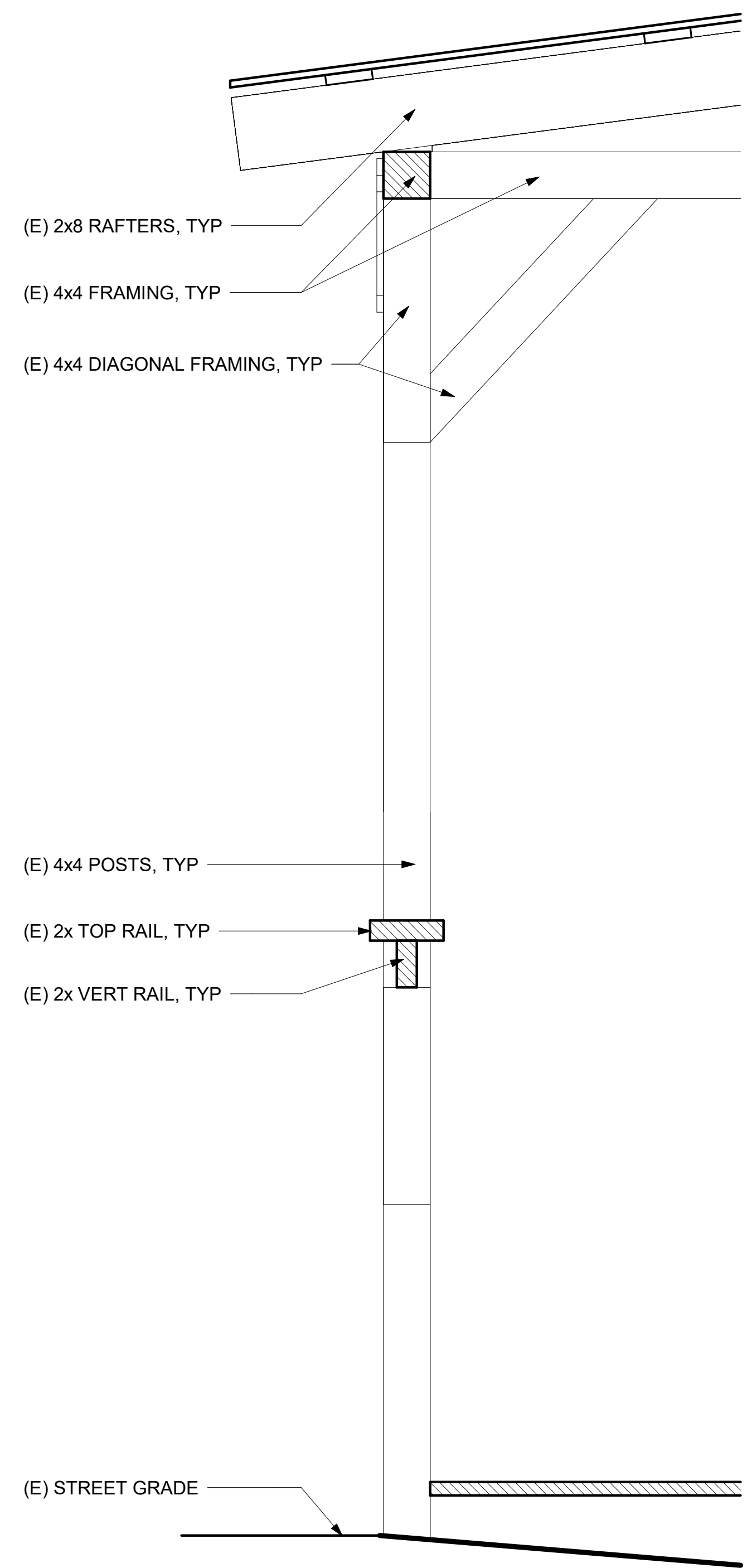
EAST ELEVATION



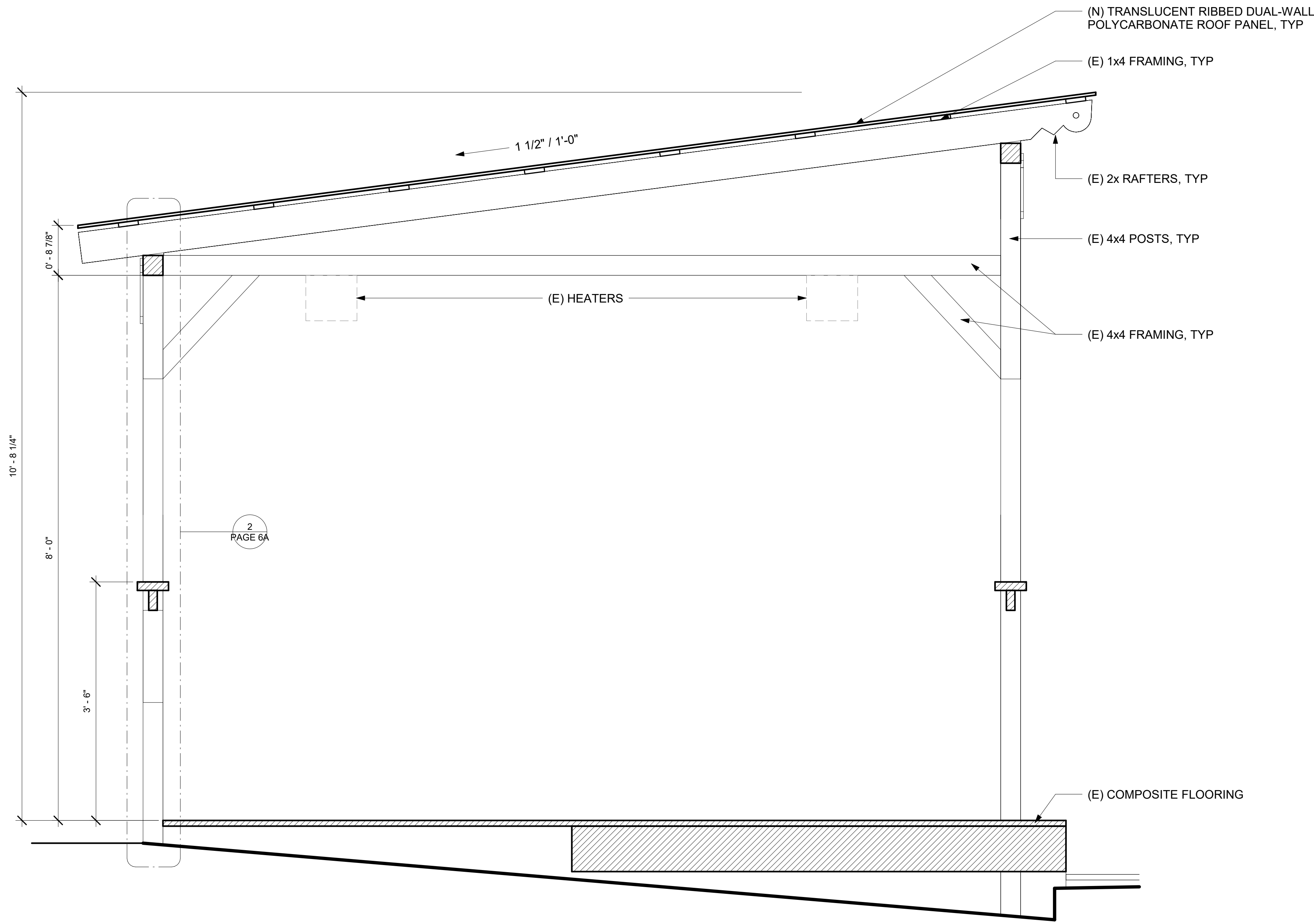
WEST ELEVATION



- NOTES**
- 1. PERGOLA PLANS, ELEVATIONS, AND SECTION DRAWINGS ARE SCHEMATIC DESIGN LEVEL ONLY AND HAVE NOT BEEN EVALUATED FOR STRUCTURAL DESIGN
 - 2. STRUCTURAL ENGINEERING & CONSTRUCTION OF PERGOLA BY OTHERS



FENCE/WALL PANEL DETAIL



SECTION

ROOFING

Location:	Roof
Manufacturer:	Plaskolite
Model:	Polygal Twinwall
Type:	Roofing panels
Size:	48" x 96" panels, 10mm thick
Material:	Double-wall polycarbonate sheet
Color:	Clear, ribbed (79% light transmittance)
Description:	Clear, ribbed polycarbonate roofing panels
Installation:	Panels/ribs span from roof ridge to roof eave, with butt-joints at panel edges. Panels are screwed directly to the pergola's roof structural members with exterior-grade screws and black neoprene washers.
Intended use:	General weather protection for occupants within the pergola structure. Material is clear to allow for daylighting within the pergola, but includes internal ribs which obscure views through the material.
Physical sample:	12" x 12" physical sample to be provided to the Landmarks Board for review.



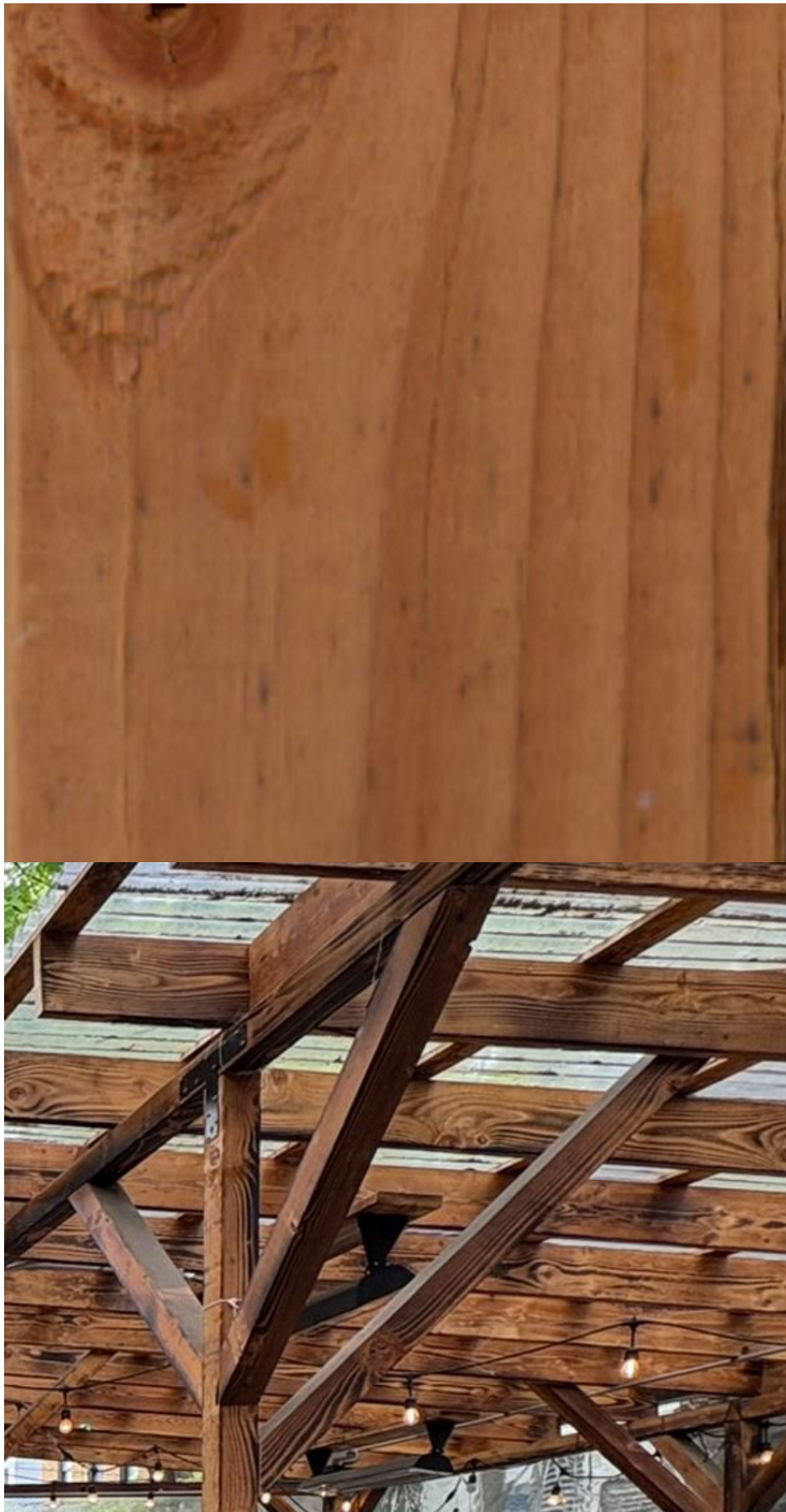
FLOORING

Location:	Floor
Manufacturer:	Trex
Model:	Enhance
Type:	Composite deck boards
Size:	48" x 72" panels
Material:	Composite recycled plastic and sawdust
Color:	Havana Gold - Brown
Description:	Composite deck boards
Installation:	Screwed to wood floor joists
Intended use:	Provide a flat floor surface above the sloped street paving.
Physical sample:	6" x 12" x 1" physical sample to be provided to the Landmarks Board for review.



FRAMING LUMBER

Location:	Pergola roof structure, wall structure, structural posts, fence panels
Manufacturer:	N/A
Model:	N/A
Type:	Framing lumber
Size:	2x4, 2x6, 2x8, 4x4
Material:	Douglas fir
Color:	Unfinished natural wood with hand-burned finish
Description:	General framing lumber used throughout the existing structure
Installation:	Typical wood-framing throughout structure, connected with galvanized framing nails and black structural plate connectors.
Intended use:	General structural support of the pergola, framing for lower fence panels, framing for removable upper wall panels, structural beams over wall openings, and roof structure.
Physical sample:	1.5" x 3.5" x 12" representative physical sample to be provided to the Landmarks Board for review.



STRUCTURAL FRAMING STRAP

Location:	Post-to-beam connections
Manufacturer:	Simpson Strong-Tie
Model:	APT-4 & APL-4
Type:	Flat T- and L-straps
Size:	8.25" x 13.5" (T-strap) 8.25" x 8.25" (L-strap)
Material:	12-gauge galvanized steel plate
Color:	Black "ZMAX" powdercoat finish
Description:	Black powdercoated metal structural strapping plates for connecting structural posts to structural beams
Installation:	Face-applied to structural posts and beams, and screwed to structural members with black screws.
Intended use:	Structural connections between post and beam members.
Physical sample:	(1) T-strap and (1) L-strap to be provided to the Landmarks Board for review.



FESTOON LIGHTING

Location:	Pergola ceiling
Manufacturer:	Jonathan Y
Model:	N/A
Type:	Festoon lighting
Size:	Lamp bodies & bulbs, approximately 4” diameter
Material:	Vinyl electrical cable, metal lamp bodies and cages, LED bulbs
Color:	Black electrical cable, black lamps, 2700K LED bulbs
Description:	Festoon lighting with 2700K LED bulbs and black metal lamps spaced at 24” along black electrical cable.
Installation:	Hung from metal hooks at wood rafters
Intended use:	General lighting.
Physical sample:	None available.



HEATERS

Location:	At pergola ceiling (3 total)
Manufacturer:	Infratech Heaters USA
Model:	WD4024SS
Type:	Dual Element Electric Heater
Size:	39"W x 8"D x 6"H
Material:	Stainless Steel
Color:	Stainless Steel
Description:	Exterior overhead radiant electric heaters.
Installation:	Hung from pergola ceiling by metal brackets. Power fed from main building by black electrical cable, spanning overhead across the sidewalk.
Intended use:	General heating of outdoor dining during the cooler months of the year. Heaters will be removed and stored during the warmer months.
Physical sample:	None available.

