

# Public Hearing on HUD Federal Grants 2026 Annual Action Plan

Tuesday, December 9, 2025

11:30am – 12:30pm

Seattle City Hall



# Welcome



- This meeting is being recorded.
- Please do not use the chat.

# Agenda

- Success Story: DESC ORCA Center
- Overview of HUD Grants (U.S. Department of Housing and Urban Development)
- 2026 Seattle Funding Plan, HUD Annual Action Plan
- HUD-Funded Partner Presentations
- Public Comment and Questions



HOUSING AND HEALTH  
TO END HOMELESSNESS

# Opioid Recovery & Care Access (ORCA) Center

**December 2025 updates**

## **Presenters:**

Dr. Richard Waters, Medical Director

Kaylene Chung, Director of Outpatient Behavioral Health





# What the ORCA Center Is

---

- DESC's Opioid Recovery & Care Access (ORCA) Center: rapid, compassionate care after overdose
- Located inside the DESC Downtown Behavioral Health Clinic
- Safe, judgment-free space with support available 24/7



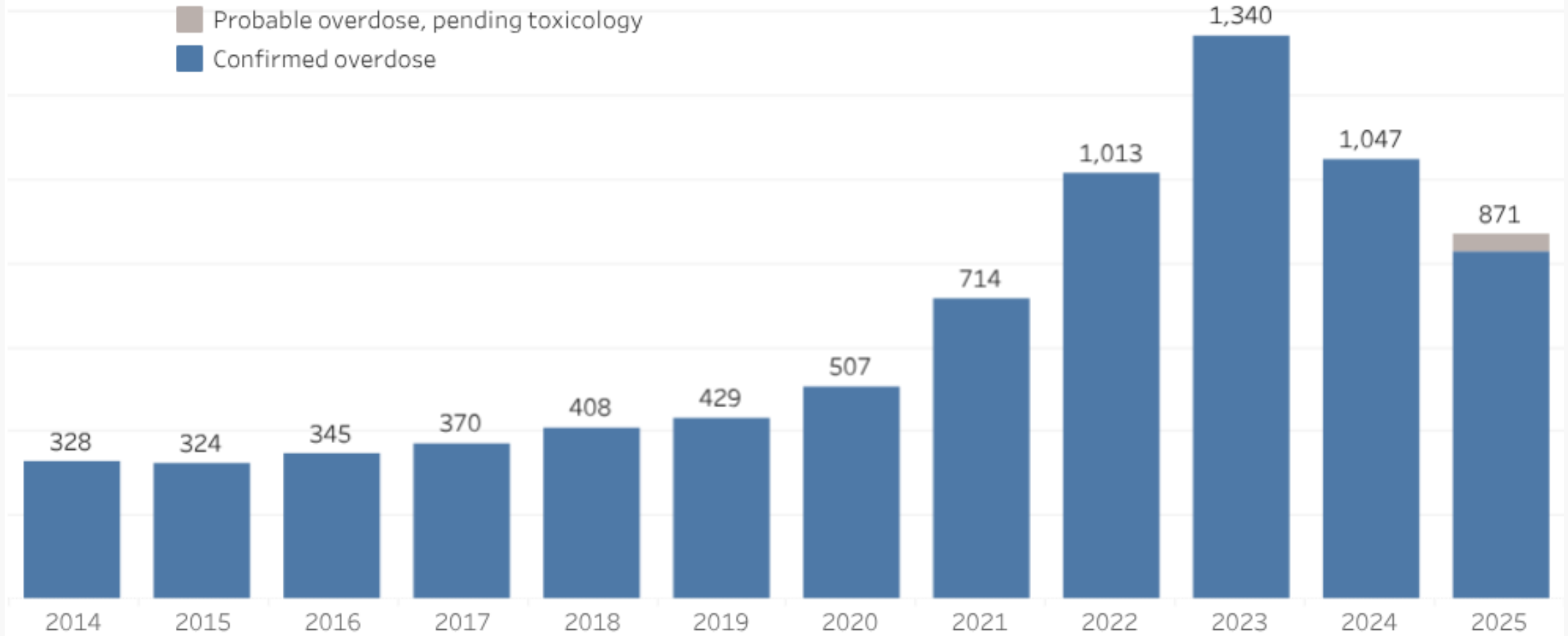
# Why ORCA Center is needed

---

- Fentanyl has driven a dramatic rise in overdoses across King County
- Nearly 30,000 opioid overdose responses by EMS since 2020
- ERs overstretched; limited access to proven medication treatments for opioid use disorder
- Only about 1 in 4 people who need medication treatment receive it

## Annual Trends in Fatal Overdoses in King County

Data source: King County Medical Examiner's Office



<https://kingcounty.gov/en/dept/dph/health-safety/medical-examiner/reports-dashboards/overdose-deaths-dashboard>



## What ORCA Center Offers

- 24/7 post-overdose stabilization for up to 8 people at a time
- Walk-in opioid use disorder treatment daily from 9 am – 11 pm
- On-site medications for opioid use disorder (MOUD): oral & injectable buprenorphine, methadone
- Basic needs: showers, snacks, laundry
- Peer support and medical care
- Connections to ongoing behavioral health care, shelter, and housing navigation



# ORCA Patient Outreach Division (POD)

---

- Formerly DESC's Opioid Treatment Network
- Community-based care delivered to people unable to come to the clinic
- Treatment in shelters and permanent supportive housing
- Supports engagement and retention in treatment for highest-risk clients, some of whom may have first engaged via post-overdose care at ORCA Center



# Impact to Date

---

- ORCA has provided care to over **450 individuals** within first 2 months
- Hundreds engaged with MOUD, recovery services, and stabilization supports
- Strong early outcomes connecting clients with treatment and shelter resources
- Over **700 clients** enrolled in opioid use disorder treatment across DESC's community programs and growing



## Part of the DESC Downtown Behavioral Health Clinic

- The clinic provides integrated, low-barrier behavioral health and basic services
- Located in the Morrison Building
- A person-centered approach supporting mental health, substance use care, medical services, and stabilization

# Fitting into Seattle's Broader Strategy

---

- ORCA Center reduces strain on emergency medical and hospital systems
- Creates strong pathways to long-term care, treatment, and housing
- Supports public health and safety by aiming to reduce repeated overdoses
- Integral part of DESC's comprehensive response, including permanent supportive housing



# Vision for the Future

---

- Continued expansion of access to MOUD and stabilization services
- Strengthening the ORCA POD model to reach more people where they are
- Deepening integration across DESC housing, clinical, and crisis programs
- Building long-term care pathways that support stability and recovery



# Made Possible Through Partnership

---

The ORCA Center is a community effort with capital funding provided by the **City of Seattle (via CDBG funds), King County**, Washington State, and a generous private donor.

Key partners include **UW ADAI, King County Behavioral Health and Recovery Division, Public Health** – Seattle & King County, the **Seattle Fire Department** and **Evergreen Treatment Services**.

Funding for operations comes from **government partners (City of Seattle, King County, Washington Health Care Authority)** and **Medicaid** reimbursements.

# Proposed use of HUD Grants in 2026

## \$18 million (est.)



# 2026 HUD Grants to Seattle

- \$8.9M (est.) – Community Development Block Grant (**CDBG**)
- \$2.85M (est.) – Home Investment Partnerships (**HOME**)
- \$796K (est.) – Emergency Solutions Grant (**ESG**)
- \$3.75M (est.) – Housing Opportunities for Persons with AIDS (**HOPWA**)





# 2026 CDBG Proposed Budget Allocations\*

Select Programs	Proposed Allocation
KCRHA **: Address Homelessness	\$3,178,870
Community Facilities	\$1,692,332
Parks Upgrade Program	\$808,000
Ready to Work Program	\$700,000
Aging and Disability Services: Minor Home Repair	\$500,000
Opioid/Fentanyl Treatment Facilities	\$500,000

*\* Final amounts dependent on FY26 final HUD funding amounts and final city FY26 budget*

*\*\* King County Regional Homelessness Authority*



# KCRHA: Address Homelessness

- CDBG, \$3,178,870 (est)
- ESG, \$768,747 (est)
- *479 units of shelter*
- *45 rapid rehousing households*

## Supported Projects

Willow Street Enhanced Shelter

Angeline's Enhanced Shelter

YWCA Rapid Rehousing

Lighthouse at SODO Shelter

Inn at Roy Street Shelter

# KCRHA: Address Homelessness

**Program Outcomes: January 1, 2024 to December 31, 2024**

Supported Projects	Average Length of Stay (Days)	% Exits to Temporary or Permanent Destination
Willow Street Enhanced Shelter (families)	135	86%
Angeline's Enhanced Shelter (single women)	156	22%
YWCA Rapid Rehousing Housing Stability Program	320	86%
Lighthouse at SODO Enhanced Shelter (single adults)	299	37%
Inn at Roy Street Shelter (basic shelter)	104	4%

# Healing Happens in Community

ETS Health & Recovery Campus

**December 9, 2025**

Steve Woolworth, CEO







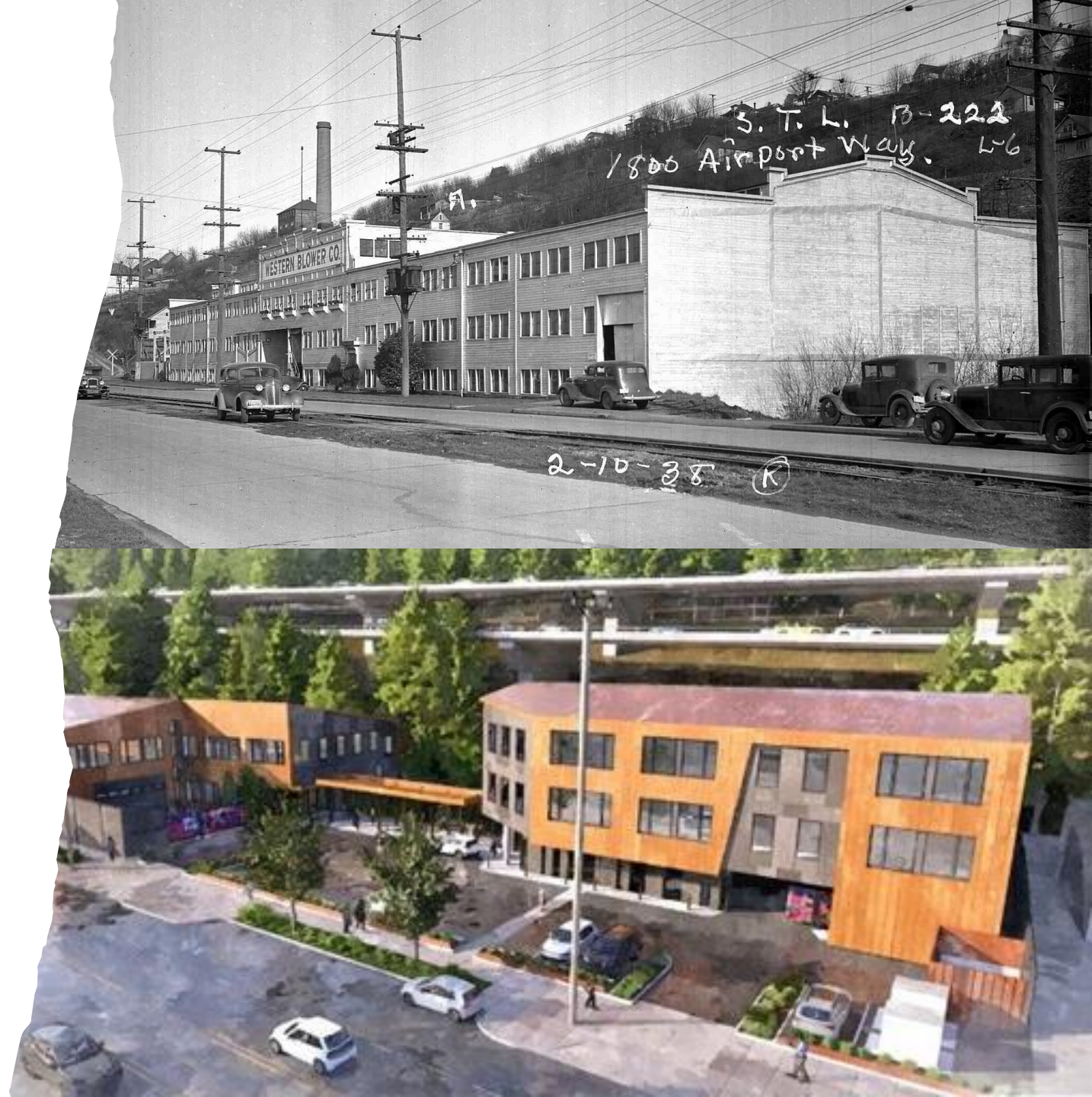
# ETS: Where Healing Happens

- ETS Mission: Transforming the lives of individuals and their communities through innovative and effective addiction and social services.
- Trusted, long-standing provider of substance use treatment and street-based outreach to community members in Western Washington since 1973.
- Serve more than 13,000 individuals annually, many navigating homelessness, trauma, and substance use disorder.
- Follow a healing-centered approach and aims to keep people who use drugs as safe and healthy as possible



# Healing Happens in Community

- Redeveloping our largest clinic into a full Health & Recovery Campus
- Building a modern, accessible, and compassionate environment built to promote healing
- Expanding access to life-saving opioid treatment services through mobile and place-based treatment programs
- Increase ETS's capacity to reach our neighbors at the farthest margins of our communities and connect them to what they need most



# Building Capacity to Meet Increasing Community Needs

- Seattle has the third largest unhoused population in the U.S ([source](#)).
- Region continues to experience devastating effects of the opioid epidemic—now worsened by fentanyl and other synthetic opioids.
- Synthetic opioids contribute to nearly 70% of overdose deaths ([source](#)).
- In 2024, King County had 1,080 fatal overdoses, the second-highest year on record ([source](#)).
- After a non-fatal opioid overdose:
  - 1 in 20 people die ([source](#)).
  - 1 in 4 experience another overdose within a year ([source](#)).
- Less than half of people who need behavioral health treatment receive it ([source](#)).
- Systemic inequities—including trauma, racism, poverty, unaffordable housing, and lack of mental health access—continue to drive homelessness and substance use.

# Recovery is Possible

- Medications for opioid use disorder (MOUD)—including methadone and buprenorphine—reduce opioid overdose mortality by approximately 50-80% ([source](#)).
- Patients receiving MOUD have 26-32% fewer serious opioid-related acute care events than those not in treatment ([source](#)).
- Integrated care adds an additional ~14% reduction in emergency department use ([source](#)).

*This isn't about a new building. It's about what happens inside: the first hand someone holds after release from jail or a hospital stay; the first cup of coffee shared in safety; the first time in years a person believes they belong somewhere again.*





# Project Details - Phase 1

## Dispensary and Stationhouse

- Opioid Treatment Clinic with counselors, medical providers, and a walkup dispensary
- Treatment in Motion fleet of four mobile methadone units

## Welcome Center

- Treatment intake and patient engagement
- Care navigation and recovery support services

## Integrated Care

- Primary care, behavioral health, and substance use disorder treatment all under one roof





# Impact



Serve hundreds more people



Reduce fatal drug overdose



Increase access to a continuum of critical services



Enhance quality of care through innovative partnerships



Bring people inside and offer a safe community gathering space



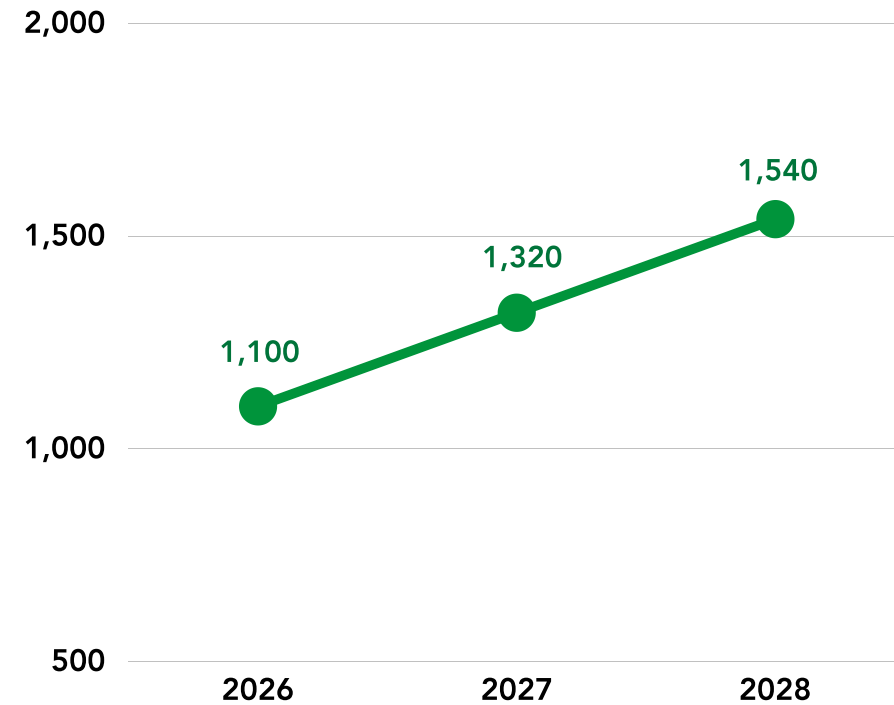
Lower the overall cost of care by reducing the use of emergency services





# A campus for care. A community for healing.

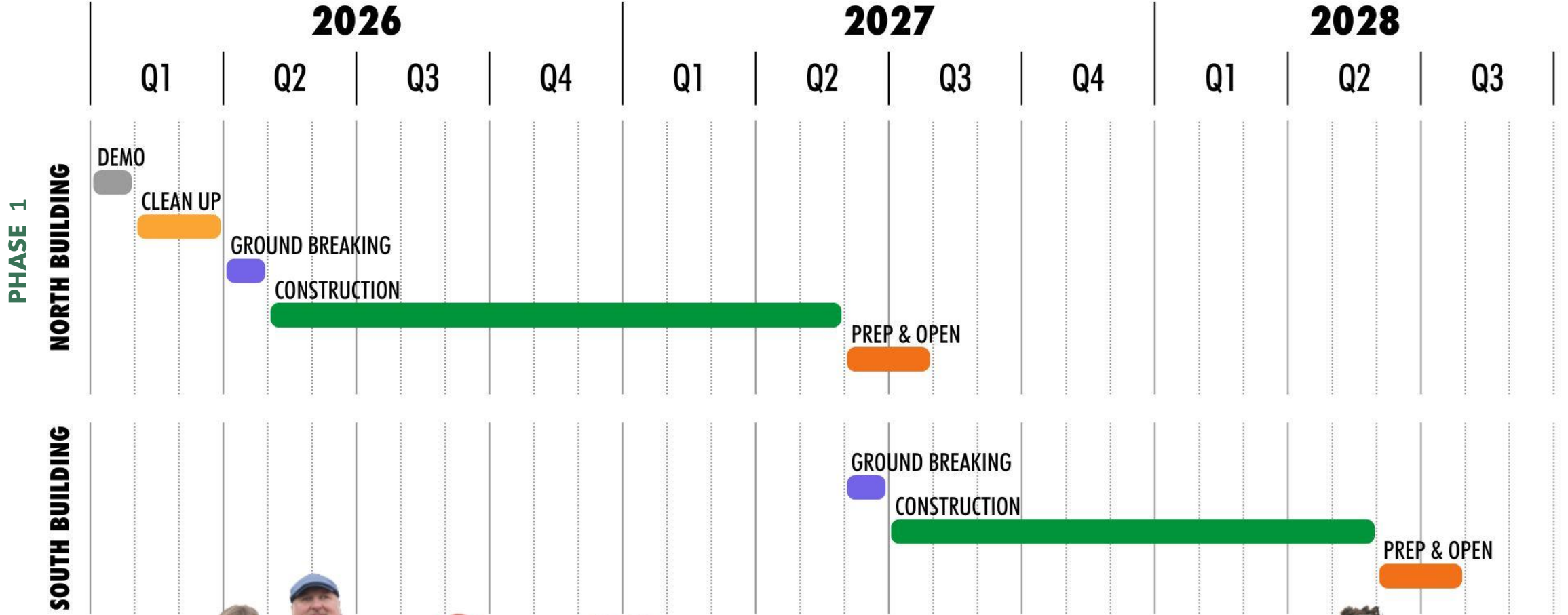
## PEOPLE TO BE SERVED AT 1700 AIRPORT WAY



**40% INCREASE IN THE  
FIRST THREE YEARS (est)**



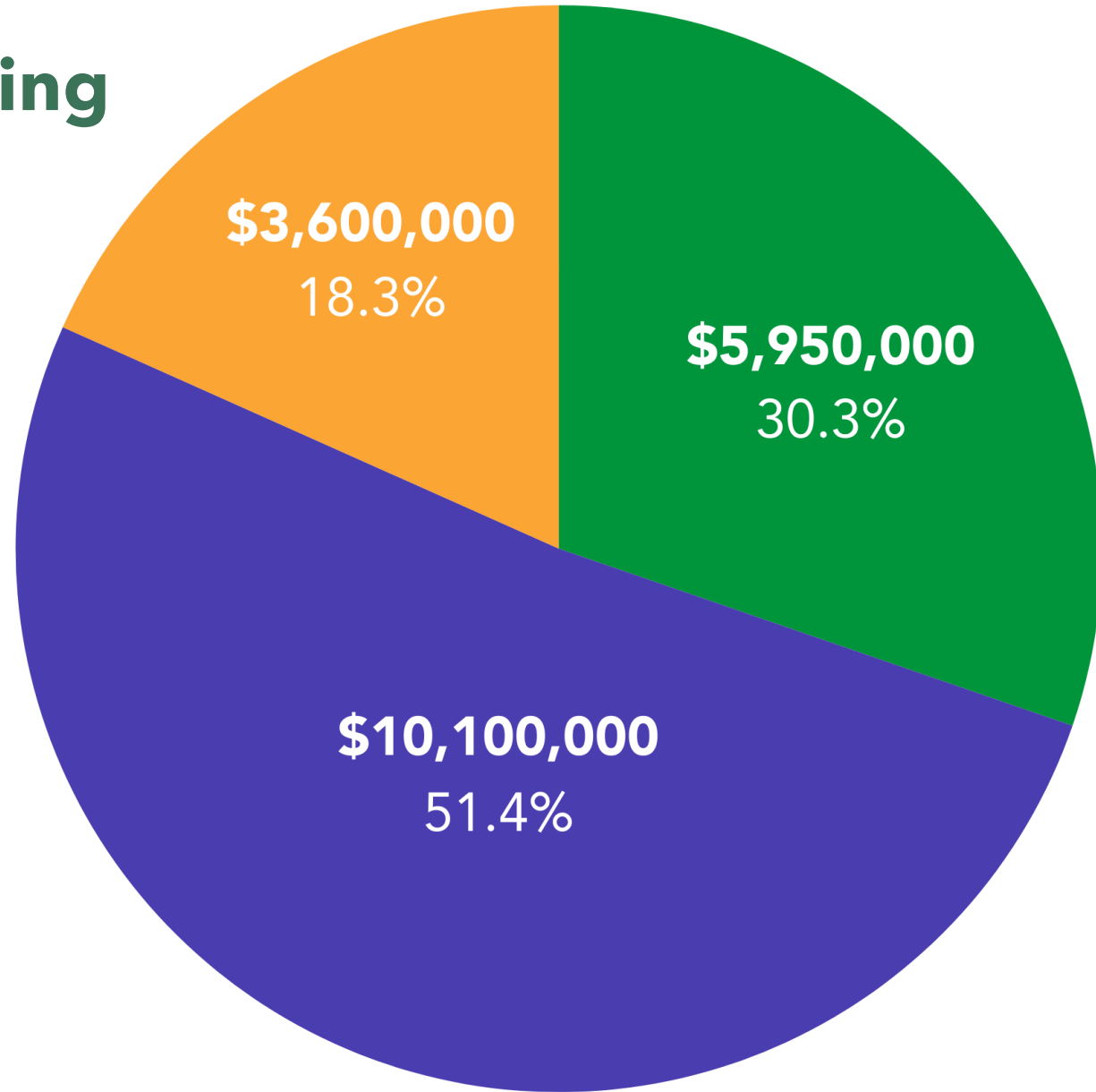
# Estimated Timeline



# Phase 1 - North Building Project Funding

**\$19.65M**

- Commerce (State)
- Private Philanthropy
- CDBG (City) (2022-2026)



# Key Partners



**CHIEF  
SEATTLE  
CLUB**



**Seattle**  
Human Services



**Public Health**  
Seattle & King County



Business Improvement Area



Washington State  
Department of  
**Commerce**

**UW Medicine**

HARBORVIEW  
MEDICAL CENTER



# Thank You City of Seattle

*When you invest  
in ETS, you're not  
funding walls — you're  
funding a threshold:  
the place where someone's  
story changes direction.*



# Seattle Parks and Recreation

Park Upgrade Projects (PUP)  
*Presented by Sacha Wyatt,  
Capital Projects Coordinator*







Cheasty Blvd PUP







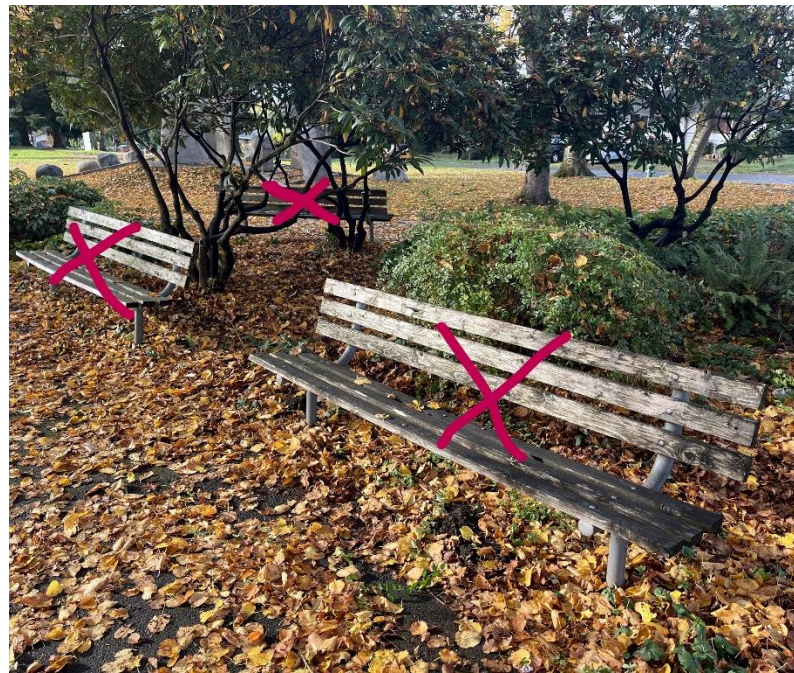
Cheasty Blvd PUP





Benefit Park PUP

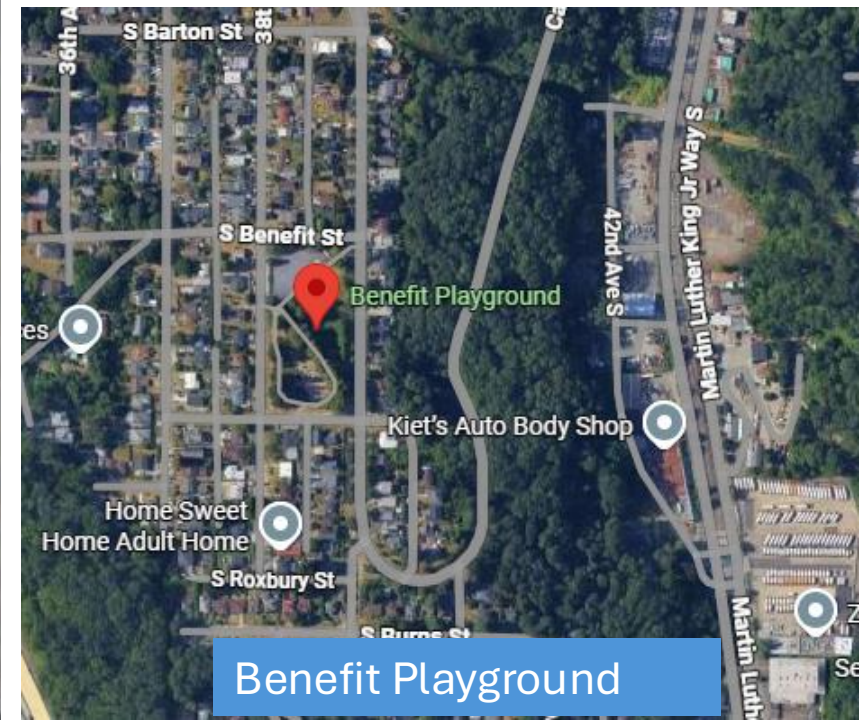
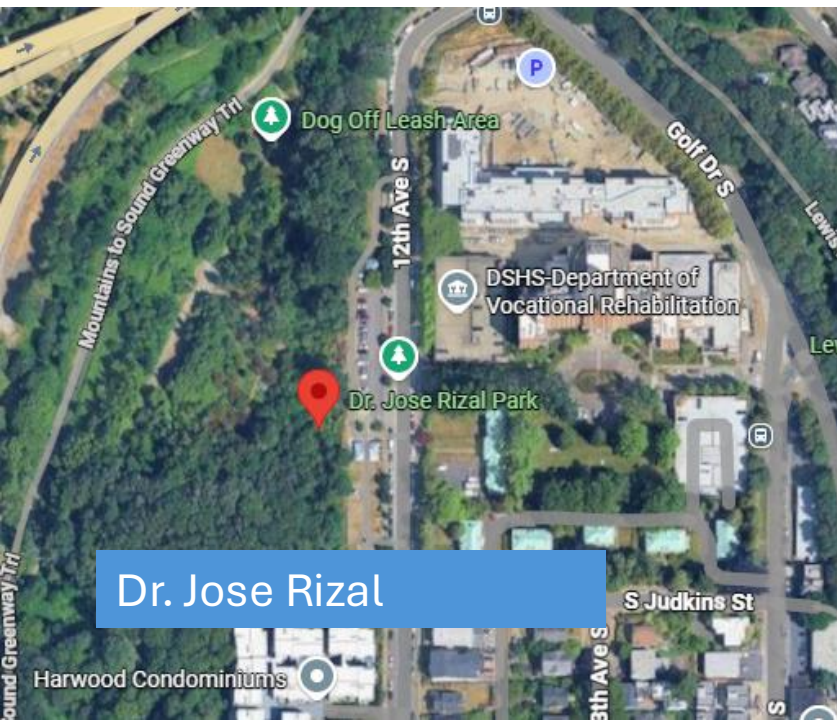




Benefit Park PUP









# Office of Immigrant & Refugee Affairs (OIRA) Ready to Work Program

Jena Yang





# Ready to Work Program



# Ready to Work Program





# Ready to Work Program



# Ready to Work Program's 2025 Successes



- Additional workshops for participants
- 3 educational field trips
- Currently total 181 students completed classes (72% completion rate)
- 46 placed jobs



# Ready to Work Program 2026



- Standardized hybrid classes
- Curriculum topics for 2026
- Seattle labor laws workshop for the participants with OLS
- RFP for 2027

# Minor Home Repair



The Minor Home Repair (MHR) program completes home maintenance, repairs, and modifications for low to moderate income Seattle homeowners who are 60+ and/or adults with disabilities.



**Seattle**  
Human Services

Equity • Support • Community



# Minor Home Repair





# Common MHR Services



Health & Safety	Plumbing
Install grab bars & handrails	Unclog drains
Check, install CO and smoke detectors	Fix pipes & faucets with leaks
Home Health & Safety Evaluations	Install ADA toilets

Carpentry	Electrical
Repair rotted & unsafe steps, porches	Replace light bulbs, outdoor security lights
Install locks & deadbolts	Replace broken switches, sockets, fixtures

# 2026 City Funding

- HUD CDBG Funds - \$500K
- Seattle General Funds - \$153K

**Zero cost to clients**  
**\$\$\$**



# Before & After

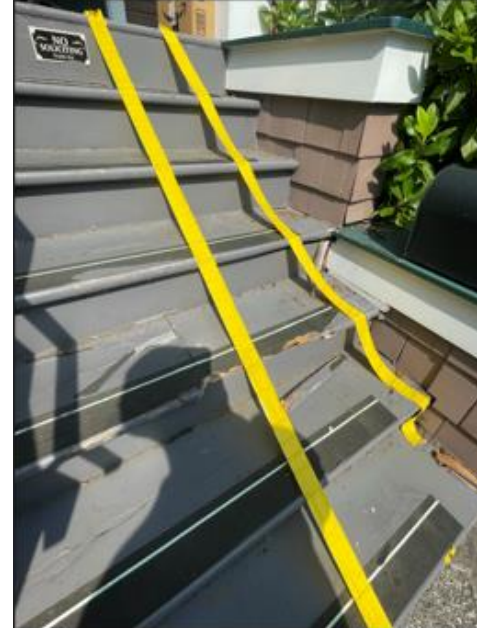
**Missing Railing**



**Installed Railing**



**Unsafe Entryway**



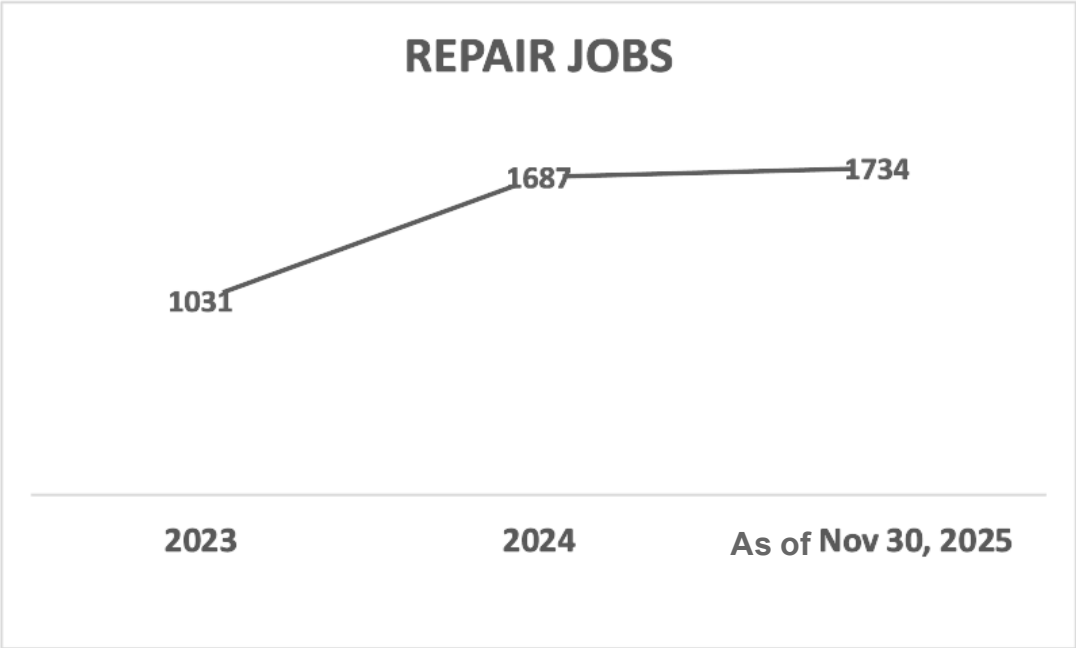
**Safe Entryway**





# Program Results

Serves 300+ Seattle Households Annually



# What Seattle Homeowners Say





# Office of Housing and HOME Funds

## Chief Seattle Club Sweetgrass Flats



\$2.15M HOME Investment (\$19.7M total)

# Office of Housing and HOME Funds

\$2.85M (est)

- 2026 HOME Funding Plan
  - Supports OH's mission to create and preserve affordable homes.
  - At least 11 units funded with 2026 HOME allocation.
  - HOME pairs with local dollars to strengthen feasibility and deepen affordability.
  - Key federal resource for producing long-term, income-restricted housing.



# Housing Opportunities for Persons With AIDS

\$3.75M (2026) + \$650K (2025) = \$4.4M (est)

- Catholic Community Services - \$290,975
- Virginia Mason Bailey Boushay House - \$3,191,400
- People of Color Against AIDS Network (POCAAN) - \$620,755
- Center for Multicultural Health Services (CMHC) - \$233,170

**Clients to be served – 300 (est)**

# Community Facilities Capital Projects

## Denise Louie Education Center – Beacon Hill

Two Awards: 2003 - \$220K

2021 - \$430K

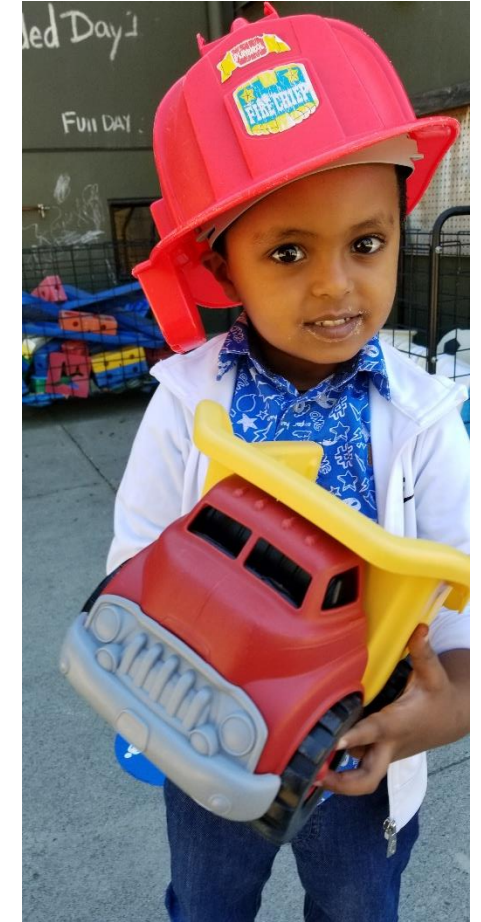




# Community Facilities Capital Projects

Available for new project(s) in 2026: \$1.7M (est.)

Photo Credit: Denise Louie Education Center



# Public Comment



Take our survey!

Let us know:

- What organizations would you like to see apply for this money?
- How could we use this money to help low-income people and families?
- What is the most important thing we could do to strengthen the Seattle community?