



## CHIPS PROVIDER PORTAL COMING SOON! CHILD INFORMATION PROVIDER SYSTEM

### PHASE 1:



Current CHIPS users (SPP providers) + CCAP Early Users, sign up for training guides to submit CCAP attendance logs online



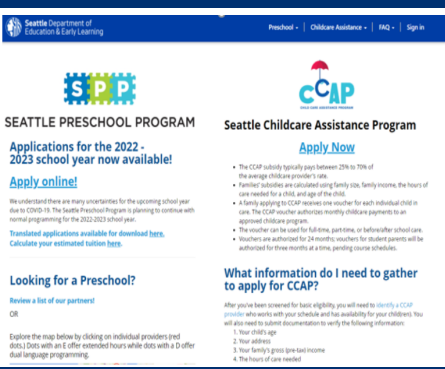
Any existing user logins will not change



To login, SPP providers will use the Preschool link and CCAP providers will use the Childcare Assistance link. If you provide both programs, you'll need to enter attendance for the same child in both program sections in the portal



Training materials will be available on the DEEL website in multiple languages both video and written guides



For the next month's attendance logs, all CCAP providers that have not yet used the portal will receive a CHIPS invitation to enroll by end of the month. We'll be reaching out to CCAP providers with current active vouchers first

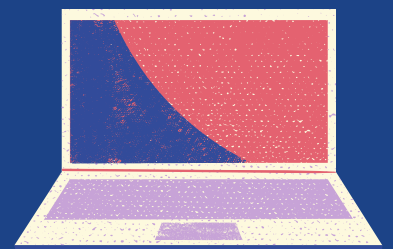


As a CCAP provider, you will be able to complete CCAP attendance from any laptop, desktop, tablet or mobile phone



One on One Technical Assistance training sessions by CCAP Education Specialists will be scheduled honoring language preferences

### PHASE 2:



### PHASE 3:



For the next month's attendance logs, all CCAP providers not yet using the portal tool will be contacted, focusing on CCAP providers that may not have any current vouchers



One on One Technical Assistance training sessions and group training sessions will continue to be available



Attendance logs via email will discontinue and all logs will be submitted via CHIPS Provider Portal for new and existing providers



CCAP Providers will use the online CHIPS Provider Portal for CCAP attendance and approving new vouchers moving forward



CCAP Providers may submit their most current rates using the CHIPS Provider Portal Tool with additional training and support as needed

### PHASE 4:



## CONTACT US

For general CHIPS support: [chips@seattle.gov](mailto:chips@seattle.gov)

For CCAP Provider support: [ccap-provider-help@seattle.gov](mailto:ccap-provider-help@seattle.gov)

For DEEL support via phone: 206-386-1050