



Seattle City Light

TRANSPORTATION ELECTRIFICATION STRATEGIC INVESTMENT PLAN

Presentation for Seattle City Light Review Panel

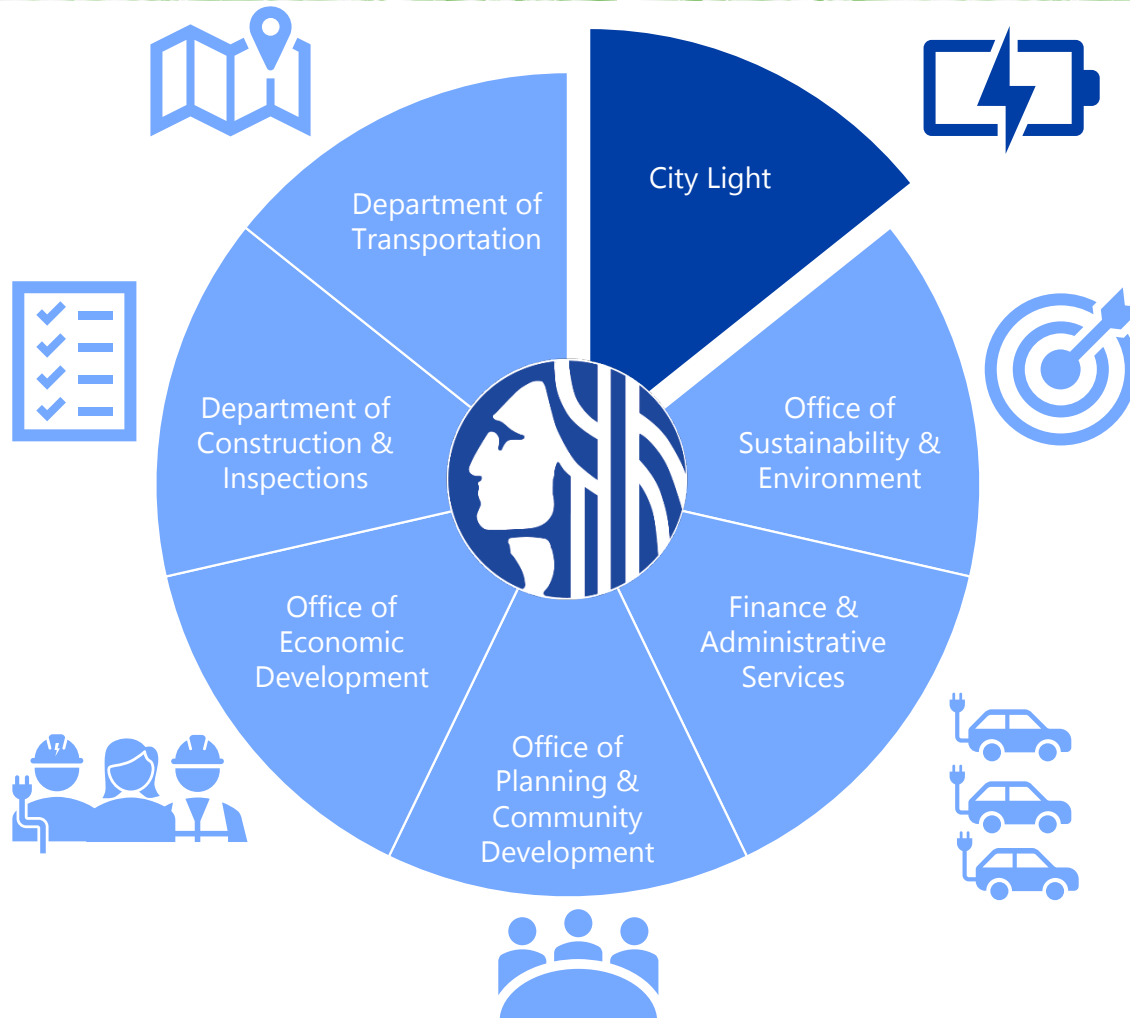
Seattle City Light

WHAT IS TRANSPORTATION ELECTRIFICATION?

- Moving people, goods, and services around the greater Seattle area using Seattle City Light's clean electricity
- Electrifying Seattle's entire transportation system
 - buses
 - personal vehicles
 - rideshare
 - ferries
 - heavy-duty vehicles
 - goods delivery
 - local government and commercial fleets



CITYWIDE COORDINATION ON TRANSPORTATION ELECTRIFICATION



BENEFITS



No dirty soot comes out of tailpipes of electric buses or cars.

Vehicles powered by our clean electricity have **zero carbon emissions** and **do not contribute to our climate pollution.**



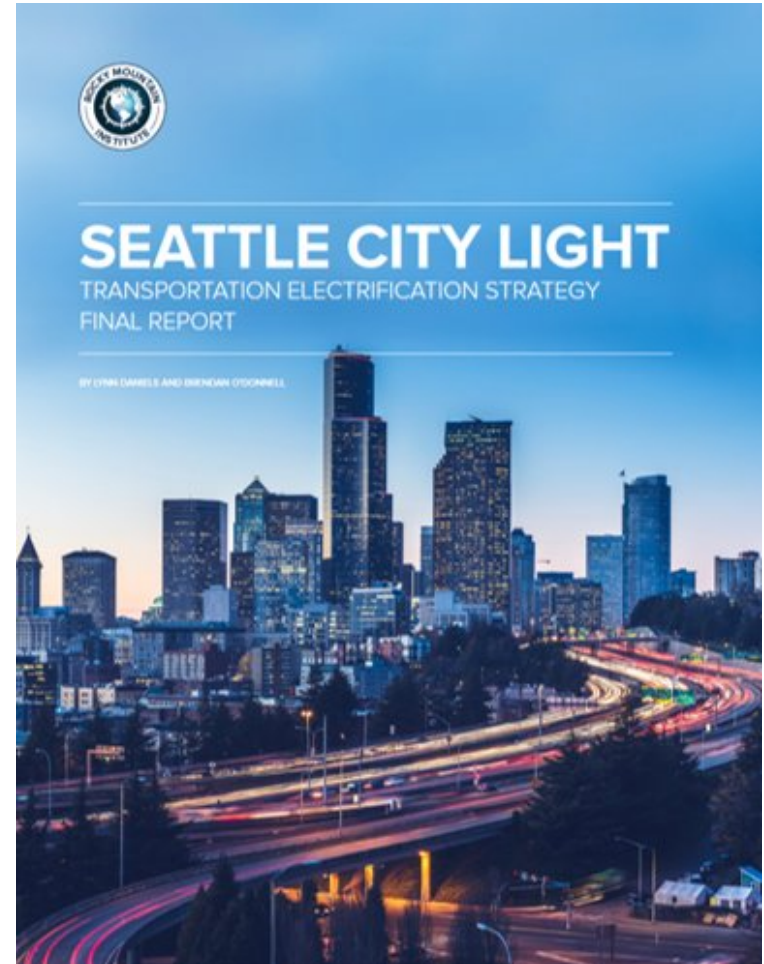
Average of **50% savings** in annual operating costs for electric vehicles over gas-powered vehicles.

Mass adoption of electric vehicles can help **keep electricity prices low for all.**

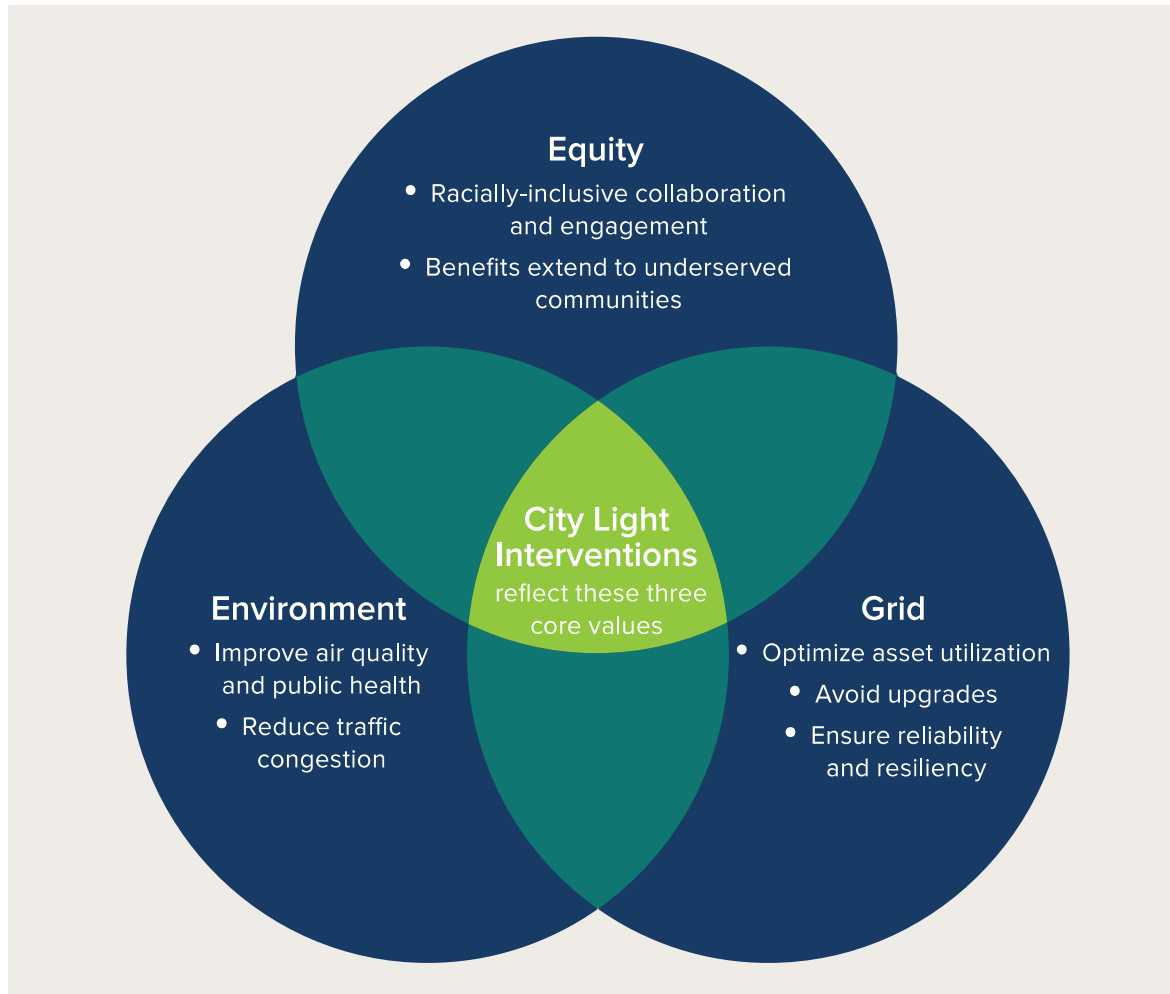


CITY LIGHT'S ROLE

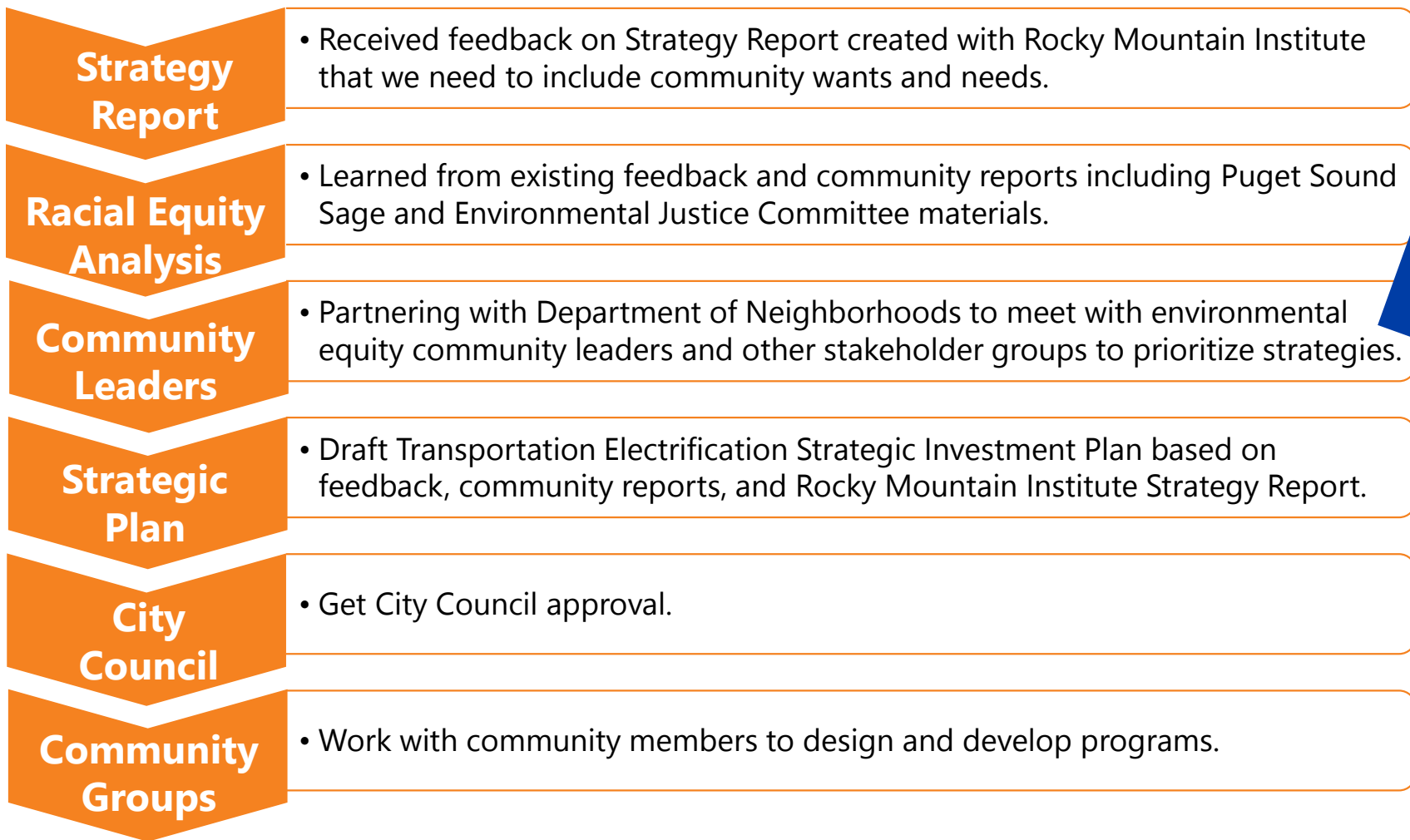
- Developing programs to enable and promote bus, car and truck electrification
- Reliable and affordable charging
- Act on HB 1512's clear authority



TRANSPORTATION ELECTRIFICATION VALUES FRAMEWORK



EMBEDDING STAKEHOLDER ENGAGEMENT



We are here!

WHAT WE'VE HEARD SO FAR

What We've Heard from Community	Potential Solutions from Community
Communities of color suffer from poor air quality and health disparities	Prioritize these areas for investments
Need increased/improved public transit	Provide charging infrastructure for buses
Most people are unfamiliar with EVs	Support community-based education
Many community members cannot afford cars	Provide charging infrastructure for community carsharing
Provide economic opportunities for communities of color	Support economic opportunities related to transportation electrification
Lack of access to charging for multifamily units	Provide at-home and near-home affordable charging solutions
Without proper planning, public charging may contribute to increased housing costs, exacerbate community displacement, and increase the risk of gentrification	Utilize community-based decision making for public charging infrastructure to design and locate stations with community input

GOALS



Community Assets

City Light's programs invest in infrastructure that are community assets so Equity & Environment Communities can enjoy the benefits of transportation electrification in their current neighborhoods.



Community Collaboration

Equity & Environment Communities see their wants and needs reflected in City Light transportation electrification programs.



Healthy Planet, Healthy Lives

Reduce tailpipe emissions that impact local air quality and public health where Equity & Environment Communities live, learn, work and play. Reduce CO₂ emissions that have a disproportionate burden on the most vulnerable populations and communities.



Equitable Access

Equity & Environment Communities learn about our transportation electrification programs, can readily understand and access materials and resources, see themselves reflected in communications, and participate in and benefit from City Light programs.



Economic Opportunities and Youth Pathways

City Light enables Equity & Environment Communities to participate in and benefit from the local transportation electrification economy.

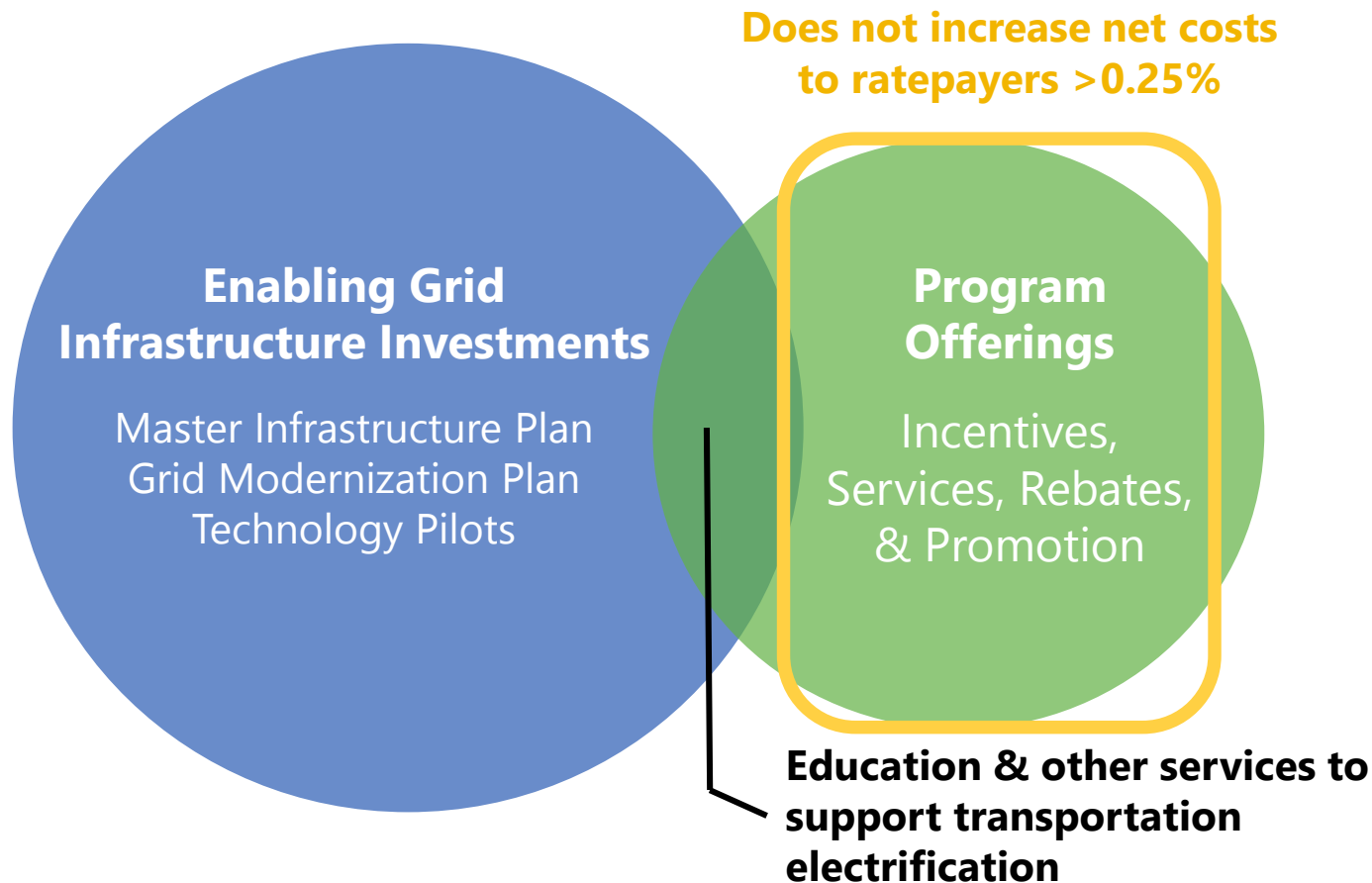






Electricity Affordability

Widespread transportation electrification increases revenue to put downward pressure on electricity prices.



STRATEGIC INVESTMENTS



TRANSPORTATION USES	ACTIVITIES	POTENTIAL CITY LIGHT OFFERINGS
 All	Customer and stakeholder outreach and awareness	<ul style="list-style-type: none"> • Information, education, events and resources on the benefits of electric vehicles
 Public Transit (Buses, School Buses, Ferries, Trains, Light Rail)	Electrify buses	<ul style="list-style-type: none"> • Financial incentives and technical assistance for electric charging infrastructure for King County Metro and other public buses
	Electrify ferries and other public transit	<ul style="list-style-type: none"> • Financial incentives and technical assistance for electric charging infrastructure for ferries and other public transit
 Personal Mobility (Cars, Bikes, Scooters, etc.)	Increase access to electrified transportation	<ul style="list-style-type: none"> • Provide charging infrastructure for community car share • Reduced fees for electric vehicle charging
	Expand at-home and near-home charging	<ul style="list-style-type: none"> • Charging solutions near home for those with no access to off-street parking • Provide incentives, qualified installers and special payment terms to help reduce barriers to installing charging stations in multifamily housing
	Electrify high-mileage vehicles	<ul style="list-style-type: none"> • Lower costs to charge at different times of day to meet the needs of taxis and transportation network company drivers (Lyft, Uber, Instacart) while benefiting the grid
	Expand public fast charging	<ul style="list-style-type: none"> • Financial incentives for public charging stations • Community collaboration to install additional public charging stations in areas with low EV adoption or inadequate public charging infrastructure
	Expand workplace charging	<ul style="list-style-type: none"> • Provide EV-ready electricity service to workplaces for future charging infrastructure
 Commercial & Government Fleets	Electrify commercial and local government fleets	<ul style="list-style-type: none"> • Financial incentives for electric charging infrastructure for companies that transport people, goods and services through communities with higher exposure to air pollution

QUESTIONS FOR YOU

- What is #1 for you? What should we make sure to include in the plan?
- Based on the options listed, how should we prioritize them? What is missing?
- How does this work fit in with other priorities for your organizations and communities?



Andrea DeWees

Policy Analyst

Electrification & Strategic Technology

206.684.3870

Andrea.DeWees@seattle.gov

Madeline Kostic

Sr. Energy Management Analyst

Customer Energy Solutions

206.684.4215

Madeline.Kostic@seattle.gov

Jenny Levesque

Community Outreach Manager

Communications Division

206.684.3026

Jenny.Levesque@seattle.gov

THANK YOU!



Seattle City Light