



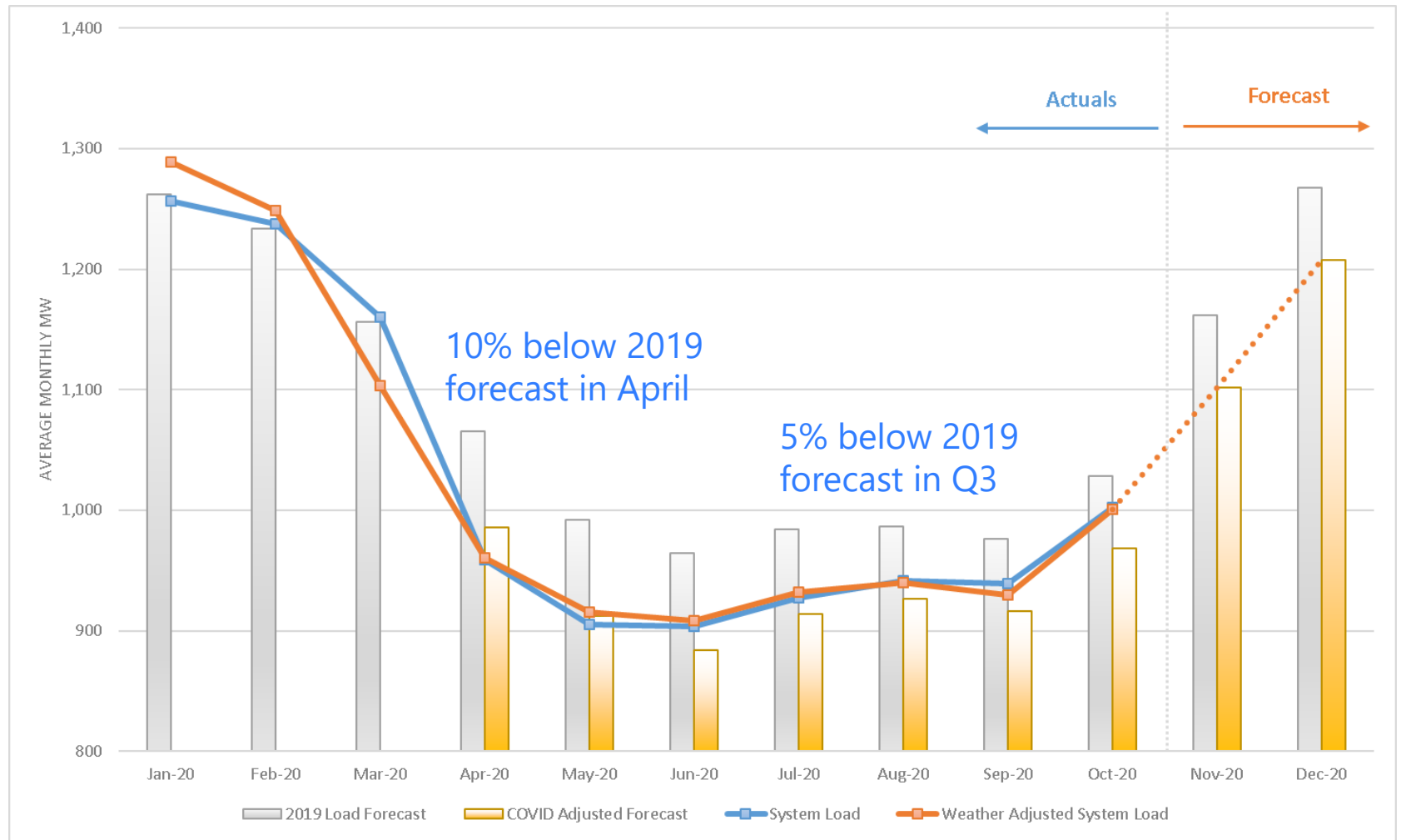
Seattle City Light

2020 RETAIL SALES FORECAST UPDATE

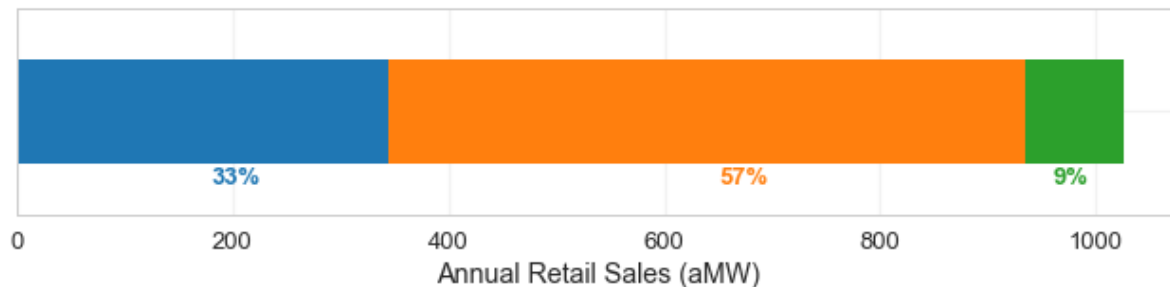
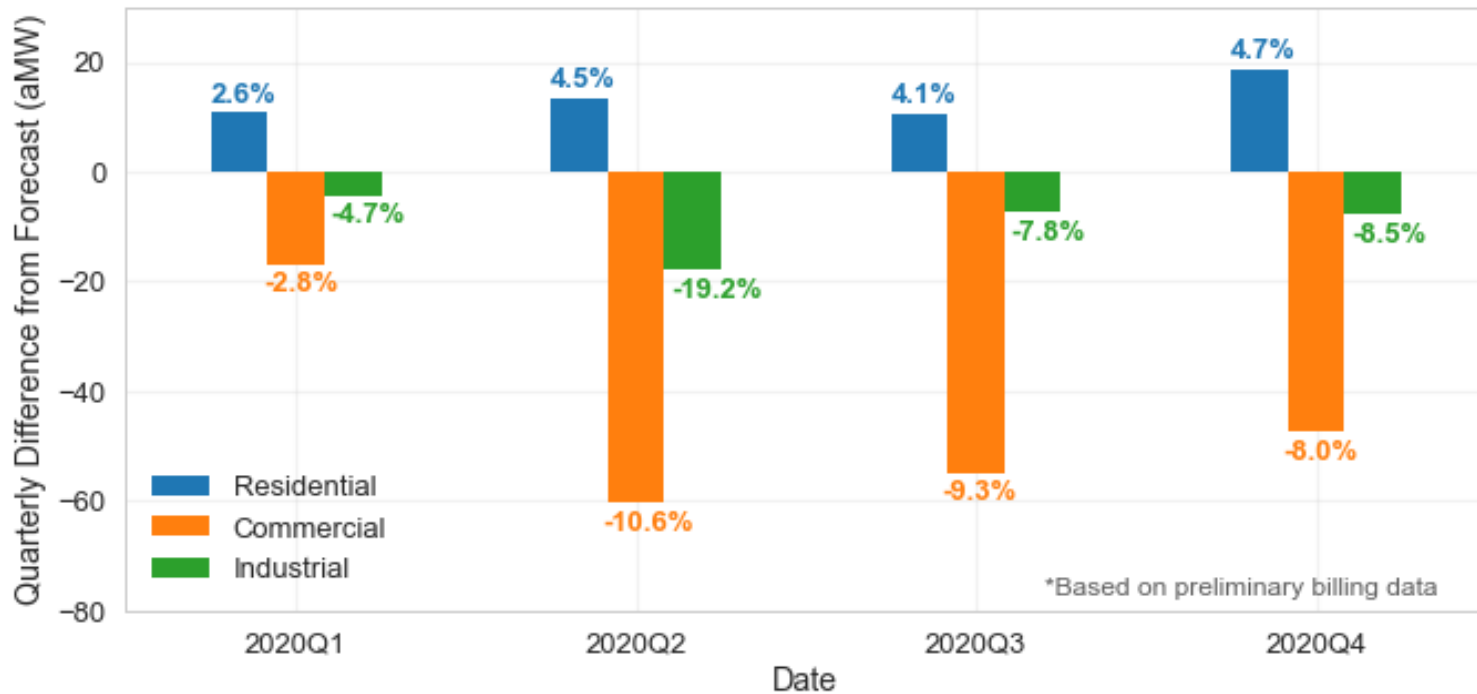
Review Panel Presentation

John Rudolph
December 2020

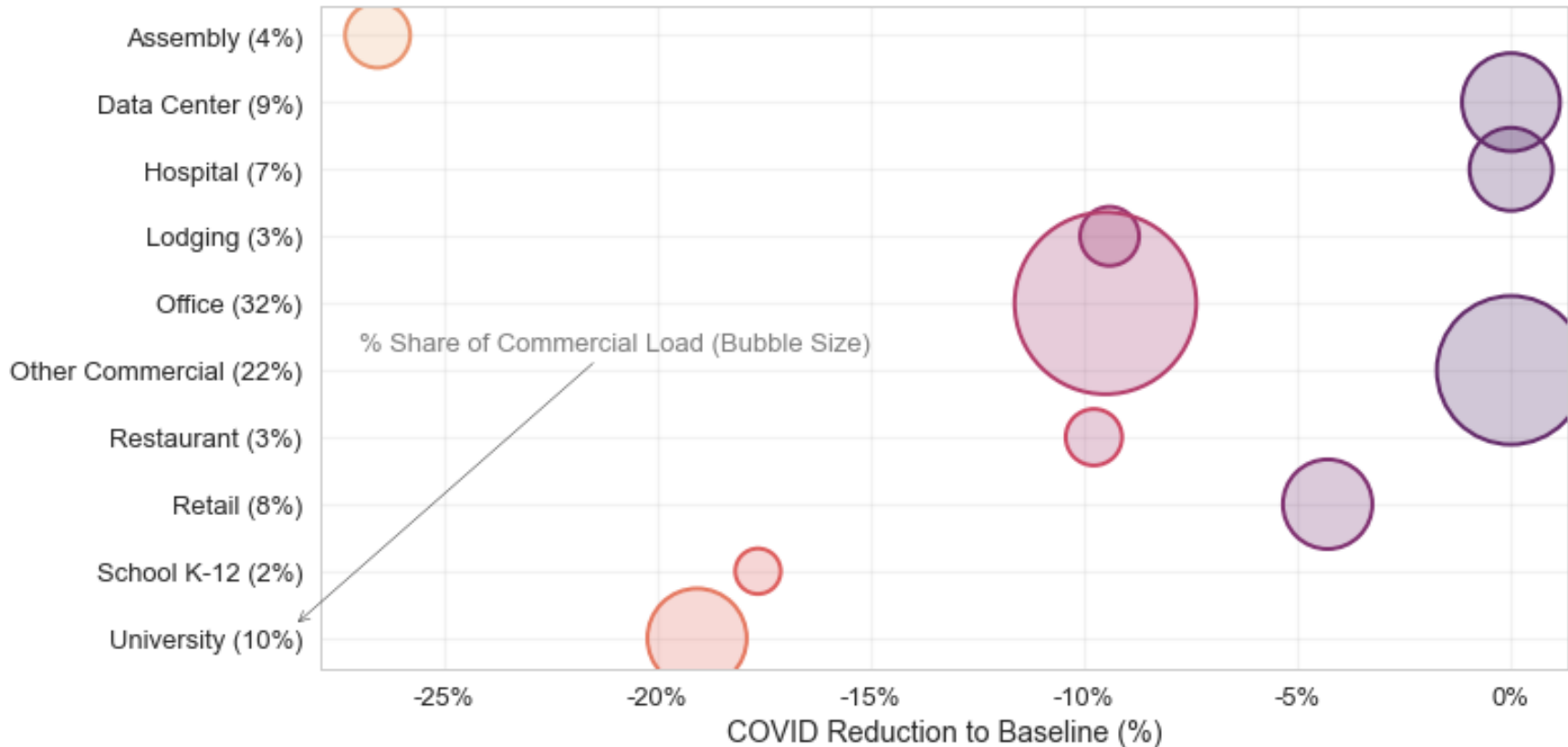
COVID IMPACTS 2020 SYSTEM LOAD



COVID IMPACTS 2020 RETAIL SALES



COVID IMPACTS BY BUILDING SEGMENT



COVID & ECONOMIC RECOVERY



COVID Recovery

Vaccine is widely distributed mid-2021 and normal economic activity starts to return by end of the year. Electricity consumption in heavily impacted Commercial sectors will gradually recover between 2022 - 2024.



Housing Market

Remains healthy and continues to grow as economy recovers



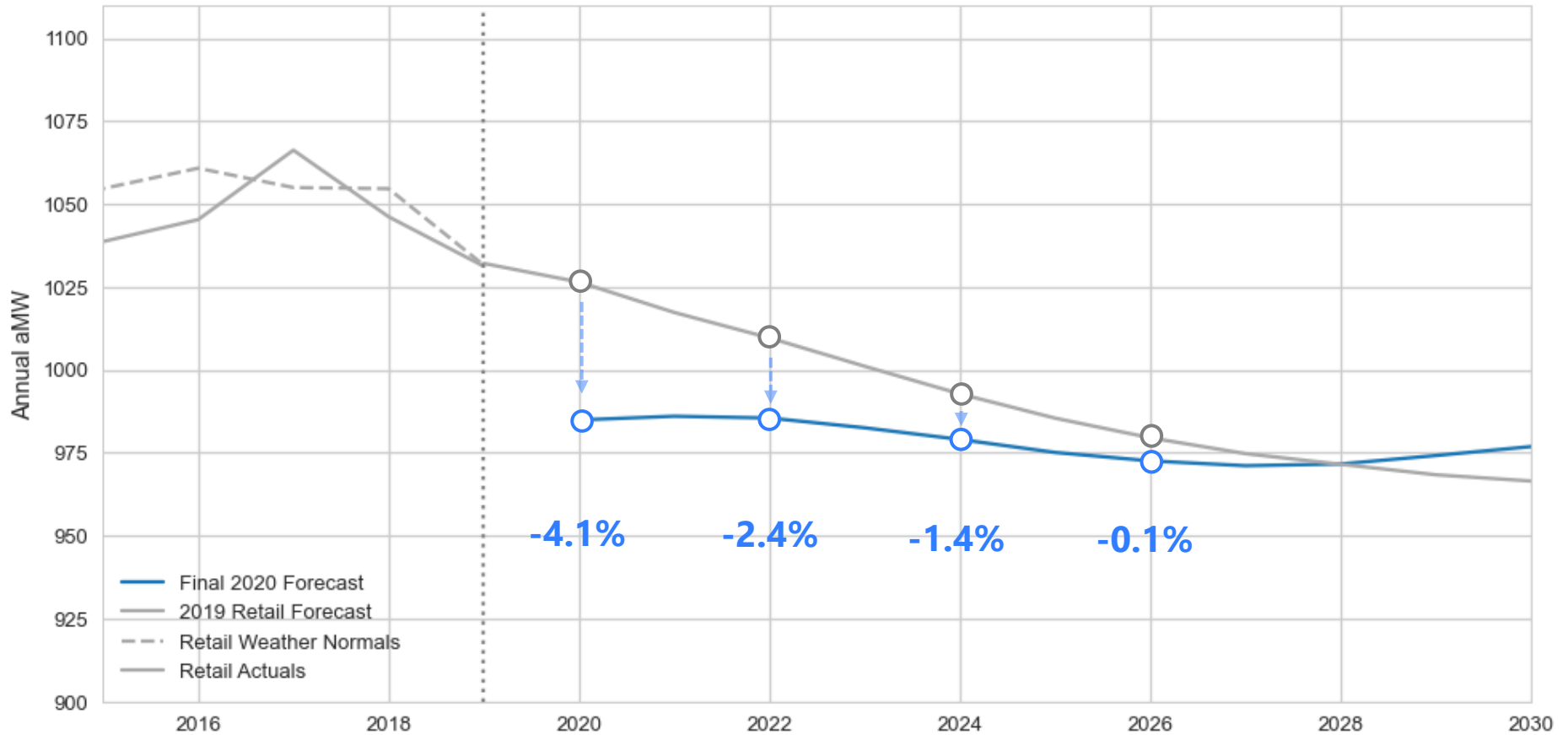
Commercial Real-Estate

Will undergo some rebalancing leading to a slow down in new construction over next 5 years

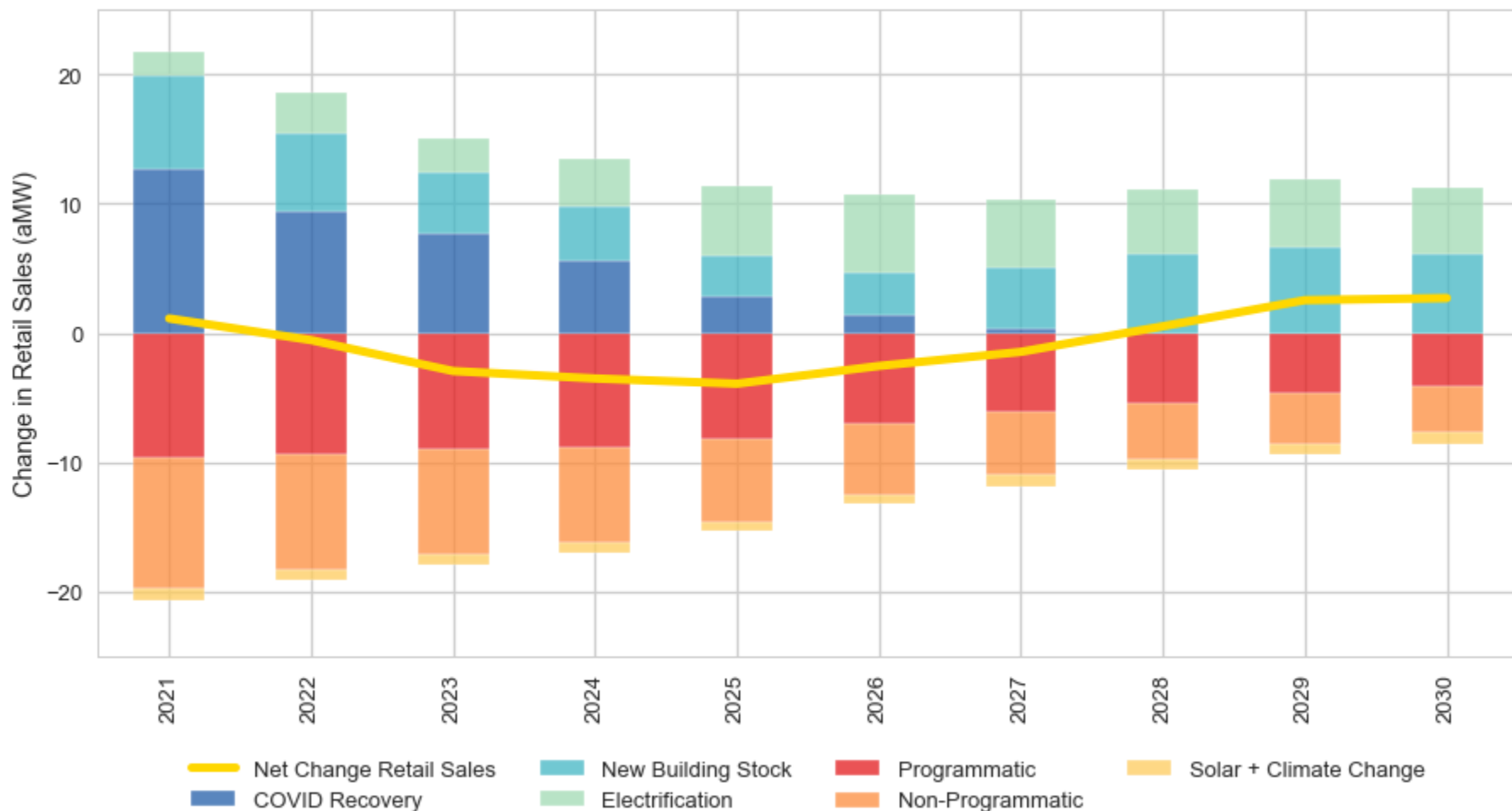
Normal Economic Drivers



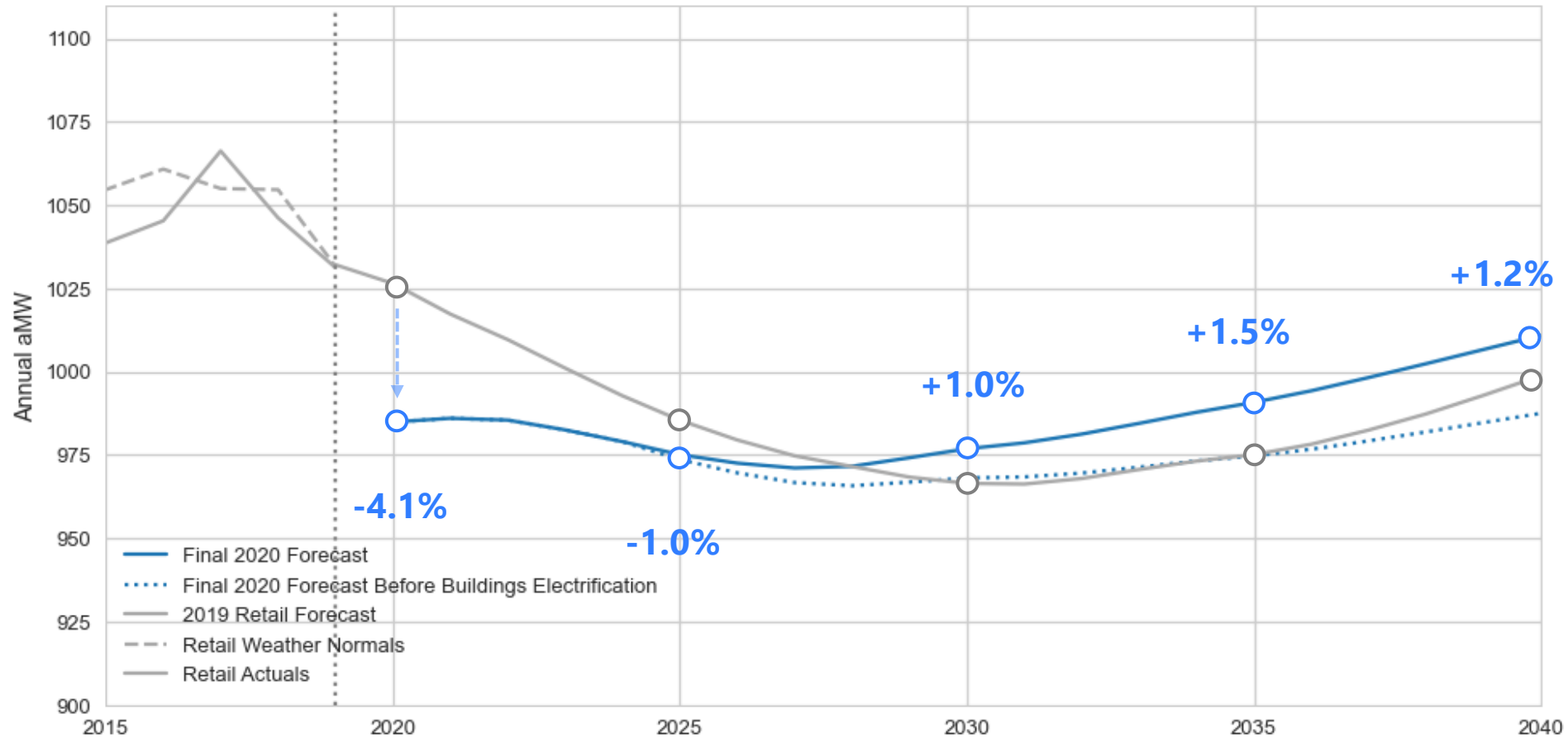
RETAIL SALES FORECAST 2020 - 2030



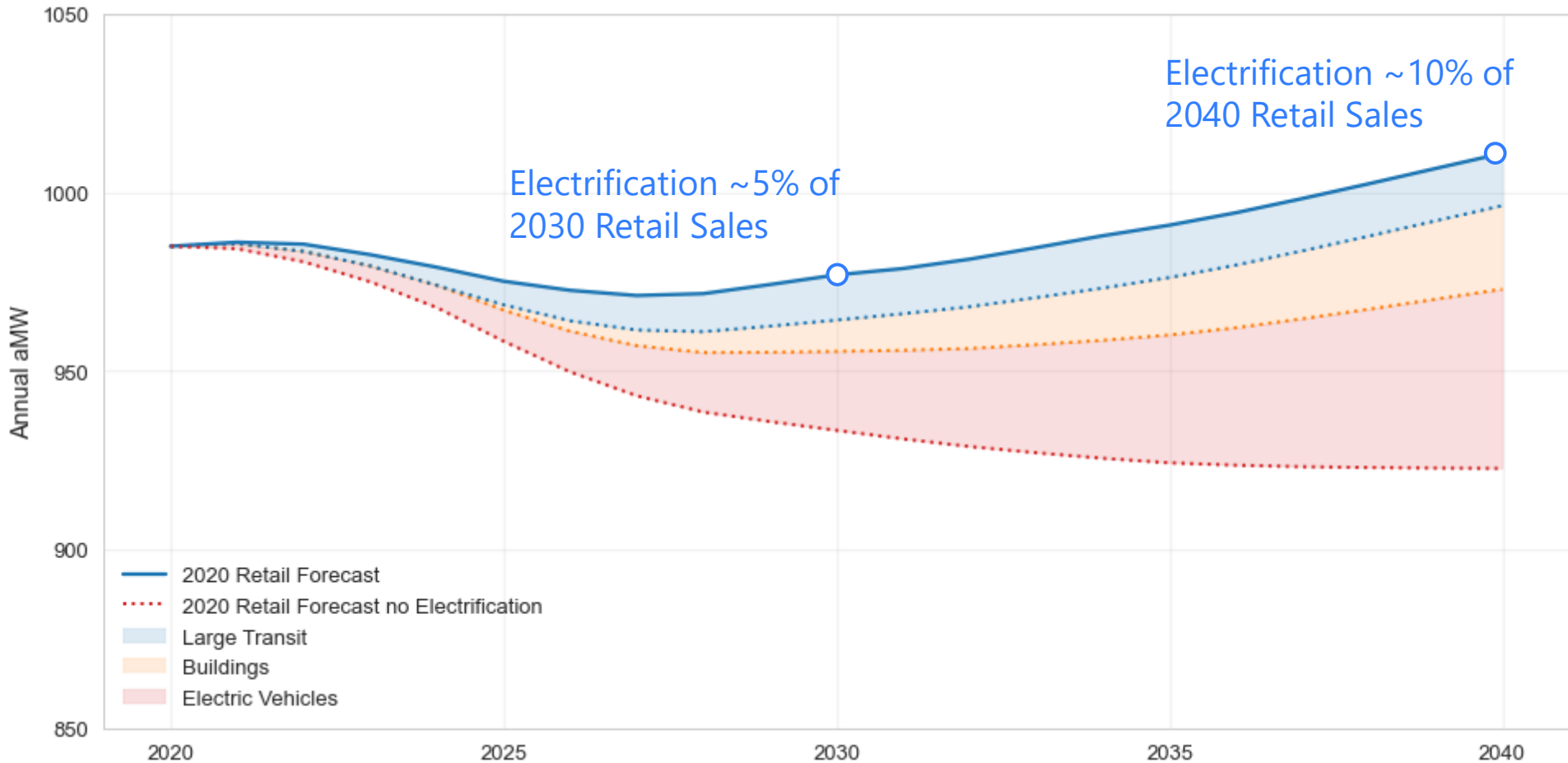
RETAIL SALES FORECAST DRIVERS: 2020 - 2030



RETAIL SALES FORECAST: 2020 - 2040



IMPACTS OF ELECTRIFICATION ON 2020 FORECAST



CITY LIGHT

MISSION

Seattle City Light provides our customers affordable, reliable and environmentally responsible energy services.

VISION

Create a shared energy future by partnering with our customers to meet their energy needs in whatever way they choose.

VALUES:

-  Customers First
-  Environmental Stewardship
-  Equitable Community Connections
-  Operational and Financial Excellence
-  Safe and Engaged Employees